



FOR MATERIALS
SEE SHEET A-450

NOTE: FOR LOCATIONS OF
COMPONENTS SEE SHEET A-400

INITIAL SUBMISSION

PROJECT N° 20110015 / 03862-001

ISSUE DATE: 06.13.2014

ENLARGED BUILDING SKIN COMPONENT - L STREET 1

COLUMBIA PLACE - BLOCK 369
Square 369, Washington, DC

PUD 369 SUBMISSION

© 2014 Cooper Carry, Inc., 191 Peachtree Street NE, Suite 2400, Atlanta, Georgia 30303 Tel. 404-237-2000 Fax 404-237-0276



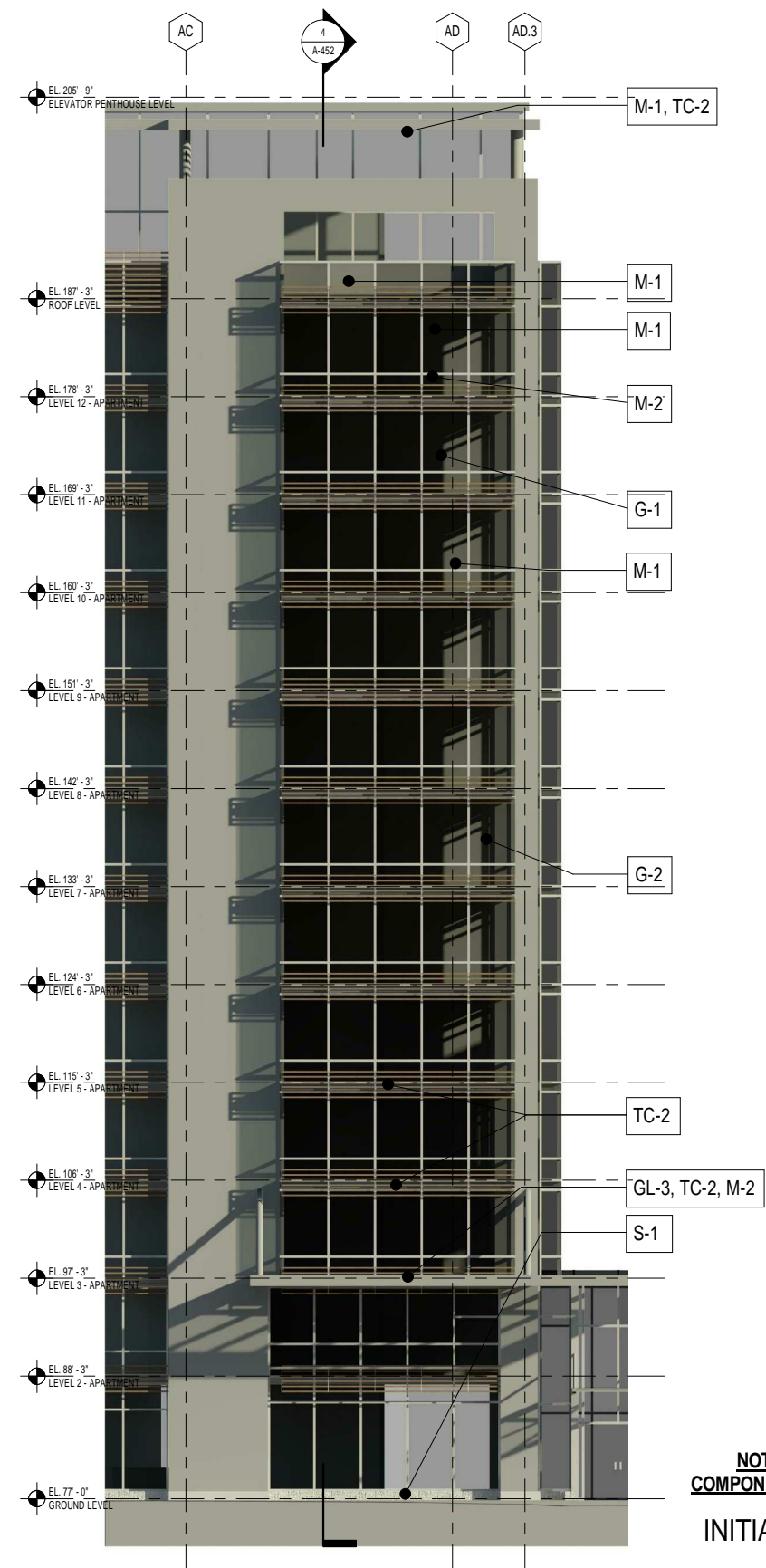
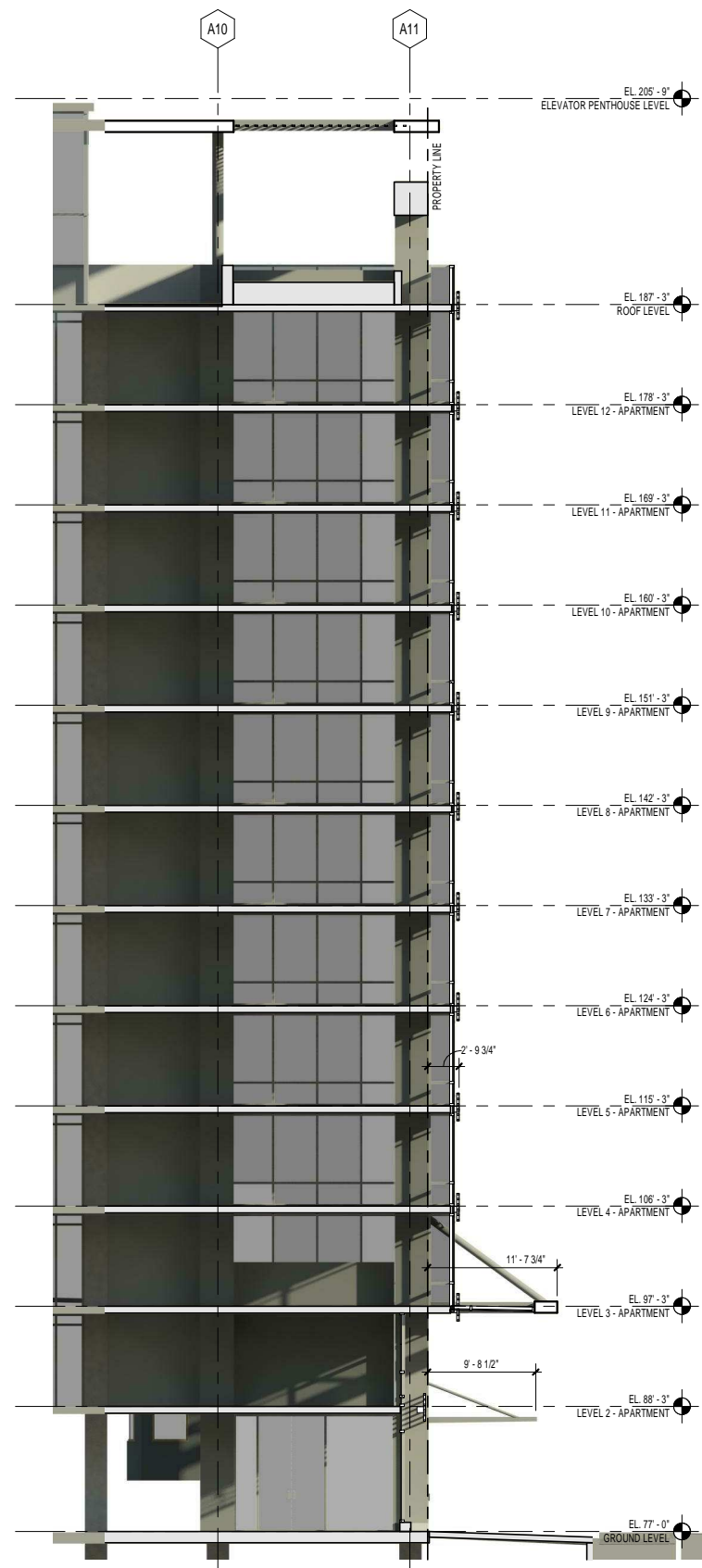
COOPER CARRY

tvsvdesign

PUD 369

ZONING COMMISSION
District of Columbia
CASE NO. 14-09
EXHIBIT NO. 4A4

A-451



FOR MATERIALS
SEE SHEET A-450

NOTE: FOR LOCATIONS OF
COMPONENTS SEE SHEET A-400

INITIAL SUBMISSION

PROJECT N° 20110015 / 03862-001

ISSUE DATE: 06.13.2014

ENLARGED BUILDING SKIN COMPONENT - L STREET 2

COLUMBIA PLACE - BLOCK 369
Square 369, Washington, DC

PUD 369 SUBMISSION

© 2014 Cooper Carry, Inc., 191 Peachtree Street NE, Suite 2400, Atlanta, Georgia 30303 Tel. 404-237-2000 Fax 404-237-0276

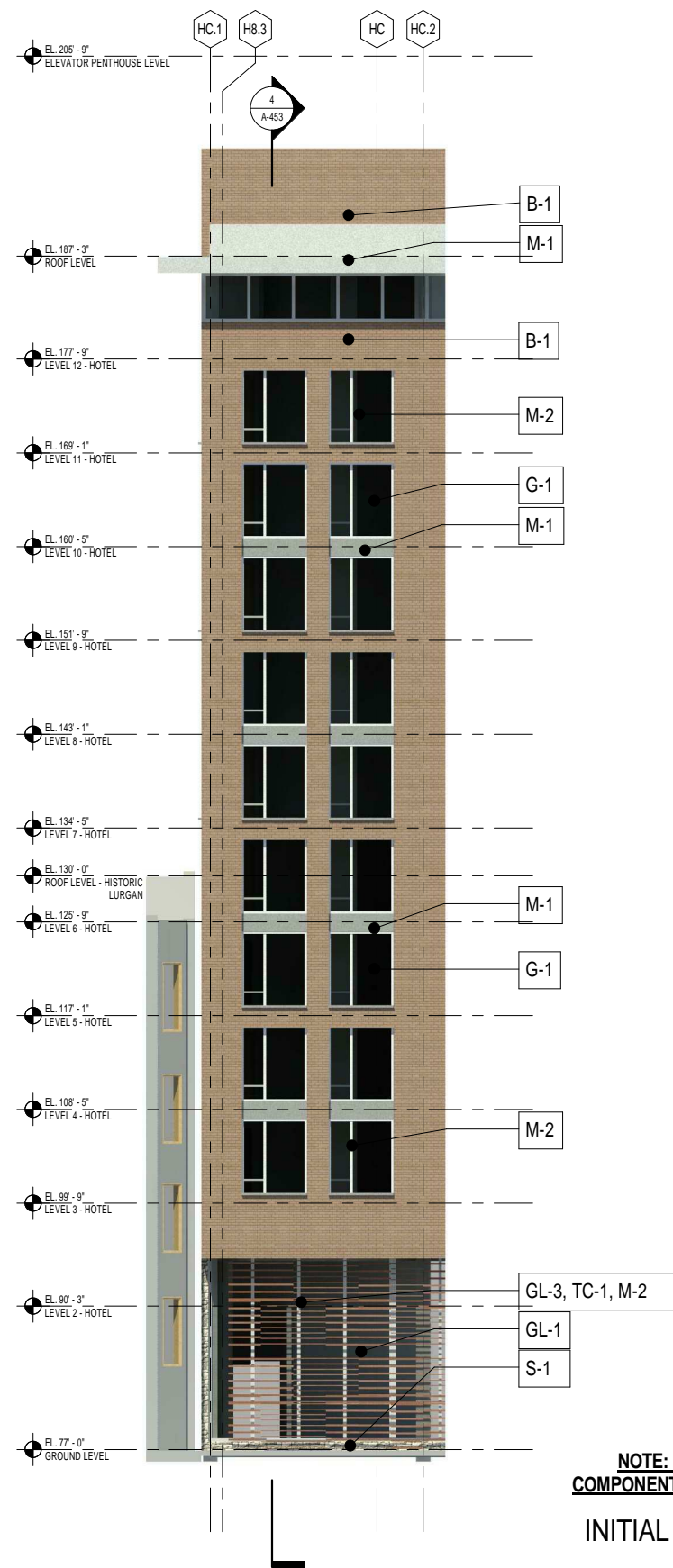
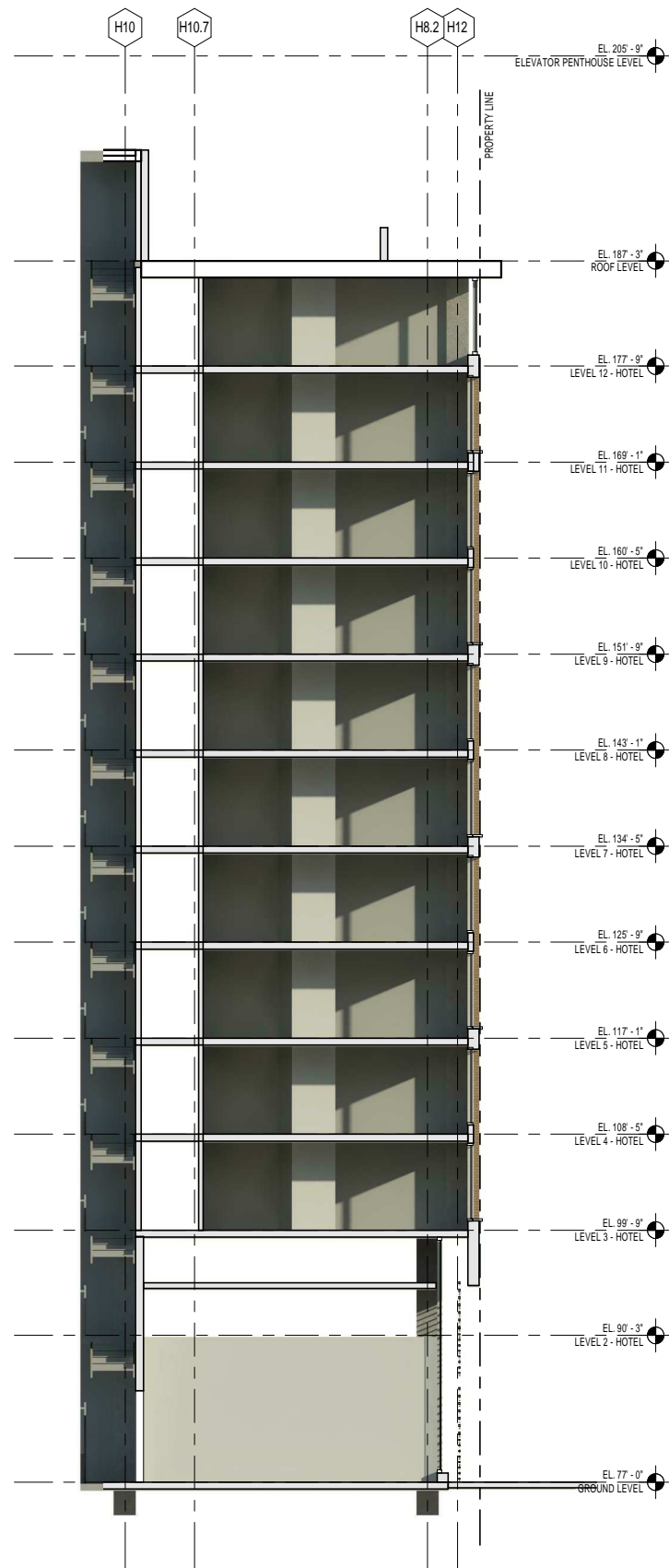


COOPER CARRY

tvsvdesign

PUD 369

A-452



FOR MATERIALS
SEE SHEET A-450

NOTE: FOR LOCATIONS OF
COMPONENTS SEE SHEET A-400

INITIAL SUBMISSION

PROJECT N° 20110015 / 03862-001

ISSUE DATE: 06.13.2014

ENLARGED BUILDING SKIN COMPONENT - L STREET 3

COLUMBIA PLACE - BLOCK 369
Square 369, Washington, DC

PUD 369 SUBMISSION

© 2014 Cooper Carry, Inc., 191 Peachtree Street NE, Suite 2400, Atlanta, Georgia 30303 Tel. 404-237-2000 Fax 404-237-0276



COOPER CARRY

tvsvdesign

PUD 369

A-453



FOR MATERIALS
SEE SHEET A-450

NOTE: FOR LOCATIONS OF
COMPONENTS SEE SHEET A-400

INITIAL SUBMISSION

PROJECT N° 20110015 / 03862-001

ISSUE DATE: 06.13.2014

ENLARGED BUILDING SKIN COMPONENT - L STREET 4

COLUMBIA PLACE - BLOCK 369
Square 369, Washington, DC

PUD 369 SUBMISSION

© 2014 Cooper Carry, Inc., 191 Peachtree Street NE, Suite 2400, Atlanta, Georgia 30303 Tel. 404-237-2000 Fax 404-237-0276

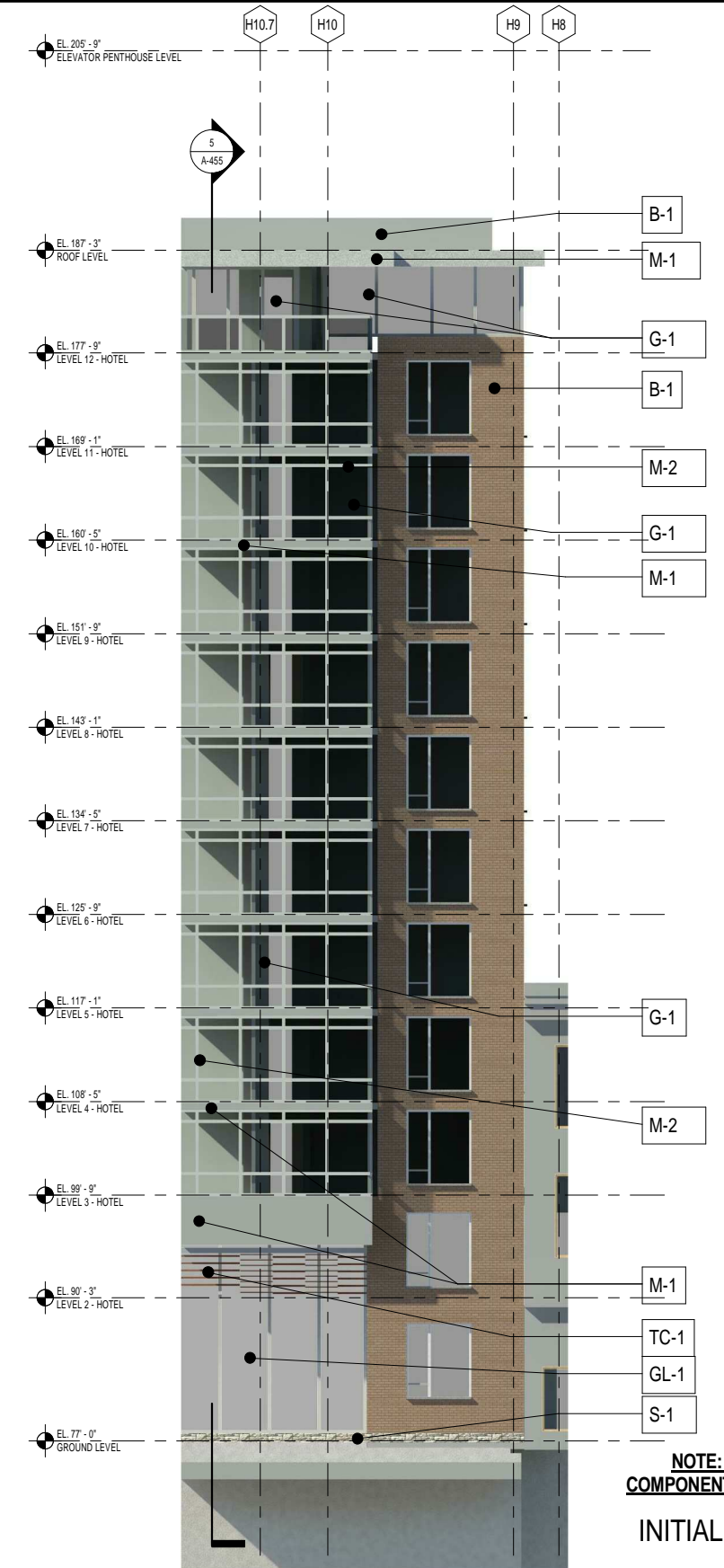


COOPER CARRY

tvsvdesign

PUD 369

A-454



FOR MATERIALS
SEE SHEET A-450

NOTE: FOR LOCATIONS OF
COMPONENTS SEE SHEET A-400

INITIAL SUBMISSION

PROJECT N° 20110015 / 03862-001

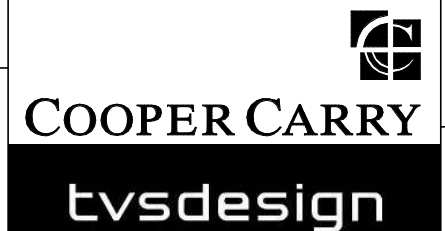
ISSUE DATE: 06.13.2014

PUD 369 SUBMISSION

ENLARGED BUILDING SKIN COMPONENT - 9TH STREET 1

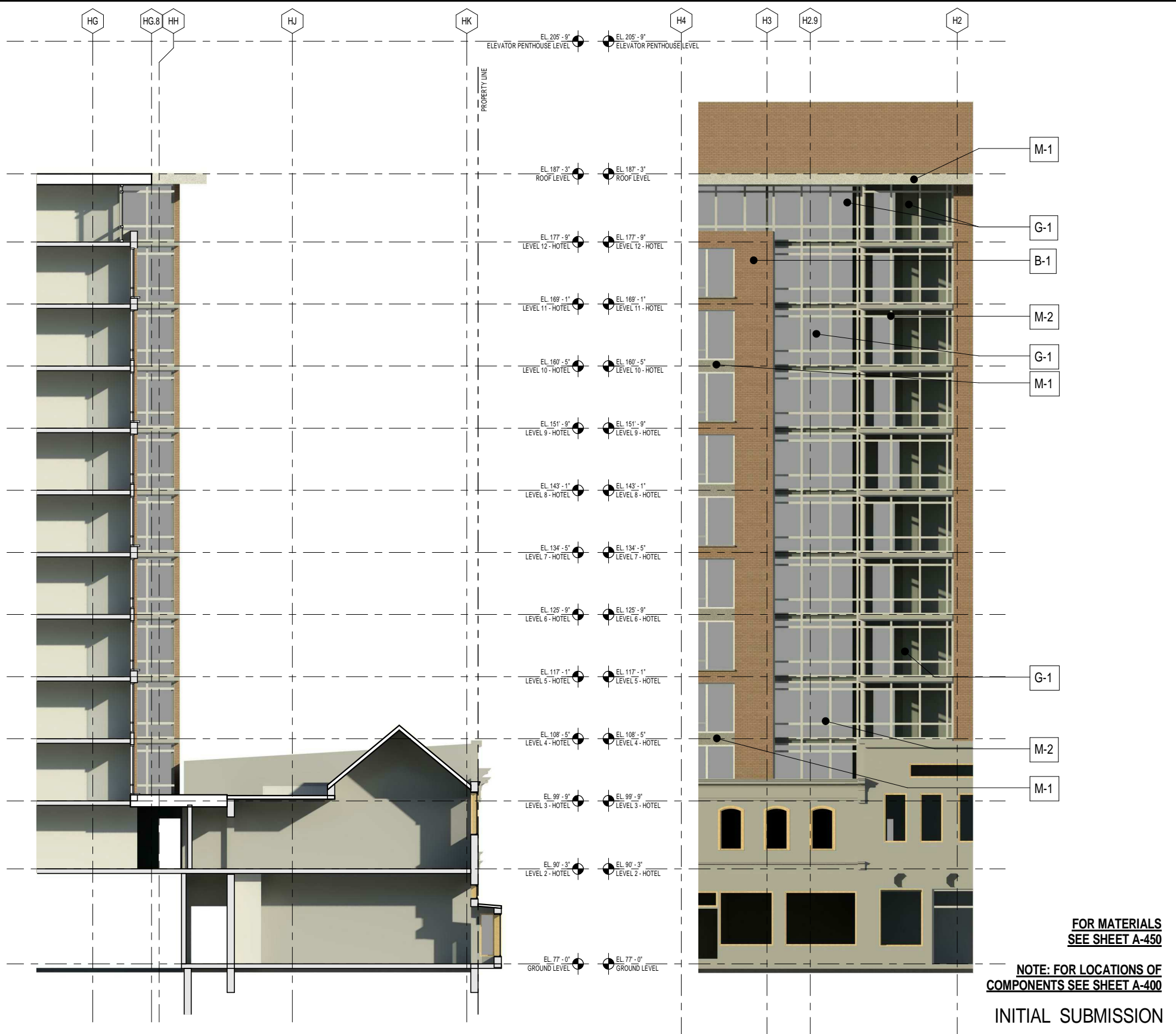
COLUMBIA PLACE - BLOCK 369
Square 369, Washington, DC

© 2014 Cooper Carry, Inc., 191 Peachtree Street NE, Suite 2400, Atlanta, Georgia 30303 Tel. 404-237-2000 Fax 404-237-0276



PUD 369

A-455



PROJECT N° 20110015 / 03862-001

ISSUE DATE: 06.13.2014

ENLARGED BUILDING SKIN COMPONENT - 9TH STREET 2

PUD 369 SUBMISSION

COLUMBIA PLACE - BLOCK 369
Square 369, Washington, DC

© 2014 Cooper Carry, Inc., 191 Peachtree Street NE, Suite 2400, Atlanta, Georgia 30303 Tel. 404-237-2000 Fax 404-237-0276

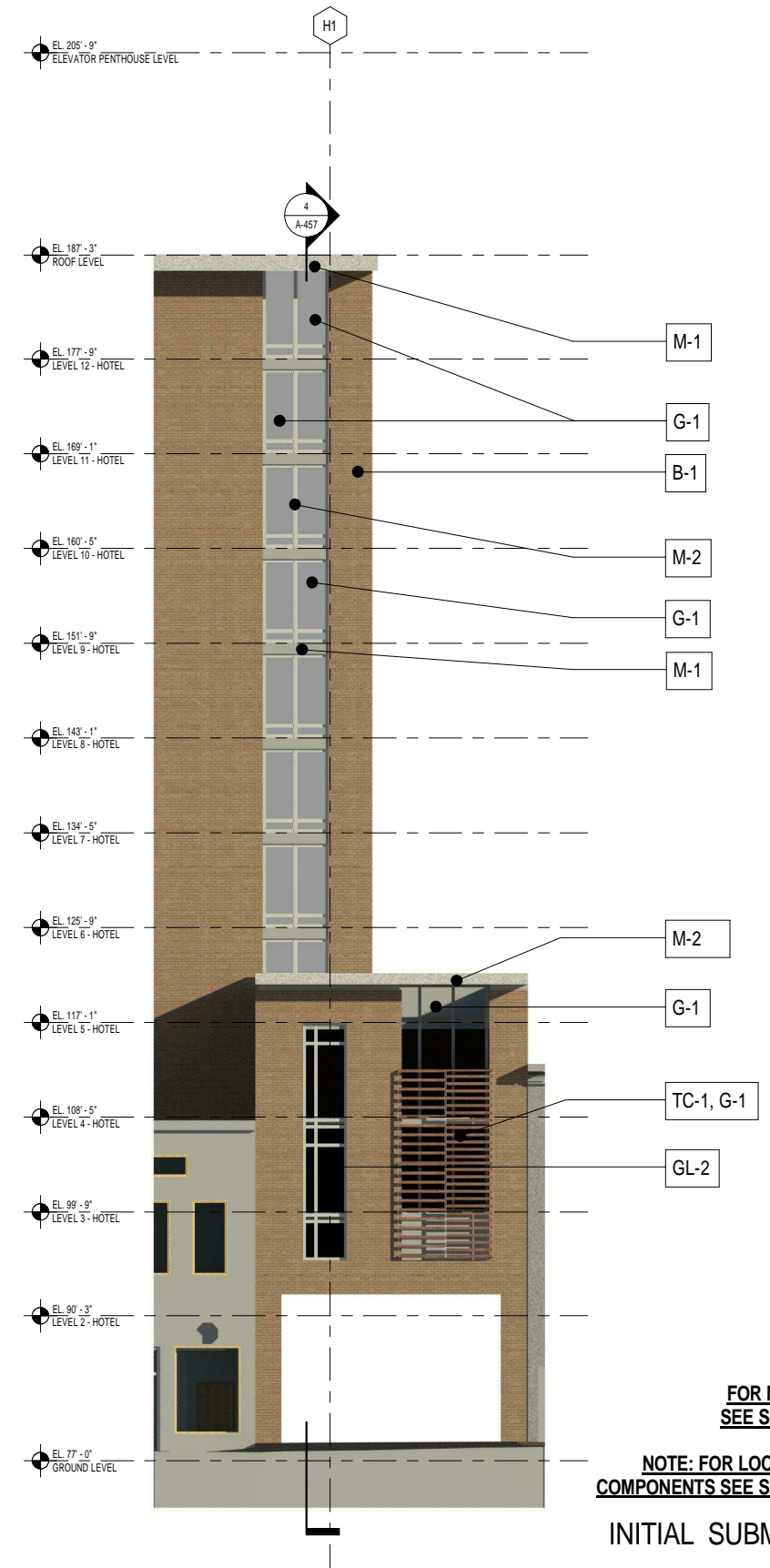
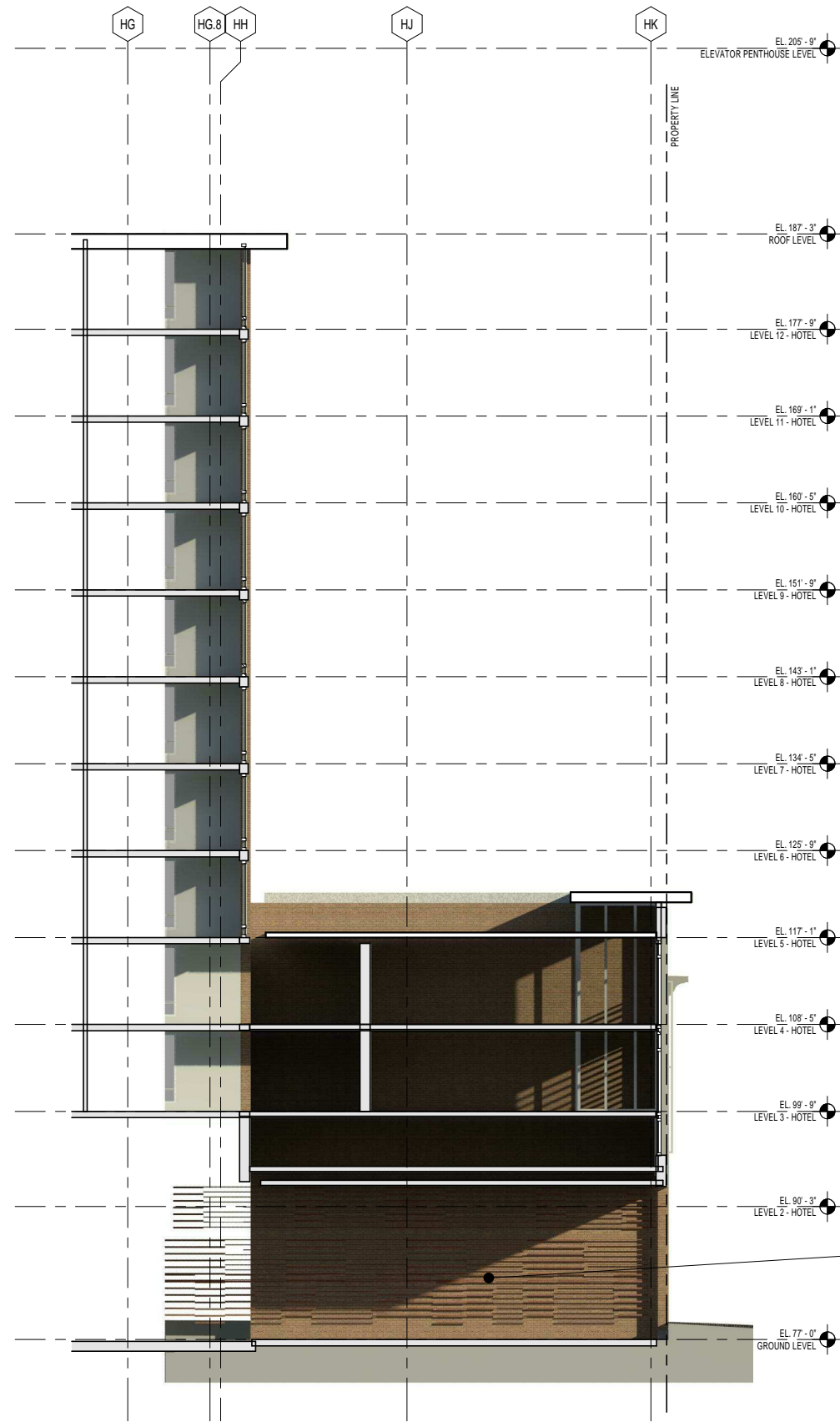
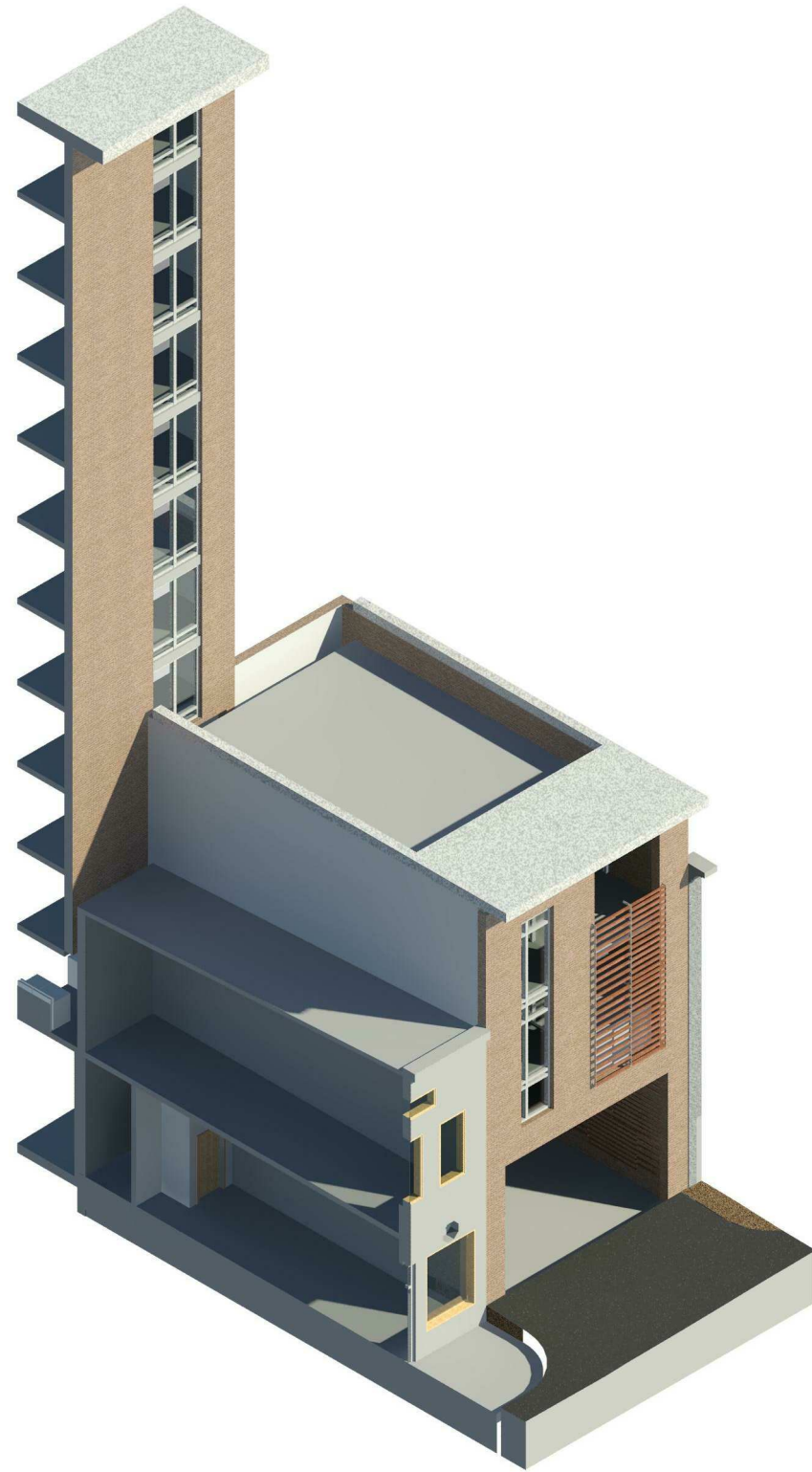


COOPER CARRY

tvstdesign

PUD 369

A-456



FOR MATERIALS
SEE SHEET A-450

NOTE: FOR LOCATIONS OF
COMPONENTS SEE SHEET A-400

INITIAL SUBMISSION

PROJECT N° 20110015 / 03862-001

ISSUE DATE: 06.13.2014

PUD 369 SUBMISSION

ENLARGED BUILDING SKIN COMPONENT - 9TH STREET 3

COLUMBIA PLACE - BLOCK 369
Square 369, Washington, DC

© 2014 Cooper Carry, Inc., 191 Peachtree Street NE, Suite 2400, Atlanta, Georgia 30303 Tel. 404-237-2000 Fax 404-237-0276

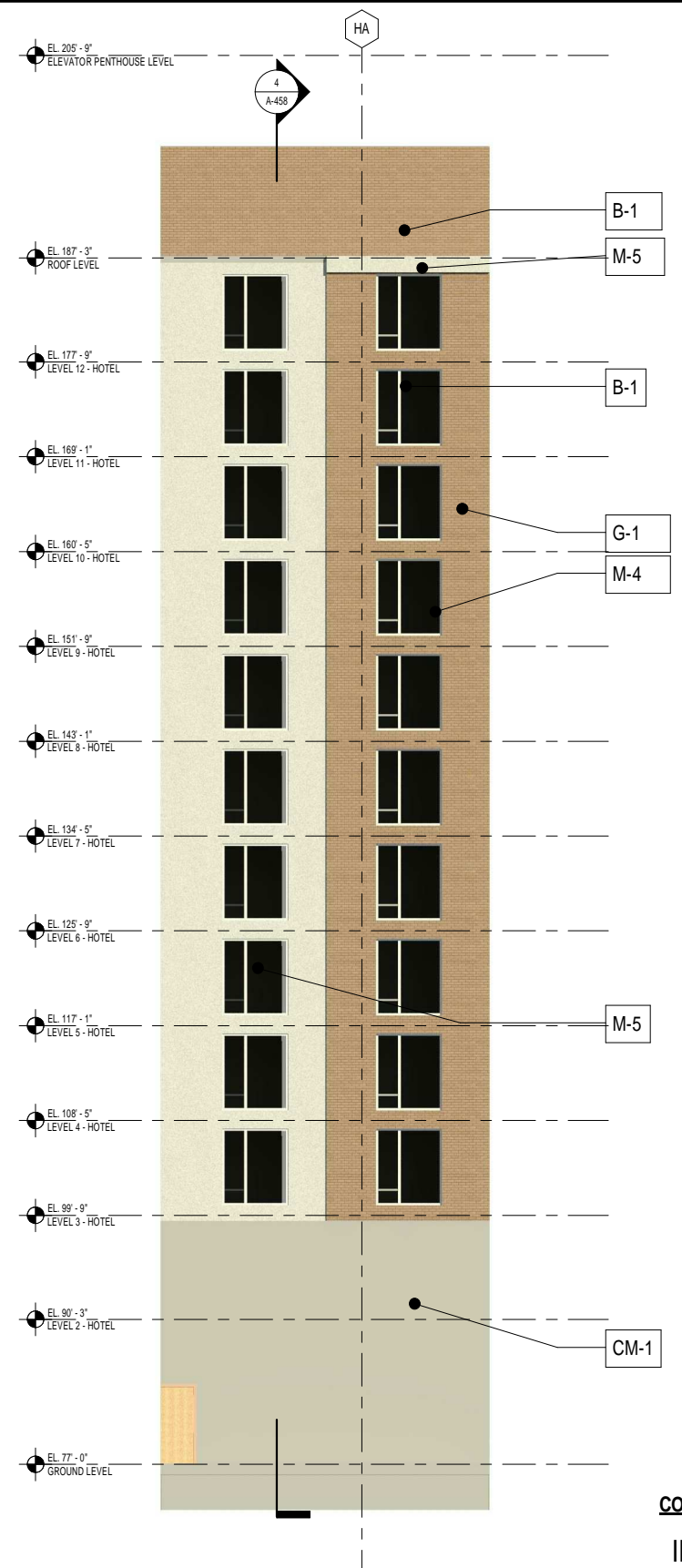
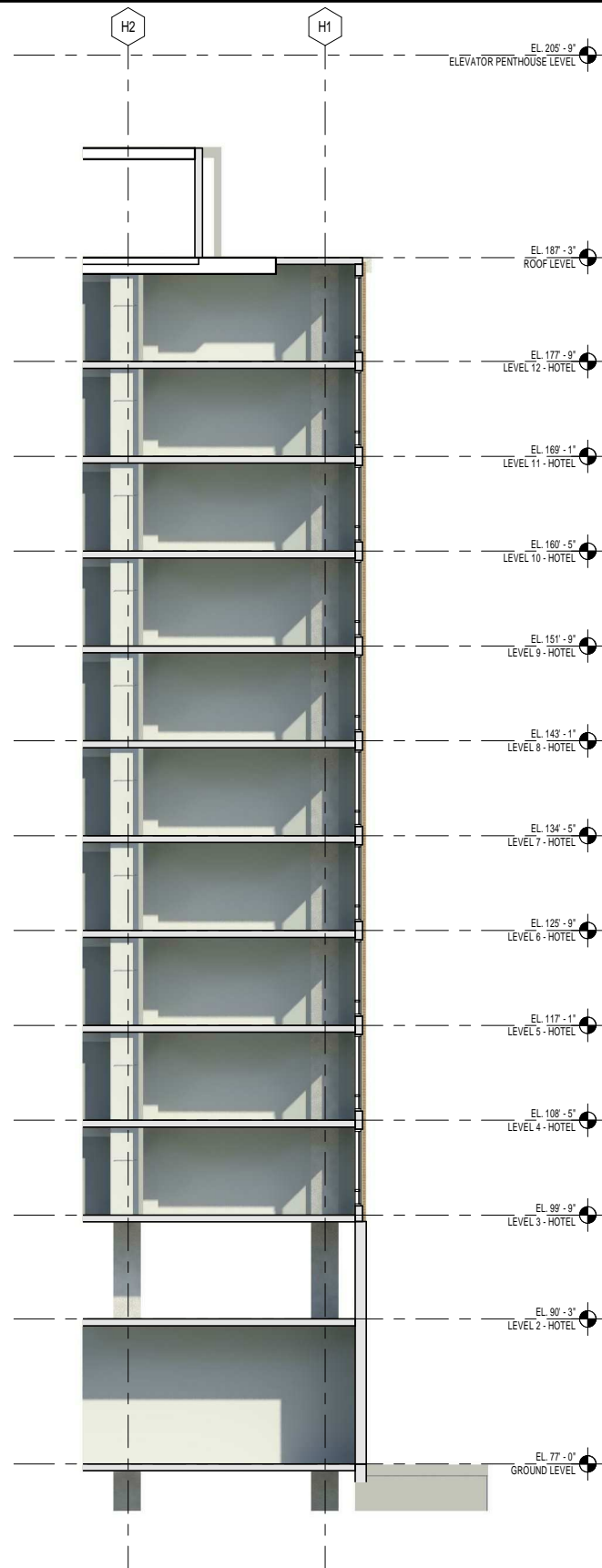


COOPER CARRY

tvsvdesign

PUD 369

A-457



FOR MATERIALS
SEE SHEET A-450

NOTE: FOR LOCATIONS OF
COMPONENTS SEE SHEET A-400

INITIAL SUBMISSION

PROJECT N° 20110015 / 03862-001

ISSUE DATE: 06.13.2014

ENLARGED BUILDING SKIN COMPONENT - ALLEY TYPICAL 1

COLUMBIA PLACE - BLOCK 369
Square 369, Washington, DC

PUD 369 SUBMISSION

© 2014 Cooper Carry, Inc., 191 Peachtree Street NE, Suite 2400, Atlanta, Georgia 30303 Tel. 404-237-2000 Fax 404-237-0276

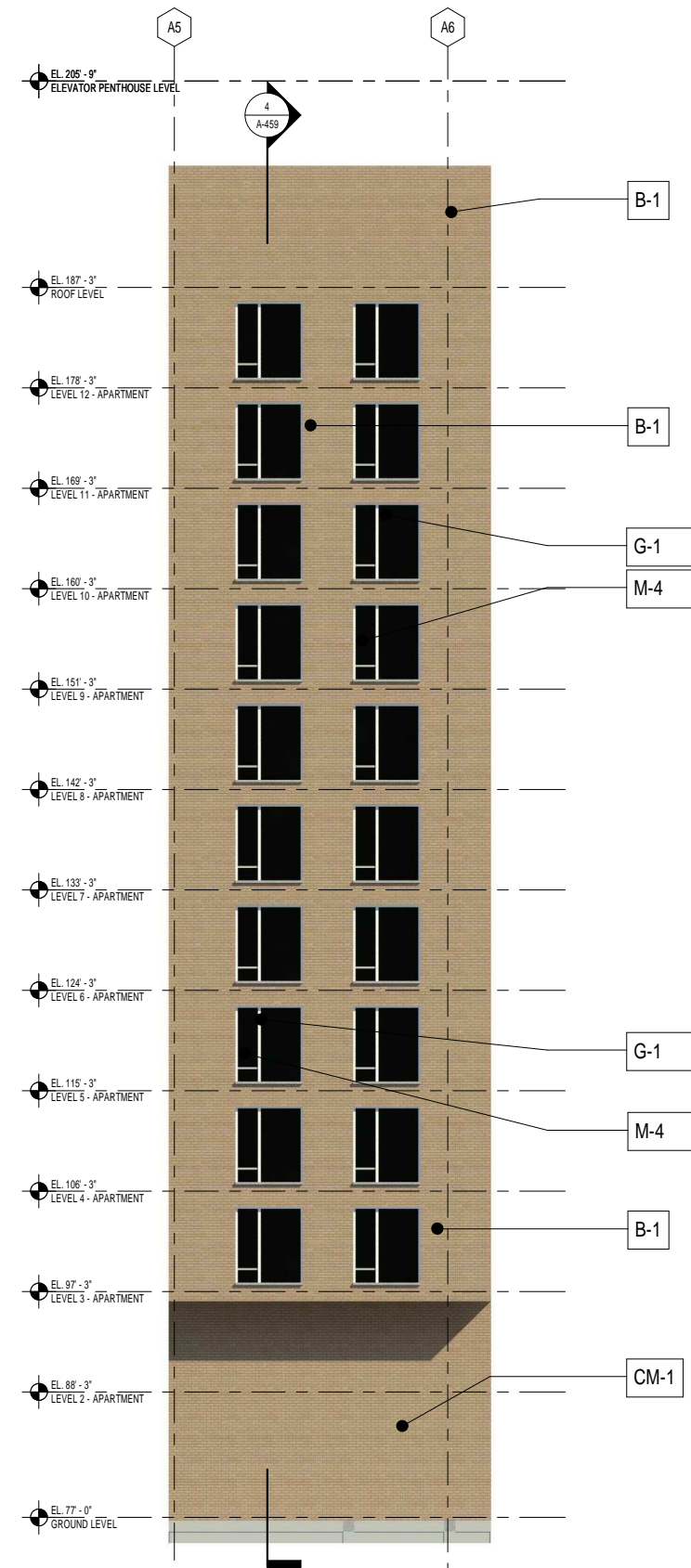
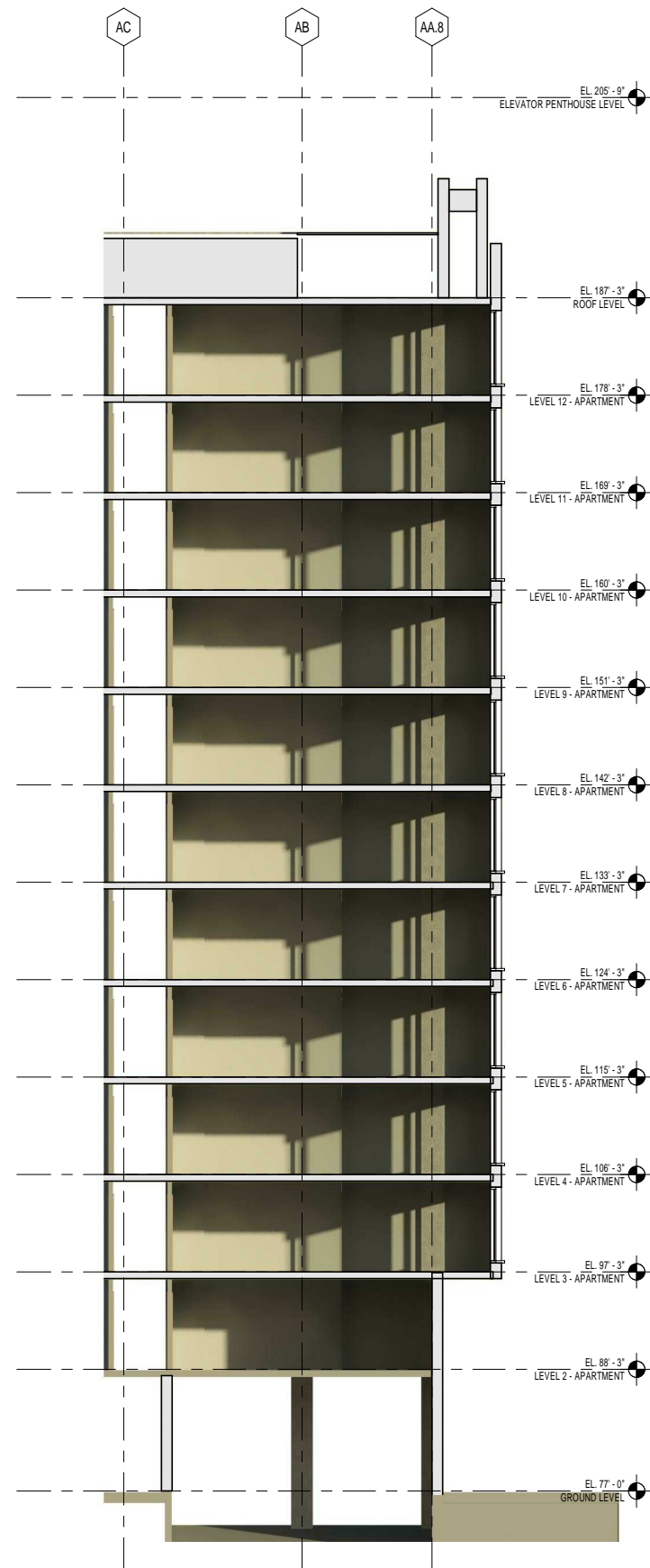


COOPER CARRY

tvsvdesign

PUD 369

A-458



FOR MATERIALS
SEE SHEET A-450

NOTE: FOR LOCATIONS OF
COMPONENTS SEE SHEET A-400

INITIAL SUBMISSION

PROJECT N° 20110015 / 03862-001

ISSUE DATE: 06.13.2014

ENLARGED BUILDING SKIN COMPONENT - ALLEY TYPICAL 2

PUD 369 SUBMISSION

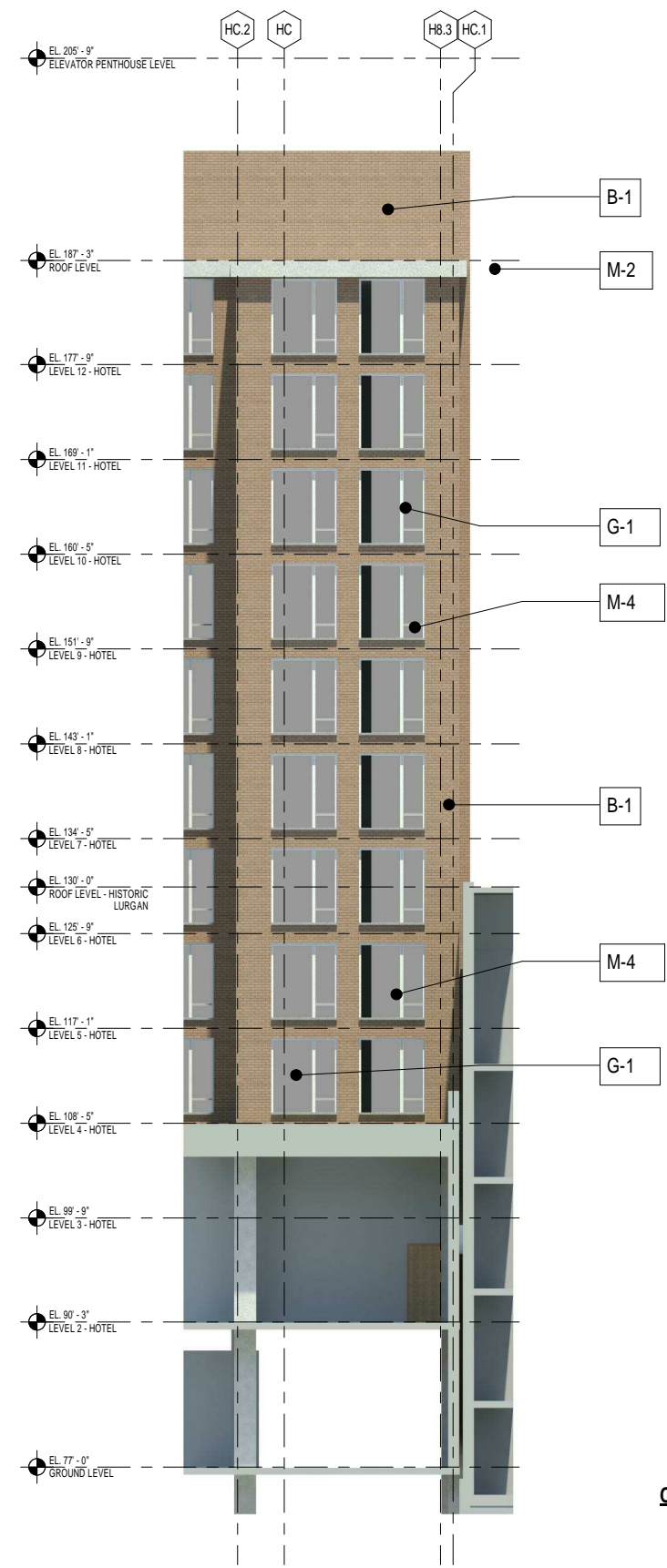
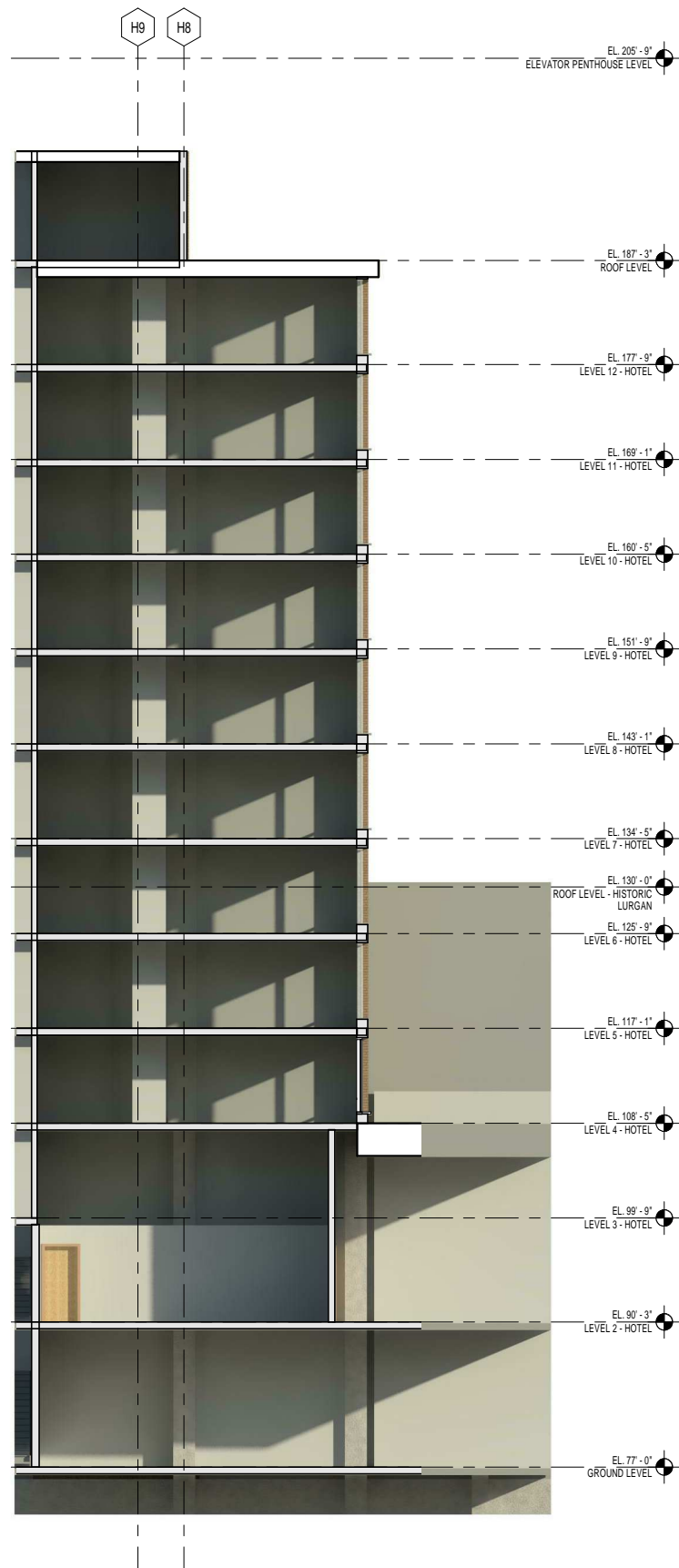
© 2014 Cooper Carry, Inc., 191 Peachtree Street NE, Suite 2400, Atlanta, Georgia 30303 Tel. 404-237-2000 Fax 404-237-0276

COLUMBIA PLACE - BLOCK 369
Square 369, Washington, DC



PUD 369

A-459



FOR MATERIALS
SEE SHEET A-450

NOTE: FOR LOCATIONS OF
COMPONENTS SEE SHEET A-400

INITIAL SUBMISSION

PROJECT N° 20110015 / 03862-001

ISSUE DATE: 06.13.2014

ENLARGED BUILDING SKIN COMPONENT - COURTYARD TYPICAL 1

PUD 369 SUBMISSION

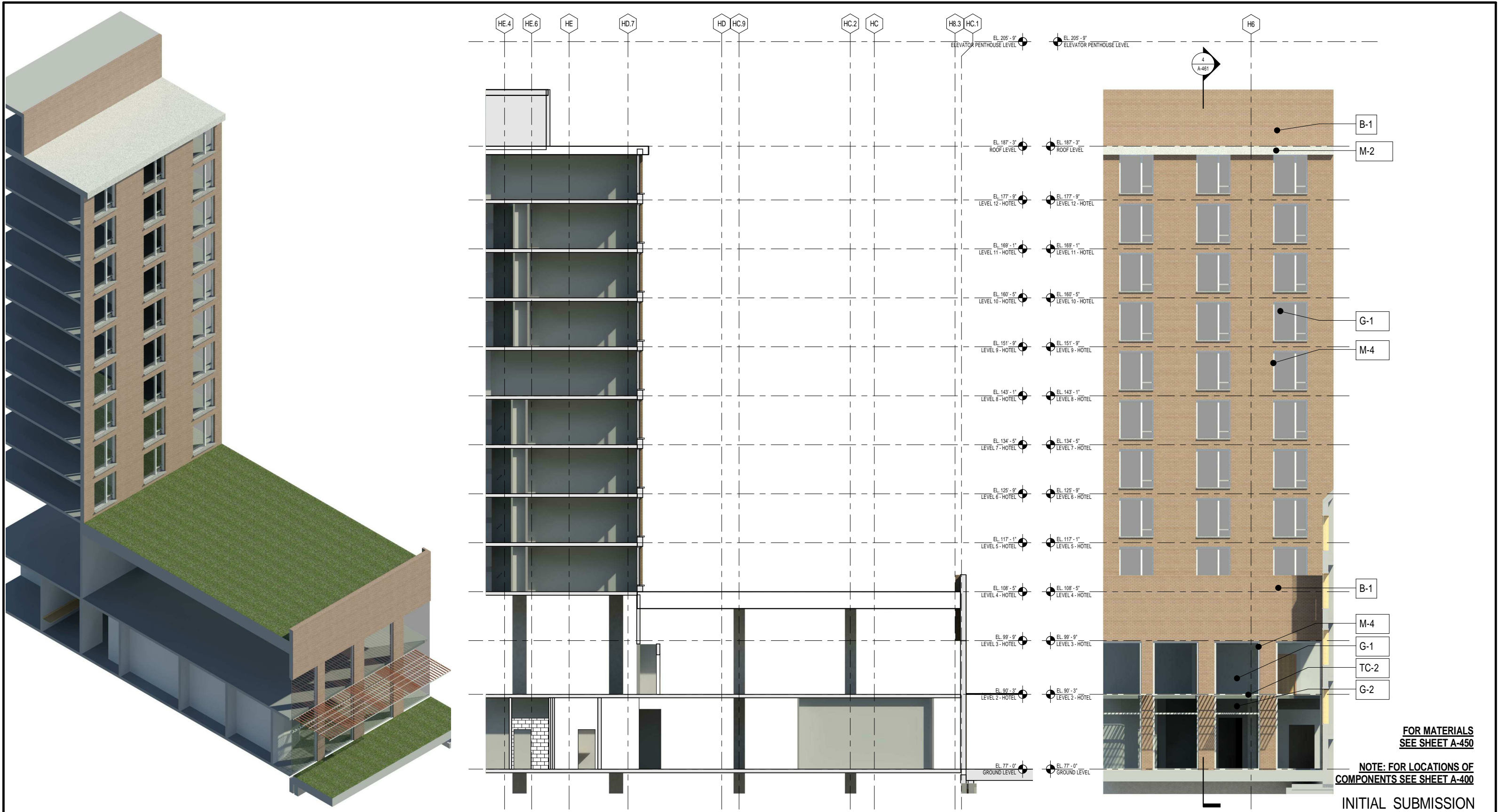
© 2014 Cooper Carry, Inc., 191 Peachtree Street NE, Suite 2400, Atlanta, Georgia 30303 Tel. 404-237-2000 Fax 404-237-0276

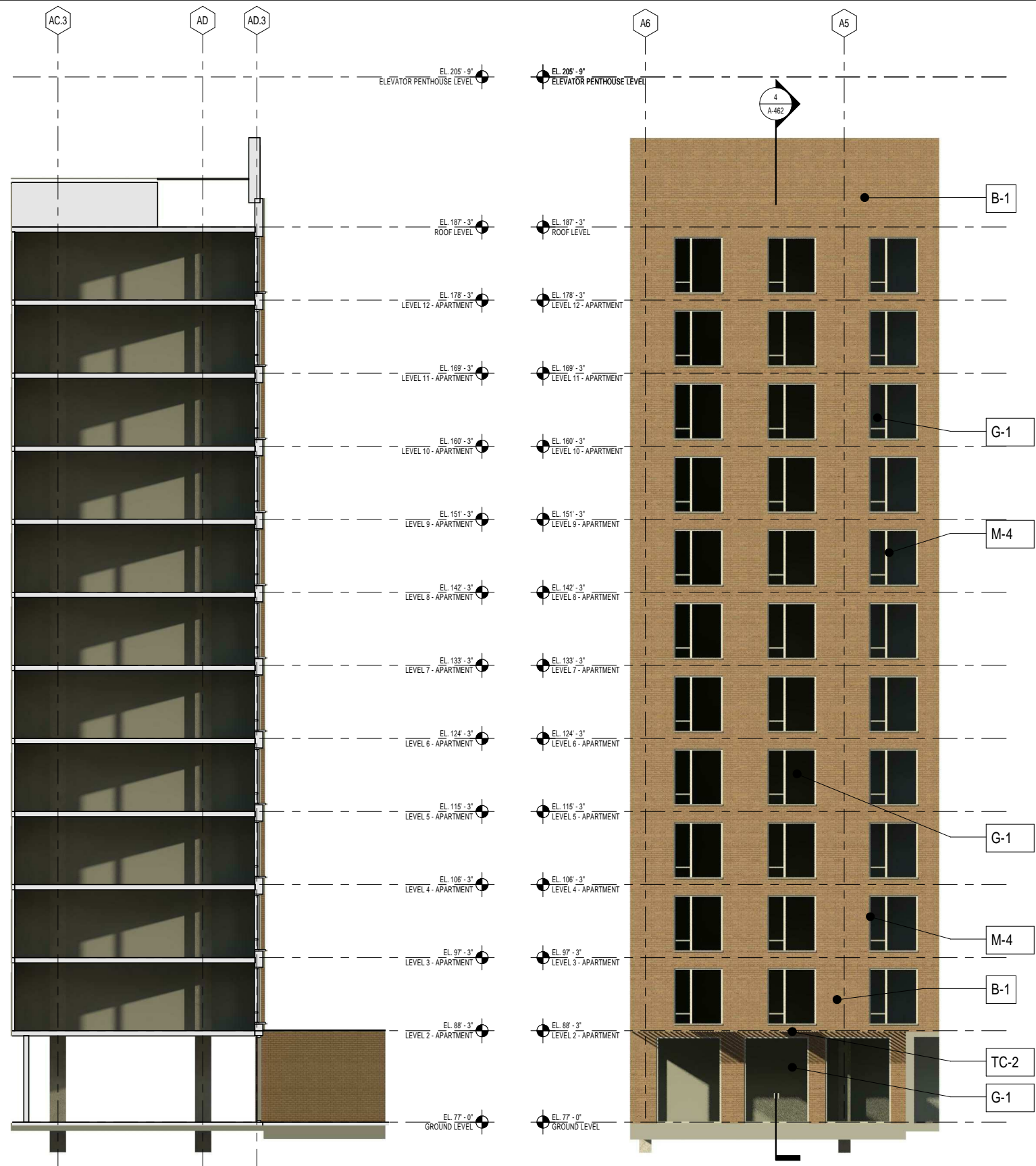
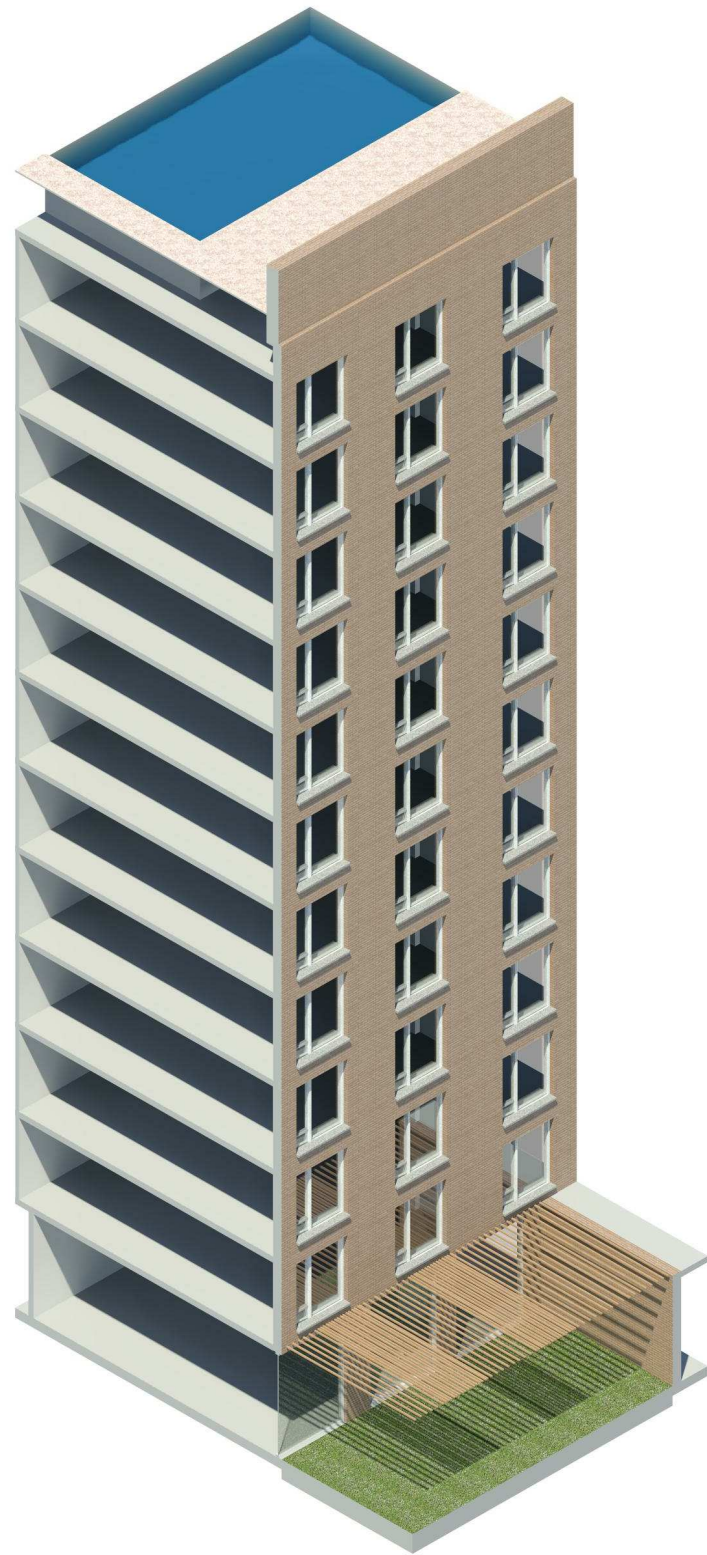
COLUMBIA PLACE - BLOCK 369
Square 369, Washington, DC



PUD 369

A-460





FOR MATERIALS
SEE SHEET A-450

NOTE: FOR LOCATIONS OF
COMPONENTS SEE SHEET A-400

INITIAL SUBMISSION

PROJECT N° 20110015 / 03862-001

ISSUE DATE: 06.13.2014

ENLARGED BUILDING SKIN COMPONENT - COURTYARD TYPICAL 3

COLUMBIA PLACE - BLOCK 369
Square 369, Washington, DC

PUD 369 SUBMISSION

© 2014 Cooper Carry, Inc., 191 Peachtree Street NE, Suite 2400, Atlanta, Georgia 30303 Tel. 404-237-2000 Fax 404-237-0276



COOPER CARRY

tvsvdesign

PUD 369

A-462