

TABULATION OF DEVELOPMENT DATA:
SQUARE: 369
LOTS: 40,65,66,67,801,802,803,804,805,838,839,842,848,859,878,881
LOT AREA: 70,787 SF
ZONING: C-2-A AND C-2-C
EXISTING USE: MULTILEVEL RESIDENTIAL, ABOVEGROUND PARKING
PROPOSED USE: HOTEL, APARTMENTS, RETAIL
PARKING PROVIDED: 233 (BELOW BUILDING)

**PRIVATE ALLEY WITH PUBLIC EASEMENT**

PROJECT N° 20110015 / 03862 | JUNE 13, 2014

PUD 369 SUBMISSION

© 2014 AMT, LLC 10 G ST NE SUITE 430 WASHINGTON, DC 20002 (202) 289-4545

CONCEPT SITE PLAN

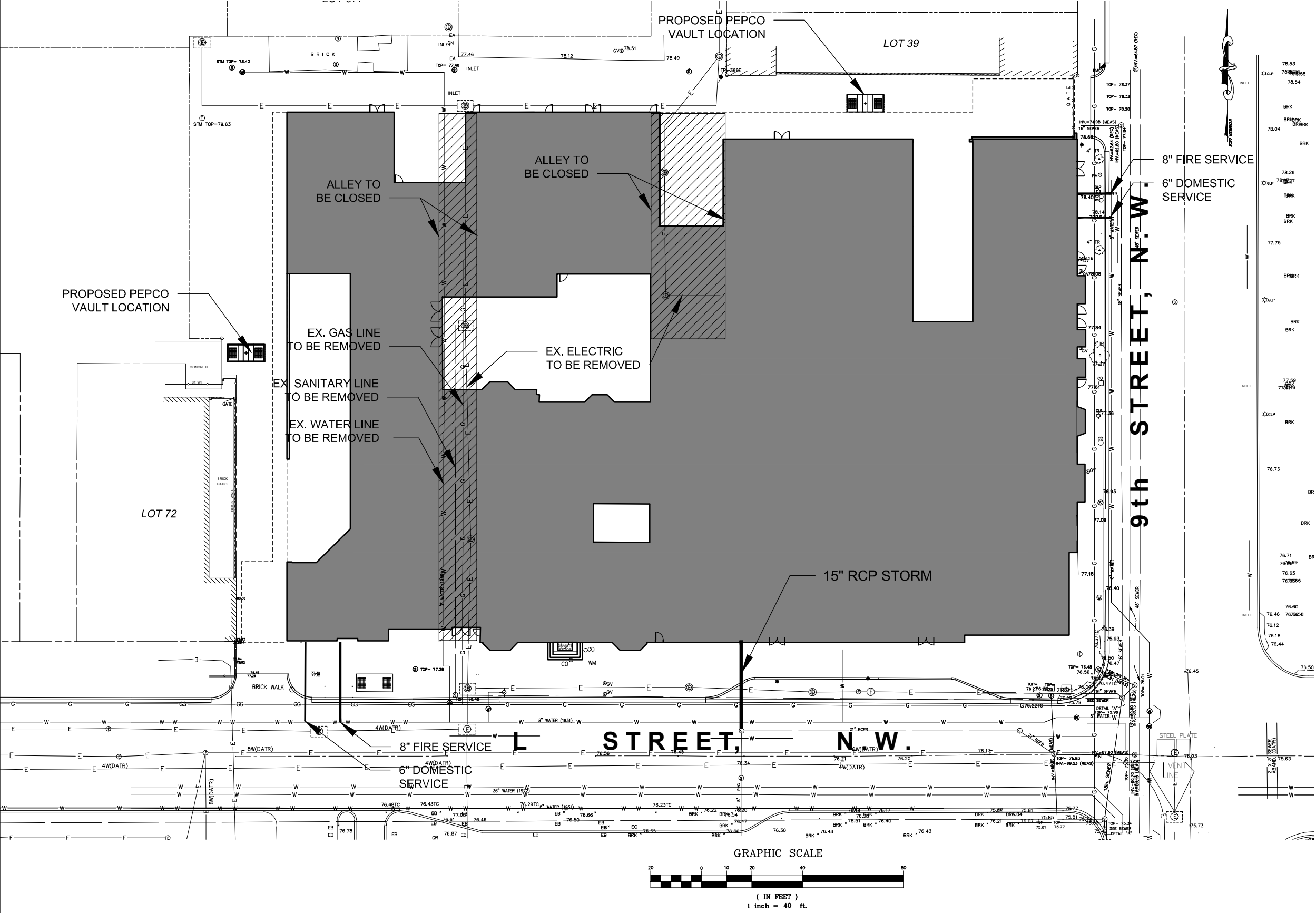
PUD 369  
Square 369, Washington, DC

**AMT** LLC

PROFESSIONAL ENGINEERS  
& LAND SURVEYORS  
10 G STREET, NE, SUITE 430  
WASHINGTON, DC 20002  
PH: (202) 289-4545  
FAX: (202) 289-6061

PUD 369

C 2.1



**SWM AND UTILITY NARRATIVE:**  
THE BUILDING IS PLANNED TO BE SERVED BY FOUR WATER LINES. ONE 6" DOMESTIC AND ONE 8" FIRE LINE WILL CONNECT TO A WATER MAIN IN L ST, NW. ANOTHER 6" DOMESTIC AND 8" FIRE LINE WILL CONNECT TO THE WATER MAIN IN 9TH ST, NW.

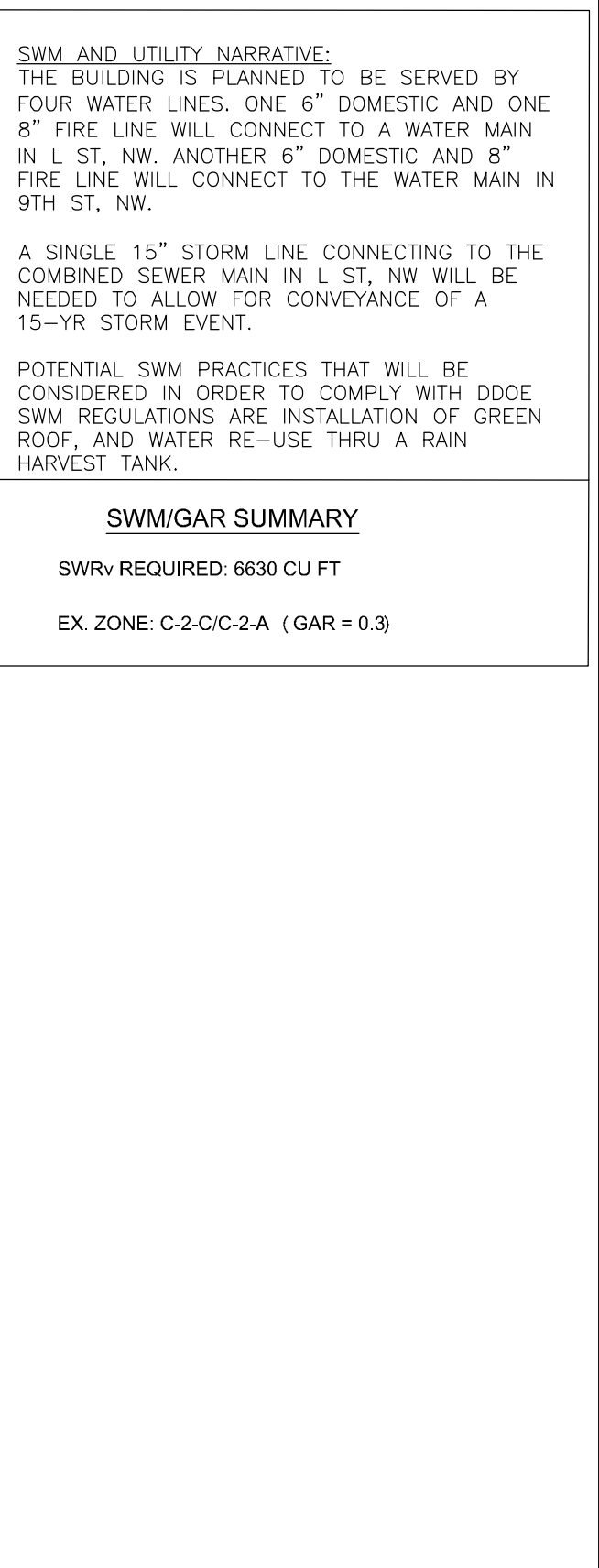
A SINGLE 15" STORM LINE CONNECTING TO THE COMBINED SEWER MAIN IN L ST, NW WILL BE NEEDED TO ALLOW FOR CONVEYANCE OF A 15-YR STORM EVENT.


POTENTIAL SWM PRACTICES THAT WILL BE CONSIDERED IN ORDER TO COMPLY WITH DDOE SWM REGULATIONS ARE INSTALLATION OF GREEN ROOF, AND WATER RE-USE THRU A RAIN HARVEST TANK.

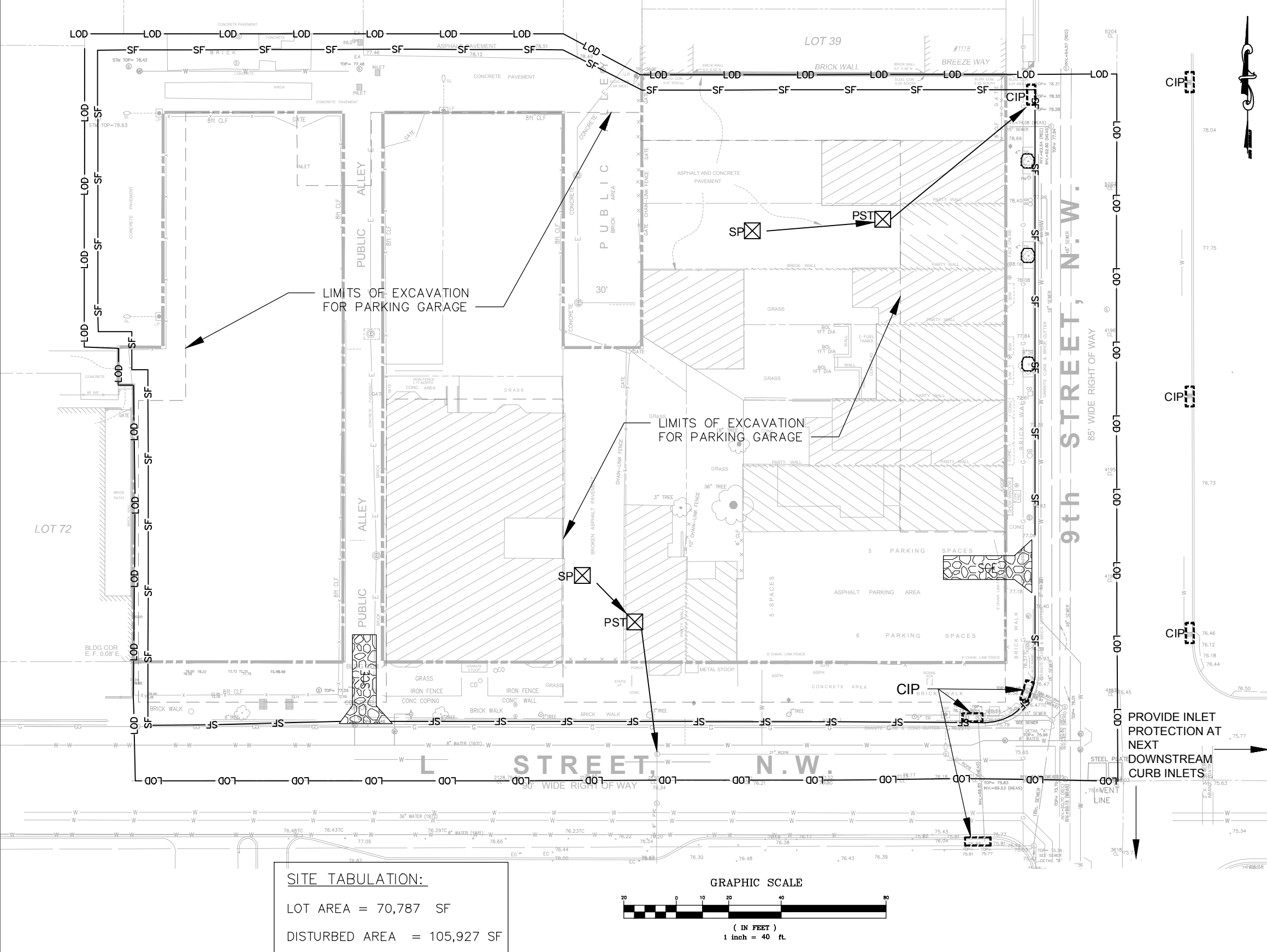
**SWM/GAR SUMMARY**

SWRv REQUIRED: 6630 CU FT


EX. ZONE: C-2-C/C-2-A (GAR = 0.3)



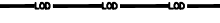
PROJECT N° 20110015 / 03862   JUNE 13, 2014	CONCEPT STORMWATER MANAGEMENT/ UTILITY PLAN		 <small>PROFESSIONAL ENGINEERS &amp; LAND SURVEYORS 10 G STREET, NE, SUITE 430 WASHINGTON, DC 20002 PH: (202) 289-4545 FAX: (202) 289-5051</small>	PUD 369
PUD 369 SUBMISSION	PUD 369 Square 369, Washington, DC			C 3.0




LEGEND




STABILIZED CONSTRUCTION ENTRANCE (SCE)




LIMIT OF DISTURBANCE




SILT FENCE




TREE PROTECTION FENCE



CIP



SUMP PIT



PORTABLE STORAGE TANK

STANDARD EROSION AND SEDIMENT CONTROL SEQUENCE

- CONTACT THE DDOE INSPECTOR PRIOR TO BEGINNING WORK.
- INSTALL ALL EROSION AND SEDIMENT CONTROL MEASURES AS THE FIRST STEP IN DEMOLITION/CONSTRUCTION.
- MAINTAIN EROSION AND SEDIMENT CONTROL MEASURES IN WORKING CONDITION THROUGHOUT CONSTRUCTION.
- ALL CONSTRUCTION TO BE INSPECTED DAILY BY THE CONTRACTOR, AND ANY DAMAGED EROSION AND SEDIMENT CONTROL MEASURES SHALL BE REPAIRED AT THE CLOSE OF THE DAY.
- INSTALL ADDITIONAL EROSION AND SEDIMENT CONTROL MEASURES AS DETERMINED BY THE DDOE INSPECTOR DURING CONSTRUCTION AS REQUIRED BY SITE CONDITIONS.
- NO DISTURBED AREA WILL BE DENUDED FOR MORE THAN 7 CALENDAR DAYS. INSTALL THE NECESSARY TEMPORARY OR PERMANENT VEGETATIVE STABILIZATION MEASURES TO ACHIEVE ADEQUATE EROSION AND SEDIMENT CONTROL.
- EROSION AND SEDIMENT CONTROL MEASURES CAN BE REMOVED AFTER THEIR CONTRIBUTING DRAINAGE AREAS HAVE BEEN PERMANENTLY STABILIZED AND APPROVAL BY THE DDOE INSPECTOR IS OBTAINED.

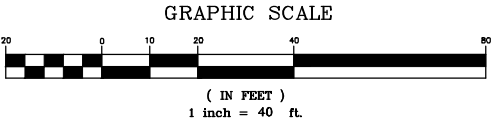
STANDARD EROSION AND SEDIMENT CONTROL NOTES

- EXISTING CONDITIONS: ALL EXISTING CONDITIONS ARE NOT NECESSARILY DEPICTED ON THIS PLAN SHEET. SEE THE EXISTING CONDITIONS PLAN (SHEET C-1.0) FOR ADDITIONAL INFORMATION.
- CALL 'MISS UTILITY' AT (202) 265-7177, or 811, 48 HOURS PRIOR TO THE START OF WORK TO HAVE EXISTING UTILITIES LOCATED AND FIELD-MARKED. VERIFY ALL PUBLIC UTILITY COMPANIES WITH UNDERGROUND FACILITIES IN THE AREA HAVE BEEN CONTACTED PRIOR TO COMMENCING DEMOLITION OR CONSTRUCTION.
- ALL EROSION AND SEDIMENT CONTROL MEASURES SHALL BE PLACED PRIOR TO, OR AS THE FIRST STEP IN, GRADING. PROVIDE TEMPORARY STONE CONSTRUCTION ENTRANCE IF REQUIRED BY INSPECTOR.
- PROVIDE WATER SOURCE AND HOSE TO CLEAN ALL EQUIPMENT LEAVING SITE.
- INSTALL SILT FENCE, AS SHOWN.
- NO DISTURBED AREA WILL BE DENUDED FOR MORE THAN 7 CALENDAR DAYS. INSTALL THE NECESSARY TEMPORARY OR PERMANENT VEGETATIVE STABILIZATION MEASURES TO ACHIEVE ADEQUATE EROSION AND SEDIMENT CONTROL.
- ALL CONSTRUCTION IS TO BE INSPECTED DAILY BY THE CONTRACTOR, AND ANY DAMAGED SILTATION-OR EROSION-CONTROL DEVICES OR MEASURES WILL BE REPAIRED BY THE CLOSE OF THE DAY.
- ALL SILT FENCE IS TO BE MAINTAINED IN WORKING CONDITION.
- STABILIZED CONSTRUCTION ENTRANCES ARE TO BE PERIODICALLY SUPPLEMENTED WITH ADDITIONAL STONE, AS NEEDED.
- CONTROLS CAN BE REMOVED AFTER THEIR CONTRIBUTING BASINS HAVE BEEN PERMANENTLY STABILIZED, AND APPROVAL OF INSPECTOR IS OBTAINED.
- THE AREA OF UTILITY INSTALLATION IS PAVED AND WILL ONLY BE DISTURBED DURING BRIEF PERIODS FOR UTILITY-TRENCH INSTALLATION. TYPICAL EROSION- AND SEDIMENT-CONTROL MEASURES DO NOT APPLY. PLACE ALL EXCAVATED TRENCH MATERIAL ON THE UP-SLOPE SIDE OF THE TRENCH AND OUT OF THE PATH OF ANY STORMWATER RUNOFF. COVER EXCAVATED MATERIAL WITH TARPS. BACKFILL UTILITY TRENCHES AT THE END OF THE DAY AND SCHEDULE UTILITY WORK FOR PERIODS OF DRY WEATHER, TO THE GREATEST EXTENT PRACTICAL. FILTER WATER PUMPED OUT OF TRENCH EXCAVATIONS THROUGH A SILT BAG SEDIMENT-FILTERING DEVICE, PRIOR TO DISCHARGING TO THE STORM SEWER SYSTEM.
- INSTALL TREE-PROTECTION FENCING WHERE THE DRIP LINE OF EXISTING TREES IS LOCATED WITHIN THE CONSTRUCTION SITE. INSTALL TREE-PROTECTION FENCING ALONG THE TREE DRIPLINE. TREE SYMBOLS ON THE PLAN DO NOT ACCURATELY REFLECT LIMITS OF EXISTING TREE DRIPLINES. DO NOT DISTURB, DRIVE, OR PLACE EQUIPMENT WITHIN THE TREE DRIPLINE.

SITE TABULATION:

LOT AREA = 70,787 SF

DISTURBED AREA = 105,927 SF



PROJECT N° 20110015 / 03862   JUNE 13, 2014		CONCEPT EROSION & SEDIMENT CONTROL PLAN		<div>AMT LLC</div> <div>PROFESSIONAL ENGINEERS &amp; LAND SURVEYORS 10 G STREET, NE, SUITE 430 WASHINGTON, DC 20002 PH: (202) 289-4545 FAX: (202) 289-6061</div>	PUD 369
PUD 369 SUBMISSION		PUD 369 <i>Square 369, Washington, DC</i>			C 4.0
© 2014 AMT, LLC 10 G ST NE SUITE 430 WASHINGTON, DC 20002 (202) 289-4545					