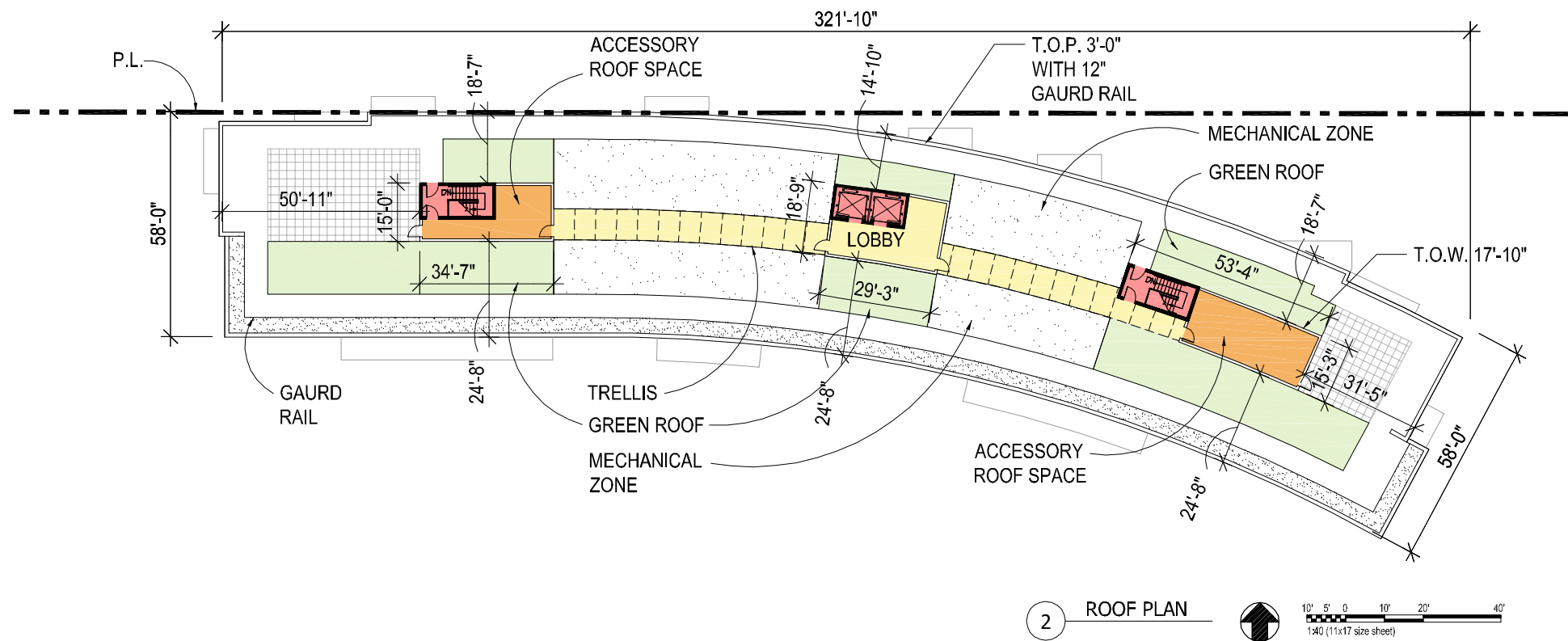




FIRST FLOOR DATA		TOTAL UNITS THIS FLOOR: 11	GSF
TOTAL RESIDENTIAL			7,332
STUDIO	485 SF - 575 SF		
1 BEDROOM	575 SF - 675 SF		
1 BEDROOM + DEN	735 SF - 815 SF		
2 BEDROOM	1,050 SF		
TOTAL AMENITY			2,437
TOTAL CORE/SERVICE AREA (INCLUDES ADMINISTRATIVE, ELEVATORS, STAIRWELLS, CORRIDOR, TRASH, UTILITY, SERVICE & LOADING AREAS)			6,776
TOTAL FLOOR GSF*			16,545

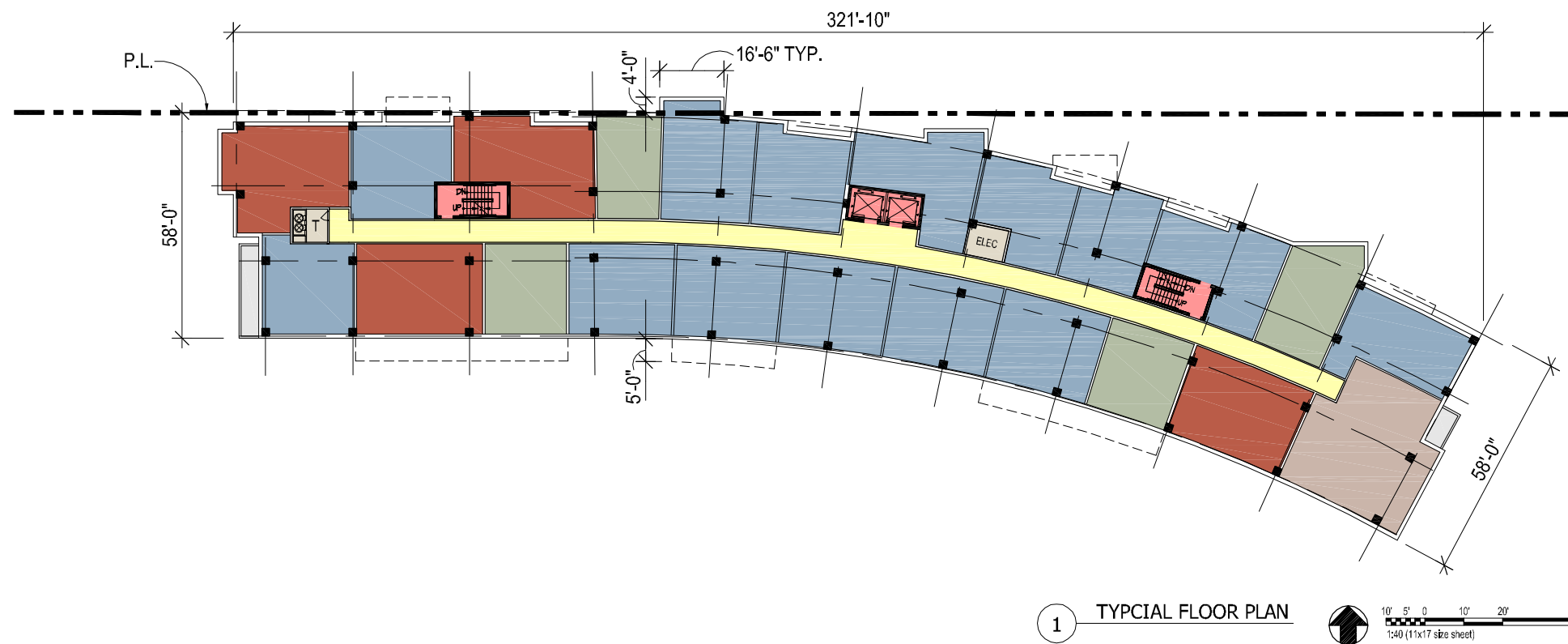
1 FIRST FLOOR PLAN
 10' 5' 0' 10' 20' 40'
 1/40 (11x17 size sheet)

* NOTE:
 1. THE INTERIOR LAYOUTS SHOWN ON THE BUILDING PLANS ARE SCHEMATIC. CHANGES TO THE LAYOUTS, NOT AFFECTING THE EXTERIOR ENVELOPE OR THE SQUARE FOOTAGE DISTRIBUTION MAY OCCUR.
 2. FOR PURPOSES OF COUNTING F.A.R.: GROSS FLOOR AREA DOES NOT INCLUDE: 1) PARKING ACCESS RAMPS.



ROOF PLAN DATA	GSF
TOTAL CORE/SERVICE AREA (INCLUDES ELEVATORS, STAIRWELLS, CORRIDOR, MECHANICAL AND SERVICE AREAS)	2,815 SF*
TOTAL FLOOR GSF*	18,374 SF*
TOTAL GREEN ROOF	3,443 SF

* NOT INCLUDED IN TOTAL GROSS FLOOR AREA CALCULATION

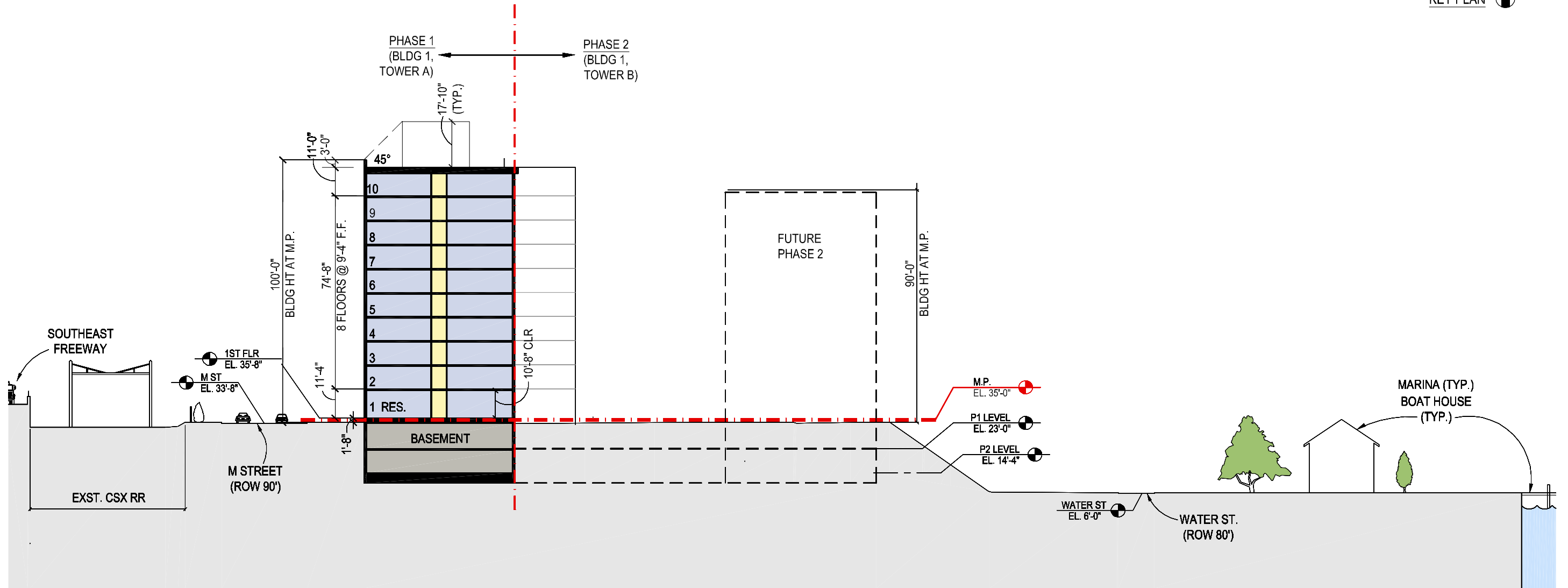
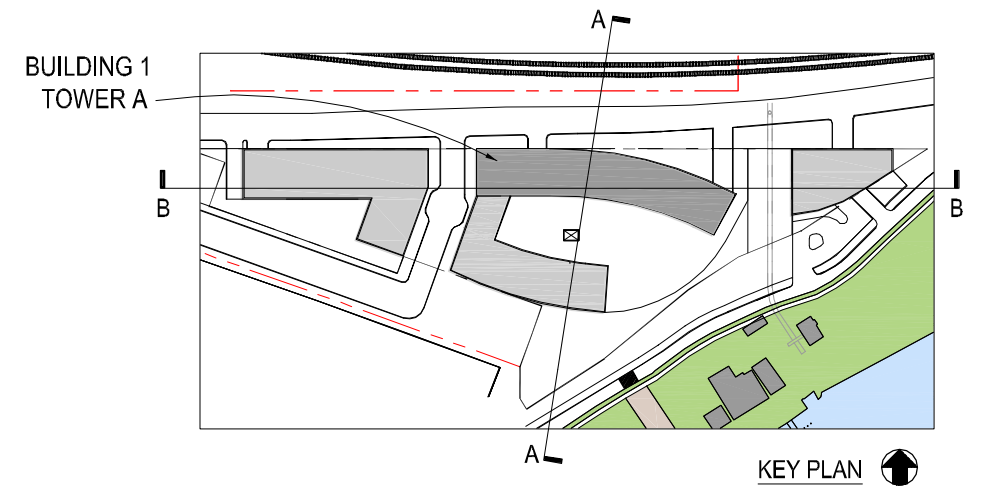


TYPICAL FLOOR DATA	TOTAL UNITS THIS FLOOR: 23	GSF
TOTAL RESIDENTIAL		16,028
STUDIO	485 SF - 575 SF	
1 BEDROOM	575 SF - 675 SF	
1 BEDROOM + DEN	735 SF - 815 SF	
2 BEDROOM	1,050 SF	
TOTAL CORE/SERVICE AREA (INCLUDES ADMINISTRATIVE, ELEVATORS, STAIRWELLS, CORRIDOR, TRASH, UTILITY, SERVICE & LOADING AREAS)		2,346
TOTAL FLOOR GSF*		18,374

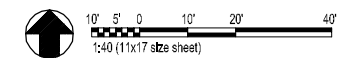
* NOTE:

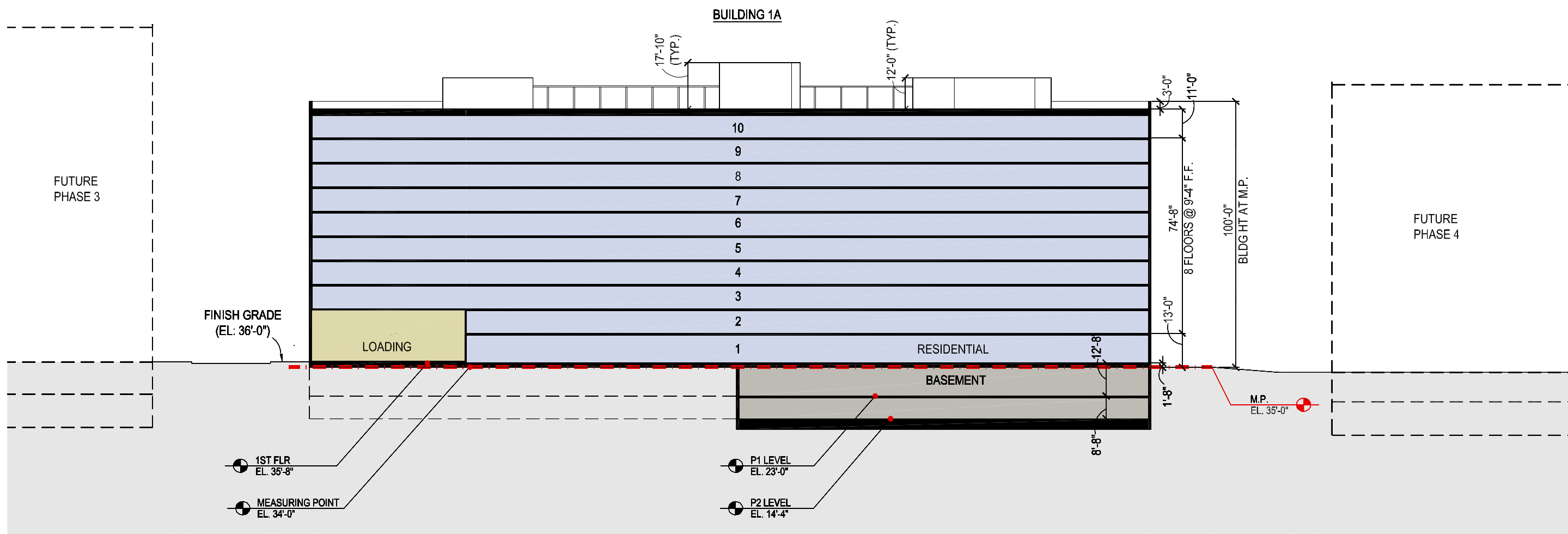
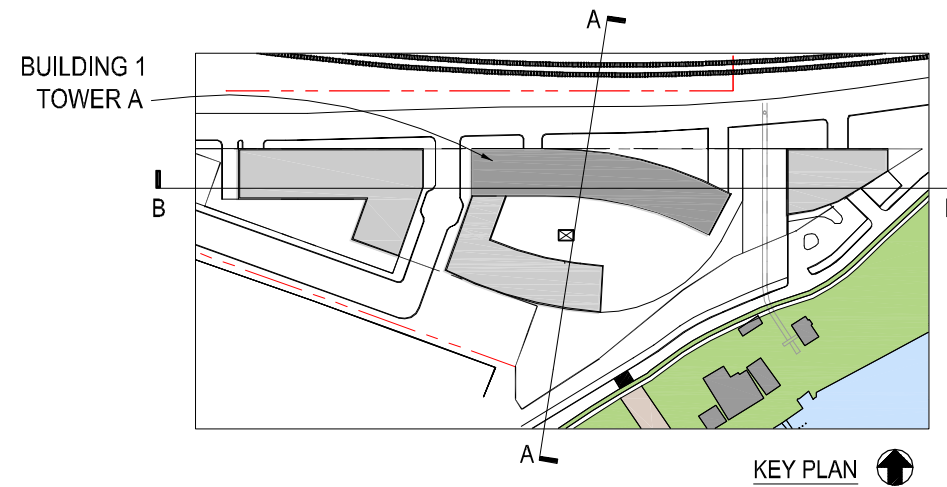
1. THE INTERIOR LAYOUTS SHOWN ON THE BUILDING PLANS ARE SCHEMATIC. CHANGES TO THE LAYOUTS, NOT AFFECTING THE EXTERIOR ENVELOPE OR THE SQUARE FOOTAGE DISTRIBUTION MAY OCCUR.

2. FOR PURPOSES OF COUNTING F.A.R.: GROSS FLOOR AREA DOES NOT INCLUDE: 1) BAYS PROJECTING OVER PROPERTY LINE AND 2) PARKING ACCESS RAMPS.

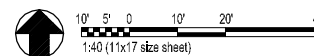


1 BUILDING SECTION A-A





1 BUILDING SECTION B-B





1 VIEW FROM M STREET
SCALE: N.T.S.

1333 M STREET
DATE: 10-30-13

PERSPECTIVE VIEW

23





1 VIEW OF ENTRY ALONG M STREET
SCALE: N.T.S.

1333 M STREET
DATE: 10-30-13

PERSPECTIVE VIEW

24



GTM ARCHITECTS

COHEN COMPANIES



1 COURTYARD VIEW EAST
SCALE: N.T.S.

1333 M STREET
DATE: 10-30-13

PERSPECTIVE VIEW

25





1 COURTYARD VIEW WEST
SCALE: N.T.S.

1333 M STREET
DATE: 10-30-13

PERSPECTIVE VIEW

26





1 COURTYARD VIEW EAST
SCALE: N.T.S.



1 COURTYARD VIEW EAST
SCALE: N.T.S.

1333 M STREET
DATE: 10-30-13

PERSPECTIVE MASSING VIEW

28





1 PERSPECTIVE VIEW LOOKING WEST ON M STREET
SCALE: N.T.S.

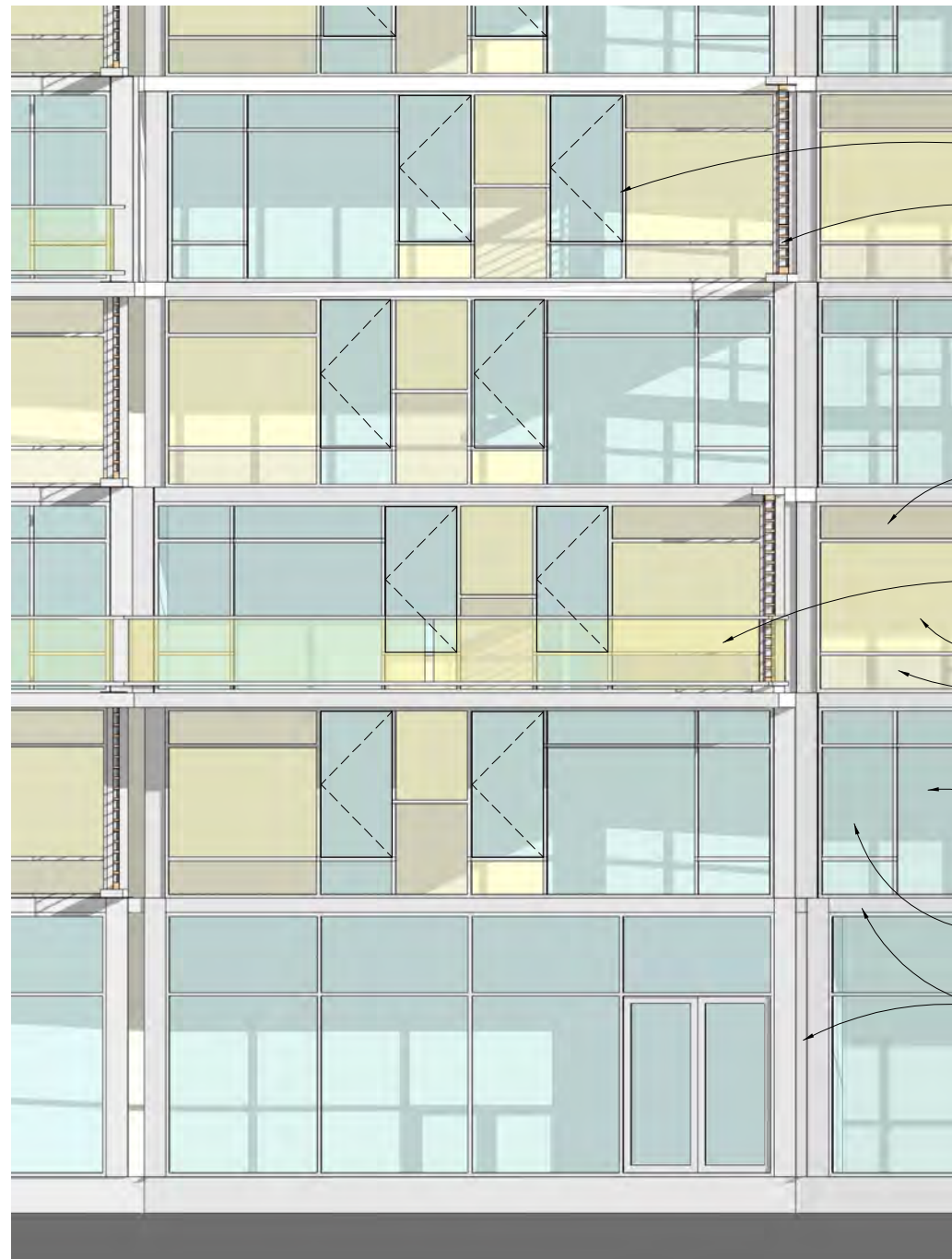
1333 M STREET
DATE: 10-30-13

PERSPECTIVE MASSING VIEW

29







OPERABLE WINDOW UNIT

ALUMINUM & WOOD
SUNSCREEN DEVICE (TYP.)

THERMAL PANE ALUMINUM
STOREFRONT SYSTEM WITH
COLORED SPANDREL GLASS

DECORATIVE HPL PANEL AT
BALCONY RAILING *

SPANDREL GLASS COLOR 'A'

SPANDREL GLASS COLOR 'C'

THERMAL PANE ALUMINUM
STOREFRONT SYSTEM WITH
TINTED GLASS

SPANDREL GLASS COLOR 'B'

COMPOSITE METAL PANEL
SLAB AND COLUMN COVER



1 ENLARGED SOUTH ELEVATION
SCALE: 1/8"=1'-0"

2 ENLARGED SOUTH ELEVATION
SCALE: 1/8"=1'-0"

*HPL - DECORATIVE HIGH PRESSURE LAMINATE WITH INTEGRAL SURFACE



- OPERABLE WINDOW UNIT (TYP.)
- THERMAL PANE ALUMINUM WINDOWS AND DOORS
- GLASS BALCONY RAILING
- HPL PANEL AT BAY PROJECTION, COLOR 'A' (TYP.)*
- HPL PANEL, COLOR 'B' (TYP.)*
- COMPOSITE METAL PANEL
- 1/4" REVEAL AT PANEL JOINTS, TYP.
- COMPOSITE METAL PANEL SLAB & COLUMN COVER (TYP.)
- HPL PANEL, COLOR 'A' (TYP.)*
- HPL PANEL, COLOR 'E' (TYP.)*
- HPL PANEL, COLOR 'D' (TYP.)*



1 ENLARGED NORTH ELEVATION
SCALE: 1/8"=1'-0"

2 ENLARGED NORTH ELEVATION
SCALE: 1/8"=1'-0"

*HPL - DECORATIVE HIGH PRESSURE LAMINATE WITH INTEGRAL SURFACE



COMPOSITE METAL PANEL & SLAB EDGE (TYP.)

HPL PANEL AT BAY PROJECTION, COLOR 'C' *

FIXED WINDOW, TYP.

HPL PANEL, COLOR 'A' (TYP.) *

1/4" REVEAL AT PANEL JOINTS, TYP.

THERMAL PANE ALUMINUM WINDOWS AND DOORS

GLASS BALCONY RAILING

HPL PANEL, COLOR 'E' (TYP.) *

COMPOSITE METAL PANEL (TYP.)



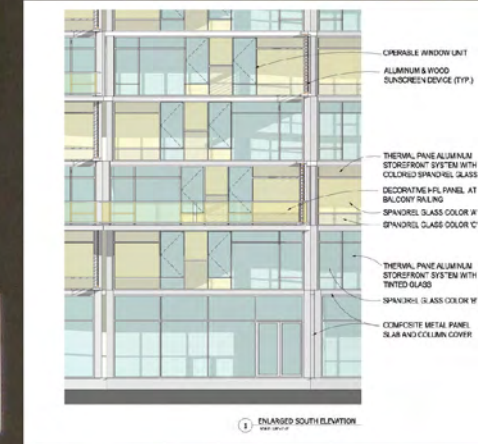
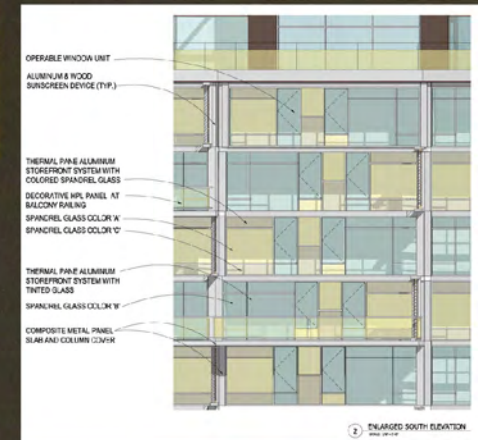
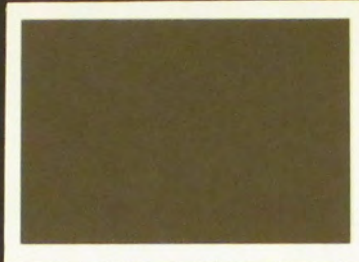
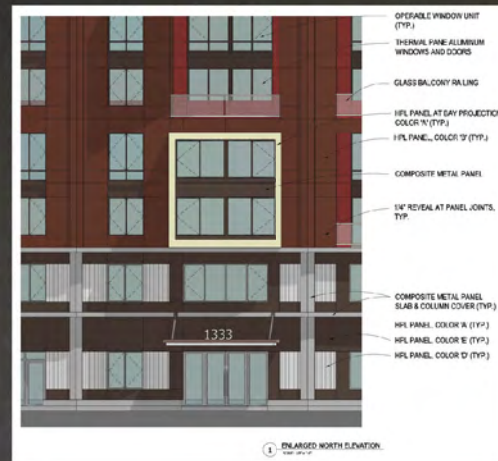
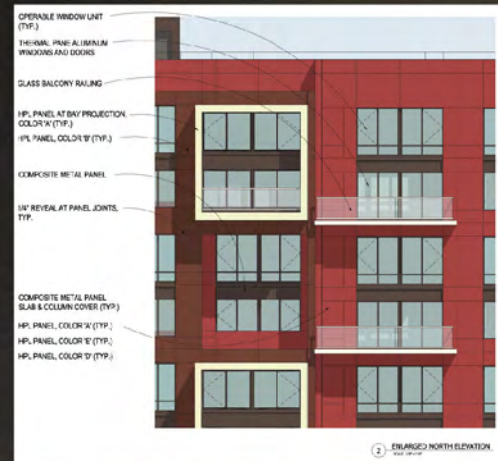
1 ENLARGED WEST ELEVATION
SCALE: 1/8"=1'-0"

2 ENLARGED EAST ELEVATION
SCALE: 1/8"=1'-0"

*HPL - DECORATIVE HIGH PRESSURE LAMINATE WITH INTEGRAL SURFACE

NORTH ELEVATION

SOUTH ELEVATION



1333 M STREET ARCHITECTURAL FINISHES



LEED 2009 for New Construction and Major Renovations

Project Checklist

Project Name

Date

17 5 4 Sustainable Sites Possible Points: 26

Y	?	N			
Y			Prereq 1	Construction Activity Pollution Prevention	
1			Credit 1	Site Selection	1
5			Credit 2	Development Density and Community Connectivity	5
	1		Credit 3	Brownfield Redevelopment	1
6			Credit 4.1	Alternative Transportation—Public Transportation Access	6
1			Credit 4.2	Alternative Transportation—Bicycle Storage and Changing Rooms	1
	3		Credit 4.3	Alternative Transportation—Low-Emitting and Fuel-Efficient Vehicles	3
2			Credit 4.4	Alternative Transportation—Parking Capacity	2
	1		Credit 5.1	Site Development—Protect or Restore Habitat	1
	1		Credit 5.2	Site Development—Maximize Open Space	1
1			Credit 6.1	Stormwater Design—Quantity Control	1
1			Credit 6.2	Stormwater Design—Quality Control	1
	1		Credit 7.1	Heat Island Effect—Non-roof	1
1			Credit 7.2	Heat Island Effect—Roof	1
	1		Credit 8	Light Pollution Reduction	1

2 2 2 Water Efficiency Possible Points: 10

Y	?	N			
Y			Prereq 1	Water Use Reduction—20% Reduction	
2			Credit 1	Water Efficient Landscaping	2 to 4
	2		Credit 2	Innovative Wastewater Technologies	2
2			Credit 3	Water Use Reduction	2 to 4

5 8 Energy and Atmosphere Possible Points: 35

Y	?	N			
Y			Prereq 1	Fundamental Commissioning of Building Energy Systems	
Y			Prereq 2	Minimum Energy Performance	
Y			Prereq 3	Fundamental Refrigerant Management	
3			Credit 1	Optimize Energy Performance	1 to 19
	1		Credit 2	On-Site Renewable Energy	1 to 7
	2		Credit 3	Enhanced Commissioning	2
2			Credit 4	Enhanced Refrigerant Management	2
	3		Credit 5	Measurement and Verification	3
	2		Credit 6	Green Power	2

5 3 Materials and Resources Possible Points: 14

Y	?	N			
Y			Prereq 1	Storage and Collection of Recyclables	
	1		Credit 1.1	Building Reuse—Maintain Existing Walls, Floors, and Roof	1 to 3
	1		Credit 1.2	Building Reuse—Maintain 50% of Interior Non-Structural Elements	1
1			Credit 2	Construction Waste Management	1 to 2
	1		Credit 3	Materials Reuse	1 to 2

Materials and Resources, Continued

Y	?	N			
1			Credit 4	Recycled Content	1 to 2
1			Credit 5	Regional Materials	1 to 2
1			Credit 6	Rapidly Renewable Materials	1
1			Credit 7	Certified Wood	1

10 5 Indoor Environmental Quality Possible Points: 15

Y	?	N			
Y			Prereq 1	Minimum Indoor Air Quality Performance	
Y			Prereq 2	Environmental Tobacco Smoke (ETS) Control	
1			Credit 1	Outdoor Air Delivery Monitoring	1
	1		Credit 2	Increased Ventilation	1
1			Credit 3.1	Construction IAQ Management Plan—During Construction	1
1			Credit 3.2	Construction IAQ Management Plan—Before Occupancy	1
1			Credit 4.1	Low-Emitting Materials—Adhesives and Sealants	1
1			Credit 4.2	Low-Emitting Materials—Paints and Coatings	1
1			Credit 4.3	Low-Emitting Materials—Flooring Systems	1
1			Credit 4.4	Low-Emitting Materials—Composite Wood and Agrifiber Products	1
1			Credit 5	Indoor Chemical and Pollutant Source Control	1
1			Credit 6.1	Controllability of Systems—Lighting	1
1			Credit 6.2	Controllability of Systems—Thermal Comfort	1
	1		Credit 7.1	Thermal Comfort—Design	1
	1		Credit 7.2	Thermal Comfort—Verification	1
	1		Credit 8.1	Daylight and Views—Daylight	1
	1		Credit 8.2	Daylight and Views—Views	1

2 Innovation and Design Process Possible Points: 6

Y	?	N			
1			Credit 1.1	Innovation in Design: Specific Title	1
			Credit 1.2	Innovation in Design: Specific Title	1
			Credit 1.3	Innovation in Design: Specific Title	1
			Credit 1.4	Innovation in Design: Specific Title	1
			Credit 1.5	Innovation in Design: Specific Title	1
1			Credit 2	LEED Accredited Professional	1

Regional Priority Credits Possible Points: 4

Y	?	N			
			Credit 1.1	Regional Priority: Specific Credit	1
			Credit 1.2	Regional Priority: Specific Credit	1
			Credit 1.3	Regional Priority: Specific Credit	1
			Credit 1.4	Regional Priority: Specific Credit	1

41 20 9 Total Possible Points: 110

Certified 40 to 49 points Silver 50 to 59 points Gold 60 to 79 points Platinum 80 to 110

