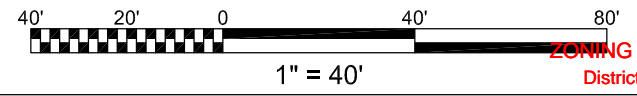


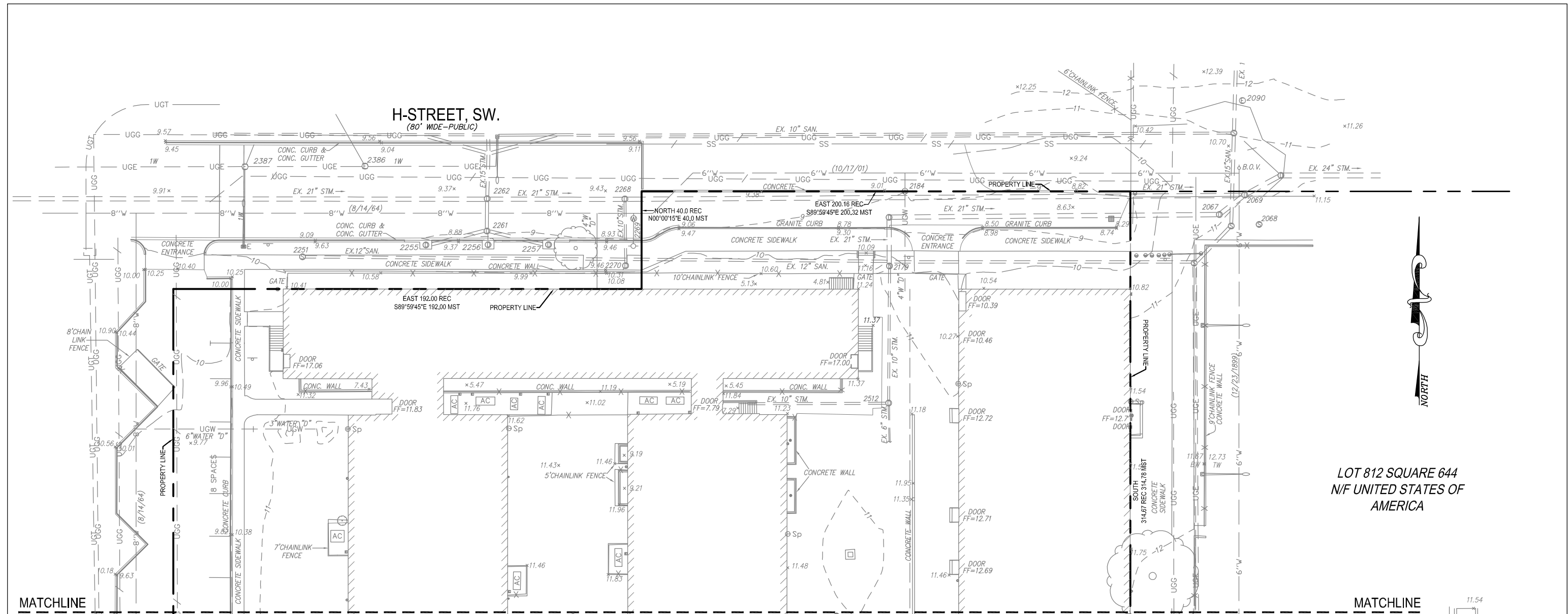
MANHOLE TABLE

91 STORM MANHOLE TOP=9.04 FILLED W/DEBRIS	320 WATER MANHOLE TOP=10.32 BOTTOM=7.94	423 STORM MANHOLE TOP=8.95 FILLED W/WATER	2067 SEWER MANHOLE TOP=10.97 ? 12" INV=-1.40(W) 12" INV=3.70(W) ? 12" INV=-2.68(NE)	2251 SEWER MANHOLE TOP=9.90 6" INV=4.59(W) 12" INV=4.19(E)	2269 WATER MANHOLE TOP=9.29 INACCESSIBLE
133 SEWER MANHOLE TOP=10.89 ? 10" INV=-5.85(N) ? 10" INV=-5.58(S)	329 ELECTRIC MANHOLE TOP=9.68 BOTTOM=-1.17	433 ELECTRIC MANHOLE TOP=8.57 BOTTOM=1.87	2068 SEWER MANHOLE TOP=11.15 ? 12" INV=-4.66(N) ? 12" INV=-4.64(SW)	2255 STORM MANHOLE TOP=9.51 FILLED W/DEBRIS	2270 SEWER MANHOLE TOP=9.82 10" INV=1.54(N) 8" INV=2.40(E)
179 TELEPHONE MANHOLE TOP=15.69 BOTTOM=3.94	330 ELECTRIC MANHOLE TOP=9.70 BOTTOM=-1.05	448 STORM MANHOLE TOP=8.77 FILLED W/WATER	2069 SEWER MANHOLE TOP=10.98 21" INV=-1.54(W) ? 12" INV=-1.54(SW) 24" INV=-1.81(NE)	2256 STORM MANHOLE TOP=9.49 FILLED W/DEBRIS	2386 ELECTRIC MANHOLE TOP=9.38 BOTTOM=6.98
180 TELEPHONE MANHOLE TOP=15.95 BOTTOM=3.80	345 SEWER MANHOLE TOP=9.41 ? 10" INV=-5.07(N) 10" INV=-1.28(W) 10" INV=-5.18(S)	1231 STORM MANHOLE TOP=8.70 FILLED W/WATER	2090 ELECTRIC MANHOLE TOP=11.46 INACCESSIBLE	2257 STORM MANHOLE TOP=9.48 FILLED W/DEBRIS	2387 ELECTRIC MANHOLE TOP=9.60 BOTTOM=7.10
183 TELEPHONE MANHOLE TOP=15.86 BOTTOM=3.82	378 ELECTRIC MANHOLE TOP=9.14 BOTTOM=-0.71	1306 STORM MANHOLE TOP=8.99 FILLED W/WATER	2179 SEWER MANHOLE TOP=11.18 21" INV=-0.12(N) 4" INV=7.07(S) 10" INV=3.22(S)	2261 SEWER MANHOLE TOP=9.11 FILLED W/DEBRIS	2512 SEWER MANHOLE TOP=11.57 10" INV=3.35(N) 10" INV=3.45(W) 6" INV=6.21(S)
261 ELECTRIC MANHOLE TOP=13.99 BOTTOM=4.61	394 WATER MANHOLE TOP=9.28 BOTTOM=7.08	1344 STORM MANHOLE TOP=9.07 FILLED W/DEBRIS	2184 WATER MANHOLE TOP=9.01 BOTTOM=6.31	2262 SEWER MANHOLE TOP=9.37 15" INV=3.90(N) 21" INV=0.55(W) 15" INV=5.07(S) 21" INV=0.47(E)	2516 UTILITY MANHOLE (FUEL) TOP=11.61 TOP OF TANK=8.56 BOTTOM=-1.89
287 STORM MANHOLE TOP=11.87 FILLED W/DEBRIS	396 ELECTRIC MANHOLE TOP=9.04 BOTTOM=1.16	1477 STORM MANHOLE TOP=7.40 BOTTOM=0.50 SUMP PUMP		2268 SEWER MANHOLE TOP=9.52 INACCESSIBLE	2519 STEAM MANHOLE TOP=11.84 BOTTOM=7.94
318 ELECTRIC MANHOLE TOP=10.50 BOTTOM=1.52					2656 UTILITY MANHOLE TOP = 11.61 BOTTOM = 7.1



1" = 40'
TITLE: EXISTING CONDITIONS PLAN SOUTH
NUMBER:

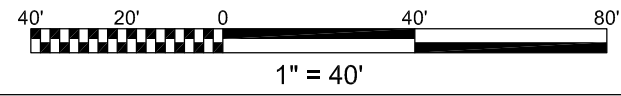
ZONING COMMISSION
District of Columbia
CASE NO.07-13D
EXHIBIT NO.4A3



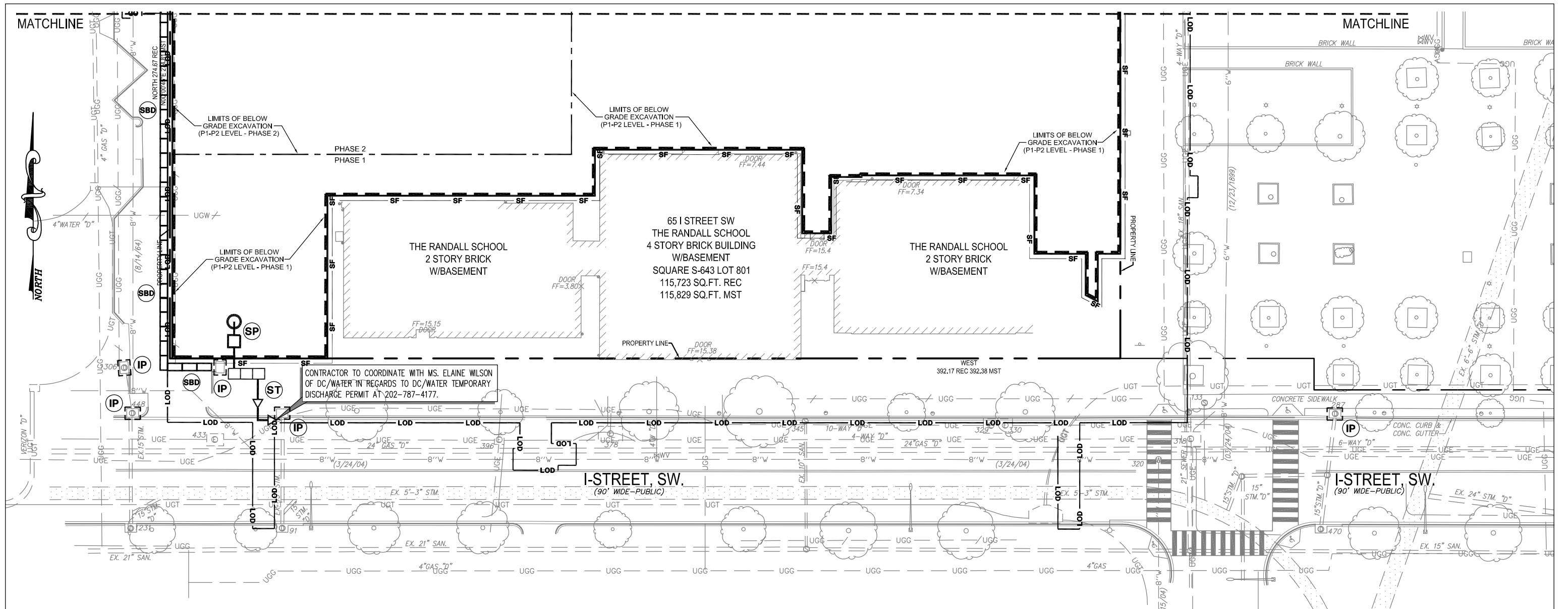
LOT 812 SQUARE 644
N/F UNITED STATES OF
AMERICA

MANHOLE TABLE

91 STORM MANHOLE TOP=9.04 FILLED W/DEBRIS	320 WATER MANHOLE TOP=10.32 BOTTOM=7.94	423 STORM MANHOLE TOP=8.95 FILLED W/WATER	2067 SEWER MANHOLE TOP=10.97 6" INV=-1.40(W) 12" INV=3.70(W) ? INV=-2.68(NE)	2251 SEWER MANHOLE TOP=9.90 6" INV=4.59(W) 12" INV=4.19(E)	2269 WATER MANHOLE TOP=9.29 INACCESSIBLE
133 SEWER MANHOLE TOP=10.89 ? INV=-5.85(N) ? INV=-5.58(S)	329 ELECTRIC MANHOLE TOP=9.68 BOTTOM=-1.17	433 ELECTRIC MANHOLE TOP=8.57 BOTTOM=1.87	2068 SEWER MANHOLE TOP=11.15 ? INV=-4.66(N) ? INV=-4.64(SW)	2255 STORM MANHOLE TOP=9.51 FILLED W/DEBRIS	2270 SEWER MANHOLE TOP=9.82 10" INV=1.54(N) 8" INV=2.40(E)
179 TELEPHONE MANHOLE TOP=15.69 BOTTOM=3.94	330 ELECTRIC MANHOLE TOP=9.70 BOTTOM=-1.05	448 STORM MANHOLE TOP=8.77 FILLED W/WATER	2069 SEWER MANHOLE TOP=10.98 21" INV=-1.54(W) ? INV=-1.54(SW) 24" INV=-1.81(NE)	2256 STORM MANHOLE TOP=9.49 FILLED W/DEBRIS	2386 ELECTRIC MANHOLE TOP=9.38 BOTTOM=6.98
180 TELEPHONE MANHOLE TOP=15.95 BOTTOM=3.80	345 SEWER MANHOLE TOP=9.41 ? INV=-5.07(N) 10" INV=-1.28(W) 10" INV=-5.18(S)	470 STORM MANHOLE TOP=11.48 FILLED W/WATER	2090 ELECTRIC MANHOLE TOP=11.46 INACCESSIBLE	2257 STORM MANHOLE TOP=9.48 FILLED W/DEBRIS	2387 ELECTRIC MANHOLE TOP=9.60 BOTTOM=7.10
183 TELEPHONE MANHOLE TOP=15.86 BOTTOM=3.82	378 ELECTRIC MANHOLE TOP=9.14 BOTTOM=-0.71	1231 STORM MANHOLE TOP=8.70 FILLED W/WATER	2179 SEWER MANHOLE TOP=11.18 21" INV=-0.12(N) 4" INV=7.07(S) 10" INV=3.22(S)	2261 SEWER MANHOLE TOP=9.11 FILLED W/DEBRIS	2512 SEWER MANHOLE TOP=11.57 10" INV=3.35(N) 10" INV=3.45(W) 6" INV=6.21(S)
261 ELECTRIC MANHOLE TOP=13.99 BOTTOM=4.61	394 WATER MANHOLE TOP=9.28 BOTTOM=7.08	1306 STORM MANHOLE TOP=8.99 FILLED W/WATER	2184 WATER MANHOLE TOP=9.01 BOTTOM=6.31	2262 SEWER MANHOLE TOP=9.37 15" INV=3.90(N) 21" INV=0.55(W) 15" INV=5.07(S) 21" INV=0.47(E)	2516 UTILITY MANHOLE (FUEL) TOP=11.61 TOP OF TANK=8.56 BOTTOM=-1.89
287 STORM MANHOLE TOP=11.87 FILLED W/DEBRIS	396 ELECTRIC MANHOLE TOP=9.04 BOTTOM=1.16	1344 STORM MANHOLE TOP=9.07 FILLED W/DEBRIS		2268 SEWER MANHOLE TOP=9.52 INACCESSIBLE	2519 STEAM MANHOLE TOP=11.84 BOTTOM=7.94
318 ELECTRIC MANHOLE TOP=10.50 BOTTOM=1.52		1477 STORM MANHOLE TOP=7.40 BOTTOM=0.50 SUMP PUMP			2656 UTILITY MANHOLE TOP = 11.61 BOTTOM = 7.1



1" = 40'
TITLE: EXISTING CONDITIONS PLAN NORTH
NUMBER: C-02



CONTRACTOR TO COORDINATE WITH MS. ELAINE WILSON OF DC/WATER IN REGARDS TO DC/WATER TEMPORARY DISCHARGE PERMIT AT 202-787-4177.

DUST CONTROL NOTES:

1. THE CONTRACTOR SHALL CONDUCT OPERATIONS AND MAINTAIN THE PROJECT SITE AS TO MINIMIZE THE CREATION AND DISPERSION OF DUST. DUST CONTROL SHALL BE USED THROUGHOUT THE WORK AT THE SITE.
2. THE CONTRACTOR MUST PROVIDE CLEAN WATER, FREE FROM SALT, OIL AND OTHER DELETERIOUS MATERIAL TO BE USED FOR ON-SITE DUST CONTROL.
3. THE CONTRACTOR SHALL SUPPLY WATER SPRAYING EQUIPMENT CAPABLE OF ACCESSING ALL WORK AREAS.
4. THE CONTRACTOR SHALL IMPLEMENT STRICT DUST CONTROL MEASURES DURING ACTIVE CONSTRUCTION PERIODS ON-SITE. THESE CONTROL MEASURES WILL GENERALLY CONSIST OF WATER APPLICATIONS THAT SHALL BE APPLIED A MINIMUM OF ONCE PER DAY DURING DRY WEATHER OR MORE OFTEN AS REQUIRED TO PREVENT DUST EMISSIONS.
5. FOR WATER APPLICATION TO UNDISTURBED SOIL SURFACES, THE CONTRACTOR SHALL:
 - A. APPLY WATER WITH EQUIPMENT CONSISTING OF TANK, SPRAY BAR, PUMP WITH DISCHARGE PRESSURE GAUGE;
 - B. ARRANGE SPRAY BAR HEIGHT, NOZZLE SPACING AND SPRAY PATTERN TO PROVIDE COMPLETE COVERAGE OF GROUND WITH WATER;
 - C. DISPERSE WATER THROUGH NOZZLES ON SPRAY BAR AT 20 PSI (137.8 K PA) MINIMUM. KEEP AREAS DAMP WITHOUT CREATING NUISANCE CONDITIONS SUCH AS PONDING.
6. FOR WATER APPLICATION TO SOIL SURFACES DURING DEMOLITION AND/OR EXCAVATION, THE CONTRACTOR SHALL:
 - A. APPLY WATER WITH EQUIPMENT CONSISTING OF A TANK, PUMP WITH DISCHARGE GAUGE, HOSES AND MIST NOZZLES;
 - B. LOCATE TANK AND SPRAYING EQUIPMENT SO THAT THE ENTIRE EXCAVATION AREA CAN BE MISTED WITHOUT INTERFERING WITH DEMOLITION AND/OR EXCAVATION EQUIPMENT OR OPERATIONS. KEEP AREAS DAMP WITHOUT CREATING NUISANCE CONDITIONS SUCH AS PONDING.
 - C. APPLY WATER SPRAY IN A MANNER TO PREVENT MOVEMENT OF SPRAY BEYOND SITE BOUNDARIES.

CONSTRUCTION AND STABILIZATION SEQUENCE:

1. INSTALL SEDIMENT AND EROSION CONTROL MEASURES INCLUDING STABILIZED TREE PROTECTION, AND SILT FENCE AS INDICATED ON SHEET C-103. SEE SHEET C-503 FOR SEDIMENTATION AND EROSION CONTROL DETAILS.
2. SEDIMENT CONTROL MEASURES SHALL BE INSPECTED AND APPROVED BY THE INSPECTOR PRIOR TO COMMENCING ANY OTHER LAND DISTURBING ACTIVITIES.
3. REMOVE ITEMS AS INDICATED ON DEMOLITION PLAN.
4. INSTALL SITE IMPROVEMENTS AS INDICATED ON CONSTRUCTION DOCUMENTS FOR THE PROPOSED BUILDING.
5. AT THE COMPLETION OF CONSTRUCTION AND AFTER THE INSPECTOR'S APPROVAL, ALL TEMPORARY SEDIMENTATION AND EROSION CONTROL MEASURES SHALL BE REMOVED.

SEDIMENTATION EROSION CONTROL NOTE:

THE APPLICANT MUST NOTIFY THE DEPARTMENT OF HEALTH BY PHONE (202-535-2250) AT LEAST 24 HOURS PRIOR TO THE START OF GRADING ACTIVITY AND WITHIN (2) WEEKS AFTER COMPLETION OF PROJECT TO REQUEST INSPECTION. IF THERE IS NEED TO MAKE CHANGES OR MODIFICATIONS IN THE APPROVED DESIGN, DEPARTMENT OF HEALTH MUST BE NOTIFIED IMMEDIATELY.

SCHEDULE AND HOLD PRE-CONSTRUCTION MEETING WITH THE SEDIMENT CONTROL INSPECTOR 48 HOURS PRIOR TO ANY LAND DISTURBING ACTIVITY. CALL 202-535-2977 FOR APPOINTMENT.

NOTE:

1. THE CONTRACTOR SHALL BE RESPONSIBLE FOR DESIGN OF SHEETING AND SHORING AND SUPPORT OF EXISTING UTILITIES AND ADJACENT STRUCTURES. SHORING, BRACING, AND UNDERPINNING DESIGNED BY THE CONTRACTOR'S STRUCTURAL ENGINEER LICENSED IN THE DISTRICT OF COLUMBIA SHALL BE PROVIDED AS NECESSARY TO ENSURE THEIR SUPPORT.
2. PROVIDE SILT FENCE AT PERIMETER OF EXCAVATION AREA TO REMAIN IN PLACE UNTIL BELOW GRADE EXCAVATION HAS BEGUN UNLESS OTHERWISE APPROVED BY THE INSPECTOR.
3. CONTRACTOR TO PROVIDE ON SITE APPROVED STAMPED AND SIGNED SEDIMENTATION AND EROSION CONTROL DRAWINGS BY DEPARTMENT OF ENVIRONMENT, WATERSHED PROTECTION DIVISION.
4. PROVIDE CHAIN LINK FENCE AT PERIMETER OF SITE.

CONSTRUCTION DATES:

- THE PROPOSED DEMOLITION WORK DUE TO COMMENCE FALL 2013 AND IS ANTICIPATED TO TAKE APPROXIMATELY 24 MONTHS.
- EXACT BEGINNING AND END OF CONSTRUCTION IS TO BE ESTABLISHED BY THE OWNER.

TOTAL AREA OF DISTURBANCE:

TOTAL AREA OF DISTURBANCE: 137,914 SQUARE FEET OR 3.1661 AC

TOTAL VOLUME OF CUT OF BELOW GRADE EXCAVATION: (PHASE 1)

TOTAL AREA OF EXCAVATION: 56,647 SF / 1.30 AC
VOLUME OF CUT: 56,647 SQ.FT. (AREA) X 14 FEET (DEPTH)

VOLUME OF CUT: 29,373 cy +/-

TOTAL VOLUME OF CUT OF BELOW GRADE EXCAVATION: (PHASE 2)

TOTAL AREA OF EXCAVATION: 35,614 SF / 0.8176 AC
VOLUME OF CUT: 35,614 SQ.FT. (AREA) X 14 FEET (DEPTH)

VOLUME OF CUT: 18,467 cy +/-

TOTAL VOLUME OF CUT / FILL FOR UTILITIES:

TOTAL AREA OF EXCAVATION: 2,888 SF
VOLUME OF CUT: 2,888 SQ.FT. (AREA) X 7 FEET (DEPTH)

VOLUME OF CUT AND FILL: 749 cy +/-

SEDIMENT CONTROL APPROVAL:

PLAN NUMBER:
THIS APPROVAL IS FOR GRADING AND SEDIMENT CONTROL ONLY. PERMITTEE/ CONTRACTOR IS REQUIRED TO CONSTRUCT DESIGN FEATURE SHOWN HEREON. HE SHALL NOTIFY THIS OFFICE AT NUMBER LISTED BELOW AT LEAST 24 HOURS BEFORE START OF GRADING ACTIVITY, AND WITHIN TWO WEEKS AFTER COMPLETION OF PROJECT FOR FINAL INSPECTION.

DATE _____

EROSION AND SEDIMENT CONTROL BRANCH

FOR FURTHER INFORMATION, PLEASE CALL:
GOVERNMENT OF THE DISTRICT OF COLUMBIA
DISTRICT DEPARTMENT OF ENVIRONMENT
WATERSHED PROTECTION DIVISION

1200 1ST-STREET, NE
WASHINGTON, D.C.
TEL NO. (202) 535-2240
FAX NO. (202) 535-1364

LEGEND

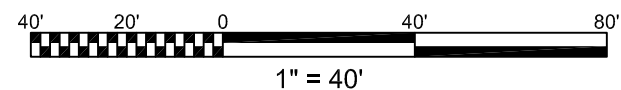
LEGEND	PROPOSED
TEMP CONSTRUCTION ENTRANCE	
WASH RACK	
SILT FENCE	
INLET PROTECTION	
APPROXIMATE LIMIT OF BELOW GRADE EXCAVATION	
APPROXIMATE LIMIT OF DISTURBANCE	
SEDIMENT TANK	
SUMP PUMP	
TREE PROTECTION	
STRAW BALE DIKE	

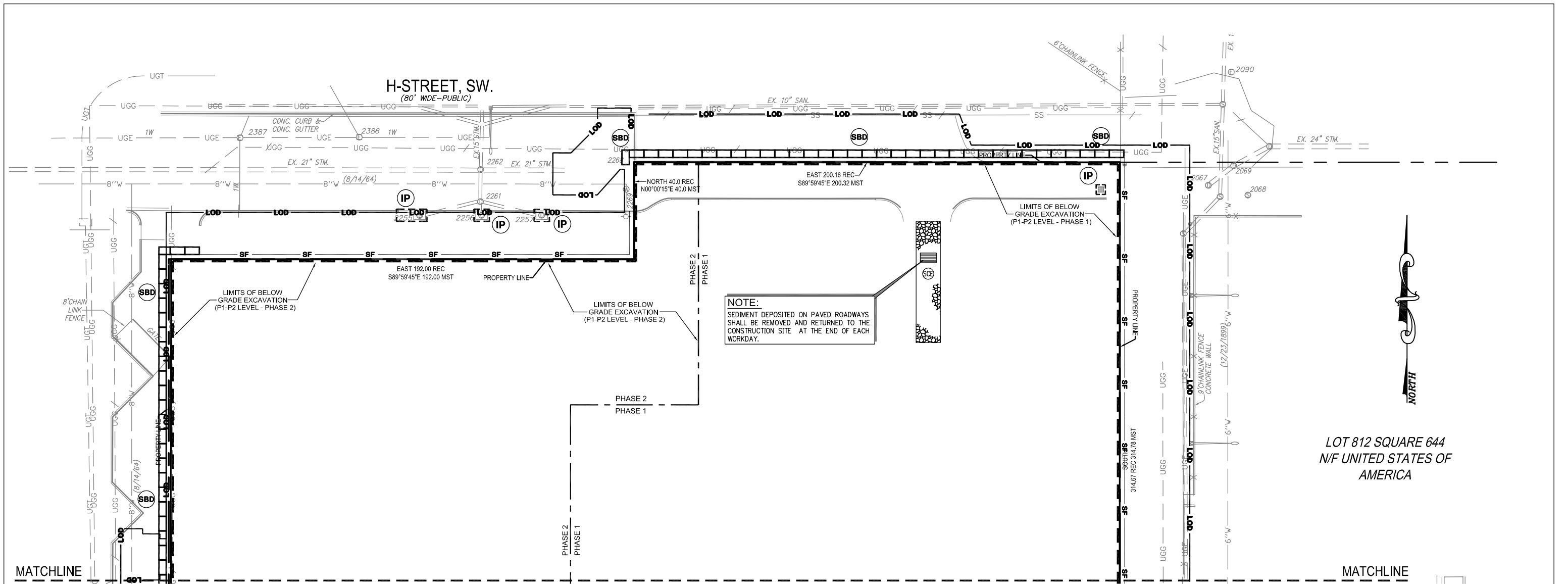
1" = 40'

TITLE: EROSION AND SEDIMENTATION CONTROL PLAN SOUTH

NUMBER: C-03

THIS SHEET IS TO BE USED FOR SEDIMENTATION AND EROSION CONTROL PURPOSES ONLY !!





NOTE:
 SEDIMENT DEPOSITED ON PAVED ROADWAYS SHALL BE REMOVED AND RETURNED TO THE CONSTRUCTION SITE AT THE END OF EACH WORKDAY.

LOT 812 SQUARE 644
 N/F UNITED STATES OF AMERICA

DUST CONTROL NOTES:

1. THE CONTRACTOR SHALL CONDUCT OPERATIONS AND MAINTAIN THE PROJECT SITE AS TO MINIMIZE THE CREATION AND DISPERSION OF DUST. DUST CONTROL SHALL BE USED THROUGHOUT THE WORK AT THE SITE.
2. THE CONTRACTOR MUST PROVIDE CLEAN WATER, FREE FROM SALT, OIL AND OTHER DELETERIOUS MATERIAL TO BE USED FOR ON-SITE DUST CONTROL.
3. THE CONTRACTOR SHALL SUPPLY WATER SPRAYING EQUIPMENT CAPABLE OF ACCESSING ALL WORK AREAS.
4. THE CONTRACTOR SHALL IMPLEMENT STRICT DUST CONTROL MEASURES DURING ACTIVE CONSTRUCTION PERIODS ON-SITE. THESE CONTROL MEASURES WILL GENERALLY CONSIST OF WATER APPLICATIONS THAT SHALL BE APPLIED A MINIMUM OF ONCE PER DAY DURING DRY WEATHER OR MORE OFTEN AS REQUIRED TO PREVENT DUST EMISSIONS.
5. FOR WATER APPLICATION TO UNDISTURBED SOIL SURFACES, THE CONTRACTOR SHALL:
 - A. APPLY WATER WITH EQUIPMENT CONSISTING OF TANK, SPRAY BAR, PUMP WITH DISCHARGE PRESSURE GAUGE;
 - B. ARRANGE SPRAY BAR HEIGHT, NOZZLE SPACING AND SPRAY PATTERN TO PROVIDE COMPLETE COVERAGE OF GROUND WITH WATER;
 - C. DISPERSE WATER THROUGH NOZZLES ON SPRAY BAR AT 20 PSI (137.8 K PA) MINIMUM. KEEP AREAS DAMP WITHOUT CREATING NUISANCE CONDITIONS SUCH AS PONDING.
6. FOR WATER APPLICATION TO SOIL SURFACES DURING DEMOLITION AND/OR EXCAVATION, THE CONTRACTOR SHALL:
 - A. APPLY WATER WITH EQUIPMENT CONSISTING OF A TANK, PUMP WITH DISCHARGE GAUGE, HOSES AND MIST NOZZLES;
 - B. LOCATE TANK AND SPRAYING EQUIPMENT SO THAT THE ENTIRE EXCAVATION AREA CAN BE MISTED WITHOUT INTERFERING WITH DEMOLITION AND/OR EXCAVATION EQUIPMENT OR OPERATIONS. KEEP AREAS DAMP WITHOUT CREATING NUISANCE CONDITIONS SUCH AS PONDING.
 - C. APPLY WATER SPRAY IN A MANNER TO PREVENT MOVEMENT OF SPRAY BEYOND SITE BOUNDARIES.

CONSTRUCTION AND STABILIZATION SEQUENCE:

1. INSTALL SEDIMENT AND EROSION CONTROL MEASURES INCLUDING STABILIZED TREE PROTECTION, AND SILT FENCE AS INDICATED ON SHEET C-103. SEE SHEET C-503 FOR SEDIMENTATION AND EROSION CONTROL DETAILS.
2. SEDIMENT CONTROL MEASURES SHALL BE INSPECTED AND APPROVED BY THE INSPECTOR PRIOR TO COMMENCING ANY OTHER LAND DISTURBING ACTIVITIES.
3. REMOVE ITEMS AS INDICATED ON DEMOLITION PLAN.
4. INSTALL SITE IMPROVEMENTS AS INDICATED ON CONSTRUCTION DOCUMENTS FOR THE PROPOSED BUILDING.
5. AT THE COMPLETION OF CONSTRUCTION AND AFTER THE INSPECTOR'S APPROVAL, ALL TEMPORARY SEDIMENTATION AND EROSION CONTROL MEASURES SHALL BE REMOVED.

SEDIMENTATION EROSION CONTROL NOTE:

THE APPLICANT MUST NOTIFY THE DEPARTMENT OF HEALTH BY PHONE (202-535-2250) AT LEAST 24 HOURS PRIOR TO THE START OF GRADING ACTIVITY AND WITHIN (2) WEEKS AFTER COMPLETION OF PROJECT TO REQUEST INSPECTION. IF THERE IS NEED TO MAKE CHANGES OR MODIFICATIONS IN THE APPROVED DESIGN, DEPARTMENT OF HEALTH MUST BE NOTIFIED IMMEDIATELY.

SCHEDULE AND HOLD PRE-CONSTRUCTION MEETING WITH THE SEDIMENT CONTROL INSPECTOR 48 HOURS PRIOR TO ANY LAND DISTURBING ACTIVITY. CALL 202-535-2977 FOR APPOINTMENT.

NOTE:

1. THE CONTRACTOR SHALL BE RESPONSIBLE FOR DESIGN OF SHEETING AND SHORING AND SUPPORT OF EXISTING UTILITIES AND ADJACENT STRUCTURES. SHORING, BRACING, AND UNDERPINNING DESIGNED BY THE CONTRACTOR'S STRUCTURAL ENGINEER LICENSED IN THE DISTRICT OF COLUMBIA SHALL BE PROVIDED AS NECESSARY TO ENSURE THEIR SUPPORT.
2. PROVIDE SILT FENCE AT PERIMETER OF EXCAVATION AREA TO REMAIN IN PLACE UNTIL BELOW GRADE EXCAVATION HAS BEGUN UNLESS OTHERWISE APPROVED BY THE INSPECTOR.
3. CONTRACTOR TO PROVIDE ON SITE APPROVED STAMPED AND SIGNED SEDIMENTATION AND EROSION CONTROL DRAWINGS BY DEPARTMENT OF ENVIRONMENT, WATERSHED PROTECTION DIVISION.
4. PROVIDE CHAIN LINK FENCE AT PERIMETER OF SITE.

CONSTRUCTION DATES:

- THE PROPOSED DEMOLITION WORK DUE TO COMMENCE FALL 2013 AND IS ANTICIPATED TO TAKE APPROXIMATELY 24 MONTHS.
- EXACT BEGINNING AND END OF CONSTRUCTION IS TO BE ESTABLISHED BY THE OWNER.

TOTAL AREA OF DISTURBANCE:

TOTAL AREA OF DISTURBANCE: 137,914 SQUARE FEET OR 3.1661 AC

TOTAL VOLUME OF CUT OF BELOW GRADE EXCAVATION:

(PHASE 1)
 TOTAL AREA OF EXCAVATION: 56,647 SF / 1.30 AC
 VOLUME OF CUT: 56,647 SQ.FT. (AREA) X 14 FEET (DEPTH)
 27
 VOLUME OF CUT: 29,373 cy +/-

TOTAL VOLUME OF CUT OF BELOW GRADE EXCAVATION:

(PHASE 2)
 TOTAL AREA OF EXCAVATION: 35,614 SF / 0.8176 AC
 VOLUME OF CUT: 35,614 SQ.FT. (AREA) X 14 FEET (DEPTH)
 27
 VOLUME OF CUT: 18,467 cy +/-

TOTAL VOLUME OF CUT / FILL FOR UTILITIES:

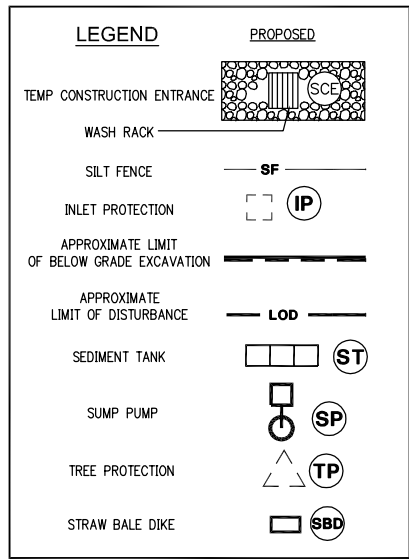
TOTAL AREA OF EXCAVATION: 2,888 SF
 VOLUME OF CUT: 2,888 SQ.FT. (AREA) X 7 FEET (DEPTH)
 27
 VOLUME OF CUT AND FILL: 749 cy +/-

SEDIMENT CONTROL APPROVAL:

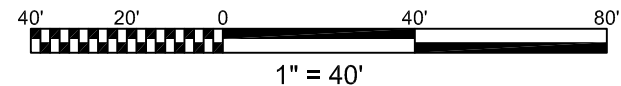
PLAN NUMBER:
 THIS APPROVAL IS FOR GRADING AND SEDIMENT CONTROL ONLY. PERMITTEE/ CONTRACTOR IS REQUIRED TO CONSTRUCT DESIGN FEATURE SHOWN HEREON. HE SHALL NOTIFY THIS OFFICE AT NUMBER LISTED BELOW AT LEAST 24 HOURS BEFORE START OF GRADING ACTIVITY, AND WITHIN TWO WEEKS AFTER COMPLETION OF PROJECT FOR FINAL INSPECTION.

DATE _____ EROSION AND SEDIMENT CONTROL BRANCH

FOR FURTHER INFORMATION, PLEASE CALL:
 GOVERNMENT OF THE DISTRICT OF COLUMBIA
 DISTRICT DEPARTMENT OF ENVIRONMENT
 WATERSHED PROTECTION DIVISION
 1200 1ST-STREET, NE
 WASHINGTON, D.C.
 TEL. NO. (202) 535-2240
 FAX NO. (202) 535-1364



THIS SHEET IS TO BE USED FOR SEDIMENTATION AND EROSION CONTROL PURPOSES ONLY !!



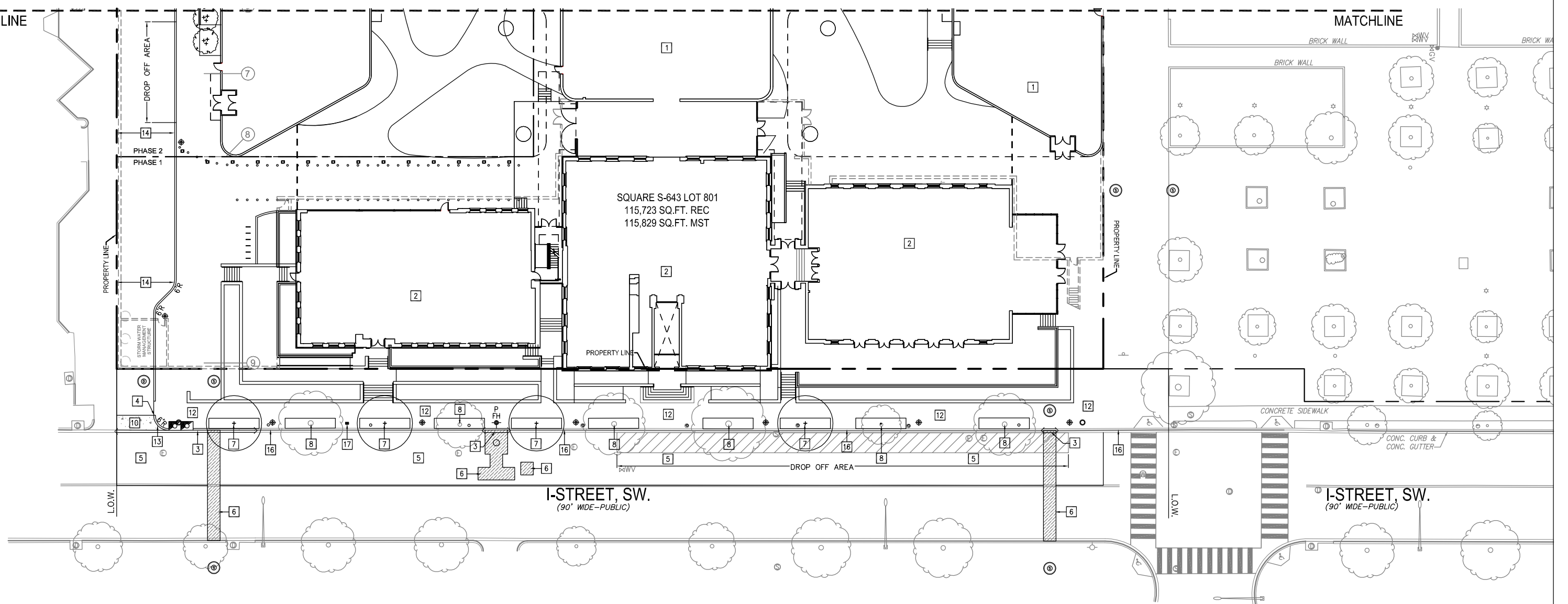
1" = 40'

TITLE: EROSION AND SEDIMENTATION CONTROL PLAN NORTH

NUMBER: C-04

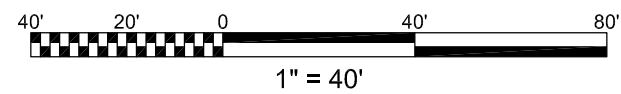
MATCHLINE

MATCHLINE



SITE KEYNOTES:

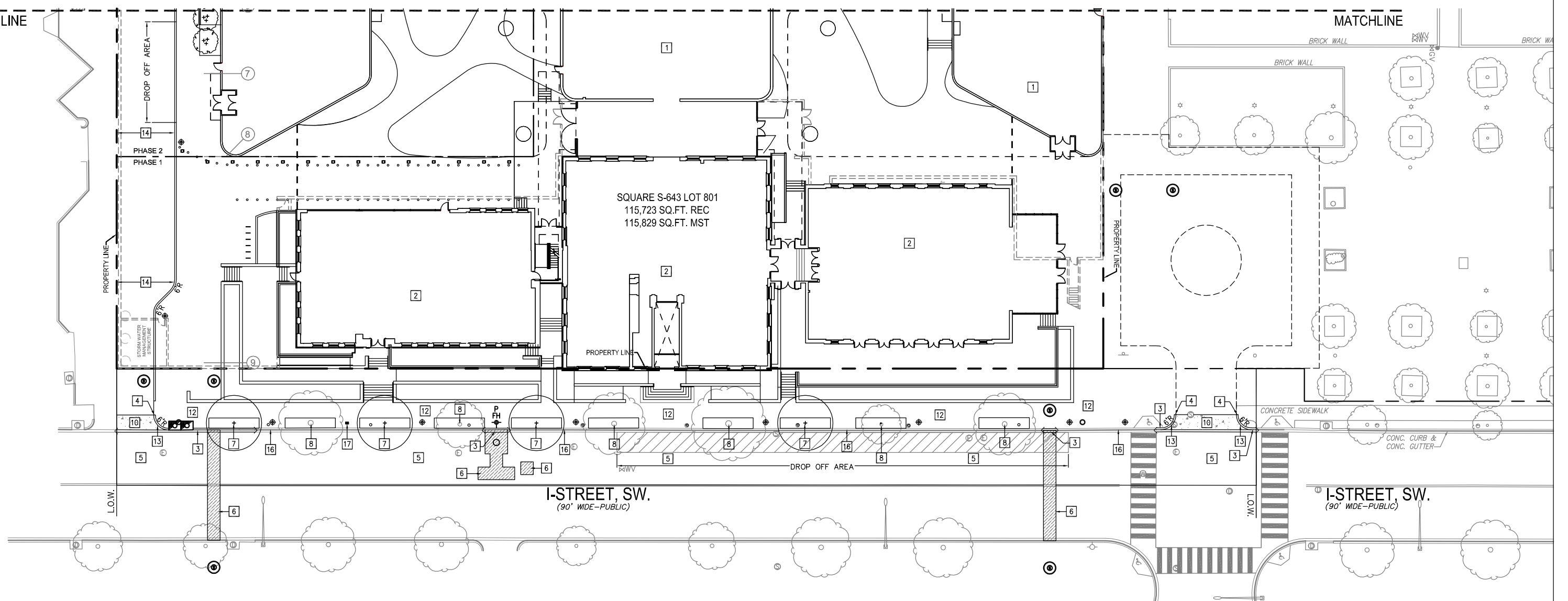
- 1 NEW BUILDING. REFER TO ARCHITECTURAL DRAWING FOR DETAILS.
- 2 EXISTING BUILDING AND FACADE TO BE RENOVATED. REFER TO ARCHITECTURAL DRAWING FOR DETAILS.
- 3 NEW CONCRETE CURB AND CONCRETE GUTTER PER DC/DDOT STANDARDS AND SPECIFICATIONS. SEE SHEET C-502 FOR DETAILS.
- 4 NEW CONCRETE CURB PER DC/DDOT STANDARDS AND SPECIFICATIONS. SEE SHEET C-502 FOR DETAILS.
- 5 NEW ASPHALT SURFACE COURSE TO CENTERLINE OF ROAD, FRONTING CONSTRUCTION PER DC/DDOT STANDARDS AND SPECIFICATIONS. SEE SHEET C-502 FOR DETAILS.
- 6 NEW ASPHALT PAVEMENT WITH CONCRETE BASE PER DC/DDOT STANDARDS AND SPECIFICATIONS. SEE SHEET C-502 FOR DETAILS.
- 7 NEW STREET TREE. REFER TO LANDSCAPE DRAWINGS FOR SPECIES AND DETAILS.
- 8 EXISTING STREET TREE TO REMAIN.
- 9 NEW ORNAMENTAL TREE. REFER TO LANDSCAPE DRAWING FOR SPECIES AND DETAILS.
- 10 NEW CONCRETE APRON PER DC/DDOT STANDARDS AND SPECIFICATIONS.
- 11 NEW CONCRETE DRIVEWAY ENTRANCE WITH 10'-0" RADIUS PER DC/DDOT STANDARDS AND SPECIFICATIONS. SEE SHEET C-502 FOR DETAILS.
- 12 NEW CONCRETE SIDEWALK. REFER TO LANDSCAPE DRAWING FOR DETAILS.
- 13 NEW CONCRETE DRIVEWAY ENTRANCE WITH 6'-0" RADIUS PER DC/DDOT STANDARDS AND SPECIFICATIONS. SEE SHEET C-502 FOR DETAILS.
- 14 NEW ASPHALT SURFACE COURSE TO MATCH EXISTING ASPHALT PER DDOT STANDARDS AND SPECIFICATIONS.
- 15 NEW ASPHALT PAVEMENT WITH CONCRETE BASE ABOVE PROPOSED STRUCTURE PER DC/DDOT STANDARDS AND SPECIFICATIONS. SEE SHEET C-502 FOR DETAILS.
- 16 EXISTING CURB AND GUTTER TO REMAIN.
- 17 NEW MULTI-SPACE PARKING METER PER DC/DDOT STANDARDS AND SPECIFICATIONS.



1" = 40'
TITLE: SITE PLAN SOUTH
NUMBER: C-05

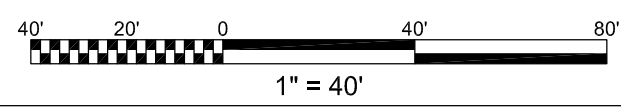
MATCHLINE

MATCHLINE



SITE KEYNOTES:

- 1 NEW BUILDING. REFER TO ARCHITECTURAL DRAWING FOR DETAILS.
- 2 EXISTING BUILDING AND FACADE TO BE RENOVATED. REFER TO ARCHITECTURAL DRAWING FOR DETAILS.
- 3 NEW CONCRETE CURB AND CONCRETE GUTTER PER DC/DDOT STANDARDS AND SPECIFICATIONS. SEE SHEET C-502 FOR DETAILS.
- 4 NEW CONCRETE CURB PER DC/DDOT STANDARDS AND SPECIFICATIONS. SEE SHEET C-502 FOR DETAILS.
- 5 NEW ASPHALT SURFACE COURSE TO CENTERLINE OF ROAD, FRONTING CONSTRUCTION PER DC/DDOT STANDARDS AND SPECIFICATIONS. SEE SHEET C-502 FOR DETAILS.
- 6 NEW ASPHALT PAVEMENT WITH CONCRETE BASE PER DC/DDOT STANDARDS AND SPECIFICATIONS. SEE SHEET C-502 FOR DETAILS.
- 7 NEW STREET TREE. REFER TO LANDSCAPE DRAWINGS FOR SPECIES AND DETAILS.
- 8 EXISTING STREET TREE TO REMAIN.
- 9 NEW ORNAMENTAL TREE. REFER TO LANDSCAPE DRAWING FOR SPECIES AND DETAILS.
- 10 NEW CONCRETE APRON PER DC/DDOT STANDARDS AND SPECIFICATIONS.
- 11 NEW CONCRETE DRIVEWAY ENTRANCE WITH 10'-0" RADIUS PER DC/DDOT STANDARDS AND SPECIFICATIONS. SEE SHEET C-502 FOR DETAILS.
- 12 NEW CONCRETE SIDEWALK. REFER TO LANDSCAPE DRAWING FOR DETAILS.
- 13 NEW CONCRETE DRIVEWAY ENTRANCE WITH 6'-0" RADIUS PER DC/DDOT STANDARDS AND SPECIFICATIONS. SEE SHEET C-502 FOR DETAILS.
- 14 NEW ASPHALT SURFACE COURSE TO MATCH EXISTING ASPHALT PER DDOT STANDARDS AND SPECIFICATIONS.
- 15 NEW ASPHALT PAVEMENT WITH CONCRETE BASE ABOVE PROPOSED STRUCTURE PER DC/DDOT STANDARDS AND SPECIFICATIONS. SEE SHEET C-502 FOR DETAILS.
- 16 EXISTING CURB AND GUTTER TO REMAIN.
- 17 NEW MULTI-SPACE PARKING METER PER DC/DDOT STANDARDS AND SPECIFICATIONS.



1" = 40'
TITLE: SITE PLAN SOUTH (ALTERNATE)
NUMBER: C-05A

H-STREET, SW.
(80' WIDE--PUBLIC)

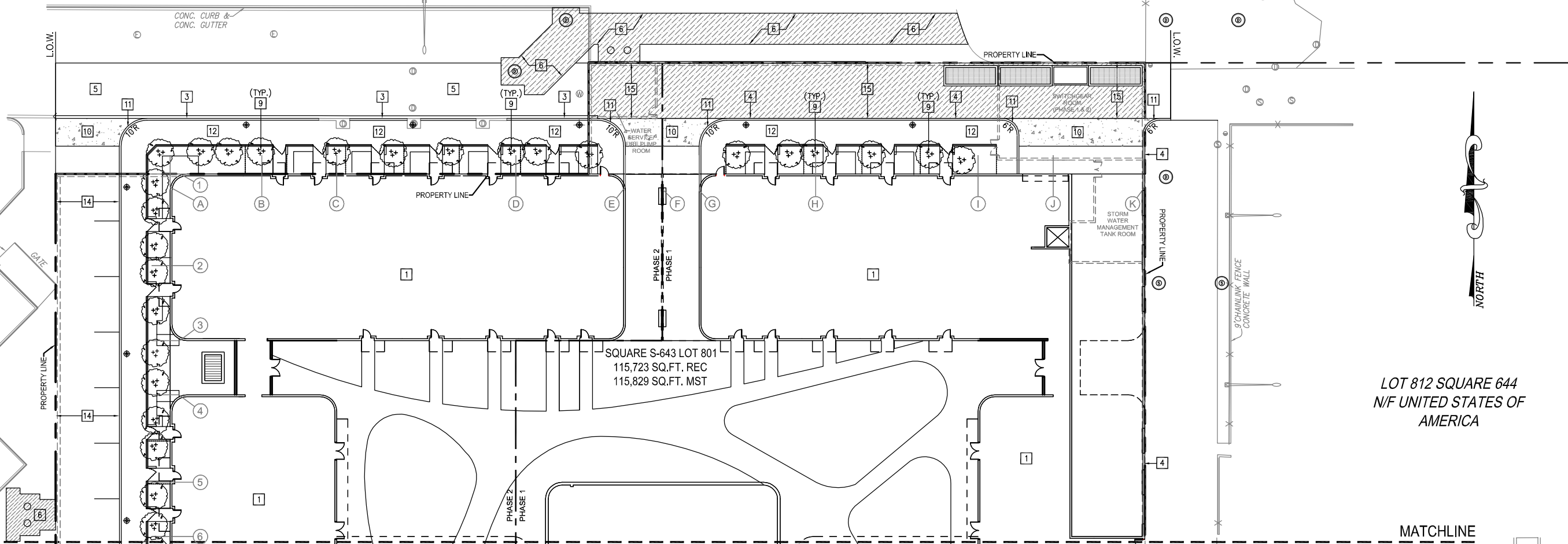
CONC. CURB &
CONC. GUTTER

6' CHAINLINK FENCE

L.O.W.

L.O.W.

8' CHAIN
LINK
FENCE



LOT 812 SQUARE 644
N/F UNITED STATES OF
AMERICA

MATCHLINE

MATCHLINE

SQUARE S-643 LOT 801
115,723 SQ.FT. REC
115,829 SQ.FT. MST

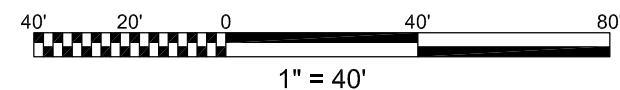
SITE KEYNOTES:

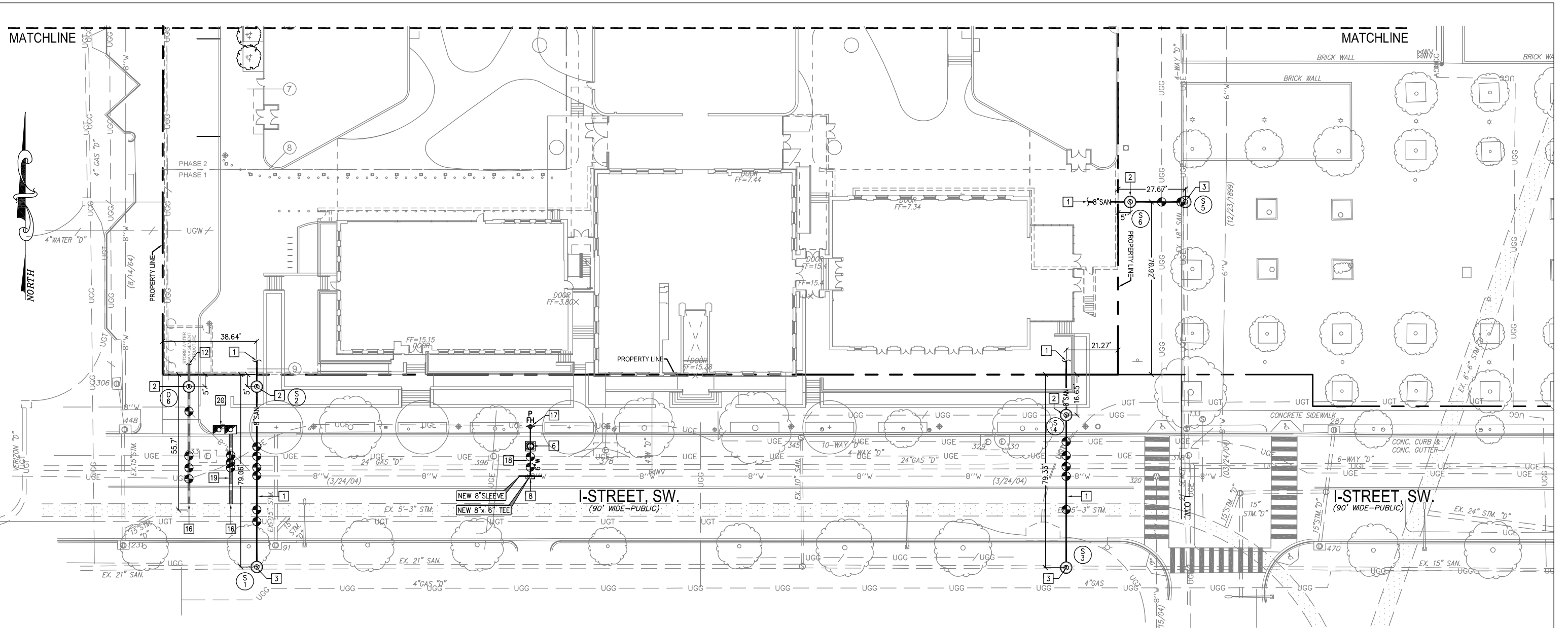
- 1 NEW BUILDING. REFER TO ARCHITECTURAL DRAWING FOR DETAILS.
- 2 EXISTING BUILDING AND FACADE TO BE RENOVATED. REFER TO ARCHITECTURAL DRAWING FOR DETAILS.
- 3 NEW CONCRETE CURB AND CONCRETE GUTTER PER DC/DDOT STANDARDS AND SPECIFICATIONS. SEE SHEET C-502 FOR DETAILS.
- 4 NEW CONCRETE CURB PER DC/DDOT STANDARDS AND SPECIFICATIONS. SEE SHEET C-502 FOR DETAILS.
- 5 NEW ASPHALT SURFACE COURSE TO CENTERLINE OF ROAD, FRONTING CONSTRUCTION PER DC/DDOT STANDARDS AND SPECIFICATIONS. SEE SHEET C-502 FOR DETAILS.
- 6 NEW ASPHALT PAVEMENT WITH CONCRETE BASE PER DC/DDOT STANDARDS AND SPECIFICATIONS. SEE SHEET C-502 FOR DETAILS.
- 7 NEW STREET TREE. REFER TO LANDSCAPE DRAWINGS FOR SPECIES AND DETAILS.
- 8 EXISTING STREET TREE TO REMAIN.
- 9 NEW ORNAMENTAL TREE. REFER TO LANDSCAPE DRAWING FOR SPECIES AND DETAILS.
- 10 NEW CONCRETE APRON PER DC/DDOT STANDARDS AND SPECIFICATIONS.
- 11 NEW CONCRETE DRIVEWAY ENTRANCE WITH 10'-0" RADIUS PER DC/DDOT STANDARDS AND SPECIFICATIONS. SEE SHEET C-502 FOR DETAILS.
- 12 NEW CONCRETE SIDEWALK. REFER TO LANDSCAPE DRAWING FOR DETAILS.
- 13 NEW CONCRETE DRIVEWAY ENTRANCE WITH 6'-0" RADIUS PER DC/DDOT STANDARDS AND SPECIFICATIONS. SEE SHEET C-502 FOR DETAILS.
- 14 NEW ASPHALT SURFACE COURSE TO MATCH EXISTING ASPHALT PER DDOT STANDARDS AND SPECIFICATIONS.

1" = 40'

TITLE:
SITE PLAN
NORTH

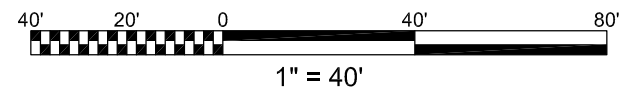
NUMBER:
C-06



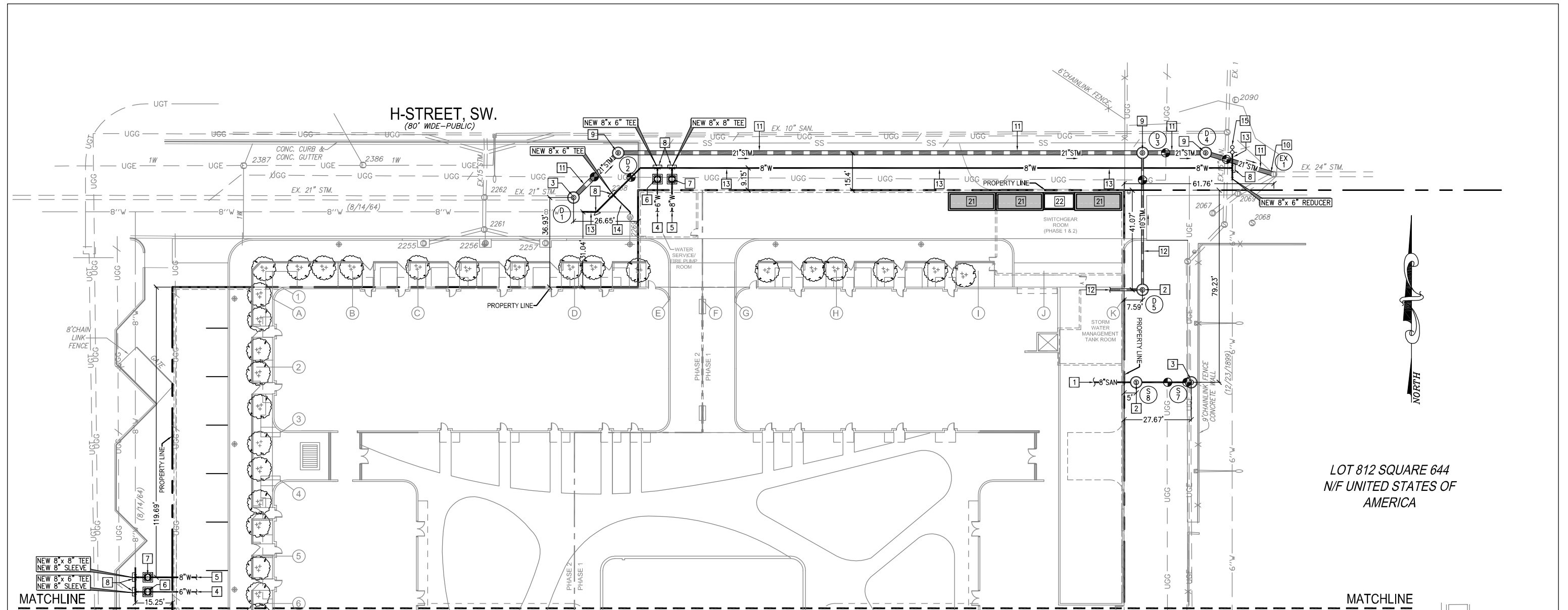


UTILITY KEYNOTES:

- | | |
|---|--|
| <p>1 NEW 8" PVC SCH-40 SANITARY SEWER LATERAL.</p> <p>2 NEW 4.0' DIAMETER CLEANOUT MANHOLE PER DC/WATER STANDARDS AND SPECIFICATIONS. REFER TO DC/WATER STANDARD DETAIL S-20.01.</p> <p>3 NEW 4.0' DIAMETER MANHOLE WITH DOGHOUSE BASE PER DC/WATER STANDARDS AND SPECIFICATIONS. REFER TO DC/WATER STANDARD DRAWING S-20.11.</p> <p>4 NEW 6" DIP CLASS 52 DOMESTIC WATER SERVICE LATERAL. BACKFLOW PREVENTER ASSEMBLY TO MEET ASSE-1015. WATER METER TO BE LOCATED INSIDE THE BUILDING.</p> <p>5 NEW 8" DIP CLASS 52 FIRE SERVICE LATERAL. BACKFLOW PREVENTER ASSEMBLY TO MEET ASSE-1048.</p> <p>6 NEW 6" WATER VALVE WITH 4.0' CASING PER DC/WATER STANDARDS AND SPECIFICATIONS. REFER TO DC/WATER STANDARD DRAWING W-20.01.</p> <p>7 NEW 8" WATER VALVE WITH 4.0' CASING PER DC/WATER STANDARDS AND SPECIFICATIONS. REFER TO DC/WATER STANDARD DRAWING W-20.01.</p> <p>8 NEW CONCRETE THRUST BLOCK PER DC/WATER STANDARDS AND SPECIFICATIONS. REFER TO DC/WATER STANDARD DRAWING W-40.01.</p> <p>9 NEW 4.0' DIAMETER MANHOLE PER DC/WATER STANDARDS AND SPECIFICATIONS. REFER TO DC/WATER STANDARD DETAIL S-20.01.</p> <p>10 NEW CONNECTION TO EXISTING MANHOLE PER DC/WATER STANDARDS AND SPECIFICATIONS.</p> | <p>11 NEW RCP 21" STORM SEWER LATERAL.</p> <p>12 NEW PVC SCH-40 10" STORM SEWER LATERAL.</p> <p>13 NEW 8" DIP CLASS 52 WATER LATERAL.</p> <p>14 NEW 6" DIP CLASS 52 FOR FIRE HYDRANT.</p> <p>15 NEW 8" BLOW OFF VALVE.</p> <p>16 NEW ZEE STRAP CONNECTION TO EXISTING COMBINED SEWER MAIN PER DC/WATER STANDARDS AND SPECIFICATIONS. REFER TO DC/WASA OFFICE MANUAL DRAWINGS 35.61-7</p> <p>17 NEW FIRE HYDRANT. REFER TO DC/WATER STANDARD DRAWING W-50.01.</p> <p>18 NEW 6" DIP CLASS 52 FOR FIRE HYDRANT.</p> <p>19 NEW DOUBLE CATCH BASIN PER DC/WATER STANDARDS AND SPECIFICATIONS. REFER TO DC/WATER STANDARD DRAWING S-30.03.</p> <p>20 NEW 15" ROPRS STORM SEWER.</p> <p>21 NEW 6'x18' FULLY GRATED PEPCO TRANSFORMER VAULT. REFER TO DRY UTILITY COMPANY FOR DETAILS.</p> <p>22 NEW 6'x12' PEPCO BUS VAULT. REFER TO DRY UTILITY COMPANY FOR DETAILS.</p> |
|---|--|



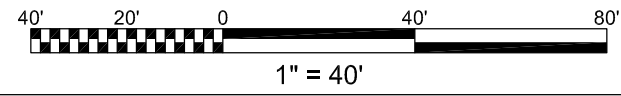
1" = 40'
TITLE: UTILITY PLAN SOUTH
NUMBER: C-07



LOT 812 SQUARE 644
N/F UNITED STATES OF
AMERICA

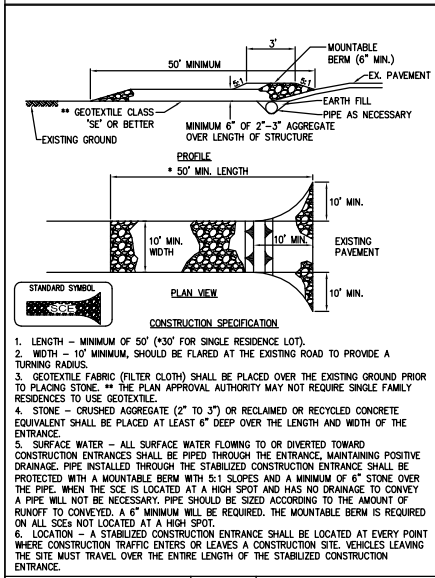
UTILITY KEYNOTES:

- 1 NEW 8" PVC SCH-40 SANITARY SEWER LATERAL.
- 2 NEW 4.0' DIAMETER CLEANOUT MANHOLE PER DC/WATER STANDARDS AND SPECIFICATIONS. REFER TO DC/WATER STANDARD DETAIL S-20.01.
- 3 NEW 4.0' DIAMETER MANHOLE WITH DOGHOUSE BASE PER DC/WATER STANDARDS AND SPECIFICATIONS. REFER TO DC/WATER STANDARD DRAWING S-20.11.
- 4 NEW 6" DIP CLASS 52 DOMESTIC WATER SERVICE LATERAL. BACKFLOW PREVENTER ASSEMBLY TO MEET ASSE-1048.
- 5 NEW 8" DIP CLASS 52 FIRE SERVICE LATERAL. BACKFLOW PREVENTER ASSEMBLY TO MEET ASSE-1048.
- 6 NEW 6" WATER VALVE WITH 4.0' CASING PER DC/WATER STANDARDS AND SPECIFICATIONS. REFER TO DC/WATER STANDARD DRAWING W-20.01.
- 7 NEW 8" WATER VALVE WITH 4.0' CASING PER DC/WATER STANDARDS AND SPECIFICATIONS. REFER TO DC/WATER STANDARD DRAWING W-20.01.
- 8 NEW CONCRETE THRUST BLOCK PER DC/WATER STANDARDS AND SPECIFICATIONS. REFER TO DC/WATER STANDARD DRAWING W-40.01.
- 9 NEW 4.0' DIAMETER MANHOLE PER DC/WATER STANDARDS AND SPECIFICATIONS. REFER TO DC/WATER STANDARD DETAIL S-20.01.
- 10 NEW CONNECTION TO EXISTING MANHOLE PER DC/WATER STANDARDS AND SPECIFICATIONS.
- 11 NEW RCP 21" STORM SEWER LATERAL.
- 12 NEW PVC SCH-40 10" STORM SEWER LATERAL.
- 13 NEW 8" DIP CLASS 52 WATER LATERAL.
- 14 NEW 6" DIP CLASS 52 FOR FIRE HYDRANT.
- 15 NEW 8" BLOW OFF VALVE.
- 16 NEW ZEE STRAP CONNECTION TO EXISTING COMBINED SEWER MAIN PER DC/WATER STANDARDS AND SPECIFICATIONS. REFER TO DC/WASA OFFICE MANUAL DRAWINGS 35.61-7
- 17 NEW FIRE HYDRANT. REFER TO DC/WATER STANDARD DRAWING W-50.01.
- 18 NEW 6" DIP CLASS 52 FOR FIRE HYDRANT.
- 19 NEW DOUBLE CATCH BASIN PER DC/WATER STANDARDS AND SPECIFICATIONS. REFER TO DC/WATER STANDARD DRAWING S-30.03.
- 20 NEW 15" RCP RS STORM SEWER.
- 21 NEW 6'x18' FULLY GRATED PEPCO TRANSFORMER VAULT. REFER TO DRY UTILITY COMPANY FOR DETAILS.
- 22 NEW 6'x12' PEPCO BUS VAULT. REFER TO DRY UTILITY COMPANY FOR DETAILS.

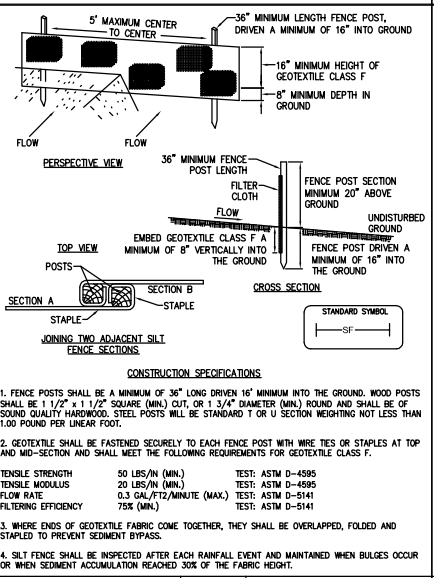


1" = 40'
TITLE: UTILITY PLAN NORTH
NUMBER: C-08

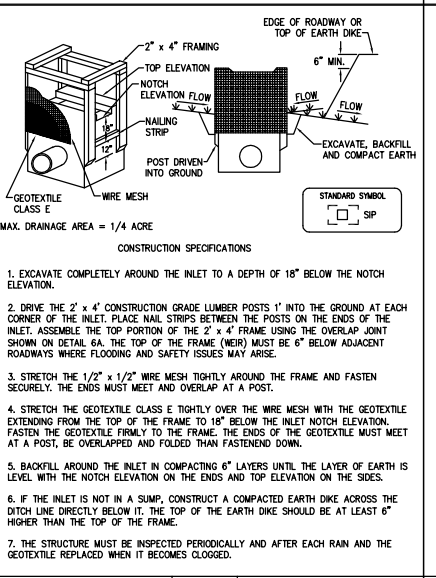
DETAIL 1 - STABILIZED CONSTRUCTION ENTRANCE



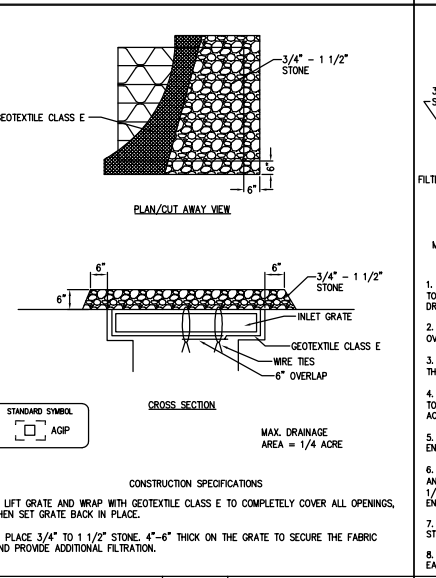
DETAIL 4 - SILT FENCE



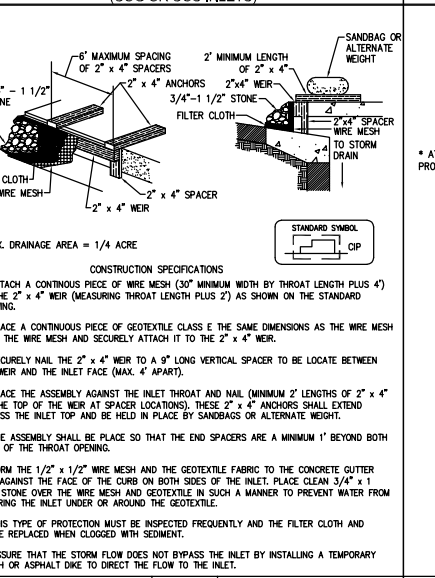
DETAIL 6A - STANDARD INLET PROTECTION



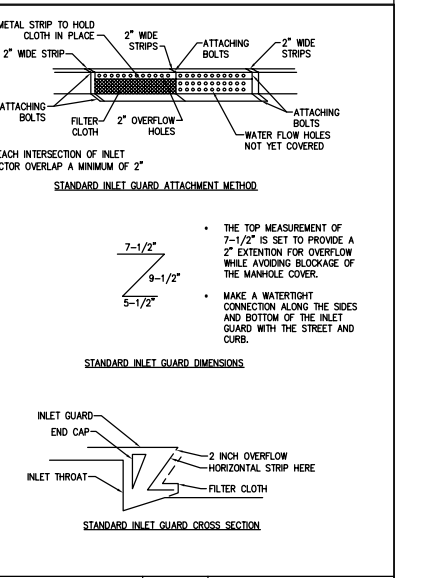
DETAIL 6B - AT GRADE INLET PROTECTION



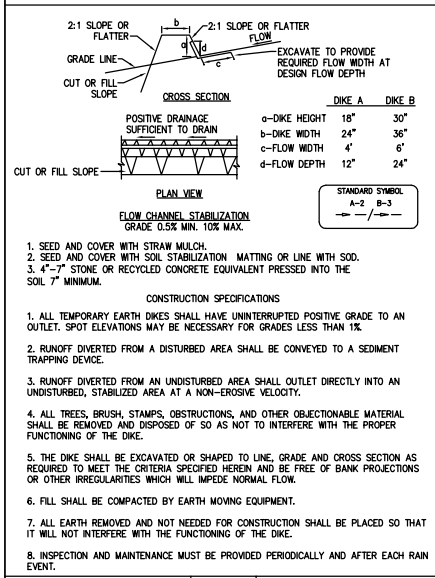
DETAIL 6C - CURB INLET PROTECTION (COG OR COS INLETS)



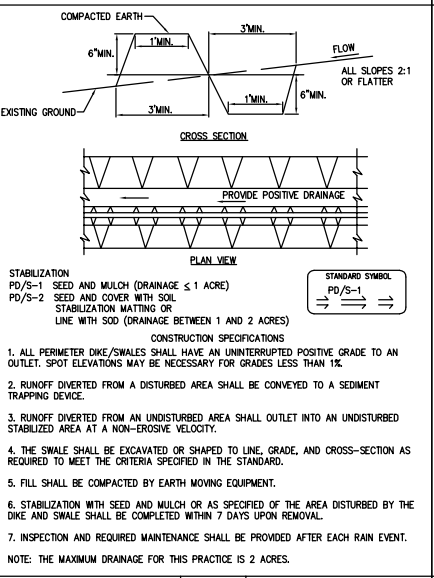
DETAIL 6E - AT GRADE INLET GUARD



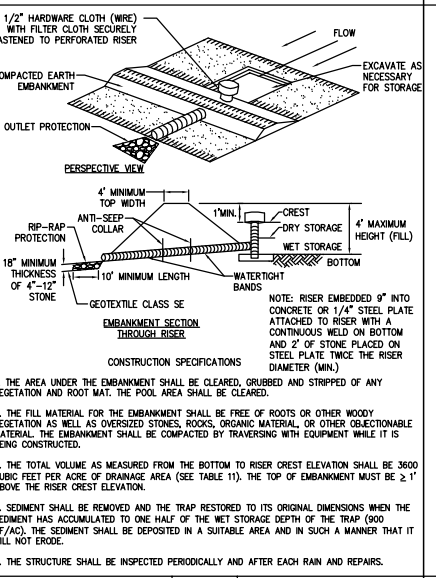
DETAIL 9 - EARTH DIKE



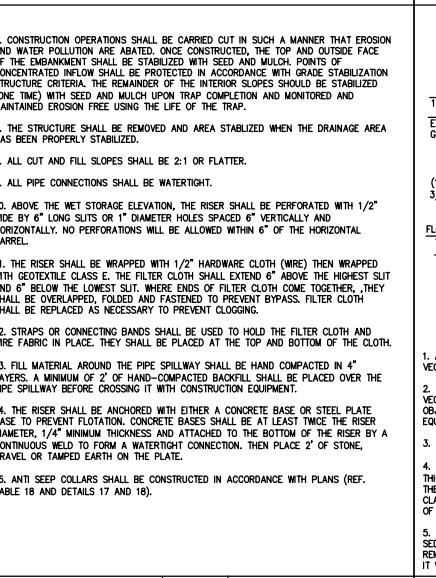
DETAIL 11 - PERIMETER DIKE / SWALE



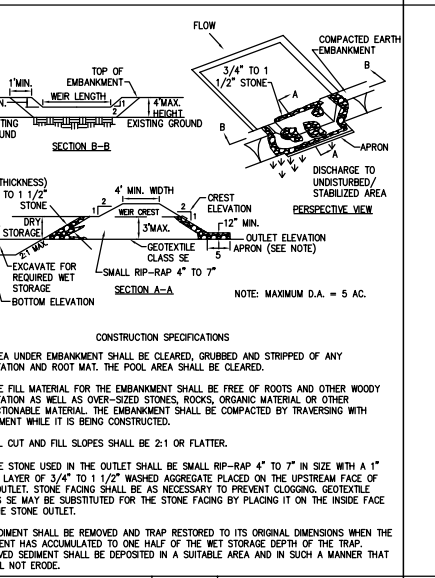
DETAIL 12 - PIPE OUTLET SEDIMENT TRAP - ST I



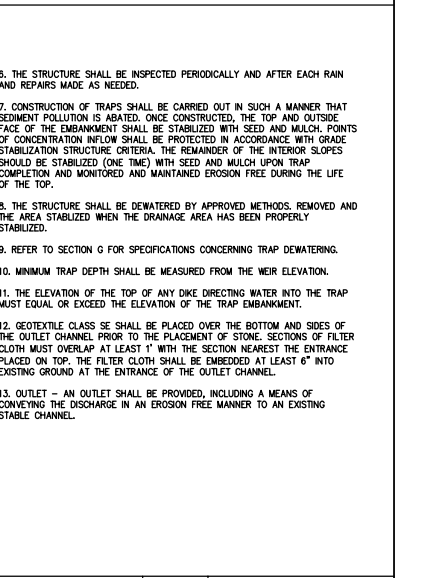
PIPE OUTLET SEDIMENT TRAP - ST II



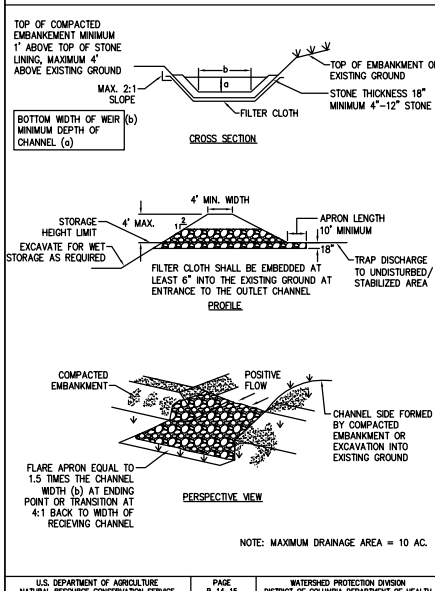
DETAIL 13 - STONE OUTLET SEDIMENT TRAP - ST II



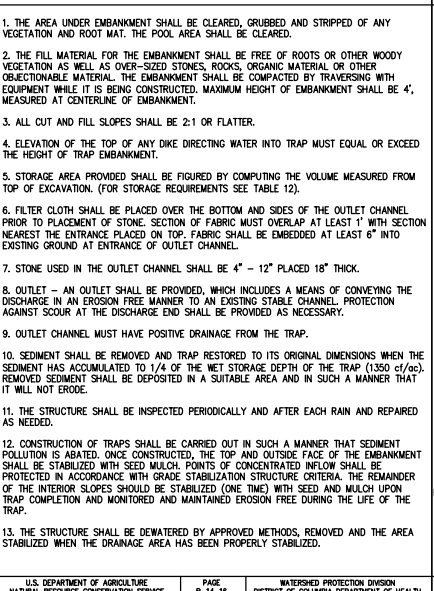
STONE OUTLET SEDIMENT TRAP - ST II



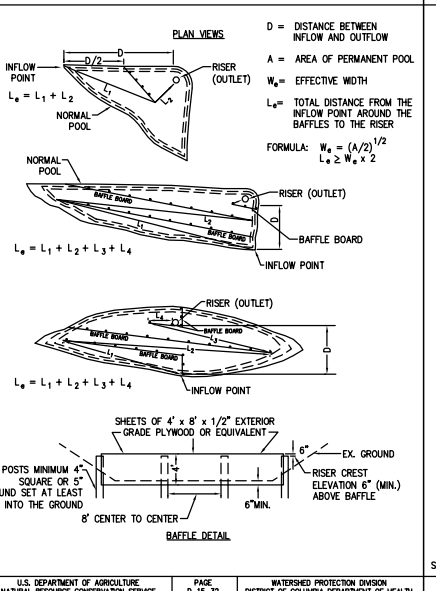
DETAIL 14 - RIP-RAP OUTLET SEDIMENT TRAP - ST III



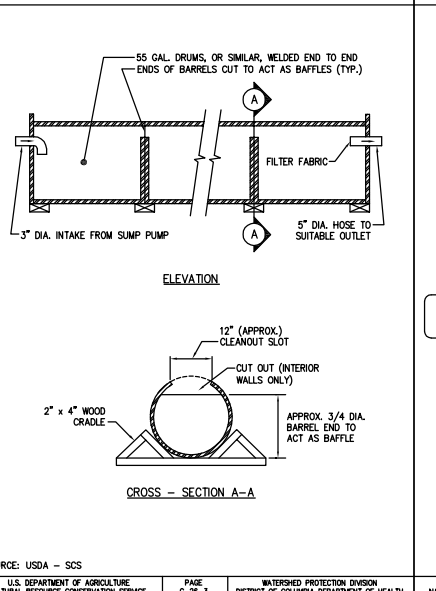
RIP-RAP OUTLET SEDIMENT TRAP - ST III



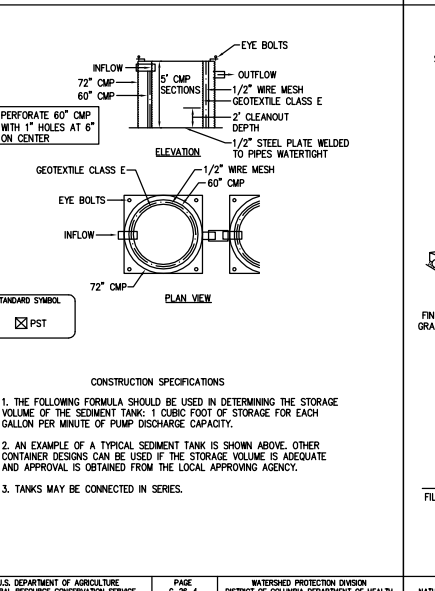
DETAIL 22 - SEDIMENT BASIN/TRAP BAFFLES



DETAIL 34 - PORTABLE SEDIMENT TANK (HORIZONTAL)



DETAIL 35 - PORTABLE SEDIMENT TANK (VERTICAL)



DETAIL 74 - TREE PROTECTION

