

PLAN 1/16" = 1'-0"



SECTION 'A-A' THROUGH STORMWATER PLANTER



STONE-FILLED WATERCOURSE



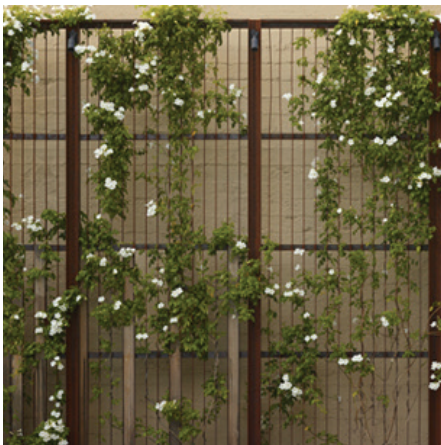
WOOD BENCH



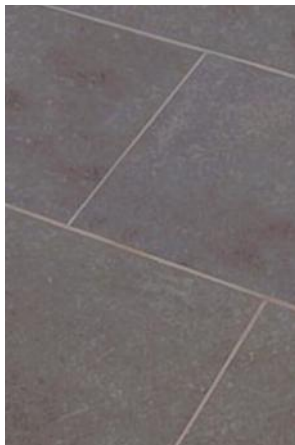
STORMWATER PLANTING



4' METAL LOUVERED PRIVACY SCREEN



GREEN SCREEN



STONE PAVERS



PERMEABLE UNIT PAVERS

REVISIONS	
1	PUD SUBMISSION 05/31/2013
2	
3	
4	
5	
6	
7	
8	
9	
10	

DATE: 05/31/2013
 PROJECT NO: 599
 DRAWN BY: TB
 CHECKED BY: LAB

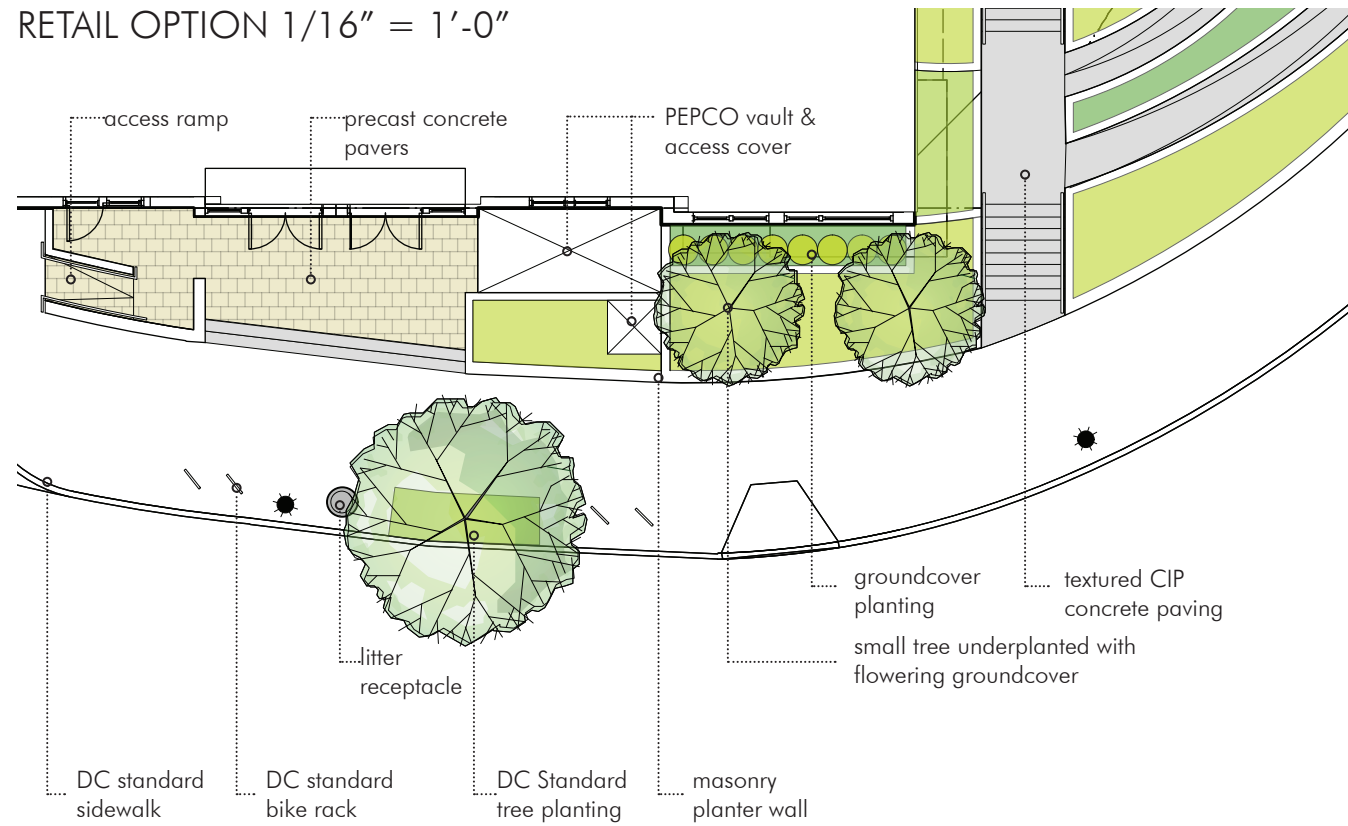
Florida & Q Street, LLC
 6820 Commercial Drive
 Springfield, VA 22151
 t: 703.750.6810 f: 703.750.6817

Landscape Architecture Bureau
 714 7th Street SE
 Washington, DC 20003
 t: 202.543.6553
 f: 202.543.6550

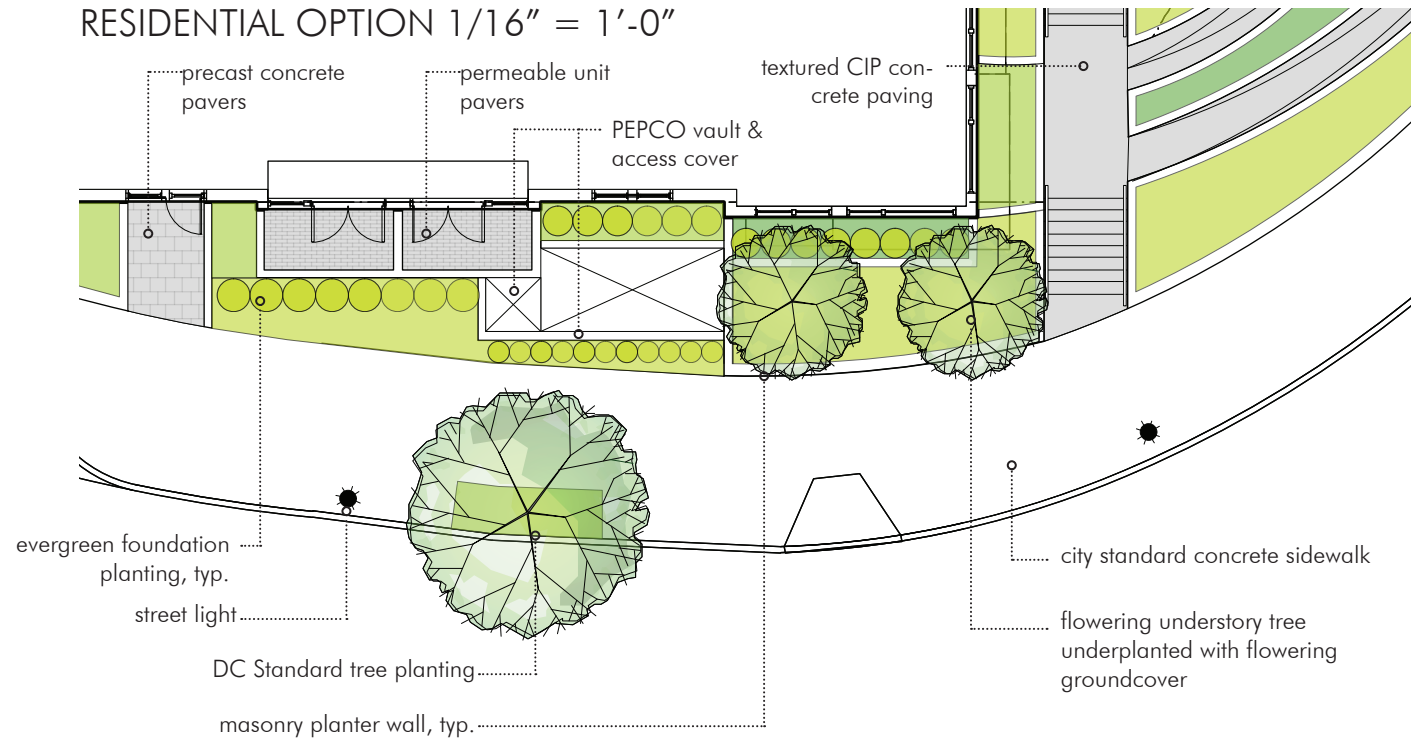
AMT, LLC
 10 G Street NE
 Suite 430
 Washington, DC 20002
 t: 202.289.4545
 f: 202.289.5051

1600 North Capitol Street NW
 Washington, DC 20002

RETAIL OPTION 1/16" = 1'-0"



RESIDENTIAL OPTION 1/16" = 1'-0"



BICYCLE RACK PER DC STANDARD



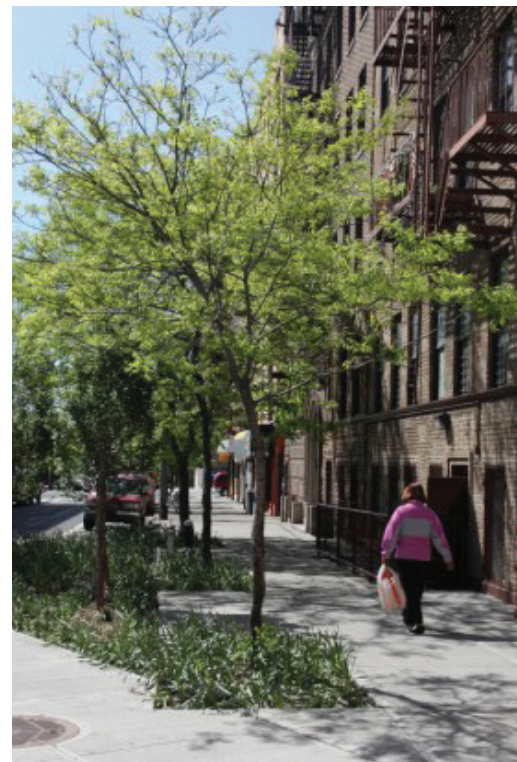
EVERGREEN GROUNDCOVER



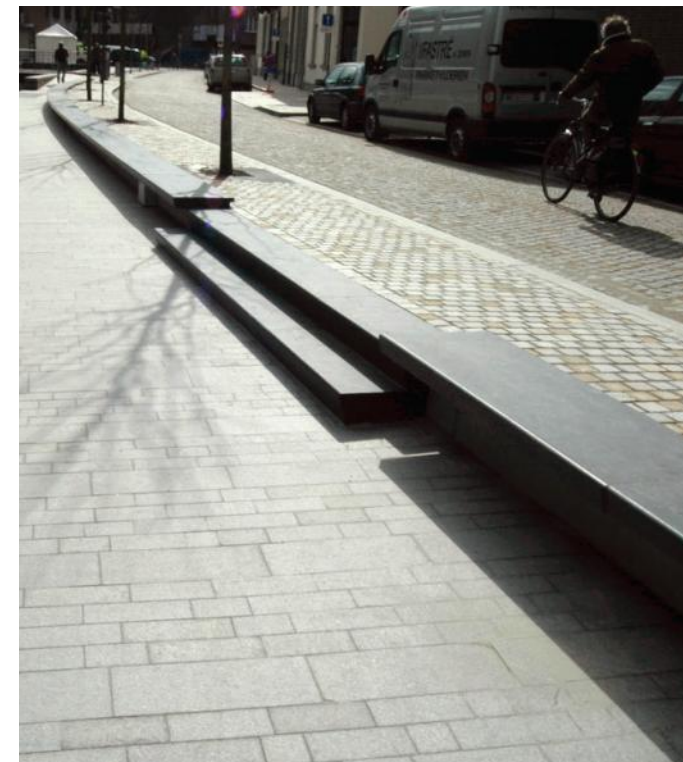
LITTER RECEPTACLE BY 'VICTOR STANLEY'



BRICK PLANTER WALL



UNDERSTORY TREE PLANTING WITH EVERGREEN GROUNDCOVER



STEPS TO RETAIL AREA WITH PRECAST UNIT PAVERS

Florida & Q Street, LLC
 6820 Commercial Drive
 Springfield, VA 22151
 t: 703.750.6810 f: 703.750.6817

Landscape Architecture Bureau
 714 7th Street SE
 Washington, DC 20003
 t: 202.543.6553
 f: 202.543.6550

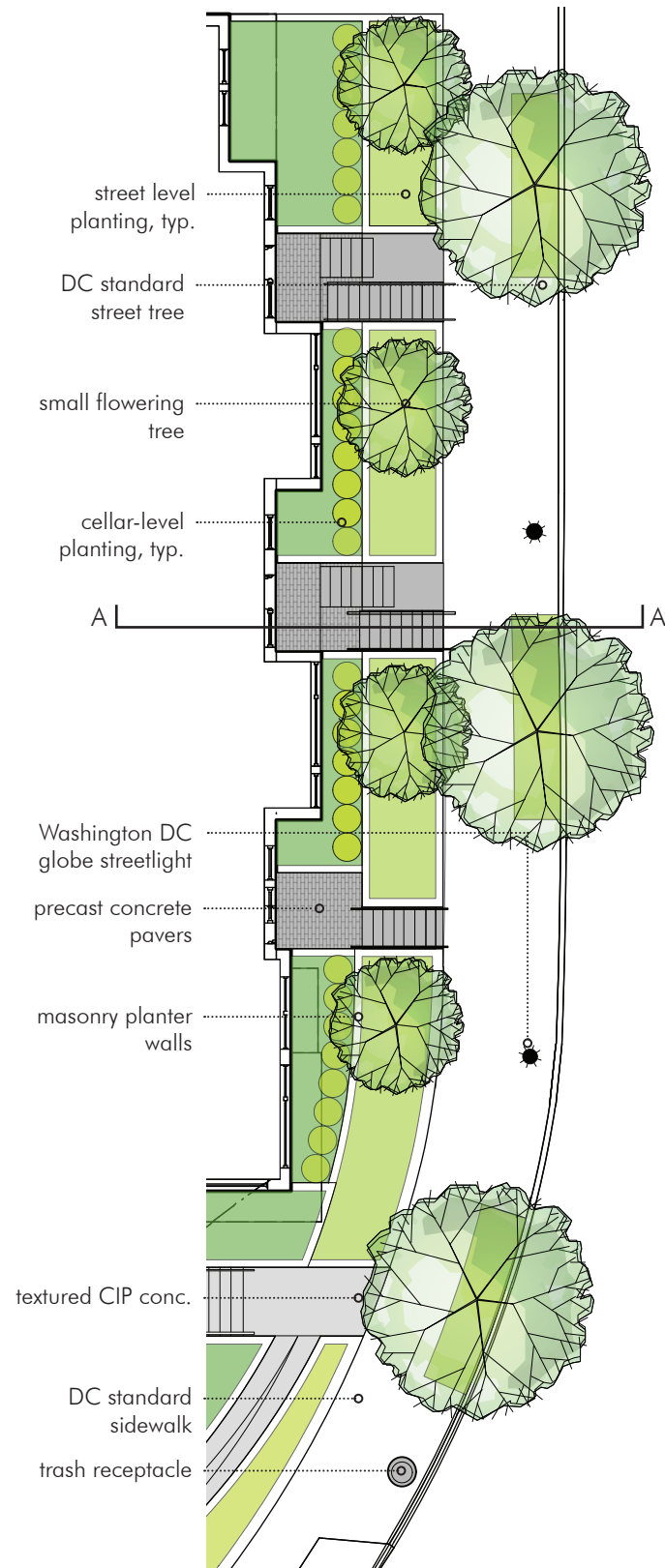
AMT, LLC
 10 G Street NE
 Suite 430
 Washington, DC 20002
 t: 202.289.4545
 f: 202.289.5051

1600 North Capitol Street NW
 Washington, DC 20002

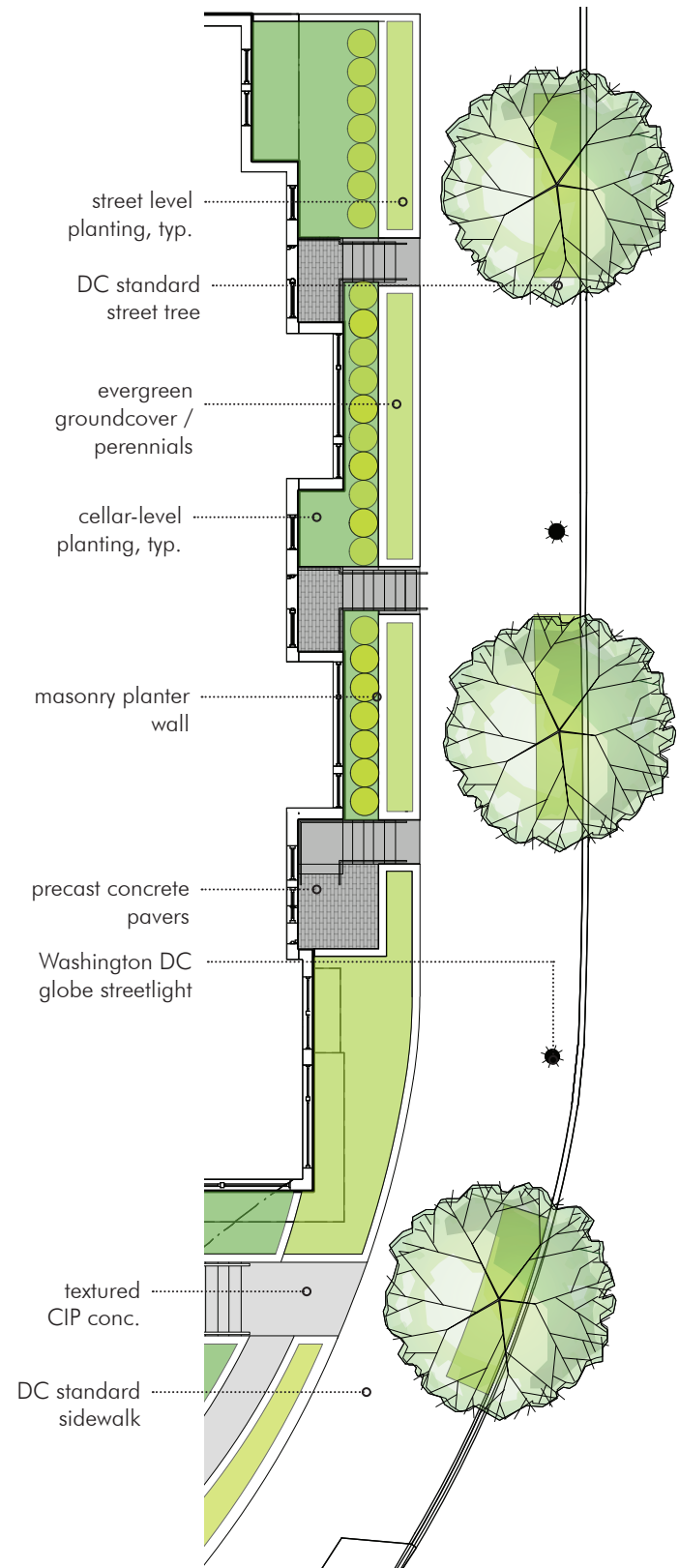
REVISIONS

1	PUD SUBMISSION	05/31/2013
2		
3		
4		
5		
6		
7		
8		
9		
10		

DATE: 05/31/2013
 PROJECT NO: 599
 DRAWN BY: TB
 CHECKED BY: LAB



RESIDENTIAL GARDEN | SCALE: 1/16"=1'
OPTION A: 5 STAIRS, 6'0" CLEAR PATH



RESIDENTIAL GARDEN | SCALE: 1/16"=1'
OPTION B: 3 STAIRS, 10'-0" CLEAR PATH



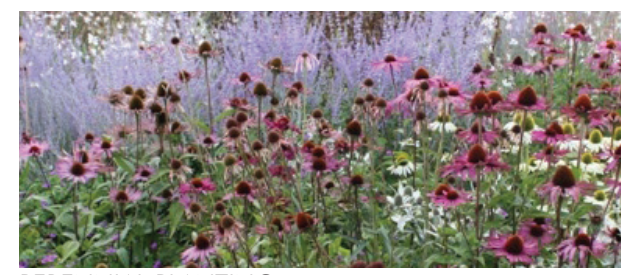
SECTION 'A-A' THROUGH TYPICAL ENTRY



MASONRY PLANTER WALLS



PRECAST CONCRETE PAVERS



PERENNIAL PLANTING



GROUNDCOVER



SMALL FLOWERING TREE

Florida & Q Street, LLC
6820 Commercial Drive
Springfield, VA 22151
t: 703.750.6810 f: 703.750.6817

Landscape Architecture Bureau
714 7th Street SE
Washington, DC 20003
t: 202.543.6553
f: 202.543.6550

AMT, LLC
10 G Street NE
Suite 430
Washington, DC 20002
t: 202.289.4545
f: 202.289.5051

1600 North Capitol Street NW
Washington, DC 20002

REVISIONS

1	PUD SUBMISSION	05/31/2013
2		
3		
4		
5		
6		
7		
8		
9		
10		

DATE: 05/31/2013
PROJECT NO: 599
DRAWN BY: TB
CHECKED BY: LAB