



Florida & Q Street, LLC
 6820 Commercial Drive
 Springfield, VA 22151
 t: 703.750.6810 f: 703.750.6817

Landscape Architecture Bureau
 714 7th Street SE
 Washington, DC 20003
 t: 202.543.6553
 f: 202.543.6550

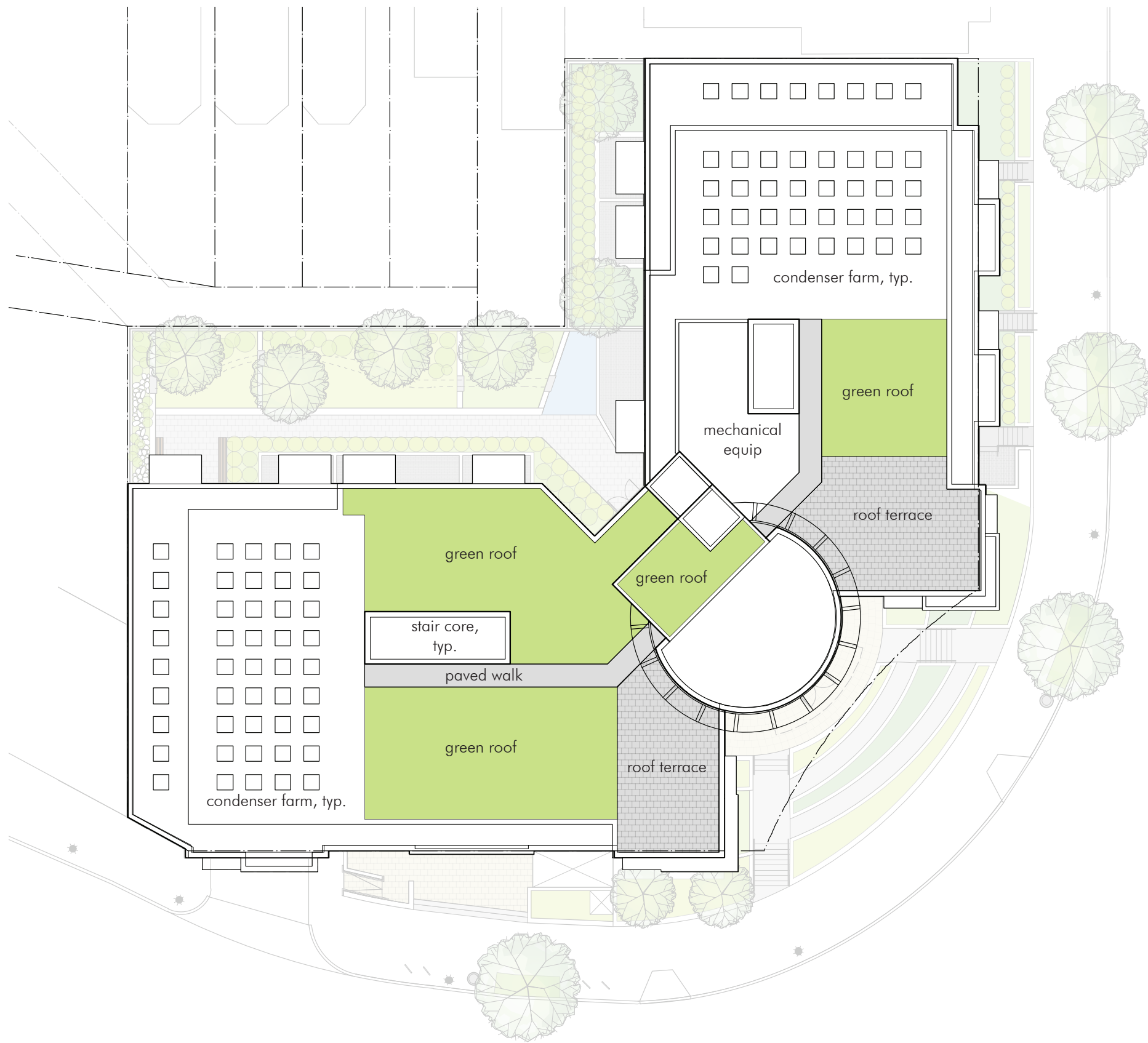
AMT, LLC
 10 G Street NE
 Suite 430
 Washington, DC 20002
 t: 202.289.4545
 f: 202.289.5051

1600 North Capitol Street NW
 Washington, DC 20002

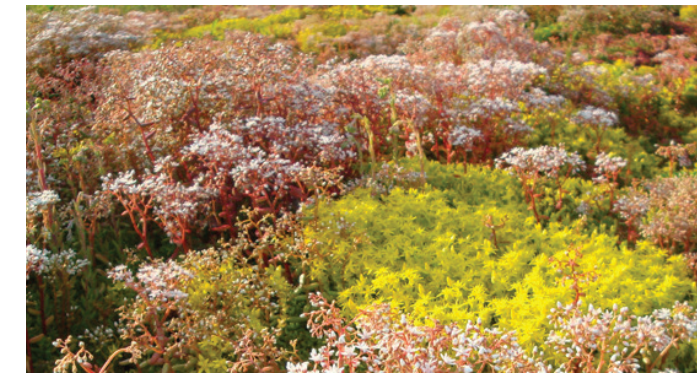
REVISIONS

1	PUD SUBMISSION	05/31/2013
2		
3		
4		
5		
6		
7		
8		
9		
10		

DATE: 05/31/2013
 PROJECT NO: 599
 DRAWN BY: TB
 CHECKED BY: LAB



VEGETATED GREEN ROOF SYSTEM



VEGETATED GREEN ROOF SYSTEM



PEDESTAL PAVERS

Florida & Q Street, LLC
 6820 Commercial Drive
 Springfield, VA 22151
 t: 703.750.6810 f: 703.750.6817

Landscape Architecture Bureau
 714 7th Street SE
 Washington, DC 20003
 t: 202.543.6553
 f: 202.543.6550

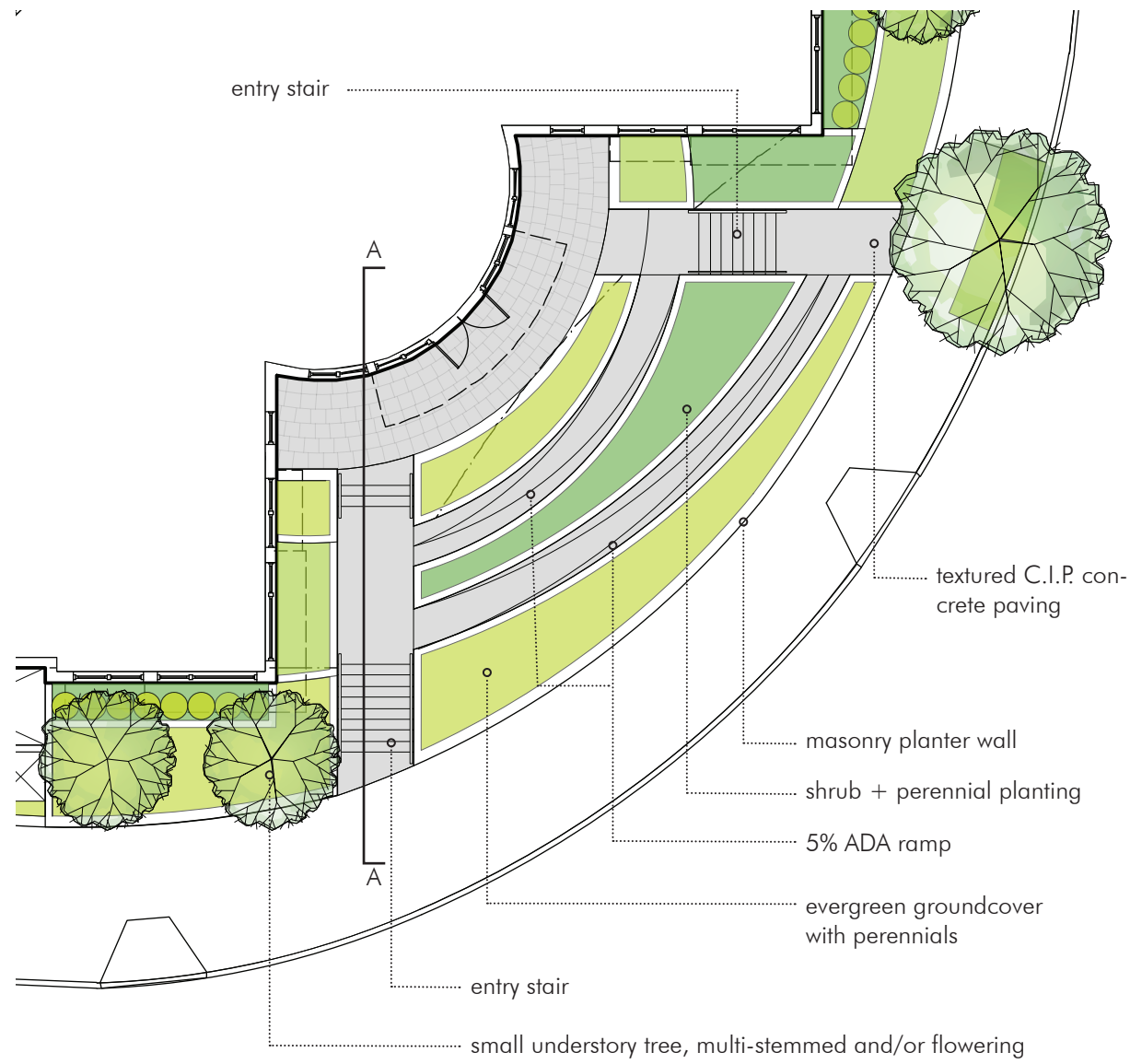
AMT, LLC
 10 G Street NE
 Suite 430
 Washington, DC 20002
 t: 202.289.4545
 f: 202.289.5051

1600 North Capitol Street NW
 Washington, DC 20002

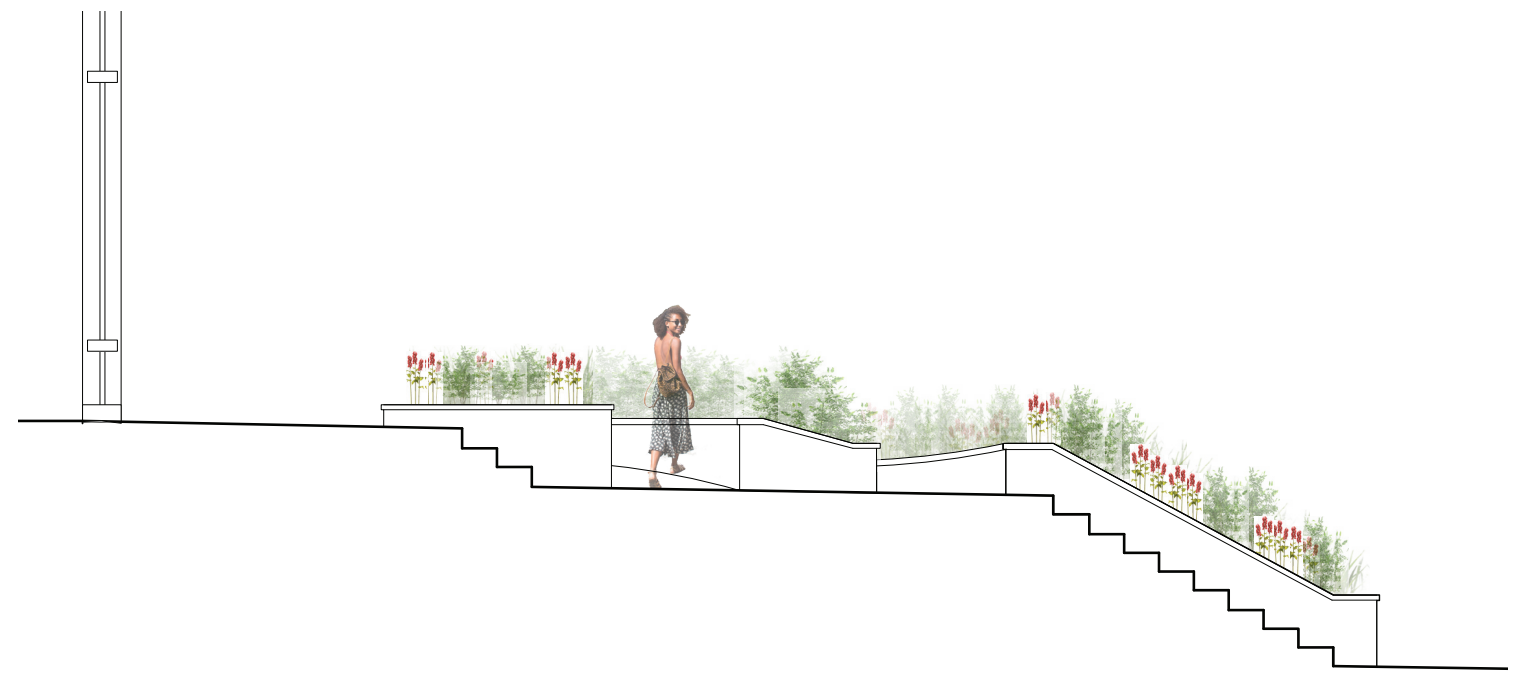
REVISIONS

1	PUD SUBMISSION	05/31/2013
2		
3		
4		
5		
6		
7		
8		
9		
10		

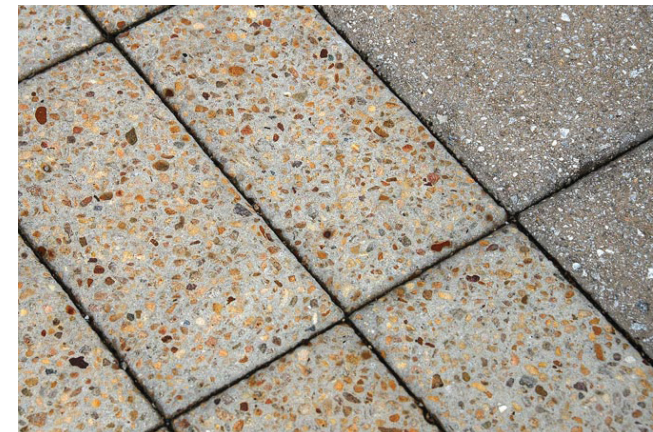
DATE: 05/31/2013
 PROJECT NO: 599
 DRAWN BY: TB
 CHECKED BY: LAB



PLAN | 1/16" = 1'-0"



SECTION 'A-A' THROUGH ENTRY STAIR



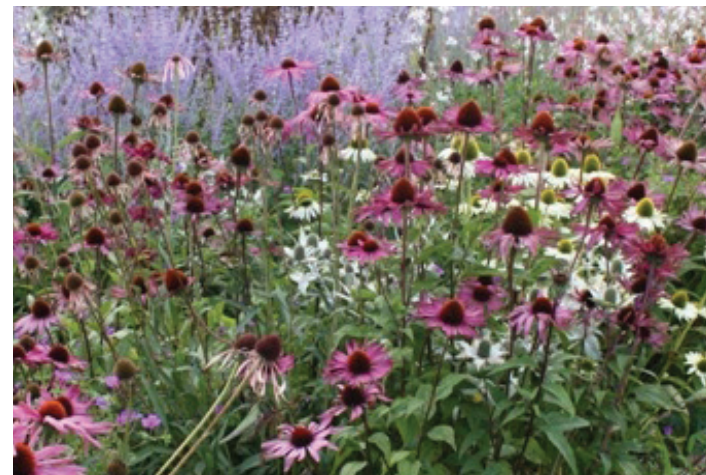
PRECAST UNIT PAVERS AT ENTRY



TEXTURED C.I.P. CONCRETE



GROUNDCOVER PLANTING



PERENNIAL PLANTING



ENTRY PLANTING CONCEPT



LITTER RECEPTACLE BY 'VICTOR STANLEY'



MASONRY PLANTER WALL

Florida & Q Street, LLC
6820 Commercial Drive
Springfield, VA 22151
t: 703.750.6810 f: 703.750.6817

Landscape Architecture Bureau
714 7th Street SE
Washington, DC 20003
t: 202.543.6553
f: 202.543.6550

AMT, LLC
10 G Street NE
Suite 430
Washington, DC 20002
t: 202.289.4545
f: 202.289.5051

1600 North Capitol Street NW
Washington, DC 20002

REVISIONS

1	PUD SUBMISSION	05/31/2013
2		
3		
4		
5		
6		
7		
8		
9		
10		

DATE: 05/31/2013
PROJECT NO: 599
DRAWN BY: TB
CHECKED BY: LAB