



Metal Mesh Panels-
CR Laurence - City Center, Las Vegas



Dimensional Metal Panel -
Alucobond - Uppsala Congress Hall, Sweden



Extruded Metal Cornice



Side-illuminated Fritted Glass Art
Wall

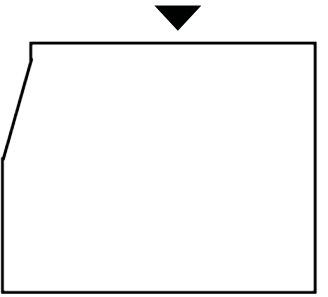


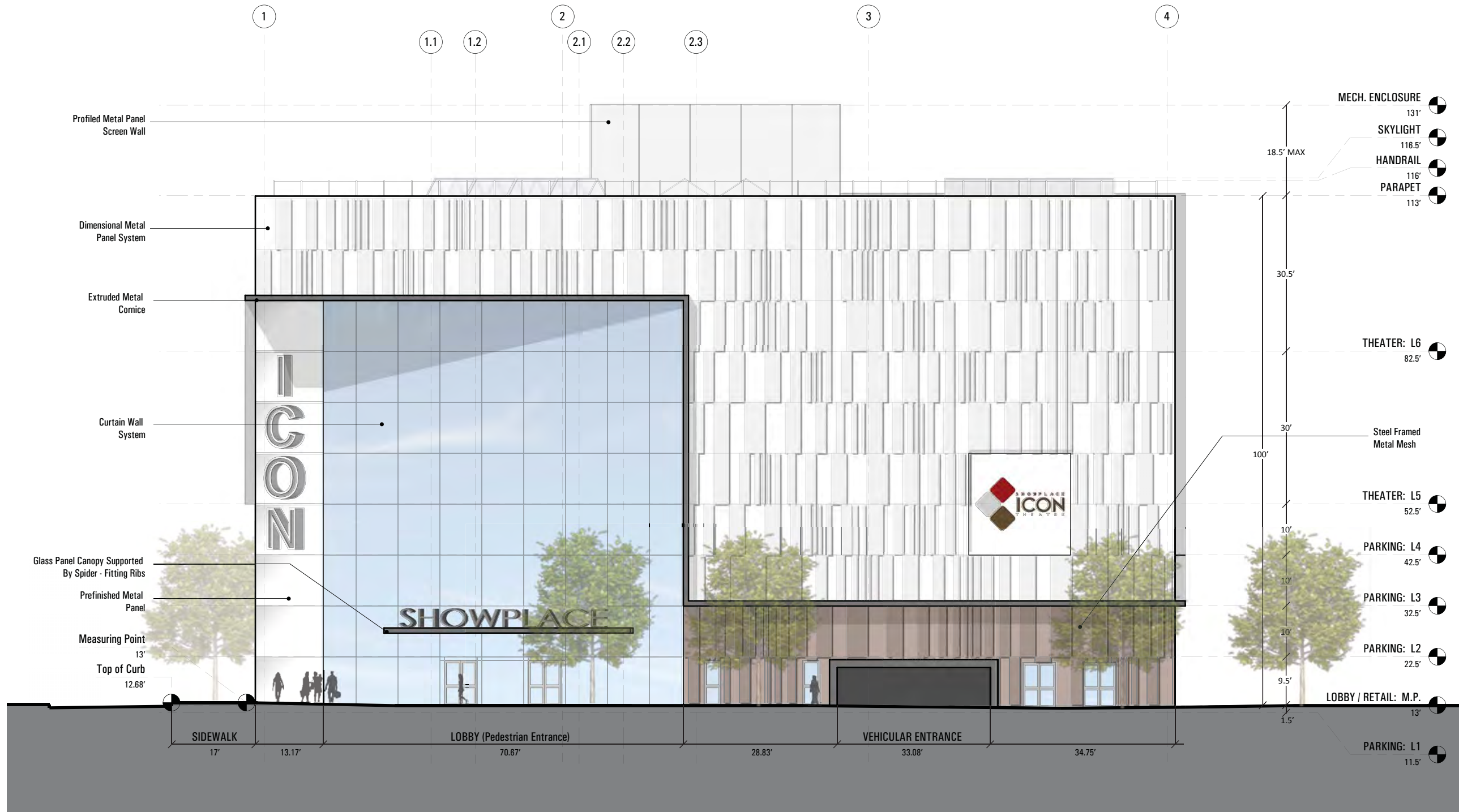
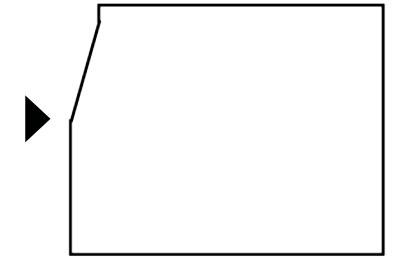
Glass Canopy held with Spider-Fitting Ribs

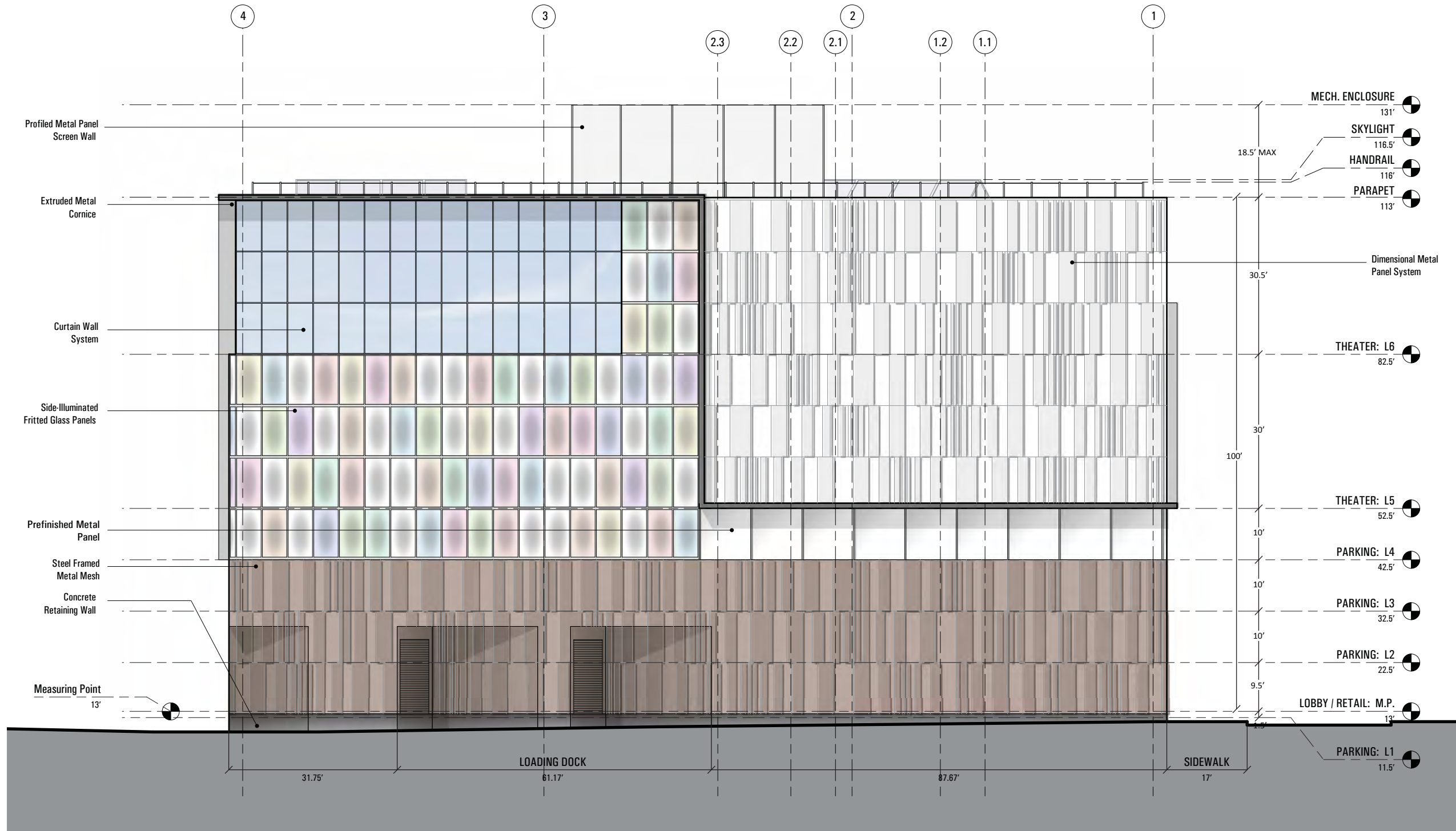
F1 Block Cinema

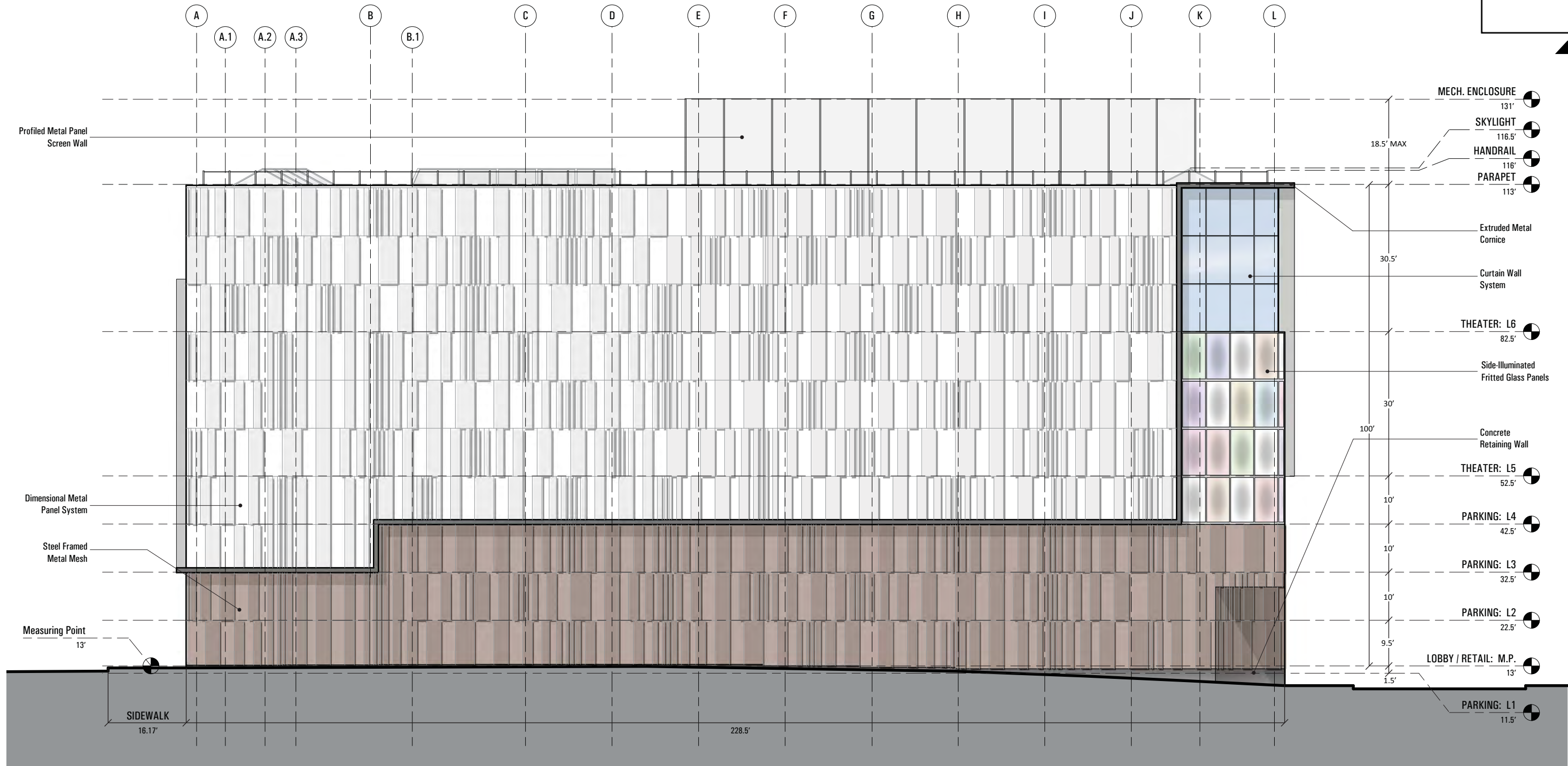
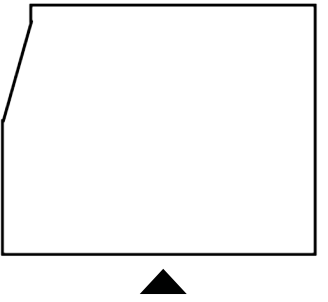
Forest City | Second-Stage PUD Application 02.22.2013

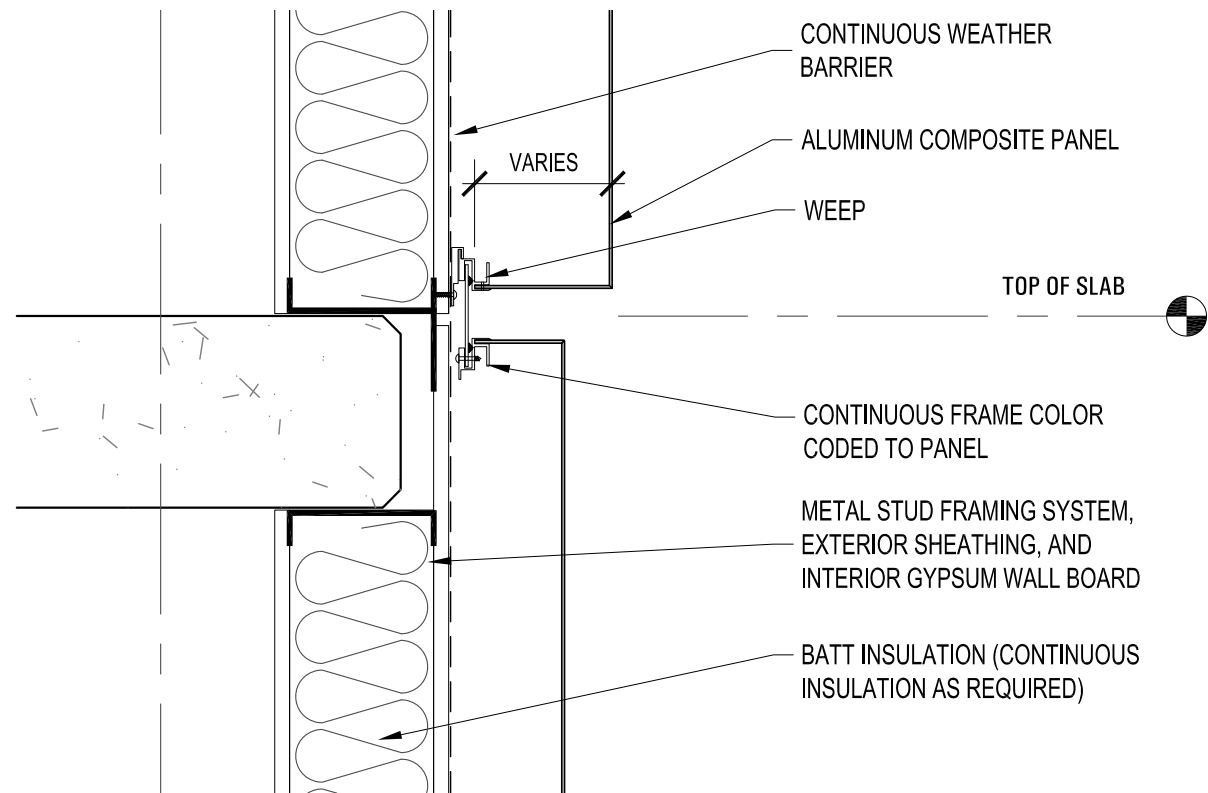
Material Selections





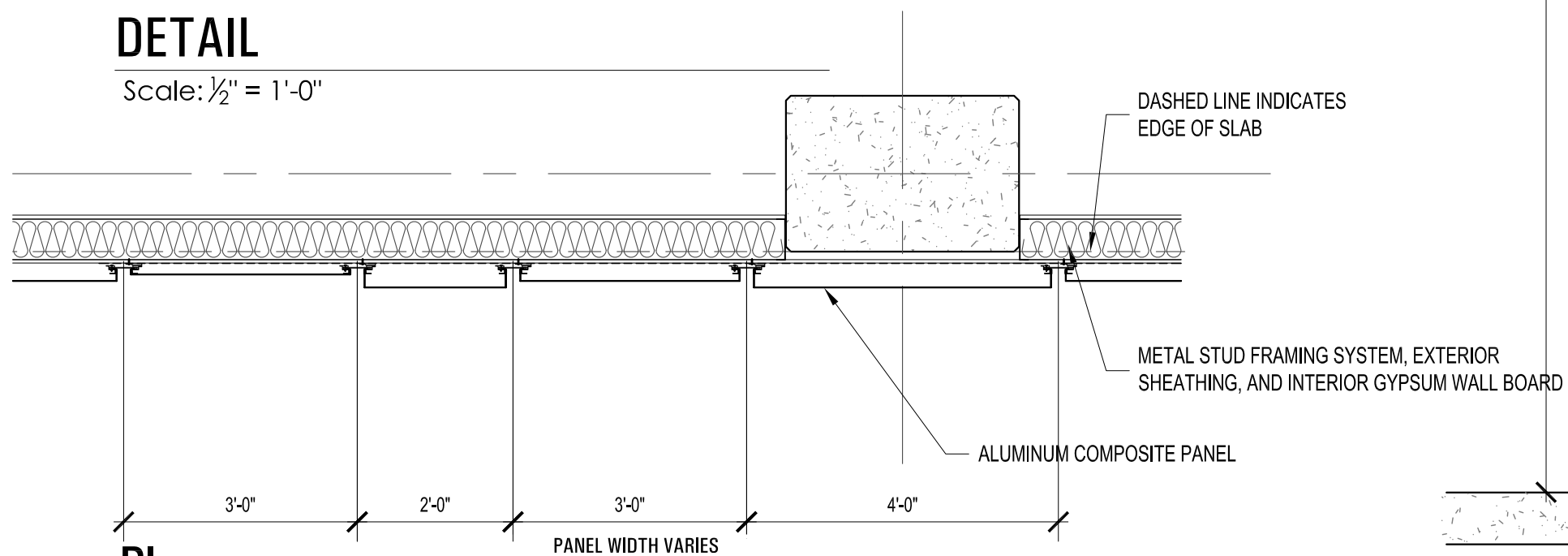






DETAIL

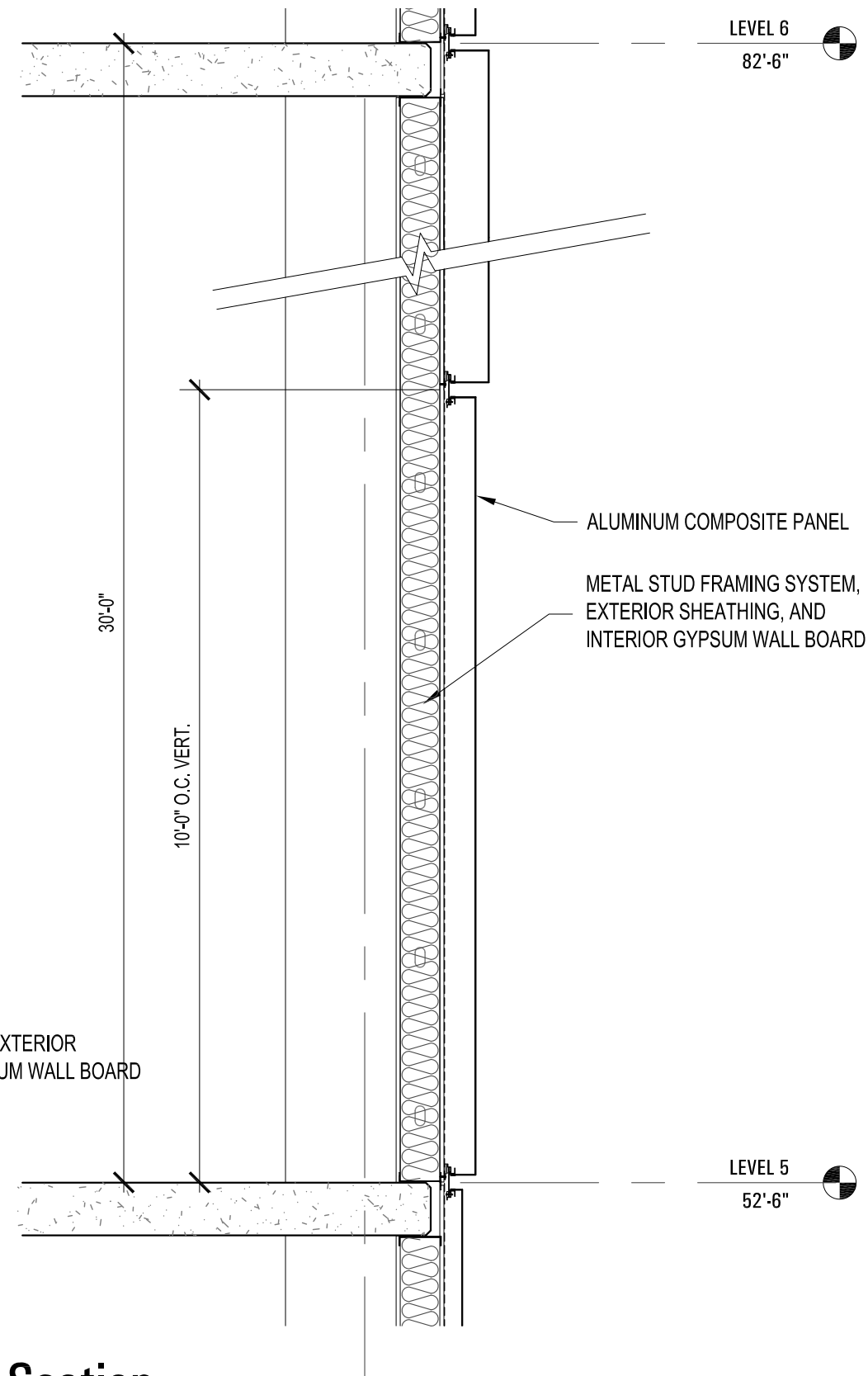
Scale: 1/2" = 1'-0"



Plan

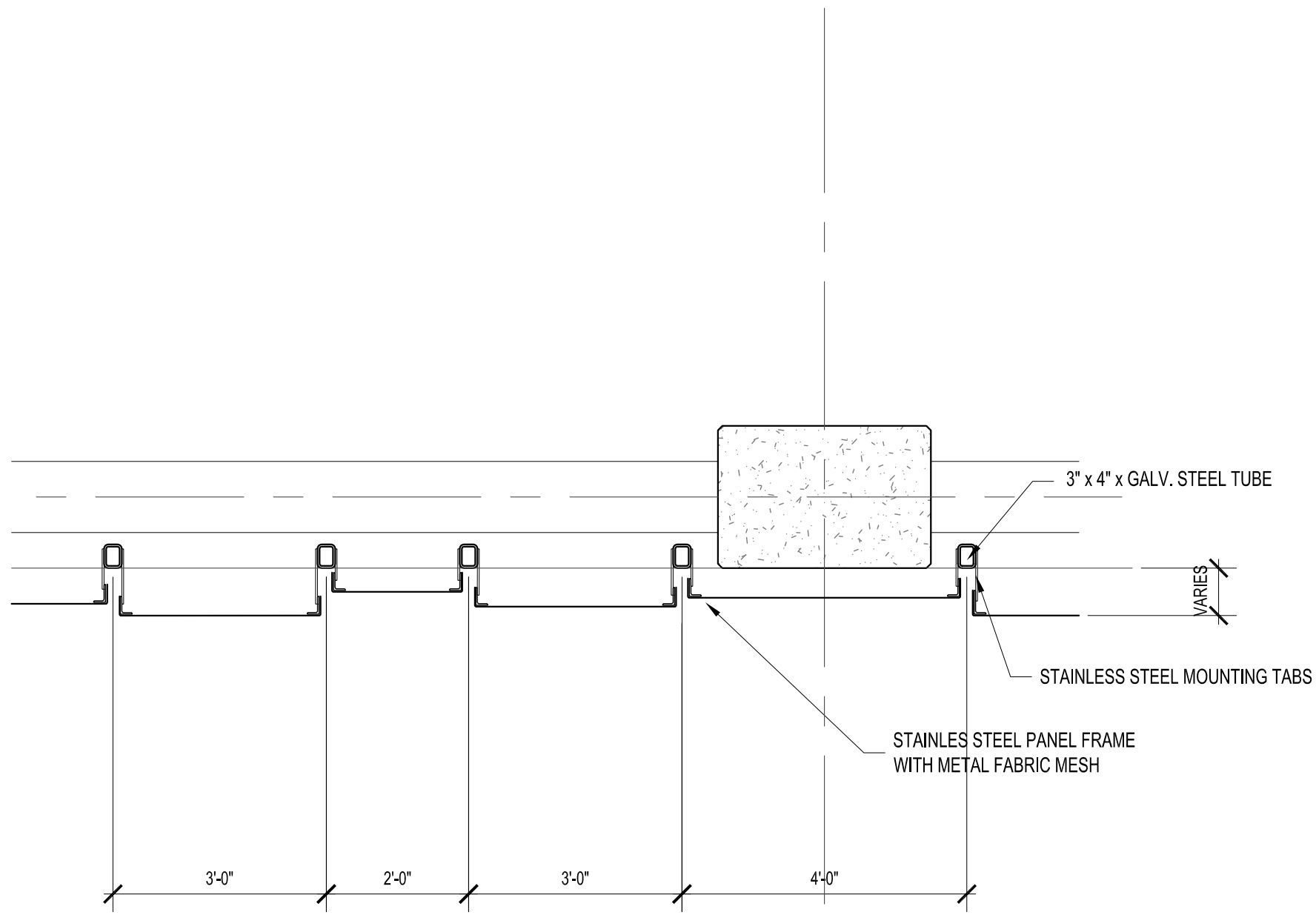
Scale: 1/2" = 1'-0"

ALUMINUM COMPOSITE PANEL SYSTEM



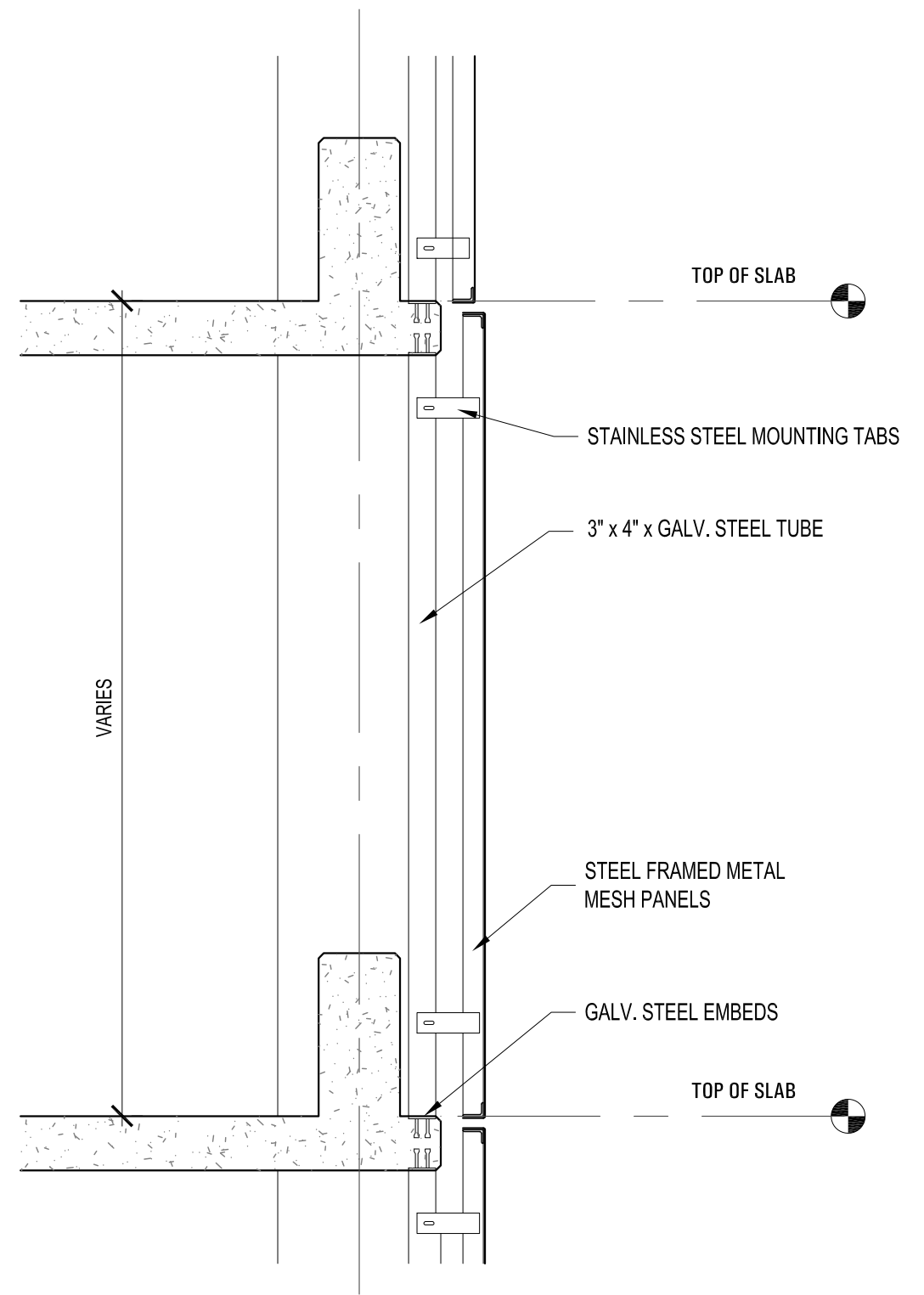
Section

Scale: 1/2" = 1'-0"



Plan

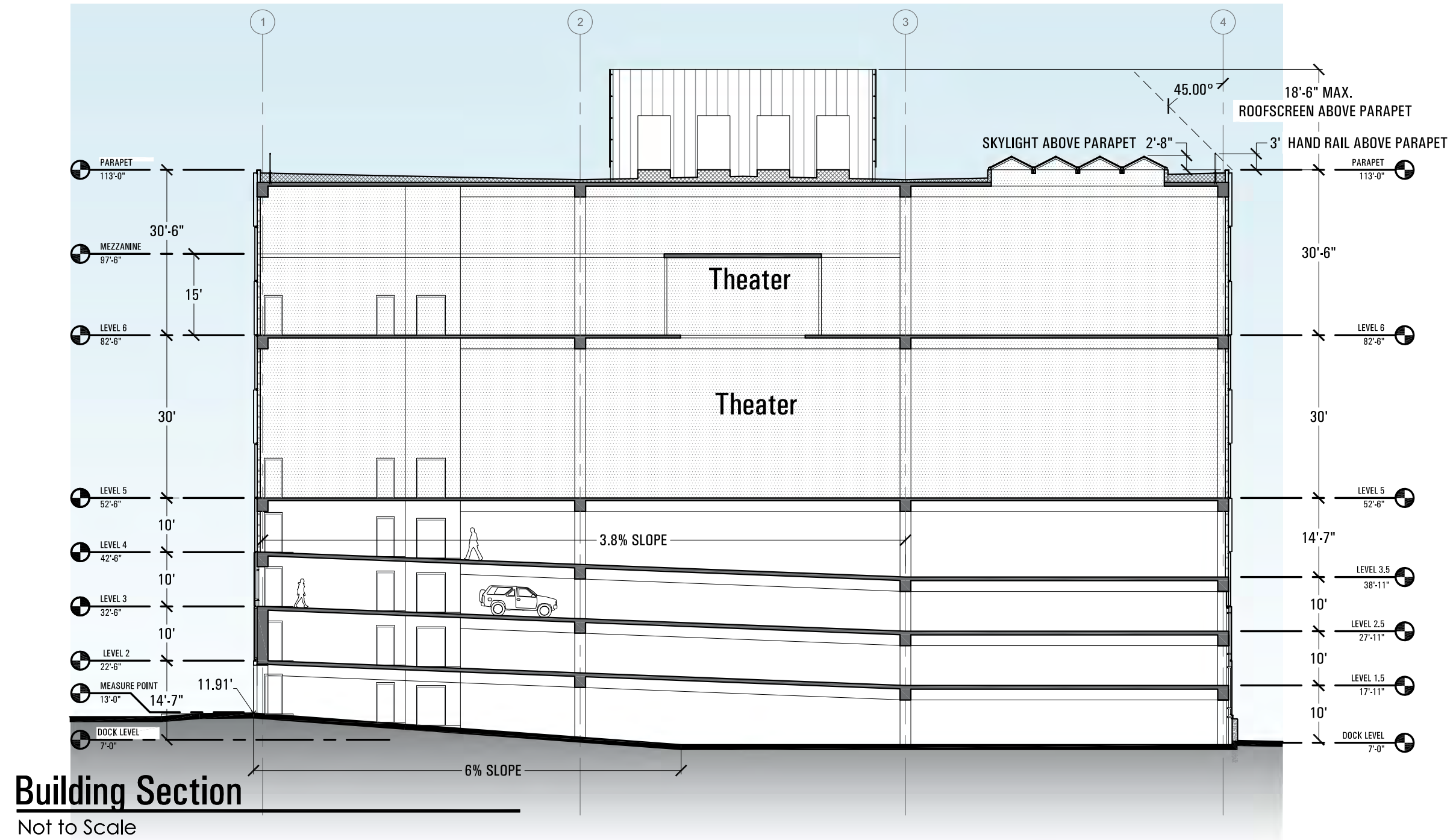
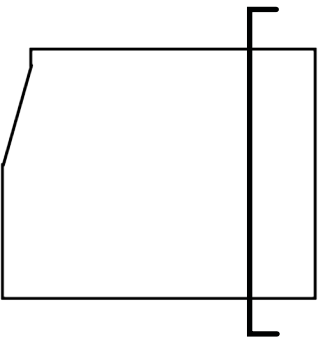
Scale: 1/2" = 1'-0"



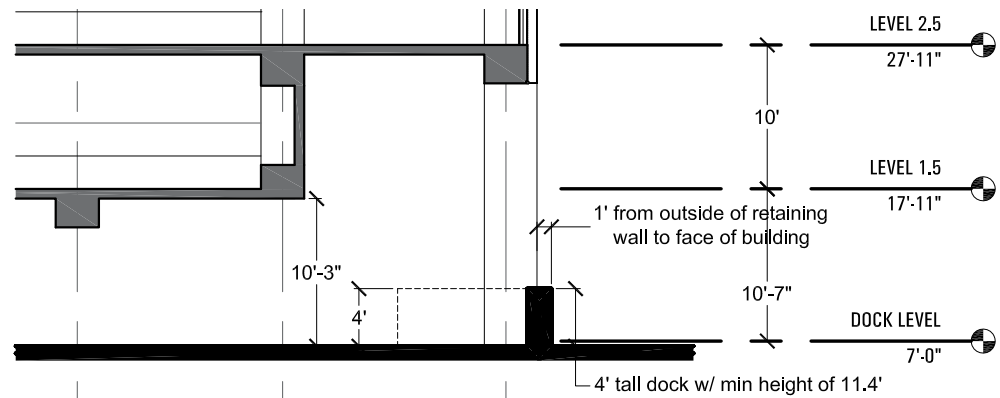
Section

Scale: 1/2" = 1'-0"

METAL MESH PANEL SYSTEM

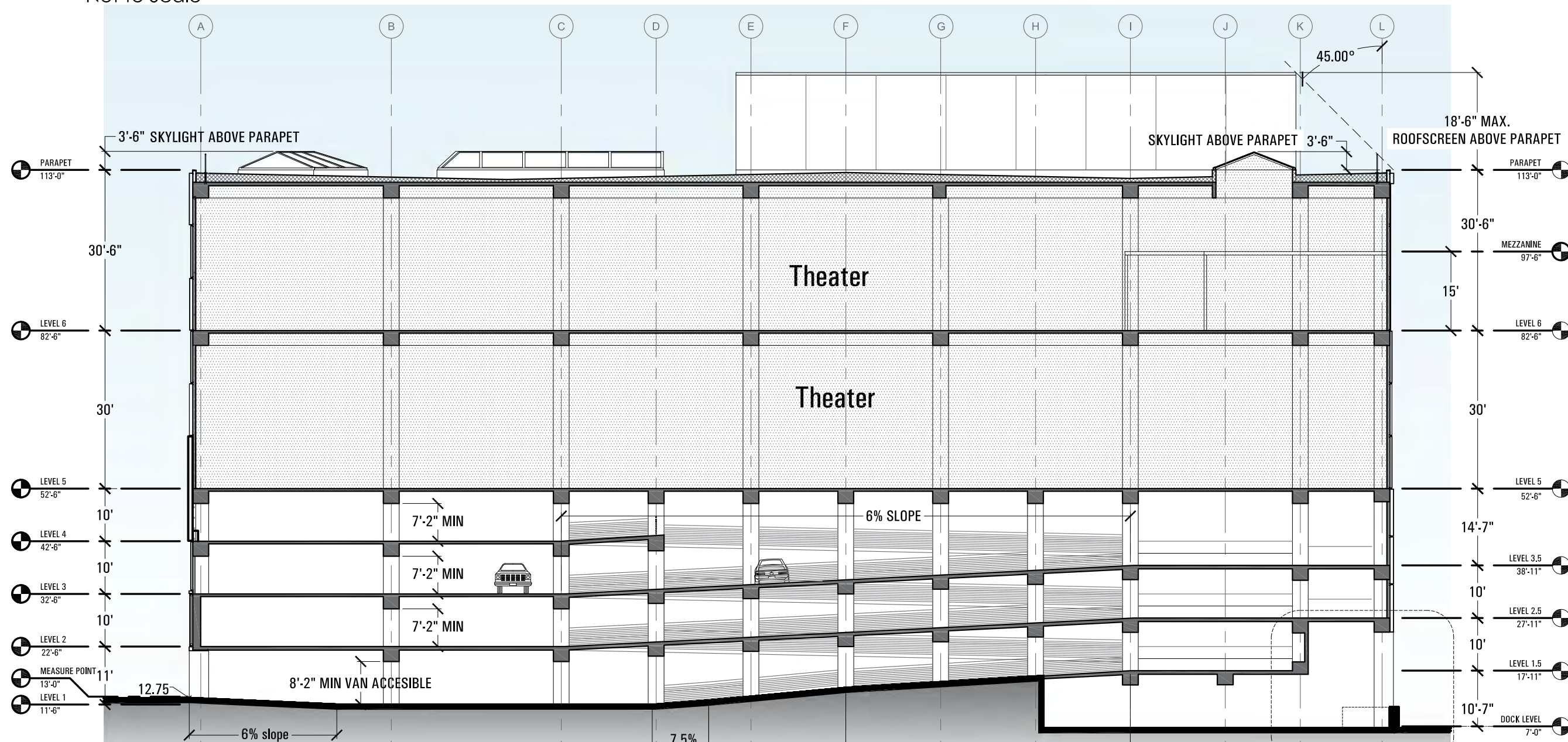
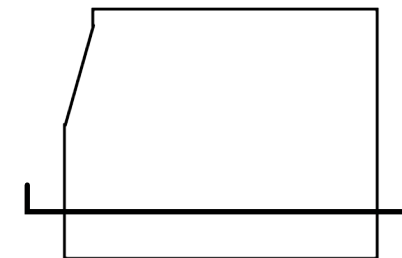


Building Section
Not to Scale



Detailed Section

Not to Scale



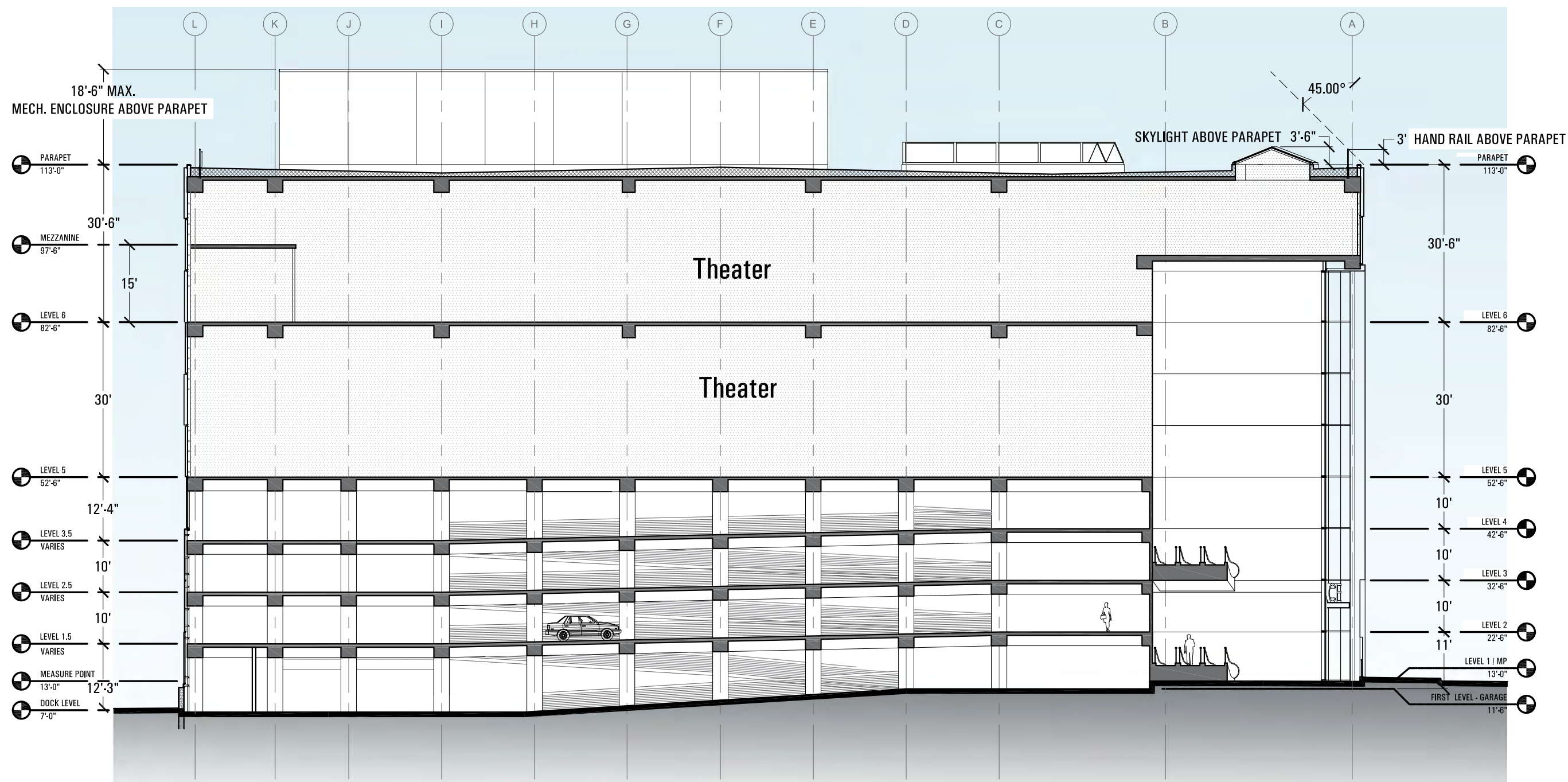
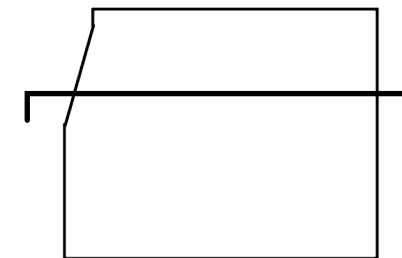
Building Section

Not to Scale

Note: Allowed building height of 100' from mid-building TOC elevation of 13'

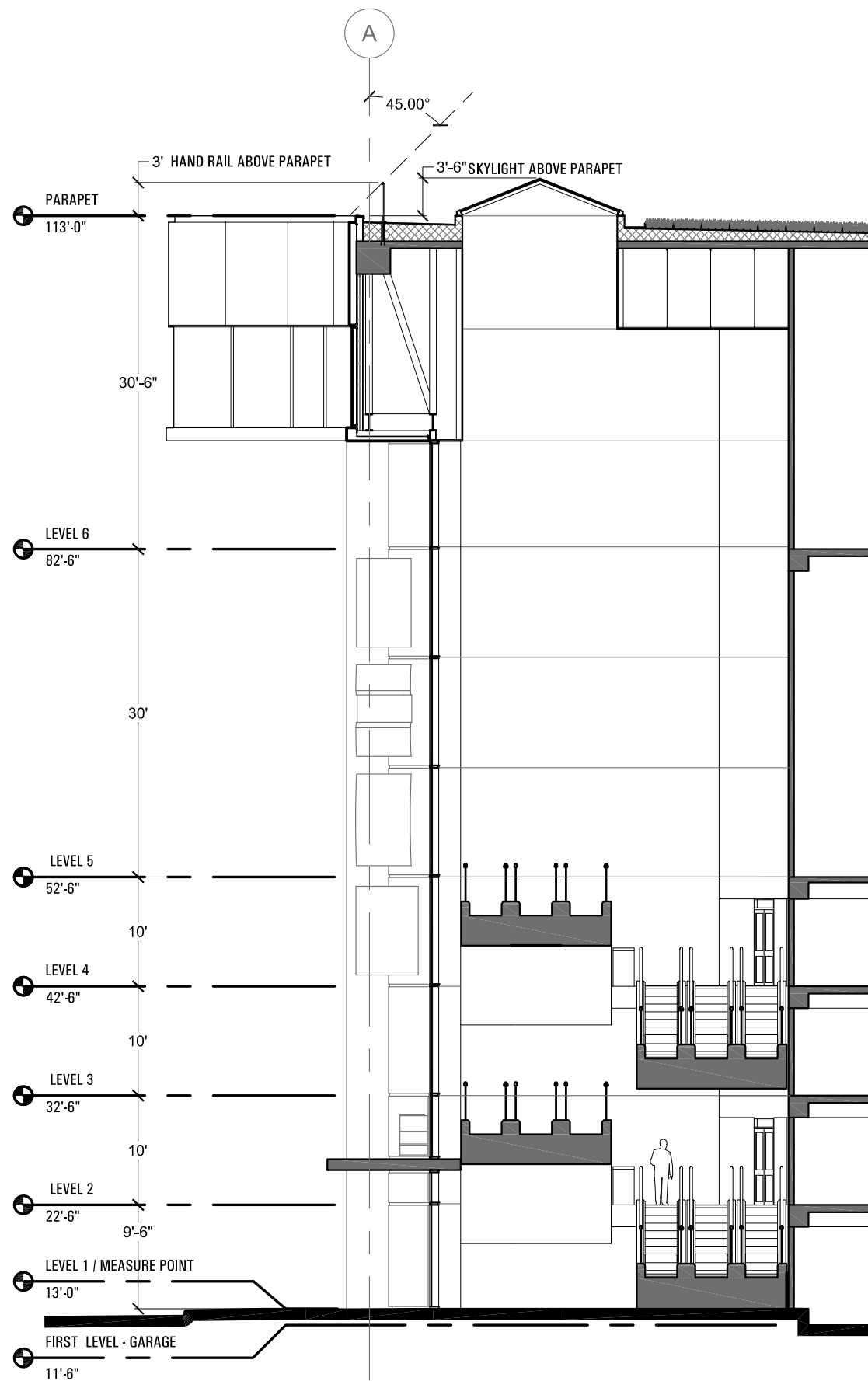
Detailed Section





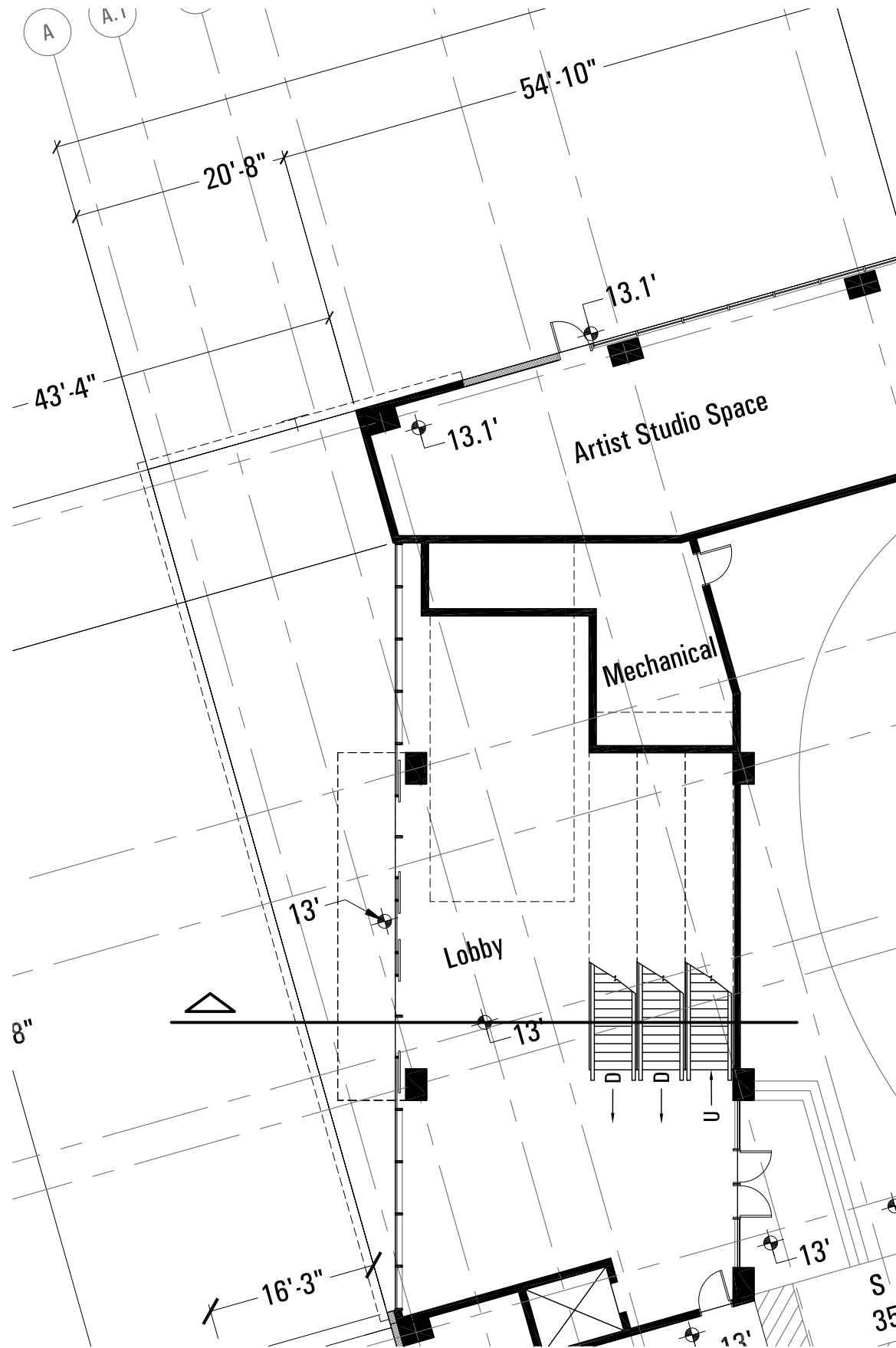
Building Section

Not to Scale



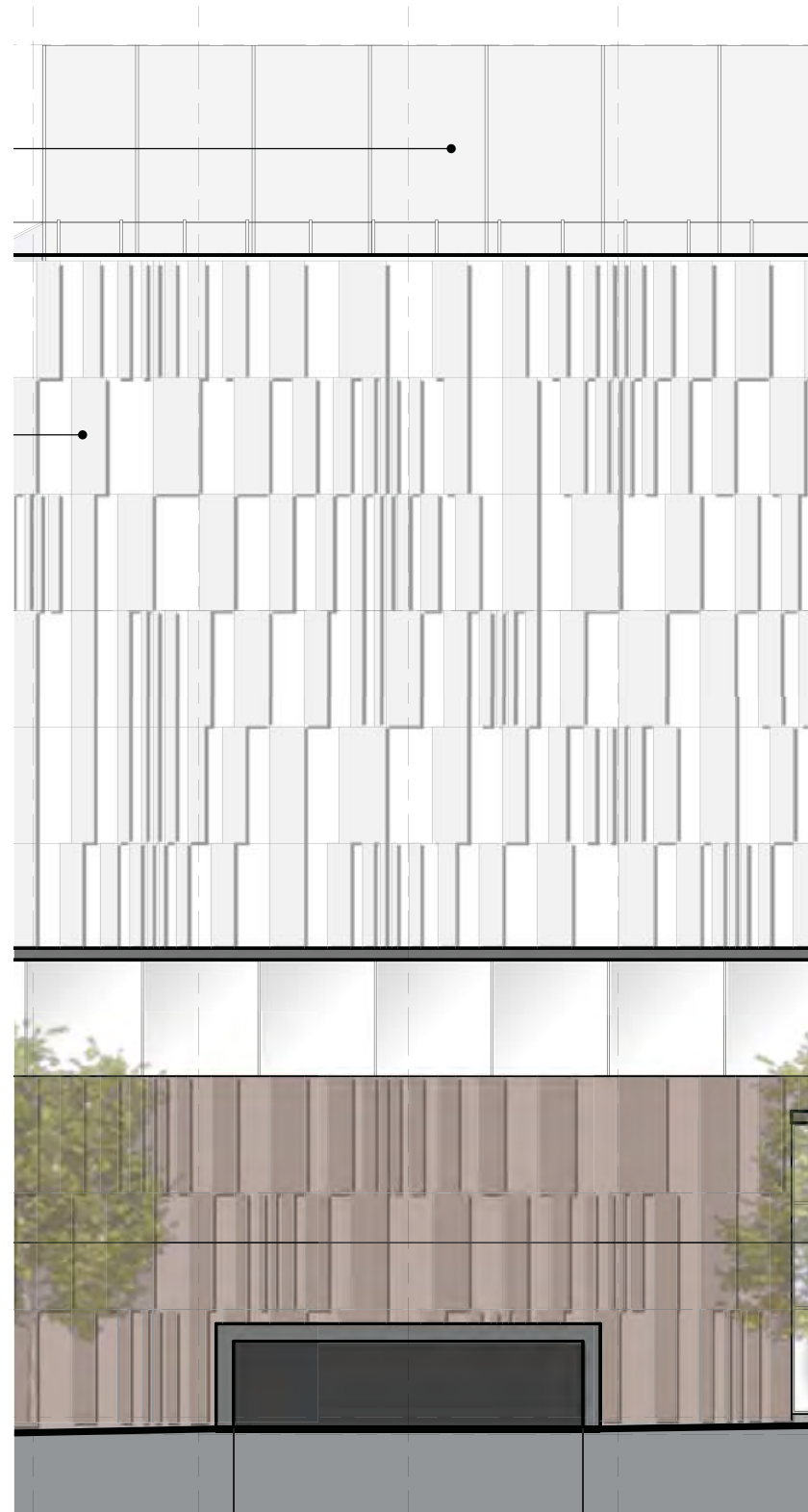
Building Section

NTS



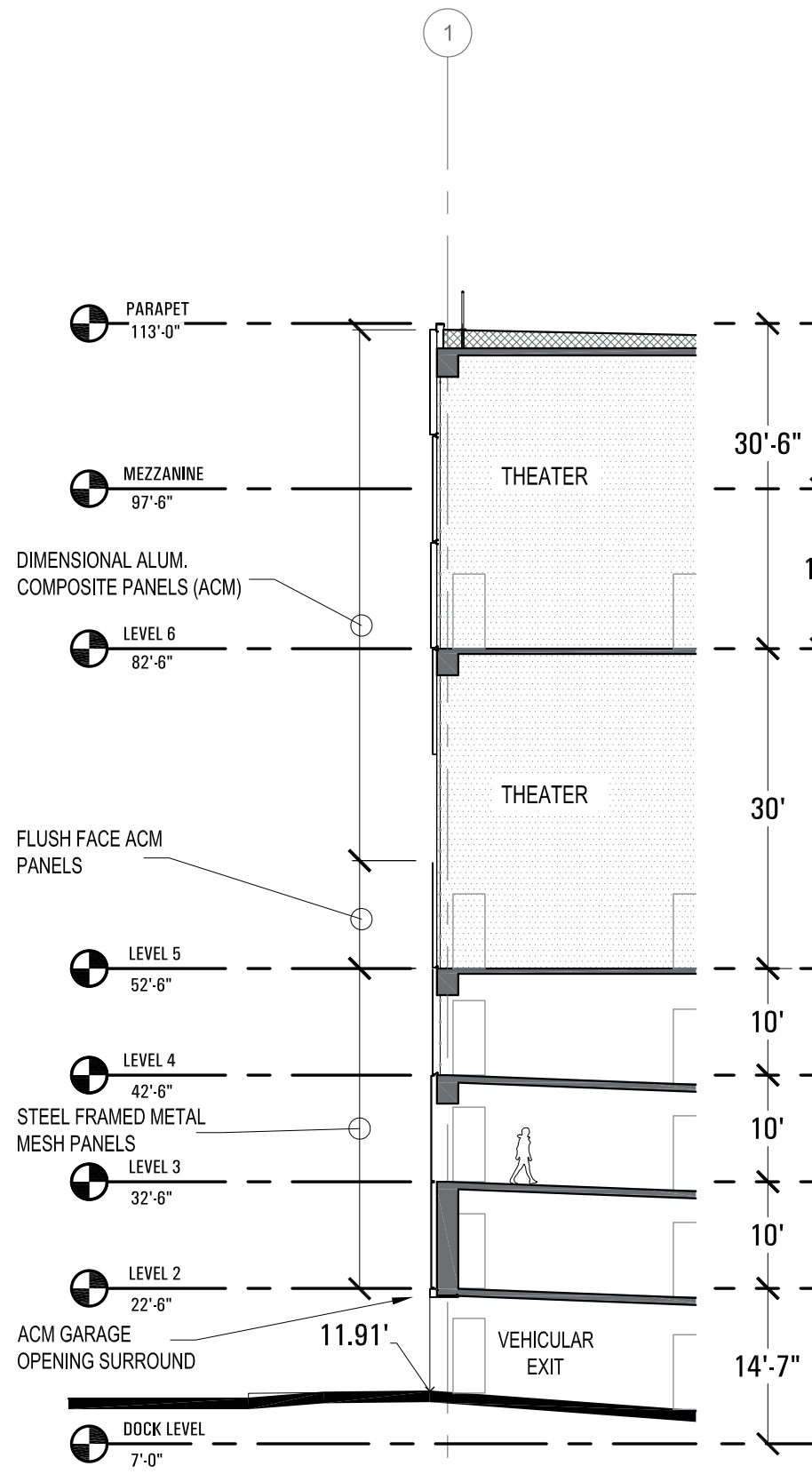
Floor Plan

NTS



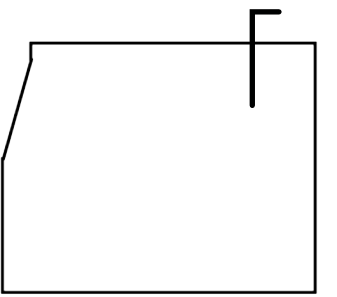
Enlarged Ext.Elevation

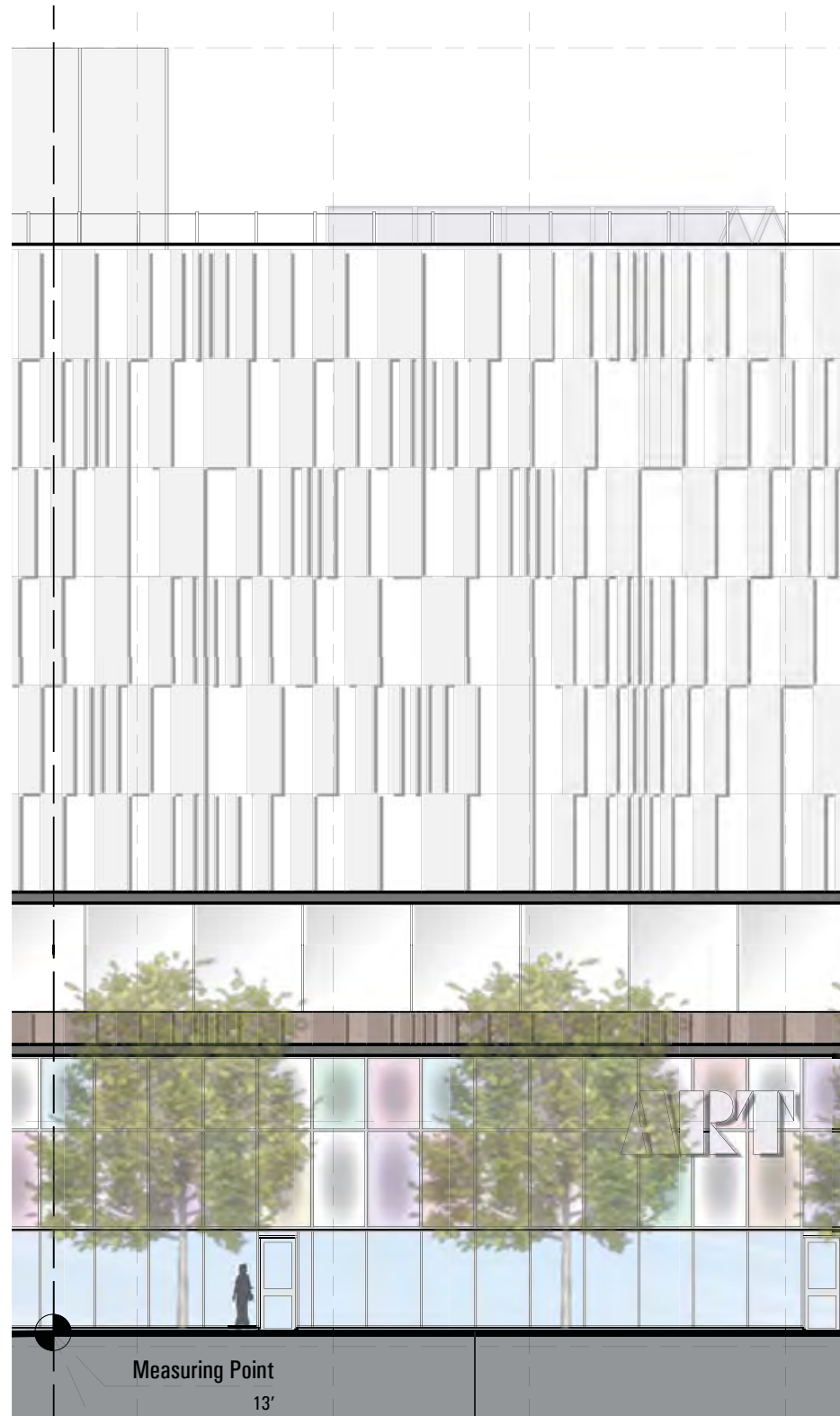
Scale: 1/16" = 1'-0"



Building Section

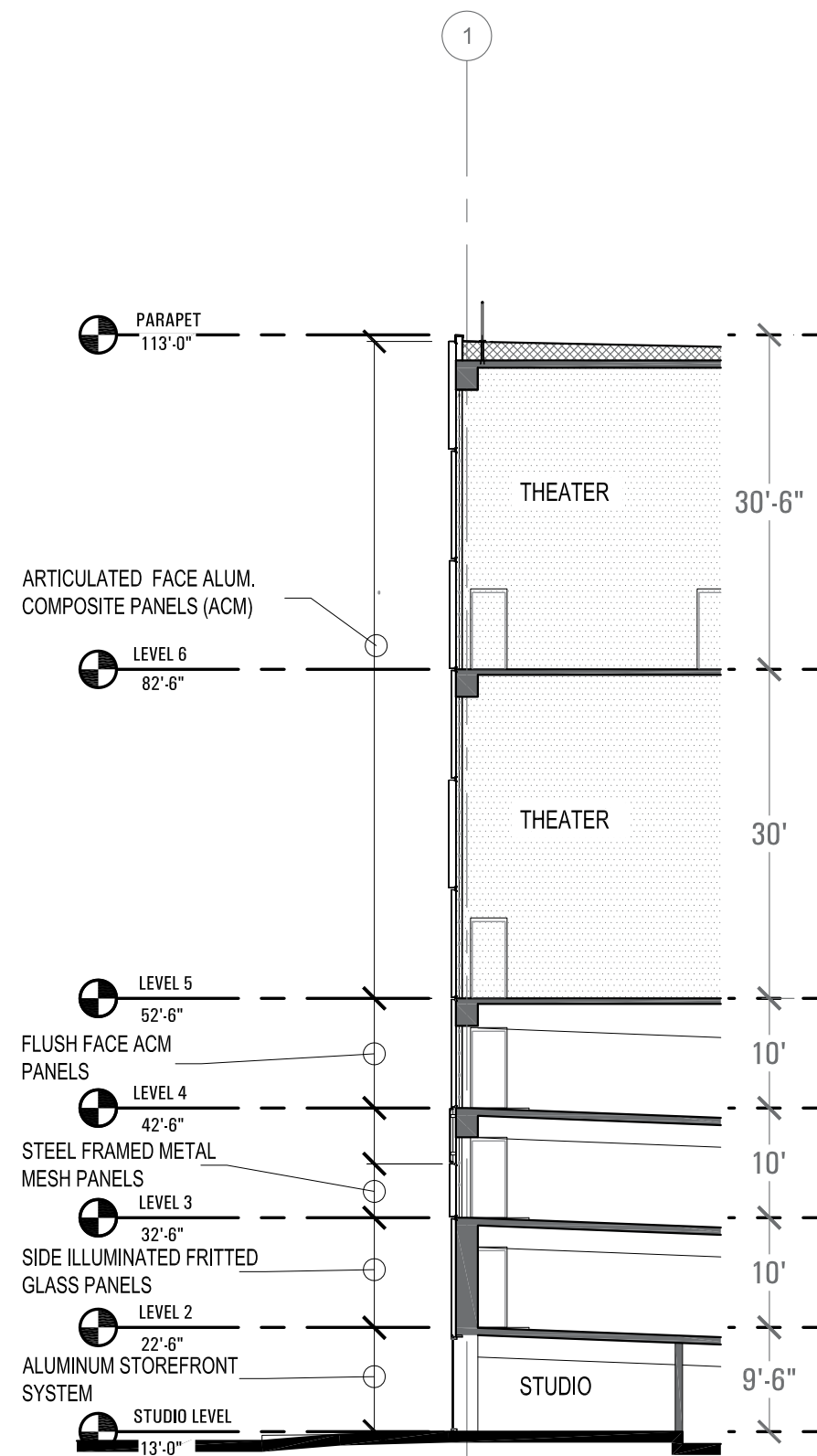
Scale: 1/16" = 1'-0"





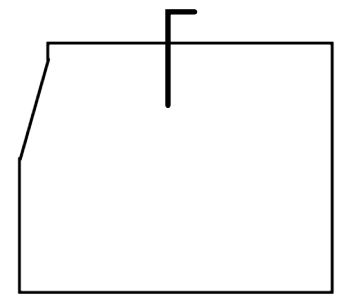
Enlarged Ext.Elevation

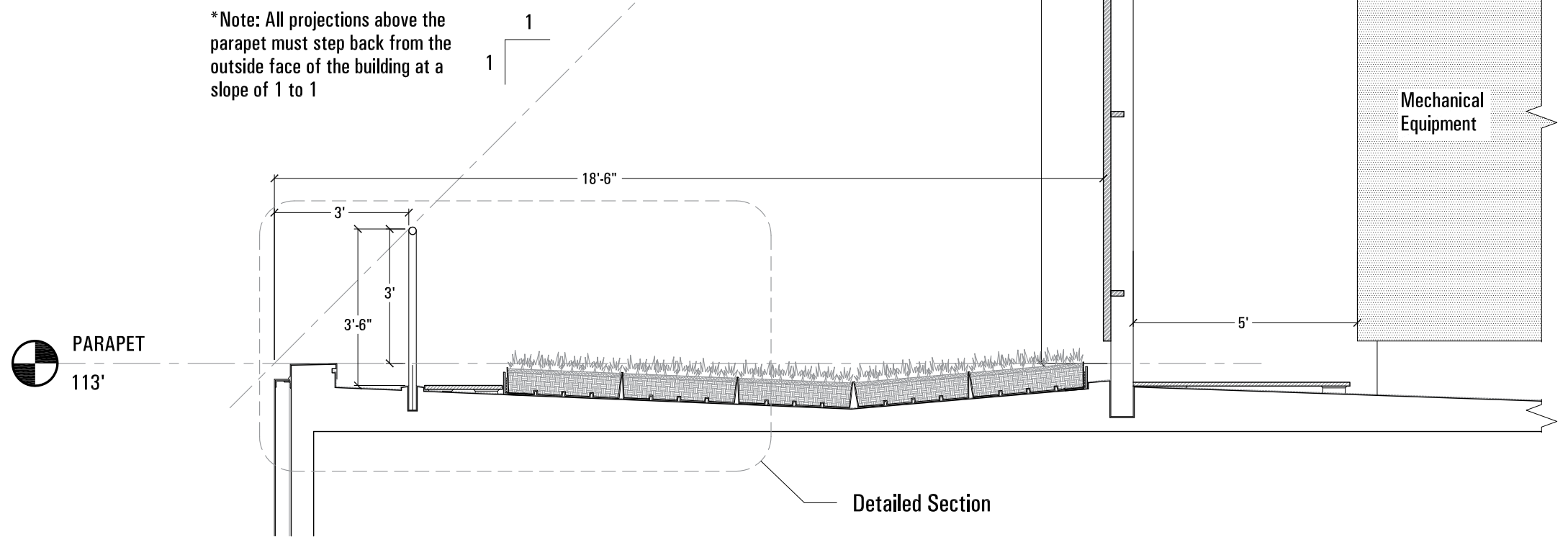
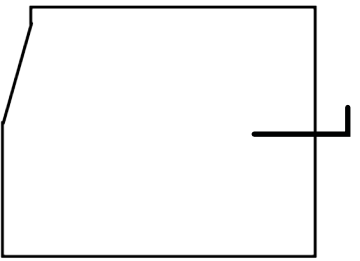
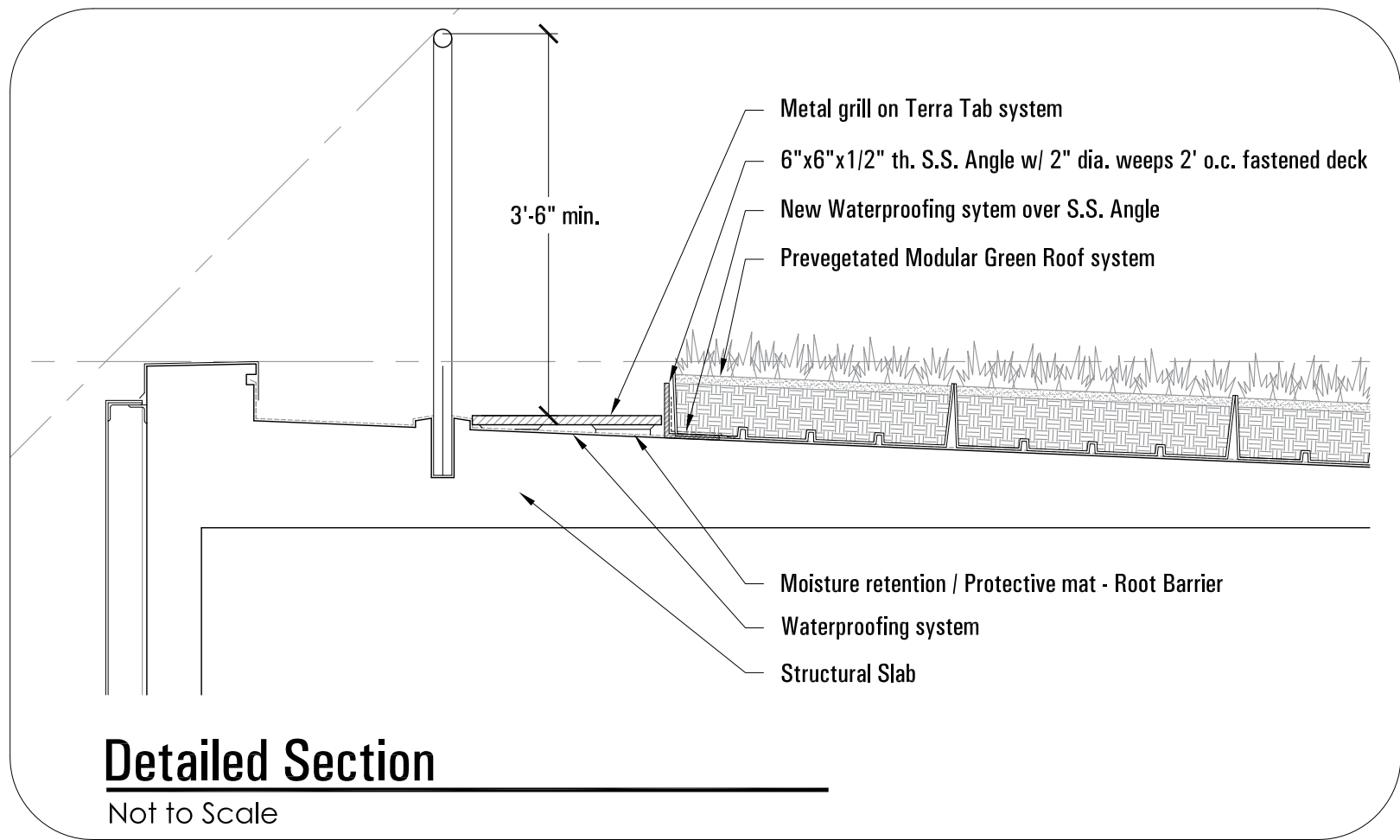
Scale: 1/16" = 1'-0"



Building Section

Scale: 1/16" = 1'-0"







LEED 2009 for Core and Shell Development

Project Checklist

Project Name

Date

17 5 4 Sustainable Sites Possible Points: 28

Y	?	N			
Y			Prereq 1	Construction Activity Pollution Prevention	
1			Credit 1	Site Selection	1
5			Credit 2	Development Density and Community Connectivity	5
1			Credit 3	Brownfield Redevelopment	1
6			Credit 4.1	Alternative Transportation—Public Transportation Access	6
	2		Credit 4.2	Alternative Transportation—Bicycle Storage and Changing Rooms	2
	3		Credit 4.3	Alternative Transportation—Low-Emitting and Fuel-Efficient Vehicles	3
		2	Credit 4.4	Alternative Transportation—Parking Capacity	2
		1	Credit 5.1	Site Development—Protect or Restore Habitat	1
1			Credit 5.2	Site Development—Maximize Open Space	1
			Credit 6.1	Stormwater Design—Quantity Control	1
			Credit 6.2	Stormwater Design—Quality Control	1
1			Credit 7.1	Heat Island Effect—Non-roof	1
1			Credit 7.2	Heat Island Effect—Roof	1
		1	Credit 8	Light Pollution Reduction	1
1			Credit 9	Tenant Design and Construction Guidelines	1

2 4 Water Efficiency Possible Points: 10

Y	?	N			
Y			Prereq 1	Water Use Reduction—20% Reduction	
2			Credit 1	Water Efficient Landscaping	2 to 4
	2		Credit 2	Innovative Wastewater Technologies	2
	2		Credit 3	Water Use Reduction	2 to 4

5 6 Energy and Atmosphere Possible Points: 37

Y	?	N			
Y			Prereq 1	Fundamental Commissioning of Building Energy Systems	
Y			Prereq 2	Minimum Energy Performance	
Y			Prereq 3	Fundamental Refrigerant Management	
3			Credit 1	Optimize Energy Performance	3 to 21
	4		Credit 2	On-Site Renewable Energy	4
	2		Credit 3	Enhanced Commissioning	2
			Credit 4	Enhanced Refrigerant Management	2
			Credit 5.1	Measurement and Verification—Base Building	3
			Credit 5.2	Measurement and Verification—Tenant Submetering	3
2			Credit 6	Green Power	2

6 1 1 Materials and Resources Possible Points: 13

Y	?	N			
Y			Prereq 1	Storage and Collection of Recyclables	
		1	Credit 1	Building Reuse—Maintain Existing Walls, Floors, and Roof	1 to 5
1			Credit 2	Construction Waste Management	1 to 2
	1		Credit 3	Materials Reuse	1
2			Credit 4	Recycled Content	1 to 2
2			Credit 5	Regional Materials	1 to 2
1			Credit 6	Certified Wood	1

6 2 Indoor Environmental Quality Possible Points: 12

Y	?	N			
Y			Prereq 1	Minimum Indoor Air Quality Performance	
Y			Prereq 2	Environmental Tobacco Smoke (ETS) Control	
			Credit 1	Outdoor Air Delivery Monitoring	1
			Credit 2	Increased Ventilation	1
1			Credit 3	Construction IAQ Management Plan—During Construction	1
1			Credit 4.1	Low-Emitting Materials—Adhesives and Sealants	1
1			Credit 4.2	Low-Emitting Materials—Paints and Coatings	1
1			Credit 4.3	Low-Emitting Materials—Flooring Systems	1
			Credit 4.4	Low-Emitting Materials—Composite Wood and Agrifiber Products	1
			Credit 5	Indoor Chemical and Pollutant Source Control	1
		1	Credit 6	Controllability of Systems—Thermal Comfort	1
		1	Credit 7	Thermal Comfort—Design	1
1			Credit 8.1	Daylight and Views—Daylight	1
1			Credit 8.2	Daylight and Views—Views	1

6 Innovation and Design Process Possible Points: 6

Y	?	N			
1			Credit 1.1	Innovation in Design: Specific Title	1
1			Credit 1.2	Innovation in Design: Specific Title	1
1			Credit 1.3	Innovation in Design: Specific Title	1
1			Credit 1.4	Innovation in Design: Specific Title	1
1			Credit 1.5	Innovation in Design: Specific Title	1
1			Credit 2	LEED Accredited Professional	1

Regional Priority Credits Possible Points: 4

			Credit 1.1	Regional Priority: Specific Credit	1
			Credit 1.2	Regional Priority: Specific Credit	1
			Credit 1.3	Regional Priority: Specific Credit	1
			Credit 1.4	Regional Priority: Specific Credit	1

42 16 7 Total Possible Points: 110

Certified 40 to 49 points Silver 50 to 59 points Gold 60 to 79 points Platinum 80 to 110