

MEDSTAR GEORGETOWN UNIVERSITY HOSPITAL

WASHINGTON , DC

FURTHER PROCESSING APPLICATION TO THE GEORGETOWN UNIVERSITY 2017-2036 CAMPUS PLAN

APRIL 18, 2017

APPLICANT

MEDSTAR GEORGETOWN UNIVERSITY HOSPITAL
ON BEHALF OF GEORGETOWN UNIVERSITY

DEVELOPER

TRAMMELL CROW COMPANY

ARCHITECT

HKS | SHALOM BARANES ASSOCIATES JV

CAMPUS PLANNER

DUMONT JANKS

TRAFFIC CONSULTANT

WELLS & ASSOCIATES

LANDSCAPE ARCHITECT

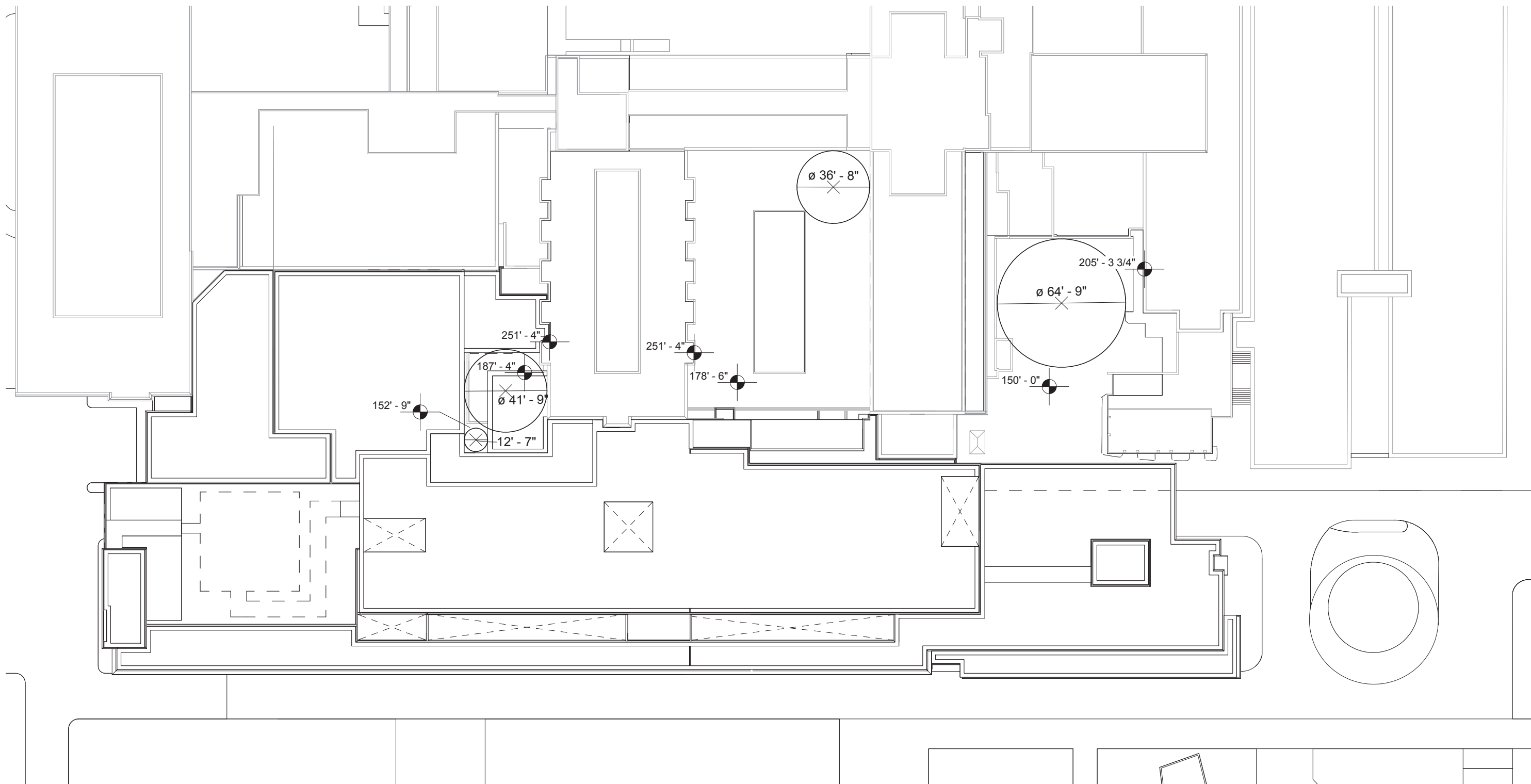
M. PAUL FRIEDBERG AND PARTNERS



DRAWING INDEX

No.	Title:
---	COVER SHEET
1.0	SECTION 1 - DEVELOPMENTAL DATA
1.1	DRAWING INDEX
1.2	COURT CALCULATIONS
1.3	ZONING TABULATION
2.0	SECTION 2 - CONTEXT
2.1	SITE AERIAL
2.2	SITE IMAGES
2.3	EXISTING BIRDS EYE VIEWS
2.4	SITE IMAGES
3.0	SECTION 3 - SITE CIRCULATION
3.1	EXISTING SITE PLAN
3.2	PROPOSED SITE PLAN
3.3	EXISTING SITE CIRCULATION
3.4	PROPOSED SITE CIRCULATION
4.0	SECTION 4 - FORECOURT / COURTYARD
4.1	NORTH DISTRICT OVERALL PLAN - EXISTING
4.2	NORTH DISTRICT OVERALL PLAN - PROPOSED
5.0	SECTION 5 - SURGICAL PAVILION
5.1	PERSPECTIVE VIEW - MASSING (AERIAL FROM NORTHEAST)
5.2	PERSPECTIVE VIEWS - MASSING (NORTHEAST)
5.3	PERSPECTIVE VIEWS - MASSING (NORTH & NORTHWEST)
5.4	PERSPECTIVE VIEW - MASSING (SOUTHEAST)
5.5	EAST ELEVATION
5.6	NORTH ELEVATION
5.7	WEST & SOUTH ELEVATIONS
5.8	STACKED FLOOR PLAN DIAGRAM
5.9	FLOOR PLANS (P3 - P1 LEVELS)
5.10	FLOOR PLANS (GROUND - LEVEL 2)
5.11	FLOOR PLANS (LEVEL 3 - PENTHOUSE)
5.12	ENLARGED PLAN - PH LEVEL
5.13	ENLARGED PENTHOUSE PLAN (HELIPAD)
5.14	MECHANICAL PH PLAN
5.15	CAMPUS GREEN SECTIONS
6.0	SECTION 6 - RETAINING WALL
6.1	RETAINING WALL CONCEPT PLAN AND PROFILE





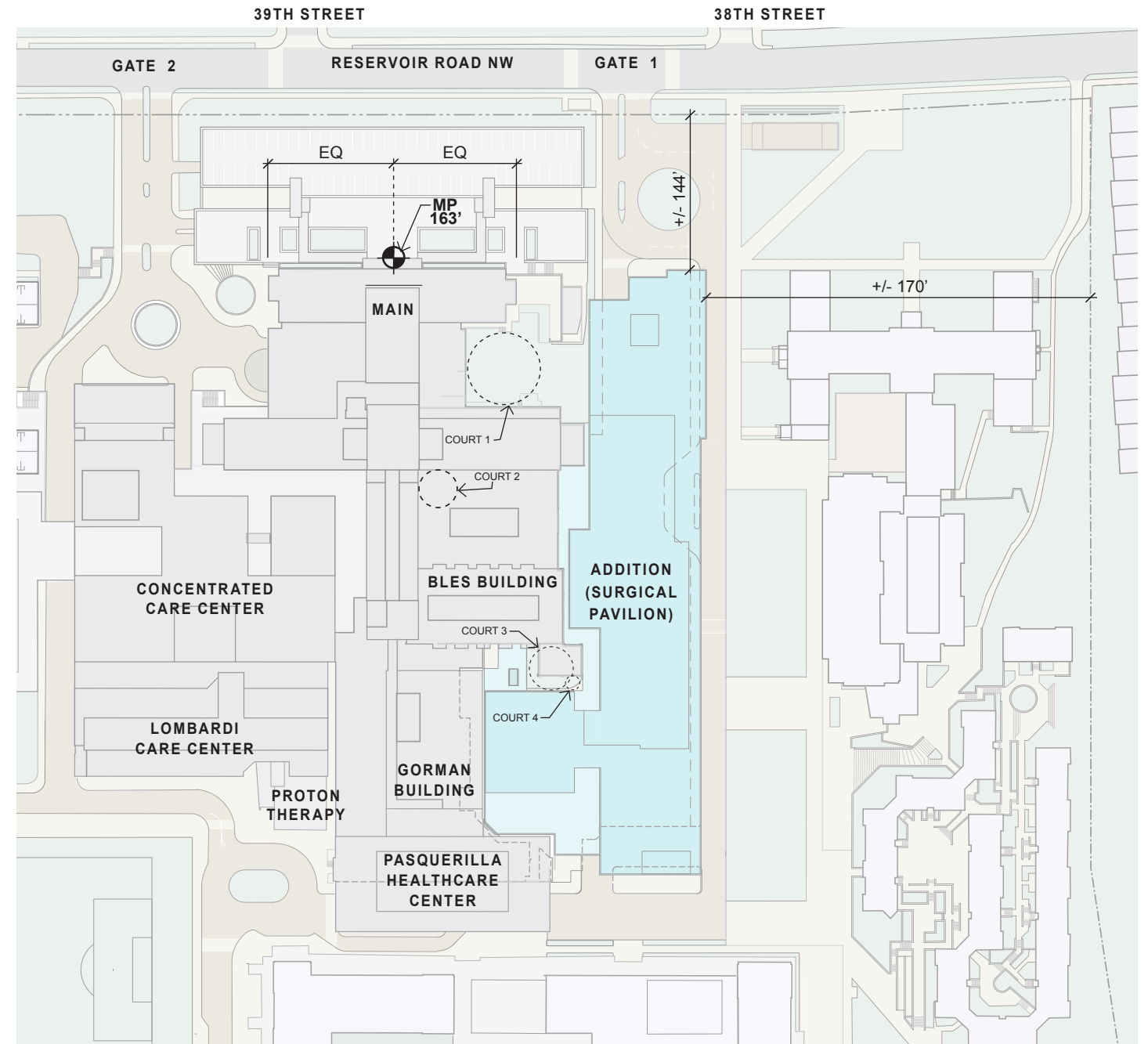
ZONING TABULATION

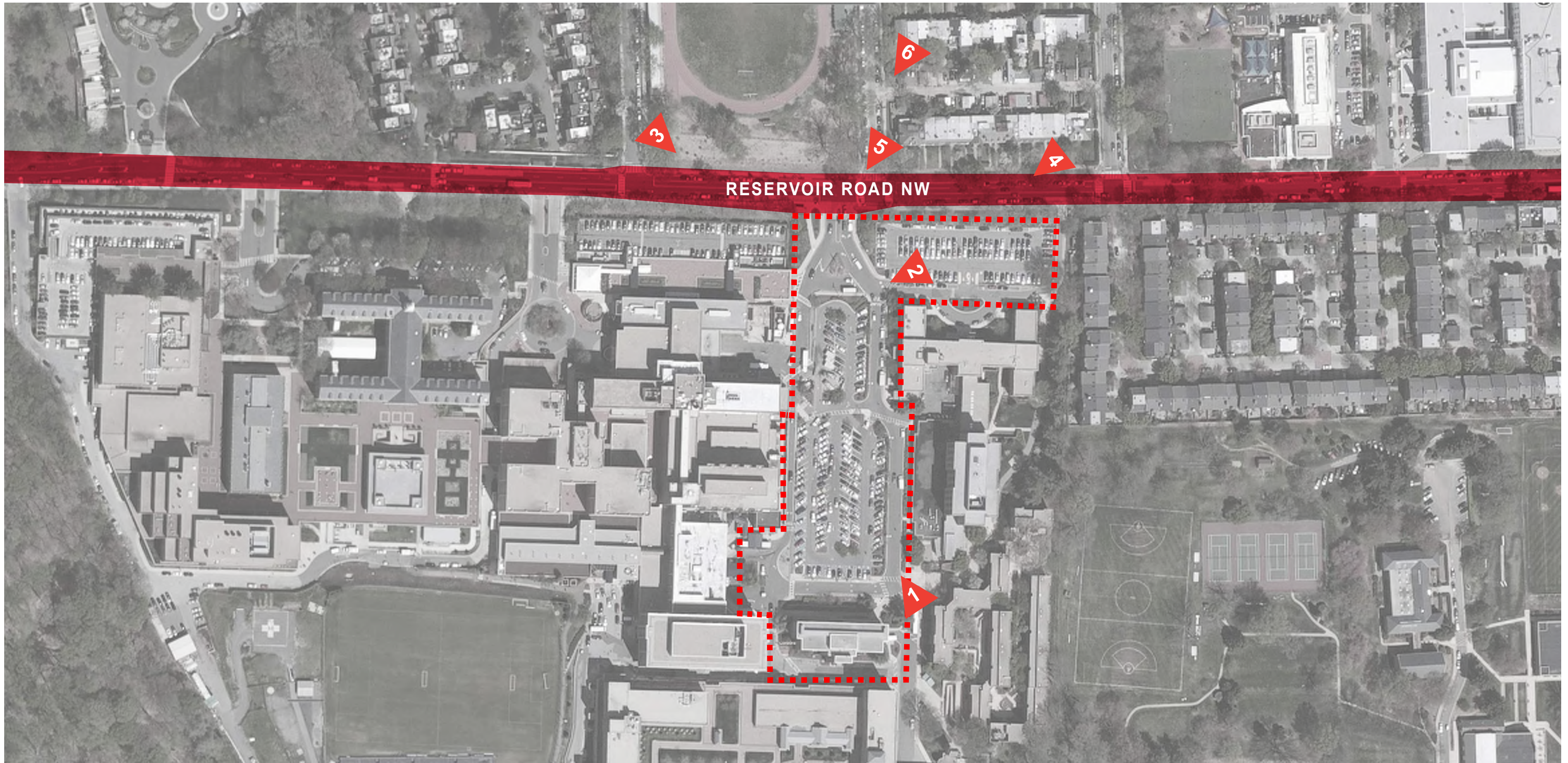
ZONING DISTRICT: R-3
SQUARE: 1321
LOTS: 824, 825, 826, 833

GROSS FLOOR AREA: 450,000 SF (MAXIMUM)
LOT OCCUPANCY: 90,000 SF (MAXIMUM)
HEIGHT: 90' (MAXIMUM) - Per the 1910 Height Act
STORIES: 6
PENTHOUSE HEIGHT: 18'-6" (MAXIMUM)
PENTHOUSE AREA: 31,000 SF (MAXIMUM)
PARKING: +/- 644 SPACES
LOADING: 3 BERTHS @ 12' x 55'
 2 BERTHS @ 12' x 30'
 5 DELIVERY SPACES @ 10' x 20'

COURTS:	COURT # (TYPE)	HEIGHT	WIDTH		AREA	
			MIN REQ'D	PROVIDED	MIN REQ'D	PROVIDED
	# 1 (OPEN)	55' - 3"	12' - 0"	64' - 9"	N/A	N/A
	# 2 (CLOSED)	72' - 10"	15' - 2"	36' - 8"	460 SF	9,400 SF
	# 3 (CLOSED)	64' - 0"	13' - 4"	41' - 9"	356 SF	2,153 SF
	# 4 (CLOSED)	34' - 7"	12' - 0"	12' - 7"	288 SF	946 SF

- NOTES:**
- ZONING TABULATIONS CONFORM TO THE GEORGETOWN UNIVERSITY 2017-2036 CAMPUS PLAN.
 - THE NUMBER OF PARKING SPACES IS WITHIN THE 2,700 SPACES ALLOCATED TO MGUH OF THE TOTAL 4,080 PARKING SPACES ON CAMPUS (NO CHANGE TO THE NUMBER OF SPACES ON CAMPUS IS PROPOSED).
 - PARKING SPACES WILL CONFORM WITH ZONING REQUIREMENTS:
 - STANDARD: 9' x 18'
 - COMPACT: 8' x 16'
 - BICYCLE: 2' x 6'
 - THE NUMBER OF COMPACT SPACES WILL NOT EXCEED ZONING MAXIMUM OF 40% OF THE TOTAL NUMBER OF SPACES PROVIDED.
 - DRIVE AISLES WILL BE 20' WIDE WHERE REQUIRED BY CODE.
 - BICYCLE PARKING SPACES WILL BE PROVIDED IN CONFORMANCE WITH ZONING, LEED CERTIFICATION, AND OTHER REGULATORY REQUIREMENTS.
 - LOADING BERTHS, PLATFORMS, AND SERVICE DELIVERY SPACES WILL CONFORM WITH ZONING REQUIREMENTS, AND BE LOCATED ON THE FIRST LEVEL BELOW GRADE.







1. VIEW FROM HENLE VILLAGE



2. VIEW FROM ST MARY'S HALL



3. VIEW FROM RESERVOIR RD & 39TH ST



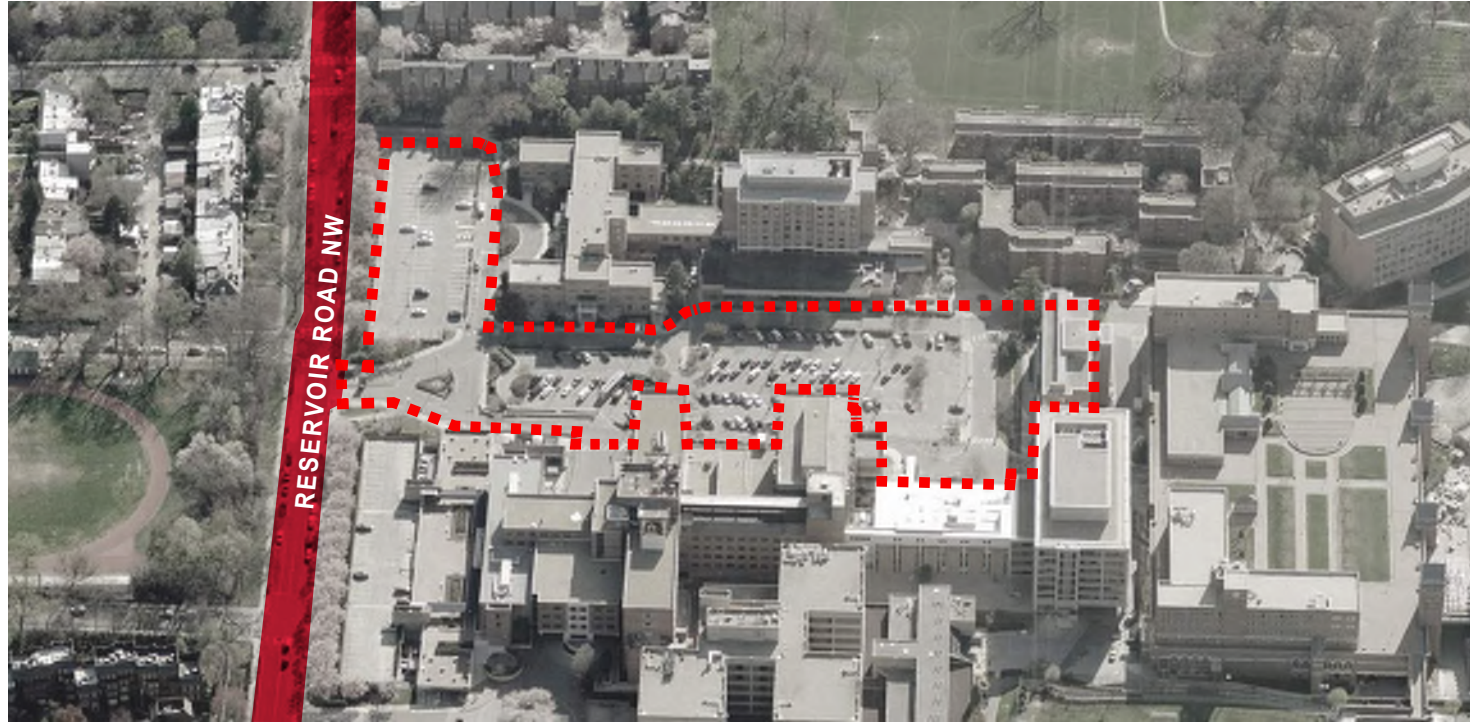
4. VIEW FROM RESERVOIR RD & 37TH ST



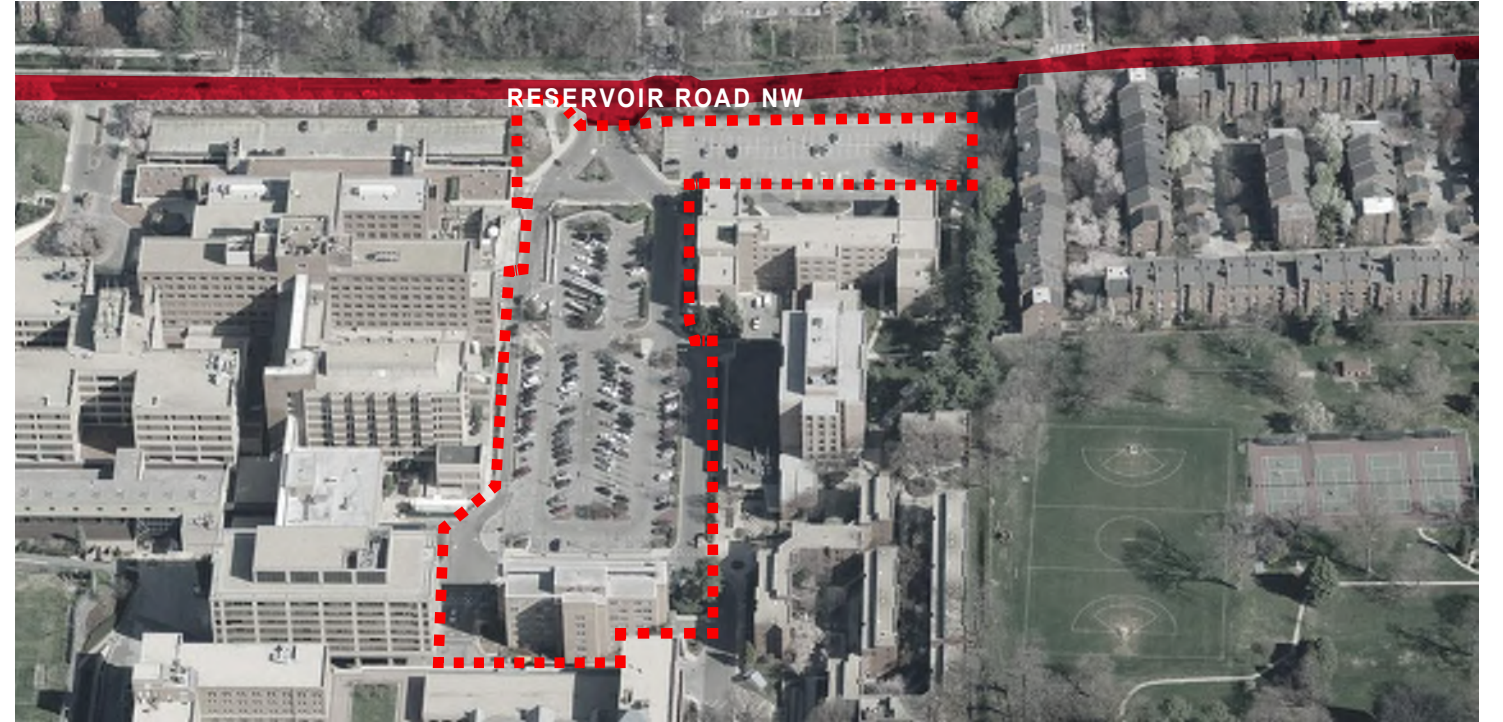
5. VIEW FROM RESERVOIR RD & 38TH ST



6. VIEW FROM 38TH ST



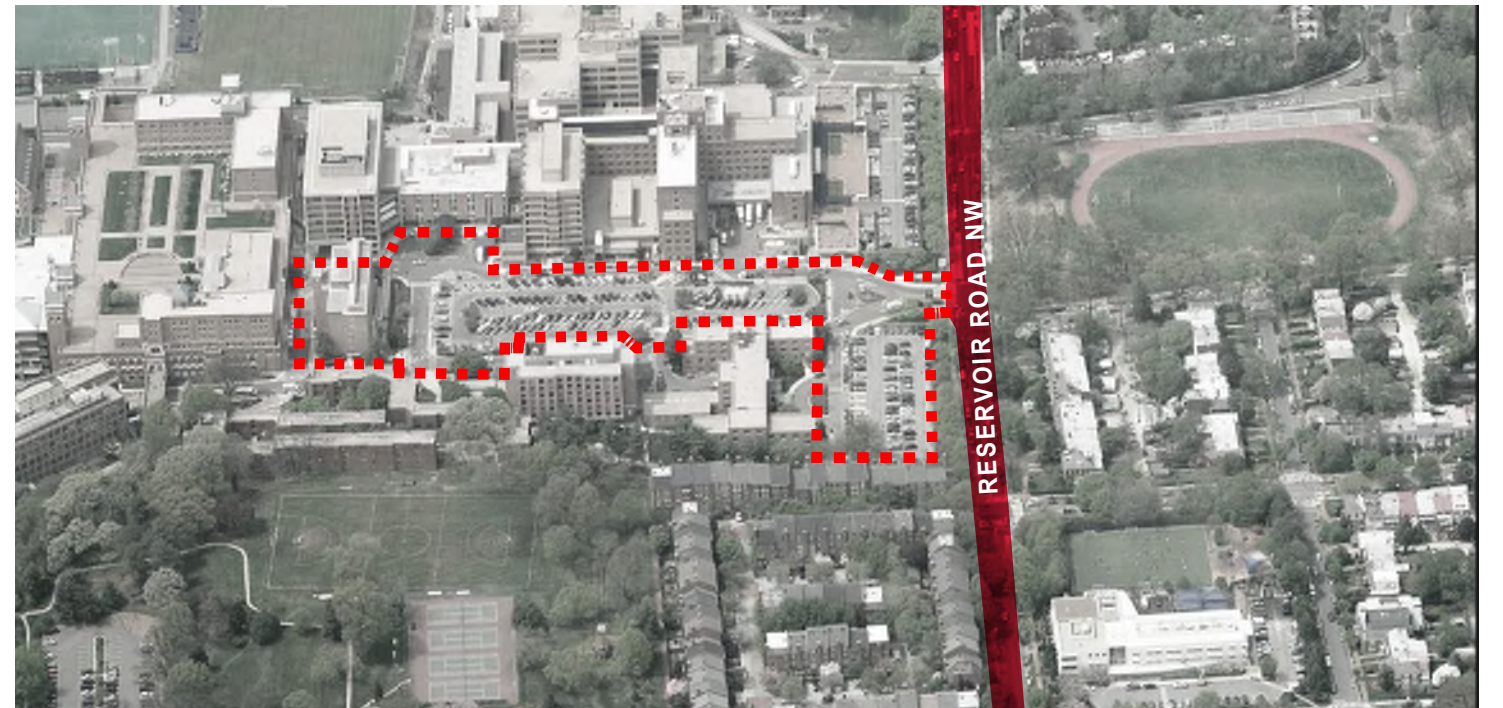
1. VIEW LOOKING EAST



2. VIEW LOOKING NORTH



3. VIEW LOOKING SOUTH



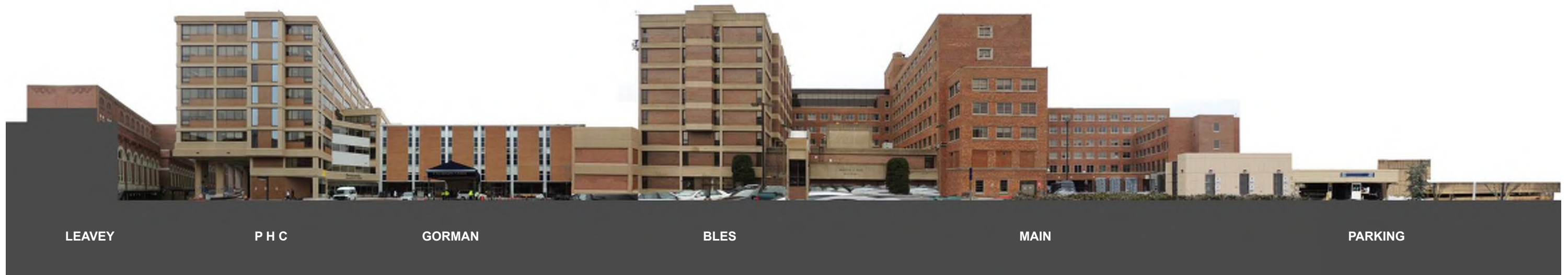
4. VIEW LOOKING WEST



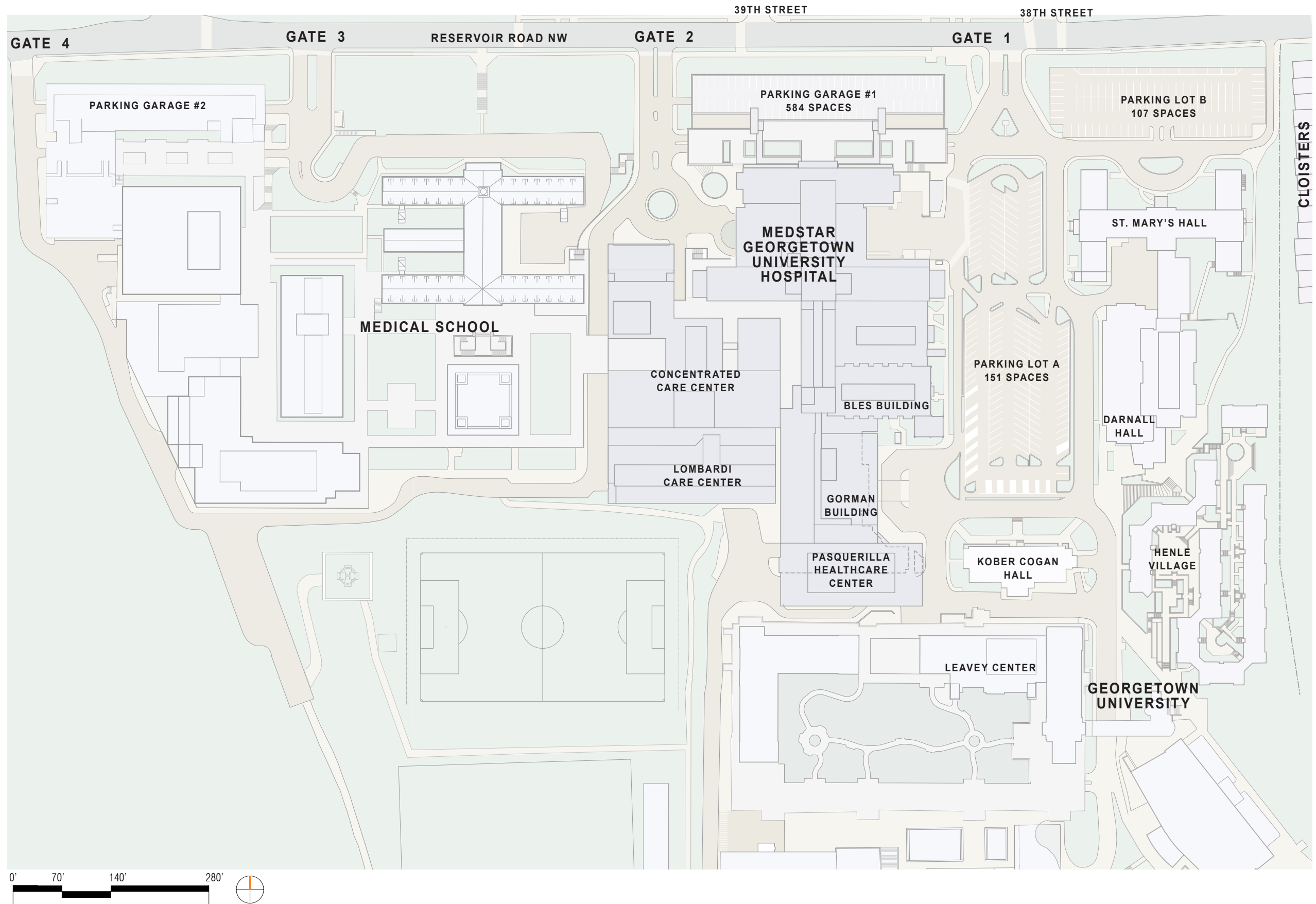
1. VIEW, LOOKING SOUTH

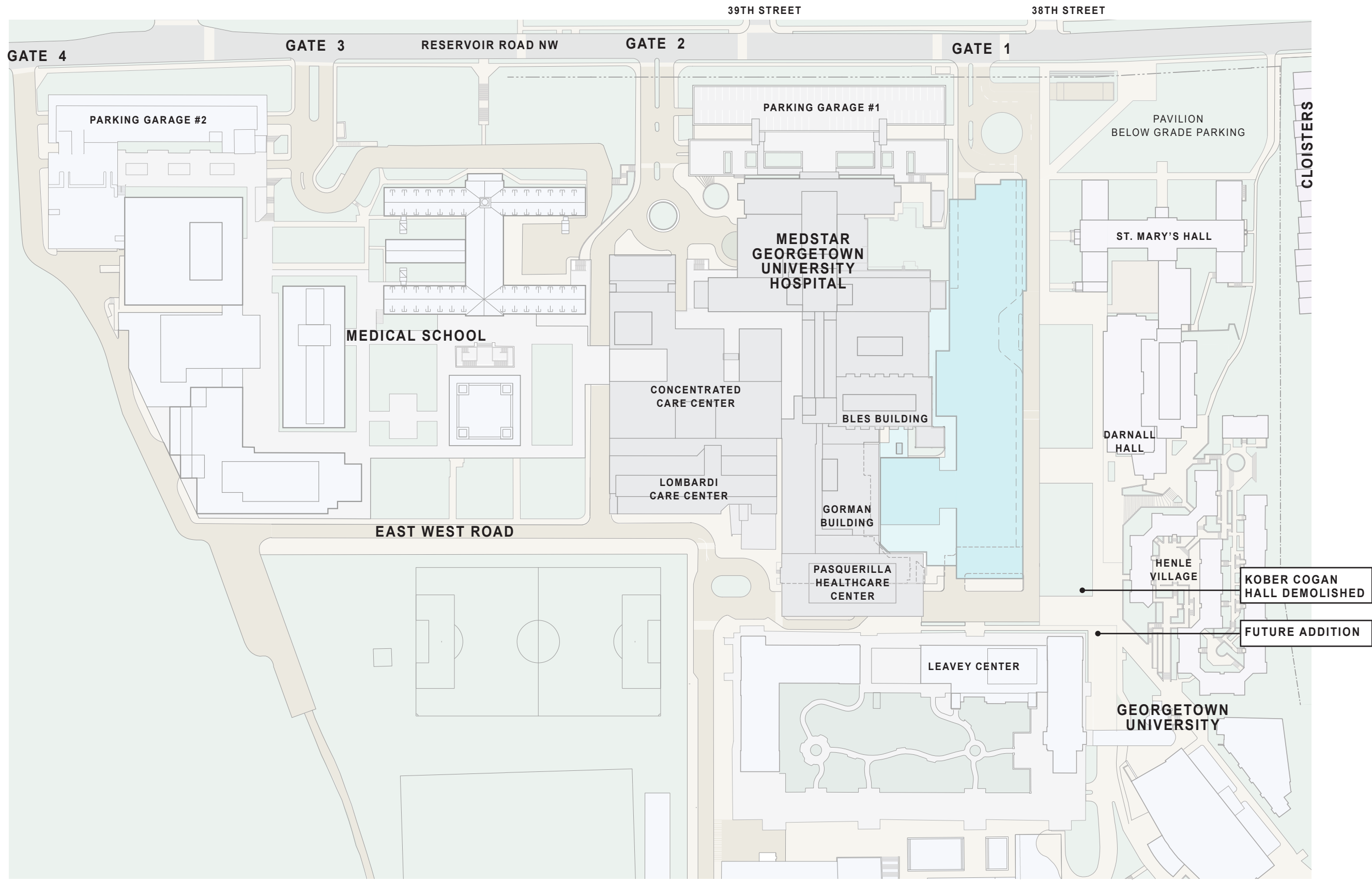


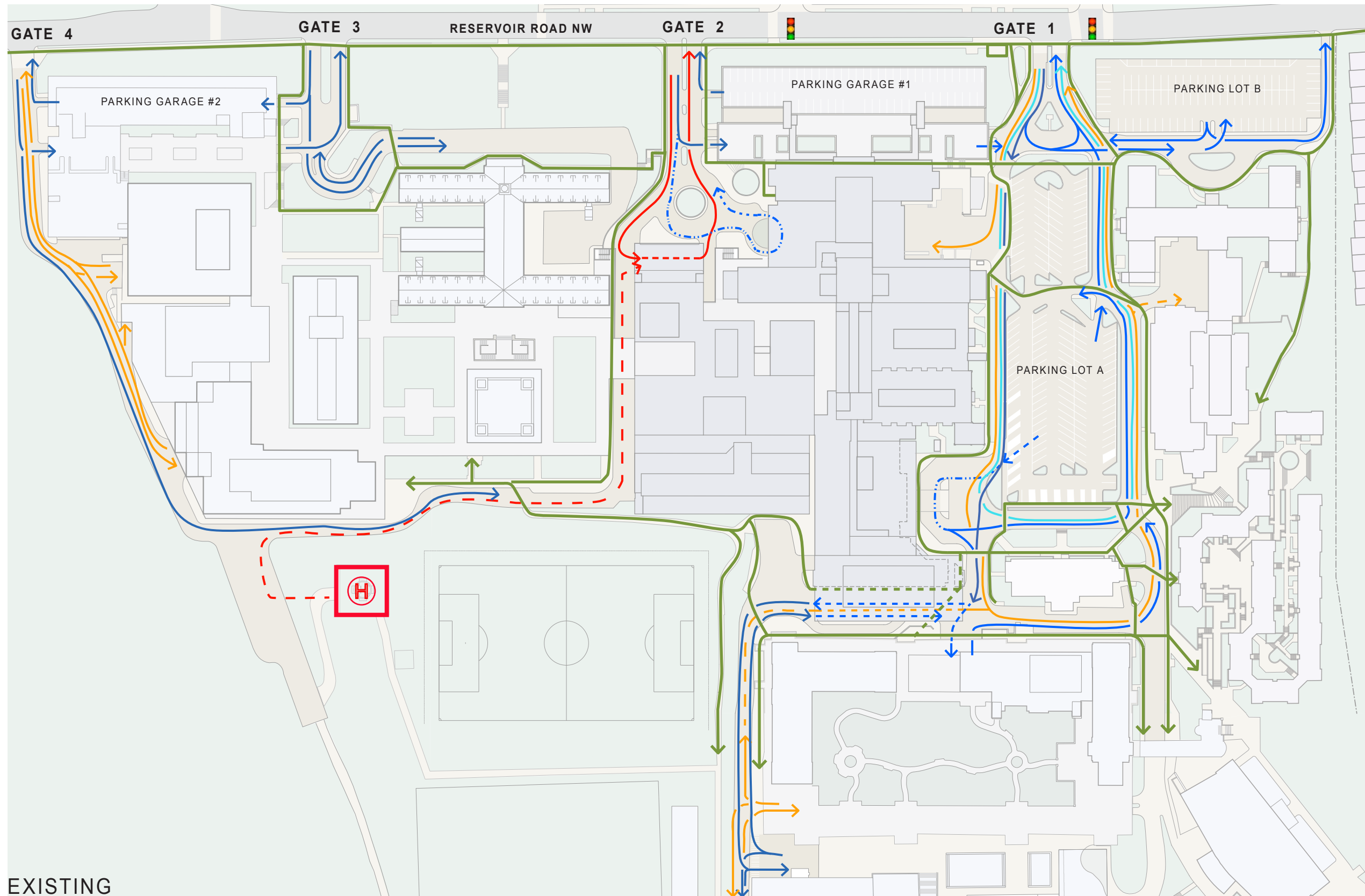
2. VIEW, LOOKING NORTH



3. VIEW, LOOKING WEST







EXISTING

PEDESTRIAN

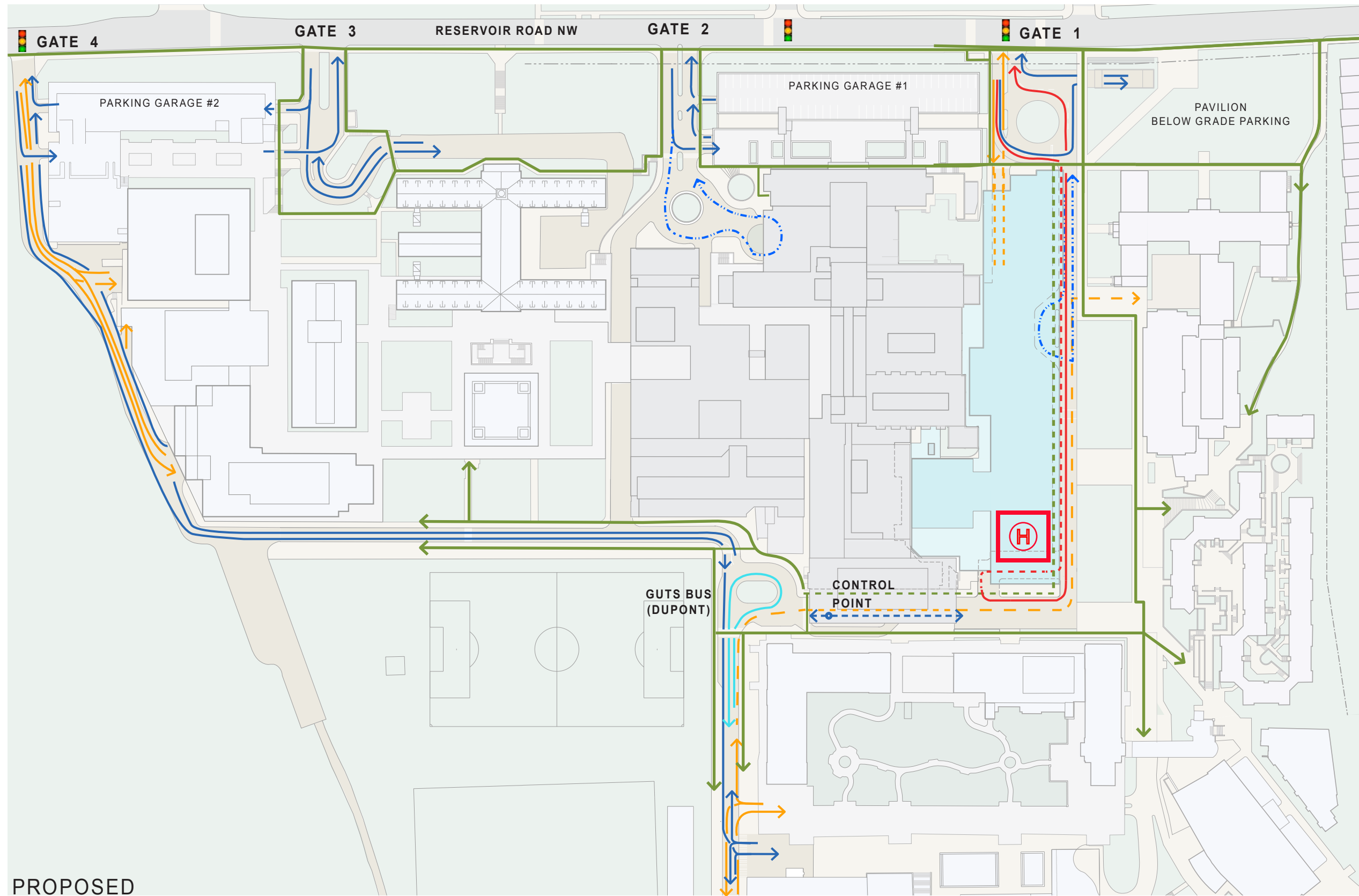
PARKING

DROP OFF

GUTS BUS

SERVICE

AMBULANCE



PROPOSED

PEDESTRIAN

PARKING

DROP OFF

GUTS BUS

SERVICE

AMBULANCE



IMAGE COURTESY OF GEORGETOWN UNIVERSITY AND DUMONT JANKS



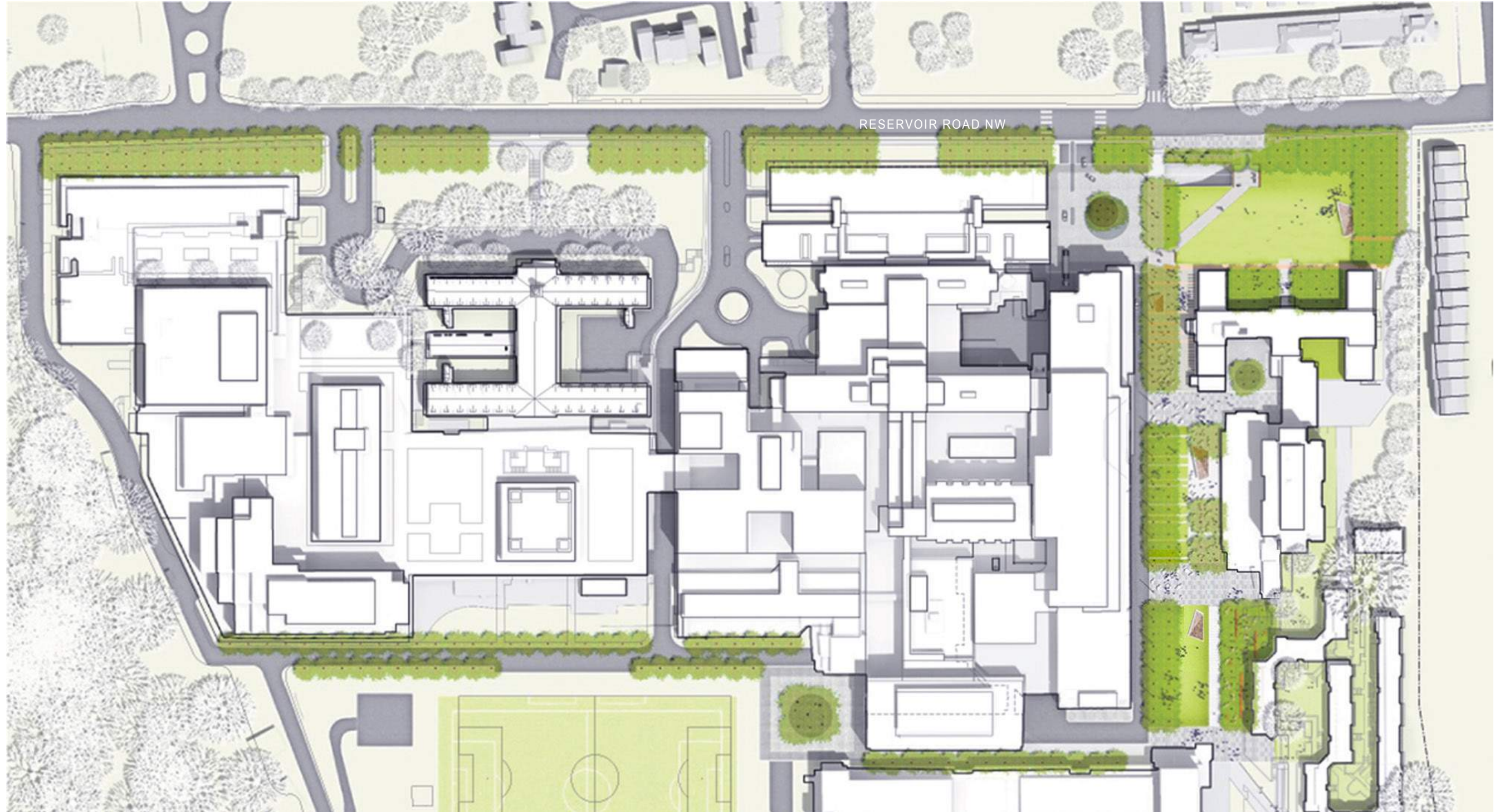


IMAGE COURTESY OF GEORGETOWN UNIVERSITY AND DUMONT JANKS





AERIAL VIEW FROM NORTH EAST



VIEW LOOKING AT NORTH EAST CORNER



RESERVOIR ROAD VIEW LOOKING AT NORTH EAST CORNER



VIEW LOOKING AT NORTH WEST CORNER



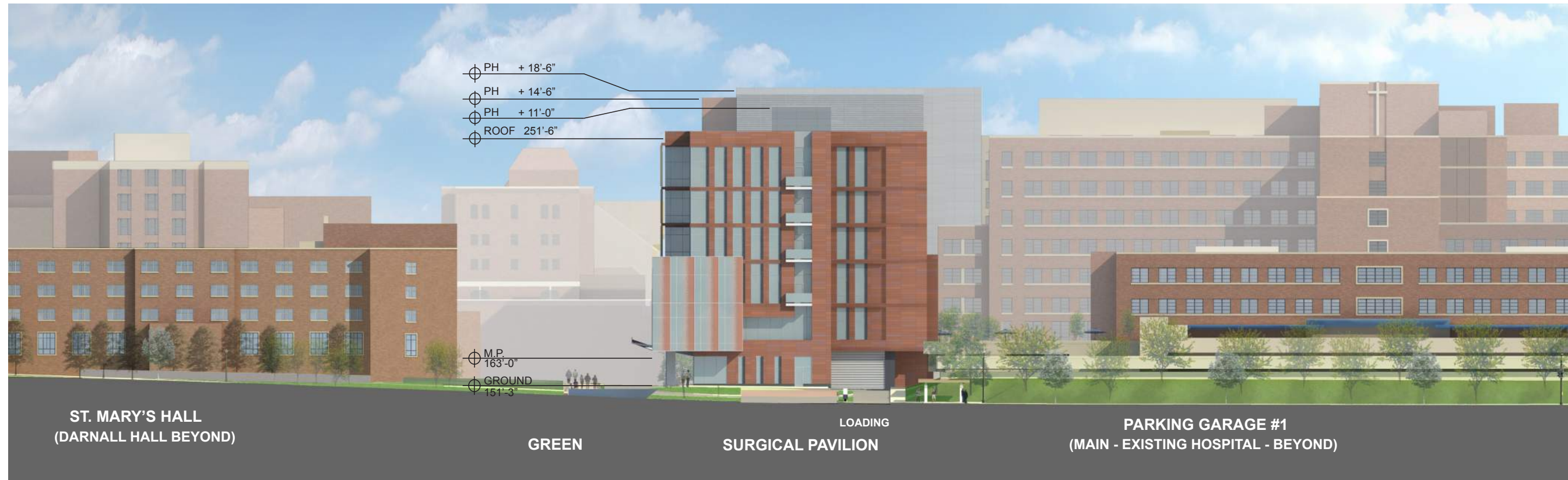
VIEW FROM RESERVOIR ROAD LOOKING AT NORTH ELEVATION



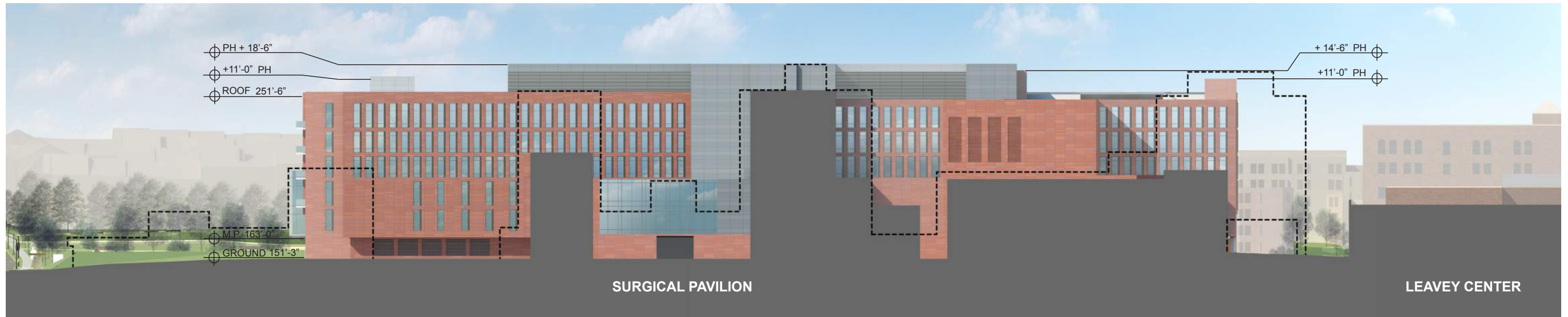
VIEW LOOKING AT SOUTH EAST CORNER



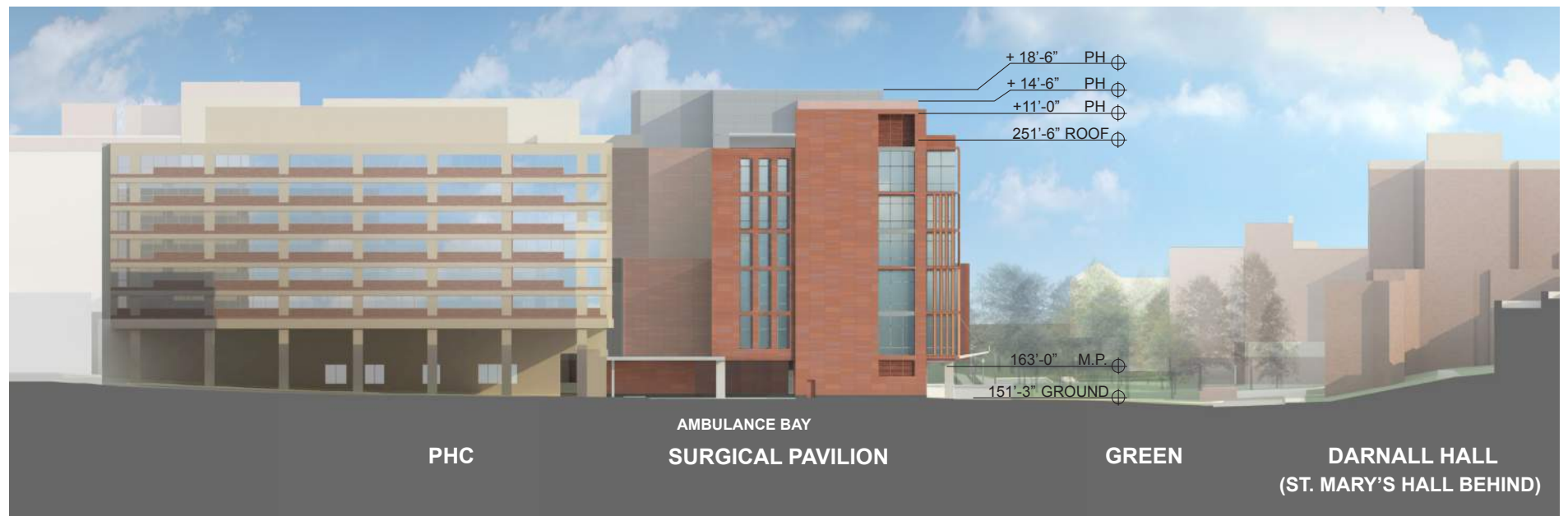
EAST ELEVATION



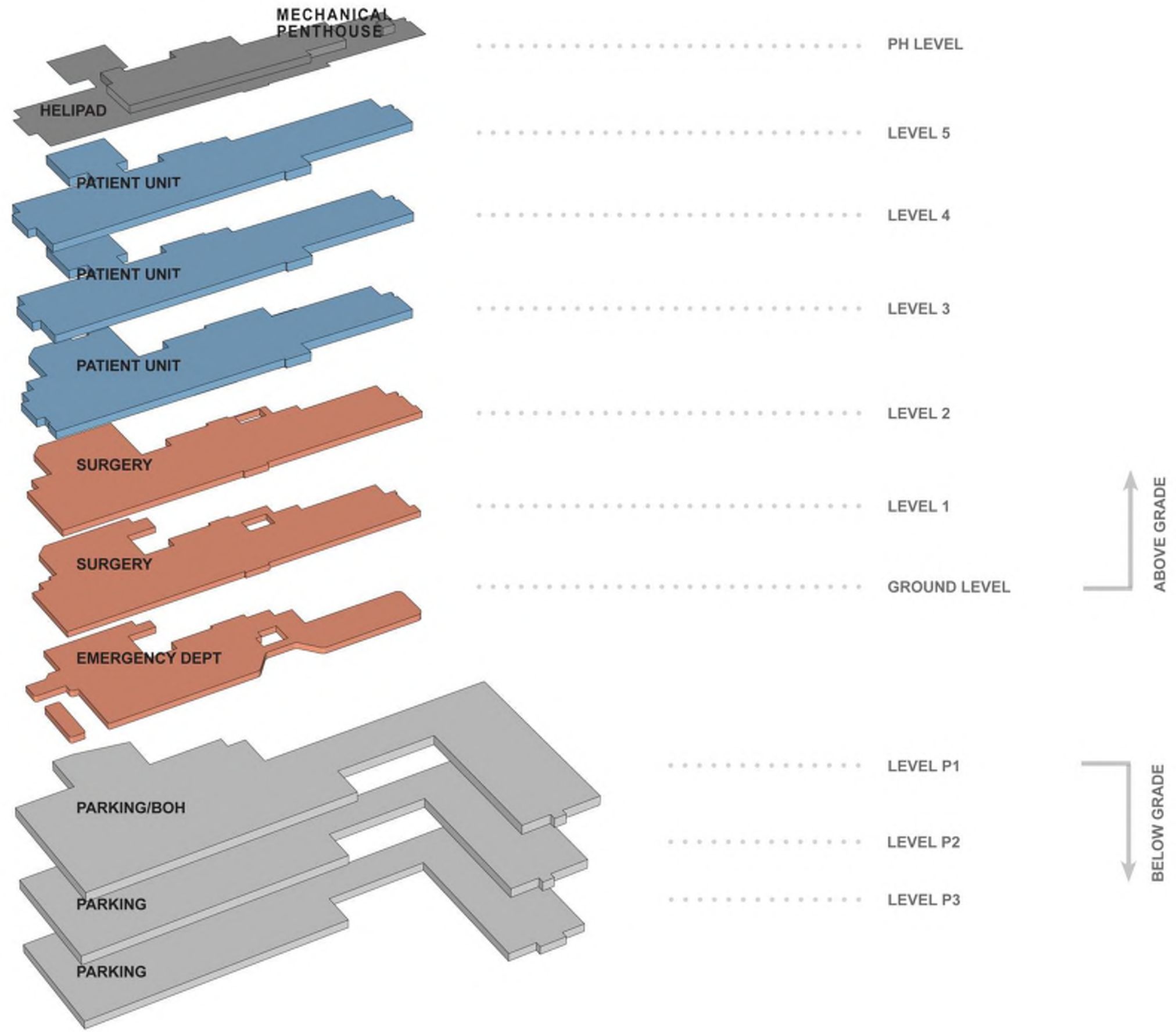
NORTH ELEVATION

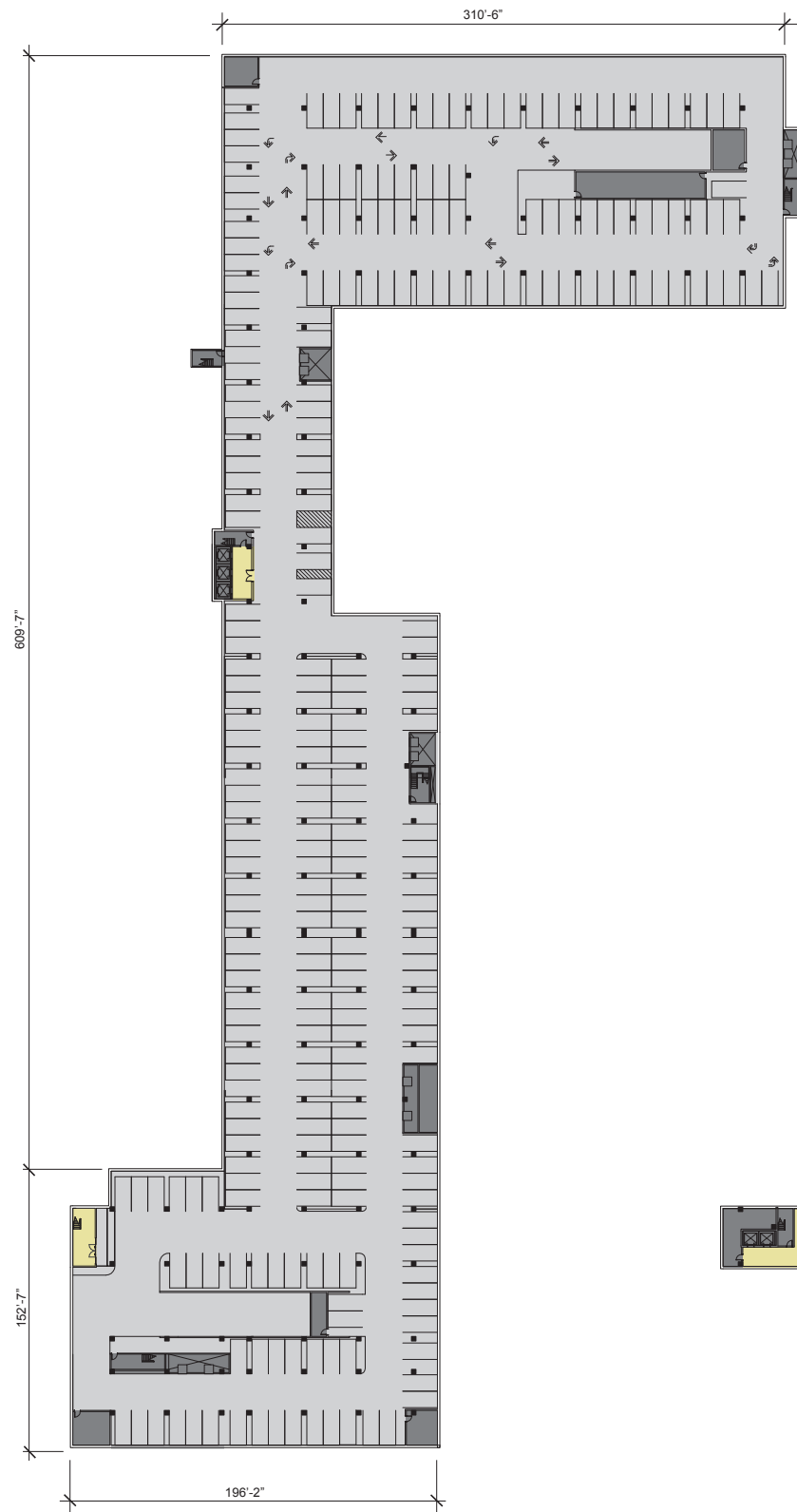


WEST ELEVATION

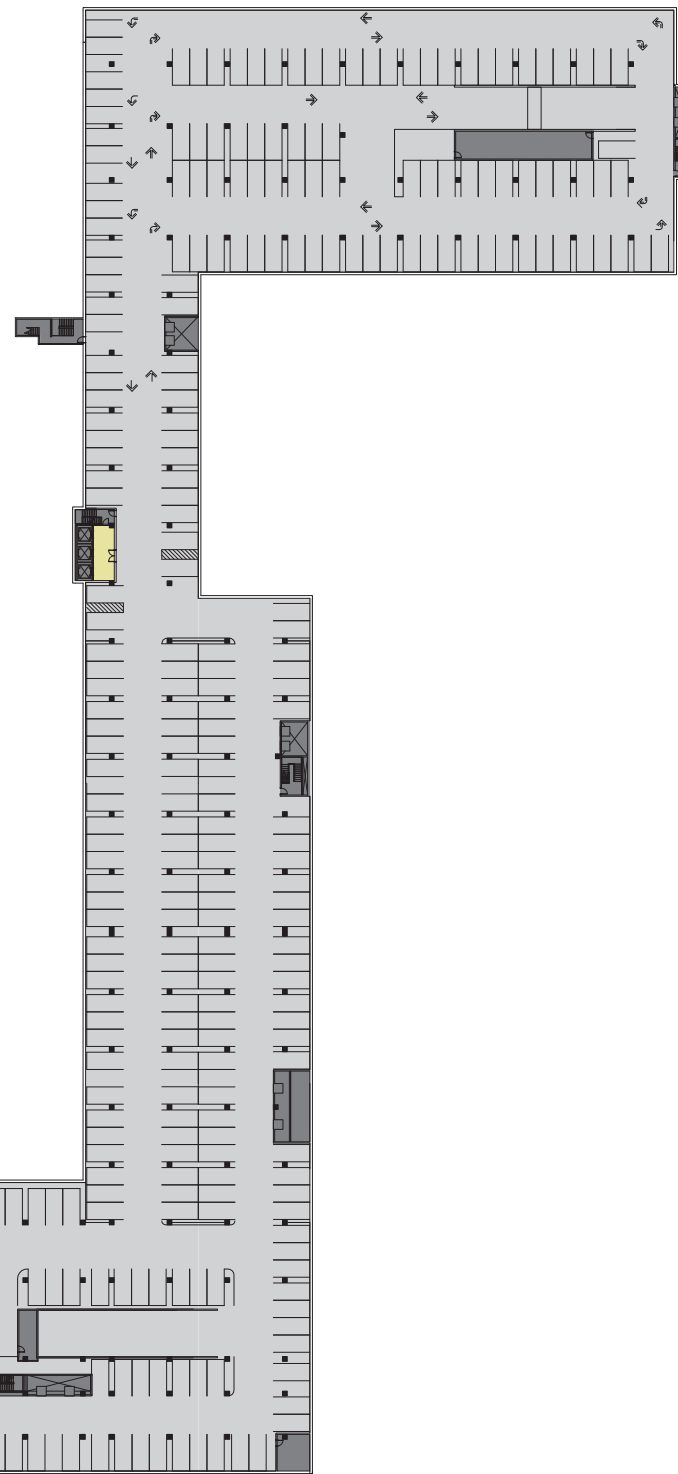


SOUTH ELEVATION

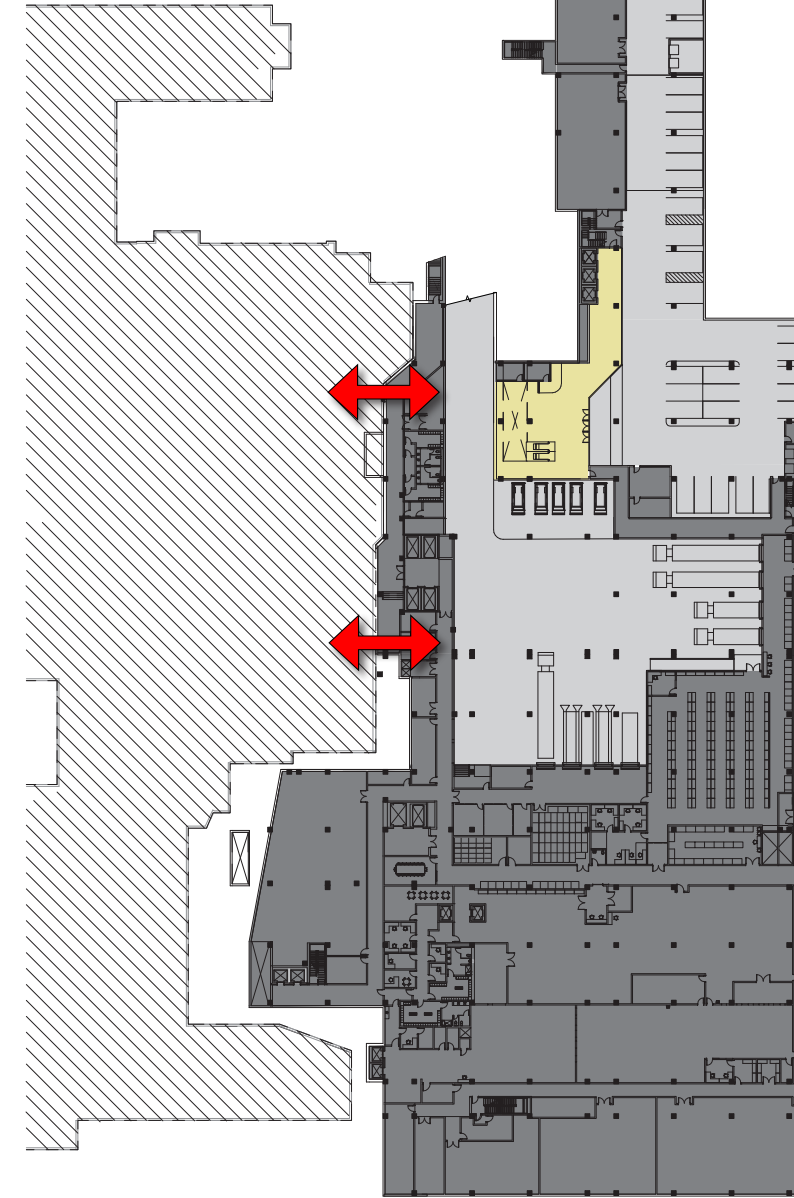




LEVEL P3



LEVEL P2



LEVEL P1

LEGEND

- PARKING/LOADING
- BOH / MECHANICAL
- PUBLIC

CONNECTION TO EXISTING



Notes:

1: The interior plan layouts are schematic, and shown for illustrative purposes only. Final layouts may vary.



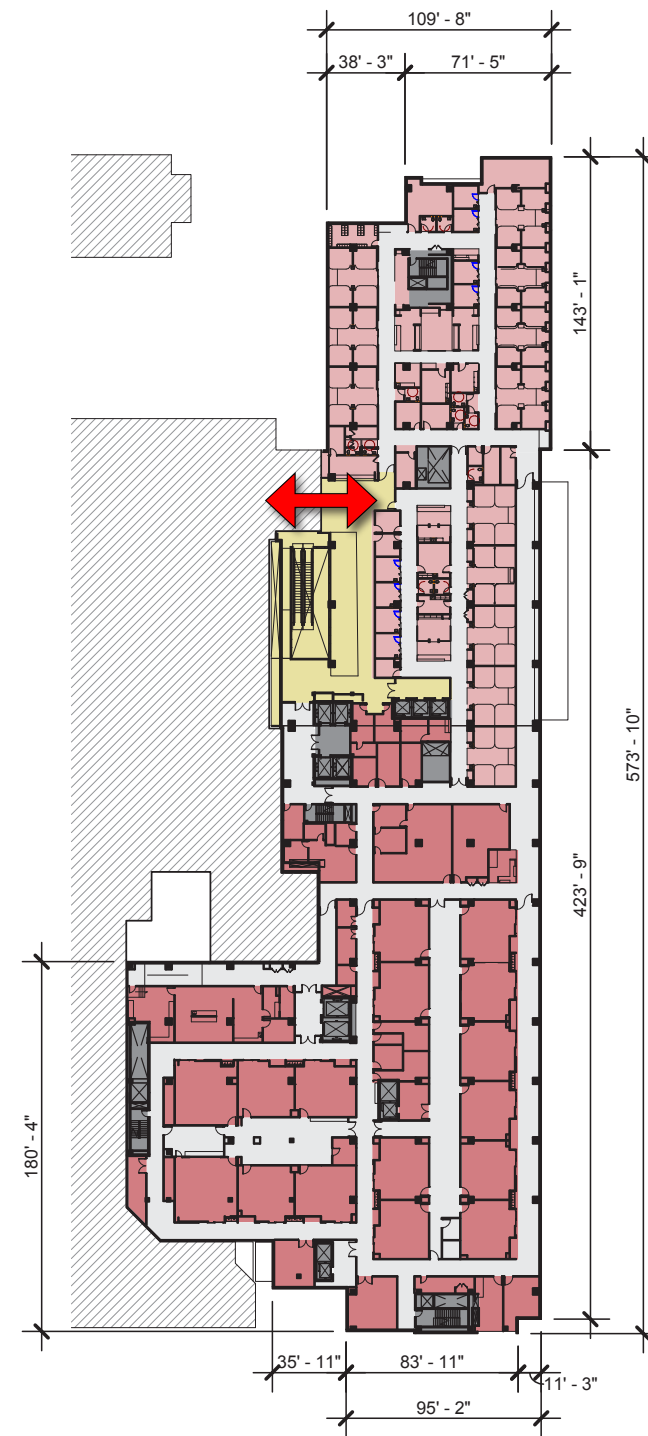
SURGICAL PAVILION

WASHINGTON, DC

FLOOR PLAN LEVEL P3-P1 | 5.9



GROUND LEVEL



LEVEL 01



LEVEL 02



Notes:

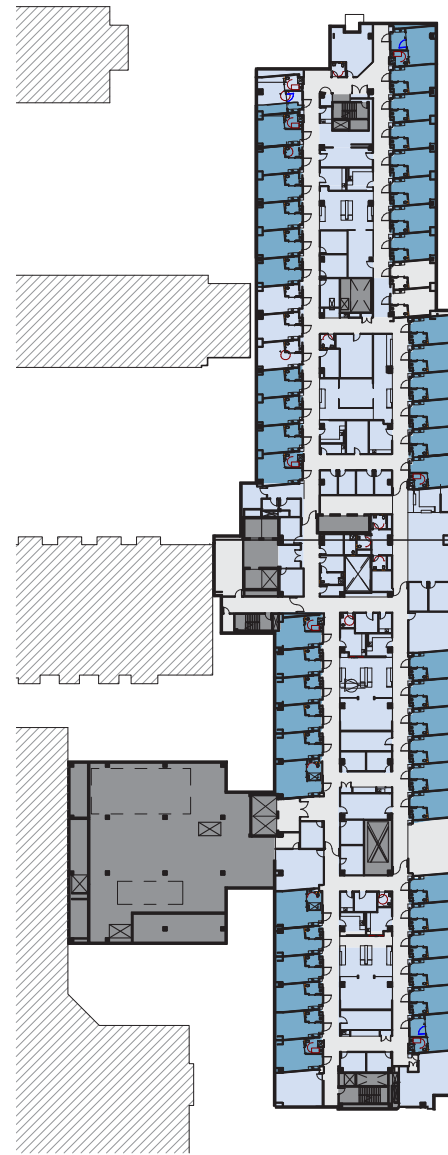
1: The interior plan layouts are schematic, and shown for illustrative purposes only. Final layouts may vary.

LEGEND

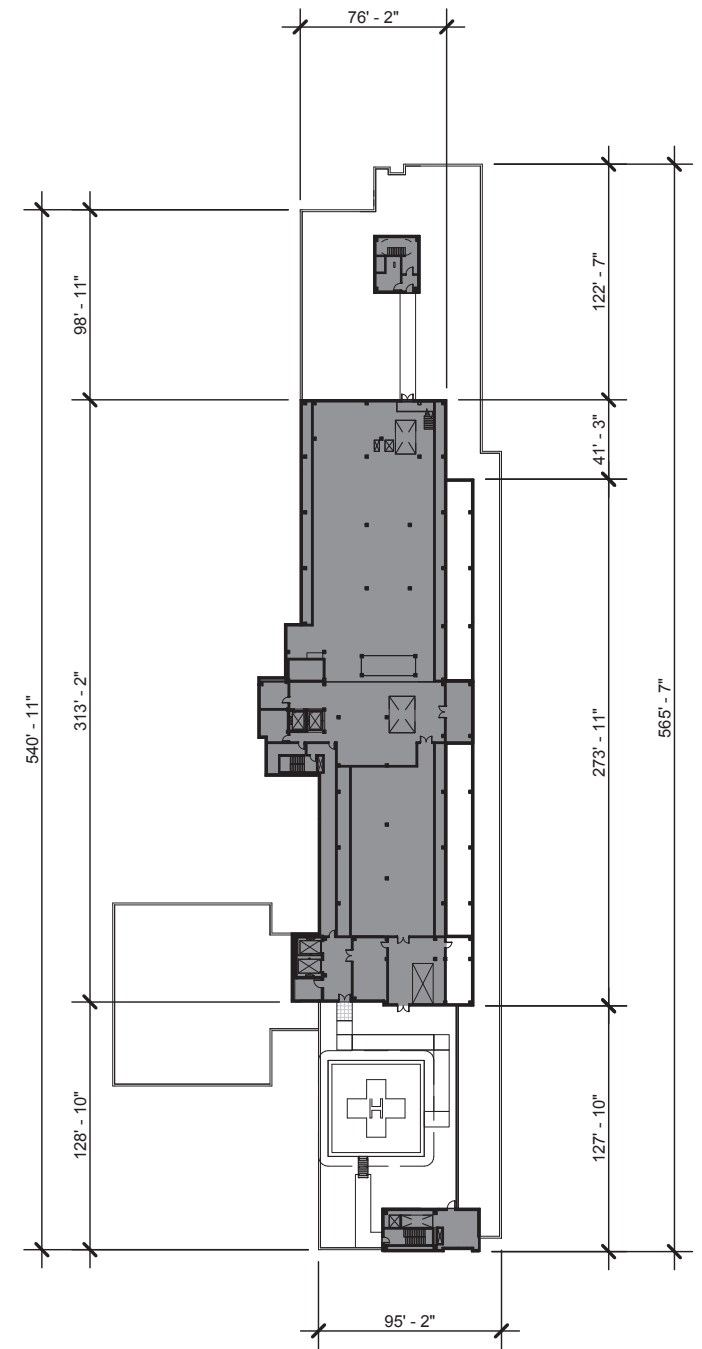
- PATIENT ROOM/ RECOVERY
- EXAM/SURGERY
- MECHANICAL/ CIRCULATION
- PUBLIC
- CONNECTION TO EXISTING



LEVEL 03



LEVEL 04
LEVEL 05 SIM



PH LEVEL - REFER TO 5.12

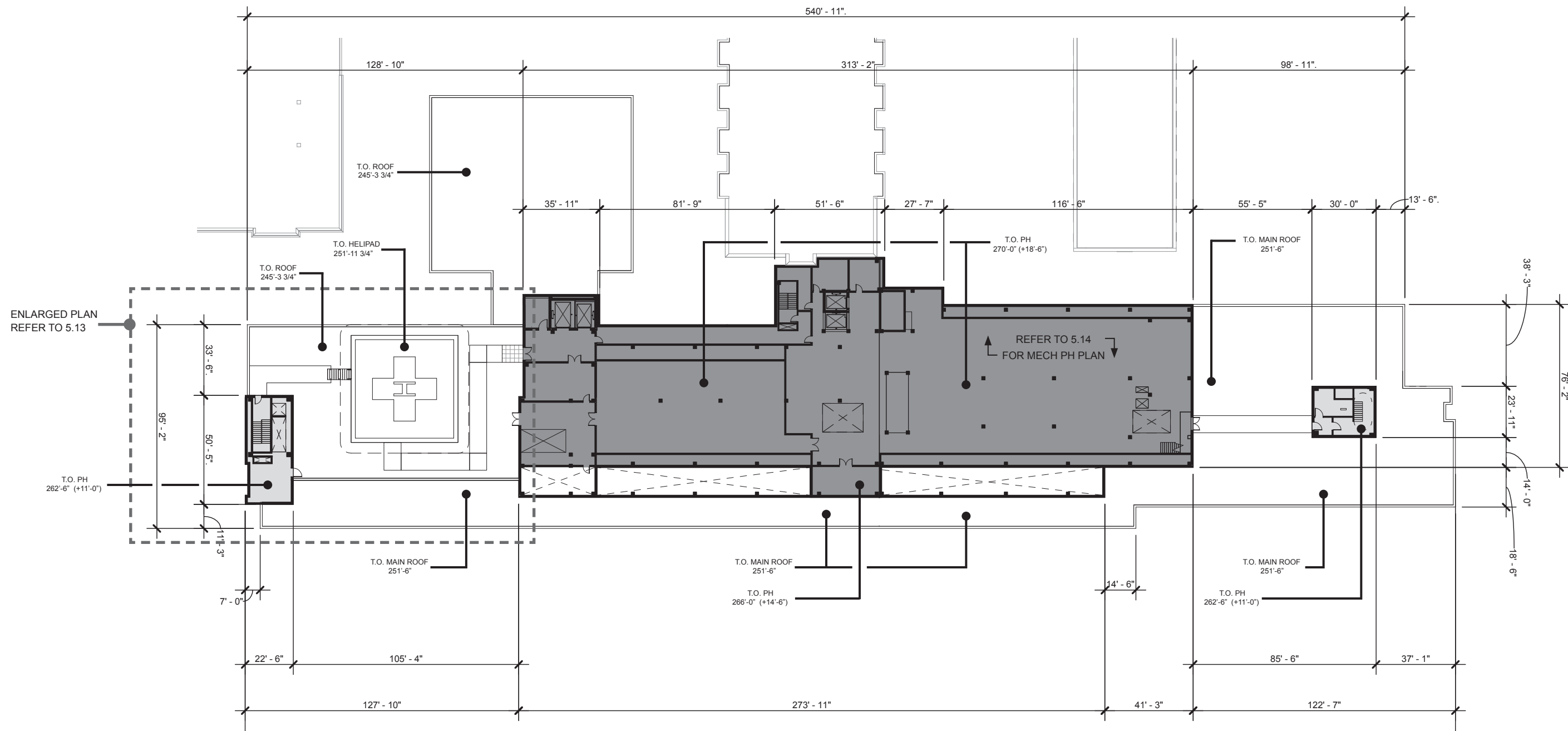


Notes:

1: The interior plan layouts are schematic, and shown for illustrative purposes only. Final layouts may vary.

LEGEND

- PATIENT ROOM
- PATIENT SUPPORT
- MECHANICAL/CIRCULATION
- PUBLIC
- CONNECTION TO EXISTING



Notes:
 1: The interior plan layouts are schematic, and shown for illustrative purposes only. Final layouts may vary.

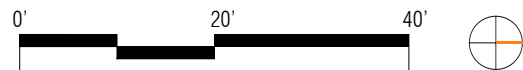
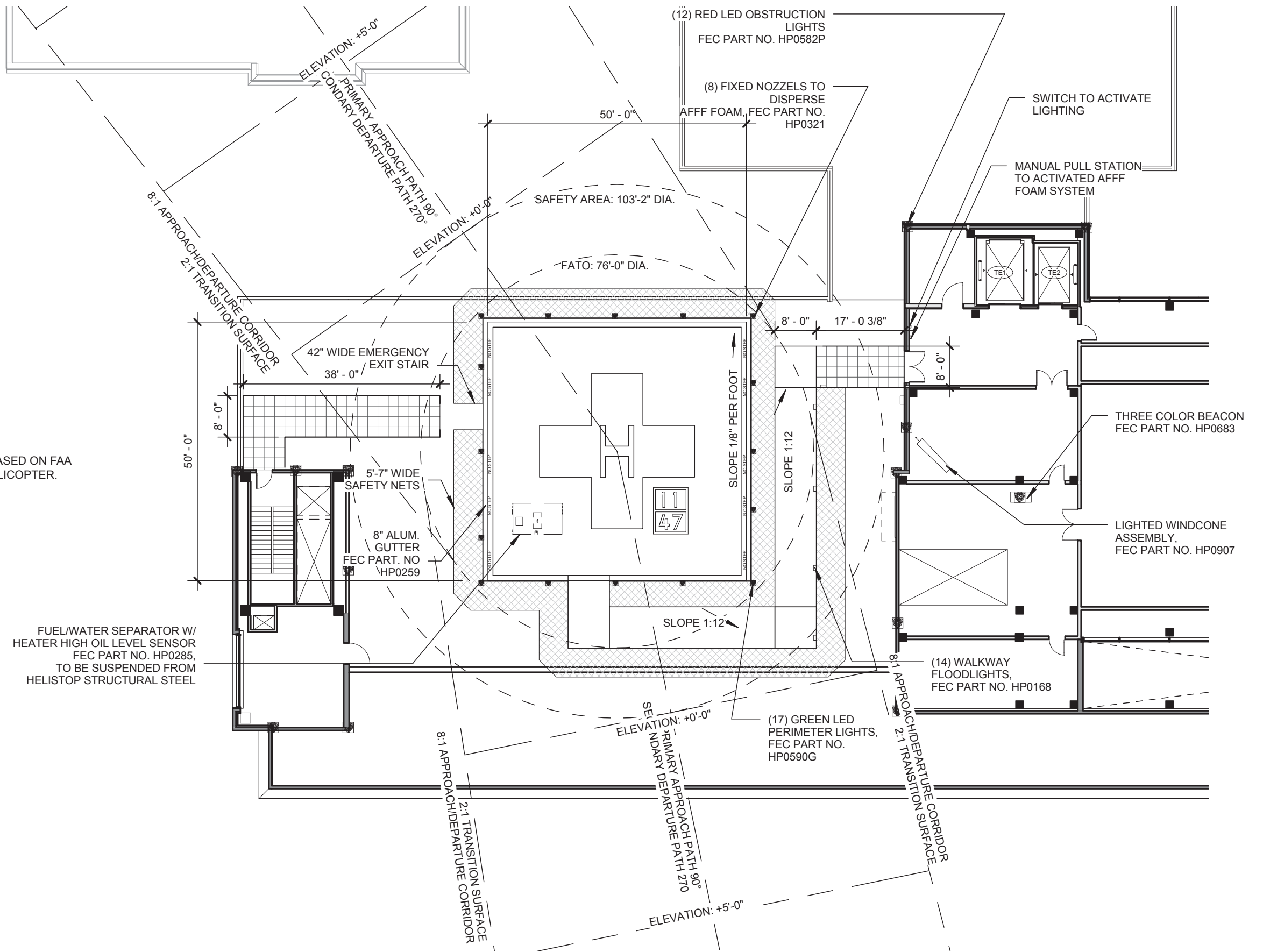
NOTES:

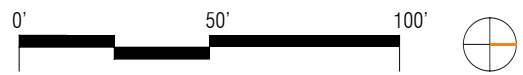
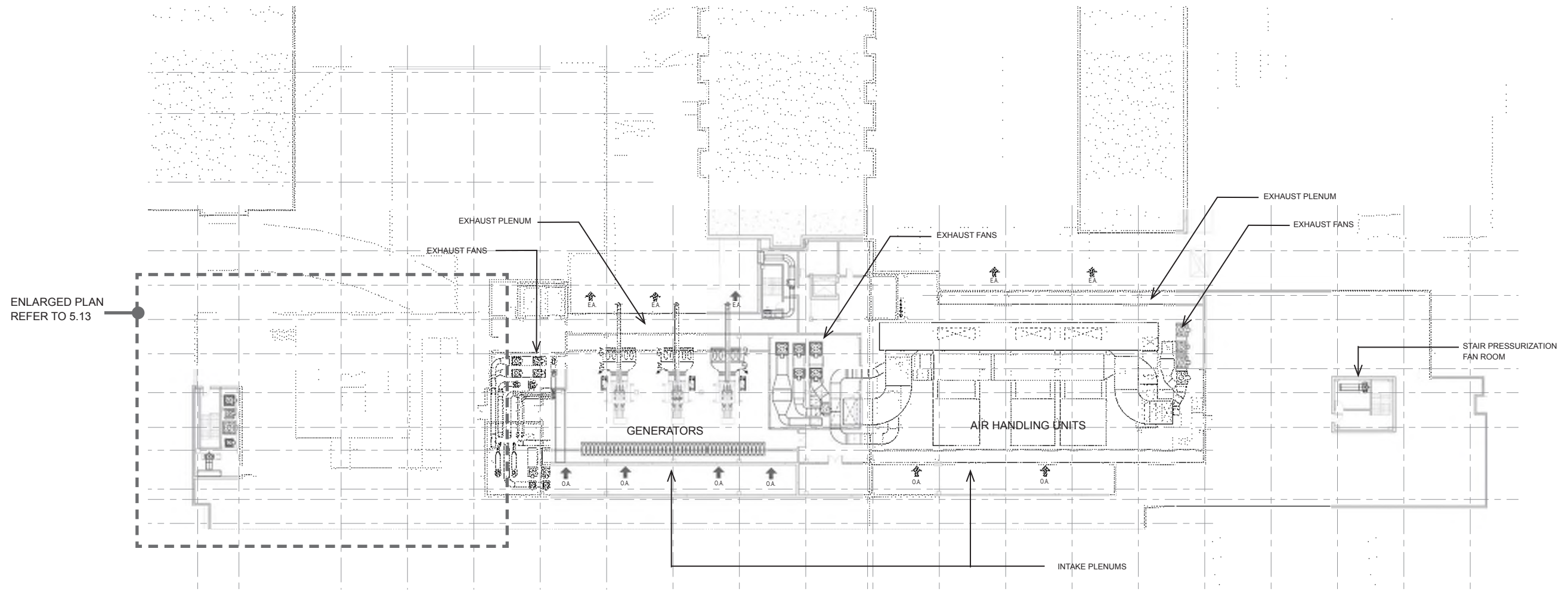
- HELIPAD DATA:
 DESIGN AIRCRAFT CRITERIA:
 TYPE: EC-155
 ROTOR DIA.: 41'-4"
 MAX TAKEOFF WEIGHT: 11,000 LBS

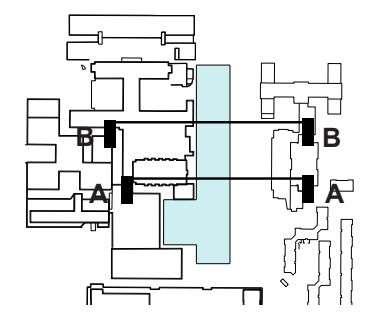
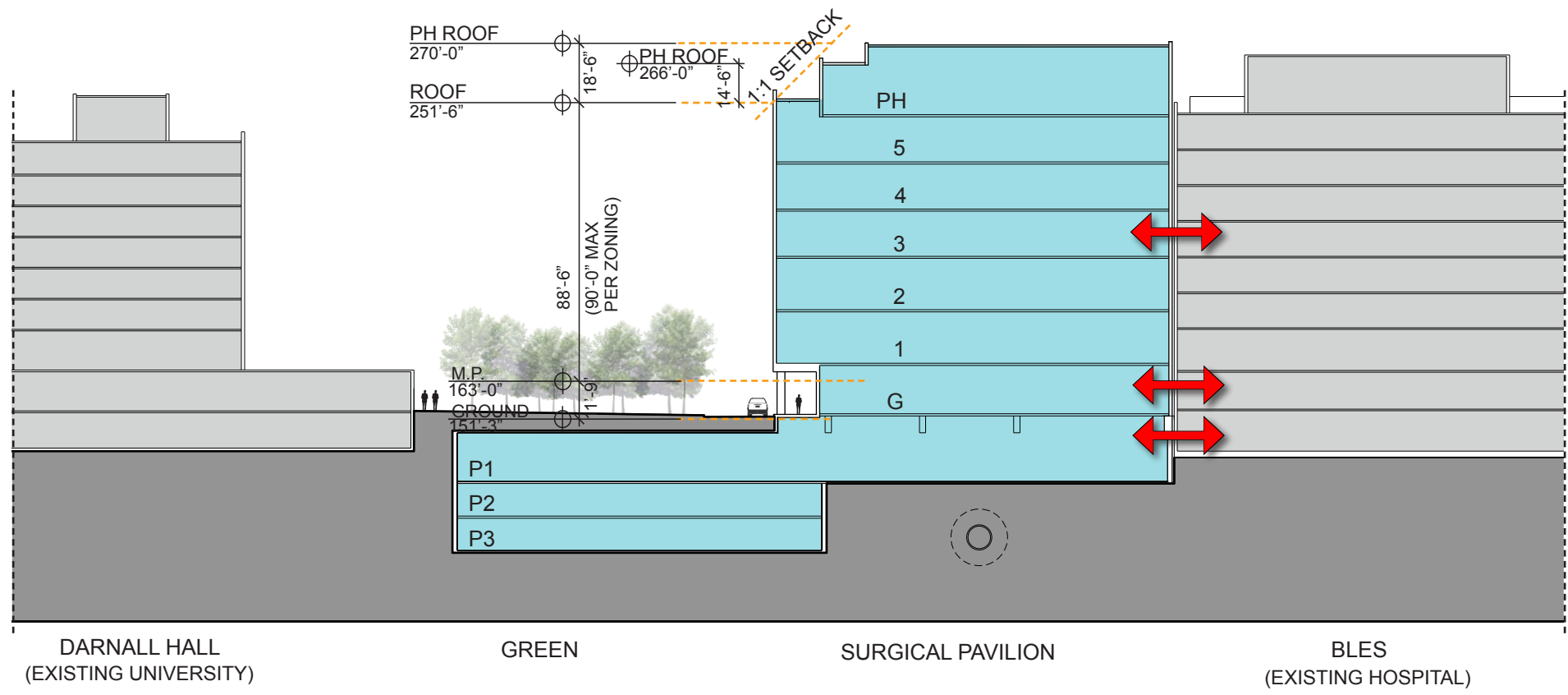
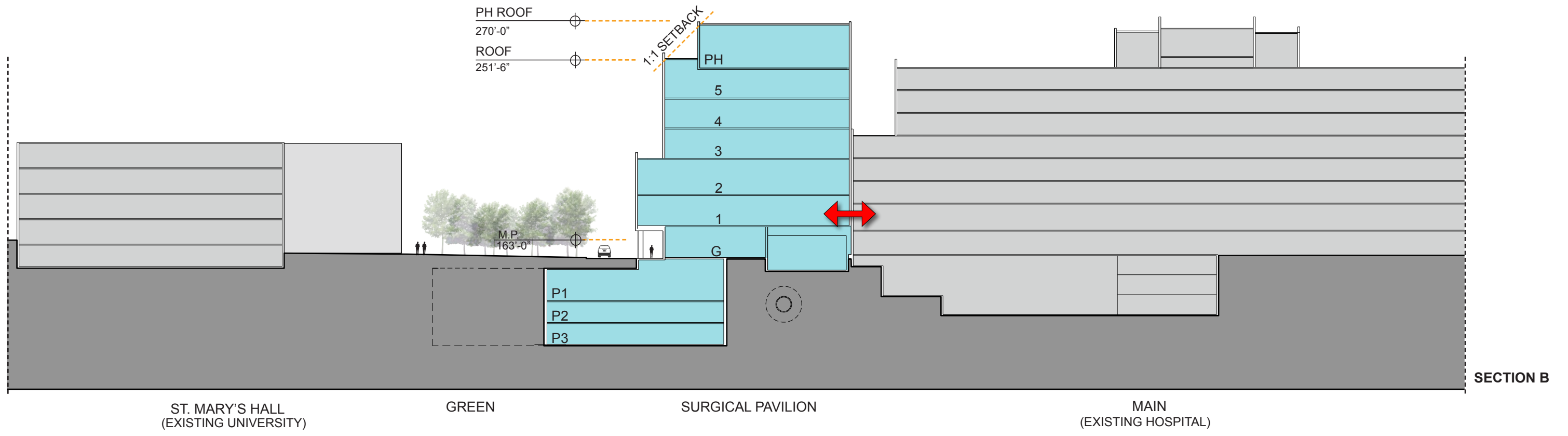
 HELIPAD LOCATION:
 LAT: 99 45' 34"
 LONG: 99 45' 34"

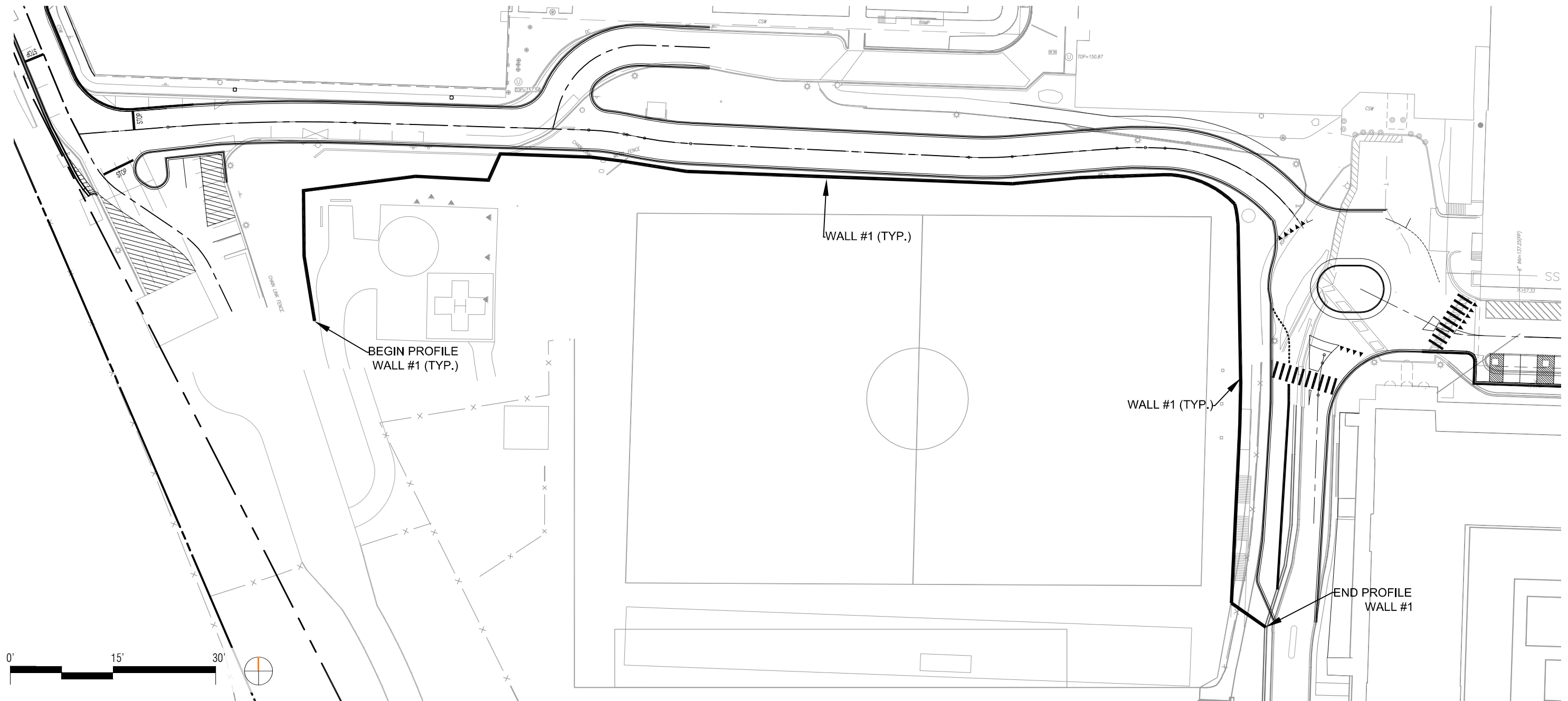
 APPROACH/DEPARTURE:
 INGRESS: 99°
 EGRESS: 99°

 PREVAILING WINDS:
 DIRECT1: NW
 DIRECT2: N
- HELISTOP DIMENSIONS AND CLEARANCES ARE BASED ON FAA AC 150/5390-2B REQUIREMENTS FOR A EC-155 HELICOPTER.
- VFR APPROACH/DEPARTURE SLOPE 8:1, TRANSITION SURFACE 2:1

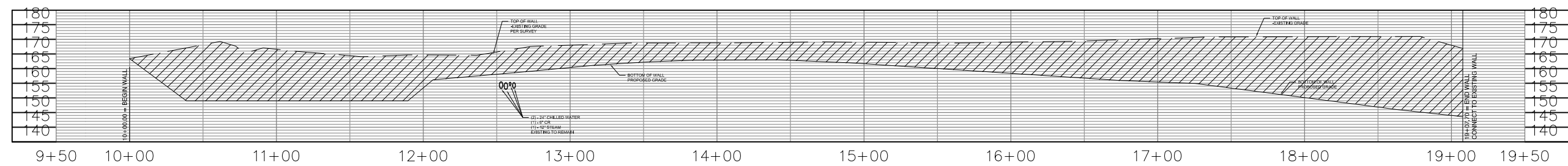








Note: Retaining wall horizontal and vertical geometry is conceptual in nature, and is subject to adjustment during final design.



CONCEPT PLAN AND PROFILE COURTESY OF DEWBERRY & DAVIS, LLC