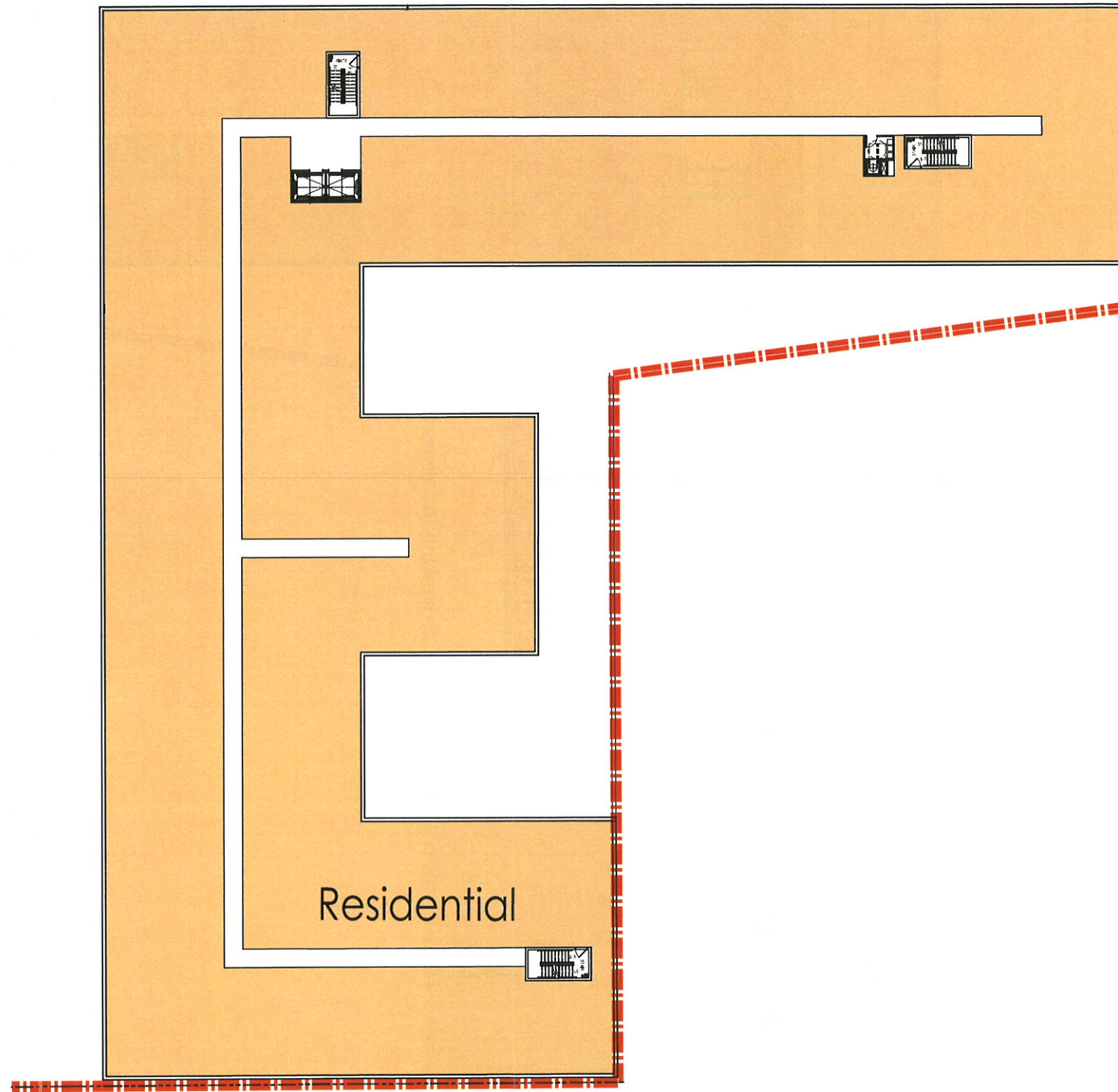


Private St.






Private St.

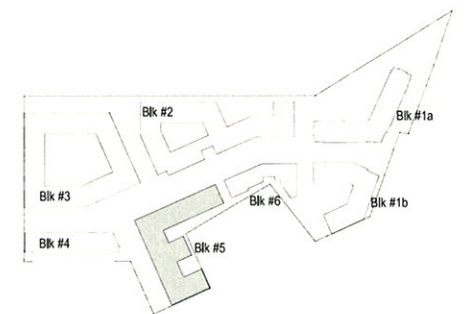


Residential

Rhode Island Ave. NE

Legend

-  Residential Amenity
-  Residential
-  Potential Retail
-  Retail
-  Service
-  Grocery



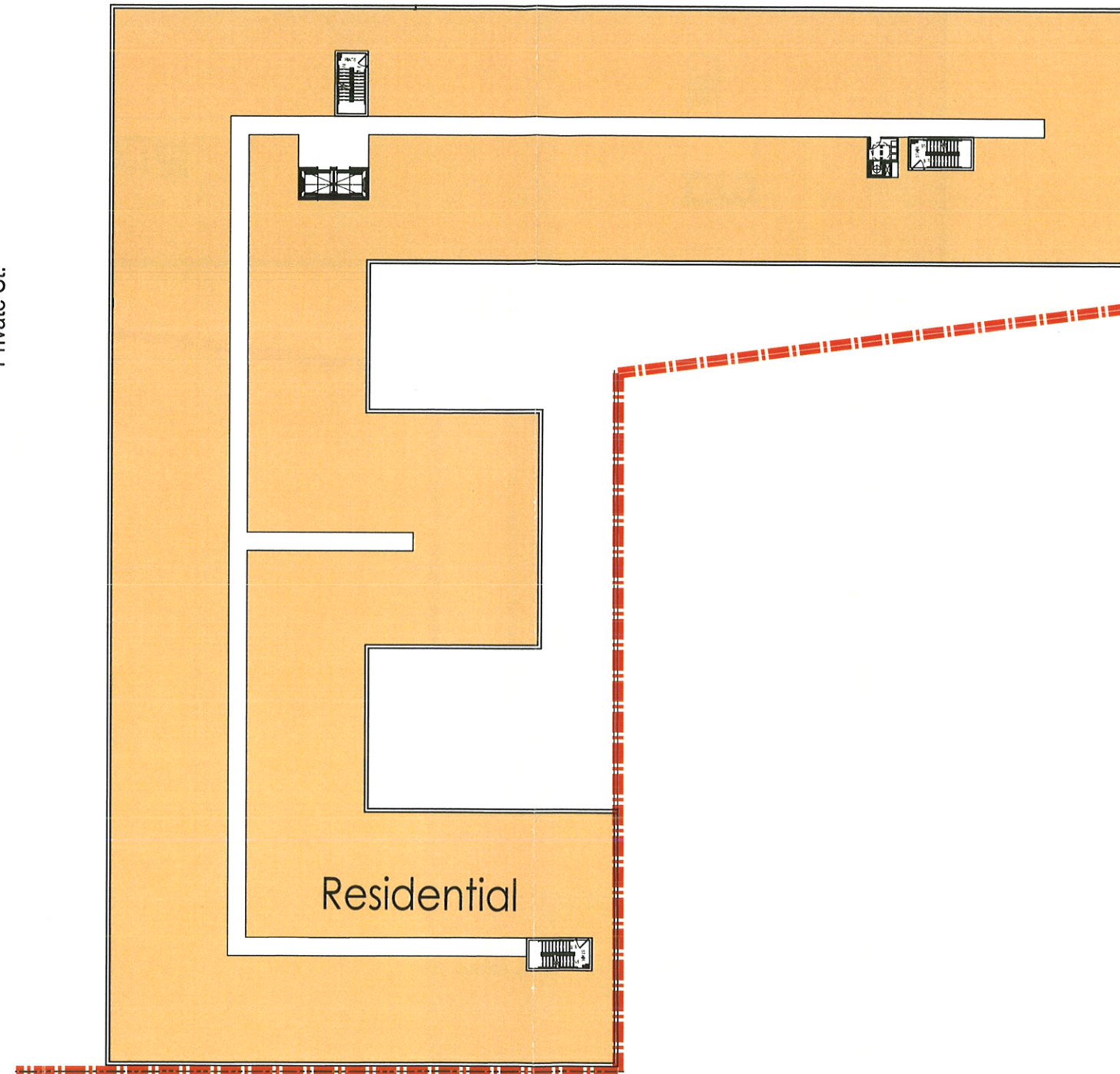
KEY PLAN

© 2015 SK&I Architectural Design Group, LLC.



Private St.

Private St.



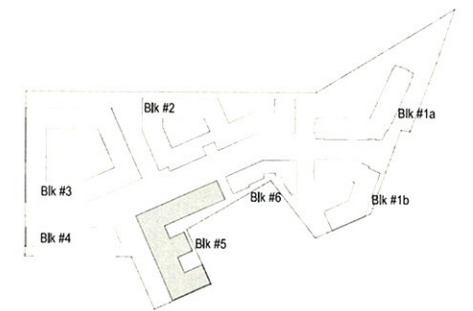
Legend

- Residential Amenity
- Residential
- Potential Retail
- Retail
- Service
- Grocery

© 2015 SK&I Architectural Design Group, LLC.

Residential

Rhode Island Ave. NE



KEY PLAN

MRP REALTY

680 Rhode Island Ave.

Washington, DC

July 13, 2015 | 5.106

SK+I
ARCHITECTURE

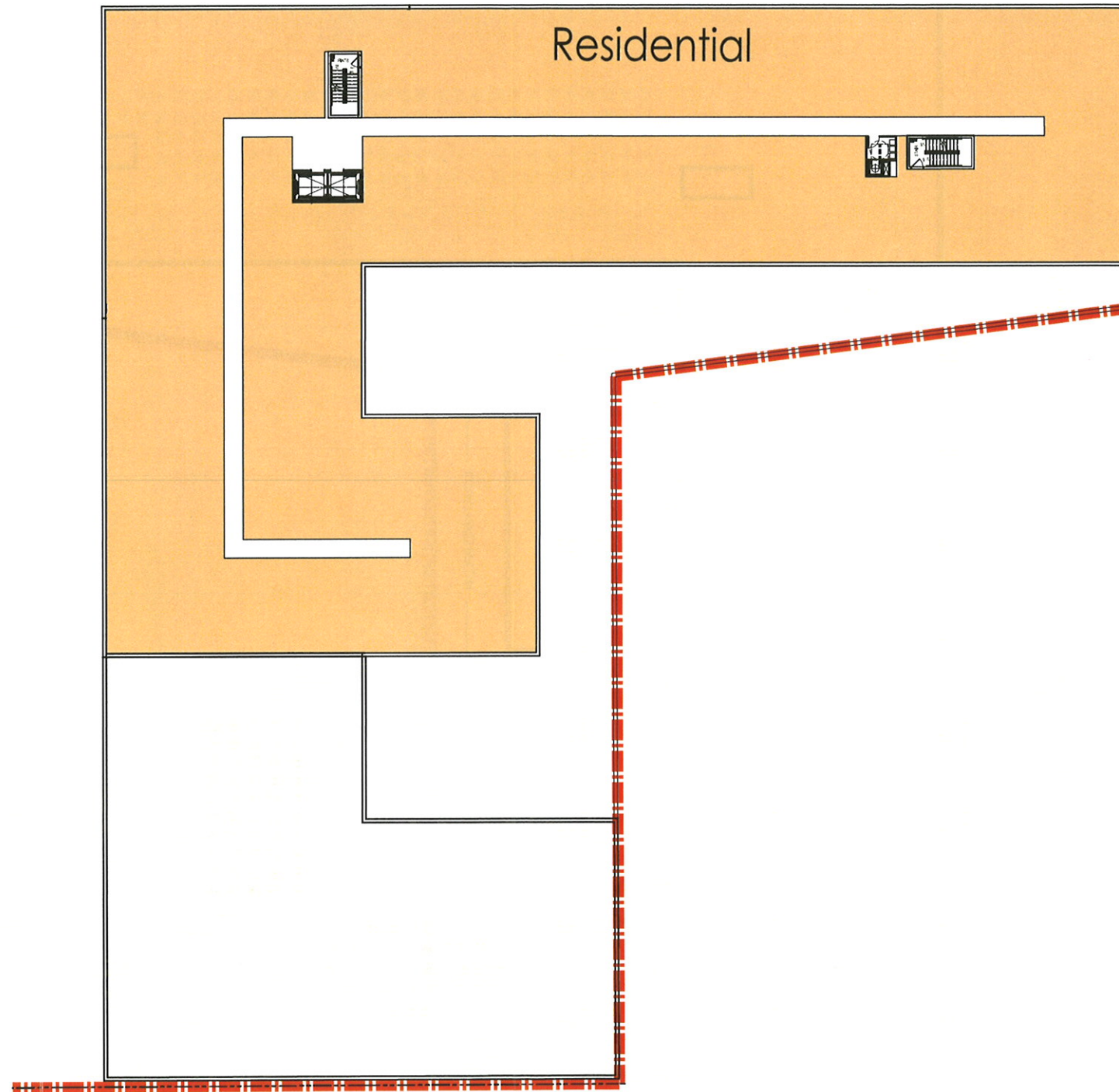
Block 5 3rd-6th Floor Plan

1:40



Private St.

Private St.

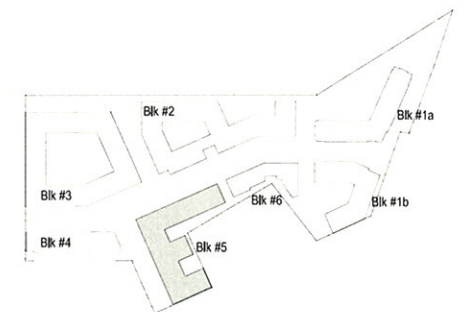


Residential

Rhode Island Ave. NE

Legend

- Residential Amenity
- Residential
- Potential Retail
- Retail
- Service
- Grocery

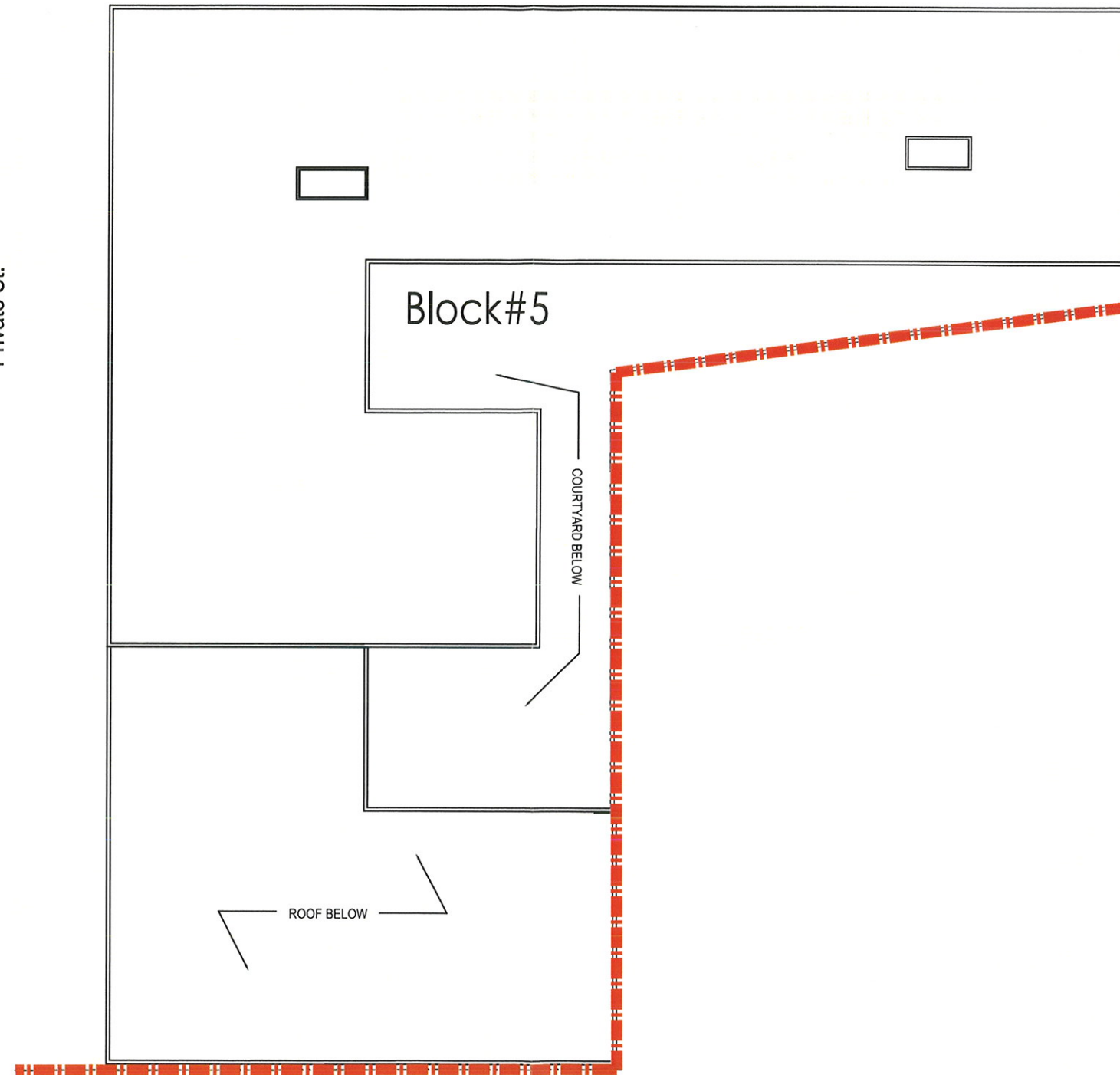


KEY PLAN



Private St.

Private St.

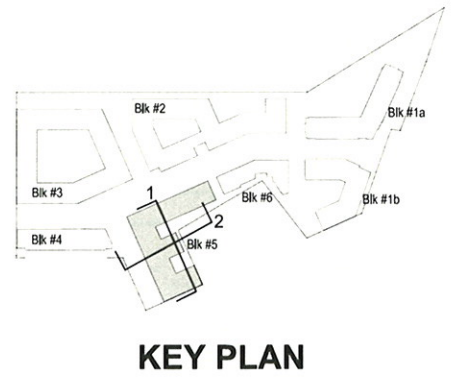
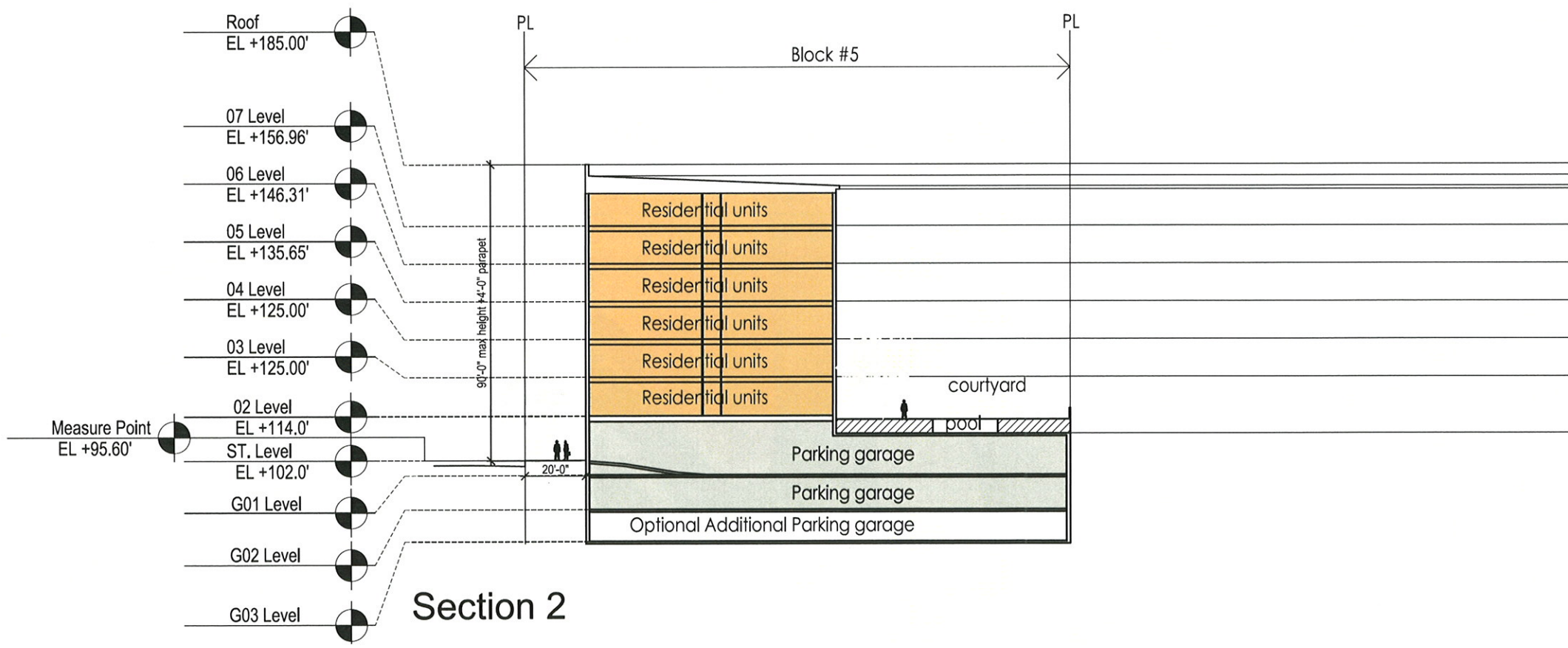
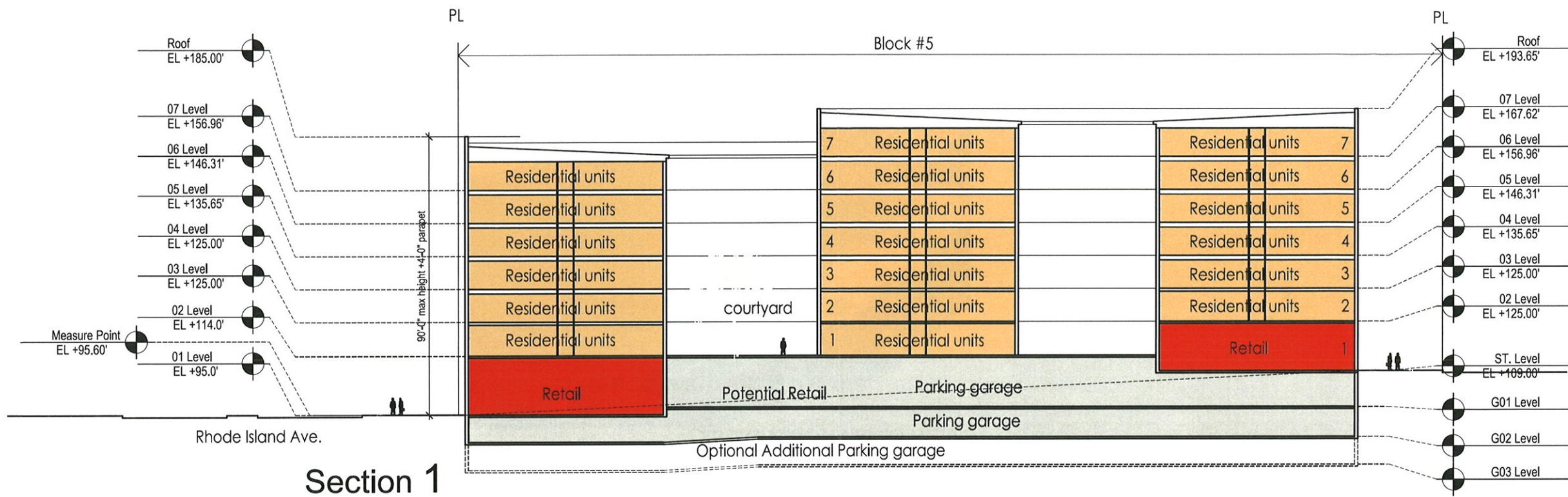


Rhode Island Ave. NE



KEY PLAN







VIEW FROM NORTHWEST



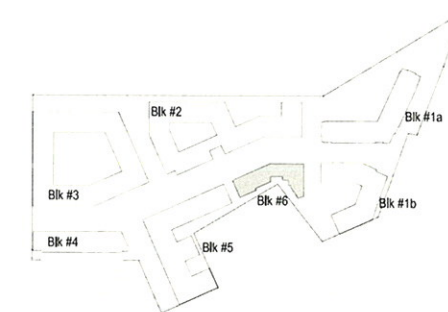
VIEW FROM SOUTHEAST

Block 6 Stage 1
Calculations

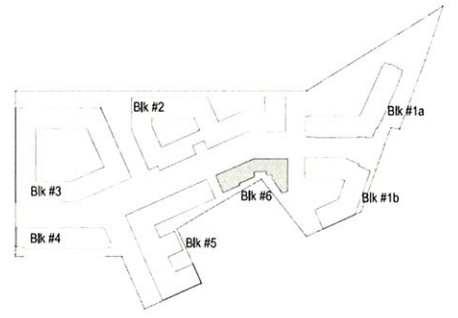
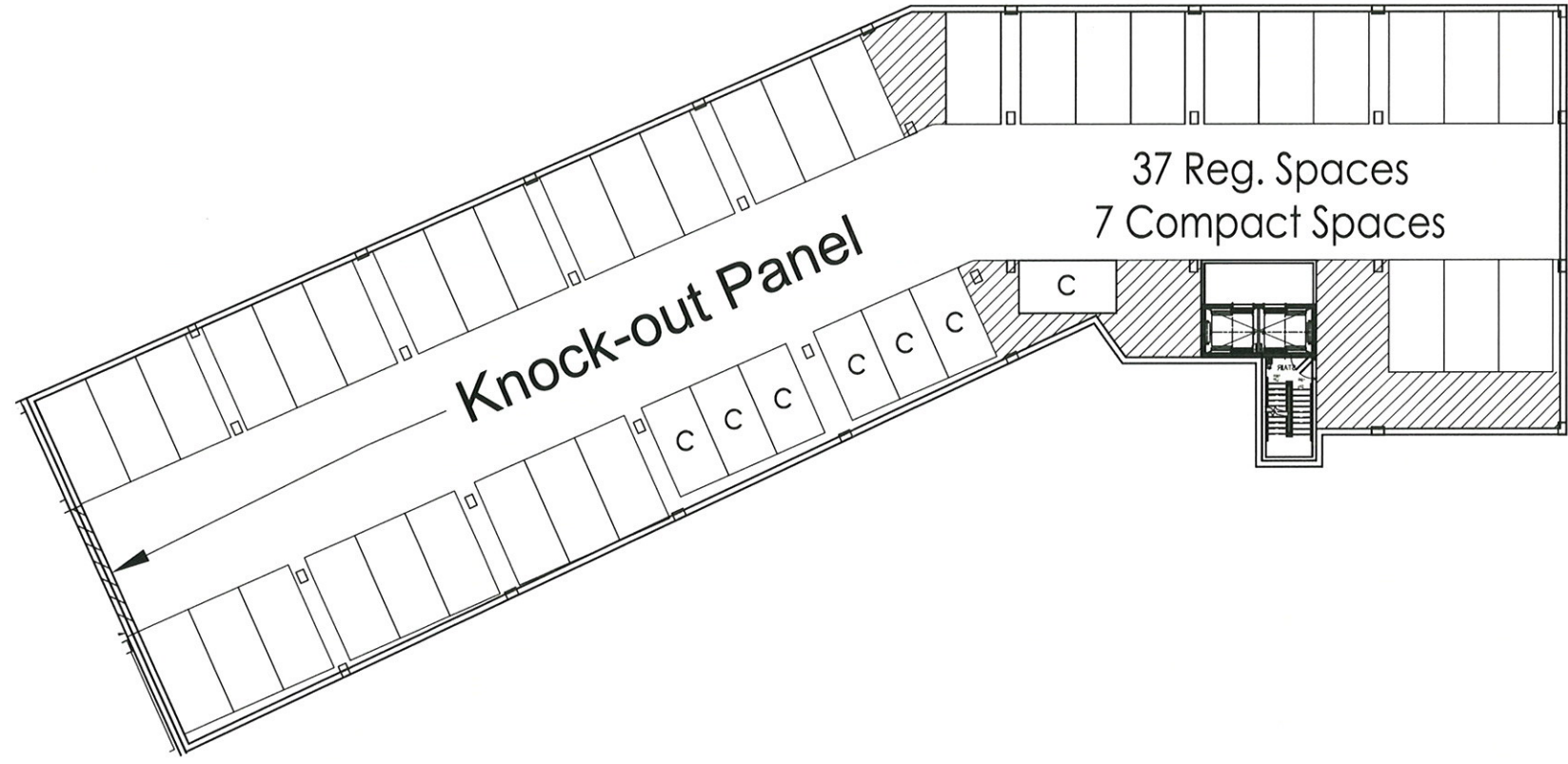
Mixed Use	Floor	Residential S.F.	Retail S.F.	Gross S.F.
	7	13,697		13,697
	6	13,697		13,697
	5	13,697		13,697
	4	13,697		13,697
	3	13,697		13,697
	2	13,697		13,697
	1	6,537	8,828	15,365
Total		88,719	8,828	97,547

Legend

- Residential
- Service
- Retail
- Grocery

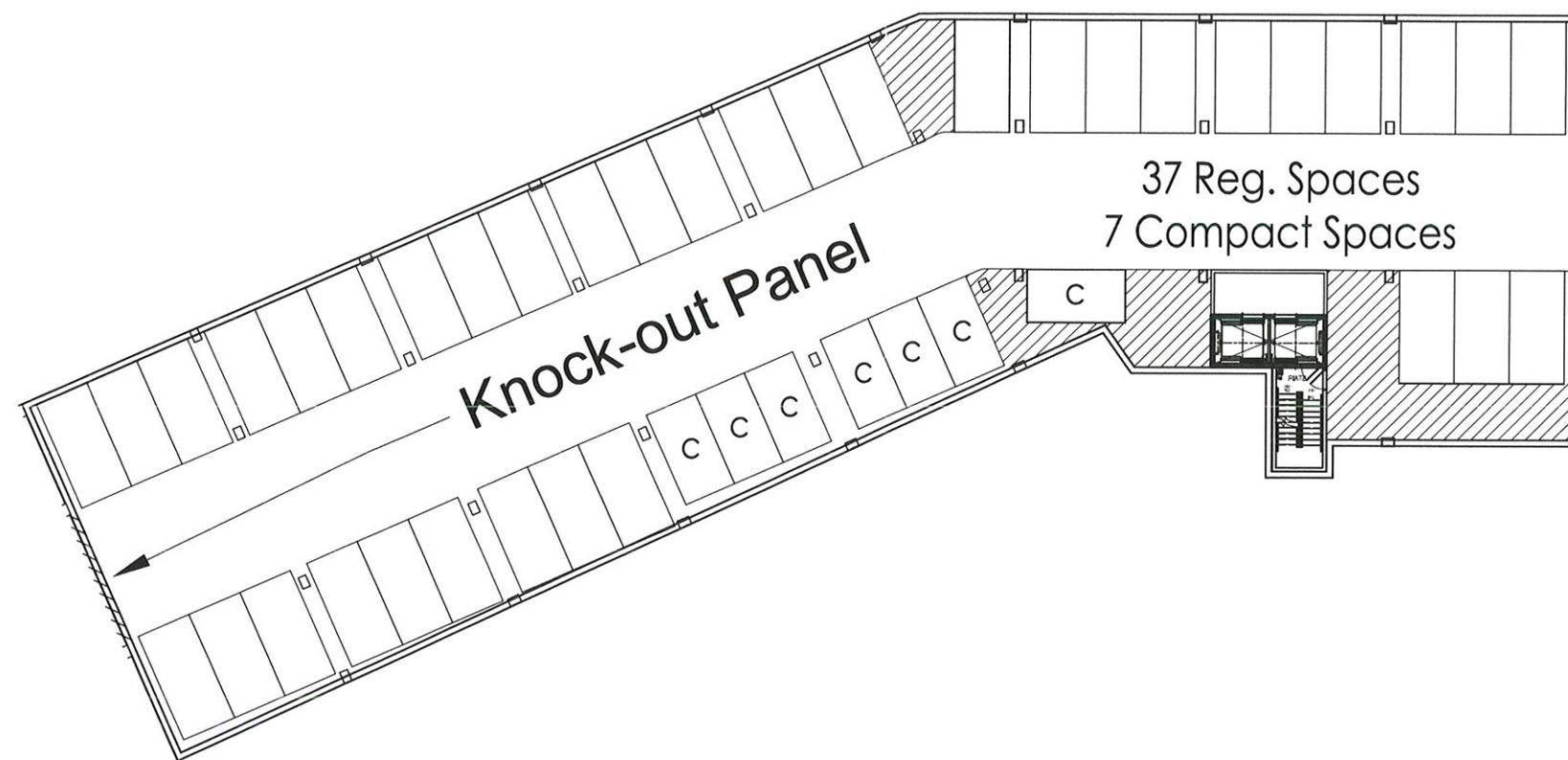


KEY PLAN



KEY PLAN



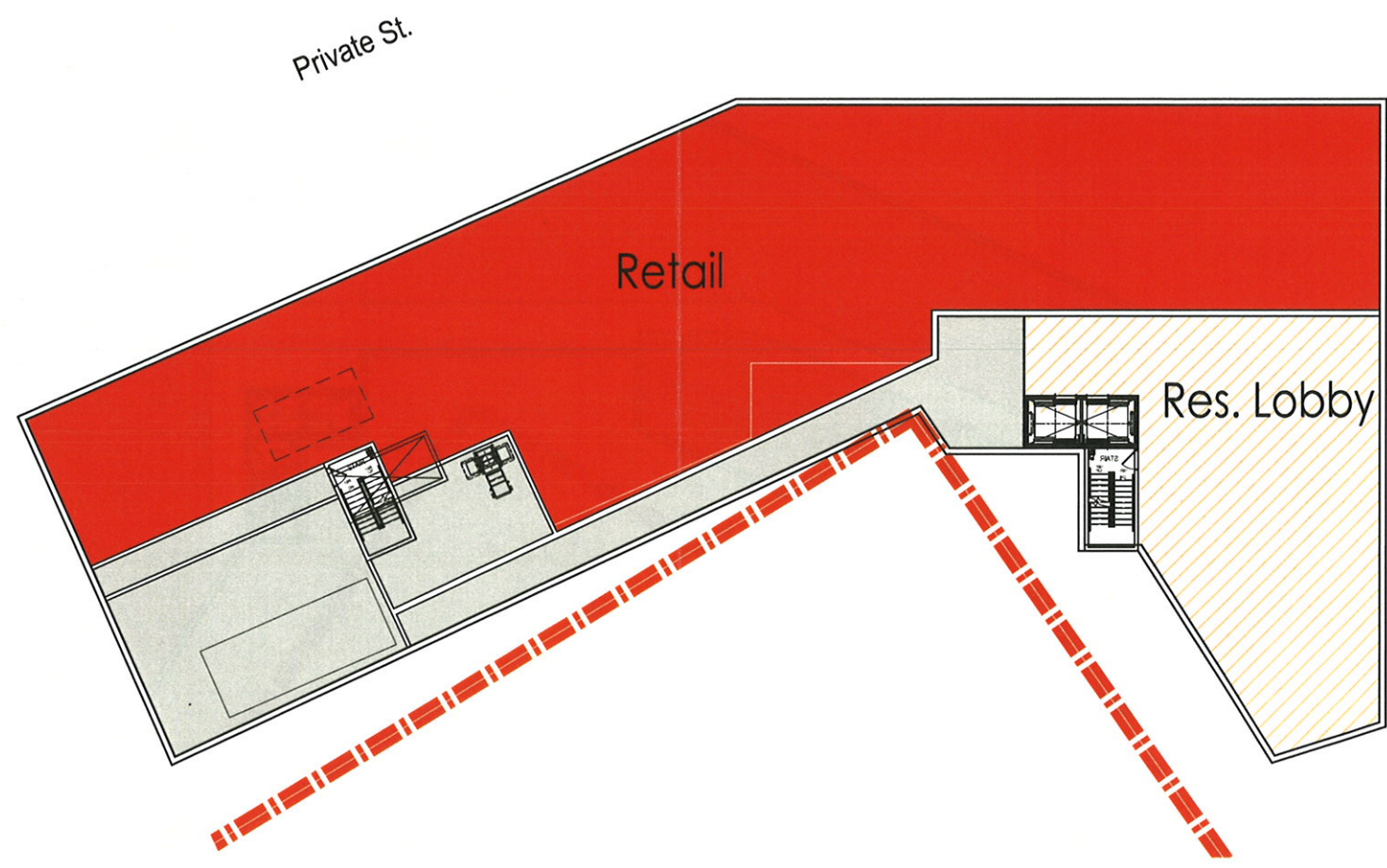


KEY PLAN

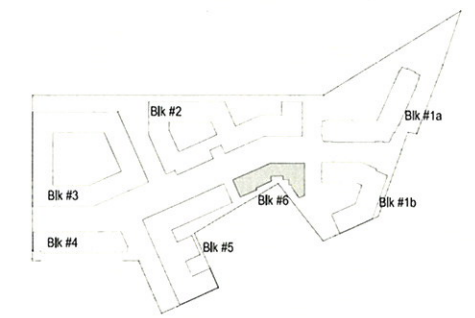


Legend

-  Residential Amenity
-  Retail
-  Residential
-  Service
-  Potential Retail
-  Grocery



Private St.



KEY PLAN

