

4th and Rhode Island

floor	UNIT MIX Block 1A (See Block 1B for shared Garage G2 and G3)						TOTALS	Gross Residential
	3 Bedroom 1140-1295 sf	2 Bedroom 1025-1080 sf	1 Bed + Den 900-920 sf	1 Bedroom 685-755 sf	JR 1 Bed 530-540 sf	Efficiency 450-450 sf		
7th	2	6	6	9	5	3	31	28,076
6th	2	6	6	9	5	3	31	28,076
5th	2	6	6	9	5	3	31	28,076
4th	2	6	6	9	5	3	31	28,076
3rd	2	6	6	9	5	3	31	28,076
2nd	2	6	6	9	5	3	31	28,076
1st	1	5	5	7	4	4	26	22,025
G1								
<b>Total</b>	<b>13</b>	<b>41</b>	<b>41</b>	<b>61</b>	<b>34</b>	<b>22</b>	<b>212</b>	<b>190,481</b>

Affordable Housing 8.00% 15,238

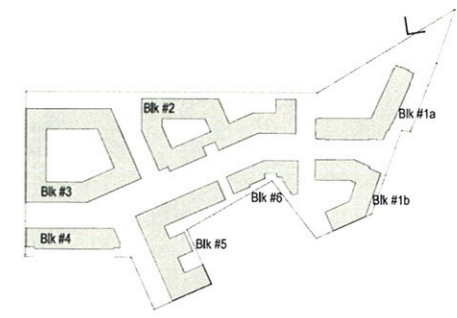
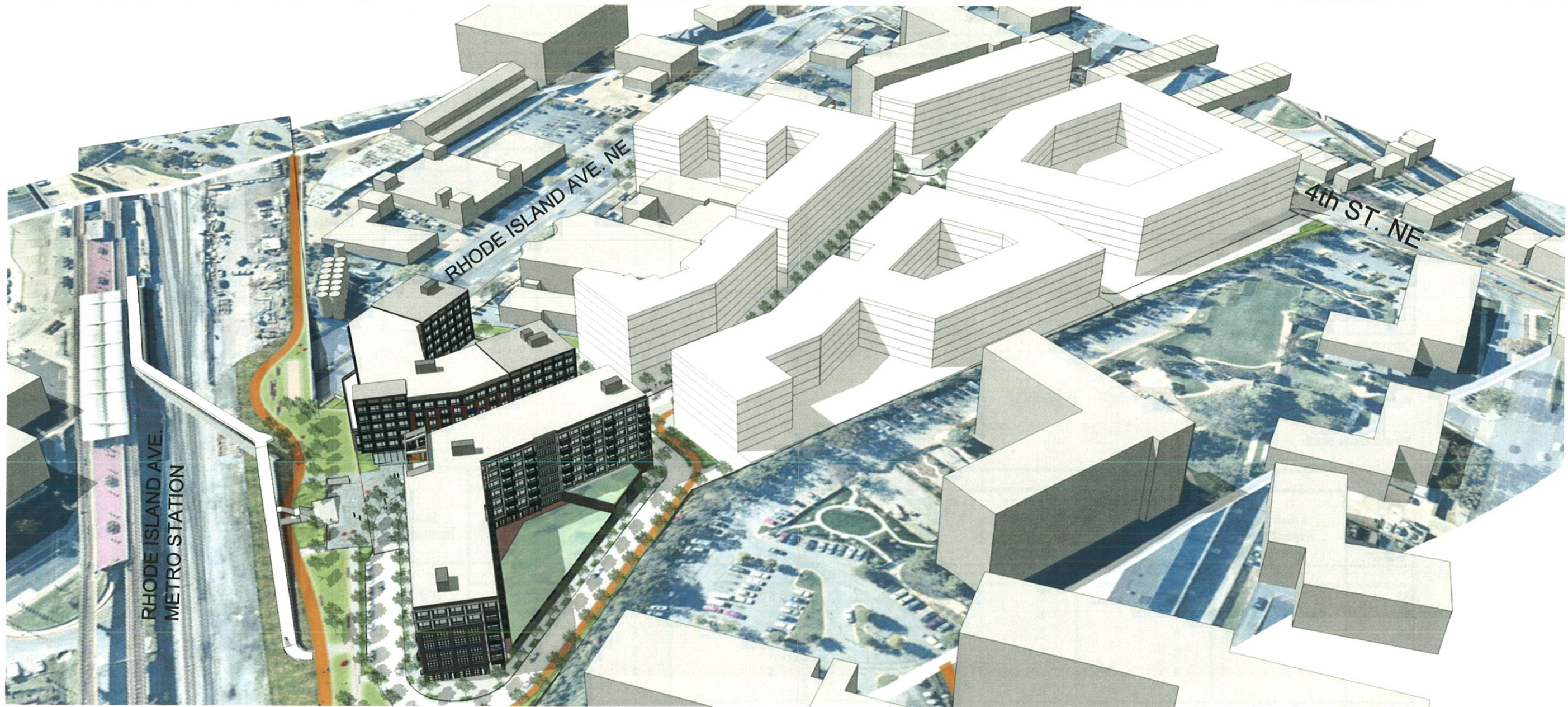


4th and Rhode Island

floor	UNIT MIX Block 1B						TOTALS	Gross Residential
	3 Bedroom 1140-1295 sf	2 Bedroom 1025-1080 sf	1 Bed + Den 900-920 sf	1 Bedroom 685-755 sf	JR 1 Bed 530-540 sf	Efficiency 450-450 sf		
6th	2	5	5	8	4	3	27	24,470
5th	2	5	5	8	4	3	27	24,470
4th	2	5	5	8	4	3	27	24,470
3rd	2	5	5	8	4	3	27	24,470
2nd	2	5	5	7	4	2	25	22,020
1st	0	0	0	0	0	0	0	2,672
G1								
G2								
G3								
<b>Total</b>	<b>10</b>	<b>25</b>	<b>25</b>	<b>39</b>	<b>20</b>	<b>14</b>	<b>133</b>	<b>122,572</b>

Affordable Housing 8.00% 9,806





KEY PLAN

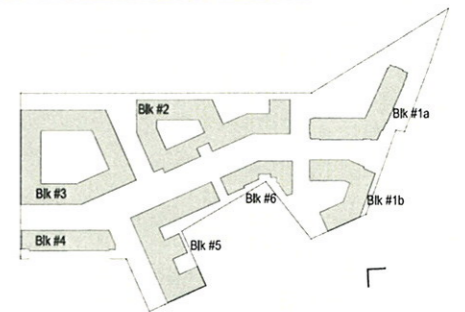
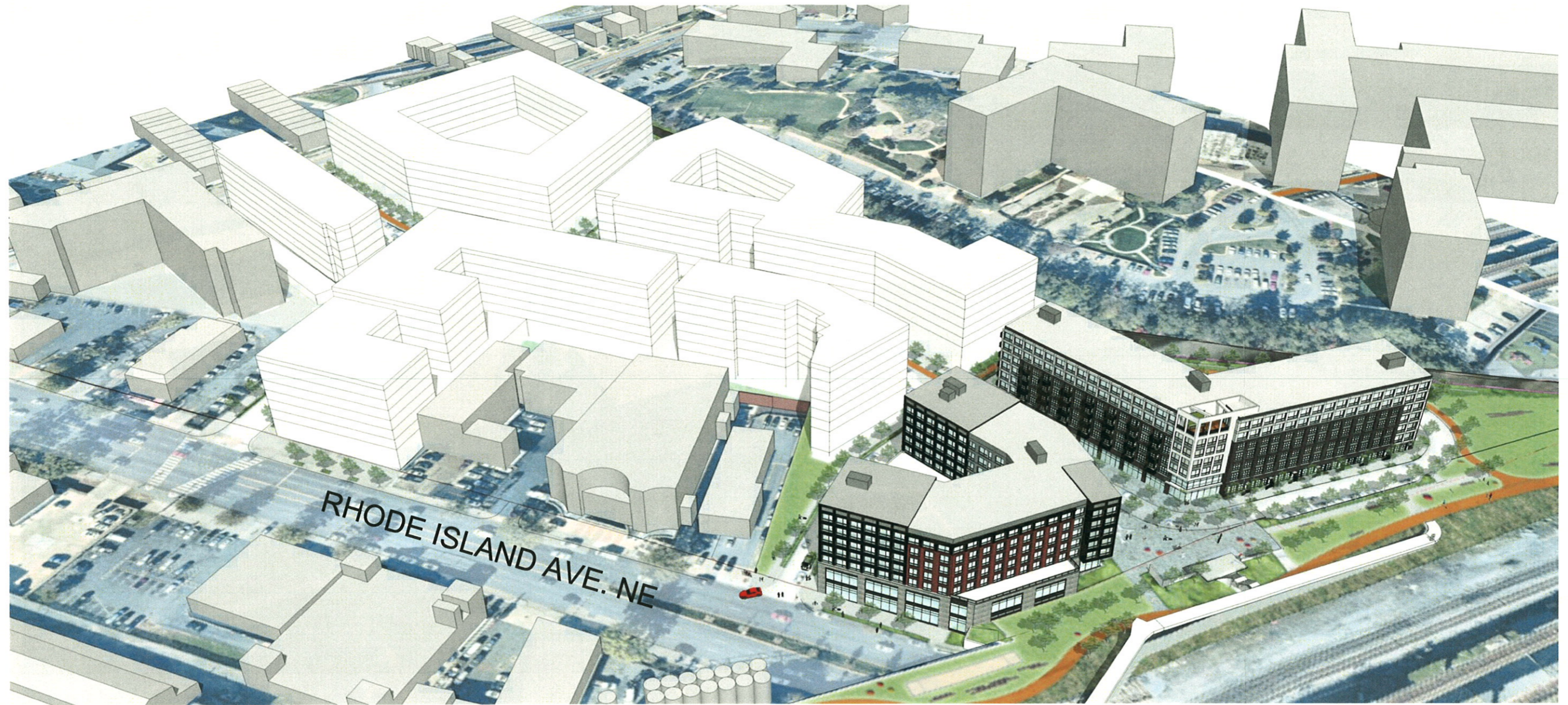
MRP REALTY

680 Rhode Island Ave. | Washington, DC

July 13, 2015 | 0.21

SK+I  
ARCHITECTURE

Site Aerials-Northeast



KEY PLAN

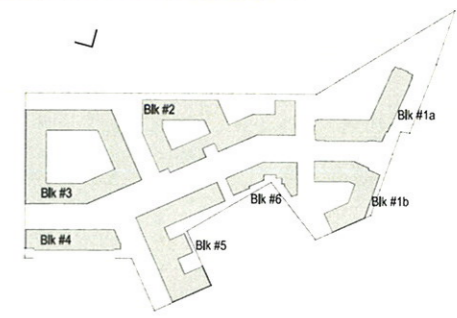
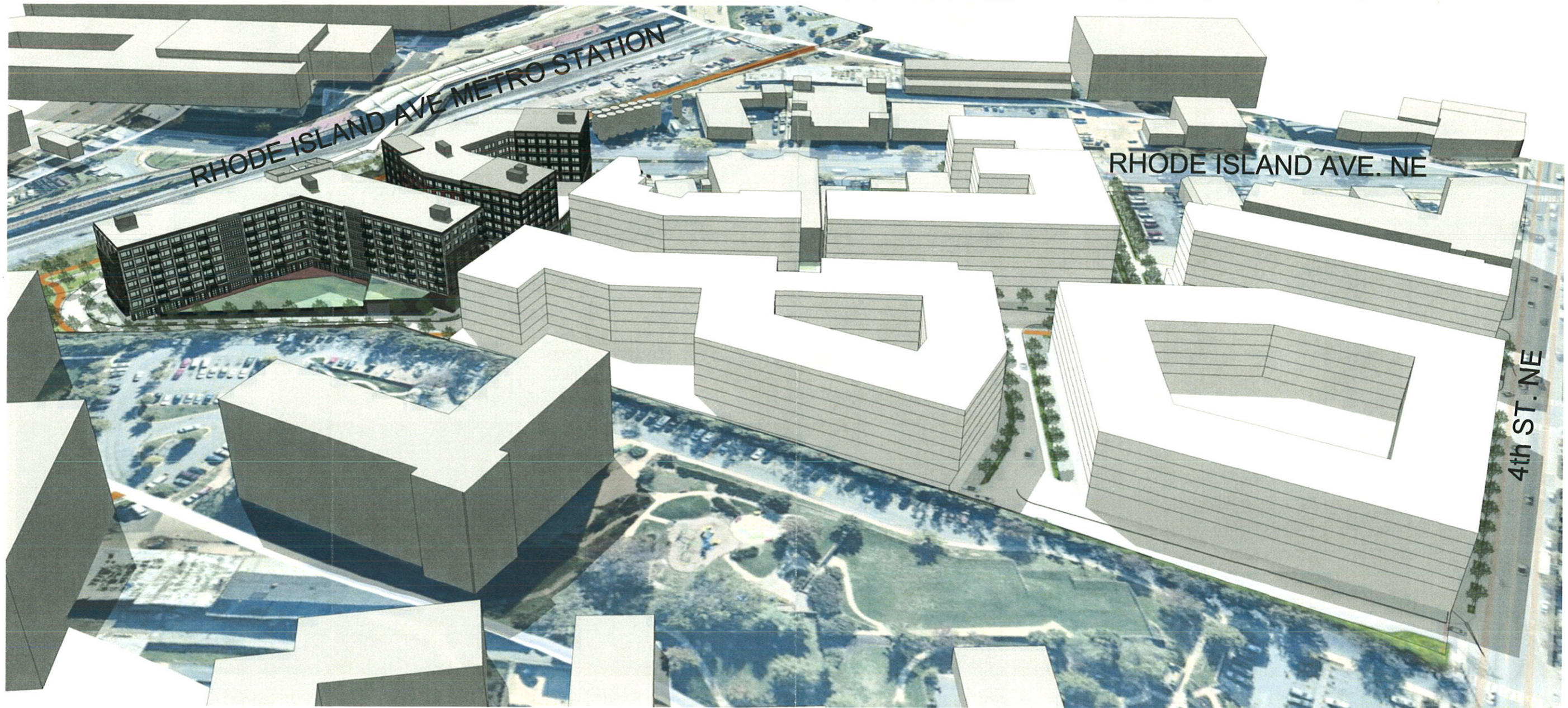
MRP REALTY

680 Rhode Island Ave. | Washington, DC

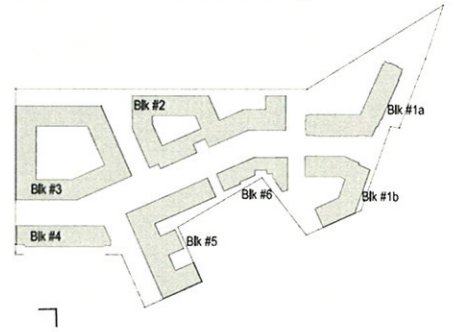
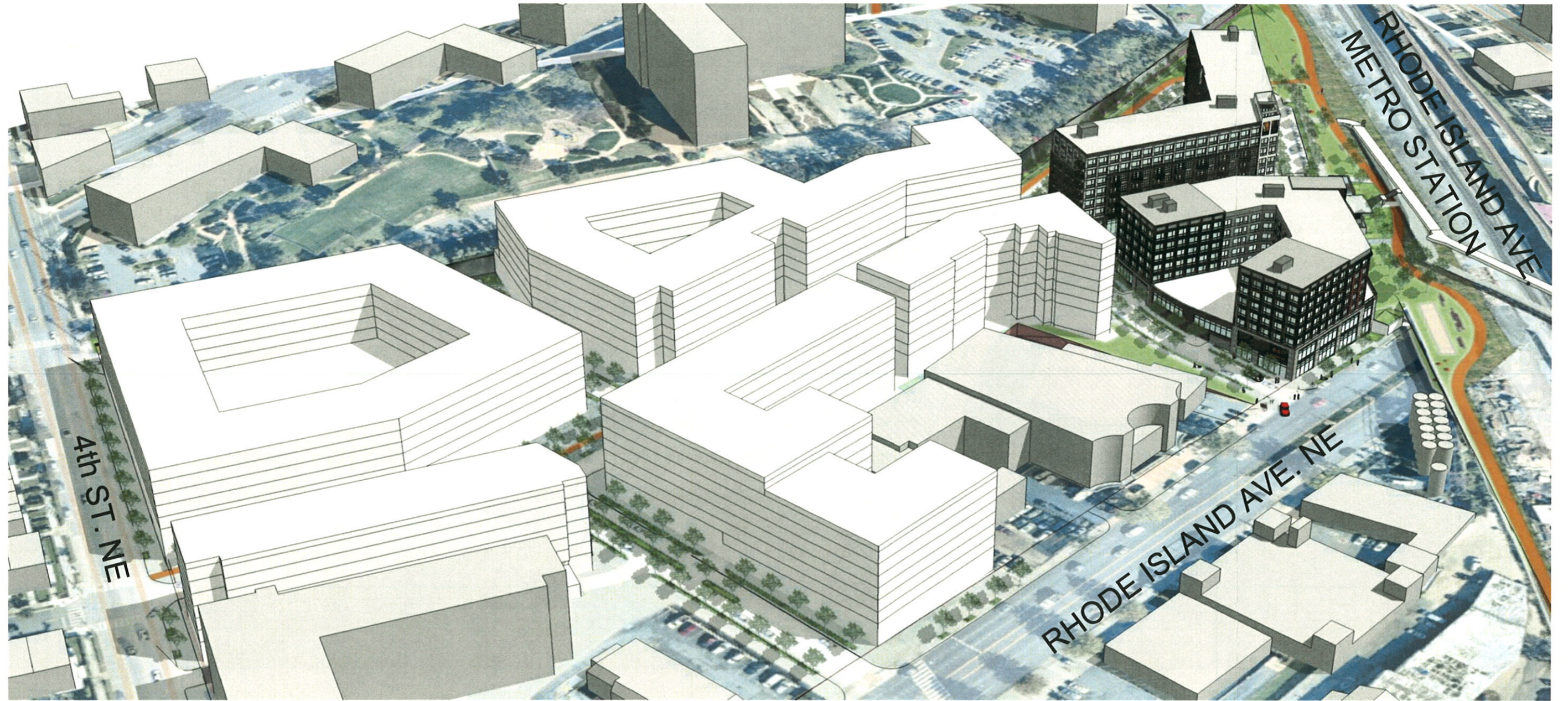
July 13, 2015 | 0.22

Site Aerials-Southeast





KEY PLAN



KEY PLAN

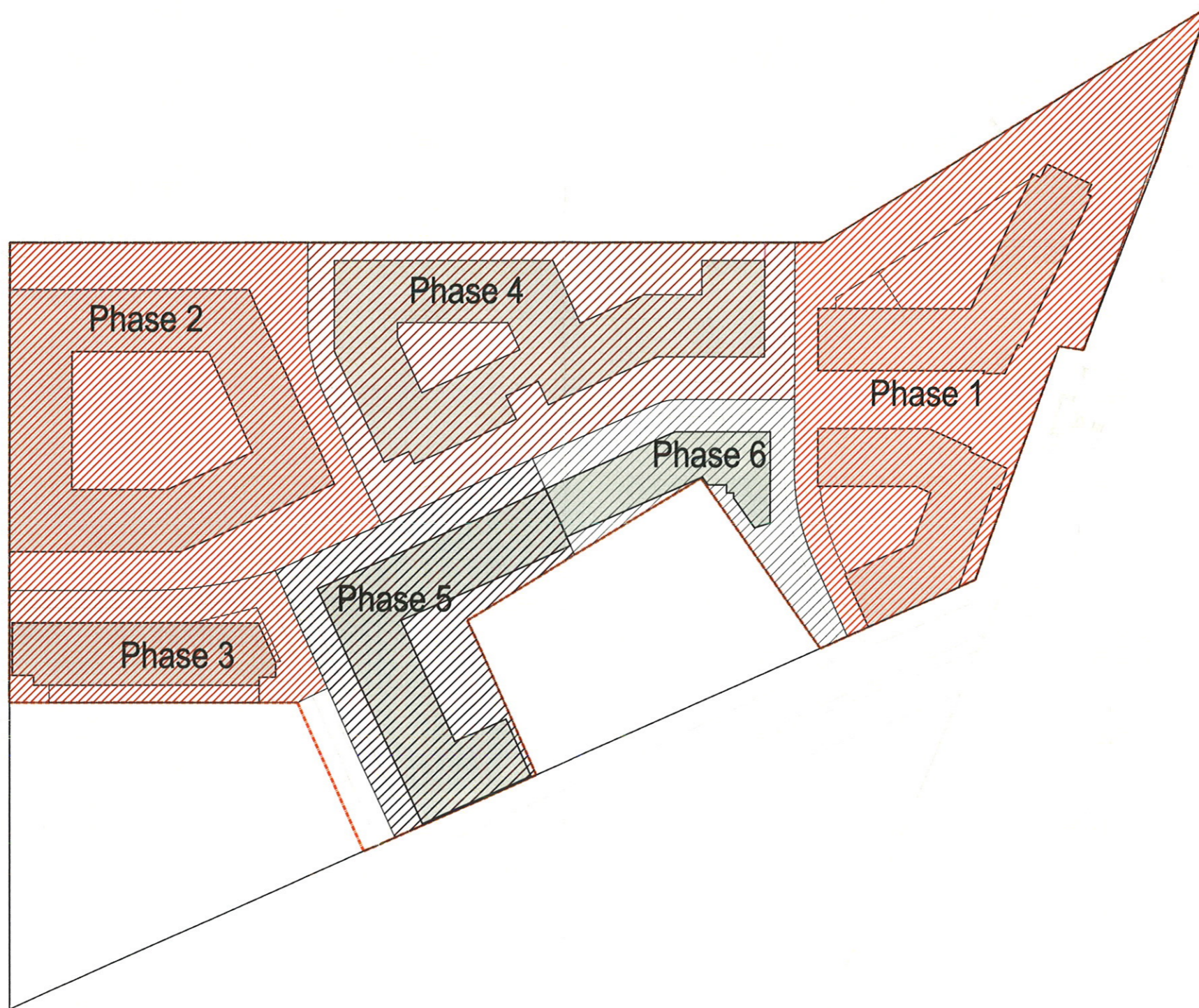
MRP REALTY

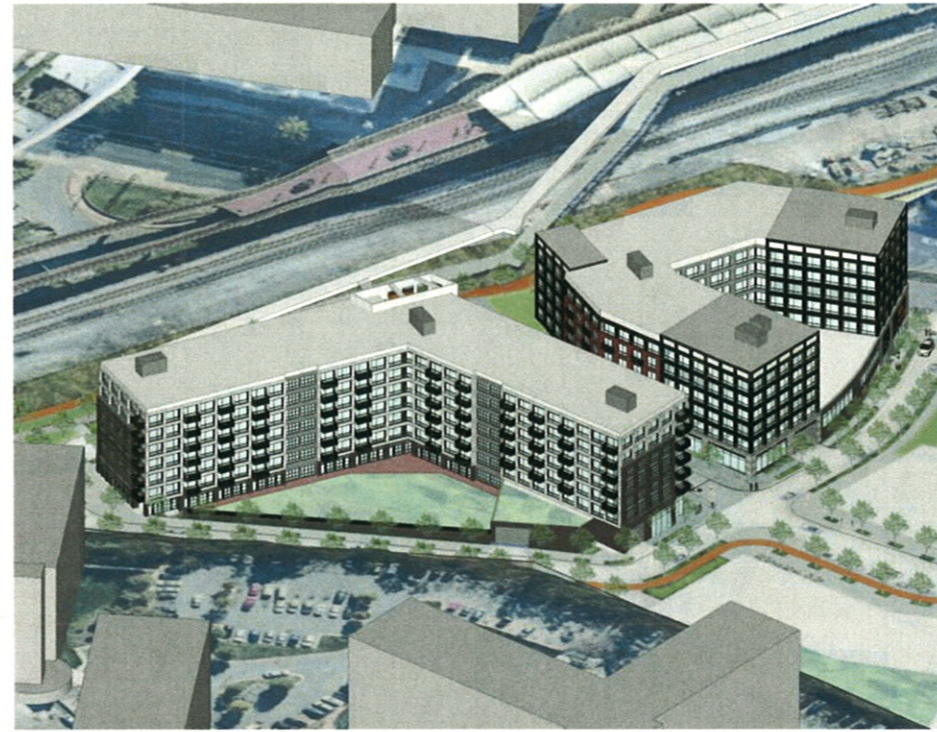
680 Rhode Island Ave. | Washington, DC

July 13, 2015 | 0.24

Site Aerials-Southwest







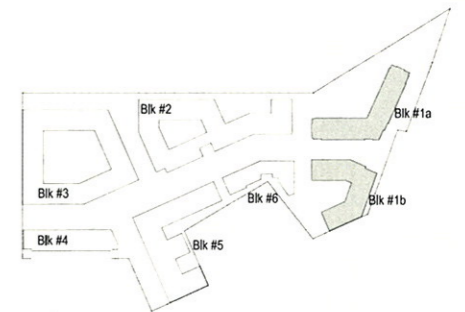
VIEW FROM NORTHWEST

Block 1A Stage 2  
Calculations

Mixed Use	Floor	Residential S.F.	Retail S.F.	Gross S.F.
	7	28,076		28,076
	6	28,076		28,076
	5	28,076		28,076
	4	28,076		28,076
	3	28,076		28,076
	2	28,076		28,076
	1	22,025	7,335	29,360
<b>Total</b>		<b>162,405</b>	<b>7,335</b>	<b>197,816</b>



VIEW FROM SOUTHEAST



KEY PLAN