

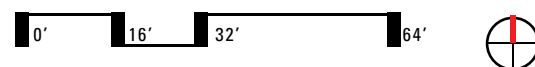
- RESIDENTIAL
- CIRCULATION
- COMMUNITY
- MEP
- PARKING/BIKES/LOADING
- LANDSCAPE

NOTE: INTERIOR LAYOUTS SHOWN ON BUILDING PLANS ARE SCHEMATIC. THOUGH CHANGES TO THESE LAYOUTS MAY OCCUR, THEY WILL NOT SIGNIFICANTLY IMPACT THE EXTERIOR ENVELOPE OF THE BUILDING.

ARIA
DEVELOPMENT GROUP

CUNNINGHAM | QUILL ARCHITECTS

Copyright © 2015

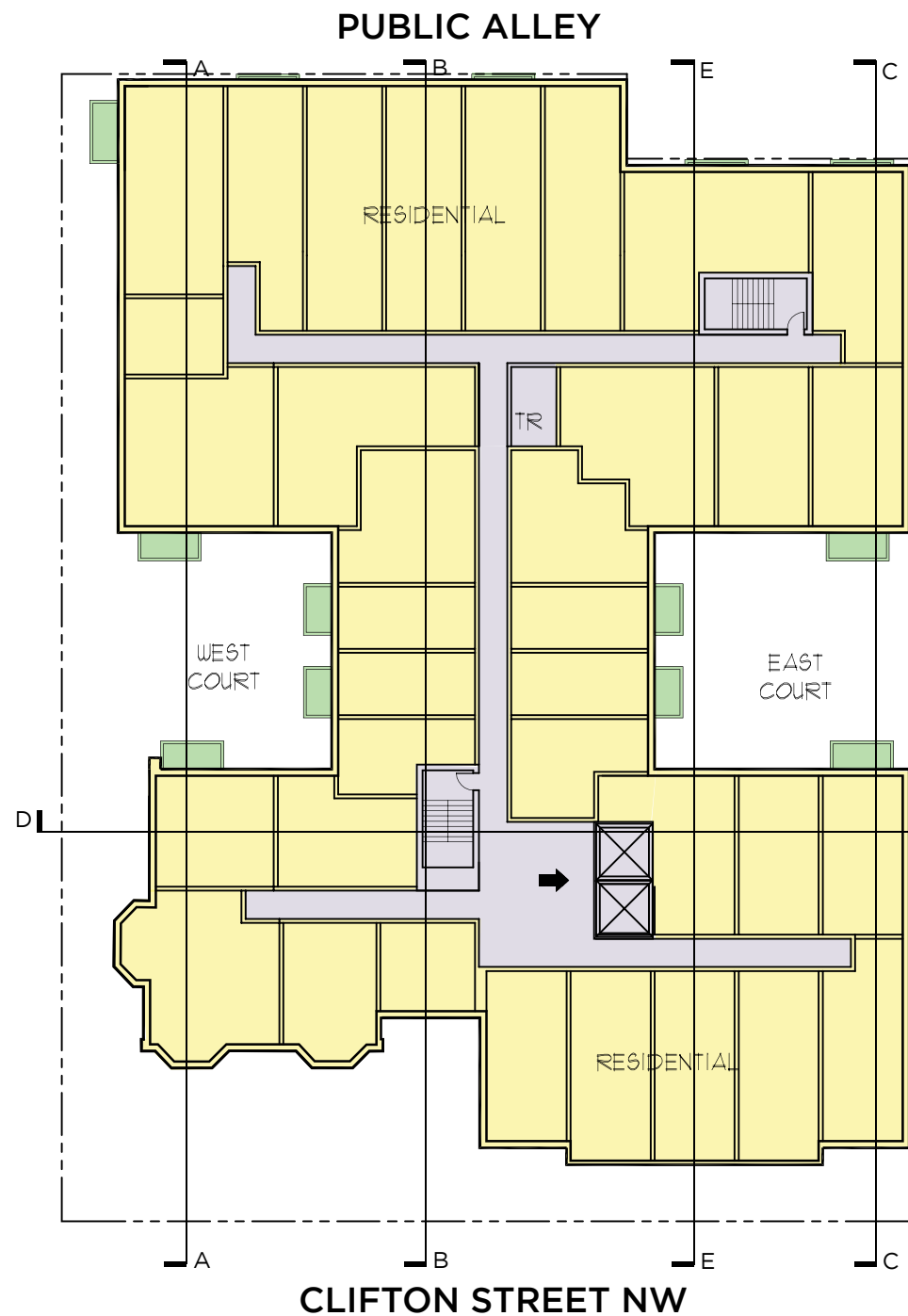


A-12

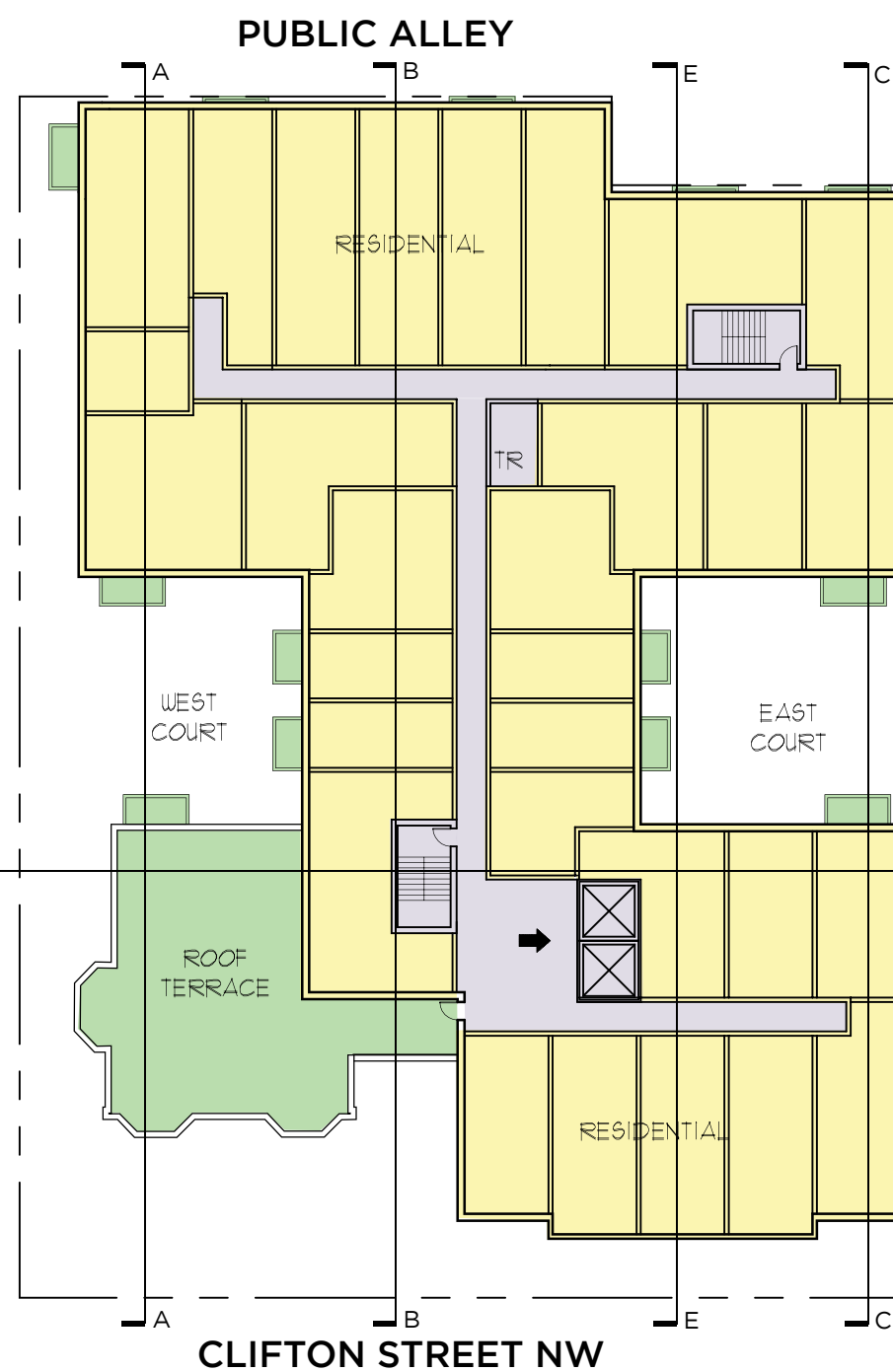
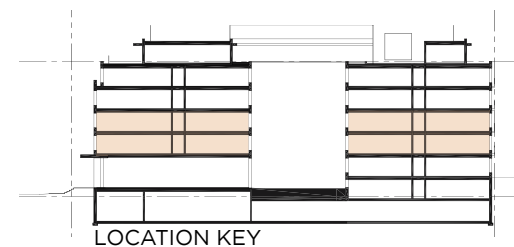
Proposed Floor Plans
1315 Clifton Street NW

Washington, DC

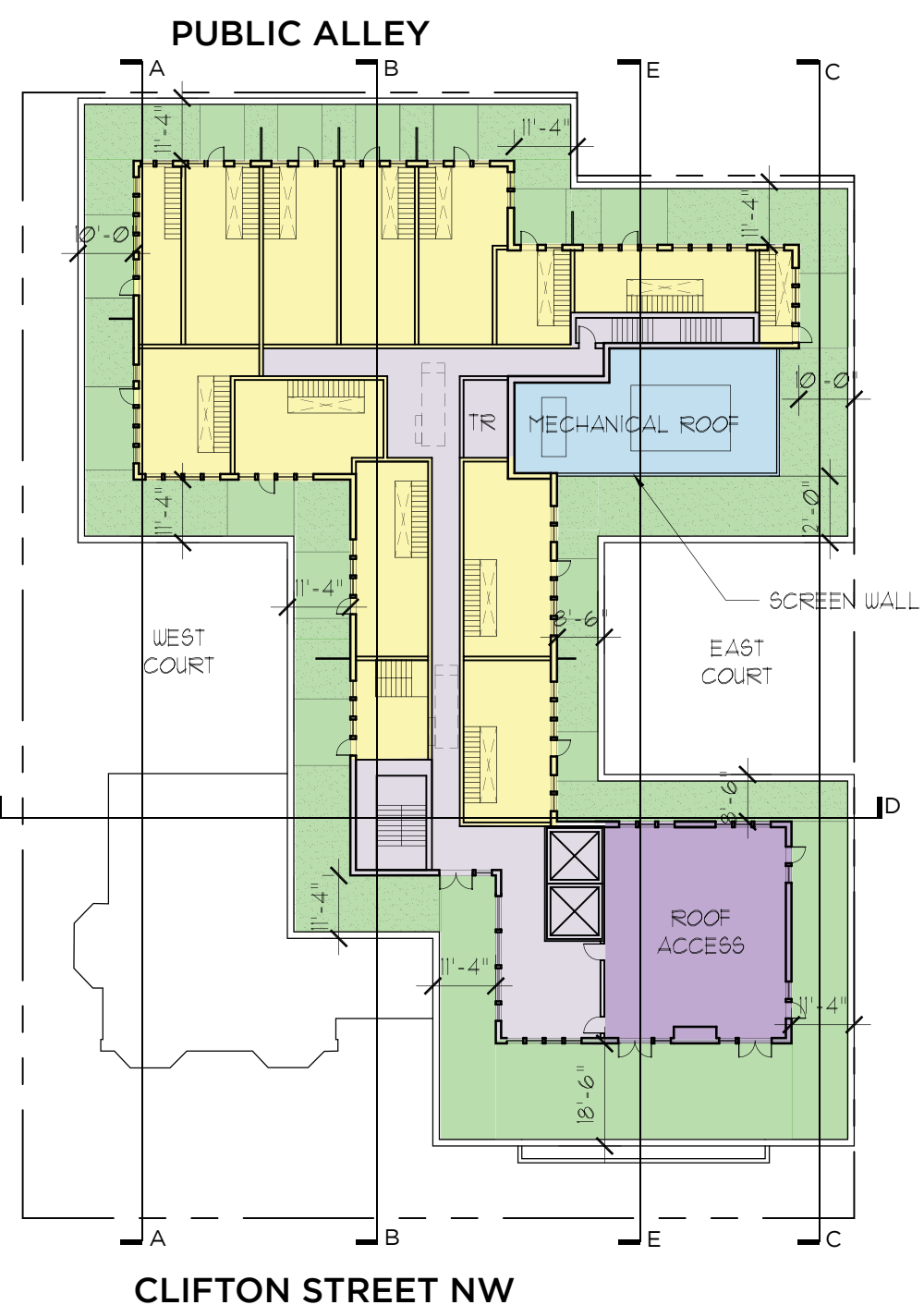
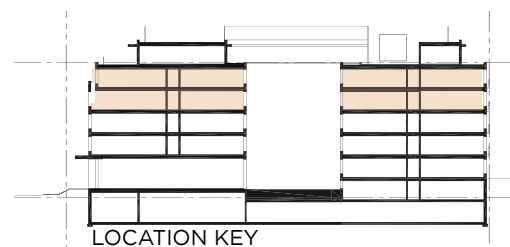
ZONING COMMISSION
District of Columbia
CASE NO. 15-03
EXHIBIT NO. 1A3
February 6, 2015



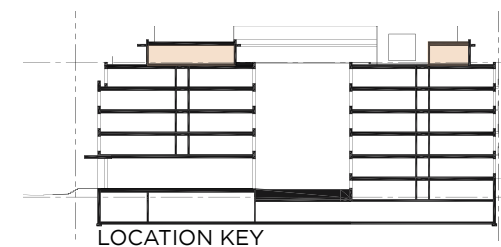
TYPICAL FLOOR PLAN
1" = 32'-0"



TYPICAL UPPER FLOOR PLAN
1" = 32'-0"



PENTHOUSE FLOOR PLAN
1" = 32'-0"

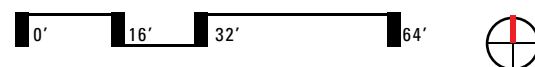


- RESIDENTIAL
- CIRCULATION
- COMMUNITY
- MEP
- PARKING/BIKES/LOADING
- LANDSCAPE

ARIA
DEVELOPMENT GROUP

CUNNINGHAM | QUILL ARCHITECTS

NOTE: INTERIOR LAYOUTS SHOWN ON BUILDING PLANS ARE SCHEMATIC. THOUGH CHANGES TO THESE LAYOUTS MAY OCCUR, THEY WILL NOT SIGNIFICANTLY IMPACT THE EXTERIOR ENVELOPE OF THE BUILDING.



A-13

Proposed Floor Plans
1315 Clifton Street NW

Washington, DC

February 6, 2015

