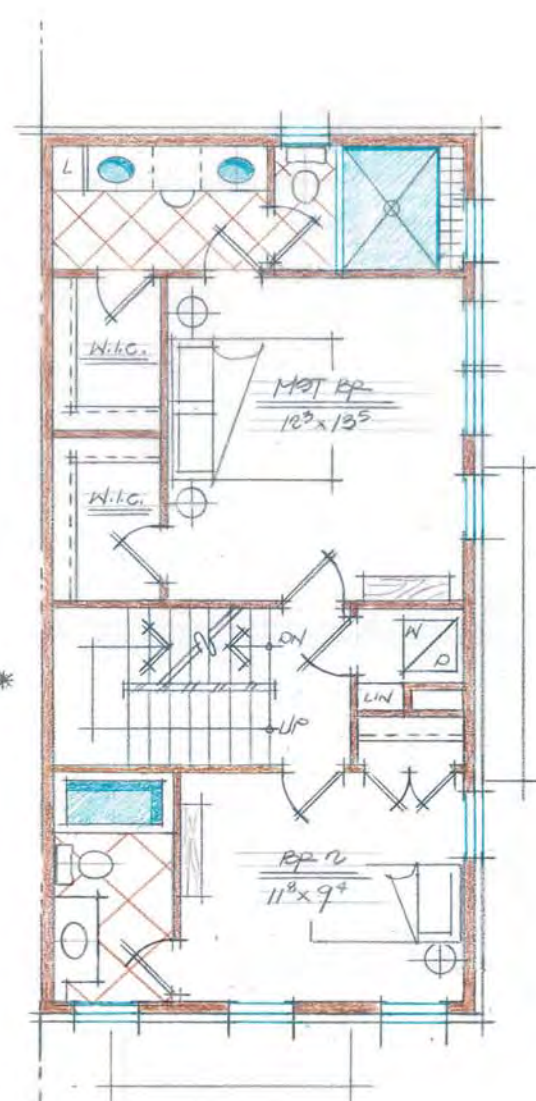


LOFT FLOOR PLAN

480 sq ft 9' cldg

\* NOTE:

W/ OPT. 1ST FLR. PLAN, REVERSE STAIR DIRECTIONS @ 2ND, 3RD, & LOFT FLRS.

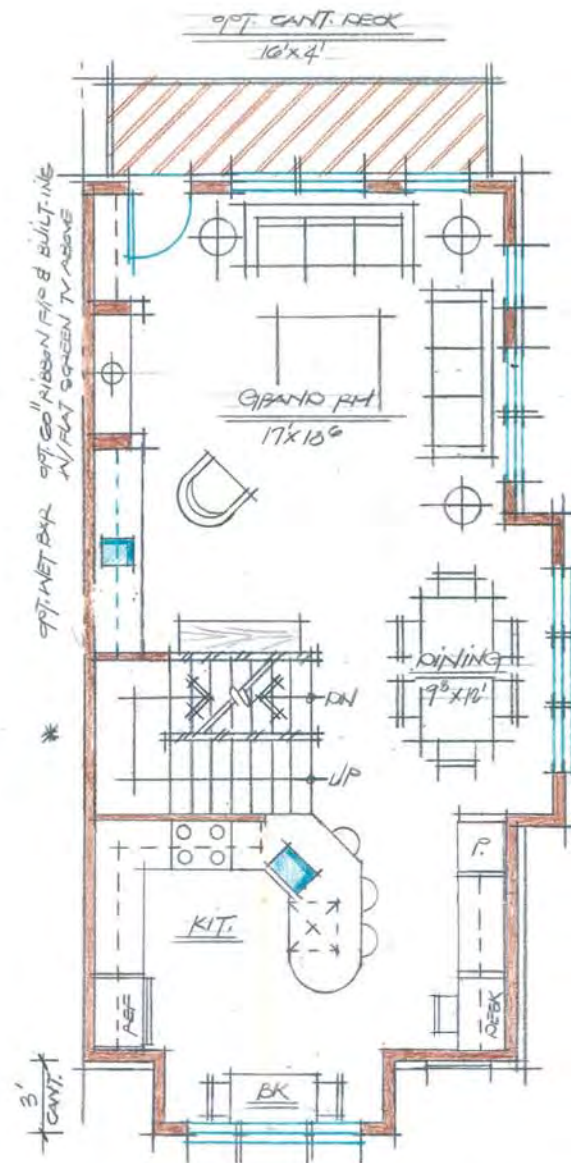


1<sup>ST</sup> FLOOR PLAN

660 sq ft 9' cldg

\* NOTE:

W/ OPT. 1ST FLR. PLAN, REVERSE STAIR DIRECTIONS @ 2ND, 3RD, & LOFT FLRS.

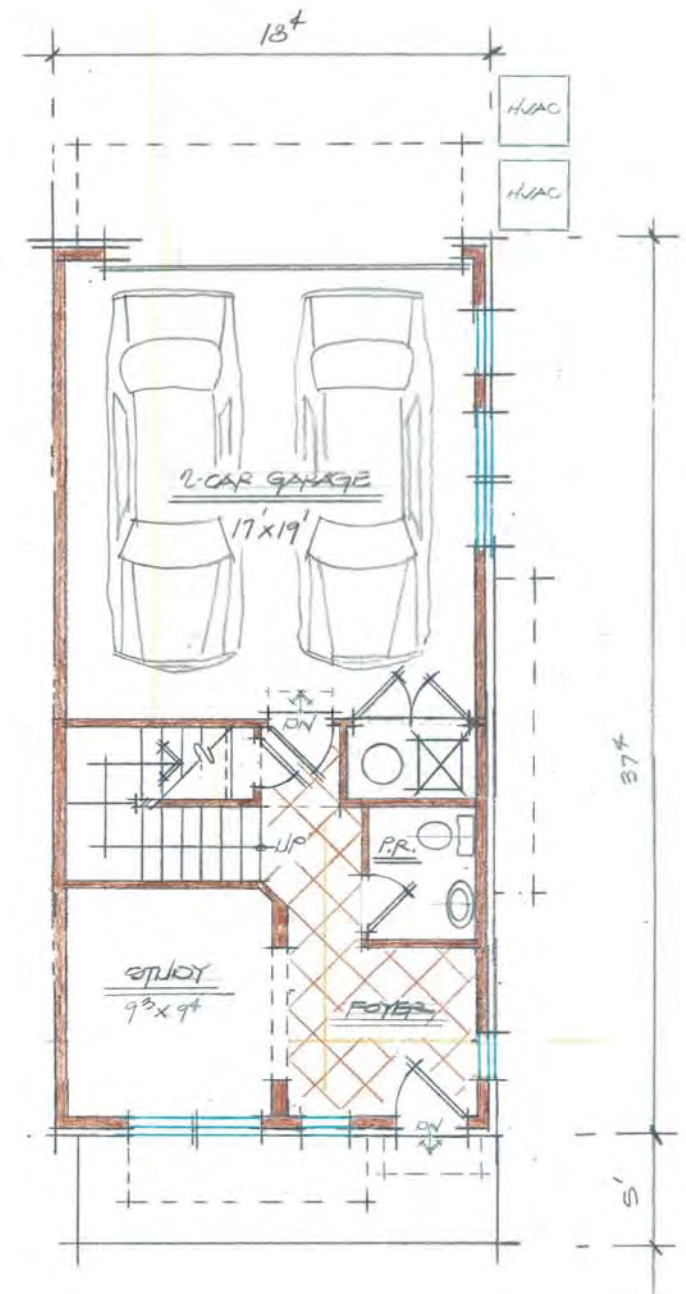


2<sup>ND</sup> FLOOR PLAN

717 sq ft 9' cldg

\* NOTE:

W/ OPT. 1ST FLR. PLAN, REVERSE STAIR DIRECTIONS @ 2ND, 3RD, & LOFT FLRS.



1<sup>ST</sup> FLOOR PLAN

3060 sq ft total = 2160 sq ft @ 9' cldg

INTERIOR PLAN LAYOUTS ARE CONCEPTUAL AND FOR ILLUSTRATIVE PURPOSES; FINAL LAYOUTS MAY VARY.



8521 Leesburg Pike Suite 700 Vienna, VA 22182  
P: 571.830.1800 | F: 571.830.1801 | www.lessarddesign.com

© 2013 Lessard Design Inc. expressly reserves its common law copyright and other property rights in these plans. These plans are not to be changed or copied in any form or matter whatsoever, nor are they to be assigned to any third party without the express written permission and consent of Lessard Design, Inc.

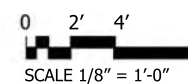
CONCEPTUAL FLOOR PLANS

BROOKLAND TOWNHOMES  
Washington, DC

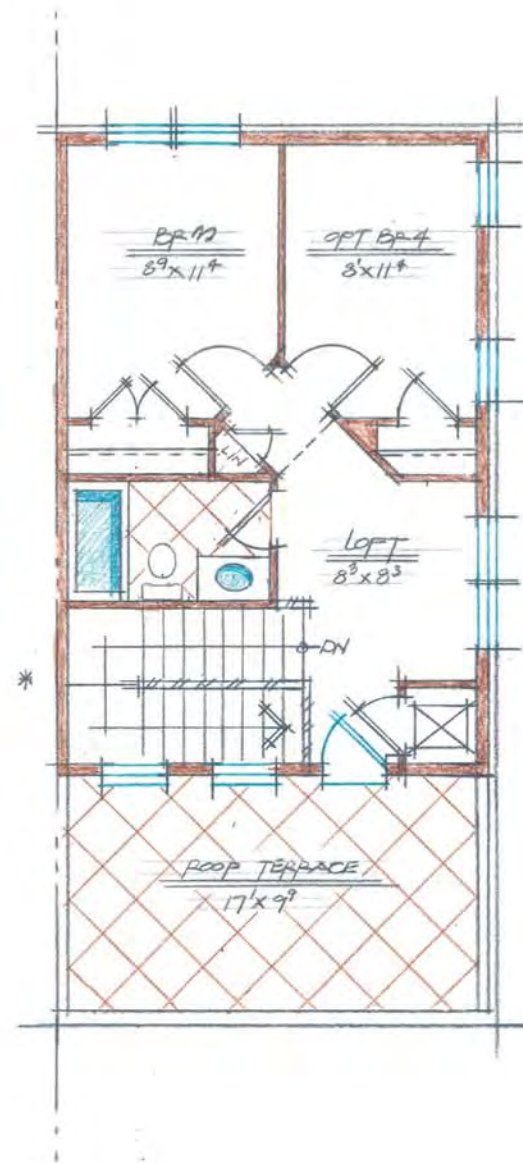
A.302

18' X 37' UNIT  
PUD APPLICATION

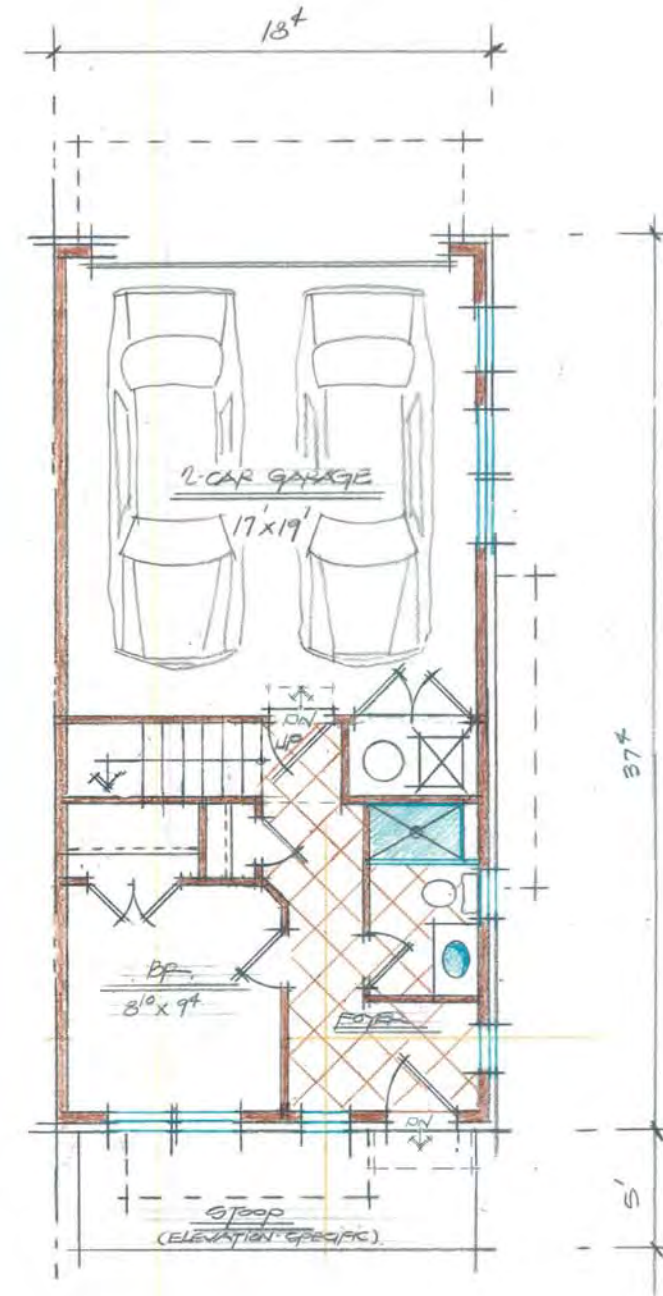
MADISON HOMES



01/09/15  
ZONING COMMISSION  
District of Columbia  
MHI.009A.00D  
CASE NO.15-02  
EXHIBIT NO.2B8



OPT.  
LOFT FLOOR PLAN  
48'0" x 9'6"



OPT  
1ST FLOOR PLAN  
18'0" x 37'0"

INTERIOR PLAN LAYOUTS ARE CONCEPTUAL AND FOR ILLUSTRATIVE PURPOSES; FINAL LAYOUTS MAY VARY.



8521 Leesburg Pike Suite 700 Vienna, VA 22182  
P: 571.830.1800 | F: 571.830.1801 | www.lessarddesign.com

© 2013 Lessard Design Inc. expressly reserves its common law copyright and other property rights in these plans. These plans are not to be changed or copied in any form or matter whatsoever, nor are they to be assigned to any third party without the express written permission and consent of Lessard Design, Inc.

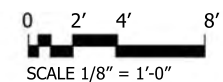
CONCEPTUAL FLOOR PLANS

BROOKLAND TOWNHOMES  
Washington, DC

A.303

18' X 37' UNIT  
PUD APPLICATION

MADISON HOMES



01/09/15  
MHI.009A.00D

NOTES: (1) FLEXIBILITY IS REQUESTED TO VARY THE FINAL SELECTION OF THE EXTERIOR MATERIALS WITHIN THE COLOR RANGES AND GENERAL MATERIAL TYPES PROPOSED, BASED ON AVAILABILITY AT THE TIME OF CONSTRUCTION WITHOUT REDUCING THE QUALITY OF MATERIALS. (2) FLEXIBILITY IS REQUESTED TO MAKE MINOR REFINEMENTS TO EXTERIOR DETAILS AND DIMENSIONS, INCLUDING SILLS, BASES, CORNICES, RAILINGS AND TRIM, AND ANY OTHER CHANGES TO COMPLY WITH THE BUILDING CODES OR THAT OTHERWISE NECESSARY TO OBTAIN FINAL BUILDING PERMIT.



- ① JAMES HARDIE - NAVAJO BEIGE
- ② GENERAL SHALE - CAMPUS BLEND
- ③ GENERAL SHALE - TIDEWATER
- ④ GENERAL SHALE - COMMONWEALTH
- ⑤ GENERAL SHALE - VIRGINIA HIGHLANDS BRICK
- ⑥ GENERAL SHALE - LARIMER
- ⑦ McCORMICK PAINT - GEORGETOWN GREEN
- ⑧ McCORMICK PAINT - OLD COLONIAL RED
- ⑨ McCORMICK PAINT - WYE OAK
- ⑩ FULL COVERED PORCH
- ⑪ 2' COVERED ENTRY
- ⑫ 2' COVERED ENTRY WITH METAL ROOF
- ⑬ 2' METAL AWNING



8521 Leesburg Pike Suite 700 Vienna, VA 22182  
P: 571.830.1800 | F: 571.830.1801 | www.lessarddesign.com

© 2013 Lessard Design Inc. expressly reserves its common law copyright and other property rights in these plans. These plans are not to be changed or copied in any form or matter whatsoever, nor are they to be assigned to any third party without the express written permission and consent of Lessard Design, Inc.

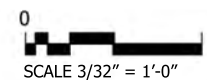
## MATERIAL DETAILS

PUD APPLICATION

**BROOKLAND TOWNHOMES**  
Washington, DC

MADISON HOMES

**A.400**



01/09/15  
MHI.009A.00D