



HIGH PROFILE SIDE ELEVATION

NOTES: (1) FLEXIBILITY IS REQUESTED TO VARY THE FINAL SELECTION OF THE EXTERIOR MATERIALS WITHIN THE COLOR RANGES AND GENERAL MATERIAL TYPES PROPOSED, BASED ON AVAILABILITY AT THE TIME OF CONSTRUCTION WITHOUT REDUCING THE QUALITY OF MATERIALS. (2) FLEXIBILITY IS REQUESTED TO MAKE MINOR REFINEMENTS TO EXTERIOR DETAILS AND DIMENSIONS, INCLUDING SILLS, BASES, CORNICES, RAILINGS AND TRIM, AND ANY OTHER CHANGES TO COMPLY WITH THE BUILDING CODES OR THAT OTHERWISE NECESSARY TO OBTAIN FINAL BUILDING PERMIT.



18' UNIT FRONT ELEVATION

STANDARD SIDE ELEVATION

NOTE: WINDOW LITE PATTERNS TO MATCH FRONT ELEVATION



STANDARD SIDE ELEVATION

14' UNIT FRONT ELEVATION

CONCEPTUAL UNIT ELEVATIONS

BROOKLAND TOWNHOMES

A.106

Washington, DC

MADISON HOMES

TYPICAL FRONT AND SIDE ELEVATIONS

PUD APPLICATION



8521 Leesburg Pike Suite 700 Vienna, VA 22182
P: 571.830.1800 | F: 571.830.1801 | www.lessarddesign.com

© 2013 Lessard Design Inc. expressly reserves its common law copyright and other property rights in these plans. These plans are not to be changed or copied in any form or matter whatsoever, nor are they to be assigned to any third party without the express written permission and consent of Lessard Design, Inc.

01/09/15
ZONING COMMISSION
District of Columbia
MH1.009A.00D
CASE NO.15-02
EXHIBIT NO.2B5
SCALE 3/32" = 1'-0"

NOTES: (1) FLEXIBILITY IS REQUESTED TO VARY THE FINAL SELECTION OF THE EXTERIOR MATERIALS WITHIN THE COLOR RANGES AND GENERAL MATERIAL TYPES PROPOSED, BASED ON AVAILABILITY AT THE TIME OF CONSTRUCTION WITHOUT REDUCING THE QUALITY OF MATERIALS. (2) FLEXIBILITY IS REQUESTED TO MAKE MINOR REFINEMENTS TO EXTERIOR DETAILS AND DIMENSIONS, INCLUDING SILLS, BASES, CORNICES, RAILINGS AND TRIM, AND ANY OTHER CHANGES TO COMPLY WITH THE BUILDING CODES OR THAT OTHERWISE NECESSARY TO OBTAIN FINAL BUILDING PERMIT.

NOTE: WINDOW LITE PATTERNS TO MATCH FRONT ELEVATION



FULL SIDING REAR ELEV



BRICK / SIDING REAR ELEV

18' UNIT REAR ELEVATION

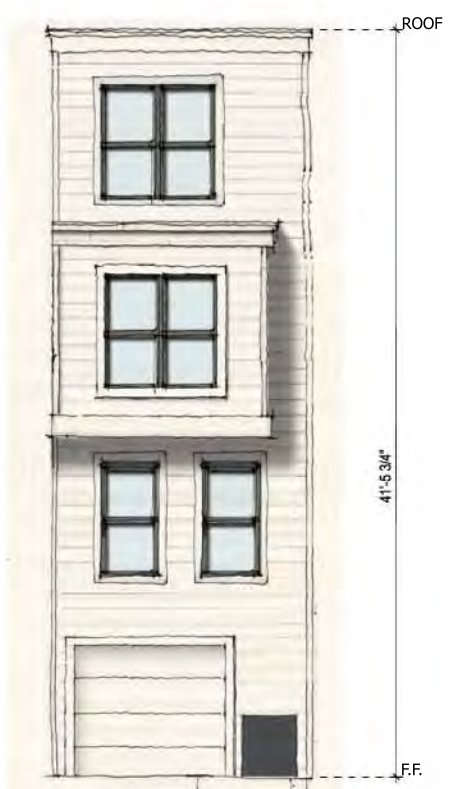


FULL SIDING REAR ELEV



BRICK / SIDING REAR ELEV

14' MARKET RATE UNIT ELEVATION



FULL SIDING ELEV

14' A.D.U. UNIT ELEVATION

CONCEPTUAL UNIT ELEVATIONS

BROOKLAND TOWNHOMES
Washington, DC

A.107

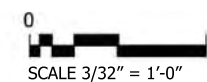


8521 Leesburg Pike Suite 700 Vienna, VA 22182
P: 571.830.1800 | F: 571.830.1801 | www.lessarddesign.com

© 2013 Lessard Design Inc. expressly reserves its common law copyright and other property rights in these plans. These plans are not to be changed or copied in any form or matter whatsoever, nor are they to be assigned to any third party without the express written permission and consent of Lessard Design, Inc.

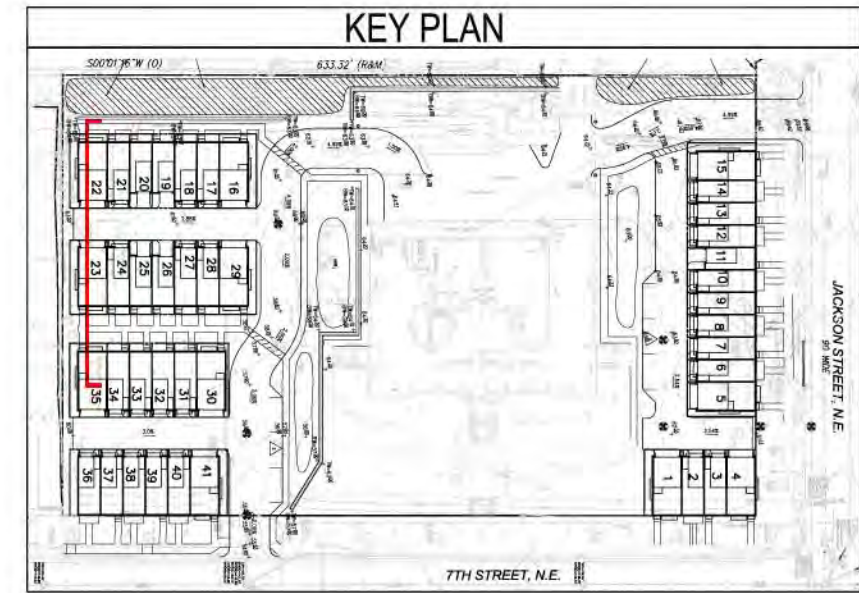
CONCEPTUAL REAR ELEVATIONS
PUD APPLICATION

MADISON HOMES



01/14/15
MHI.009A.00D

NOTES: (1) FLEXIBILITY IS REQUESTED TO VARY THE FINAL SELECTION OF THE EXTERIOR MATERIALS WITHIN THE COLOR RANGES AND GENERAL MATERIAL TYPES PROPOSED, BASED ON AVAILABILITY AT THE TIME OF CONSTRUCTION WITHOUT REDUCING THE QUALITY OF MATERIALS. (2) FLEXIBILITY IS REQUESTED TO MAKE MINOR REFINEMENTS TO EXTERIOR DETAILS AND DIMENSIONS, INCLUDING SILLS, BASES, CORNICES, RAILINGS AND TRIM, AND ANY OTHER CHANGES TO COMPLY WITH THE BUILDING CODES OR THAT OTHERWISE NECESSARY TO OBTAIN FINAL BUILDING PERMIT.



NOTE: SEE CIVIL FOR FURTHER DIMENSIONING



8521 Leesburg Pike Suite 700 Vienna, VA 22182
P: 571.830.1800 | F: 571.830.1801 | www.lessarddesign.com

© 2013 Lessard Design Inc. expressly reserves its common law copyright and other property rights in these plans. These plans are not to be changed or copied in any form or matter whatsoever, nor are they to be assigned to any third party without the express written permission and consent of Lessard Design, Inc.

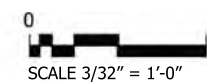
CONCEPTUAL ELEVATIONS

CONCEPTUAL ALLEY ELEVATION
PUD APPLICATION

BROOKLAND TOWNHOMES
Washington, DC

MADISON HOMES

A.108



01/22/15
MHI.009A.00D