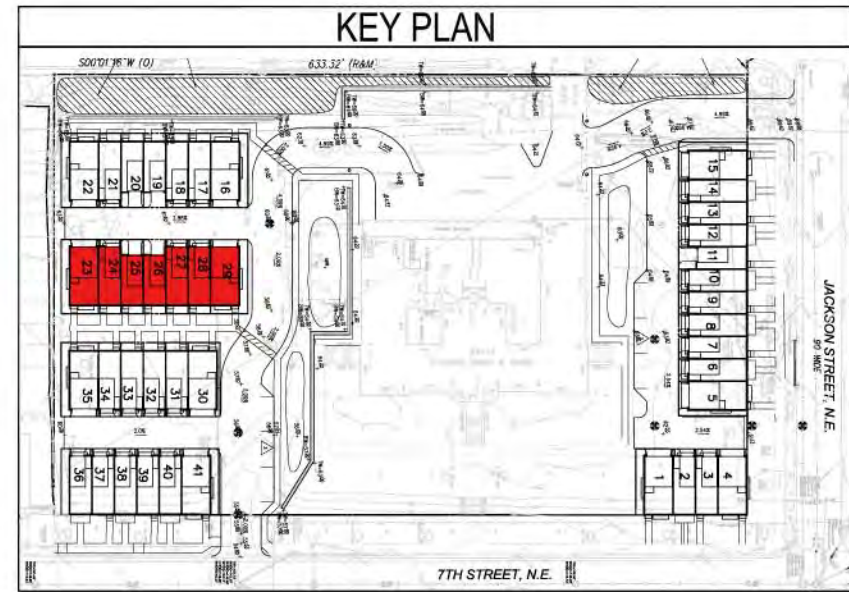


NOTES: (1) FLEXIBILITY IS REQUESTED TO VARY THE FINAL SELECTION OF THE EXTERIOR MATERIALS WITHIN THE COLOR RANGES AND GENERAL MATERIAL TYPES PROPOSED, BASED ON AVAILABILITY AT THE TIME OF CONSTRUCTION WITHOUT REDUCING THE QUALITY OF MATERIALS. (2) FLEXIBILITY IS REQUESTED TO MAKE MINOR REFINEMENTS TO EXTERIOR DETAILS AND DIMENSIONS, INCLUDING SILLS, BASES, CORNICES, RAILINGS AND TRIM, AND ANY OTHER CHANGES TO COMPLY WITH THE BUILDING CODES OR THAT OTHERWISE NECESSARY TO OBTAIN FINAL BUILDING PERMIT.



8521 Leesburg Pike Suite 700 Vienna, VA 22182  
P: 571.830.1800 | F: 571.830.1801 | www.lessarddesign.com

© 2013 Lessard Design Inc. expressly reserves its common law copyright and other property rights in these plans. These plans are not to be changed or copied in any form or matter whatsoever, nor are they to be assigned to any third party without the express written permission and consent of Lessard Design, Inc.

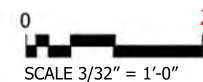
## CONCEPTUAL ELEVATIONS

BUILDING 4 - LOTS 23-29  
PUD APPLICATION

**BROOKLAND TOWNHOMES**  
Washington, DC

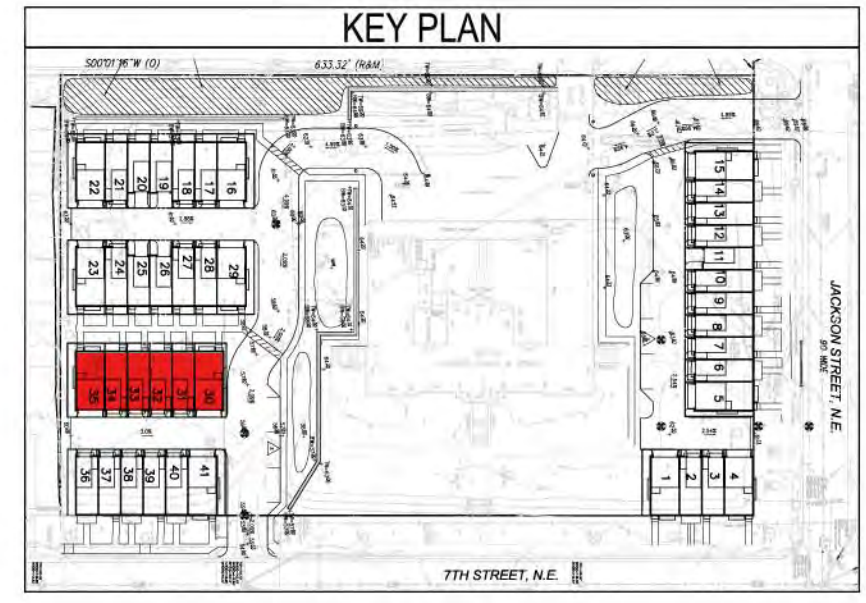
MADISON HOMES

**A.103**



ZONING COMMISSION  
District of Columbia  
01/22/15  
MHI.009A.00D  
CASE NO.15-02  
EXHIBIT NO.2B4

NOTES: (1) FLEXIBILITY IS REQUESTED TO VARY THE FINAL SELECTION OF THE EXTERIOR MATERIALS WITHIN THE COLOR RANGES AND GENERAL MATERIAL TYPES PROPOSED, BASED ON AVAILABILITY AT THE TIME OF CONSTRUCTION WITHOUT REDUCING THE QUALITY OF MATERIALS. (2) FLEXIBILITY IS REQUESTED TO MAKE MINOR REFINEMENTS TO EXTERIOR DETAILS AND DIMENSIONS, INCLUDING SILLS, BASES, CORNICES, RAILINGS AND TRIM, AND ANY OTHER CHANGES TO COMPLY WITH THE BUILDING CODES OR THAT OTHERWISE NECESSARY TO OBTAIN FINAL BUILDING PERMIT.



8521 Leesburg Pike Suite 700 Vienna, VA 22182  
P: 571.830.1800 | F: 571.830.1801 | www.lessarddesign.com

© 2013 Lessard Design Inc. expressly reserves its common law copyright and other property rights in these plans. These plans are not to be changed or copied in any form or matter whatsoever, nor are they to be assigned to any third party without the express written permission and consent of Lessard Design, Inc.

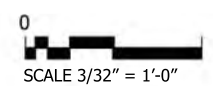
**CONCEPTUAL ELEVATIONS**

**BUILDING 5 - LOTS 30-35**  
PUD APPLICATION

**BROOKLAND TOWNHOMES**  
Washington, DC

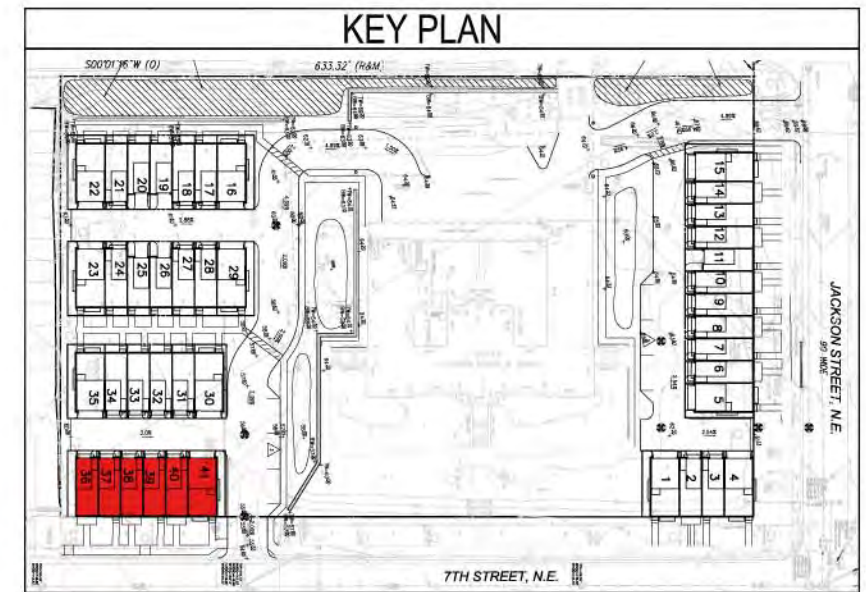
MADISON HOMES

**A.104**



01/22/15  
MHI.009A.00D

NOTES: (1) FLEXIBILITY IS REQUESTED TO VARY THE FINAL SELECTION OF THE EXTERIOR MATERIALS WITHIN THE COLOR RANGES AND GENERAL MATERIAL TYPES PROPOSED, BASED ON AVAILABILITY AT THE TIME OF CONSTRUCTION WITHOUT REDUCING THE QUALITY OF MATERIALS. (2) FLEXIBILITY IS REQUESTED TO MAKE MINOR REFINEMENTS TO EXTERIOR DETAILS AND DIMENSIONS, INCLUDING SILLS, BASES, CORNICES, RAILINGS AND TRIM, AND ANY OTHER CHANGES TO COMPLY WITH THE BUILDING CODES OR THAT OTHERWISE NECESSARY TO OBTAIN FINAL BUILDING PERMIT.



8521 Leesburg Pike Suite 700 Vienna, VA 22182  
P: 571.830.1800 | F: 571.830.1801 | www.lessarddesign.com

© 2013 Lessard Design Inc. expressly reserves its common law copyright and other property rights in these plans. These plans are not to be changed or copied in any form or matter whatsoever, nor are they to be assigned to any third party without the express written permission and consent of Lessard Design, Inc.

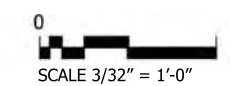
**CONCEPTUAL ELEVATIONS**

**BROOKLAND TOWNHOMES**  
Washington, DC

**A.105**

**BUILDING 6 - LOTS 36-41**  
PUD APPLICATION

MADISON HOMES



01/22/15  
MHI.009A.00D