



Facade 3
(East)

Facade 2
(Middle)

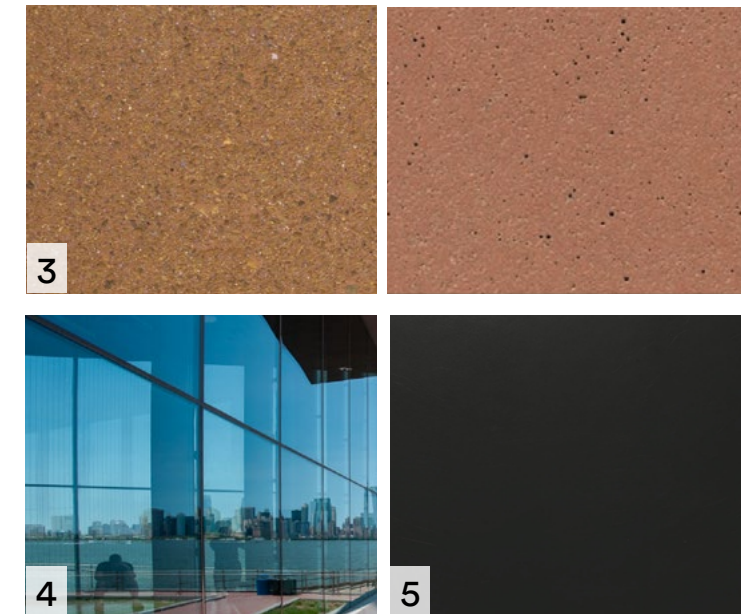
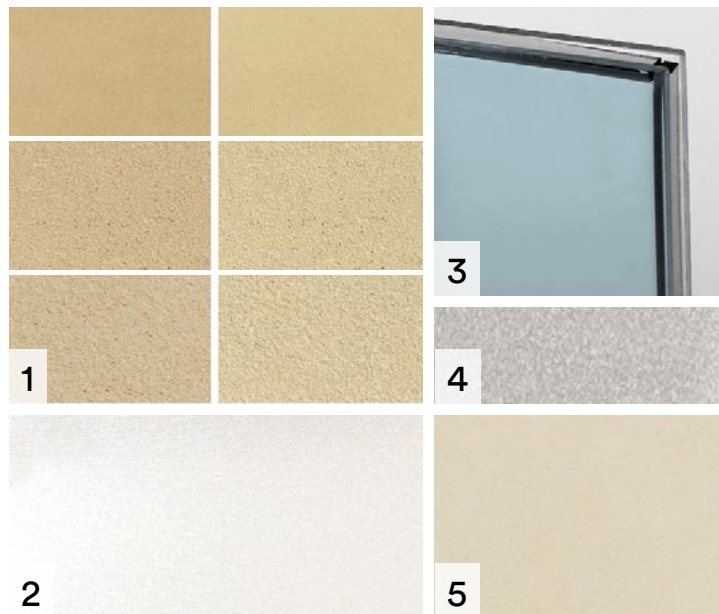
Facade 1
(West)

Facade 1 (West)

Facade 2 (Middle)

Facade 3 (East)

Common Materials



West Building Materials:

1. Cement Panel 1 - Buff Color
2. Cement Panel Accent 1 - Pearl Color
3. Vision Glass 1 - Blue Color
4. Window Frame 1 - Silver Color
5. Balcony Skim Coat 1 - Sand Color

Middle Building Materials:

1. Cement Panel 2 - Clay Color
2. Cement Panel Accent 2 - Clay Color
3. Vision Glass 2 - Green Color
4. Window Frame 2 - Bronze Color
5. Balcony Skim Coat 2 - Plum Color

East Building Materials:

1. Cement Panel 3 - Rust Color
2. Cement Panel Accent 3 - Gray Color
3. Vision Glass 3 - Gray Color
4. Window Frame 3 - Copper Color
5. Balcony Skim Coat 3 - Conc. Gray Color

Common & Podium Materials:

1. Exposed Concrete
2. Integrated Green Wall System
3. Ceramic Panel
4. Aluminum Storefront System
5. Powder Coated Metal - Charcoal

*Flexibility is requested to vary the final selection of exterior materials within the color ranges and general material types proposed, based on availability at the time of construction. Quality of materials will not be reduced.



1. Solid Wall Cladding
Cement Panel 1 - Buff Color
2. Accent Grid
Cement Panel Accent 1 - Pearl Color
3. Vision Glass
Color 1 - Blue Color
4. Window Frame
Color 1 - Silver Color
5. Balcony Soffit
Skim Coat 1 - Sand Color





1. Solid Wall Cladding
Cement Panel 2 - Clay Color
2. Edge Cover & Vertical Grid
Cement Panel Accent 2 - Clay Color
3. Vision Glass
Color 2 - Green Color
4. Window Frame
Color 2 - Bronze Color
5. Balcony Soffit
Skim Coat 2 - Plum Color



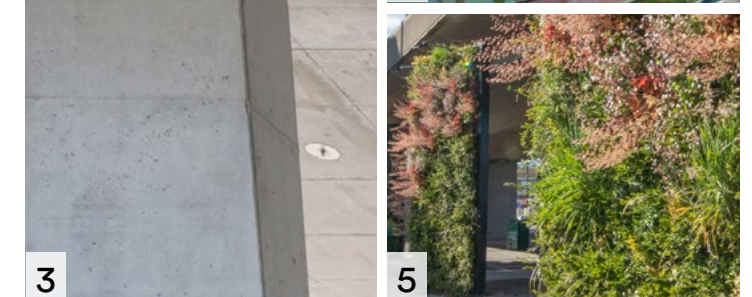
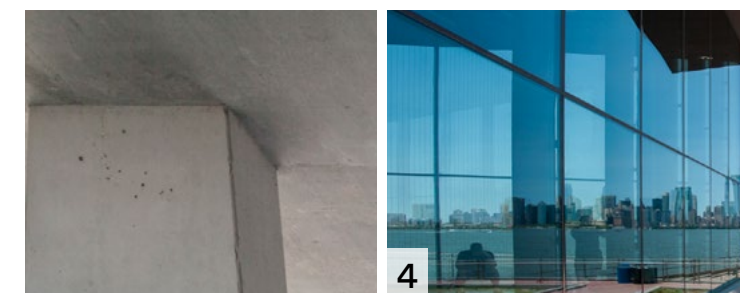
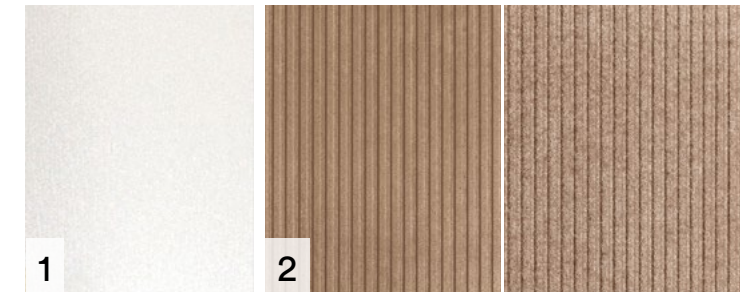


1. Solid Wall Cladding
Cement Panel 3 - Rust Color
2. Edge Cover
Cement Panel Accent 3 - Gray Color
3. Vision Glass
Color 3 - Gray Color
4. Window Frame
Color 3 - Copper Color
5. Balcony Soffit
Skim Coat 3 - Concrete Gray Color



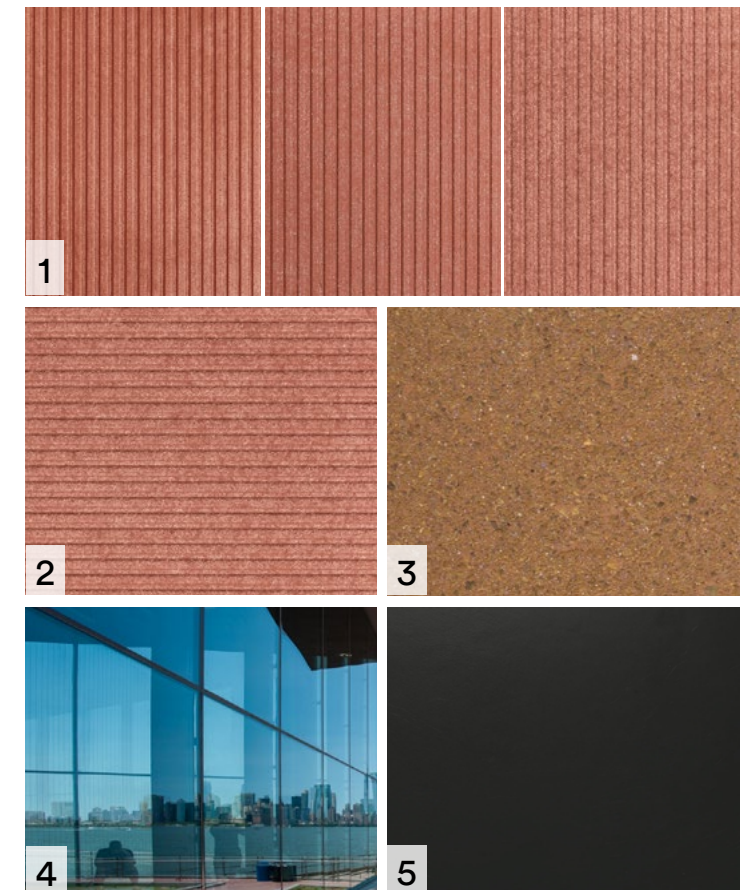


1. Fascia
Metal Panel 1 - Pearl Color
2. Soffit
Cement Panel 1 - Buff Color
3. Vertical Elements
Architectural Concrete
4. Glazing System
Aluminum Storefront
5. Infill
Integrated Green Wall



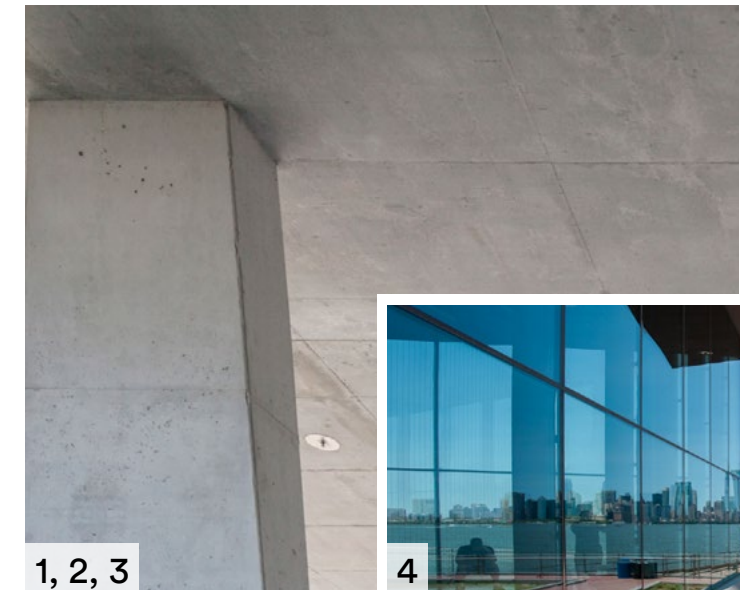


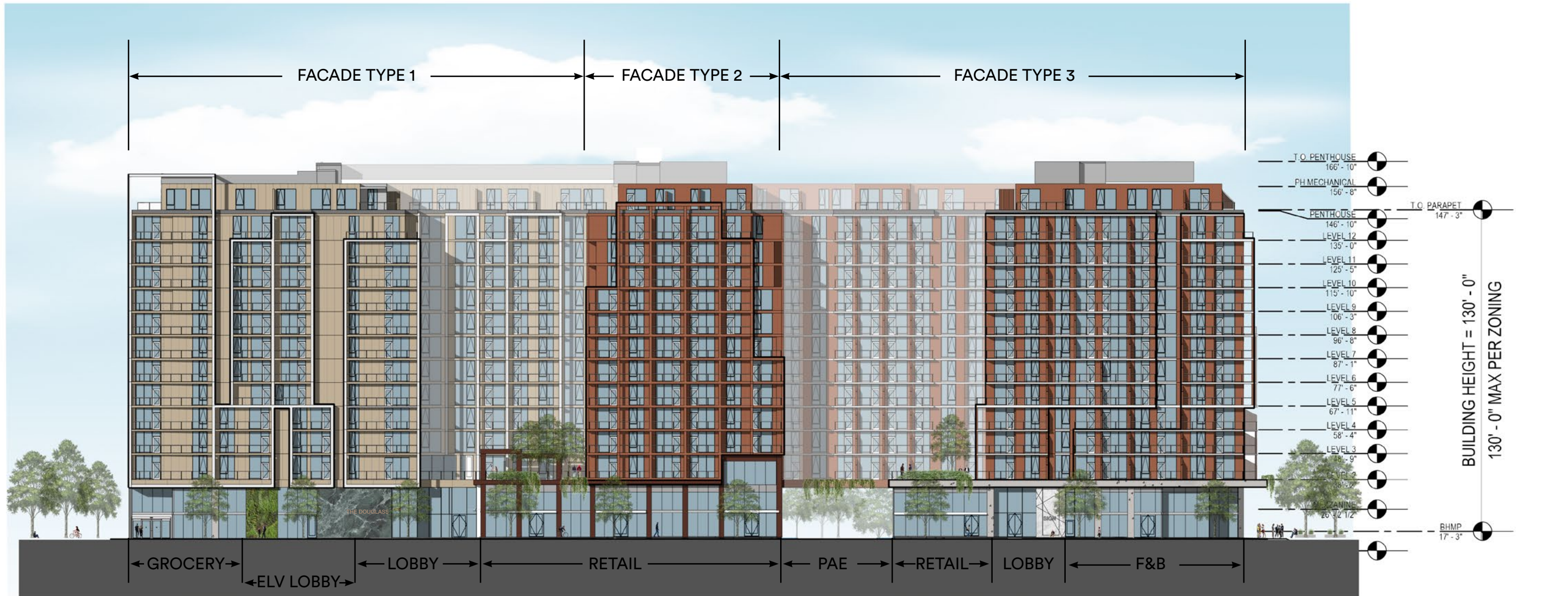
- 1. Fascia
Cement Panel 2 - Clay Color
- 2. Soffit
Cement Panel 2 - Clay Color
- 3. Vertical Elements
Ceramic Panel
- 4. Glazing System
Aluminum Storefront
- 5. Louvers & Canopy
Metal 1 - Charcoal Color





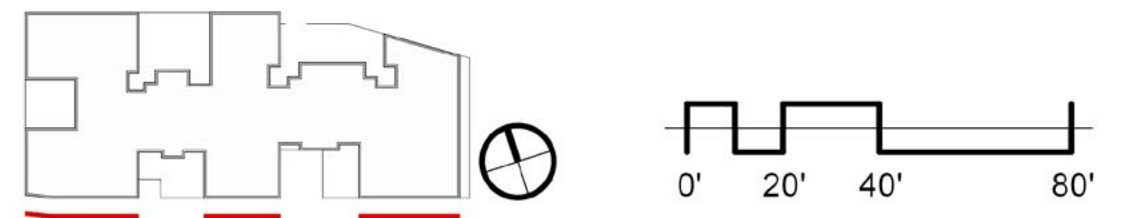
1. Fascia
Exposed Concrete
2. Soffit
Exposed Concrete
3. Vertical Elements
Exposed Concrete
4. Glazing System
Aluminum Storefront
5. Infill
Integrated Green Wall

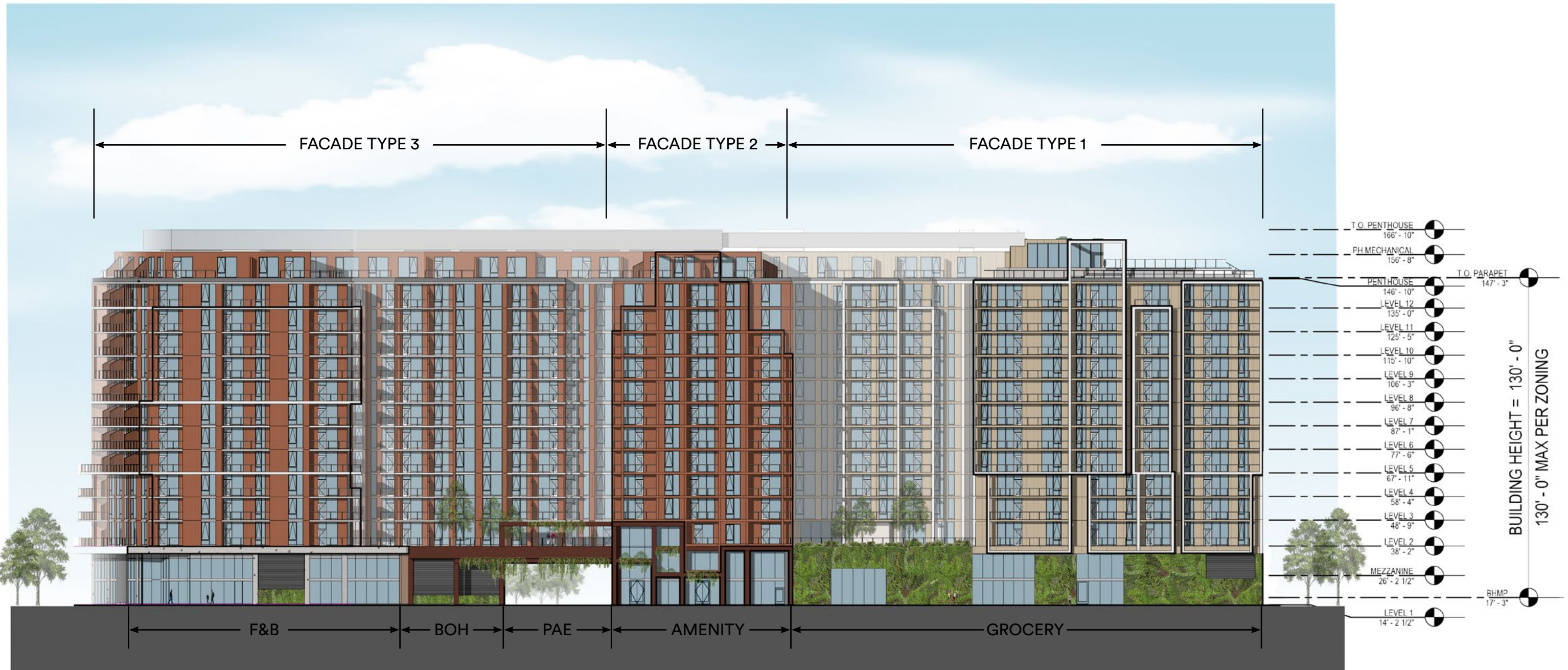




*Ground floor retail elevations are illustrative and intended to describe the character and scale for the base of the building. The actual retail elevations will be developed by individual retail tenants, approved by the building owner, and may change over time to accommodate leasing cycles.

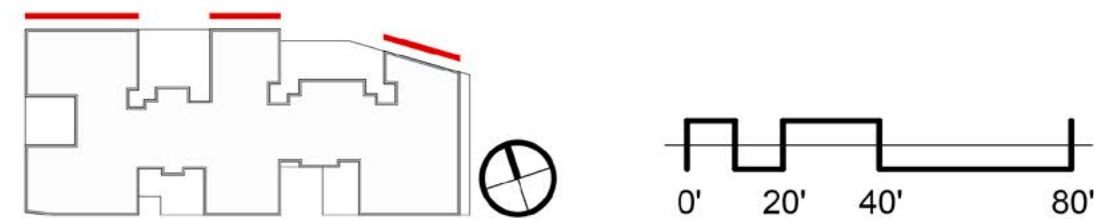
* Exhaust vents to be integrated into final façade designs NO through-wall HVAC units will be on building elevations.

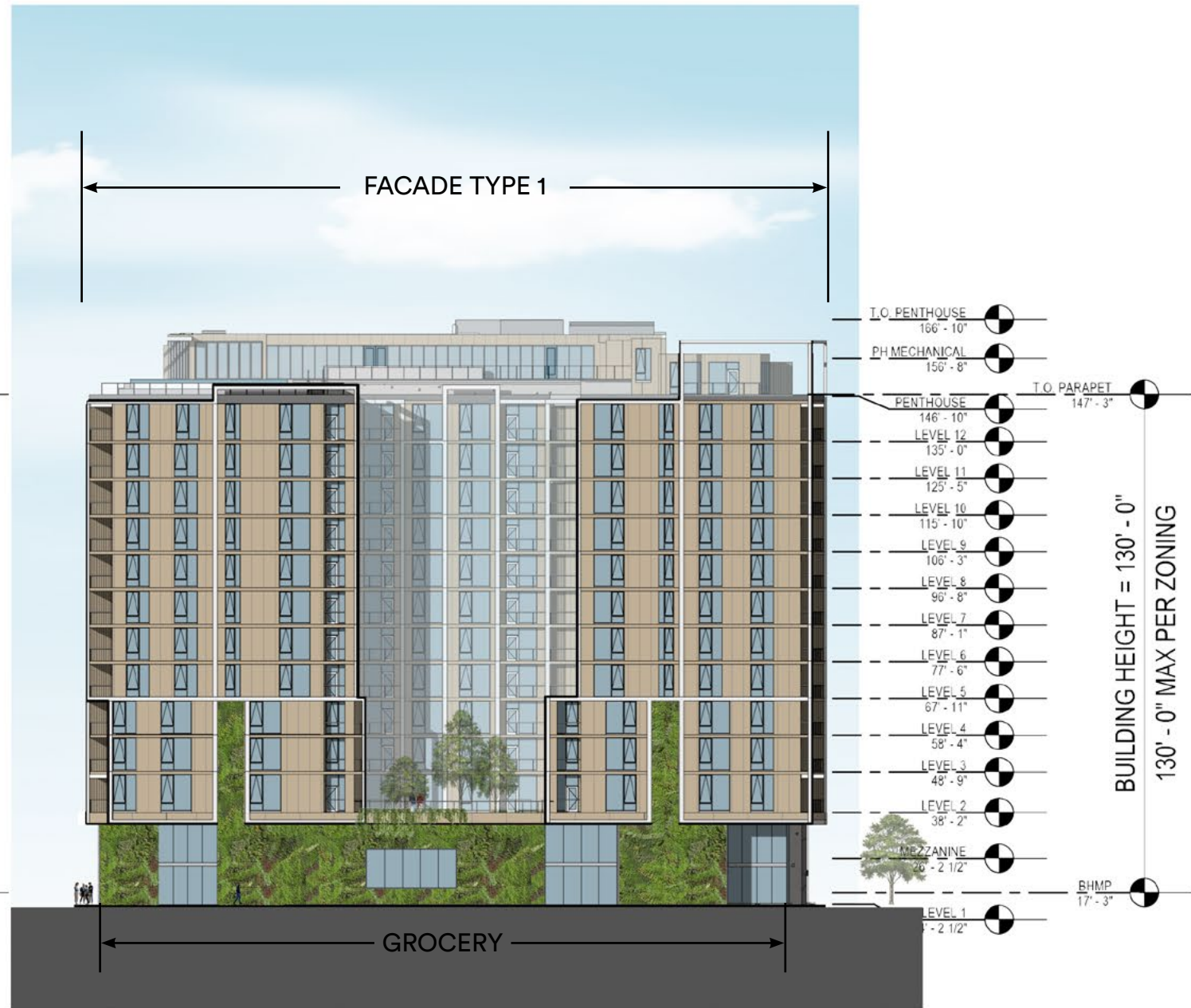
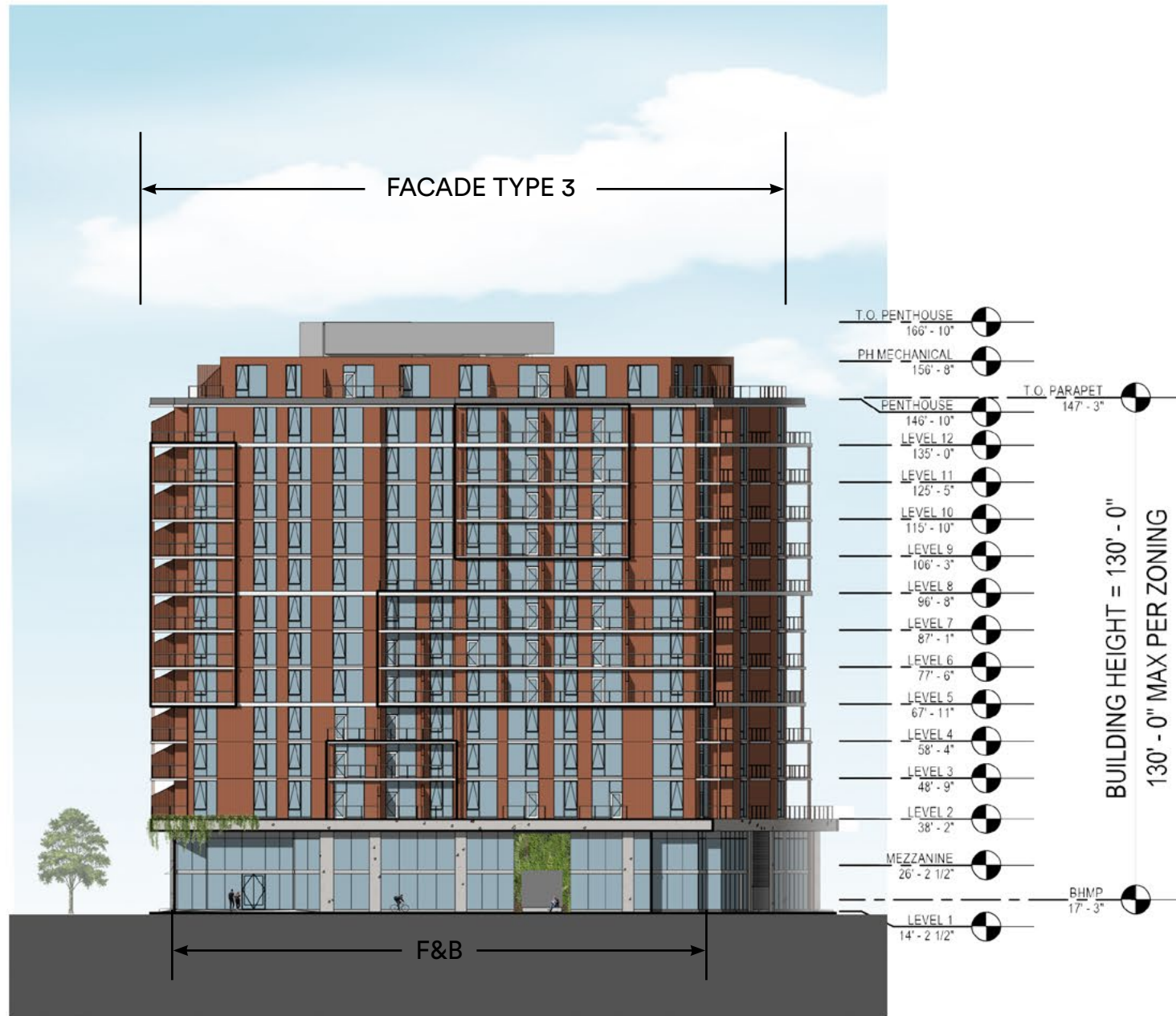




*Ground floor retail elevations are illustrative and intended to describe the character and scale for the base of the building. The actual retail elevations will be developed by individual retail tenants, approved by the building owner, and may change over time to accommodate leasing cycles.

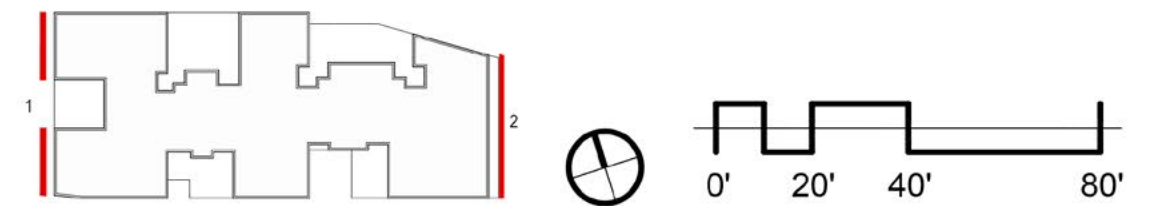
* Exhaust vents to be integrated into final façade designs NO through-wall HVAC units will be on building elevations.

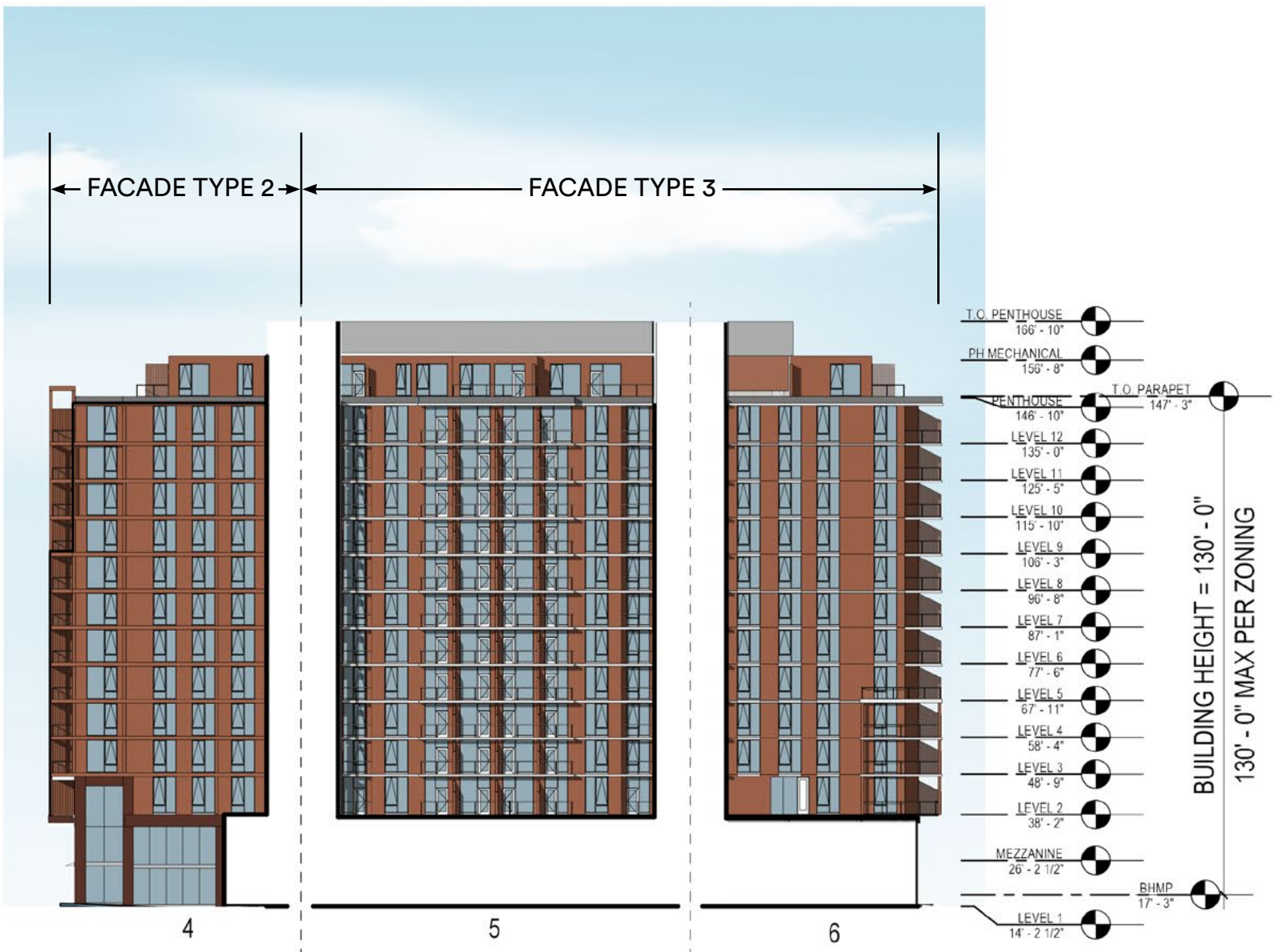




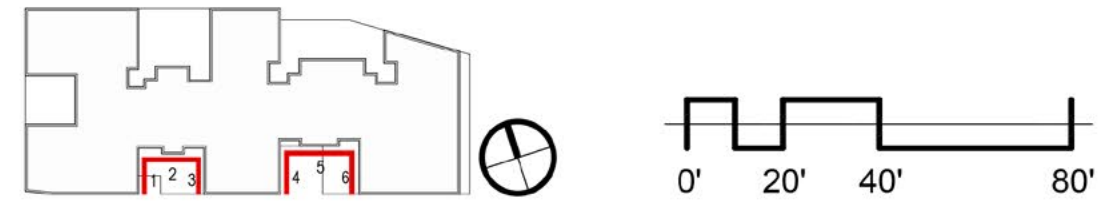
*Ground floor retail elevations are illustrative and intended to describe the character and scale for the base of the building. The actual retail elevations will be developed by individual retail tenants, approved by the building owner, and may change over time to accommodate leasing cycles.

* Exhaust vents to be integrated into final façade designs NO through-wall HVAC units will be on building elevations.





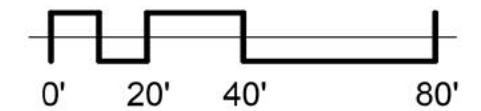
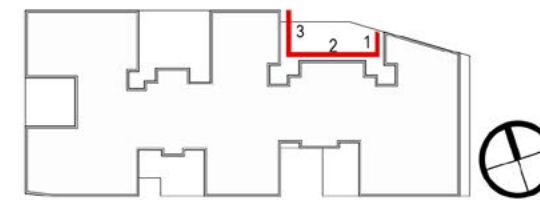
*Ground floor retail elevations are illustrative and intended to describe the character and scale for the base of the building. The actual retail elevations will be developed by individual retail tenants, approved by the building owner, and may change over time to accommodate leasing cycles.
 * Exhaust vents to be integrated into final façade designs NO through-wall HVAC units will be on building elevations.

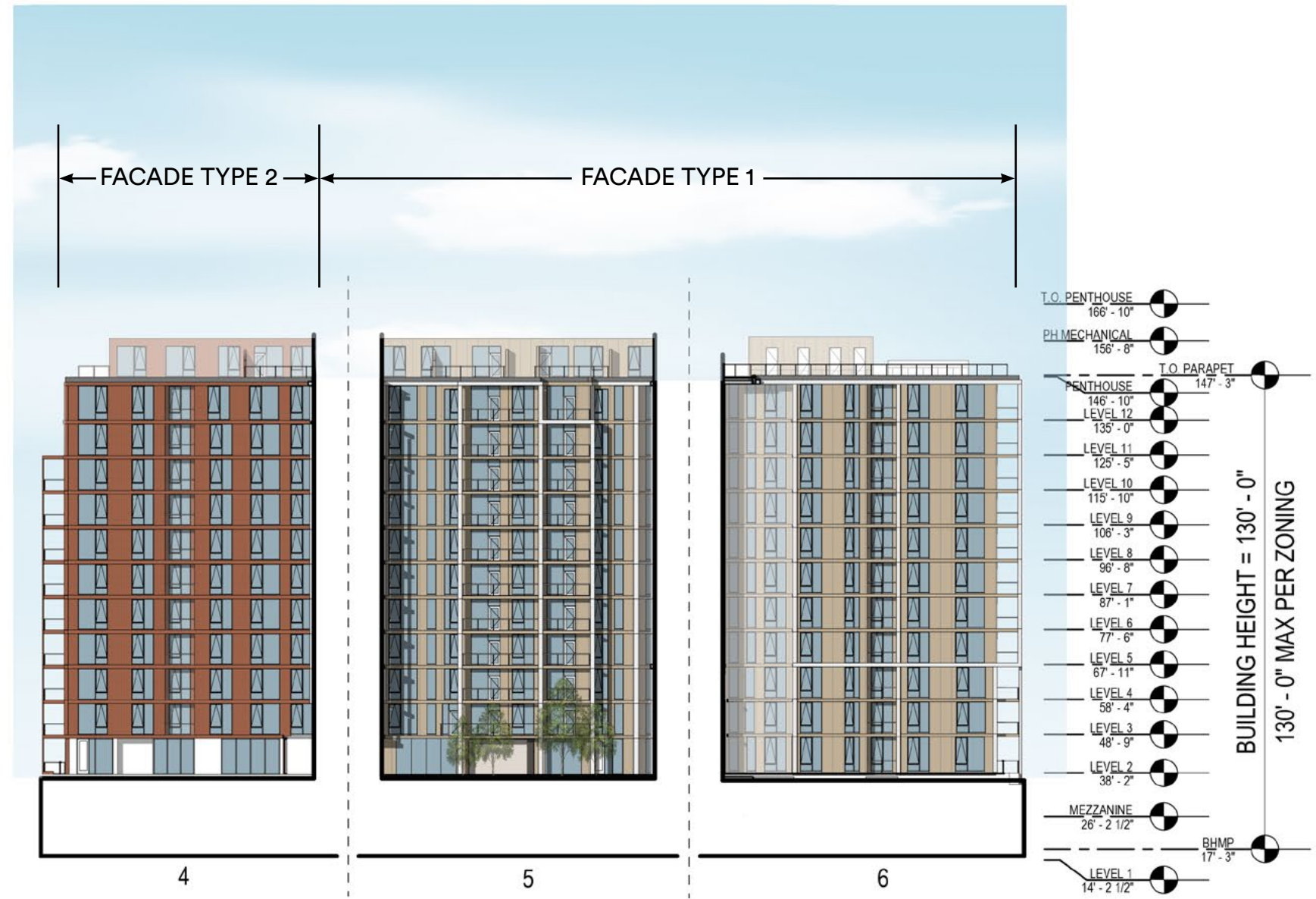
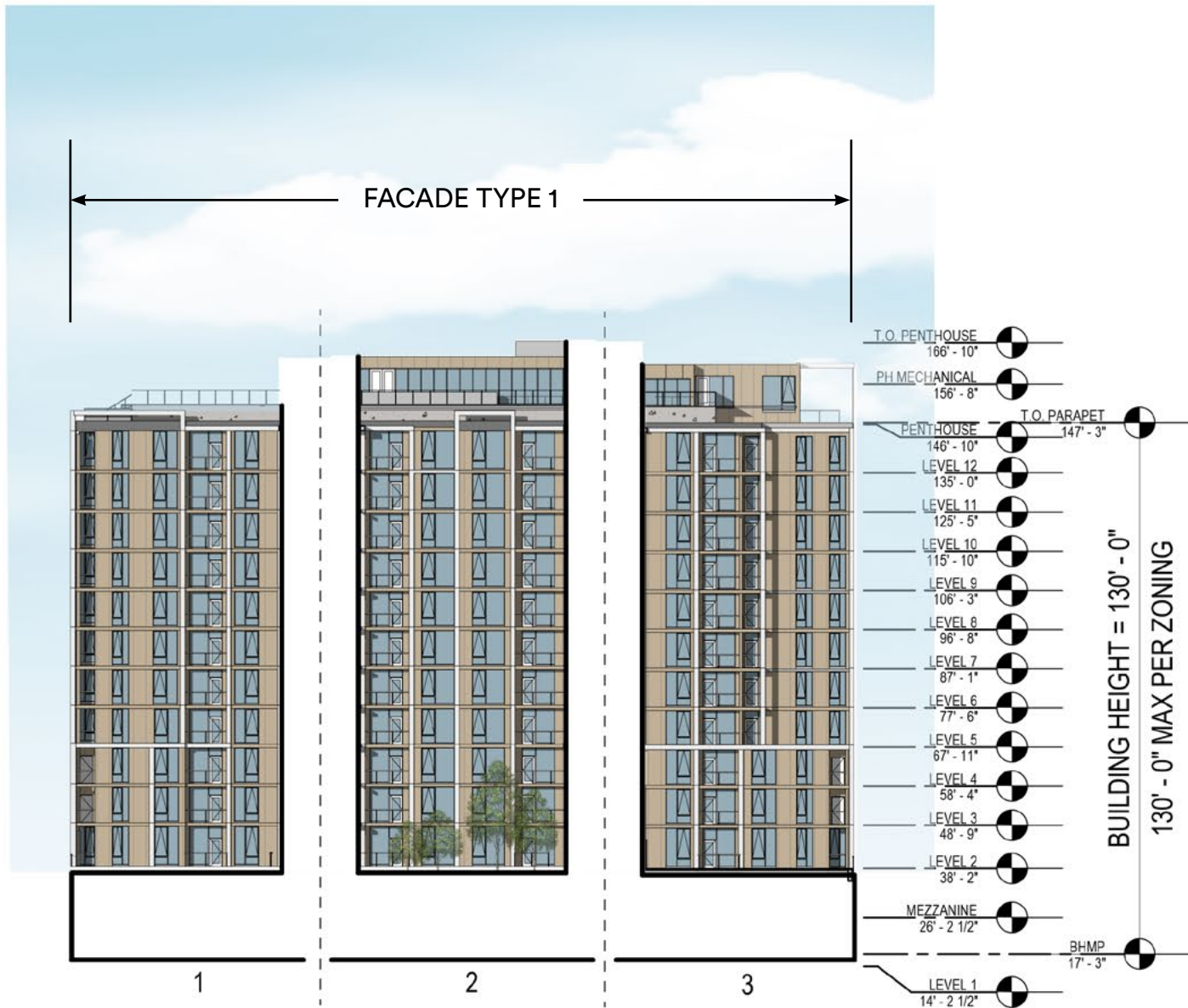




*Ground floor retail elevations are illustrative and intended to describe the character and scale for the base of the building. The actual retail elevations will be developed by individual retail tenants, approved by the building owner, and may change over time to accommodate leasing cycles.

* Exhaust vents to be integrated into final façade designs NO through-wall HVAC units will be on building elevations.





*Ground floor retail elevations are illustrative and intended to describe the character and scale for the base of the building. The actual retail elevations will be developed by individual retail tenants, approved by the building owner, and may change over time to accommodate leasing cycles.

* Exhaust vents to be integrated into final façade designs NO through-wall HVAC units will be on building elevations.

