

RESIDENTIAL LEVEL3
AFFORDABLE HOUSING

RESIDENTIAL LEVEL4
AFFORDABLE HOUSING

RESIDENTIAL LEVEL5
AFFORDABLE HOUSING

RESIDENTIAL LEVEL6
AFFORDABLE HOUSING

RESIDENTIAL LEVEL7
AFFORDABLE HOUSING

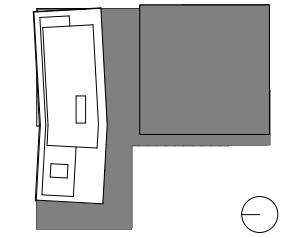
RESIDENTIAL LEVEL8
AFFORDABLE HOUSING

RESIDENTIAL LEVEL9
AFFORDABLE HOUSING

SCALE: 1"= 45'-0"

NOTE: THE INTERIOR PARTITION LOCATIONS, THE NUMBER, SIZE, AND LOCATIONS OF UNITS, STAIRS, AND ELEVATORS ARE PRELIMINARY AND SHOWN FOR ILLUSTRATIVE PURPOSES ONLY. THE FINAL LAYOUTS MAY VARY.

	Two Bedroom	Two Bedroom Affordable	One Bedroom	One Bedroom Affordable	Studio	Studio Affordable	Total
% mix	23.5%	22%	55%	56%	21.5%	22%	100%
Level 3	1	1	1	1	0	0	4
Level 4	2	2	5	5	2	2	18
Level 5	2	2	5	5	2	2	18
Level 6	2	2	5	5	2	2	18
Level 7	2	2	6	4	2	2	18
Level 8	2	2	6	4	2	2	18
Level 9	4	0	6	4	3	1	18
Level 10	4	0	10	0	4	0	18
Level 11	4	0	10	0	4	0	18
Level 12	4	0	10	0	4	0	18
Totals	27	11	64	28	25	11	166



KEYPLAN

- Program Legend**
- RESIDENTIAL CIRCULATION
 - BOH
 - SERVICE ELEVATOR
 - VERTICAL CIRCULATION
 - STUDIO
 - 1 BEDROOM
 - 2 BEDROOM
 - AH STUDIO
 - AH 1 BEDROOM
 - AH 2 BEDROOM

AFFORDABLE HOUSING
DIAGRAM LEGEND

AFFORDABLE HOUSING MATRIX

NOTE: FINAL LOCATION OF AFFORDABLE HOUSING UNITS MAY BE ADJUSTED TO REFLECT THE FINAL UNIT LAYOUT, COUNT, AND MIX, PROVIDED THAT THE DISTRIBUTION OF AFFORDABLE UNITS BY FLOOR WILL REMAIN CONSISTENT WITH THE PLANS WITHIN THE SAME GENERAL AREA AND TYPE.

Affordable Housing: Location Plans

PUD Stage II Filing: Capitol Crossing III LLC and Capitol Crossing IV LLC: Square 566, Lots 861-862 (part of Record Lot 50)