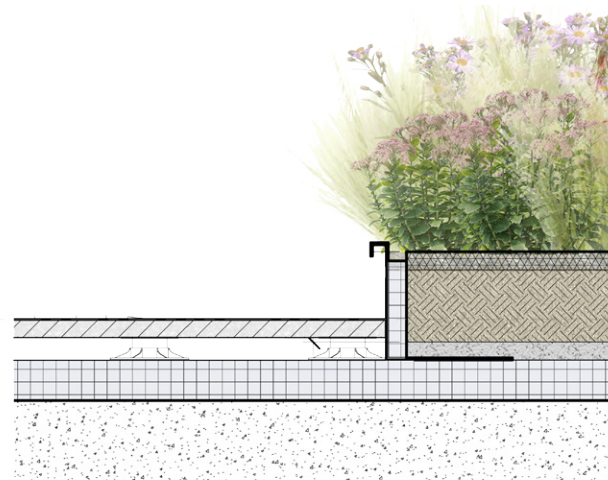
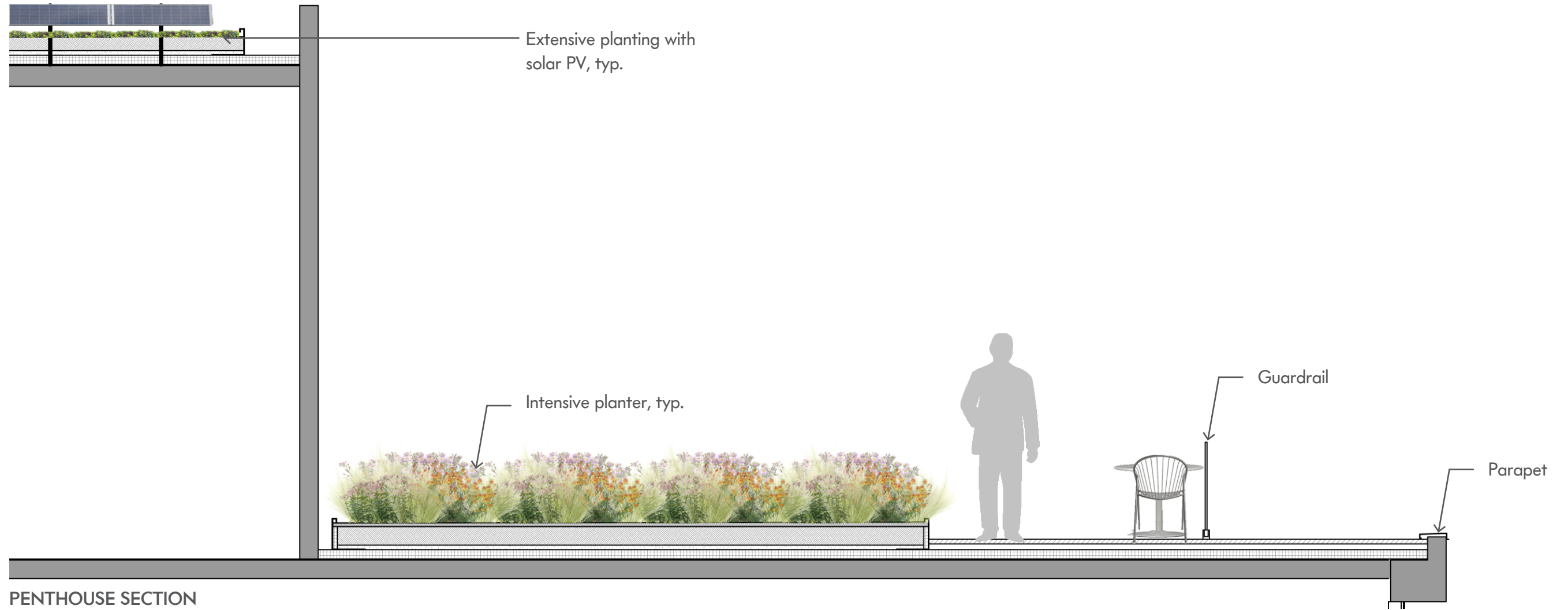
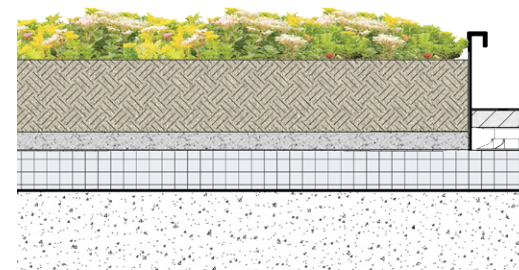


# LANDSCAPE PETHOUSE SECTIONS



TYPICAL INTENSIVE PLANTER



TYPICAL EXTENSIVE PLANTER  
WITH SOLAR PV



# LANDSCAPE PLANT SPECIFICATIONS





# LANDSCAPE PLANT SPECIFICATIONS

## BOTANICAL NAME / COMMON NAME

### SHRUBS

- Danae racemosa* / Poet`s Laurel
- Fatsia japonica* / Japanese Fatsia
- Hydrangea arborescens* 'Annabelle' / Smooth Hydrangea
- Hydrangea petiolaris* / Climbing Hydrangea
- Sarcococca hookeriana* var *humilis* / Himalayan Sweet Box
- Taxus baccata* 'Repandens' / Yew Conifer

### PERENNIALS

- Achillea millefolium* 'Terra Cotta' / Terra Cotta Common Yarrow
- Astilbe japonica* 'Deutschland' / White Astilbe
- Asarum splendens* / Chinese Ginger
- Brunnera macrophylla* / Siberian Bugloss
- Helleborus niger* / Lenten Rose
- Helleborus orientalis* / Lenten Rose
- Heuchera villosa* 'Autumn Bride' / Coral Bells
- Hosta lancifolia* / Narrow-leaved Hosta
- Iris cristata* / Dwarf Crested Iris
- Rohdea japonica* / Sacred Lily
- Tiarella cordifolia* / Foam Flower

### ORNAMENTAL GRASSES

- Carex eburnea* / Ivory Sedge
- Carex morrowii* 'Ice Dance' / Variegated Sedge
- Hakonechloa macra* 'Aureola' / Japanese Forest Grass
- Nassella tenuissima* / Texas Needle Grass

### FERNS

- Athyrium nipponicum* var. *pictum* / Japanese Painted Fern
- Cyrtomium falcatum* / Japanese Holly Fern
- Dryopteris erythrosora* / Japanese Shield Fern
- Polystichum acrostichoides* / Christmas fern

### VINES

- Clematis paniculata* / Sweet Autumn Clematis



*Fatsia japonica* / Japanese Fatsia



*Asarum splendens* / Chinese Ginger



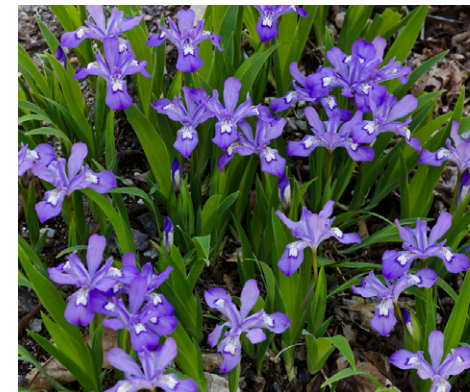
*Astilbe* 'Deutschland' / Astilbe



*Brunnera macrophylla* / Siberian Bugloss



*Helleborus niger* / Lenten Rose



*Iris cristata* / Dwarf Crested Iris



*Heuchera villosa* 'Autumn Bride' / Coral Bells



*Tiarella cordifolia* / Foamflower



*Cyrtomium falcatum* / Japanese Holly Fern



*Matteuccia struthiopteris* / Ostrich Fern



*Carex* 'Ice Dance' / Ice Dance Sedge



*Hakonechloa macra* / Hakone Grass



# LANDSCAPE PLANT SPECIFICATIONS

**BOTANICAL NAME / COMMON NAME**

**TREES & SHRUBS**

- Amelanchier canadensis* / Shadblow Serviceberry
- Cornus sanguinea* 'Midwinter Fire' / Bloodtwig Dogwood
- Hydrangea paniculata* 'Limelight' / Panicle Hydrangea
- Jasminum nudiflorum* / Winter Jasmine
- Microbiota decussata* / Russian Abor-vitae
- Rosa* 'Carefree Delight' / Shrub Rose
- Viburnum x burkwoodii* 'Conoy' / Viburnum

**PERENNIALS**

- Achillea millefolium* 'Terra Cotta' / Terra Cotta Common Yarrow
- Asclepias tuberosa* 'Gay Butterflies' / Butterfly Milkweed
- Caryopteris x clandonensis* 'Longwood Blue' / Bluebeard
- Coreopsis verticillata* 'Moonbeam' / Cutleaf Tickseed
- Echinacea purpera* 'Marmalade' / Coneflower
- Eryngium planum* 'Blue Glitter' / Blue Glitter Sea Holly
- Eupatorium dubium* 'Baby Joe' / Joe Pye Weed
- Gaura lindheimeri* 'Whirling Butterflies' / Gaura
- Liatris spicata* / Blazing Star
- Nepeta* 'Walker's Low' / Nepeta
- Perovskia atriplicifolia* / Russian Sage
- Phlox divaricata* / Wild Sweet William
- Rudbeckia fulgida* 'Goldsturm' / Black-Eyed Susan
- Salvia x sylvestris* 'May Night' / Meadow Sage
- Scabiosa columbaria* 'Butterfly Blue' / Butterfly Blue Scabiosa
- Solidago rugosa* 'Fireworks' / Goldenrod
- Stachys byzantina* / Lamb's Ears
- Symphotrichum ericoides* / White Heath Aster
- Verbena hastata* / Blue Vervain

**ORNAMENTAL GRASSES**

- Bouteloua gracilis* 'Blonde Ambition' / Blonde Ambition Blue Grama
- Calamagrostis brachytricha* / Korean Feather Reed Grass
- Muhlenbergia capillaris* / Pink Muhly Grass
- Nassella tenuissima* / Mexican Feather Grass

**BULBS**

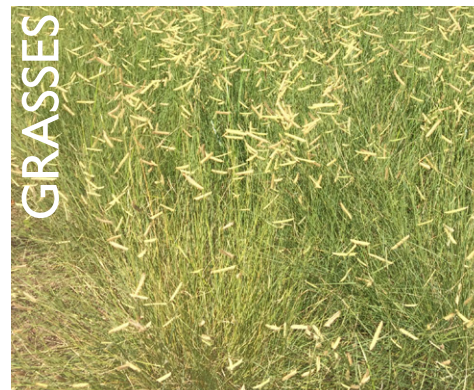
- Allium caeruleum* / Ornamental Onion
- Allium* 'Mount Everest' / Flowering Onion
- Allium sphaerocephalon* / Drumstick Allium

**SEDUM CARPET**

- Sedum acre* 'Aureum' / Golden Stonecrop
- Sedum album* 'Murale' / White Stonecrop
- Sedum album* 'Chlorotictum' / Stonecrop
- Sedum cauticola* 'Lidakense' / Stonecrop
- Sedum cauticola* / Stonecrop
- Sedum middendorffianum* var. *diffusum* / Stonecrop
- Sedum sexangulare* / Tasteless Stonecrop



*Echinacea purpera* 'Marmalade' / Coneflower



*Bouteloua gracilis* 'Blonde Ambition' / Blue Grama Grass



*Perovskia atriplicifolia* / Russian Sage



*Calamagrostis brachytricha* / Reed Grass



*Hydrangea paniculata* 'Limelight' / Panicle Hydrangea



*Achillea millefolium* 'Terra Cotta' / Terra Cotta Common Yarrow



*Rudbeckia x 'American Gold Rush'* / American Gold Rush Coneflower



*Nassella tenuissima* / Mexican Feather Grass



*Rhus aromatica* 'Gro-Low' / Aromatic Sumac



*Nepeta* 'Walker's Low' / Catmint



*Symphotrichum ericoides* / White Heath Aster



*Allium caeruleum* / Ornamental Onion

PERENNIALS

GRASSES

BULBS



**THIS PAGE INTENTIONALLY LEFT BLANK**

# LEED SCORECARD

## SUSTAINABILITY



LEED v4 BD+C for Core & Shell  
1200 K  
March 4, 2021



Y	M	N		Possible Points:	
1	0	0	<b>Integrated Process</b>	1	
1			Credit Integrated Process (v4.1)	1	

Y	M	N		Possible Points:	
17	0	3	<b>Location and Transportation</b>	20	

Y	M	N		Possible Points:	
		20	Credit 1 LEED for Neighborhood Development ND Path	20	
2			Credit 2 Sensitive Land Protection	2	
		3	Credit 3 High Priority Site	3	
6			Credit 4 Surrounding Density and Diverse Uses	6	
6			Credit 5 Access to Quality Transit	6	
1			Credit 6 Bicycle Facilities	1	
1			Credit 7 Reduced Parking Footprint (v4.1)	1	
1			Credit 8 Green Vehicles (v4.1)	1	

Y	M	N		Possible Points:	
5	2	4	<b>Sustainable Sites</b>	11	

Y	M	N		Possible Points:	
Y			Prereq Construction Activity Pollution Prevention	Req	
1			Credit 1 Site Assessment	1	
	1	1	Credit 2 Site Development - Protect or Restore Habitat	2	
1			Credit 3 Open Space	1	
		3	Credit 4 Rainwater Management	3	
1	1		Credit 5 Heat Island Reduction	2	
1			Credit 6 Light Pollution Reduction	1	
1			Credit 7 Tenant Design and Construction Guidelines	1	

Y	M	N		Possible Points:	
1	3	7	<b>Water Efficiency</b>	11	

Y	M	N		Possible Points:	
Y			Prereq 1 Outdoor Water Use Reduction	Req	
Y			Prereq 2 Indoor Water Use Reduction	Req	
Y			Prereq 3 Building-Level Water Metering	Req	
1	1	1	Credit 1 Outdoor Water Use Reduction (v4.1)	3	
	2	2	Credit 2 Indoor Water Use Reduction (v4.1)	4	
		3	Credit 3 Optimize Process Water Use (v4.1)	3	
		1	Credit 4 Water Metering	1	

Y	M	N		Possible Points:	
11	6	16	<b>Energy and Atmosphere</b>	33	

Y	M	N		Possible Points:	
Y			Prereq 1 Fundamental Commissioning and Verification	Req	
Y			Prereq 2 Minimum Energy Performance	Req	
Y			Prereq 3 Building-Level Energy Metering	Req	
Y			Prereq 4 Fundamental Refrigerant Management	Req	
3		3	Credit 1 Enhanced Commissioning	6	
5	5	8	Credit 2 Optimize Energy Performance	18	
		1	Credit 3 Advanced Energy Metering	1	
		2	Credit 4 Grid Harmonization	2	
2	1	2	Credit 5 Renewable Energy (v4.1)	5	
1			Credit 6 Enhanced Refrigerant Management	1	

Y	M	N		Possible Points:	
9	0	5	<b>Materials and Resources</b>	14	

Y	M	N		Possible Points:	
Y			Prereq 1 Storage and Collection of Recyclables	Req	
Y			Prereq 2 Construction and Demolition Waste Management Planning	Req	
5		1	Credit 1 Building Life-Cycle Impact Reduction	6	
1		1	Credit 2 Product Disclosure and Optimization - EPDs	2	
		2	Credit 3 Product Disclosure and Optimization - Sourcing of Raw Materials	2	
1		1	Credit 4 Product Disclosure and Optimization - Material Ingredients	2	
2			Credit 5 Construction and Demolition Waste Management	2	

Y	M	N		Possible Points:	
6	0	4	<b>Indoor Environmental Quality</b>	10	

Y	M	N		Possible Points:	
Y			Prereq Minimum Indoor Air Quality Performance	Req	
Y			Prereq Environmental Tobacco Smoke Control	Req	
1		1	Credit 1 Enhanced Indoor Air Quality Strategies	2	
3			Credit 2 Low-Emitting Materials	3	
1			Credit 3 Construction Indoor Air Quality Management Plan	1	
		3	Credit 4 Daylight	3	
1			Credit 5 Quality Views	1	

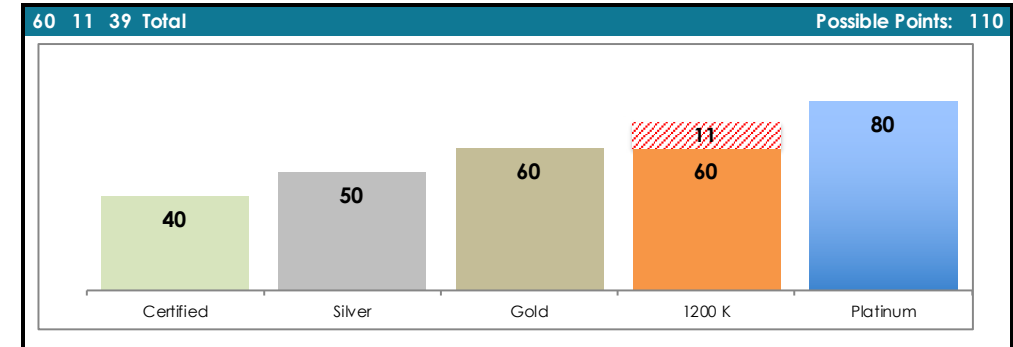
Y	M	N		Possible Points:	
6	0	0	<b>Innovation</b>	6	

Y	M	N		Possible Points:	
5			Credit 1 Innovation	5	
1			Credit 2 LEED Accredited Professional	1	

Y	M	N		Possible Points:	
4	0	0	<b>Regional Priority Credits</b>	4	

Y	M	N		Possible Points:	
1			Credit 1.1 Regional Priority: Surrounding Density and Diverse Uses	1	
1			Credit 1.2 Regional Priority: Access to Quality Transit	1	
1			Credit 1.3 Regional Priority: Green Vehicles	1	
1			Credit 1.4 Regional Priority: Open Space	1	

Y	M	N		Possible Points:	
60	11	39	<b>Total</b>	110	



**THIS PAGE INTENTIONALLY LEFT BLANK**

