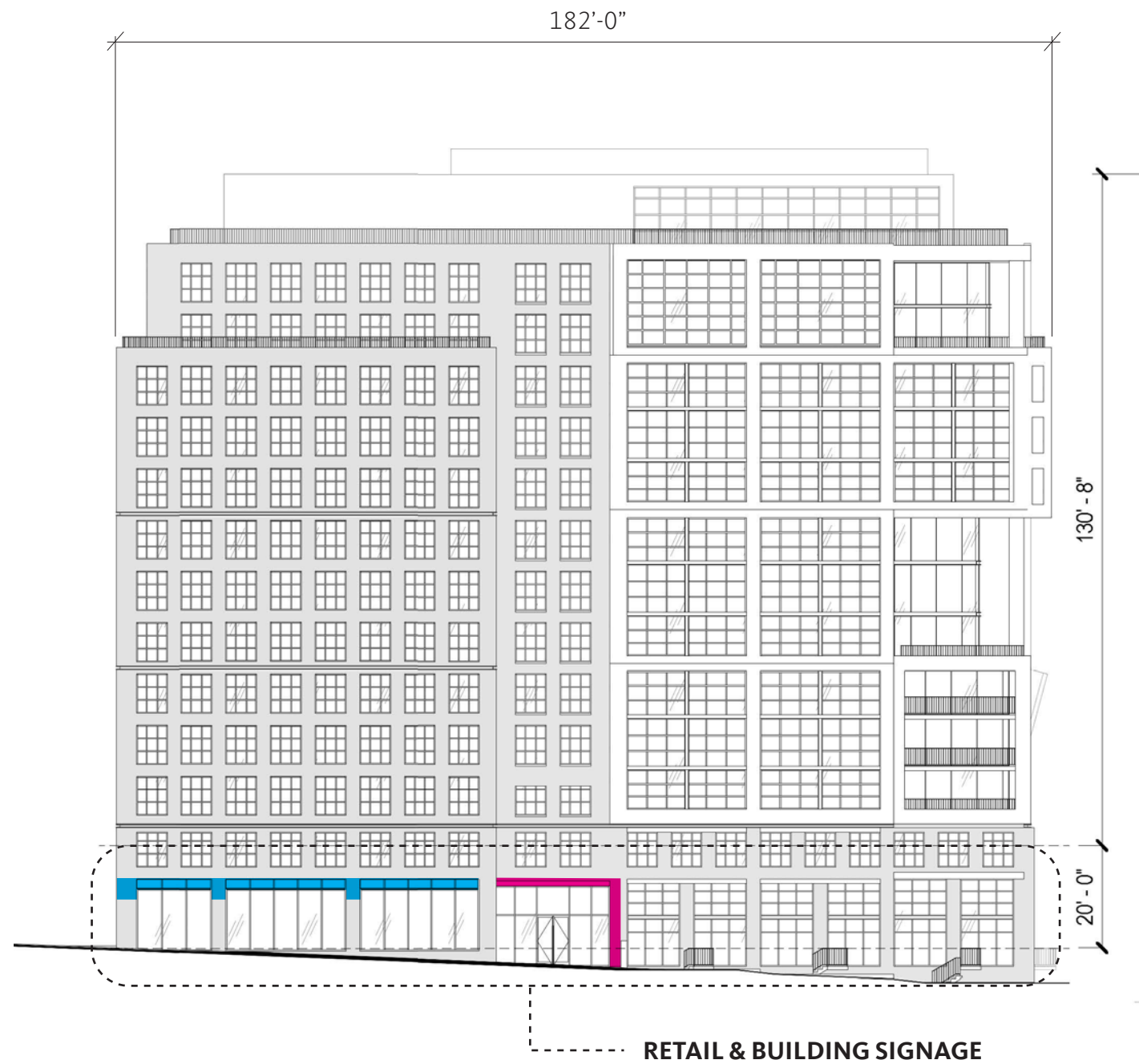
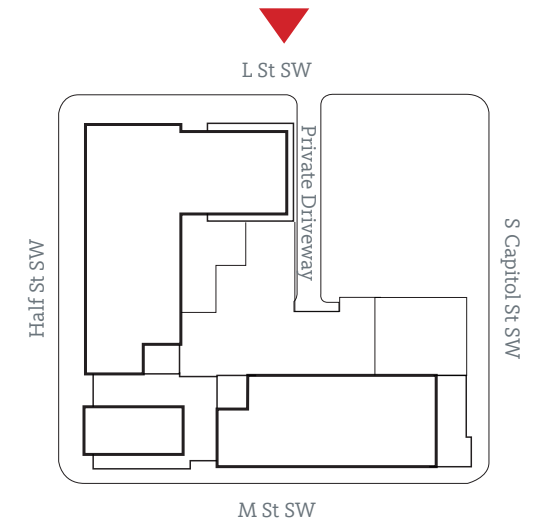


SECTION 9

SIGNAGE



1 ELEVATION: NORTH
SCALE: 1"=30'-0"



SIGN TYPES

RETAIL SIGNAGE

BUILDING SIGNAGE

TENANT SIGNAGE

CODE ALLOWANCE

SIGNS ABOVE FIRST STORY

(LINEAR FEET x HEIGHT ABOVE 20'-0")

$182 \times 130.67 = 23,781.94 \text{ SF}$

$27,694.94 \text{ SF} \times 1/40 = \mathbf{594.54 \text{ MAX SF}}$

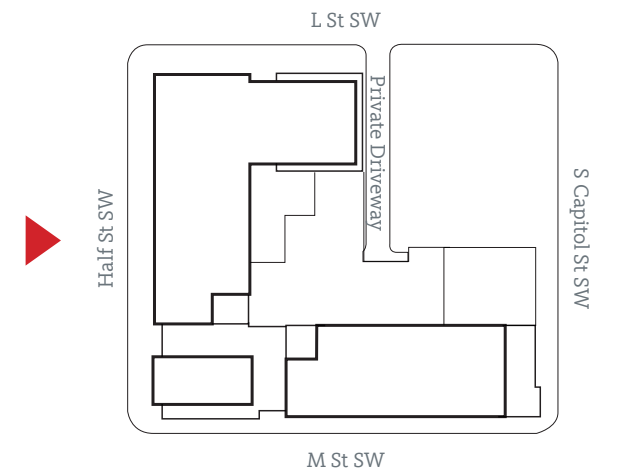
FIRST STORY SIGNS

(LINEAR FEET x 2)

$182 \times 2 = \mathbf{364 \text{ MAX SF}}$



1 ELEVATION: WEST
SCALE: 1"=30'-0"



SIGN TYPES

- RETAIL SIGNAGE
- BUILDING SIGNAGE
- TENANT SIGNAGE

CODE ALLOWANCE – ONE ADDRESS

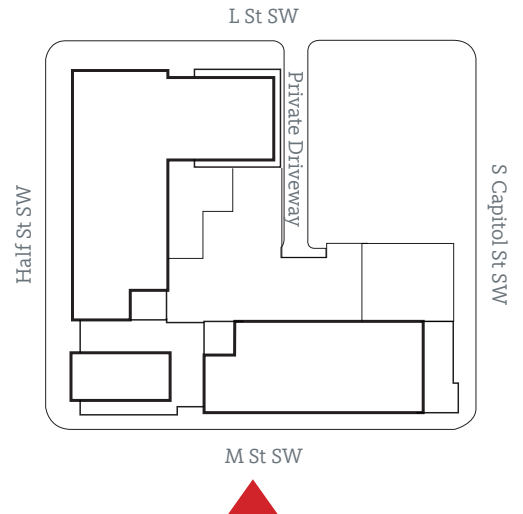
SIGNS ABOVE FIRST STORY
(LINEAR FEET x HEIGHT ABOVE 20'-0")
293.83 x 135 = 39,667.05 SF
39,667.05 SF x 1/40 = **991.67 MAX SF**

FIRST STORY SIGNS
(LINEAR FEET x 2)
293.83 x 2 = **587.66 MAX SF**

CODE ALLOWANCE – ADDRESS B ONLY

SIGNS ABOVE FIRST STORY
(LINEAR FEET x HEIGHT ABOVE 20'-0")
130.5 x 135 = 17,617.5 SF
17,617.5 SF x 1/40 = **440.43 MAX SF**

FIRST STORY SIGNS
(LINEAR FEET x 2)
130.5 x 2 = **261 MAX SF**



SIGN TYPES

- RETAIL SIGNAGE
- BUILDING SIGNAGE
- TENANT SIGNAGE

CODE ALLOWANCE

SIGNS ABOVE FIRST STORY
 (LINEAR FEET x HEIGHT ABOVE 20'-0")
 $326.75 \times 122.17 = 39,919.04 \text{ SF}$
 $39,919.04 \text{ SF} \times 1/40 = \mathbf{997.97 \text{ MAX SF}}$

FIRST STORY SIGNS
 (LINEAR FEET x 2)
 $326.75 \times 2 = \mathbf{653.5 \text{ MAX SF}}$

1 ELEVATION: SOUTH
 SCALE: 1"=30'-0"



SIGN TYPES

RETAIL SIGNAGE

BUILDING SIGNAGE

TENANT SIGNAGE

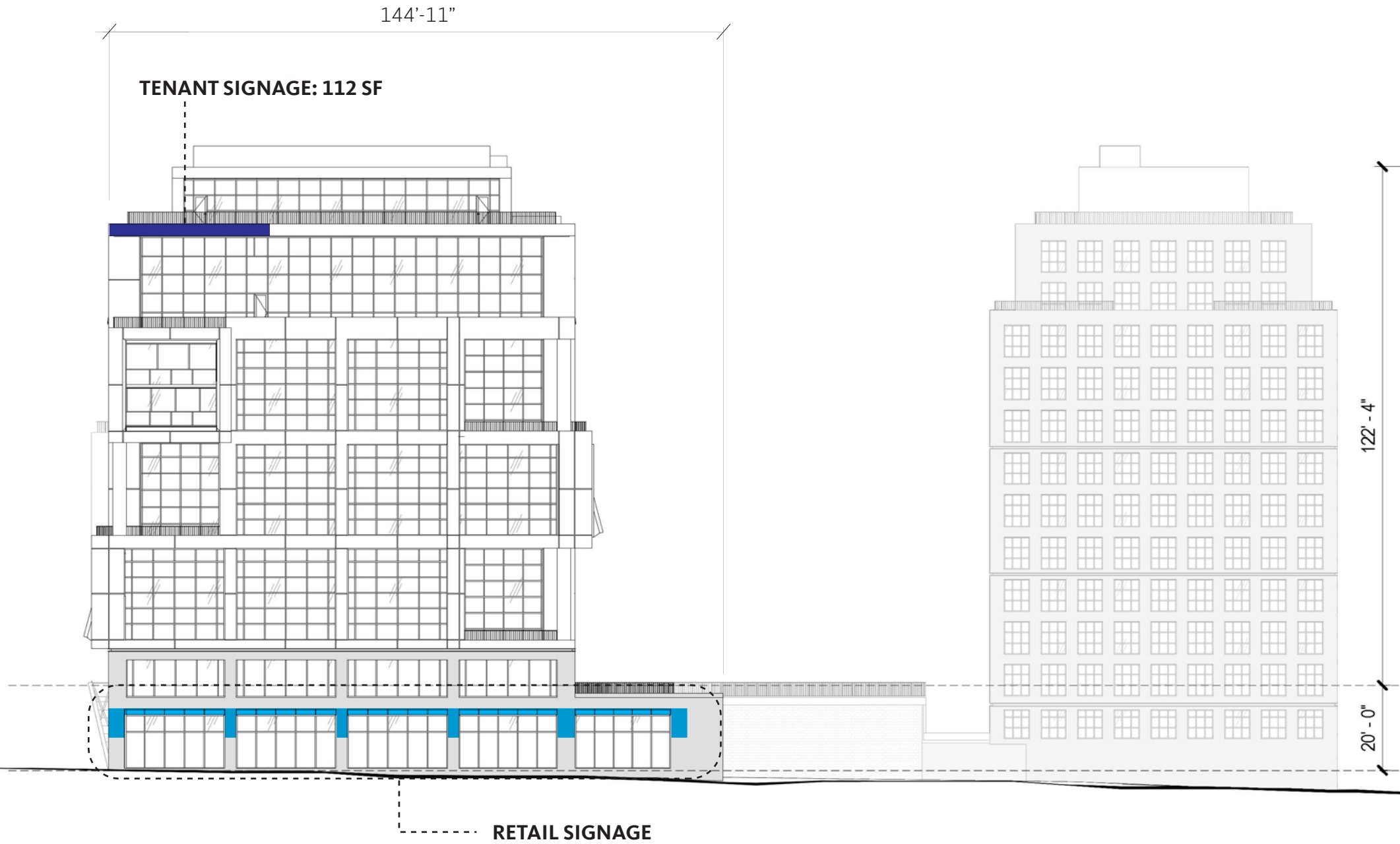
CODE ALLOWANCE

SIGNS ABOVE FIRST STORY

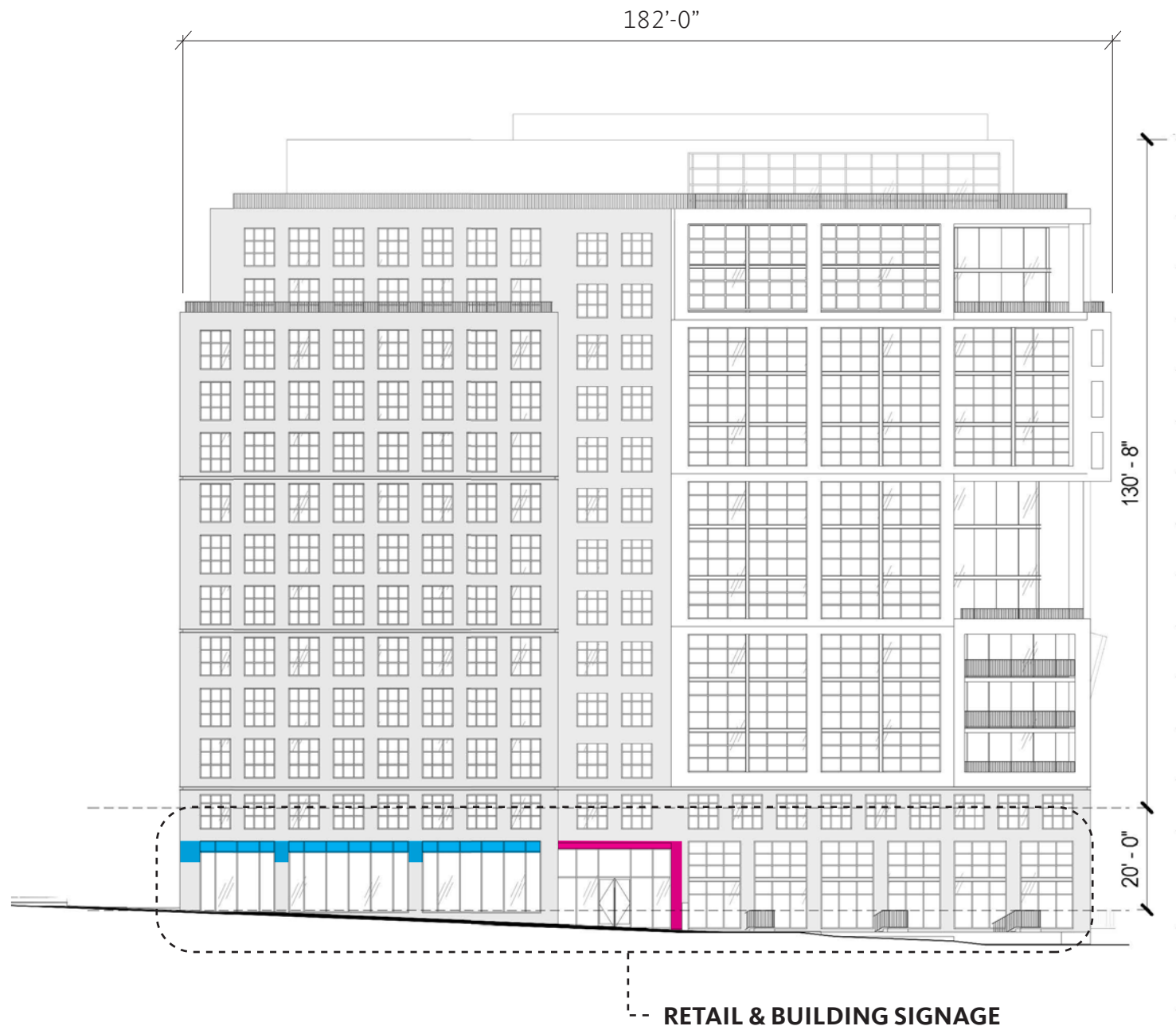
(LINEAR FEET x HEIGHT ABOVE 20'-0")
 $144.92 \times 122.33 = 17,728.06 \text{ SF}$
 $17,728.06 \text{ SF} \times 1/40 = \mathbf{443.20 \text{ MAX SF}}$

FIRST STORY SIGNS

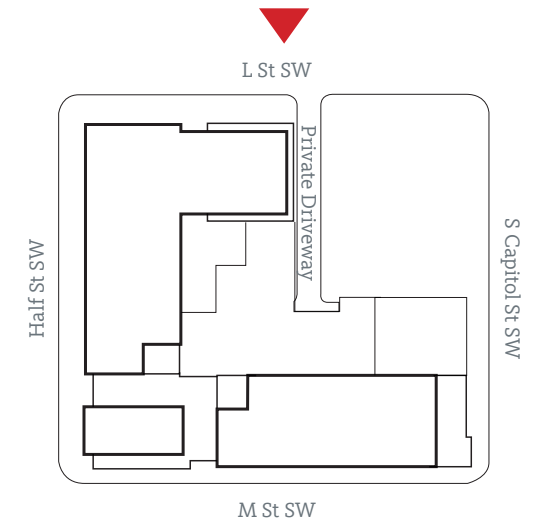
(LINEAR FEET x 2)
 $144.92 \times 2 = \mathbf{289.84 \text{ MAX SF}}$



1 ELEVATION: EAST
 SCALE: 1"=30'-0"



1 ELEVATION: NORTH
SCALE: 1"=30'-0"



SIGN TYPES

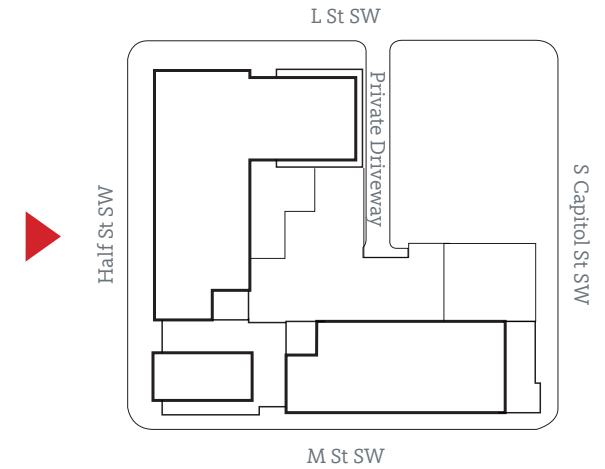
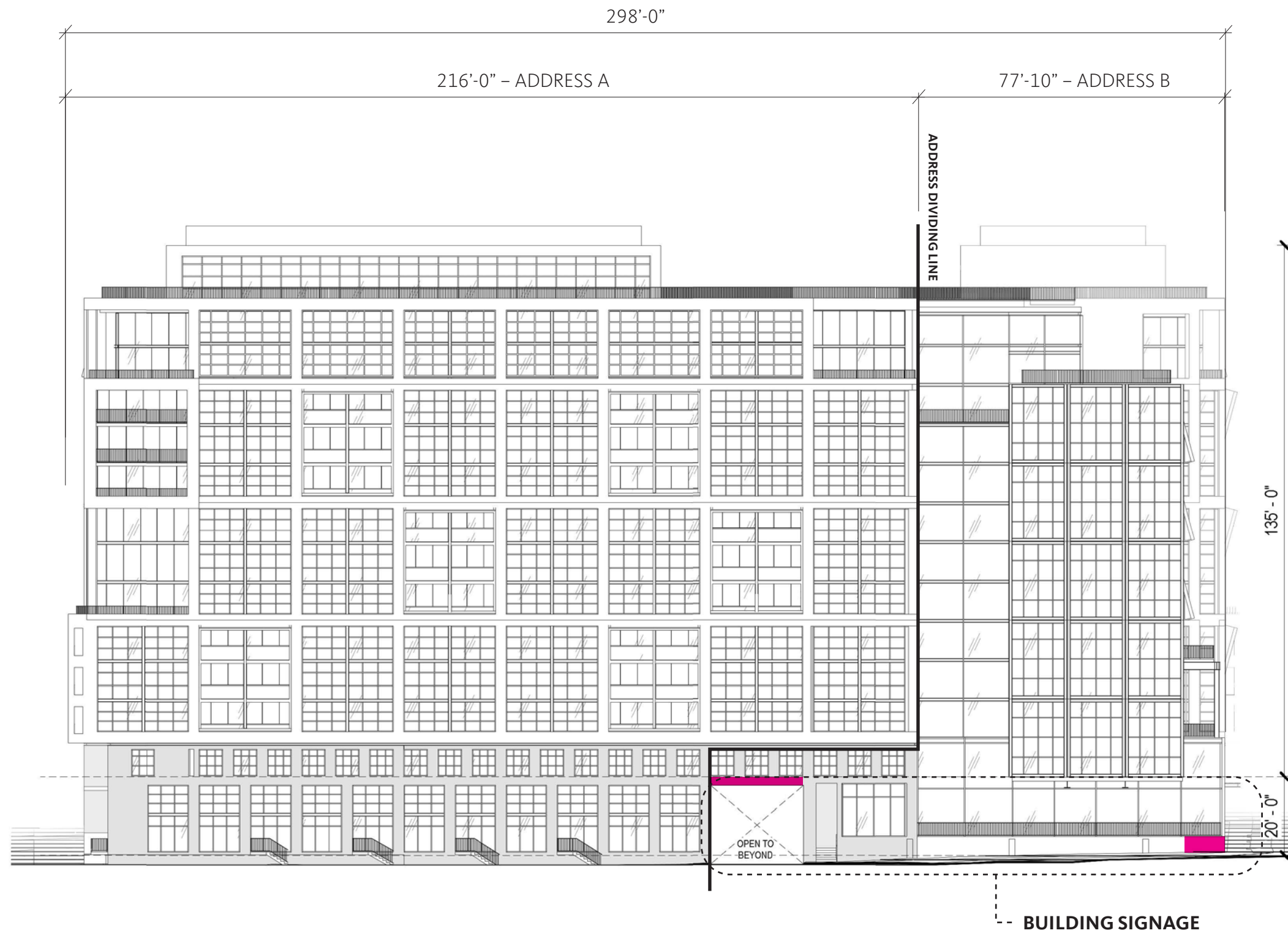
RETAIL SIGNAGE

BUILDING SIGNAGE

CODE ALLOWANCE

SIGNS ABOVE FIRST STORY
(LINEAR FEET x HEIGHT ABOVE 20'-0")
182 x 130.67 = 23,781.94 SF
23,781.94 SF x 1/40 = **594.54 MAX SF**

FIRST STORY SIGNS
(LINEAR FEET x 2)
182 x 2 = **364 MAX SF**



SIGN TYPES

RETAIL SIGNAGE

BUILDING SIGNAGE

CODE ALLOWANCE - ONE ADDRESS

SIGNS ABOVE FIRST STORY
 (LINEAR FEET x HEIGHT ABOVE 20'-0")
 $298 \times 135 = 40,230 \text{ SF}$
 $40,230 \text{ SF} \times 1/40 = \mathbf{1,005.75 \text{ MAX SF}}$

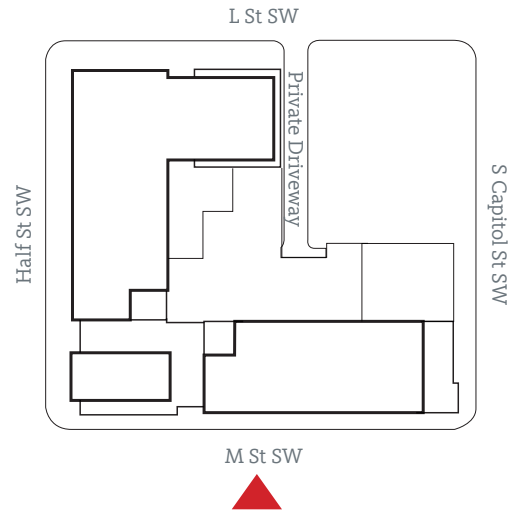
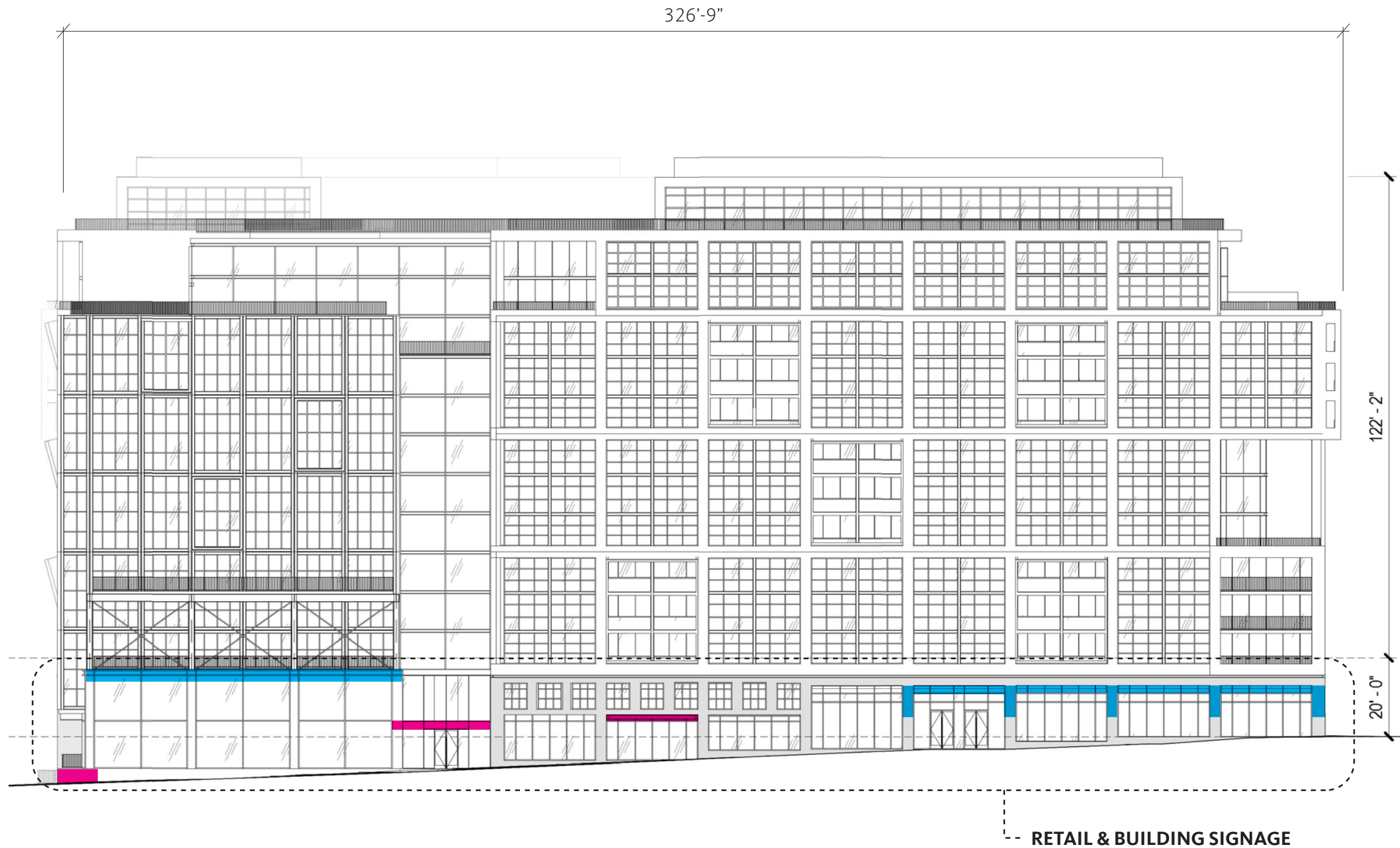
FIRST STORY SIGNS
 (LINEAR FEET x 2)
 $298 \times 2 = \mathbf{596 \text{ MAX SF}}$

CODE ALLOWANCE - ADDRESS B ONLY

SIGNS ABOVE FIRST STORY
 (LINEAR FEET x HEIGHT ABOVE 20'-0")
 $77.83 \times 135 = 10,507.05 \text{ SF}$
 $10,507.05 \text{ SF} \times 1/40 = \mathbf{262.67 \text{ MAX SF}}$

FIRST STORY SIGNS
 (LINEAR FEET x 2)
 $77.83 \times 2 = \mathbf{155.66 \text{ MAX SF}}$

1 ELEVATION: WEST
 SCALE: 1"=30'-0"



SIGN TYPES

RETAIL SIGNAGE

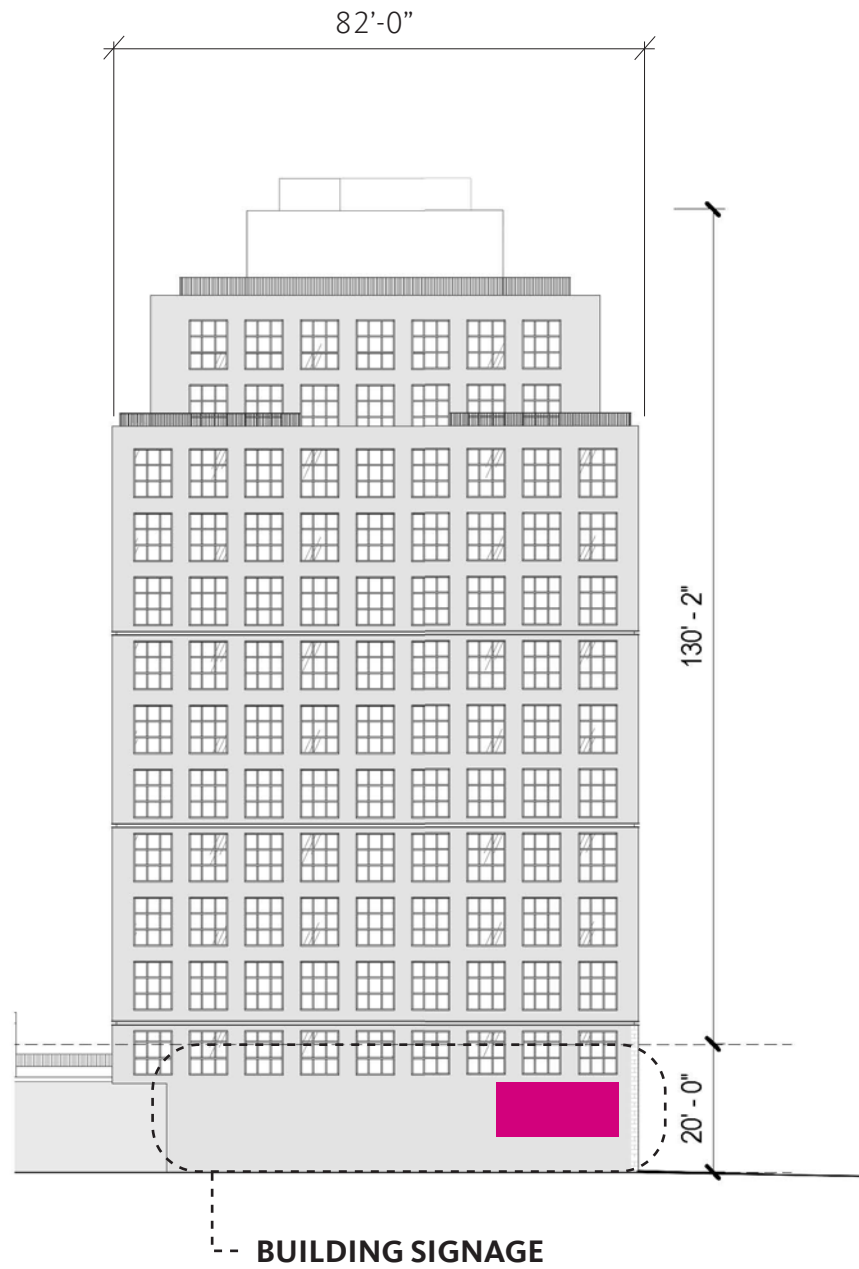
BUILDING SIGNAGE

CODE ALLOWANCE

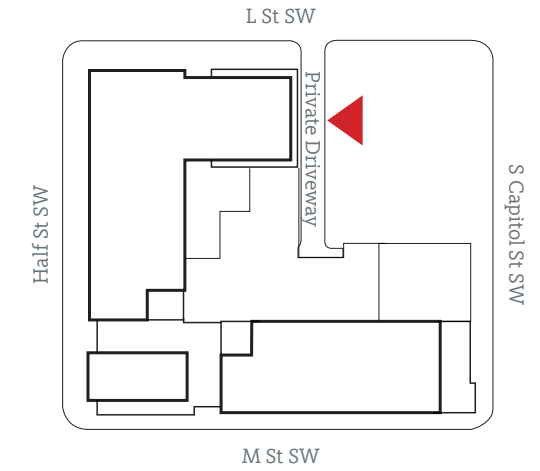
SIGNS ABOVE FIRST STORY
 (LINEAR FEET x HEIGHT ABOVE 20'-0")
 $326.75 \times 122.17 = 39,919.04$ SF
 $39,919.04$ SF x 1/40 = **997.97 MAX SF**

FIRST STORY SIGNS
 (LINEAR FEET x 2)
 $326.75 \times 2 =$ **653.5 MAX SF**

1 ELEVATION: SOUTH
 SCALE: 1"=30'-0"



1 ELEVATION: EAST A
SCALE: 1"=30'-0"



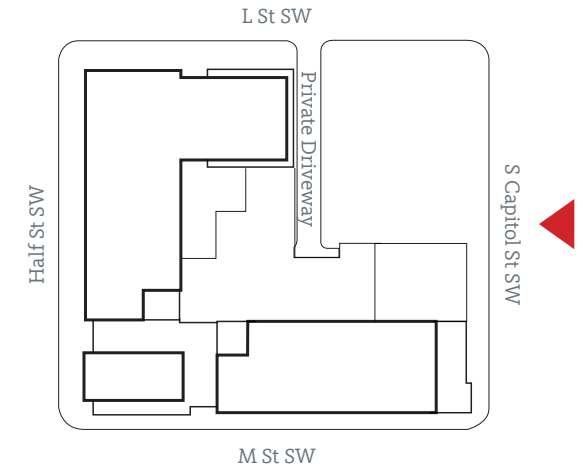
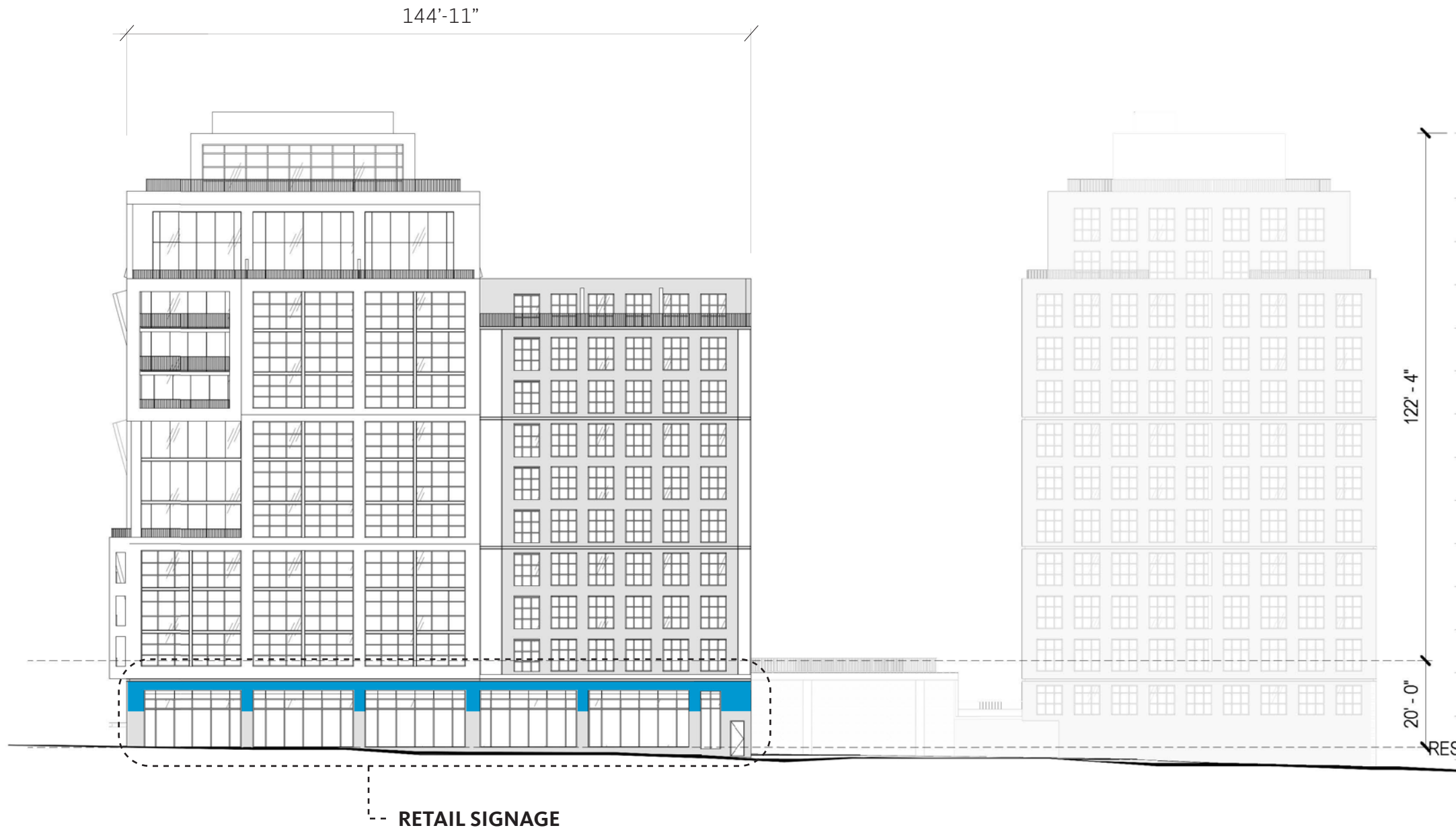
SIGN TYPES

- RETAIL SIGNAGE
- BUILDING SIGNAGE

CODE ALLOWANCE

SIGNS ABOVE FIRST STORY
 (LINEAR FEET x HEIGHT ABOVE 20'-0")
 $82 \times 130.17 = 10,673.94 \text{ SF}$
 $10,673.94 \text{ SF} \times 1/40 = \mathbf{266.84 \text{ MAX SF}}$

FIRST STORY SIGNS
 (LINEAR FEET x 2)
 $82 \times 2 = \mathbf{164 \text{ MAX SF}}$



SIGN TYPES

RETAIL SIGNAGE

BUILDING SIGNAGE

CODE ALLOWANCE

SIGNS ABOVE FIRST STORY

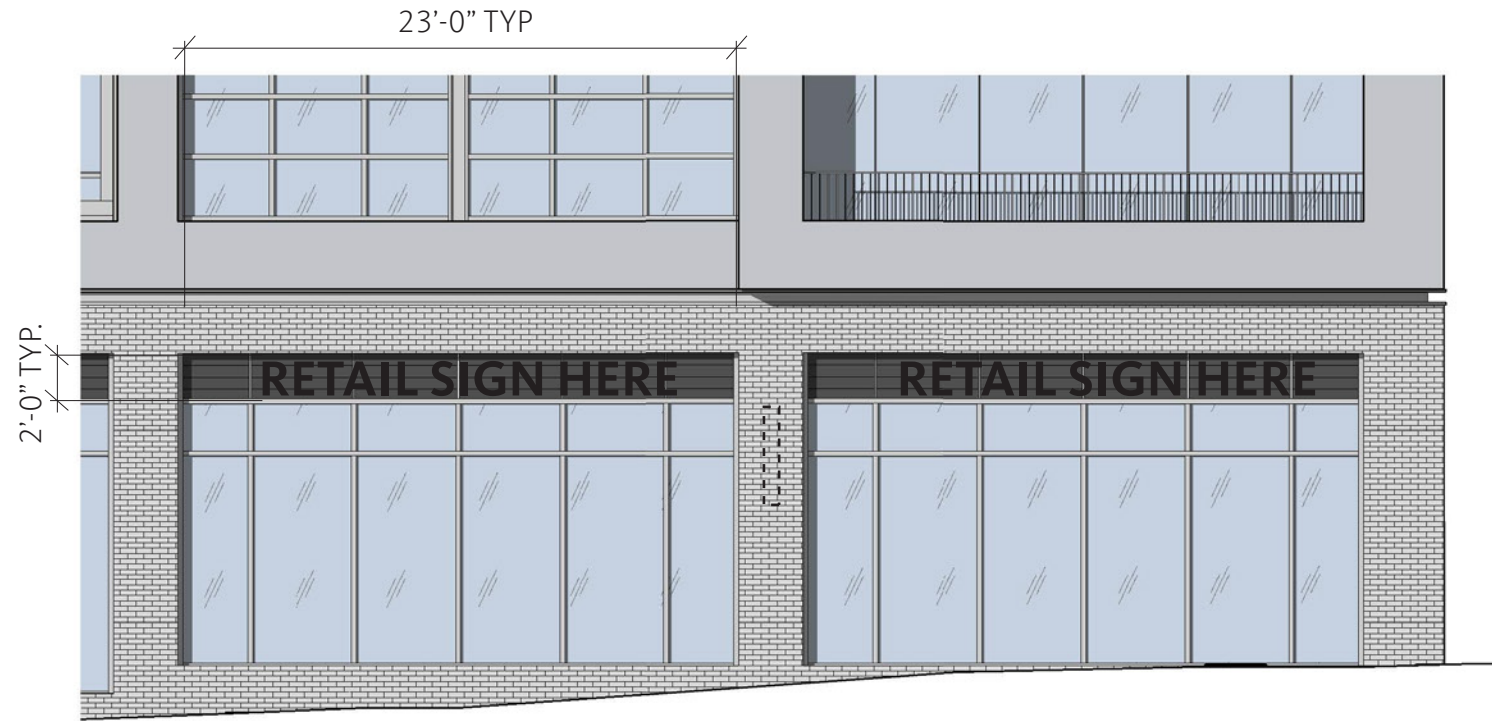
(LINEAR FEET x HEIGHT ABOVE 20'-0")
 $144.92 \times 122.33 = 17,728.06 \text{ SF}$
 $17,728.06 \text{ SF} \times 1/40 = \mathbf{443.20 \text{ MAX SF}}$

FIRST STORY SIGNS

(LINEAR FEET x 2)
 $144.92 \times 2 = \mathbf{289.84 \text{ MAX SF}}$

1 ELEVATION: EAST B
 SCALE: 1"=30'-0"

Typical Storefront Plan & Detail Elevation



2 TYPICAL STOREFRONT DETAIL
SCALE: 1/2"=1'-0"

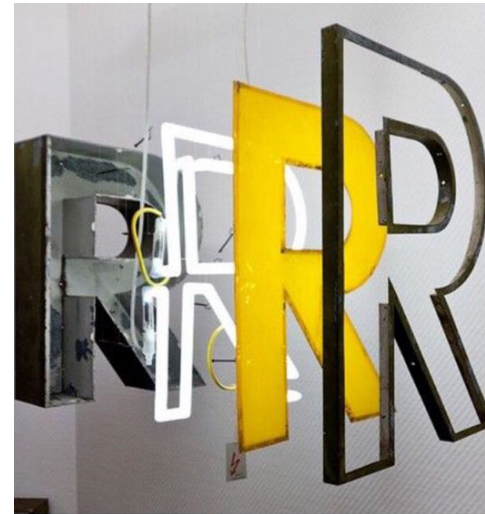


BLADE SIGN

SIGNAGE BAND SUBJECT TO CHANGE AND TO ACCOMMODATE LOUVERS AS NEEDED, TYP.

NOTE: EXTERIOR SIGNAGE IS PRELIMINARY. FONT, MESSAGE AND COLOR SUBJECT TO CHANGE PROVIDED THAT MAX. OVERALL DIMENSION TO REMAIN.

1 TYPICAL STOREFRONT DETAIL
SCALE: 1/2"=1'-0"



Building Identification

Building identification signage could be placed on or adjacent to architectural structures but should be highly visible to vehicles and pedestrians. Signage may be internally or halo illuminated and could be placed inside or outside of the building shell.

Parking Identification

Parking identification signage should be clearly visible against the background it sits on and use complementary materials to the surrounding architecture. Letterforms and arrows may be illuminated or have light shining on them for night time visibility.



Painted or Dimensional Signs

Signage could be placed on, above or below canopies and other architectural structures but must feel complementary and fully integrated. Signage may consist of flat or dimensional lettering and could be internally or halo illuminated.

Blade Signs

Blade signs shall be directly mounted to the building and materiality must feel complementary to surrounding architecture. Lettering on these signs could be dimensional or flat and sign may be internally illuminated.



Tenant Signage

Internally illuminated and/or halo sign attached directly to the building facade.