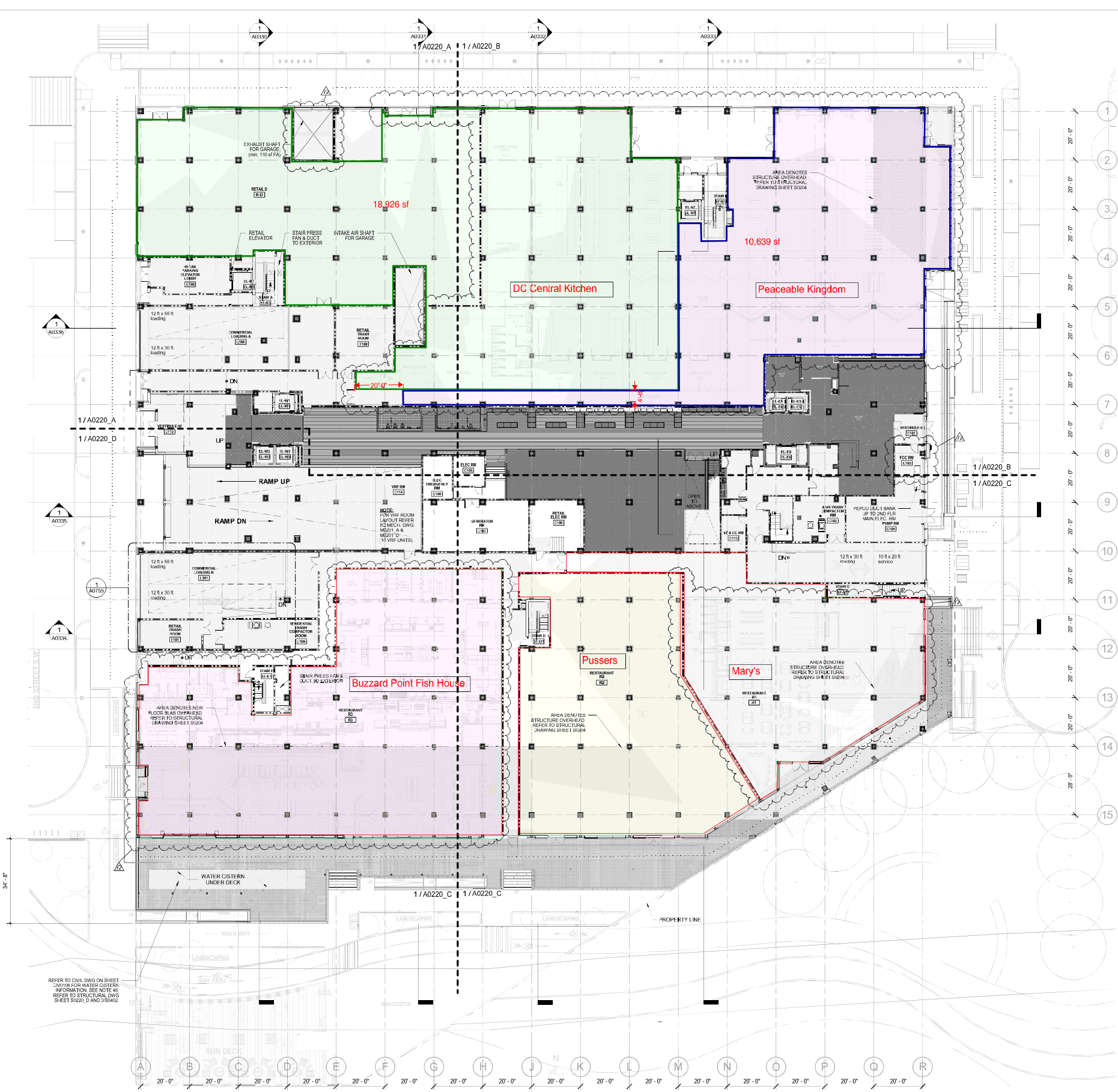


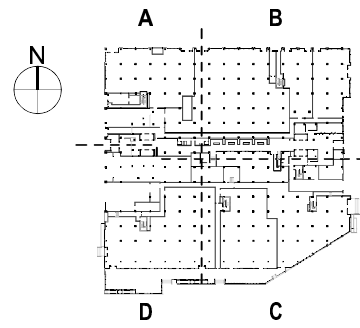
C:\Users\mab\Documents\21021001 SW\_ARCH\_CD07.mxd  
 6/2/2019 1:00:00 PM



**GENERAL NOTES - GROUND FLOOR**

1. REFER TO SHEET A0220 SERIES FOR ELEVATOR PLANS AND SECTIONS.
  2. LOADING DOCK VERTICAL CLEARANCE SHALL BE 12'-6" MIN.
  3. FOR FLOODPLAIN RELATED DRAWINGS, REFER TO SHEET 0220.
  4. REFER TO SHEET A1010 FOR EXTERIOR WALL TYPE SCHEDULE.
  5. EXTERIOR WALL DIMENSIONS ARE ON ROUGH OPENINGS.
  6. VEHICULAR RAMPS, GARAGE AND LOADING DOCKS TO RECEIVE TRAFFIC COATING AS PER SPECIFICATION.
- INTERIOR DESIGN SCOPE (REFER TO N-SERIES DRAWINGS)

**KEY PLAN**

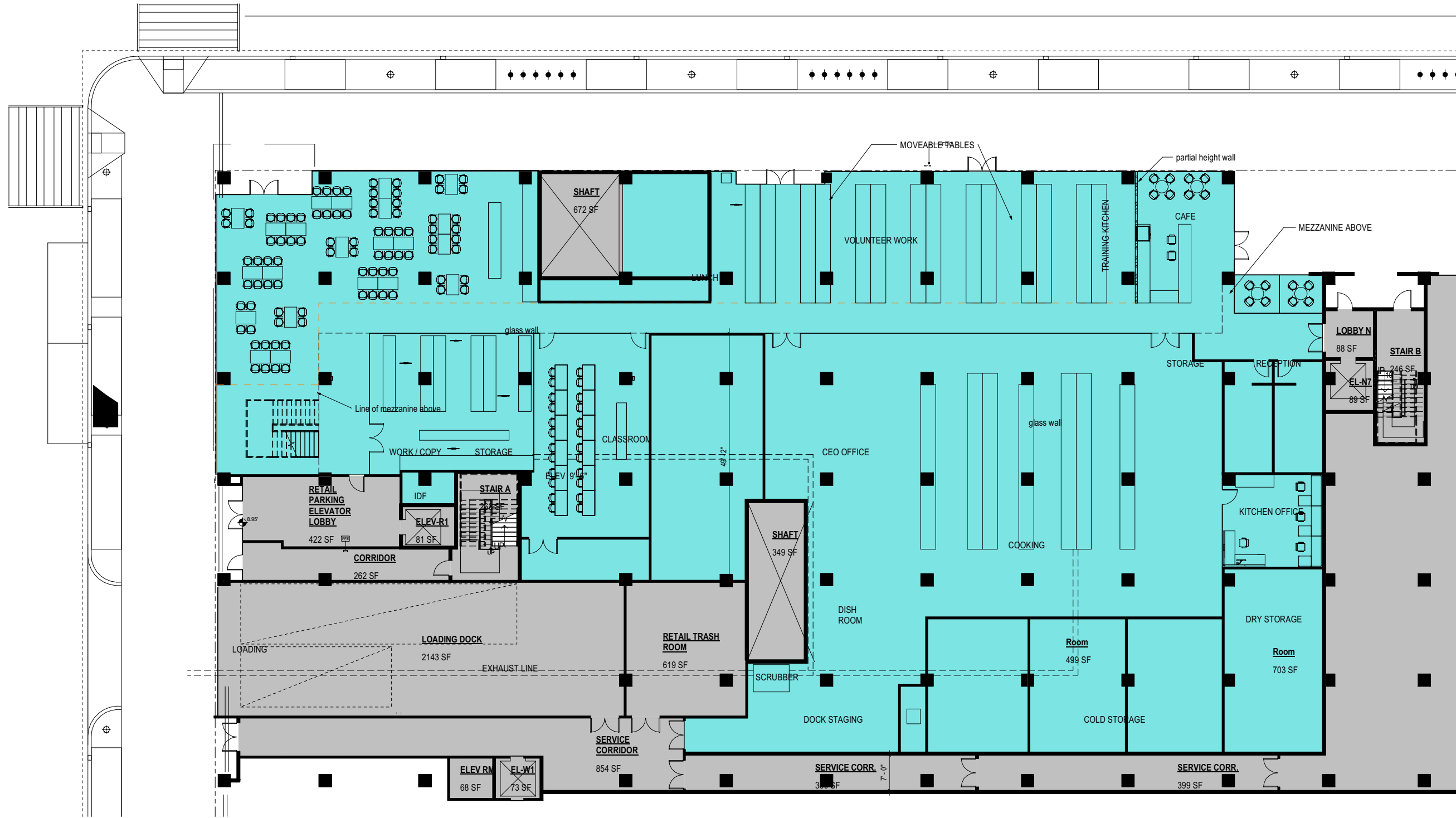


1 LEVEL 01 - GROUND FLOOR PLAN  
 2.00 1/16" = 1'-0"

**DOB APPROVAL STAMPS**

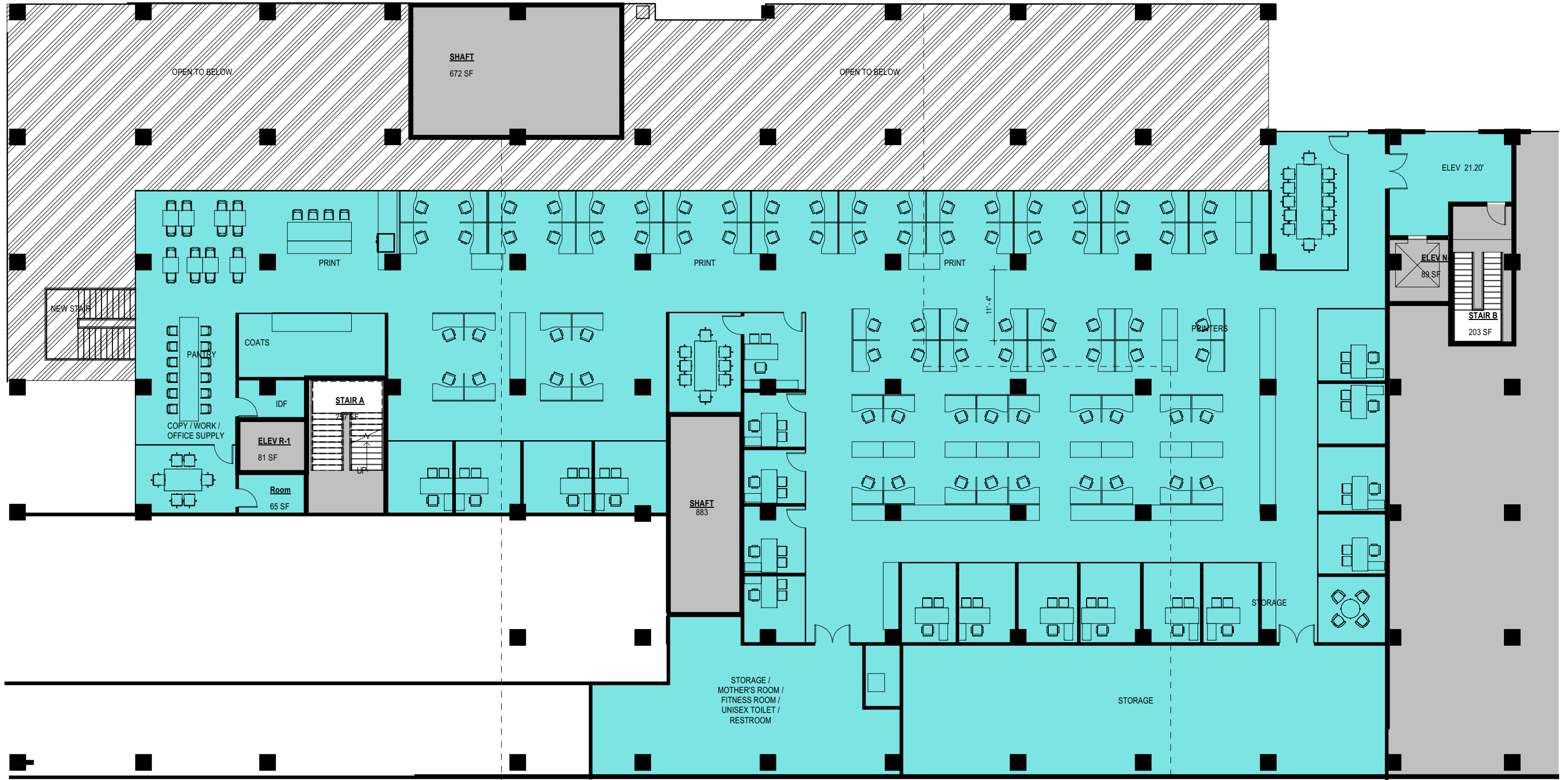
No.	Date	Description
72	10/24/19	IASI 028 - Permit Revisions
19	10/13/19	IASI 004 - Star C Revision
10	12/14/18	IFC
10	12/14/18	Permit Revisions
5	10/16/18	Final GMP & Coordination Set
1	10/16/18	GMP Addendum 01
	10/16/18	GMP Set
	12/18/17	Permit Set
	05/25/17	100% Design Development
Submissions & Revisions		
Owner		
River Point Partners, LLC 801 13th Street, NW Suite 300 North Washington, DC 20005 Phone: 202.538.3300		
Architect		
ANTUNOVICH ASSOCIATES 1144 3rd Street, NE Washington, DC 20002 Main: (202) 540-1144 www.antunovich.com		
Structural Engineer		
Tadger-Cohen-Edelson Associates, Inc. 1100 Spring Street Suite 310 Silver Spring, MD 20910 Phone: 301.597.1620		
M.E.P. & F.P. Engineers		
Metropolitan Engineering 1225 19th Street, NW Suite 800 Washington, DC 20036 Phone: 202.296.2580		
Civil Engineer		
Wiles-Mensch Coporation - DC 510 8th Street, SE Washington, DC 20003 Phone: 202.552.0250		
Landscape Architect		
West 8 333 Hudson Street Suite 405 New York, New York 10013 Phone: 212.265.0088		
General Contractor		
CBG Building Company 12200 Tech Road, Suite 300 Silver Spring, MD 20904 Phone: 301.580-3200		
Project Location		
2121 1st St, SW Washington, DC		
Drawing Title		
GROUND FLOOR PLAN		
Seal		
Date: 06/24/19		
Drawn By:		
Checked By:		
Project No:		
Drawing No.		
A0200		

**A0200** ENGINEERING COMMISSION  
 District of Columbia  
 CASE NO. 17-05C  
 EXHIBIT NO. 2H



1  
A04 LEVEL 1 - AREA PLAN  
3/32" = 1'-0"

FIRST FLOOR AREA - 19,442  
 SECOND FLOOR AREA - 14,968  
 TOTAL = 34,410sf



1 LEVEL 2 - AREA PLAN  
 A05 1/8" = 1'-0"

MEZZANINE FLOOR AREA - 14,968 SF

# RIVER POINT

---



# RIVER POINT

