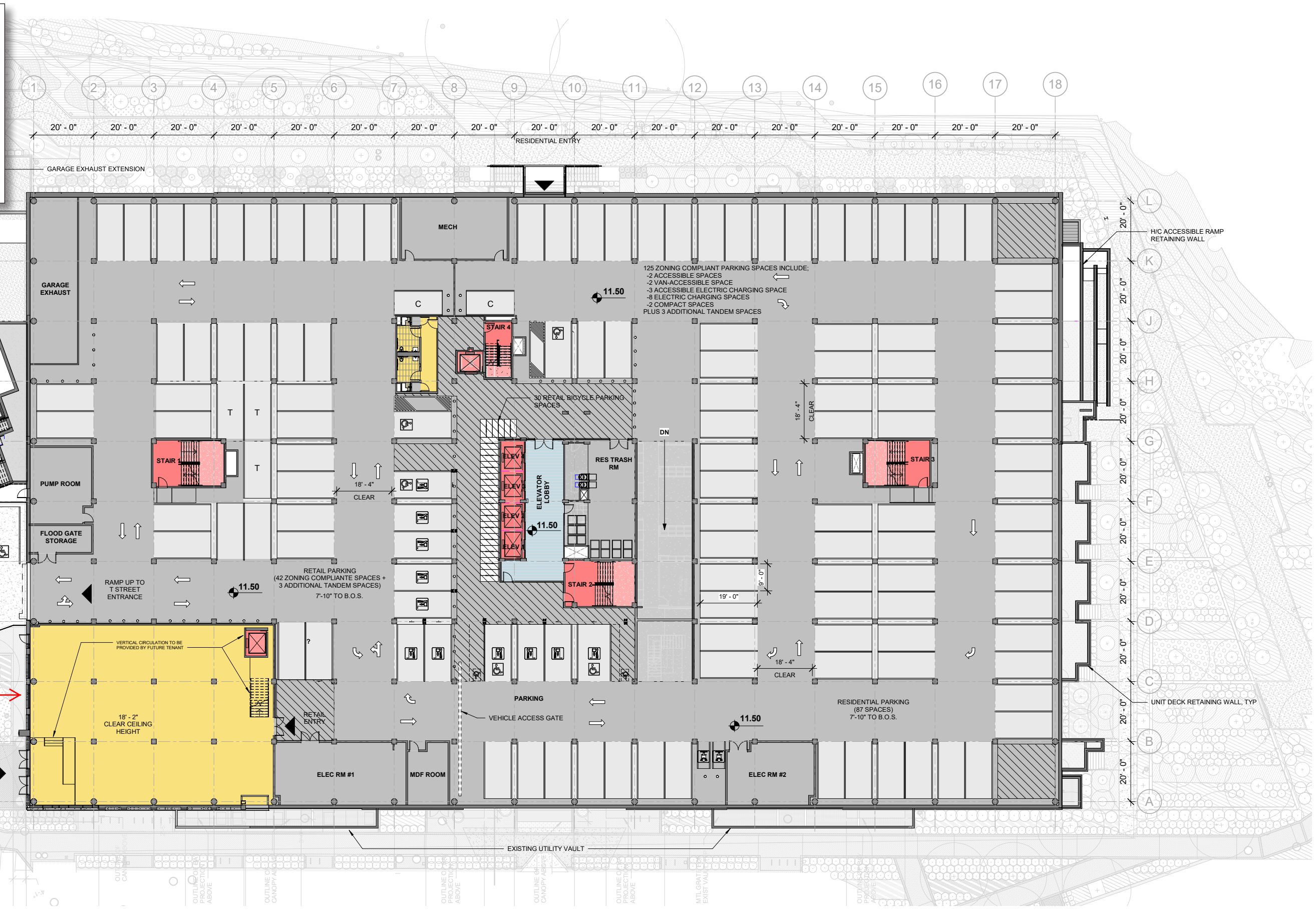


RETAIL
 RESIDENTIAL:
COMMON
 CIRCULATION
 PARKING

P1 retail space proposed for educational use



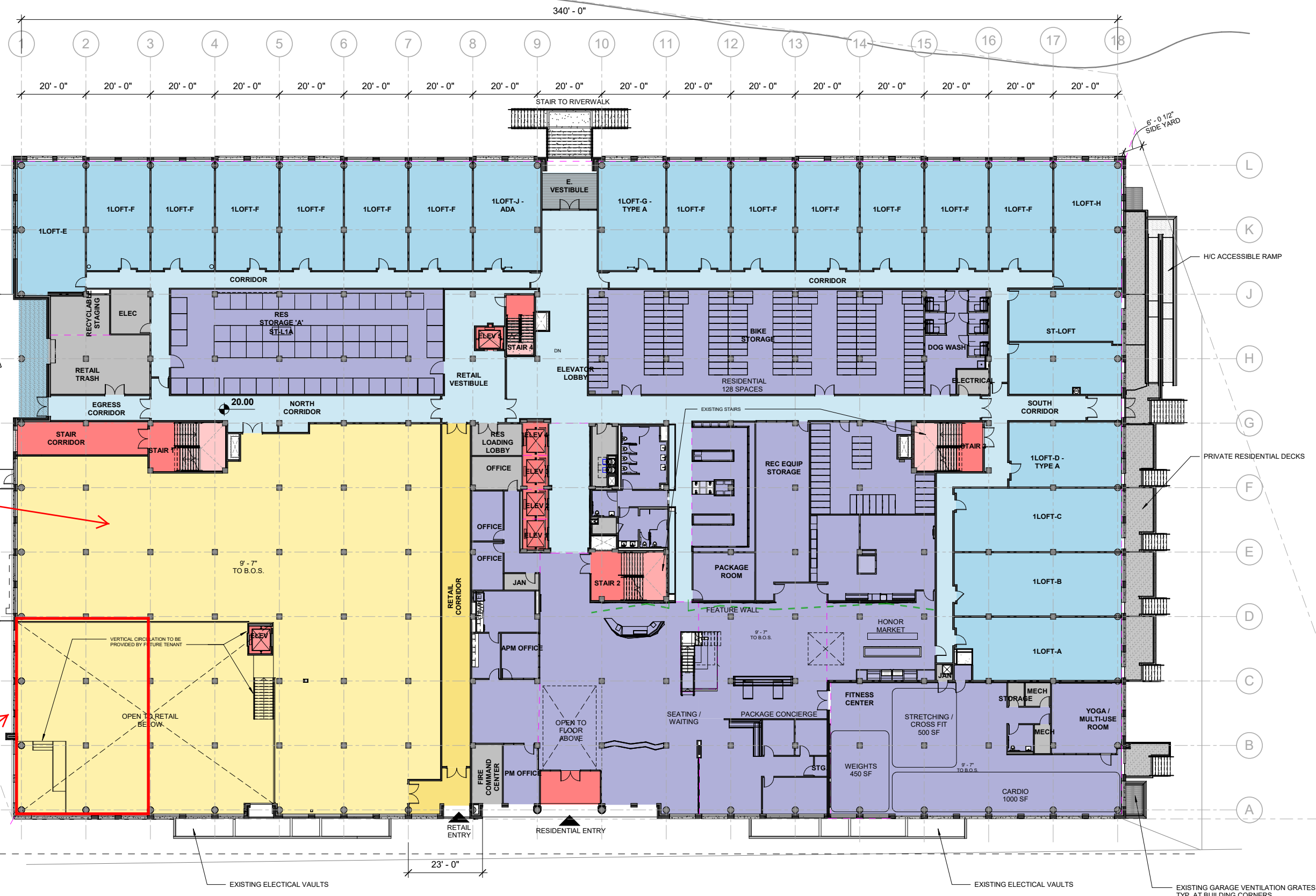
1900 HALF STREET

Square 666 Lot 15 / 1900 Half Street SW, Washington, DC · Douglas Development Corporation · Antunovich Associates © · Dewberry Consultants LLC · Lee and Associates Inc.

PROPOSED P1 Floor Plan

August 06, 2018

- RESIDENTIAL: UNITS
- RESIDENTIAL: COMMON
- CIRCULATION
- AMENITY
- SERVICE
- RETAIL BELOW
EXISTING LOADING PLATFORM TO REMAIN



Ground floor retail space proposed for educational use

Additional 2,400 square feet added to double-height retail space, proposed for educational use

1900 HALF STREET

Square 666 Lot 15 / 1900 Half Street SW, Washington, DC · Douglas Development Corporation · Antunovich Associates © · Dewberry Consultants LLC · Lee and Associates Inc.

PROPOSED Ground Floor Plan

August 06, 2018