



December 09, 2019 | ©2019 Torti Gallas Urban | 650 F St NW, Suite 690 | Washington, DC 20004 | 202.232.3132



Skyland Town Center, Looking Southeast
 ZONING COMMISSION
 District of Columbia
 CASE NO. Z-19-117
 EXHIBIT NO. 3H3
SKYLAND TOWN CENTER



December 09, 2019 | ©2019 Torti Gallas Urban | 650 F St NW, Suite 690 | Washington, DC 20004 | 202.232.3132



Town Center Drive, Looking Southeast
SKYLAND TOWN CENTER



December 09, 2019 | ©2019 Torti Gallas Urban | 650 F St NW, Suite 690 | Washington, DC 20004 | 202.232.3132



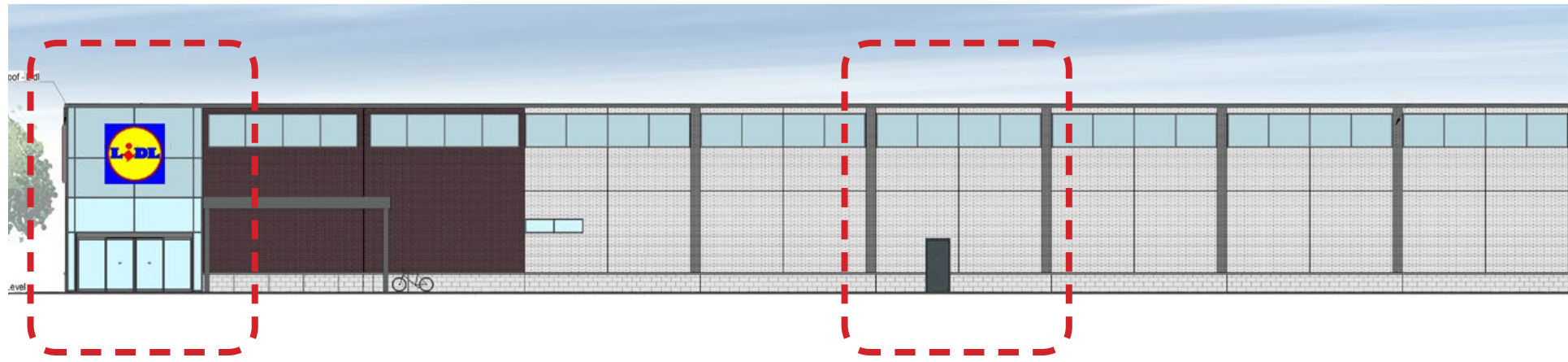
Skyland Town Center Plaza
SKYLAND TOWN CENTER



December 09, 2019 ©2019 Torti Gallas Urban | 650 F St NW, Suite 690 | Washington, DC 20004 | 202.232.3132



Skyland Town Center Entrance
SKYLAND TOWN CENTER



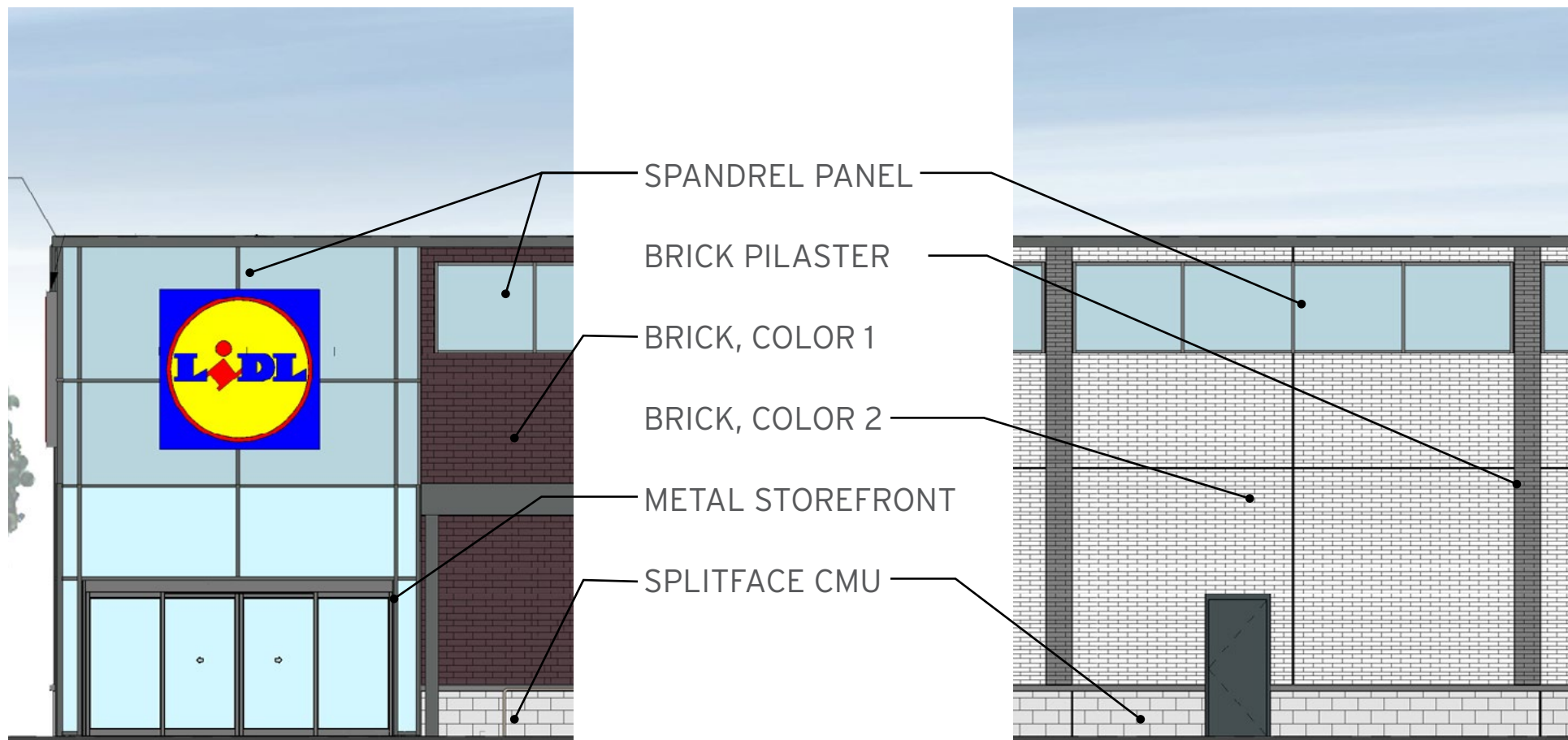
SPANDREL PANEL



METAL STOREFRONT



SPLITFACE CMU



SPANDREL PANEL

BRICK PILASTER

BRICK, COLOR 1

BRICK, COLOR 2

METAL STOREFRONT

SPLITFACE CMU



BRICK PILASTER

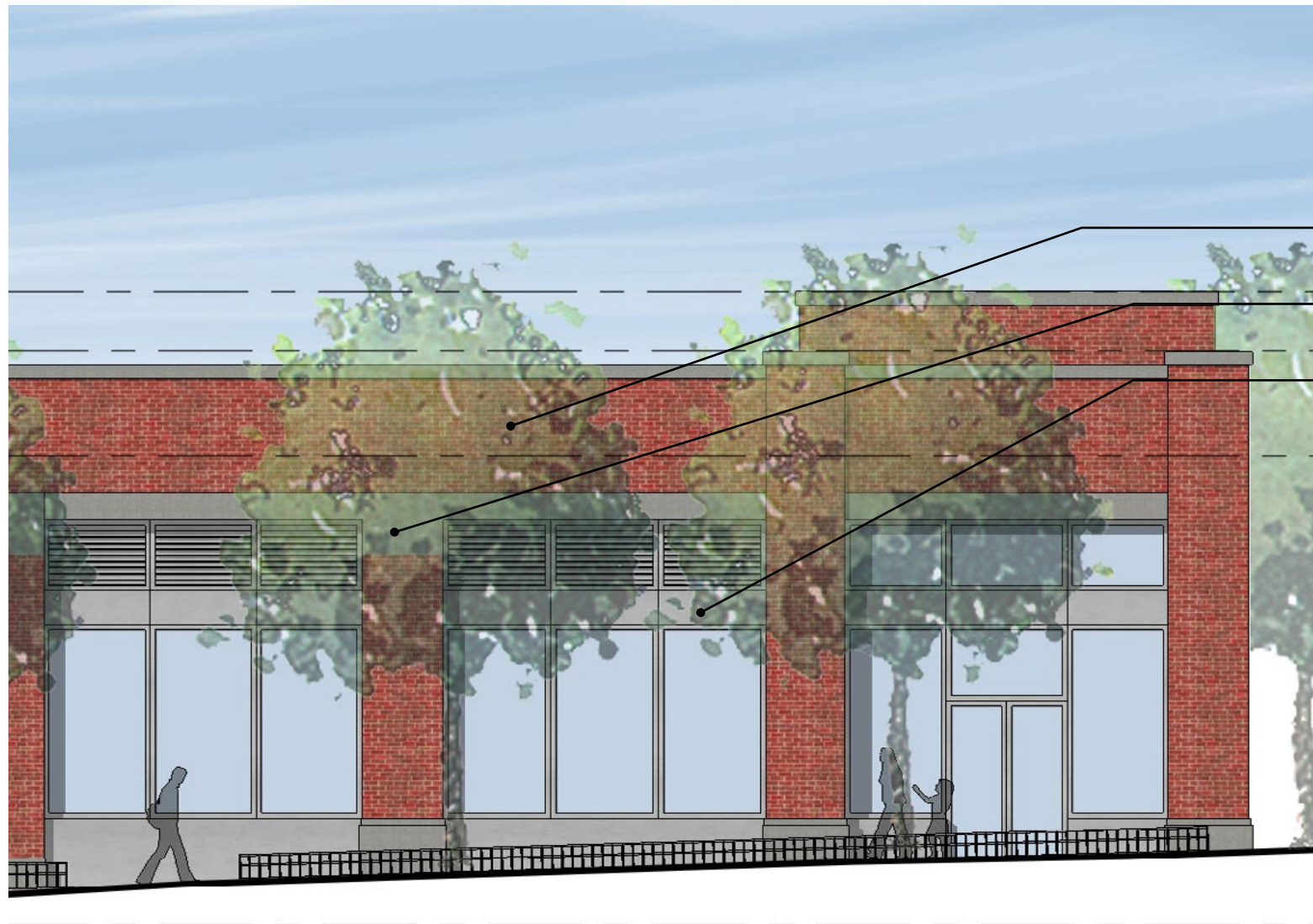


COLOR 1



COLOR 2

BRICK



BRICK

CAST STONE

METAL



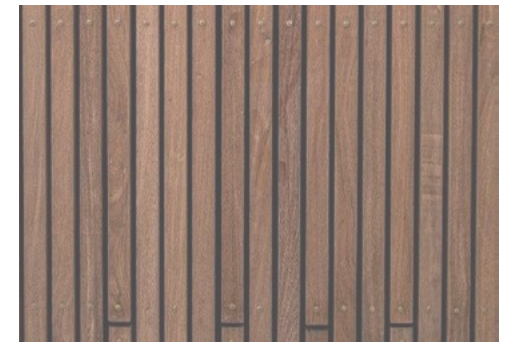
METAL



CAST STONE



BRICK



WOOD SIDING



STOREFRONT



WOOD SIDING

BRICK 1

STOREFRONT

BRICK 2



BRICK 1

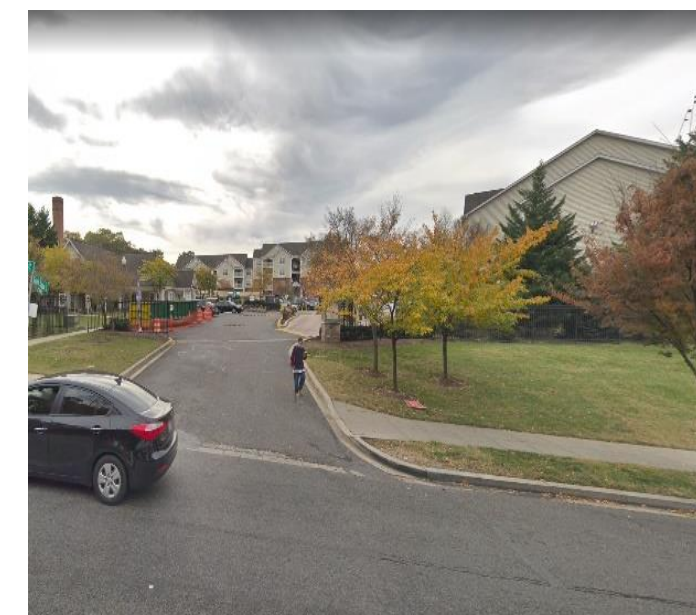
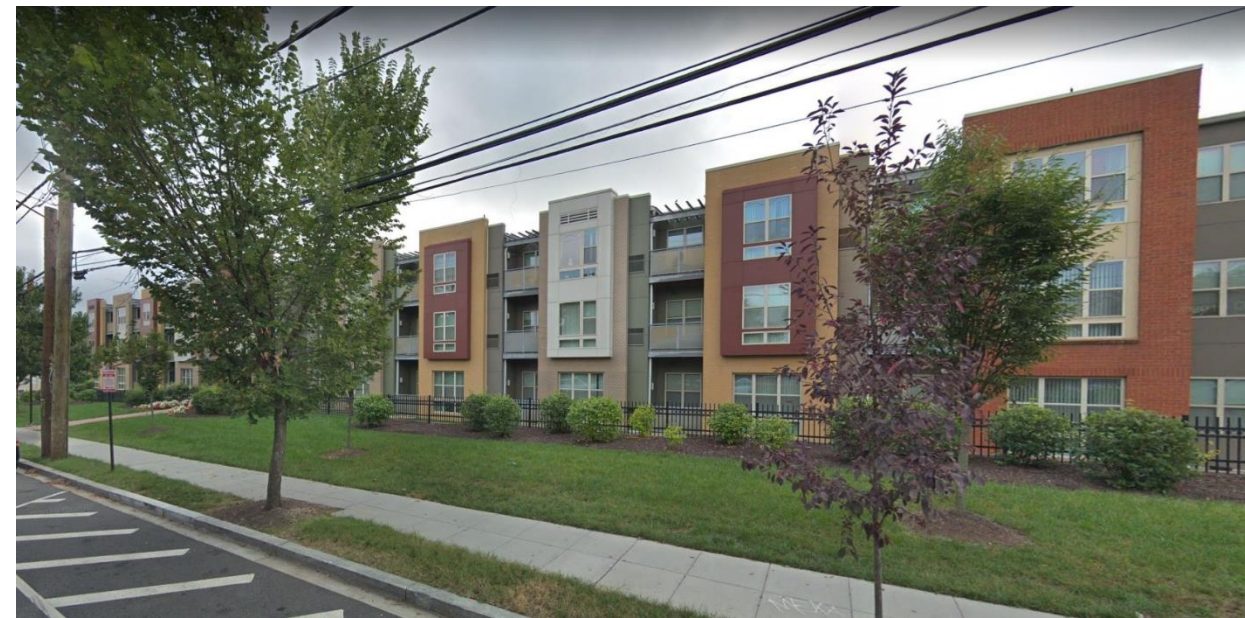


BRICK 2

THIS PAGE INTENTIONALLY LEFT BLANK

Building Image

Context + Character
Precedent and Context



Building Image

Context + Character
Design Style



Seneca Meadows Medical Office Building



Traditional



Transitional



Contemporary

Design Spectrum

8. Massing

- a. Upper stories should step back, particularly for tall buildings.
- b. Pilasters should run the entire height of the building.



Stepped-back volumes



Stepped-back volumes



Higher volume at corner



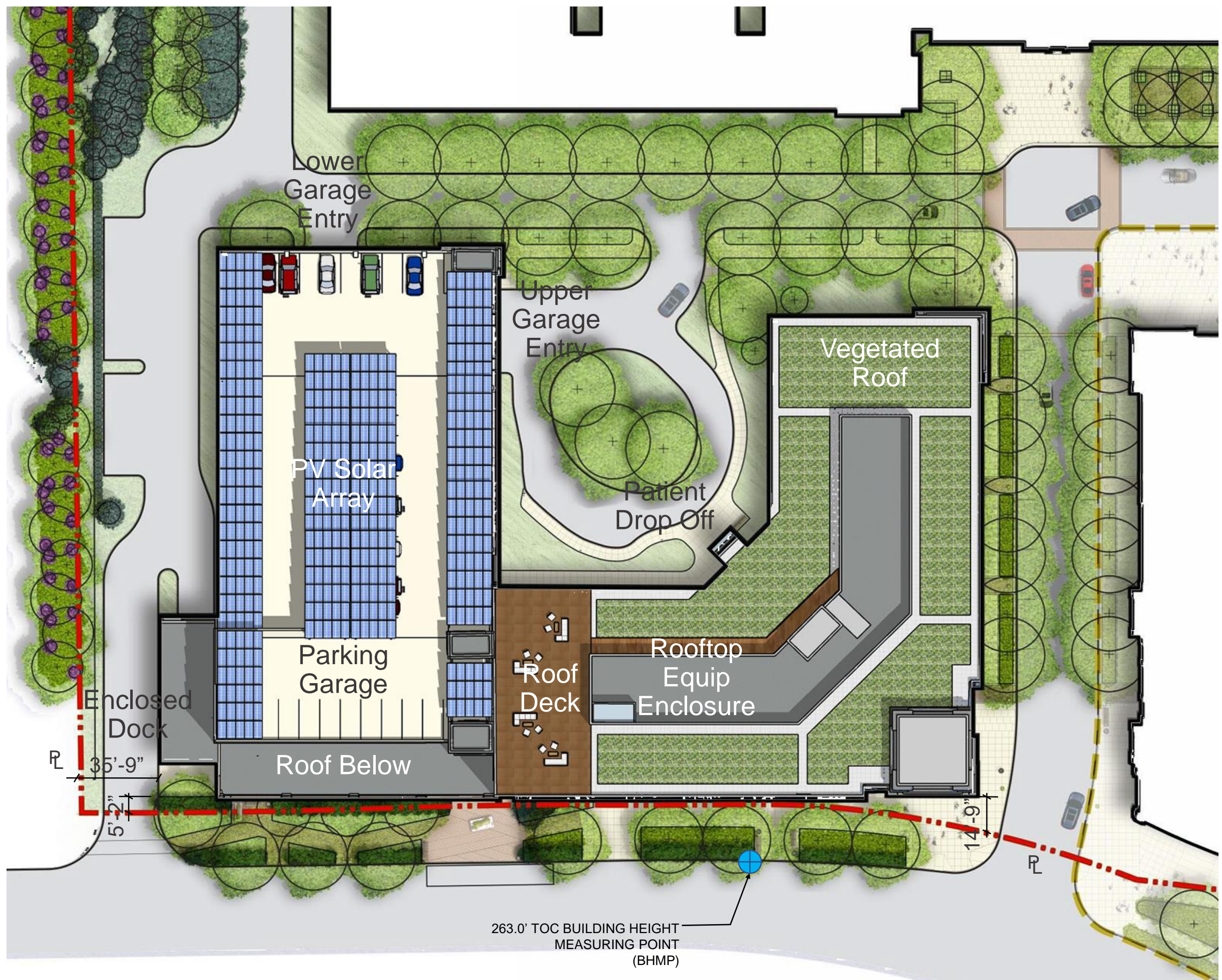
Traditional Forms & Ordering

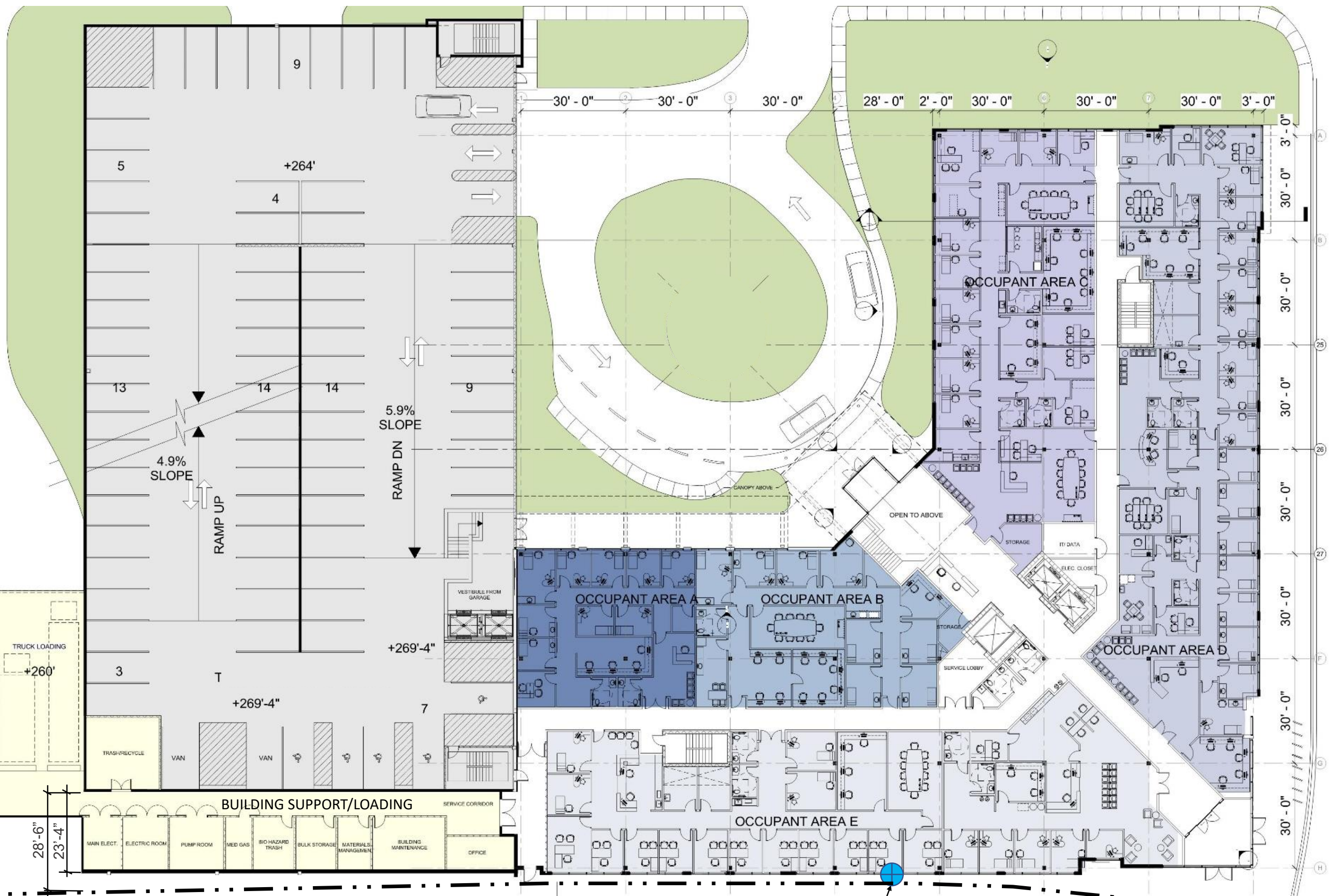


Use of Contemporary Materials

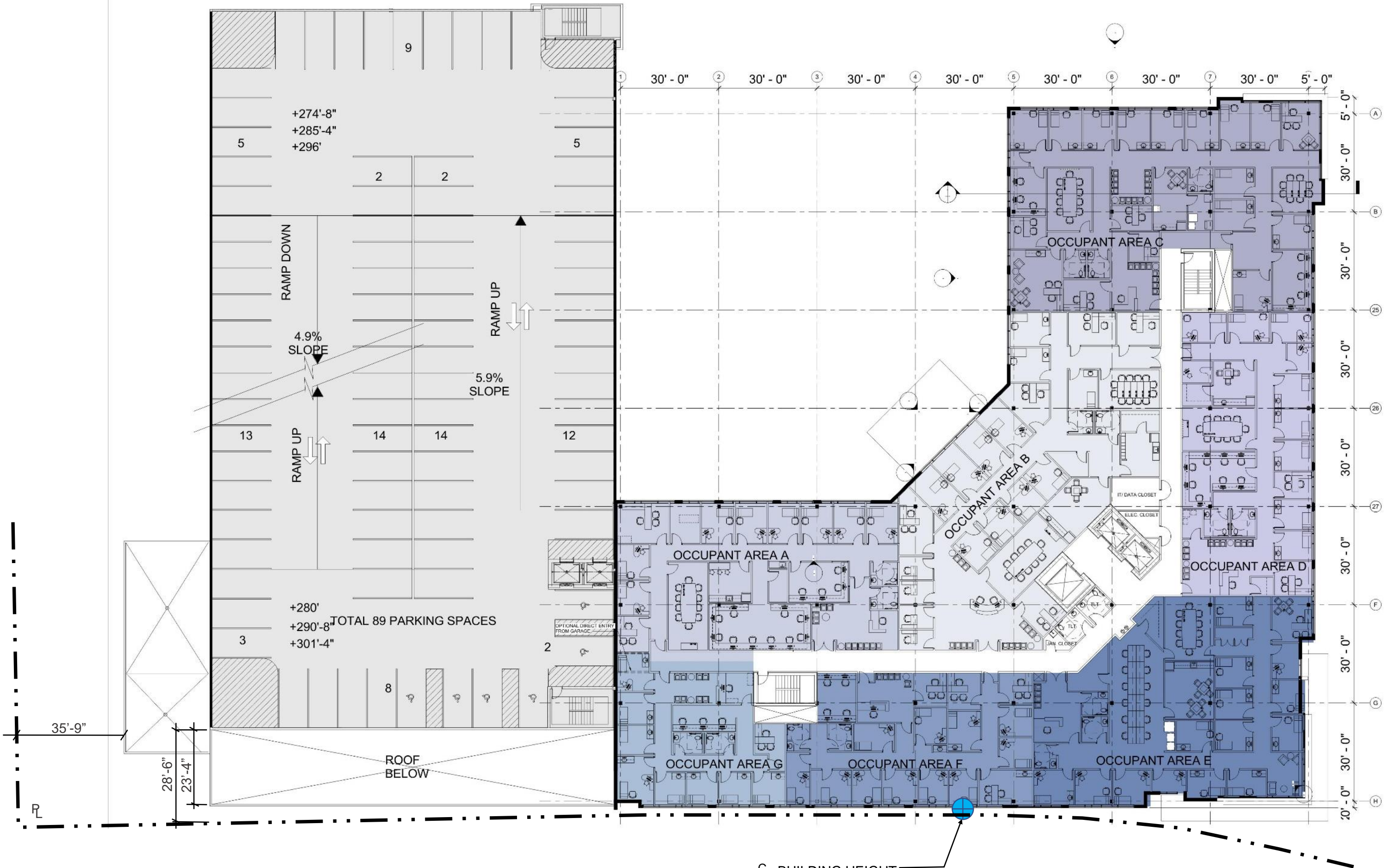
Building Image

Context + Character Design Vocabulary

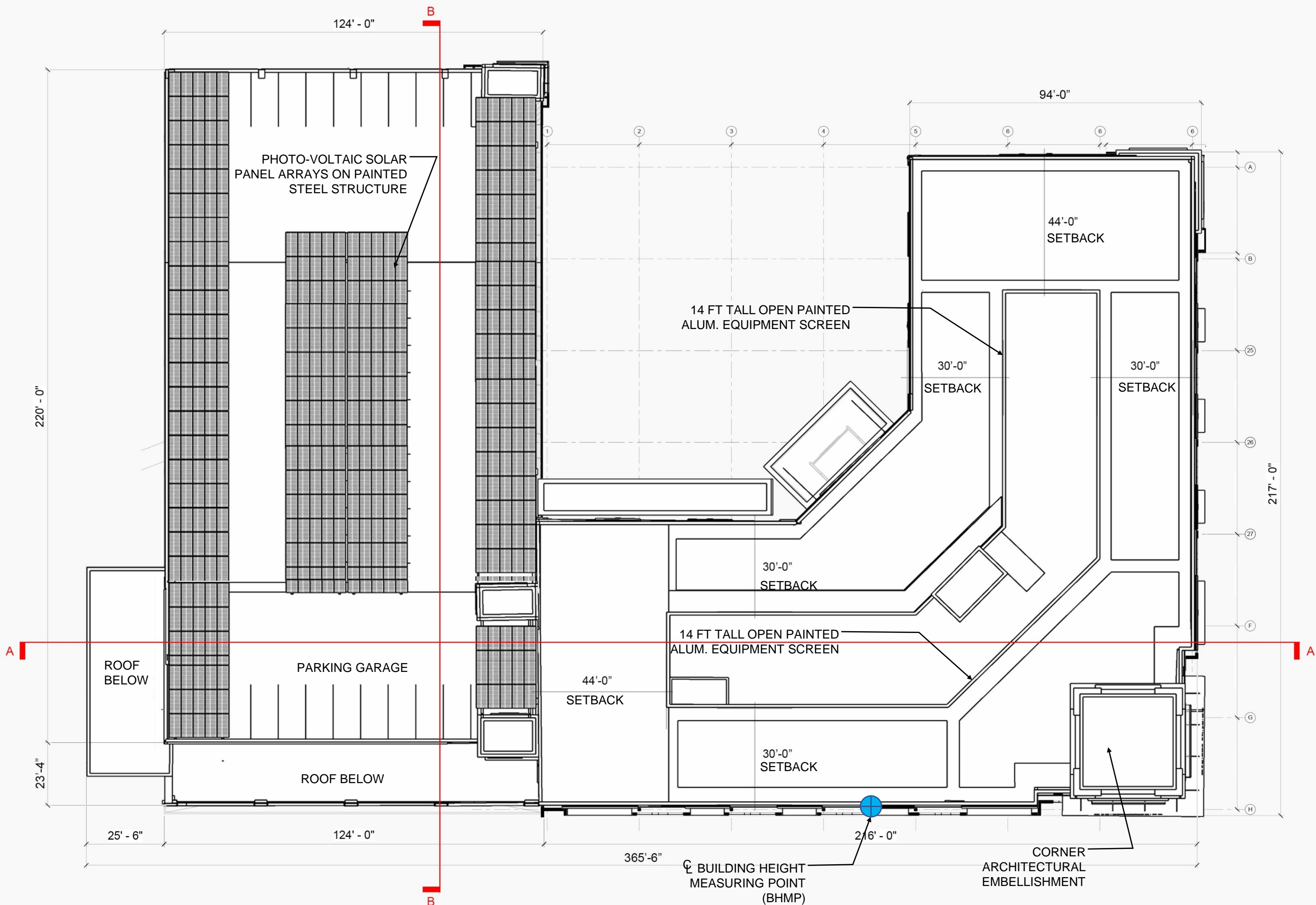


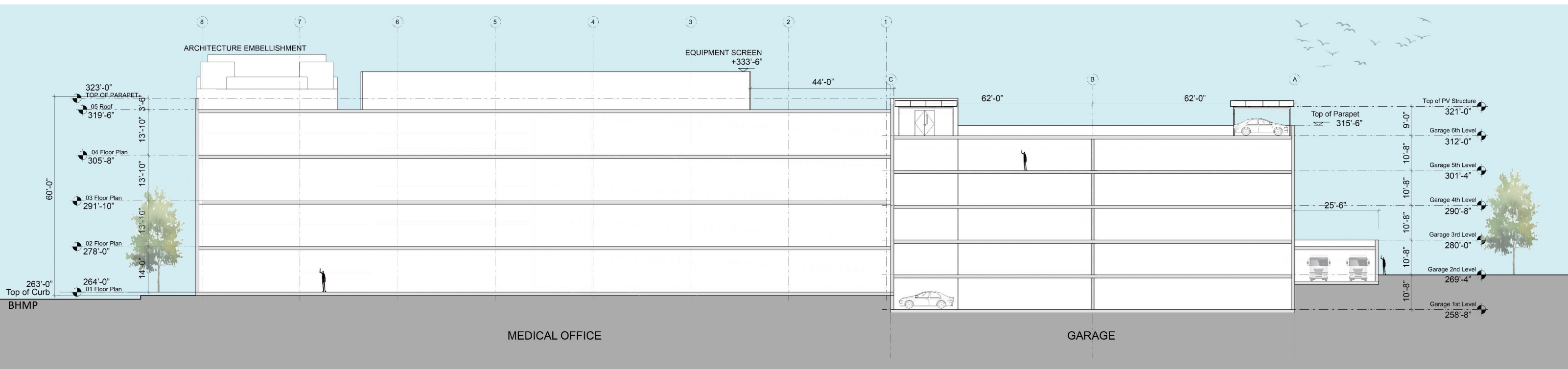


BUILDING HEIGHT
MEASURING POINT
(BHMP)

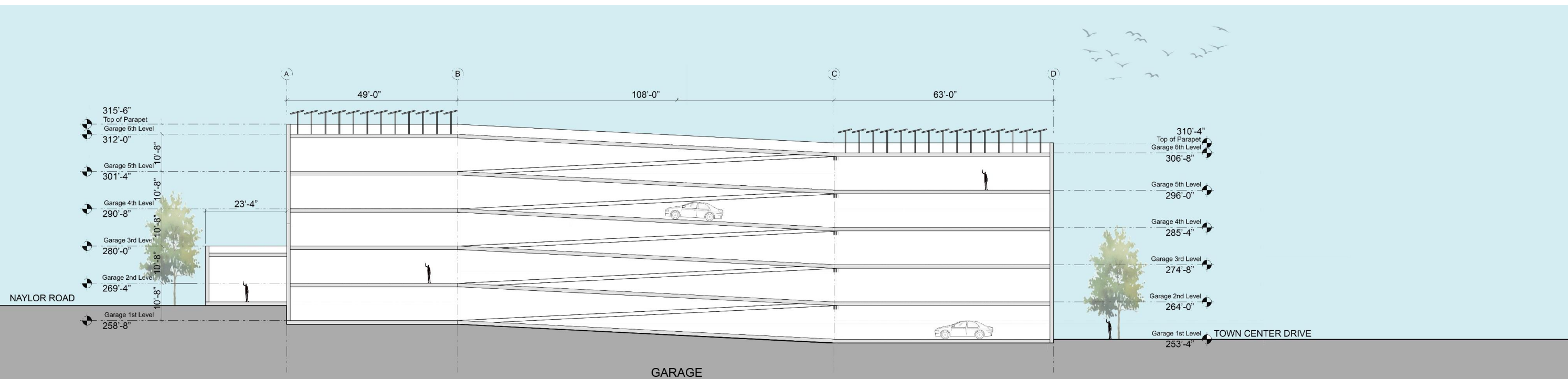


⊕ BUILDING HEIGHT MEASURING POINT (BHMP)





Section A



Section B