



SKYLAND TOWN CENTER

ISSUED:
MODIFICATION OF SIGNIFICANCE
CONSOLIDATED & PHASE 1 PUD APPLICATION

12/09/2019



ZONING COMMISSION
District of Columbia
CASE NO.09-03F
EXHIBIT NO.3H1

THIS PAGE INTENTIONALLY LEFT BLANK

SITE EXHIBITS

REGIONAL ANALYSIS	G01
LOCATION PLAN	G02
SITE AERIAL.....	G03
CONTEXT PHOTOS	G04
BLOCK 2 PHOTOS.....	G05
COMP. PLAN AND ZONING MAP.....	G06
ZONING ANALYSIS	G07
GFA DIAGRAMS - BLOCK 1	G08
GFA DIAGRAMS - BLOCK 3	G09
SITE PLAN	G10
SITE PLAN - ILLUSTRATIVE	G11
LOADING CIRCULATION PLAN	G12
RETAIL LOADING CIRCULATION PLAN	G13
LIDL LOADING TRUCK TURN.....	G14
PEDESTRIAN CIRCULATION PLAN	G15
PARKING PLAN.....	G16
BUILDING FOOTPRINT DIAGRAM.....	G17
MASSING VIEWS	G18
MASSING VIEWS	G19
MASSING VIEWS	G20

ARCHITECTURE EXHIBITS

BLOCK 4 - ILLUSTRATIVE SITE PLAN	A101
BLOCK 4 - GROUND FLOOR PLAN	A102
BLOCK 4 - TYPICAL FLOOR PLAN.....	A103
BLOCK 4 - GARAGE PLAN	A104
BLOCK 4 - BUILDING SECTIONS	A105
BLOCK 3 - PRECEDENT	A106
BLOCK 3 - ILLUSTRATIVE PLAN	A107
BLOCK 3 - GROUND FLOOR PLAN.....	A108
BLOCK 3 - SECTION THROUGH LIDL.....	A109
BLOCK 3 - SECTION THRU RETAIL BLDGS	A110
BLOCK 3 - ELEVATIONS	A111
BLOCK 3 - ELEVATIONS	A112
BLOCK 3 - ELEVATIONS	A113
BLOCK 3 - ELEVATIONS	A114
TOWN CENTER DRIVE, LOOKING NW	A115
TOWN CENTER DRIVE, LOOKING NW	A116
SKYLAND TOWN CENTER, LOOKING SE	A117
TOWN CENTER DRIVE, LOOKING SE.....	A118
SKYLAND TOWN CENTER PLAZA	A119
SKYLAND TOWN CENTER ENTRANCE	A120
BLOCK 3 MATERIALS.....	A121
BLOCK 3 MATERIALS.....	A122
BLOCK 3 MATERIALS.....	A123

ARCHITECTURE EXHIBITS

BUILDING IMAGE STUDY - DESIGN CONTEXT ...	A200
BUILDING IMAGE STUDY - DESIGN STYLE	A201
BUILDING IMAGE STUDY - DESIGN VOCABULARY ...	A202
SITE PLAN	A203
GROUND FLOOR PLAN.....	A204
TYPICAL FLOOR PLAN.....	A205
ROOF/DIMENSIONED BUILDING PLANS.....	A206
BUILDING SECTIONS.....	A207
MOB/GARAGE ELEVATIONS.....	A208
MOB/GARAGE ELEVATIONS.....	A209
CONTEXT STREETScape ELEVATIONS	A210
NAYLOR ROAD CORNER VIEW	A211
TOWN CENTER DRIVE CORNER VIEW	A212
PATIENT ARRIVAL COURT VIEW.....	A213
EXTERIOR FINISHES AND MATERIALS.....	A214
EXTERIOR FINISHES AND MATERIALS.....	A215

LANDSCAPE EXHIBITS

OVERALL PLAN.....	L01
DETAIL PLAN - ENTRY AREA.....	L02
DETAIL PLAN - PLAZA	L03
DETAIL PLAN - ART WALK	L04
PRECEDENTS - ART WALK PAVING.....	L05
PRECEDENTS - ART WALK EXHIBITS	L06
PRECEDENTS - ART WALK EXHIBITS	L07
SECTION - STARBUCKS STREETScape	L08
SECTION - RETAIL BUILDING STREETScape	L09
SECTION - M.O.B. STREETScape.....	L10

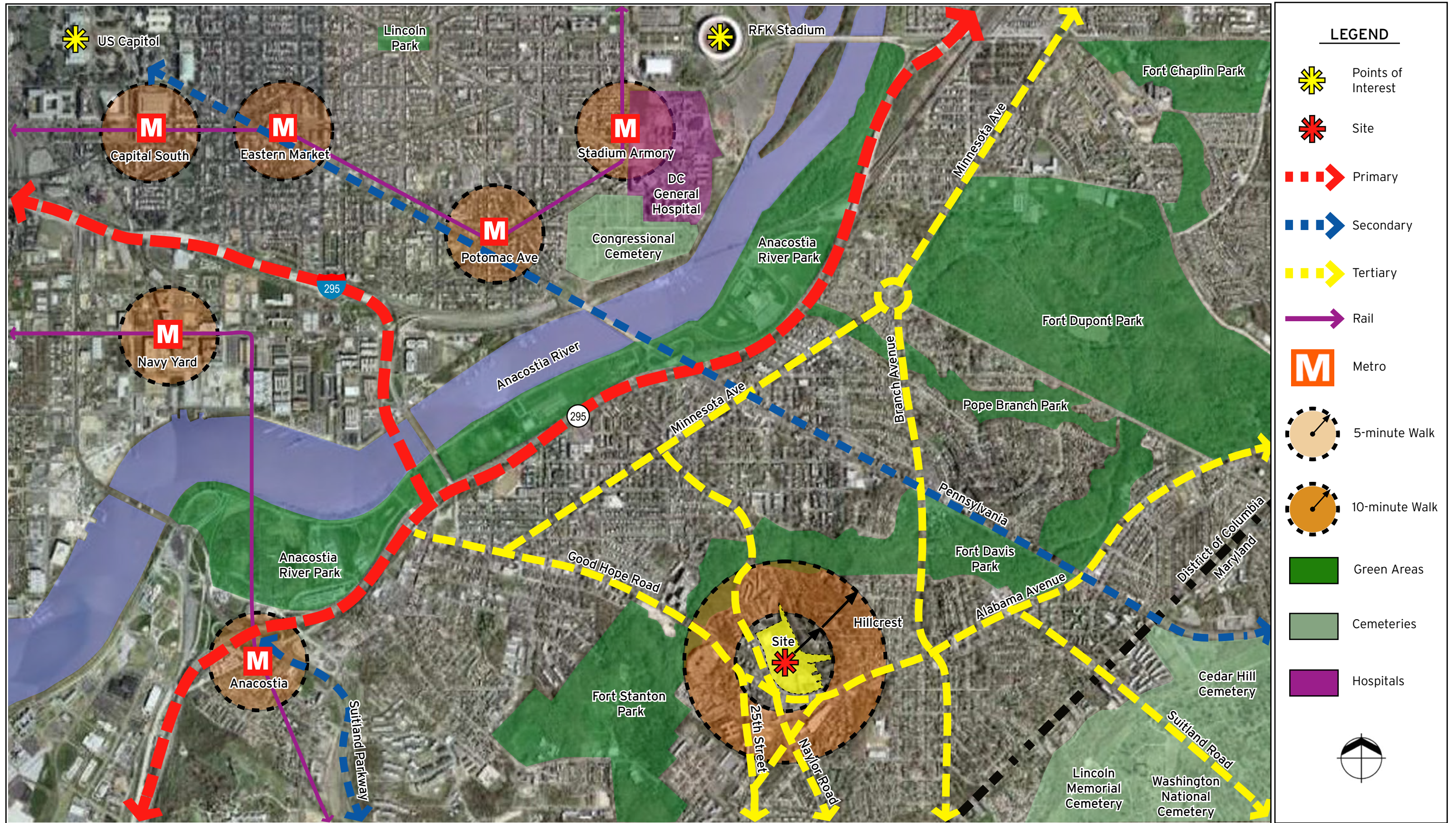
CIVIL EXHIBITS

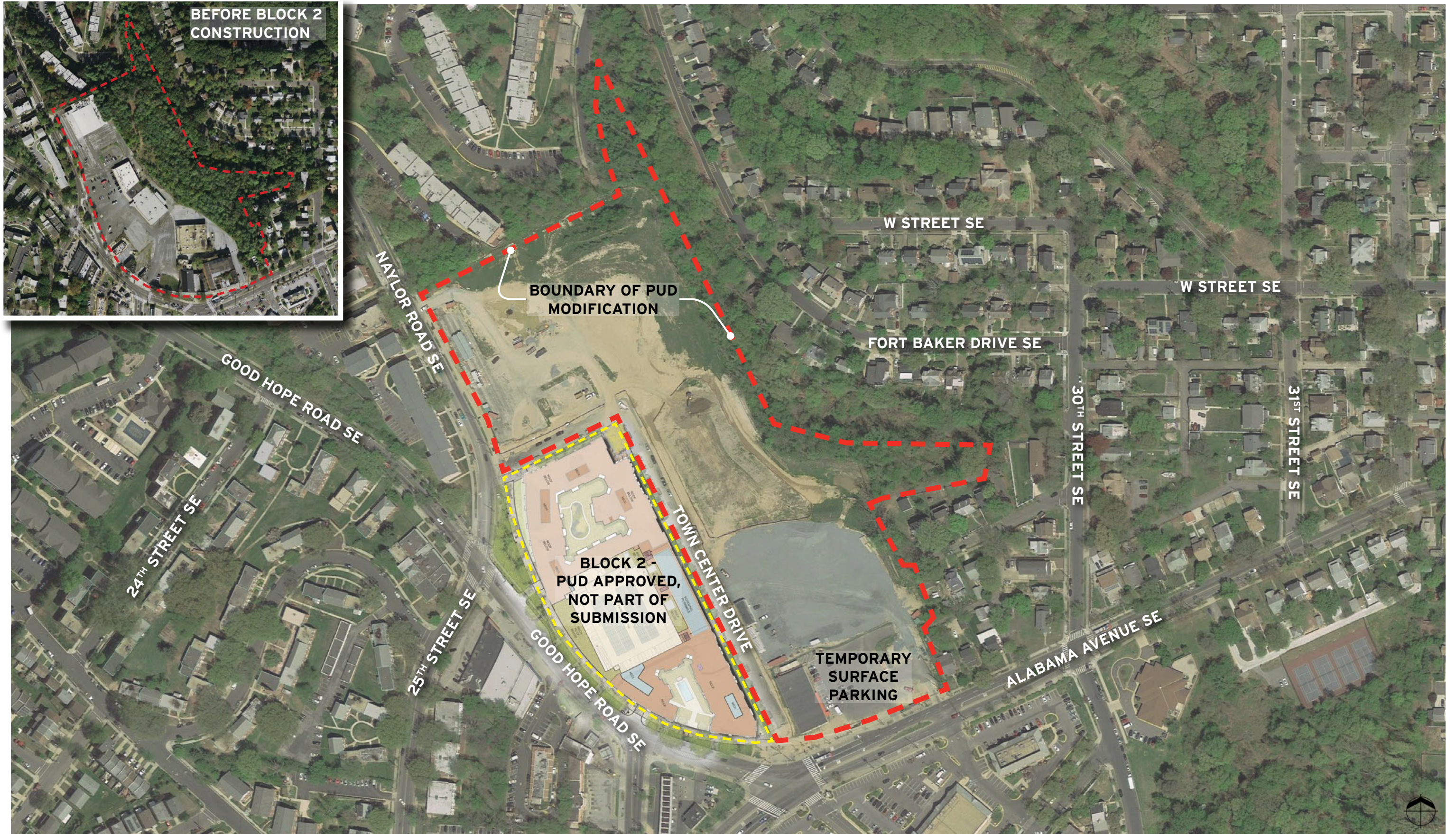
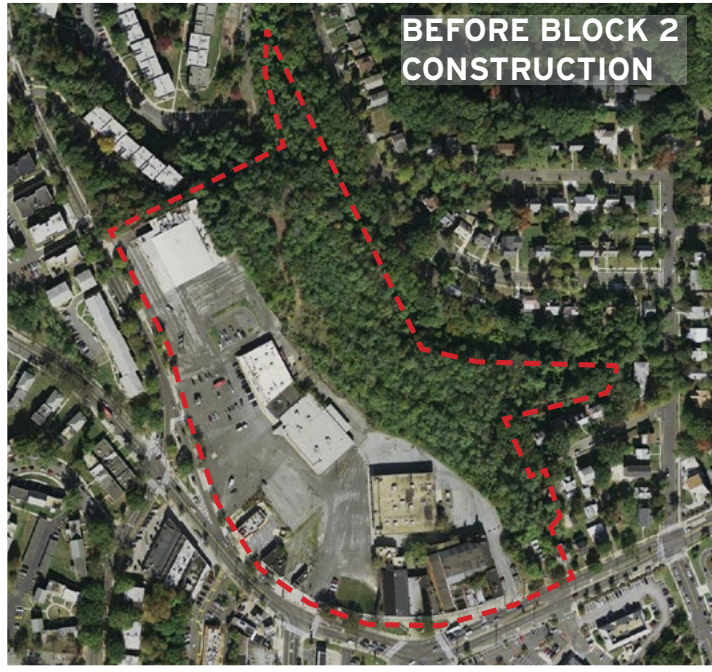
GENERAL NOTES AND LEGEND.....	C-1.0
EXISTING CONDITIONS/DEMOLITION PLAN.....	C-2.0
SITE PLAN - OVERALL.....	C-3.0
SITE PLAN - PHASE I	C-3.1
SITE PLAN - PHASE II	C-3.2
SITE PLAN - PHASE III	C-3.3
GRADING AND UTILITY PLAN - OVERALL.....	C-4.0
GRADING AND UTILITY PLAN - PHASE I.....	C-4.1
GRADING AND UTILITY PLAN - PHASE II	C-4.2
GRADING AND UTILITY PLAN - PHASE III	C-4.3
STORM WATER MANAGEMENT PLAN.....	C-5.0
EROSION AND SEDIMENT CONTROL PLAN.....	C-6.0

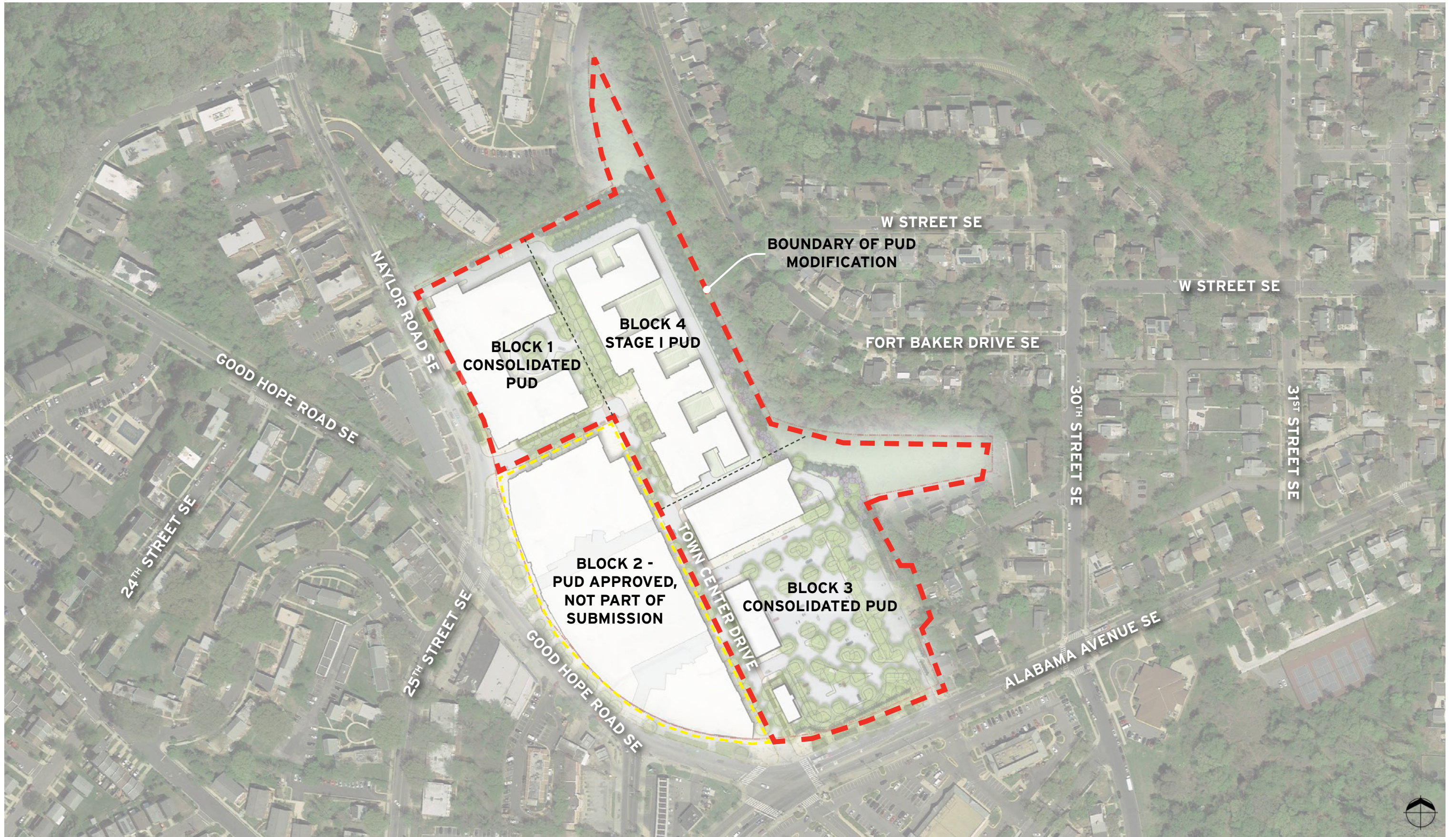
THIS PAGE INTENTIONALLY LEFT BLANK

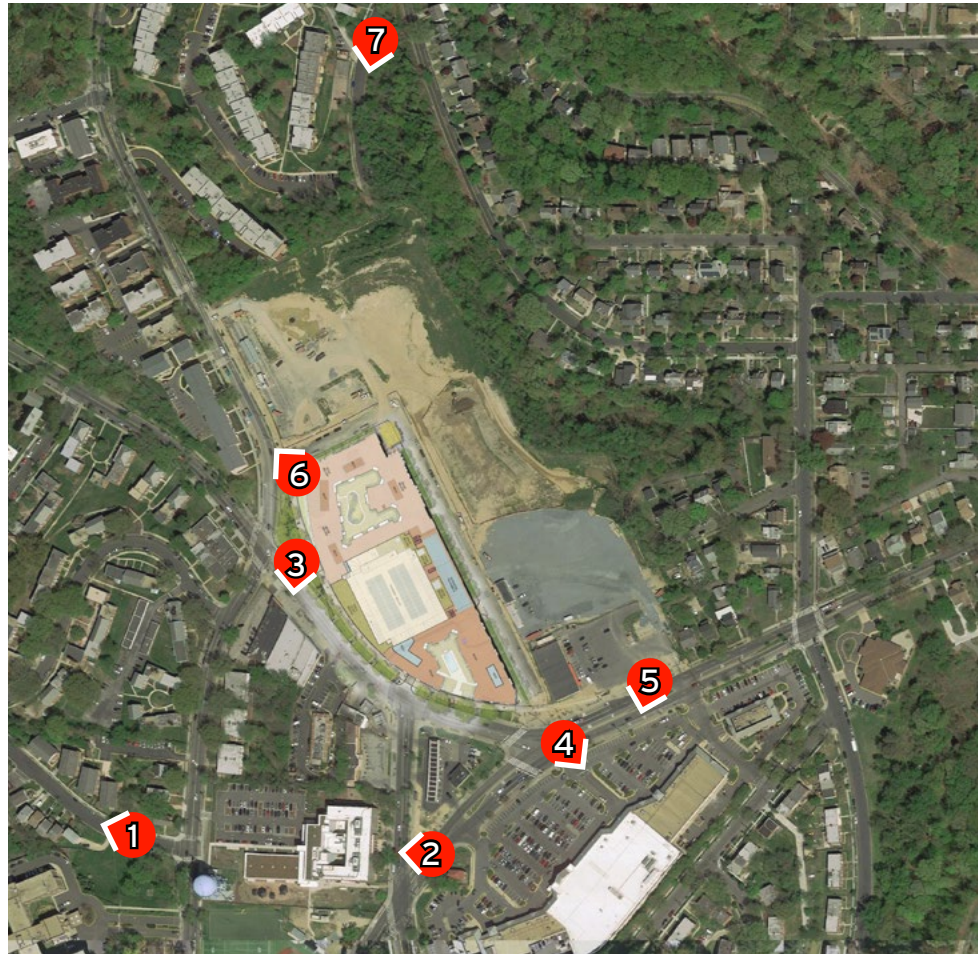
Site Exhibits

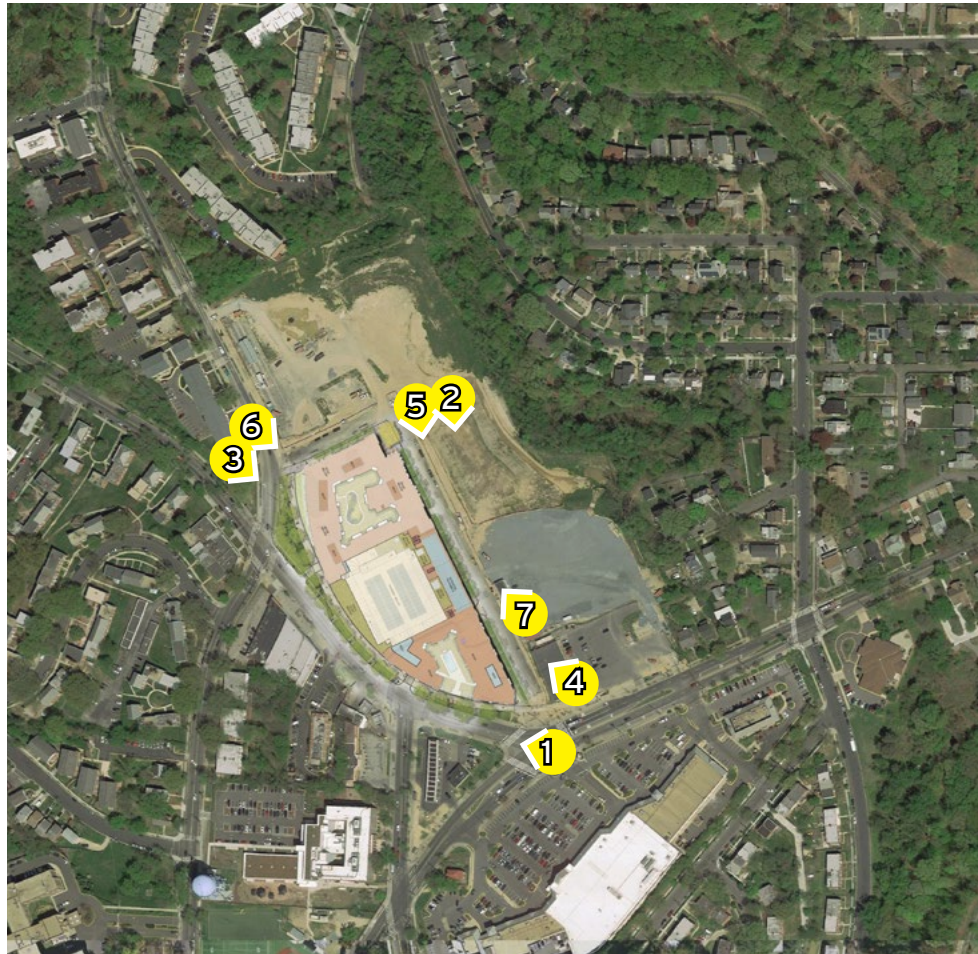
THIS PAGE INTENTIONALLY LEFT BLANK

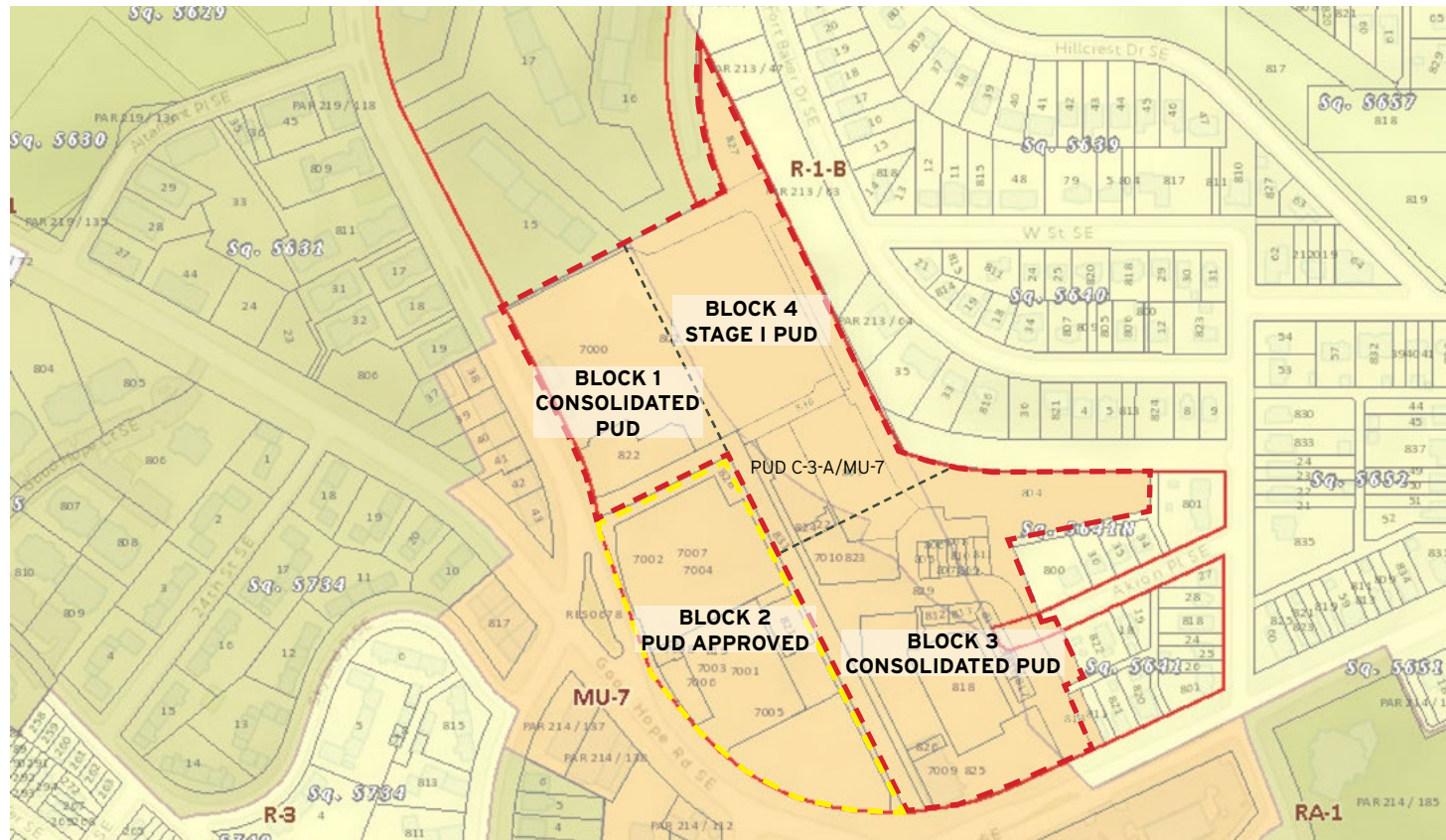




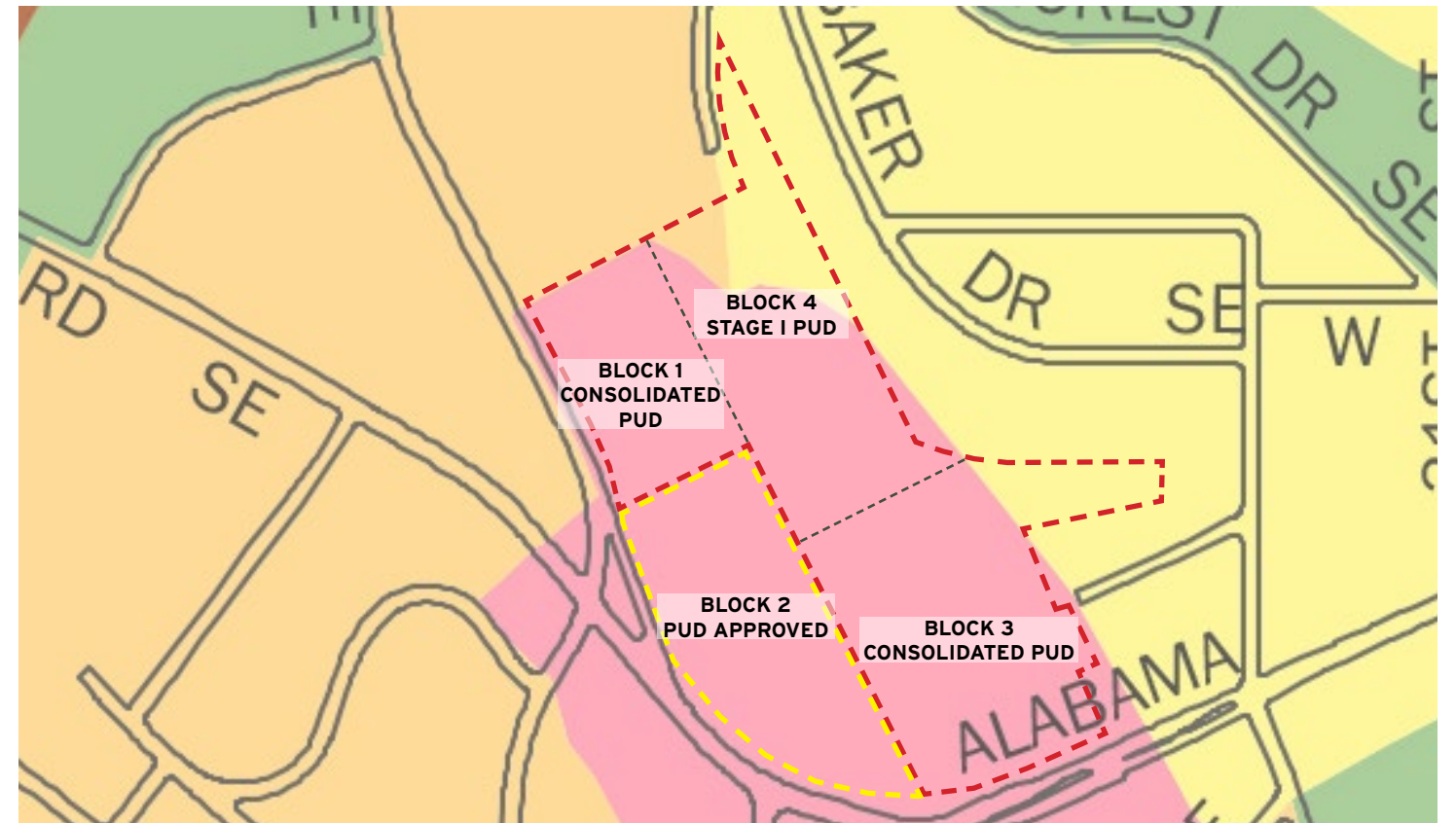




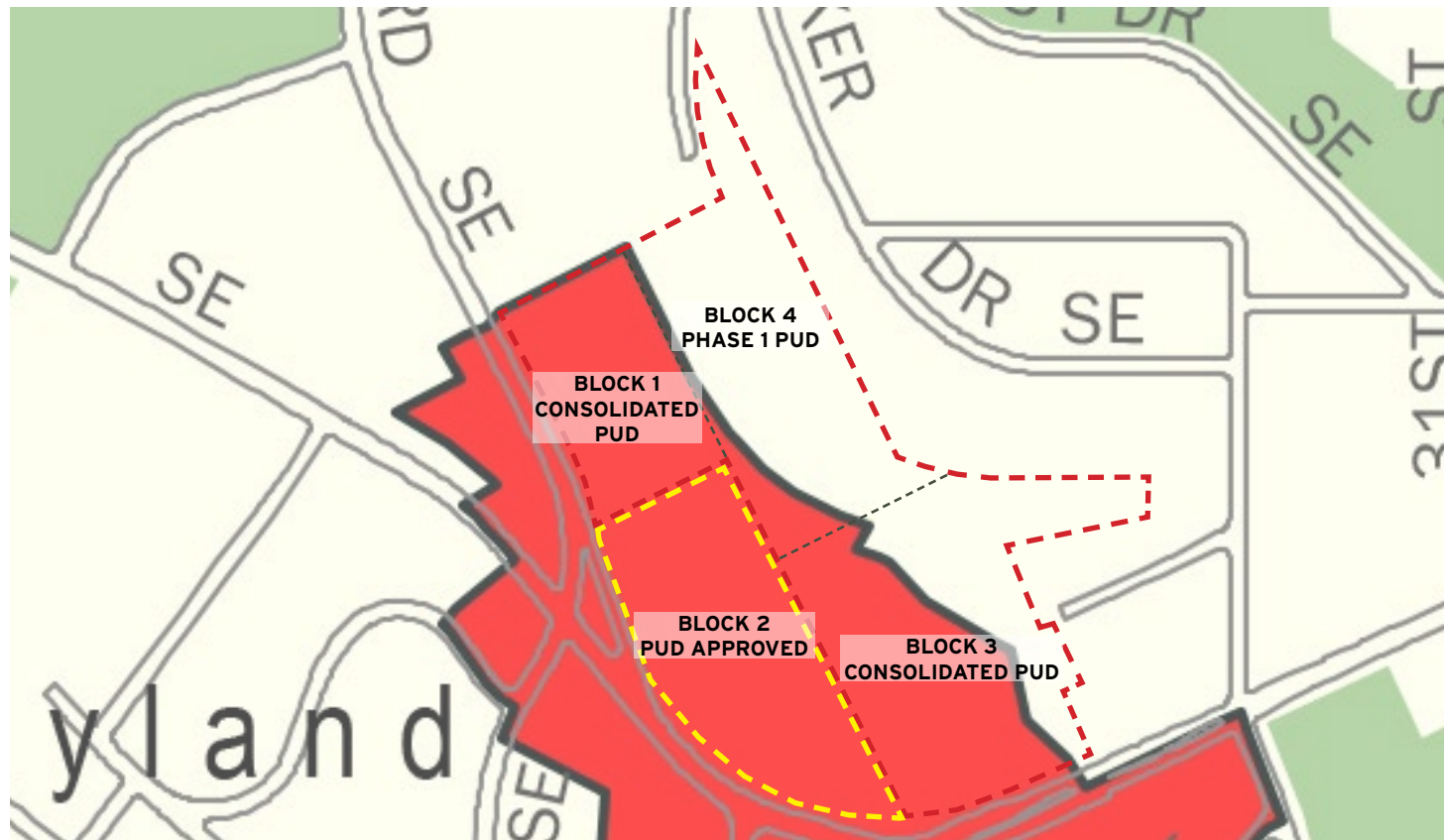




ZONING MAP



COMPREHENSIVE PLAN FUTURE LAND USE MAP



DC COMP PLAN GENERALIZED POLICY MAP

December 09, 2019 ©2019 Torti Gallas Urban | 650 F St NW, Suite 690 | Washington, DC 20004 | 202.232.3132

COMP PLAN GENERALIZED POLICY LEGEND

- Neighborhood Conservation Areas
- Neighborhood Enhancement Areas
- Land Use Change Areas
- Land Use Change Areas (Federal)
- Commercial/ Mixed Use Areas**
- Main Street Mixed Use Corridors
- Neighborhood Commercial Centers
- Enhanced/New Neighborhood Centers
- Multi-Neighborhood Centers
- Enhanced/New Multi-Neighborhood Centers
- Regional Centers

COMPREHENSIVE PLAN FUTURE LAND USE LEGEND

- Low Density Residential
- Moderate Density Residential
- Medium Density Residential
- High Density Residential
- Low Density Commercial
- Moderate Density Commercial
- Medium Density Commercial
- High Density Commercial
- Production, Distribution, and Repair
- Federal
- Local Public Facilities
- Institutional
- Parks, Recreation, and Open Space

SKYLAND TOWN CENTER ZONING ANALYSIS

	Previous PUD	Proposed Modification
FAR	1.75 Total 0.97 Commercial	1.63 Total 0.89 Commercial
	Gross Floor Area by Block	Gross Floor Area by Block
Block 1	179,395	Block 1 280,978
Block 2	744,486	Block 1 - M.O.B. 131,334
Block 3	189,818	Block 1 - Structured Parking 149,644
Block 4	117,595	Block 2* 534,880
Block 5	18,144	Block 3 41,229
Total Building Area	1,249,438	Lidl Grocery 28,954
		In-Line Retail 9,792
		Fast Casual 2,483
		Block 4 (Previous Block 1 & 4) 312,230
		Multifamily Building 243,090
		Structured Parking 62,000
		Retail 7,140
		Block 5 N/A
		Total Building Area 1,169,317
	Gross Floor Area by Use	Gross Floor Area by Use
Residential	540,063	Residential 533,270
Retail	341,671	Retail 153,349
Office	N/A	Office 131,344
Structured Parking	367,704	Structured Parking 351,354
Total	1,249,438	Total 1,169,317
BUILDING HEIGHT	Block 1 - Up to 50' at Main Street; 45' on Naylor	Block 1 - Up to 60'
	Block 2 - Up to 62'	Block 2* - Up to 62'
	Block 3 - Up to 62'	Block 3 - Up to 30'
	Block 4 - Up to 62'	Block 4 - Up to 50'
	Block 5 - Up to 40'	Block 5 - N/A

	Previous PUD	Proposed Modification
PARKING	1,406 total parking spaces	1,276 total parking spaces
RESIDENTIAL	442 Res. Spaces Provided 21 for One Family Dwellings at 1.6 spaces per unit 421 for Apartments at .88 spaces per dwelling unit Min. 60% of required to be full size per (11 DCMR 2114.2) 421 x .6 = 253 full size spaces required	405 Res. Spaces Provided 157 Garage spaces for Block 4 Multifamily at .62 spaces/unit 248 Garage spaces for Block 2 Multifamily
RETAIL	964 Retail Spaces	406 Retail Spaces 6 Garage spaces for Block 4 Retail 199 Garage spaces for Block 2 Retail 201 Surface lot spaces for Block 3 Retail
OFFICE	N/A	465 Garage Spaces for M.O.B.
LOADING	Per Zoning Regulations of 1958	Block 1 - M.O.B. 2 loading berths @ 10' x 30', 1 platform @ 100 sf, 1 service/delivery @ 10' x 20' Block 2* - Residential and Retail Provided as Required Block 3 - Retail Grocery: 1 loading berth @ 12' x 55' and 1 platform @200 sf provided. RELIEF REQUESTED from requirement for 2 10' x 30' berths and 100 sf platforms and 1 service/delivery @ 10' x 20'. In-Line: Loading from rear along parking lot drive aisle provided. RELIEF REQUESTED from requirement for 1 berth @ 10' x 30' and platform @ 100 sf. Block 4 - Multifamily 2 loading berths @ 10' x 30', 2 platforms @ 100 sf, 1 service/delivery @ 10' x 20'

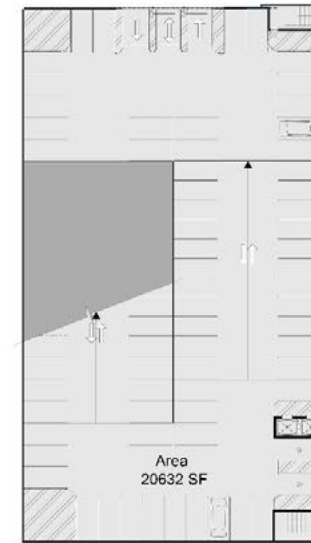
* Block 2 - Under Construction, information as per Permit Submission and Approved PUD

Indicates Relief from Zoning Requirements Requested

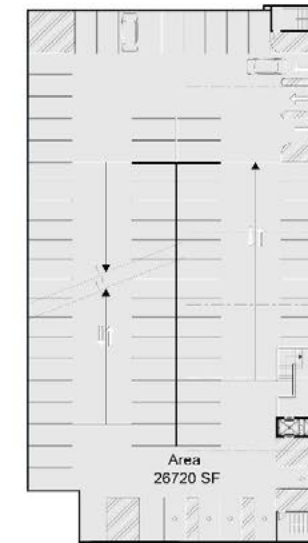
Indicates Stage I PUD

BUILDING AREAS

	Medical Office	Garage
Floor		
1st Floor	36,866 SF GFA*	
2nd Floor	31,192 SF GFA	
3rd Floor	31,638 SF GFA	
4th Floor	31,638 SF GFA	
Sub Total	131,334 SF GFA	
1st Level		20,632 SF GFA
2nd Level		26,720 SF GFA
3rd Level		27,220 SF GFA
4th Level		27,220 SF GFA
5th Level		27,220 SF GFA
6th Level		20,632 SF GFA
Sub Total		149,644 SF GFA
Total GFA		280,978 SF GFA
* Includes Loading/Service Area		



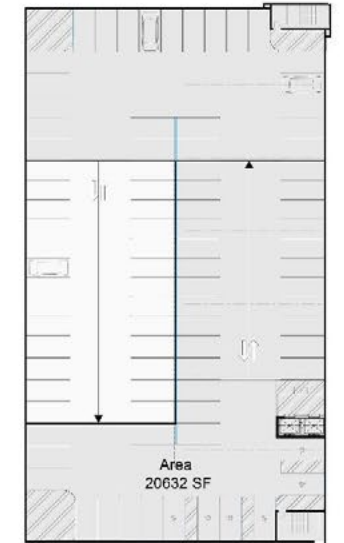
GARAGE - BASEMENT LEVEL



GARAGE - LEVEL 1



GARAGE - TYP. FLOOR LEVEL 2 - 4



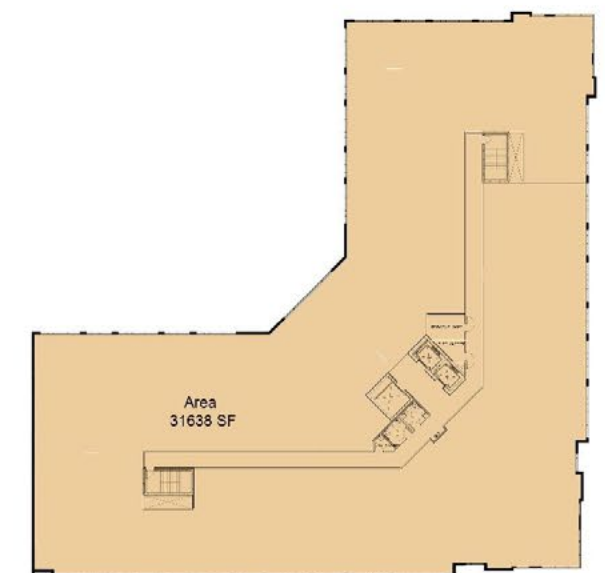
GARAGE - LEVEL 5



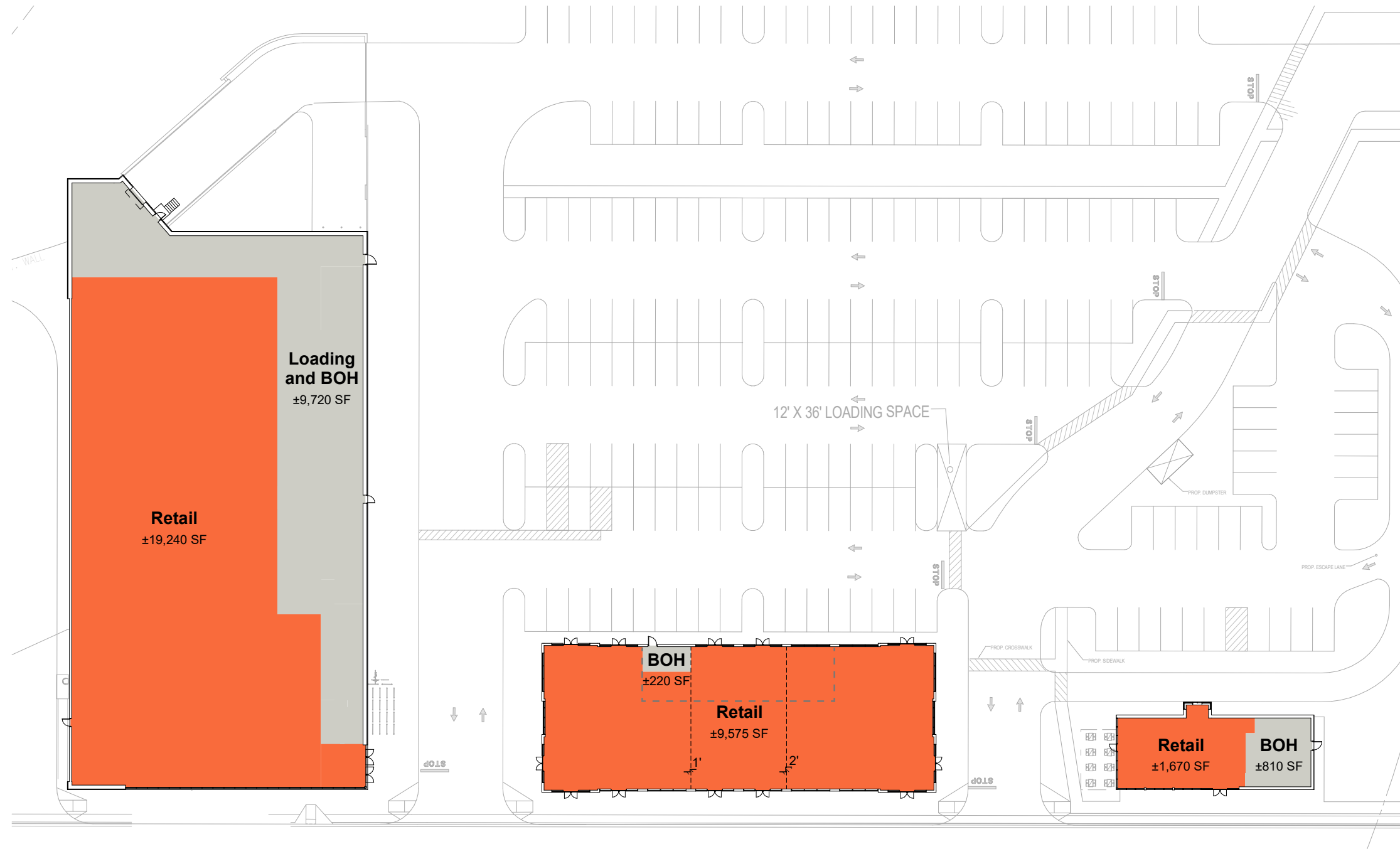
FIRST FLOOR



SECOND FLOOR



TYPICAL FLOOR (THIRD FLOOR & FOURTH FLOORS)



BUILDING AREA			
Building	Retail	Loading and BOH	Total GFA
Lidl	19,238	9,716	28,954
Inline Retail	9,575	217	9,792
Fast Casual	1,674	809	2,483
TOTAL			41,229



