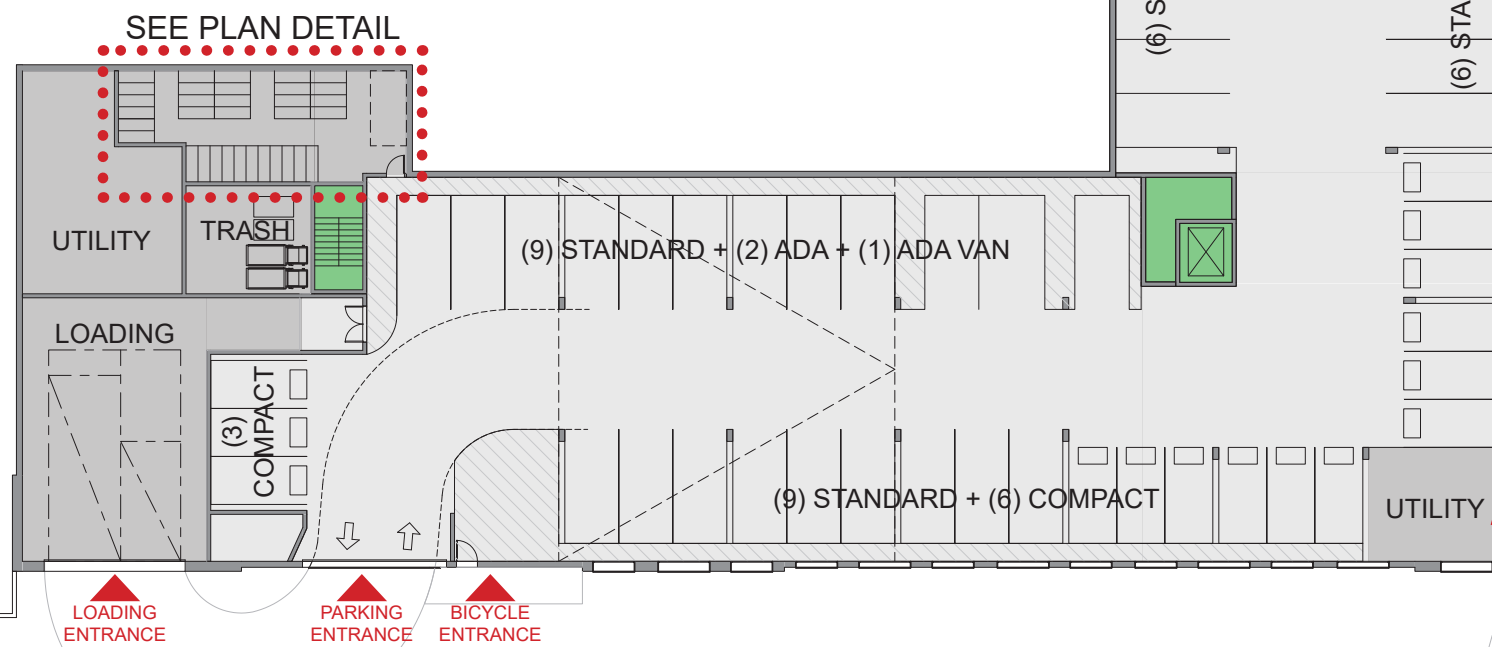
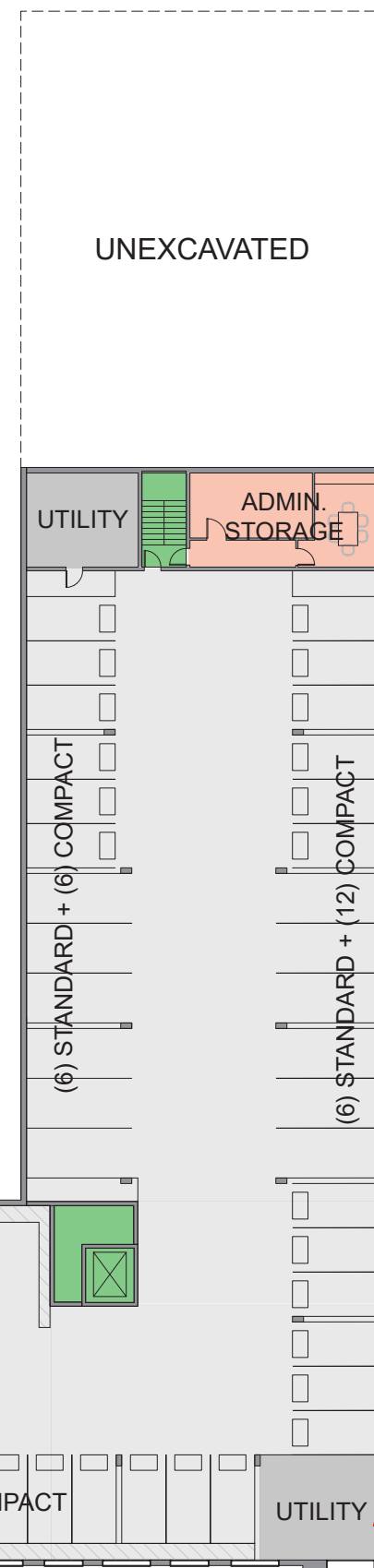
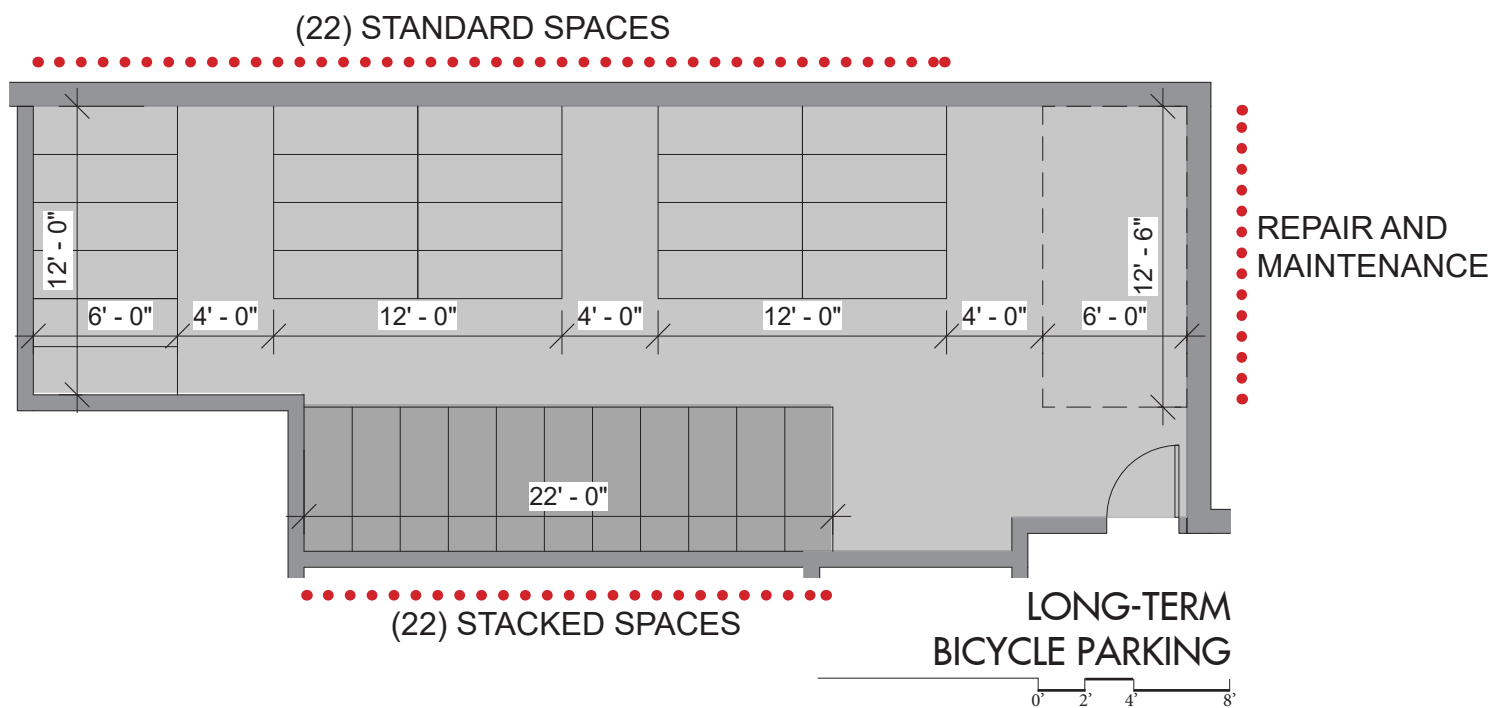


NOTE: DEMISING WALLS, QUANTITY AND SIZE OF UNITS, EGRESS WELLS AND RETAINING WALLS, COMMON, UTILITY AND AMENITY SPACES, STAIRS AND ELEVATORS, PARKING AND LOADING CONFIGURATIONS, ARE PRELIMINARY. FINAL LAYOUTS MAY VARY.

P-1 PARKING AND LOADING LEVEL PLAN

0' 5' 15' 30'



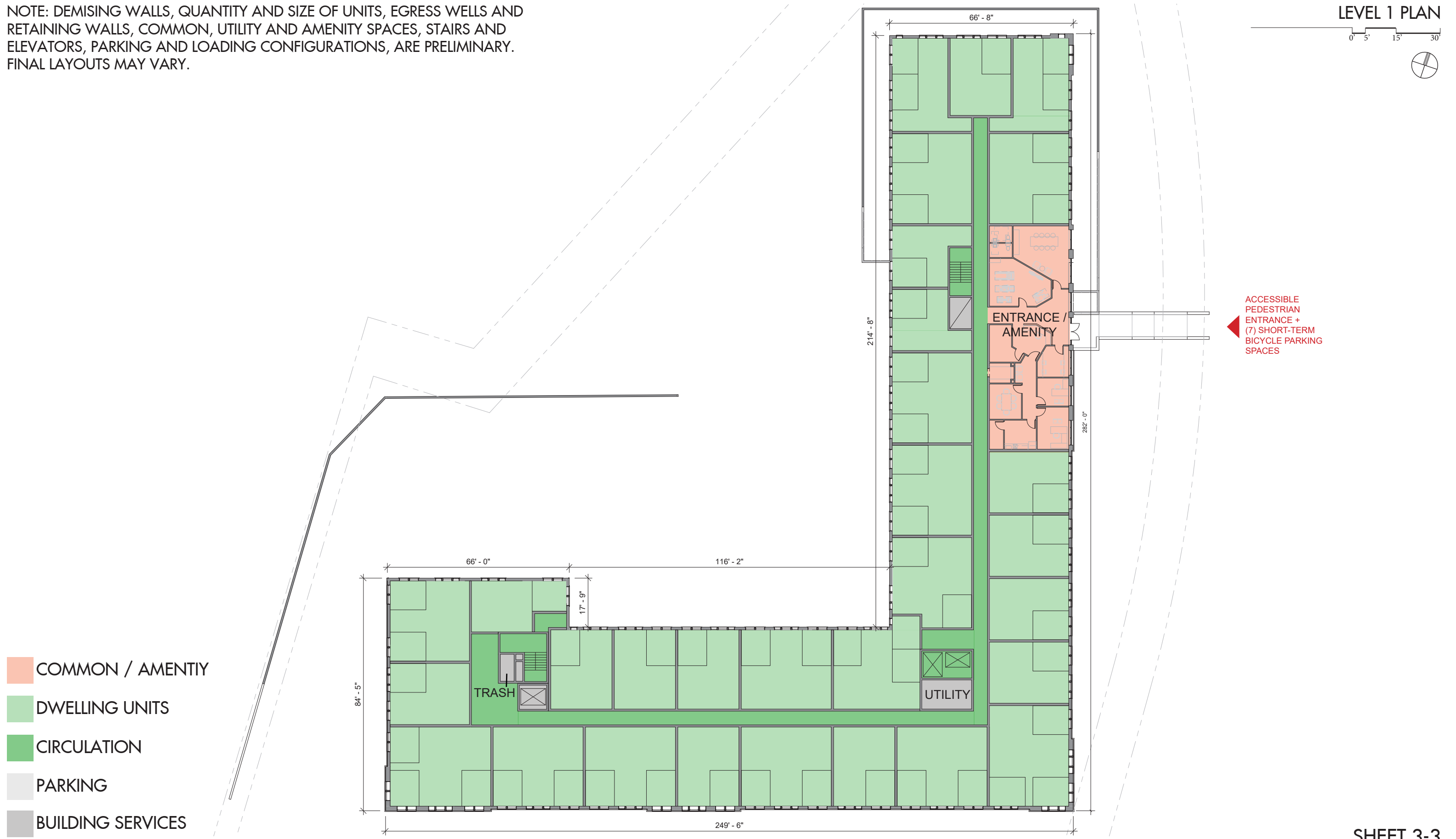
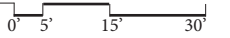
20'-0" FROM PROP. LINE

- COMMON / AMENITY
- DWELLING UNITS
- CIRCULATION
- PARKING
- BUILDING SERVICES

SHEET 3-2

NOTE: DEMISING WALLS, QUANTITY AND SIZE OF UNITS, EGRESS WELLS AND RETAINING WALLS, COMMON, UTILITY AND AMENITY SPACES, STAIRS AND ELEVATORS, PARKING AND LOADING CONFIGURATIONS, ARE PRELIMINARY. FINAL LAYOUTS MAY VARY.

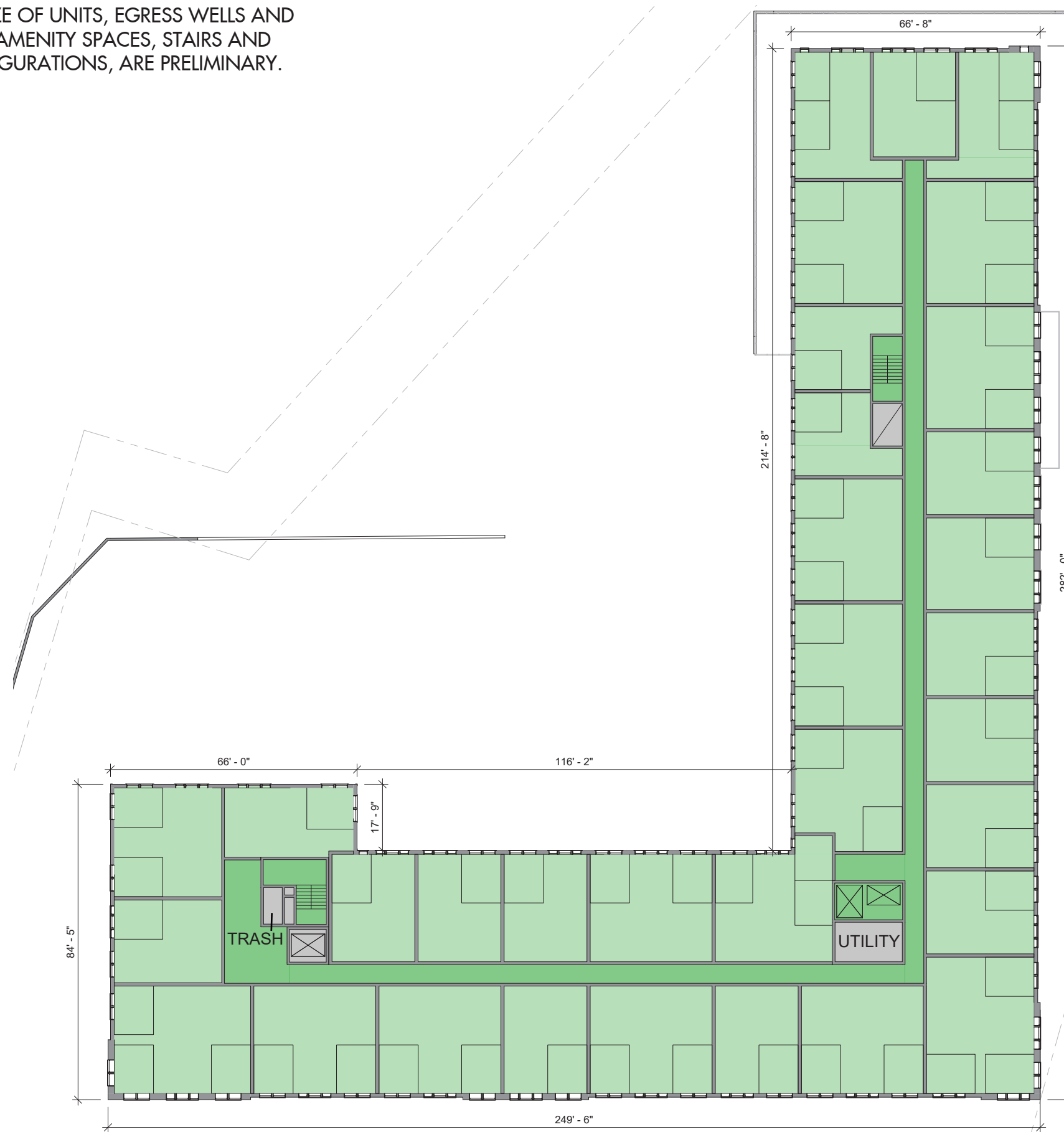
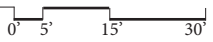
LEVEL 1 PLAN



- COMMON / AMENITY
- DWELLING UNITS
- CIRCULATION
- PARKING
- BUILDING SERVICES

NOTE: DEMISING WALLS, QUANTITY AND SIZE OF UNITS, EGRESS WELLS AND RETAINING WALLS, COMMON, UTILITY AND AMENITY SPACES, STAIRS AND ELEVATORS, PARKING AND LOADING CONFIGURATIONS, ARE PRELIMINARY. FINAL LAYOUTS MAY VARY.

LEVELS 2 AND 3 (TYPICAL) PLAN

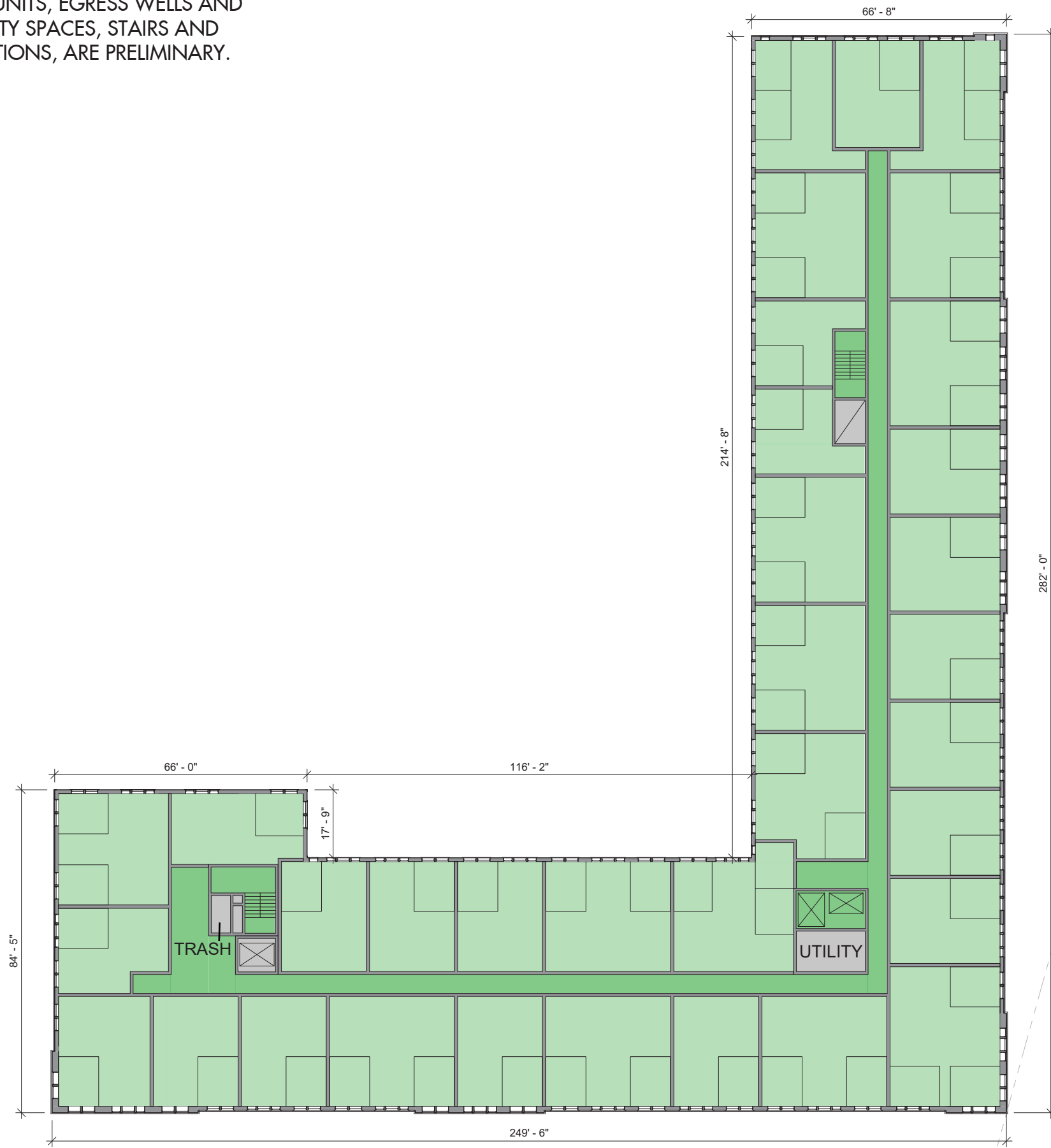
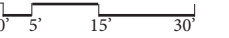


- COMMON / AMENITY
- DWELLING UNITS
- CIRCULATION
- PARKING
- BUILDING SERVICES

SHEET 3-4

NOTE: DEMISING WALLS, QUANTITY AND SIZE OF UNITS, EGRESS WELLS AND RETAINING WALLS, COMMON, UTILITY AND AMENITY SPACES, STAIRS AND ELEVATORS, PARKING AND LOADING CONFIGURATIONS, ARE PRELIMINARY. FINAL LAYOUTS MAY VARY.

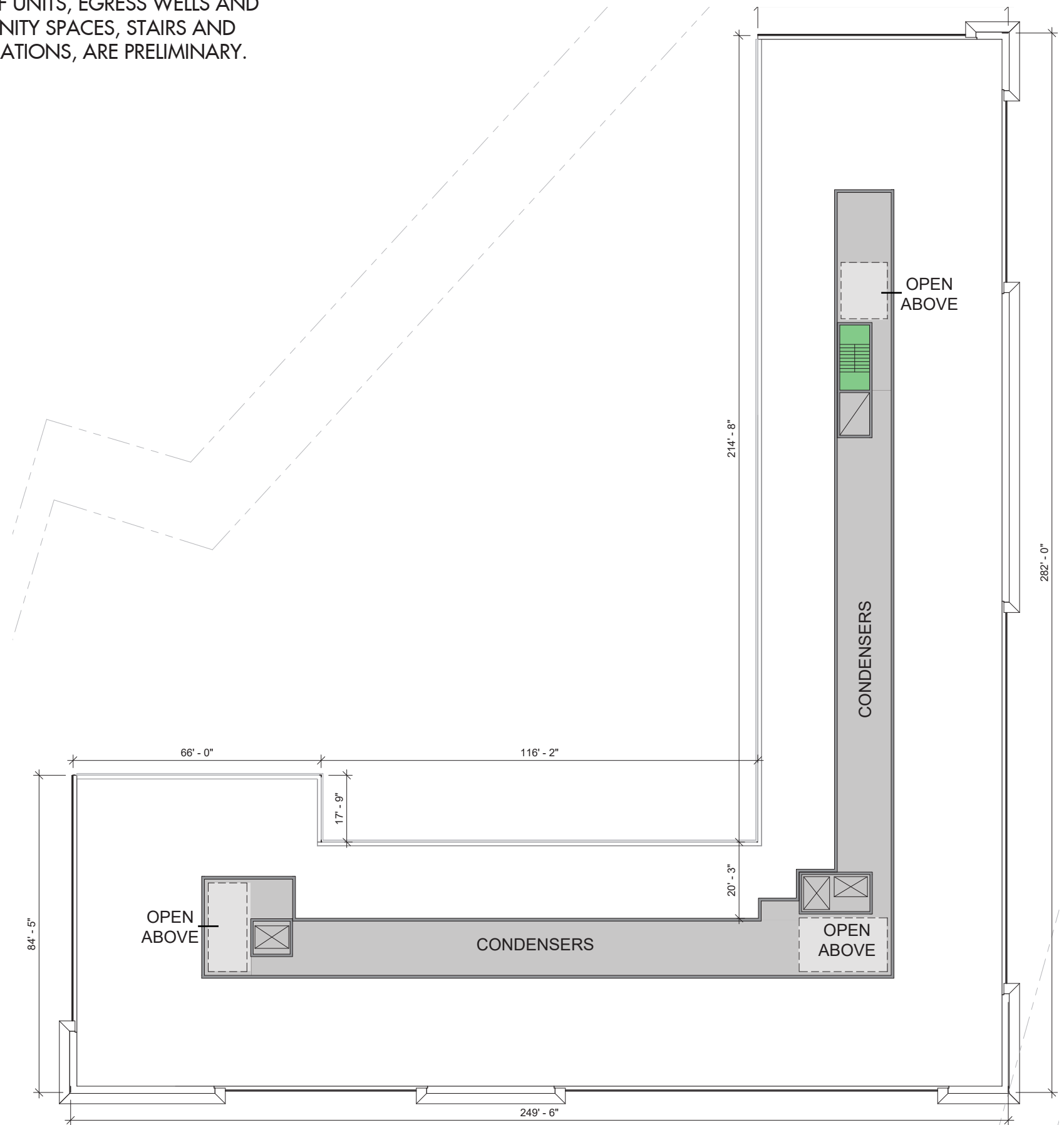
LEVEL 4 PLAN



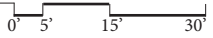
- COMMON / AMENITY
- DWELLING UNITS
- CIRCULATION
- PARKING
- BUILDING SERVICES

SHEET 3-5

NOTE: DEMISING WALLS, QUANTITY AND SIZE OF UNITS, EGRESS WELLS AND RETAINING WALLS, COMMON, UTILITY AND AMENITY SPACES, STAIRS AND ELEVATORS, PARKING AND LOADING CONFIGURATIONS, ARE PRELIMINARY. FINAL LAYOUTS MAY VARY.



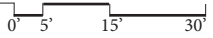
- COMMON / AMENITY
- DWELLING UNITS
- CIRCULATION
- PARKING
- BUILDING SERVICES



EAST ELEVATION



SOUTH ELEVATION



WEST ELEVATION



NORTH ELEVATION

CORNICE AND EXT TRIM
BENJAMIN MOORE
2122-70 SNOW WHITE

AWNING AND COPING
BENJAMIN MOORE
2062-10 POLO BLUE



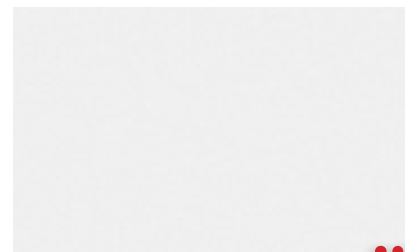
(BACK ELEVATIONS ONLY)
VINYL SIDING FIELD
CERTAINTEED: STERLING GRAY



(BACK ELEVATIONS ONLY)
VINYL SIDING ACCENT
CERTAINTEED: FLAGSTONE



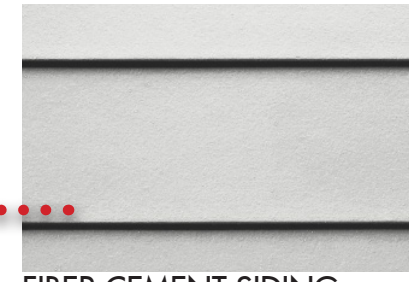
MI WINDOWS
WHITE VINYL 1-OVER 1
WINDOWS AND TRIM



ALUMINUM STOREFRONT AND
COPING - WHITE



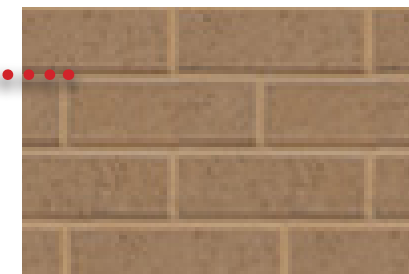
FOUNDATION VENEER
YORK SPLITFACE CMU "COCOA"



FIBER CEMENT SIDING
JAMES HARDIE: ARCTIC WHITE



ACCENT BRICK VENEER
PALMETTO BRICK: CHOCOLATE WIRE CUT
WITH COCOA MORTAR

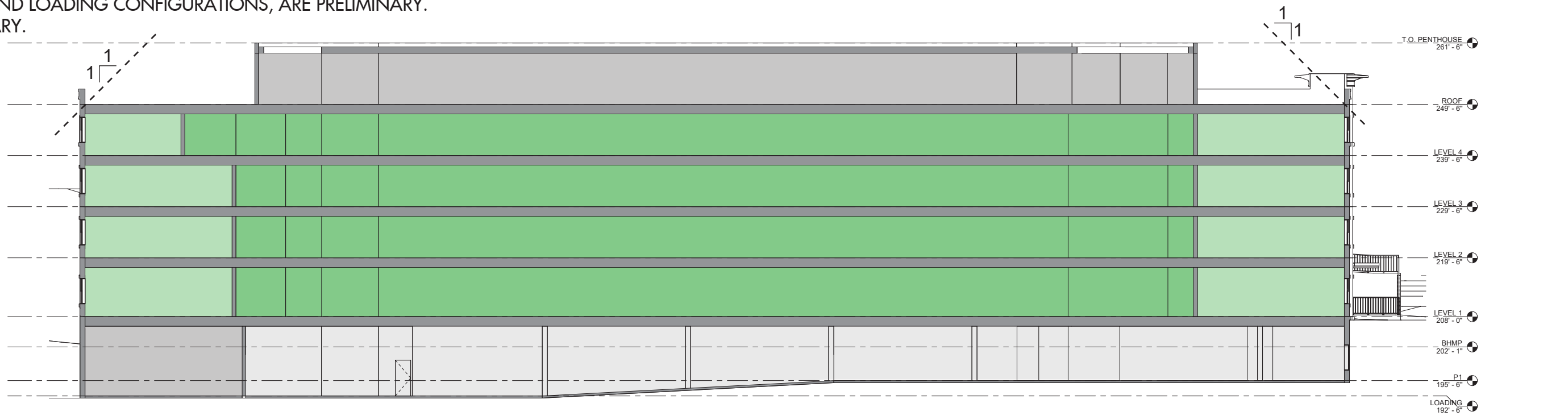
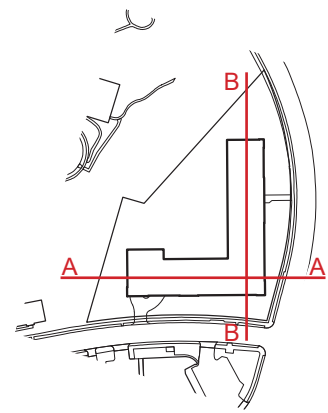


FIELD BRICK VENEER
PALMETTO BRICK: .25 GREYSTONE
WITH BISQUE MORTAR

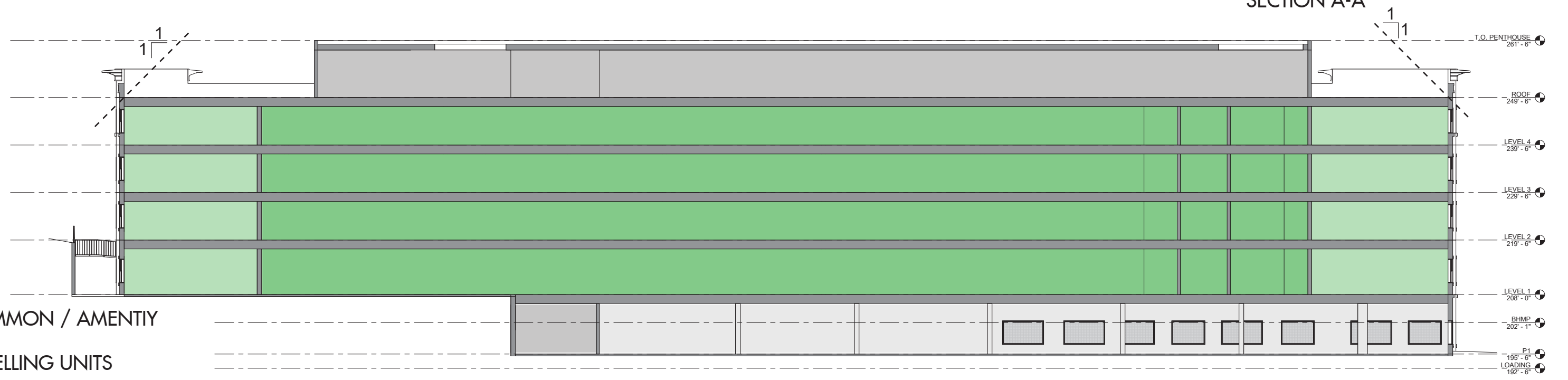
NOTE: DEMISING WALLS, QUANTITY AND SIZE OF UNITS, EGRESS WELLS AND RETAINING WALLS, COMMON, UTILITY AND AMENITY SPACES, STAIRS AND ELEVATORS, PARKING AND LOADING CONFIGURATIONS, ARE PRELIMINARY. FINAL LAYOUTS MAY VARY.

BUILDING SECTIONS

0' 5' 15' 30'



SECTION A-A

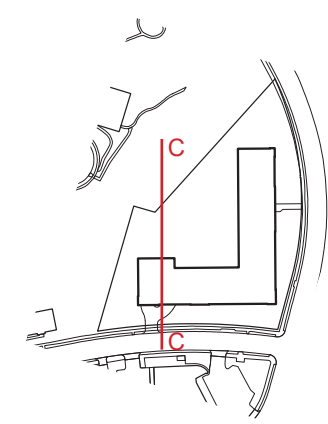
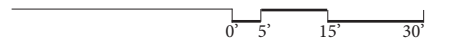


SECTION B-B

- COMMON / AMENITY
- DWELLING UNITS
- CIRCULATION
- PARKING
- BUILDING SERVICES

NOTE: DEMISING WALLS, QUANTITY AND SIZE OF UNITS, EGRESS WELLS AND RETAINING WALLS, COMMON, UTILITY AND AMENITY SPACES, STAIRS AND ELEVATORS, PARKING AND LOADING CONFIGURATIONS, ARE PRELIMINARY. FINAL LAYOUTS MAY VARY.

BUILDING SECTIONS



- COMMON / AMENITY
- DWELLING UNITS
- CIRCULATION
- PARKING
- BUILDING SERVICES

SHEET 3-11



LEEDv4 Homes and Multifamily Lowrise Project Scorecard

Terrace Manor



Integrative Process Preliminary Y 2 of 2 M 0 Verified

IPc	Integrative Process	2 of 2	0
-----	---------------------	--------	---



Location and Transportation Preliminary Y 14 of 15 M 1 Verified

LTP	Floodplain Avoidance	Required	
LTc	LEED for Neighborhood Development	0 of 15	0
LTc	Site Selection	7 of 8	1
LTc	Compact Development	3 of 3	0
LTc	Community Resources	2 of 2	0
LTc	Access to Transit	2 of 2	0



Sustainable Sites Preliminary Y 5 of 7 M 2.5 Verified

SSp	Construction Activity Pollution Prevention	Required	
SSp	No Invasive Plants	Required	
SSc	Heat Island Reduction	2 of 2	0
SSc	Rainwater Management	1 of 3	1
SSc	Nontoxic Pest Control	2 of 2	1.5



Water Efficiency Preliminary Y 6 of 12 M 3 Verified

WEp	Water Metering	Required	
WEc	Total Water Use	6 of 12	3
WEc	Indoor Water Use	0 of 6	0
WEc	Outdoor Water Use	0 of 4	0



Energy and Atmosphere Preliminary Y 21 of 38 M 6 Verified

EAp	Minimum Energy Performance	Required	
EAp	Energy Metering	Required	
EAp	Education of the Homeowner, Tenant or Building Manager	Required	
EAc	Annual Energy Use	17 of 29	5
EAc	Efficient Hot Water Distribution System	2 of 5	0
EAc	Advanced Utility Tracking	1 of 2	1
EAc	Active Solar-Ready Design	1 of 1	0
EAc	HVAC Start-Up Credentialing	0 of 1	0



Materials and Resources Preliminary Y 4 of 10 M 2 Verified

MRp	Certified Tropical Wood	Required	
MRp	Durability Management	Required	
MRc	Durability Management Verification	1 of 1	0
MRc	Environmentally Preferable Products	0 of 4	2
MRc	Construction Waste Management	2 of 3	0
MRc	Material-Efficient Framing	1 of 2	0

Indoor Environmental Quality Preliminary Y 8 of 16 M 2 Verified

EQp	Ventilation	Required	
EQp	Combustion Venting	Required	
EQp	Garage Pollutant Protection	Required	
EQp	Radon-Resistant Construction	Required	
EQp	Air Filtering	Required	
EQp	Environmental Tobacco Smoke	Required	
EQp	Compartmentalization	Required	
EQc	Enhanced Ventilation	1 of 3	0
EQc	Contaminant Control	0.5 of 2	0.5
EQc	Balancing of Heating and Cooling Distribution Systems	3 of 3	0
EQc	Enhanced Compartmentalization	0 of 1	0
EQc	Combustion Venting	2 of 2	0
EQc	Enhanced Garage Pollutant Protection	1 of 2	0
EQc	Low-Emitting Products	0.5 of 3	1.5
EQc	No Environmental Tobacco Smoke	0 of 0	0



Innovation Preliminary Y 4.5 of 6 M 1.5 Verified

INp	Preliminary Rating	Required	
INc	Innovation	3.5 of 5	1.5
INc	LEED Accredited Professional	1 of 1	0



Regional Priority Preliminary Y 3 of 4 M 0 Verified

RPC	Regional Priority	3 of 4	0
-----	-------------------	--------	---

Point Floors

The project earned at least 8 points total in Location and Transportation and Energy and Atmosphere	<input type="text" value="No"/>
The project earned at least 3 points in Water Efficiency	<input type="text" value="No"/>
The project earned at least 3 points in Indoor Environmental Quality	<input type="text" value="No"/>

Total Preliminary Y 67.5 of 110 M 18 Verified

Certification Thresholds Certified: 40-49, Silver: 50-59, Gold: 60-79, Platinum: 80-110