

1 VDR - OVERALL AXONOMETRIC - NORTHWEST

**PICKARD CHILTON**

**2100 M STREET NW**  
 2100 M St. NW  
 Washington, D.C. 20037

**Owner**  
**BXP**  
 2200 Pennsylvania Ave NW  
 Washington, DC 20037  
 tel. 202.595.0800  
 www.bxp.com

**Design Consultant**  
**Pickard Chilton**  
 980 Chapel Street  
 New Haven, Connecticut 06510  
 tel. 203.786-8600  
 www.pickarchilton.com

**Architect of Record**  
**Kendall/Heaton Associates**  
 3050 Post Oak Boulevard, Suite 1000  
 Houston, Texas 77002  
 tel. 713.877.1192  
 www.kendall-heaton.com

**Landscape Architect**  
**ParkerRodriguez**  
 211 N Union Street, Suite 320  
 Alexandria, Virginia 22314  
 tel. 703.548.5010  
 www.parkerrodriguez.com

**Structural Engineer**  
**Thornton Tomasetti**  
 1330 Connecticut Avenue NW, Suite 300  
 Washington, D.C. 20036  
 tel. 202.590.6300  
 www.thorntontomasetti.com

**Mechanical and Electrical Engineer**  
**GHT**  
 1110 North Glebe Road, Suite 300  
 Arlington, Virginia 22201  
 tel. 703.243.1200  
 www.ghtid.com

**Civil Engineer**  
**Wiles Mensch**  
 100 M Street, SE #320  
 Washington, D.C. 20003  
 tel. 202-638-4040  
 www.wm-dc.com

**Transportation Consultant**  
**Wells + Associates**  
 650 Massachusetts Avenue NW, Suite 600  
 Washington, D.C. 20001  
 tel. 202.978.5222  
 www.wellsandassociates.com

**Vertical Transportation**  
**VDA**  
 120 Eagle Rock Avenue, Suite 310  
 East Hanover, New Jersey 07936  
 tel. 973.994.9220  
 www.vdassoc.com

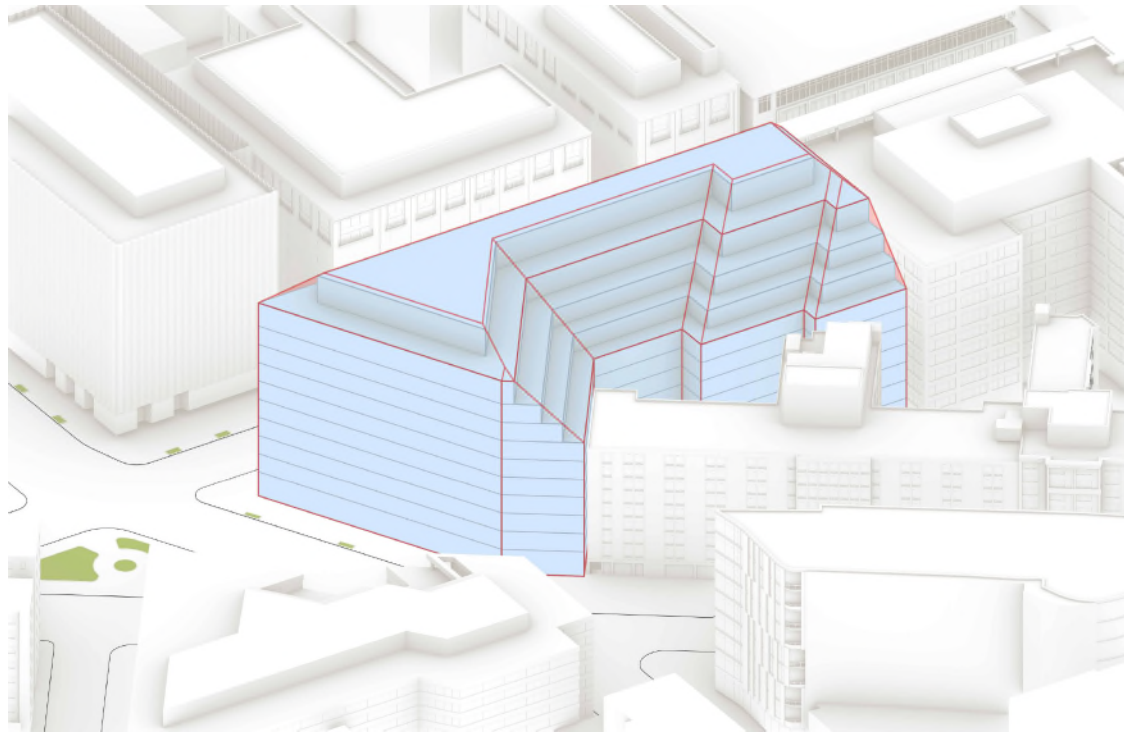
**REVISIONS**

**Schematic Design**  
 This drawing is not for construction or bidding purposes. Pickard Chilton Architects, Inc. has prepared this drawing solely to communicate architectural design intent. Pickard Chilton Architects, Inc. is not the Architect of Record and therefore is not responsible for preparing construction documents or for technical, legal, or construction-related matters. Pickard Chilton Architects, Inc. is not responsible for nor does it make any representation concerning dimensional accuracy of this drawing or coordination of this drawing with documents prepared by other disciplines.

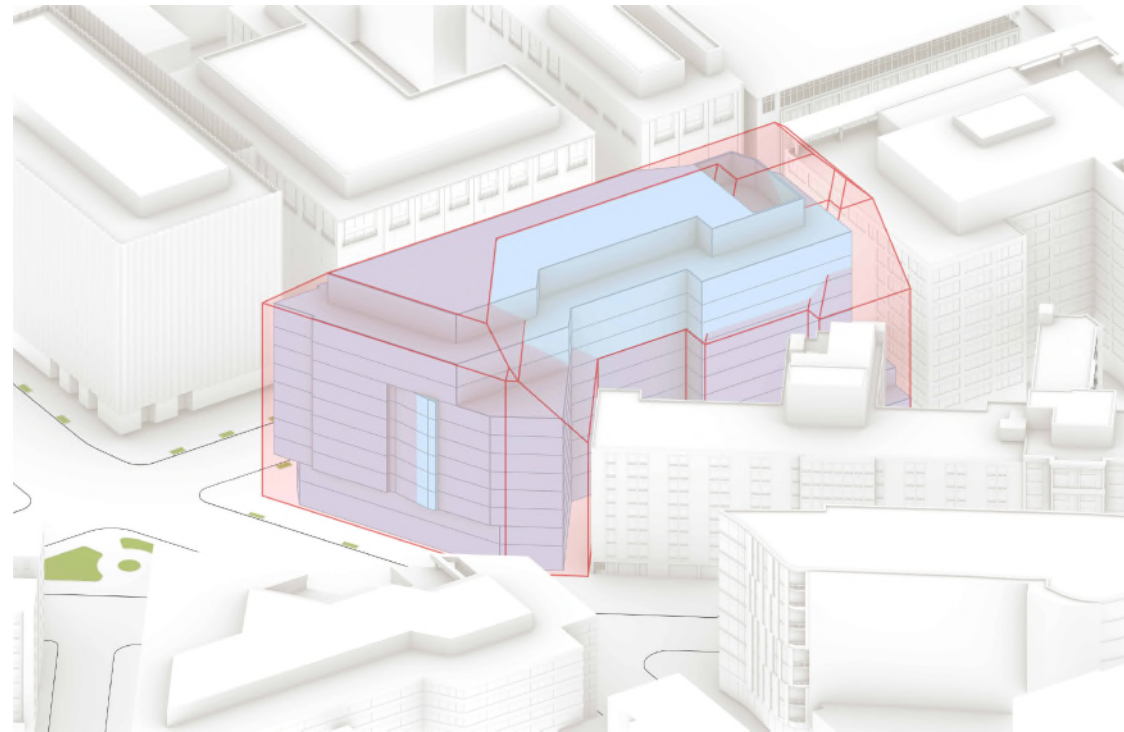
**NOT FOR CONSTRUCTION**

**OVERALL AXONOMETRIC - NORTHWEST**

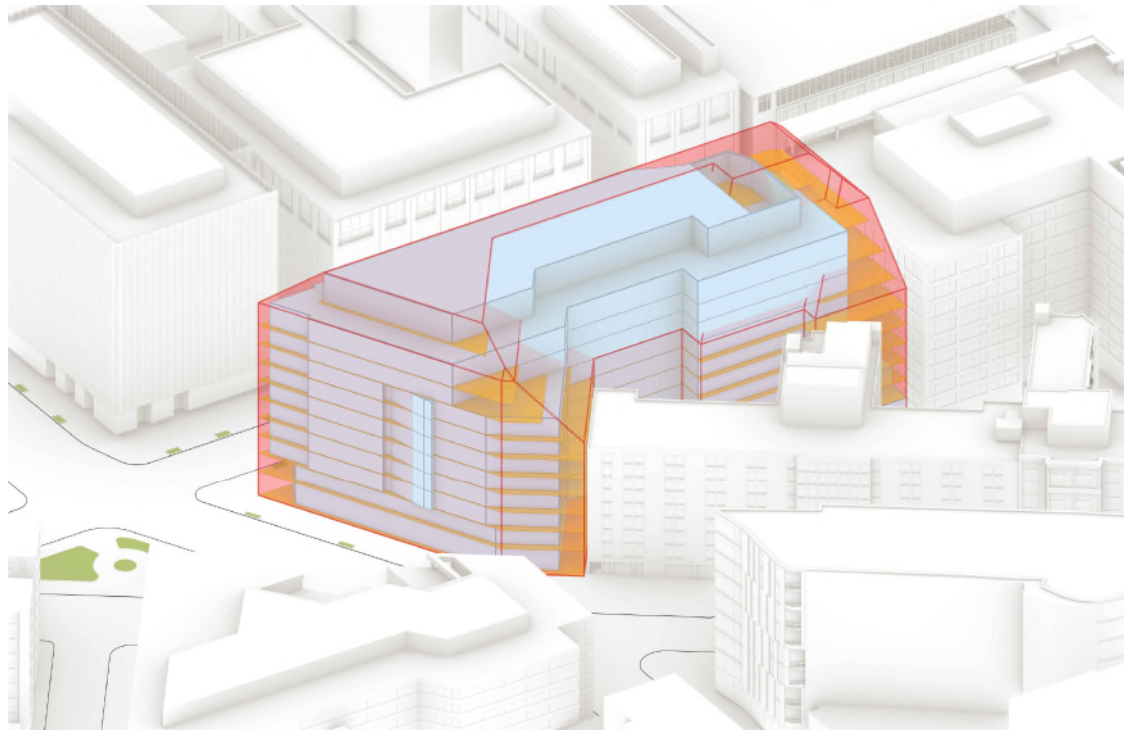
PROJECT: 2530  
 DATE: May 2026  
 SCALE:  
 SHEET NUMBER:  
**ZONING COMMISSION**  
**District of Columbia**  
**CASE NO. 26-05**  
**EXHIBIT NO. 3E4**  
**VDR A4.04**  
 Copyright 2026 by Pickard Chilton Architects, Inc. All rights reserved.



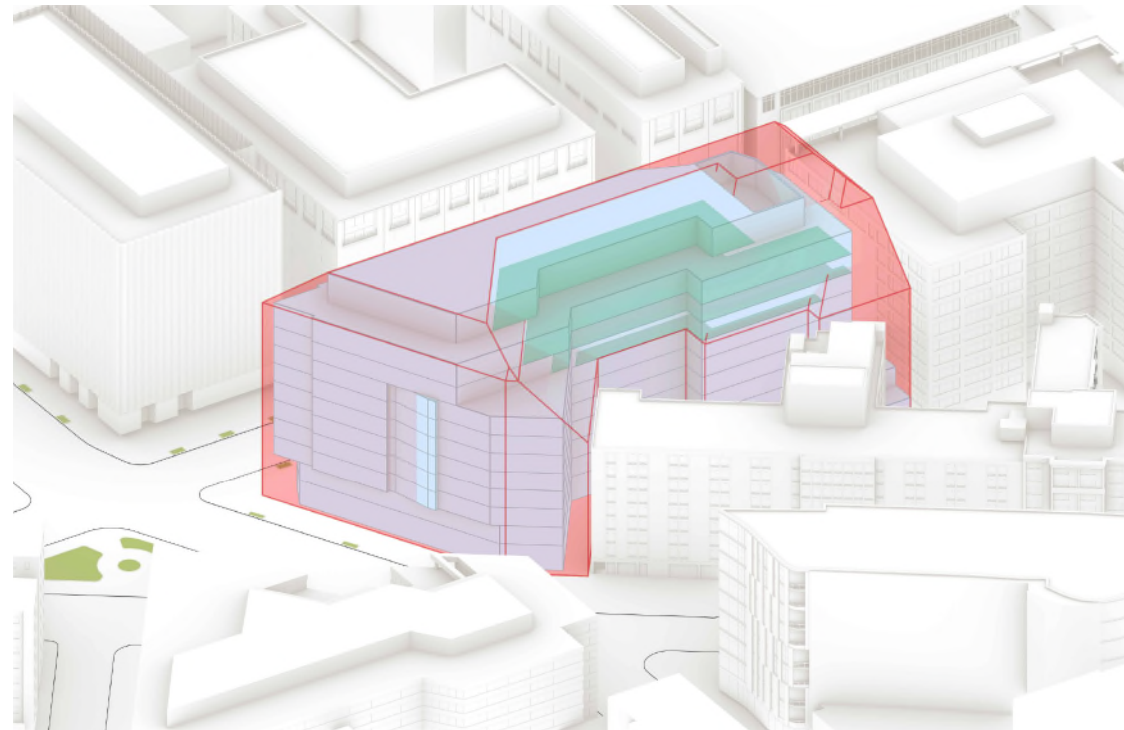
AS OF RIGHT BUILDING ENVELOPE



CONCEPTUAL MASSING OVERLAY ON AS OF RIGHT BUILDING ENVELOPE



CONCEPTUAL MASSING: AREA CARVED FROM AS OF RIGHT BUILDING ENVELOPE



CONCEPTUAL MASSING: AREA ADDED BEYOND AS OF RIGHT ENVELOPE

PICKARD CHILTON

2100 M STREET NW  
2100 M St. NW  
Washington, D.C. 20037

Owner  
**BXP**  
2200 Pennsylvania Ave NW  
Washington, DC 20037  
tel. 202.595.0800  
www.bxp.com

Design Consultant  
**Pickard Chilton**  
969 Chapel Street  
New Haven, Connecticut 06510  
tel. 203.786-8600  
www.pickarchilton.com

Architect of Record  
**Kendall/Heaton Associates**  
3050 Post Oak Boulevard, Suite 1000  
Houston, Texas 77002  
tel. 713.877.1192  
www.kendall-heaton.com

Landscape Architect  
**ParkerRodriguez**  
211 N Union Street, Suite 320  
Alexandria, Virginia 22314  
tel. 703.548.5010  
www.parkerrodriguez.com

Structural Engineer  
**Thornton Tomasetti**  
1330 Connecticut Avenue NW, Suite 300  
Washington, D.C. 20036  
tel. 202.560.6300  
www.thorntontomasetti.com

Mechanical and Electrical Engineer  
**GHT**  
1110 North Glebe Road, Suite 300  
Arlington, Virginia 22201  
tel. 703.243.1200  
www.ghitd.com

Civil Engineer  
**Wiles Mensch**  
100 M Street SE, #320  
Washington, D.C. 20003  
tel. 202.638-4040  
www.wm-dc.com

Transportation Consultant  
**Wells + Associates**  
650 Massachusetts Avenue NW, Suite 600  
Washington, D.C. 20001  
tel. 202.978.5222  
www.wellsandassociates.com

Vertical Transportation  
**VDA**  
120 Eagle Rock Avenue, Suite 310  
East Hanover, New Jersey 07936  
tel. 973.994.9220  
www.vdassoc.com

REVISIONS

Schematic Design

This drawing is not for construction or bidding purposes. Pickard Chilton Architects, Inc. has prepared this drawing solely to communicate architectural design intent. Pickard Chilton Architects, Inc. is not the Architect of Record and therefore is not responsible for preparing construction documents or for technical, legal, or construction-related matters. Pickard Chilton Architects, Inc. is not responsible for nor does it make any representation concerning dimensional accuracy of this drawing or coordination of this drawing with documents prepared by other disciplines.

NOT FOR CONSTRUCTION

ZONING SETBACK DIAGRAM - AS OF RIGHT

PROJECT: 2530  
DATE: May 2026  
SCALE:

SHEET NUMBER:

VDR A4.05

Copyright 2026 by Pickard Chilton Architects, Inc. All rights reserved.

2100 M STREET NW  
2100 M St. NW  
Washington, D.C. 20037

Owner  
**BXP**  
2200 Pennsylvania Ave NW  
Washington, DC 20037  
tel. 202.595.0800  
www.bxp.com

Design Consultant  
**Pickard Chilton**  
985 Chapel Street  
New Haven, Connecticut 06510  
tel. 203.786.8600  
www.pickarchilton.com

Architect of Record  
**Kendall/Heaton Associates**  
3050 Post Oak Boulevard, Suite 1000  
Houston, Texas 77002  
tel. 713.877.1192  
www.kendall-heaton.com

Landscape Architect  
**ParkerRodriguez**  
211 N Union Street, Suite 320  
Alexandria, Virginia 22314  
tel. 703.548.5010  
www.parkerrodriguez.com

Structural Engineer  
**Thornton Tomasetti**  
1330 Connecticut Avenue NW, Suite 300  
Washington, D.C. 20036  
tel. 202.580.6300  
www.thorntontomasetti.com

Mechanical and Electrical Engineer  
**GHT**  
1110 North Glebe Road, Suite 300  
Arlington, Virginia 22201  
tel. 703.243.1200  
www.ghitd.com

Civil Engineer  
**Wiles Mensch**  
100 M Street SE #200  
Washington, D.C. 20003  
tel. 202.638.4040  
www.wm-dc.com

Transportation Consultant  
**Wells + Associates**  
650 Massachusetts Avenue NW, Suite 600  
Washington, D.C. 20001  
tel. 202.978.5222  
www.wellsandassociates.com

Vertical Transportation  
**VDA**  
120 Eagle Rock Avenue, Suite 310  
East Hanover, New Jersey 07936  
tel. 973.994.9220  
www.vdassoc.com

REVISIONS

**Schematic Design**  
This drawing is not for construction or bidding purposes. Pickard Chilton Architects, Inc. has prepared this drawing solely to communicate architectural design intent. Pickard Chilton Architects, Inc. is not the Architect of Record and therefore is not responsible for preparing construction documents or for technical, legal, or construction-related matters. Pickard Chilton Architects, Inc. is not responsible for nor does it make any representation concerning dimensional accuracy of this drawing or coordination of this drawing with documents prepared by other disciplines.

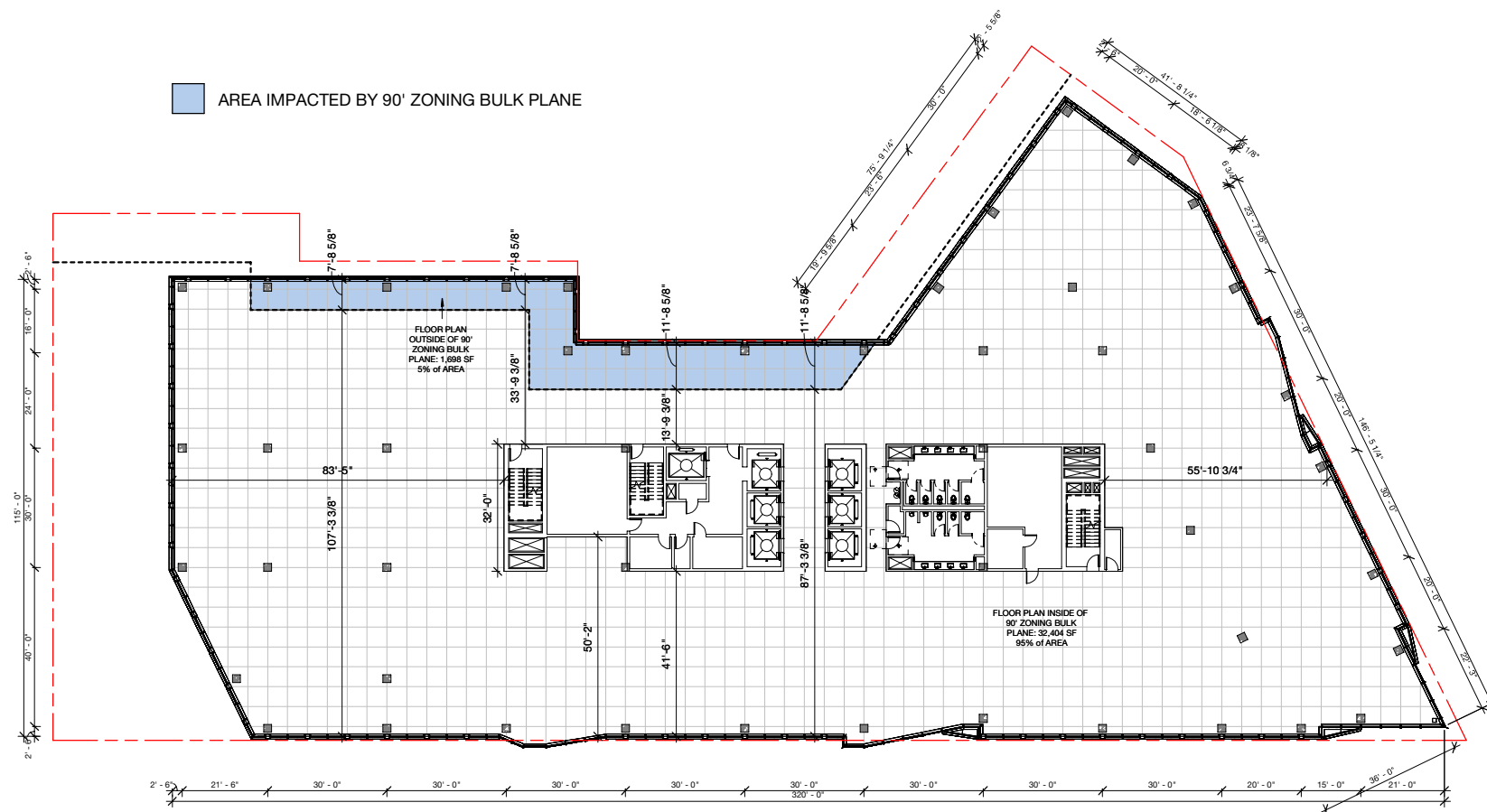
NOT FOR CONSTRUCTION

ZONING SETBACK DIAGRAM - FLOOR PLAN IMPACT

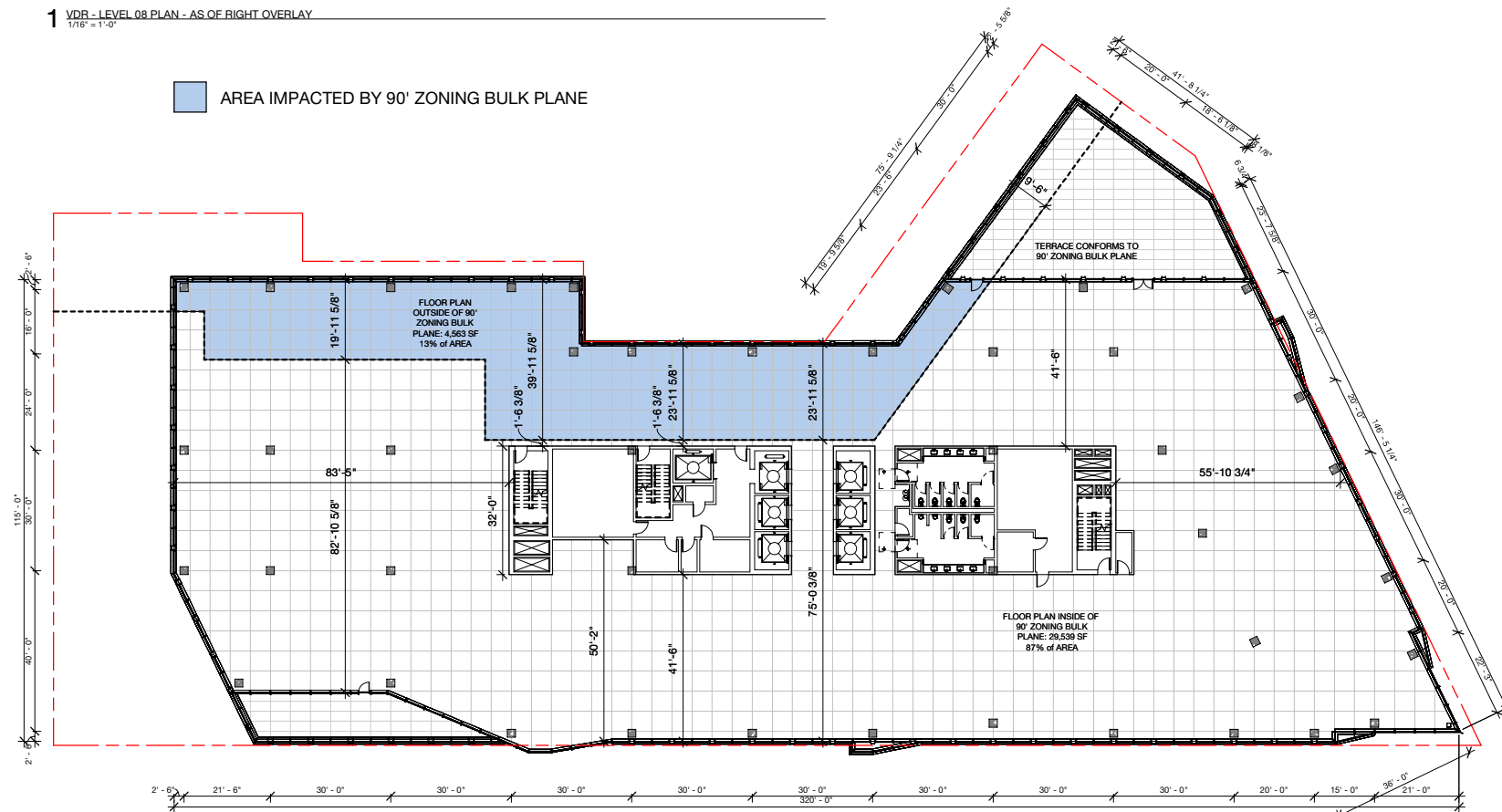
PROJECT: 2530  
DATE: May 2026  
SCALE: 1/16" = 1'-0"

SHEET NUMBER:  
**VDR A4.06**

Copyright 2026 by Pickard Chilton Architects, Inc. All rights reserved.



1 VDR - LEVEL 08 PLAN - AS OF RIGHT OVERLAY  
1/16" = 1'-0"



2 VDR - LEVEL 09 PLAN - AS OF RIGHT OVERLAY  
1/16" = 1'-0"

2100 M STREET NW  
2100 M St. NW  
Washington, D.C. 20037

Owner  
**BXP**  
2200 Pennsylvania Ave NW  
Washington, DC 20037  
tel. 202.595.0800  
www.bxp.com

Design Consultant  
**Pickard Chilton**  
989 Chapel Street  
New Haven, Connecticut 06510  
tel. 203.786-8600  
www.pickarchilton.com

Architect of Record  
**Kendall/Heaton Associates**  
3050 Post Oak Boulevard, Suite 1000  
Houston, Texas 77002  
tel. 713.877.1192  
www.kendall-heaton.com

Landscape Architect  
**ParkerRodriguez**  
211 N Union Street, Suite 320  
Alexandria, Virginia 22314  
tel. 703.548.5010  
www.parkerrodriguez.com

Structural Engineer  
**Thornton Tomasetti**  
1330 Connecticut Avenue NW, Suite 300  
Washington, D.C. 20036  
tel. 202.580.6300  
www.thorntontomasetti.com

Mechanical and Electrical Engineer  
**GHT**  
1110 North Glebe Road, Suite 300  
Arlington, Virginia 22201  
tel. 703.243.1200  
www.ghtid.com

Civil Engineer  
**Wiles Mensch**  
100 M Street SE #200  
Washington, D.C. 20003  
tel. 202.638-4040  
www.wm-dc.com

Transportation Consultant  
**Wells + Associates**  
650 Massachusetts Avenue NW, Suite 600  
Washington, D.C. 20001  
tel. 202.978.5222  
www.wellsandassociates.com

Vertical Transportation  
**VDA**  
120 Eagle Rock Avenue, Suite 310  
East Hanover, New Jersey 07936  
tel. 973.994.9220  
www.vdassoc.com

REVISIONS

Schematic Design

This drawing is not for construction or bidding purposes. Pickard Chilton Architects, Inc. has prepared this drawing solely to communicate architectural design intent. Pickard Chilton Architects, Inc. is not the Architect of Record and therefore is not responsible for preparing construction documents or for technical, legal, or construction-related matters. Pickard Chilton Architects, Inc. is not responsible for nor does it make any representation concerning dimensional accuracy of this drawing or coordination of this drawing with documents prepared by other disciplines.

NOT FOR CONSTRUCTION

ZONING SETBACK DIAGRAM - FLOOR PLAN IMPACT

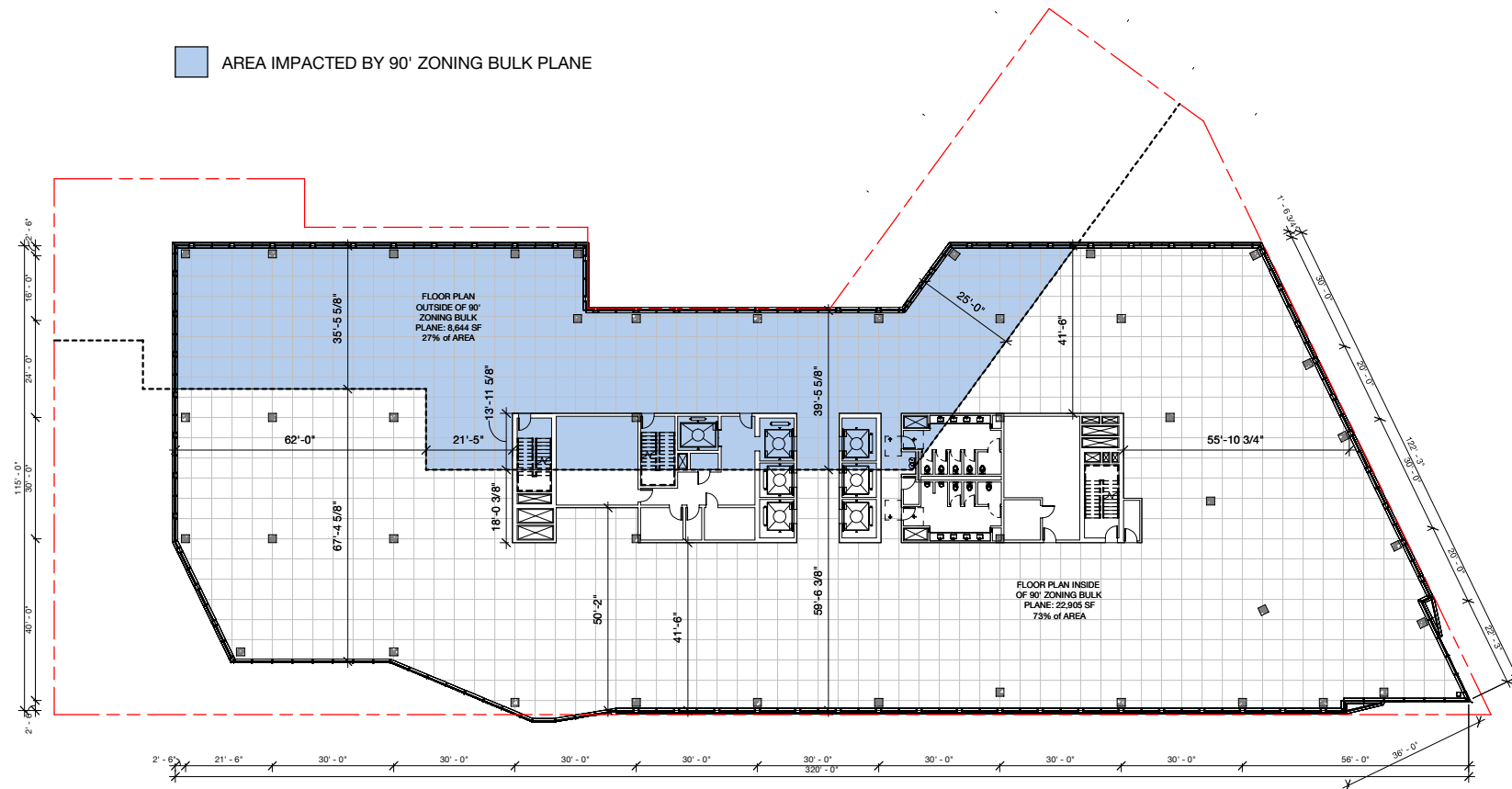
PROJECT: 2530  
DATE: May 2026  
SCALE: 1/16" = 1'-0"

SHEET NUMBER:

VDR A4.07

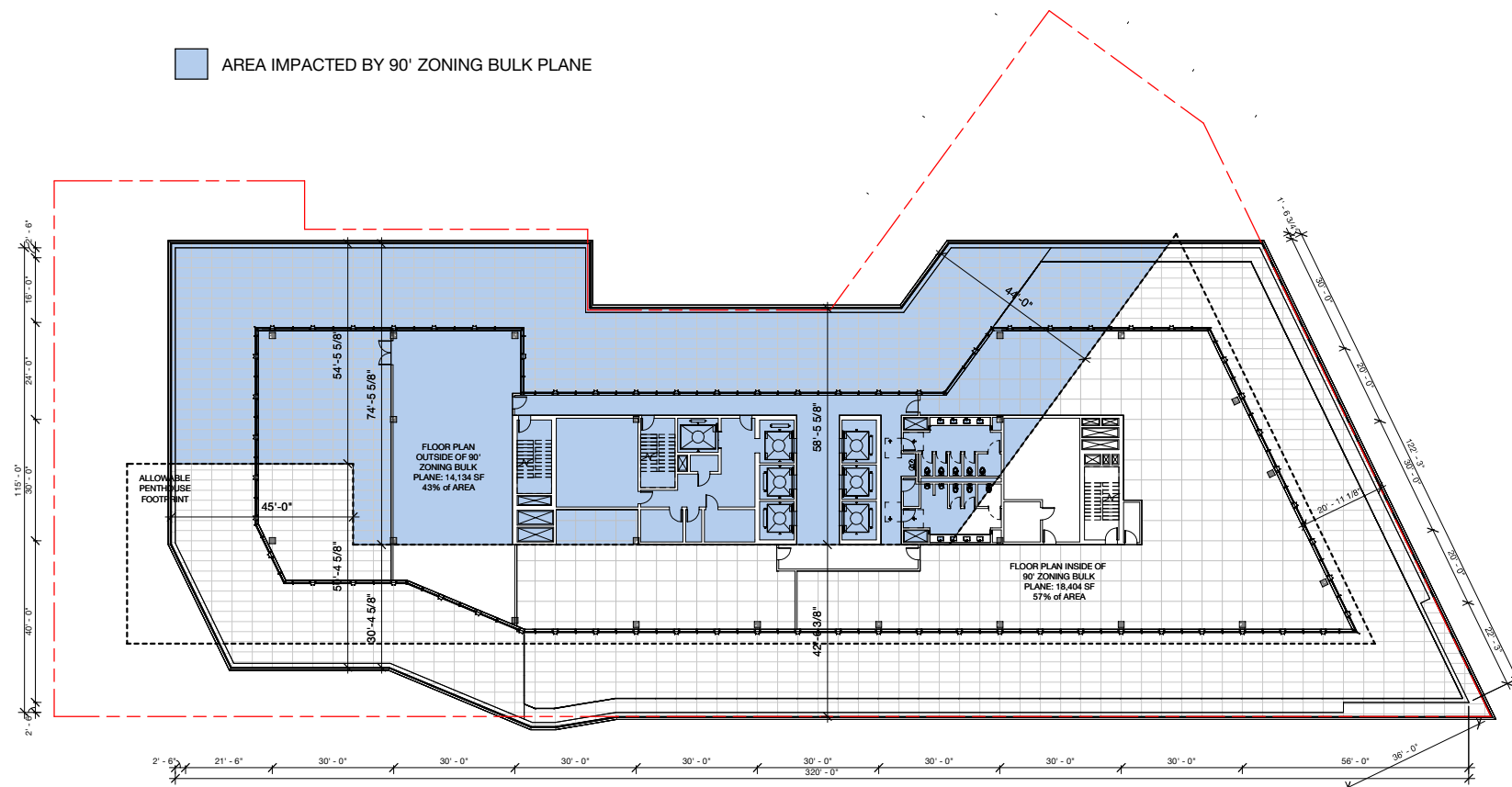
Copyright 2026 by Pickard Chilton Architects, Inc. All rights reserved.

AREA IMPACTED BY 90' ZONING BULK PLANE



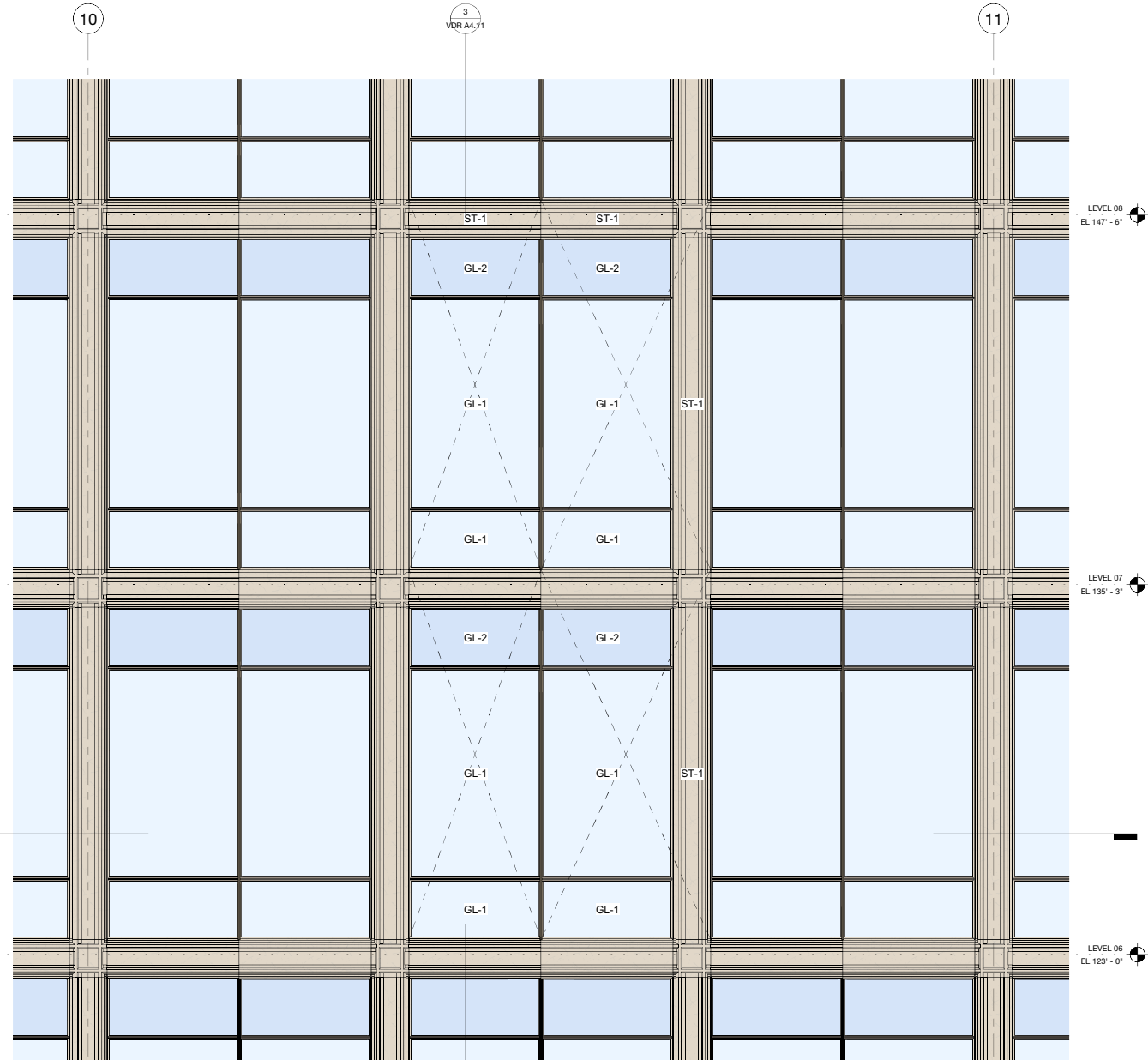
1 VDR - LEVEL 10 PLAN - AS OF RIGHT OVERLAY  
1/16" = 1'-0"

AREA IMPACTED BY 90' ZONING BULK PLANE

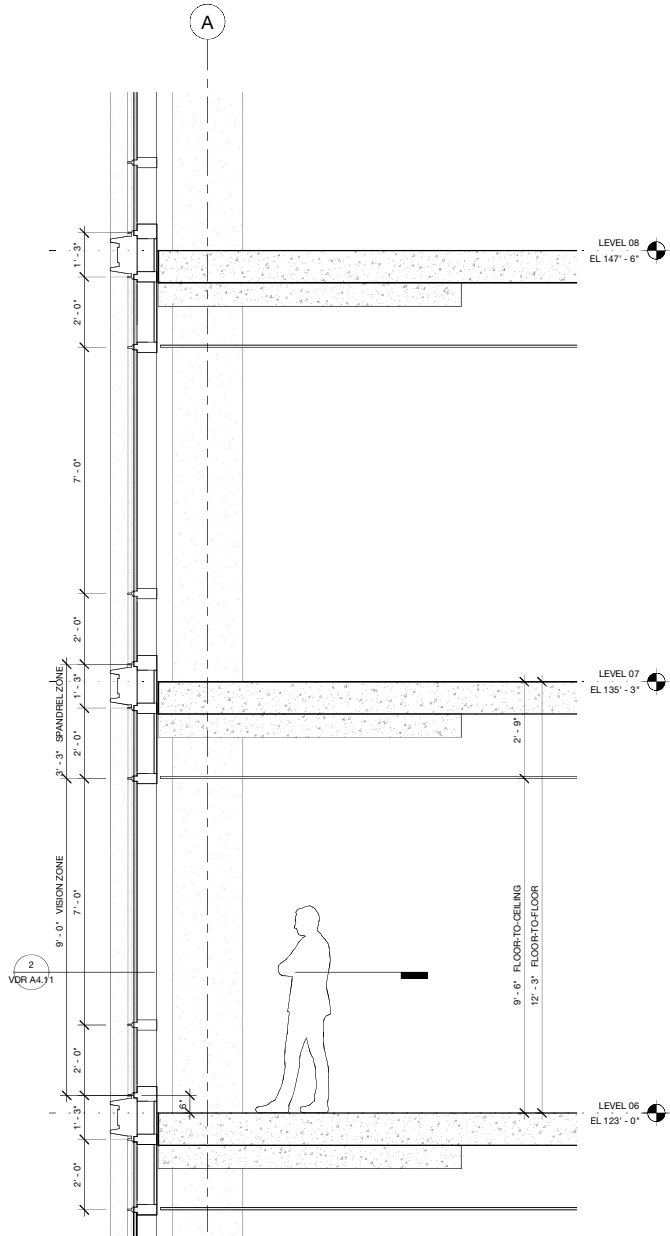


2 VDR - LEVEL 11 (PENTHOUSE) PLAN - AS OF RIGHT OVERLAY  
1/16" = 1'-0"

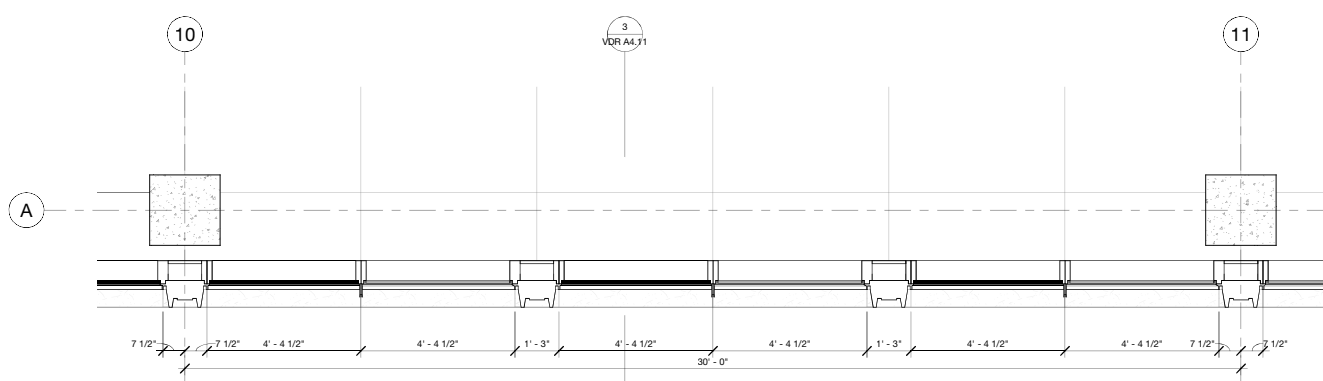




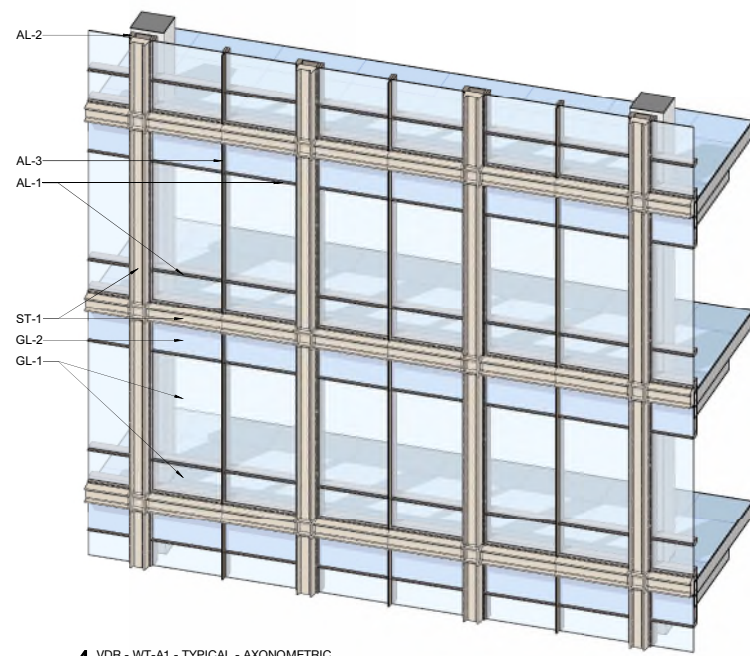
1 VDR - WT-A1 - TYPICAL - ELEVATION  
1/2" = 1'-0"



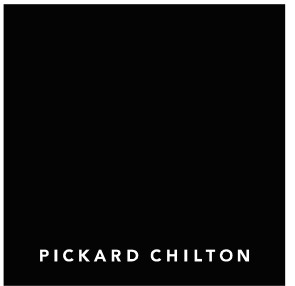
3 VDR - WT-A1 - TYPICAL - SECTION  
1/2" = 1'-0"



2 VDR - WT-A1 - TYPICAL - PLAN  
1/2" = 1'-0"



4 VDR - WT-A1 - TYPICAL - AXONOMETRIC



2100 M STREET NW  
2100 M St. NW  
Washington, D.C. 20037

Owner  
**BXP**  
2200 Pennsylvania Ave NW  
Washington, DC 20037  
tel. 202.595.0800  
www.bxp.com

Design Consultant  
**Pickard Chilton**  
969 Chapel Street  
New Haven, Connecticut 06510  
tel. 203.786-8600  
www.pickardchilton.com

Architect of Record  
**Kendall/Heaton Associates**  
3050 Post Oak Boulevard, Suite 1000  
Houston, Texas 77002  
tel. 713.877.1192  
www.kendall-heaton.com

Landscape Architect  
**ParkerRodriguez**  
211 N Union Street, Suite 320  
Alexandria, Virginia 22314  
tel. 703.548.5010  
www.parkerrodriguez.com

Structural Engineer  
**Thornton Tomasetti**  
1330 Connecticut Avenue NW, Suite 300  
Washington, D.C. 20036  
tel. 202.580.6300  
www.thorntontomasetti.com

Mechanical and Electrical Engineer  
**GHT**  
1110 North Glebe Road, Suite 300  
Arlington, Virginia 22201  
tel. 703.243.1200  
www.ghtid.com

Civil Engineer  
**Wiles Mensch**  
100 M Street, SE #200  
Washington, D.C. 20003  
tel. 202.638.4040  
www.wm-dc.com

Transportation Consultant  
**Wells + Associates**  
650 Massachusetts Avenue NW, Suite 600  
Washington, D.C. 20001  
tel. 202.978.5222  
www.wellsandassociates.com

Vertical Transportation  
**VDA**  
120 Eagle Rock Avenue, Suite 310  
East Hanover, New Jersey 07936  
tel. 973.994.9220  
www.vdassoc.com

REVISIONS

Schematic Design  
This drawing is not for construction or bidding purposes. Pickard Chilton Architects, Inc. has prepared this drawing solely to communicate architectural design intent. Pickard Chilton Architects, Inc. is not the Architect of Record and therefore is not responsible for preparing construction documents or for technical, legal, or construction-related matters. Pickard Chilton Architects, Inc. is not responsible for nor does it make any representation concerning dimensional accuracy of this drawing or coordination of this drawing with documents prepared by other disciplines.

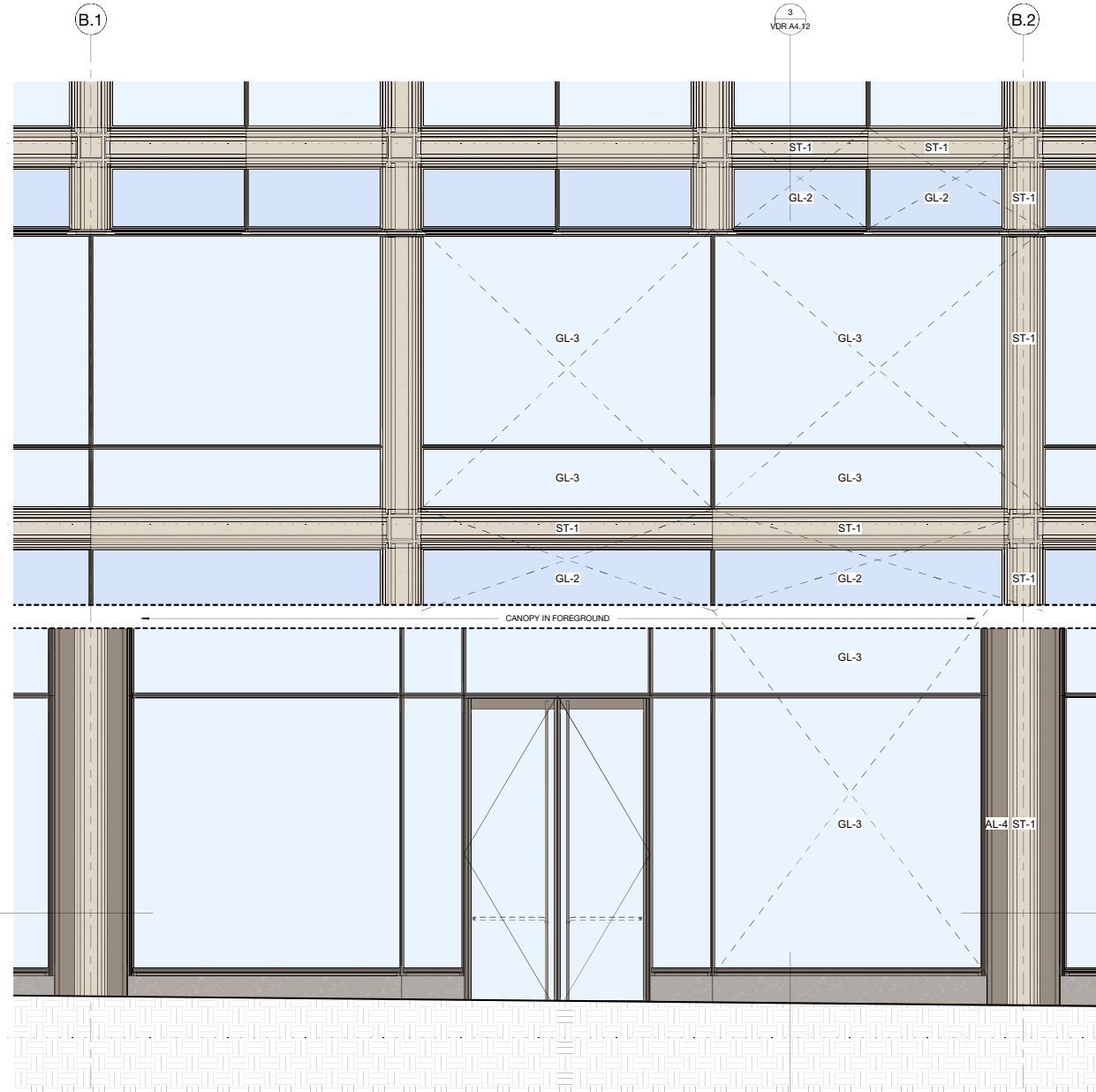
NOT FOR CONSTRUCTION

WT-A1 - TYPICAL

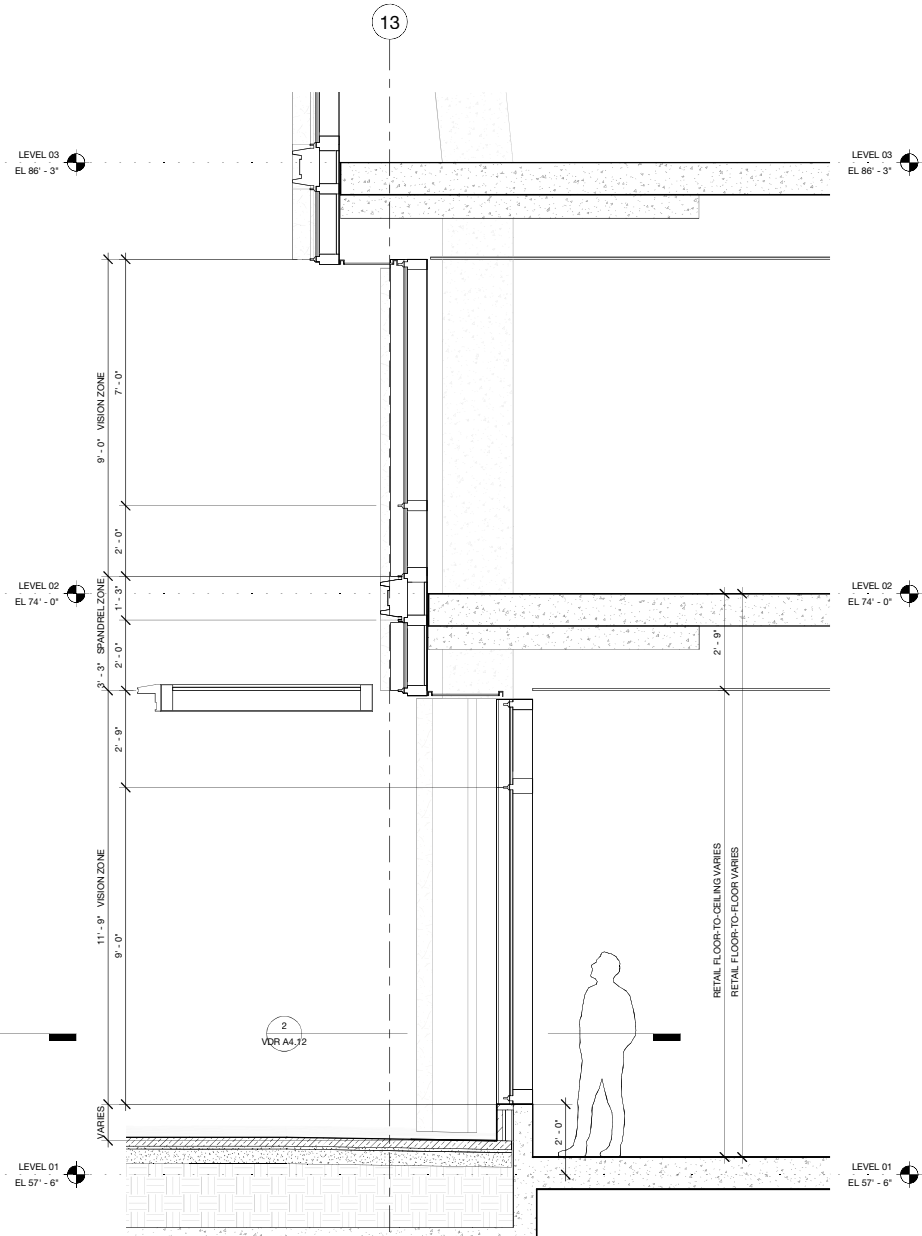
PROJECT: 2530  
DATE: May 2025  
SCALE: 1/2" = 1'-0"

SHEET NUMBER:  
**VDR A4.11**

Copyright 2025 by Pickard Chilton Architects, Inc. All rights reserved.



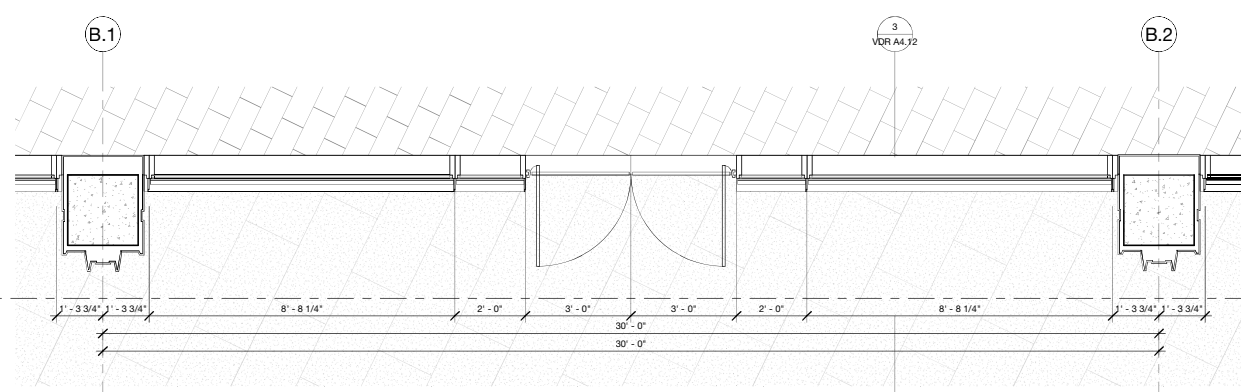
1 VDR - WT-B2 - GROUND (RETAIL) - ELEVATION  
1/2" = 1'-0"



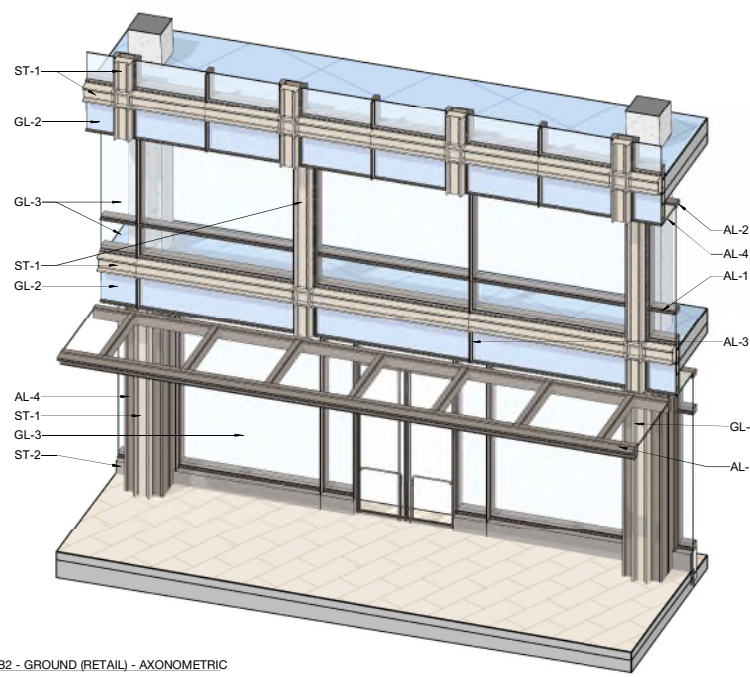
3 VDR - WT-B2 - GROUND (RETAIL) - SECTION  
1/2" = 1'-0"

2  
VDR A4.12

2  
VDR A4.12



2 VDR - WT-B2 - GROUND (RETAIL) - PLAN  
1/2" = 1'-0"



4 VDR - WT-B2 - GROUND (RETAIL) - AXONOMETRIC

PICKARD CHILTON

2100 M STREET NW  
2100 M St. NW  
Washington, D.C. 20037

Owner  
**BXP**  
2200 Pennsylvania Ave NW  
Washington, DC 20037  
tel. 202.595.0800  
www.bxp.com

Design Consultant  
**Pickard Chilton**  
985 Chapel Street  
New Haven, Connecticut 06510  
tel. 203.786-8600  
www.pickarchilton.com

Architect of Record  
**Kendall/Heaton Associates**  
3050 Post Oak Boulevard, Suite 1000  
Houston, Texas 77002  
tel. 713.877.1192  
www.kendall-heaton.com

Landscape Architect  
**ParkerRodriguez**  
211 N Union Street, Suite 320  
Alexandria, Virginia 22314  
tel. 703.548.5010  
www.parkerrodriguez.com

Structural Engineer  
**Thornton Tomasetti**  
1330 Connecticut Avenue NW, Suite 300  
Washington, D.C. 20036  
tel. 202.580.6300  
www.thorntontomasetti.com

Mechanical and Electrical Engineer  
**GHT**  
1110 North Glebe Road, Suite 300  
Arlington, Virginia 22201  
tel. 703.243.1200  
www.ghtid.com

Civil Engineer  
**Wiles Mensch**  
100 M Street SE #320  
Washington, D.C. 20003  
tel. 202.638-4040  
www.wm-dc.com

Transportation Consultant  
**Wells + Associates**  
650 Massachusetts Avenue NW, Suite 600  
Washington, D.C. 20001  
tel. 202.978.5222  
www.wellsandassociates.com

Vertical Transportation  
**VDA**  
120 Eagle Rock Avenue, Suite 310  
East Hanover, New Jersey 07936  
tel. 973.994.9220  
www.vdassoc.com

REVISIONS

Schematic Design  
This drawing is not for construction or bidding purposes. Pickard Chilton Architects, Inc. has prepared this drawing solely to communicate architectural design intent. Pickard Chilton Architects, Inc. is not the Architect of Record and therefore is not responsible for preparing construction documents or for technical, legal, or construction-related matters. Pickard Chilton Architects, Inc. is not responsible for nor does it make any representation concerning dimensional accuracy of this drawing or coordination of this drawing with documents prepared by other disciplines.

NOT FOR CONSTRUCTION

WT-B2 - GROUND LEVEL

PROJECT: 2530  
DATE: May 2025  
SCALE: 1/2" = 1'-0"

SHEET NUMBER:  
**VDR A4.12**

Copyright 2025 by Pickard Chilton Architects, Inc. All rights reserved.



PICKARD CHILTON

2100 M STREET NW  
2100 M St. NW  
Washington, D.C. 20037

Owner  
**BXP**  
2200 Pennsylvania Ave NW  
Washington, DC 20037  
tel. 202.595.0800  
www.bxp.com

Design Consultant  
**Pickard Chilton**  
360 Chapel Street  
New Haven, Connecticut 06510  
tel. 203.786-8600  
www.pickarchilton.com

Architect of Record  
**Kendall/Heaton Associates**  
3050 Post Oak Boulevard, Suite 1000  
Houston, Texas 77002  
tel. 713.877.1192  
www.kendall-heaton.com

Landscape Architect  
**ParkerRodriguez**  
211 N Union Street, Suite 320  
Alexandria, Virginia 22314  
tel. 703.548.5010  
www.parkerrodriguez.com

Structural Engineer  
**Thornton Tomasetti**  
1330 Connecticut Avenue NW, Suite 300  
Washington, D.C. 20036  
tel. 202.580.6300  
www.thorntontomasetti.com

Mechanical and Electrical Engineer  
**GHT**  
1110 North Glebe Road, Suite 300  
Arlington, Virginia 22201  
tel. 703.243.1200  
www.ghitd.com

Civil Engineer  
**Wiles Mensch**  
100 M Street, SE #320  
Washington, D.C. 20003  
tel. 202.638-4040  
www.wm-dc.com

Transportation Consultant  
**Wells + Associates**  
650 Massachusetts Avenue NW, Suite 600  
Washington, D.C. 20001  
tel. 202.978.5222  
www.wellsandassociates.com

Vertical Transportation  
**VDA**  
120 Eagle Rock Avenue, Suite 310  
East Hanover, New Jersey 07936  
tel. 973.994.9220  
www.vdassoc.com

REVISIONS

Schematic Design  
This drawing is not for construction or bidding purposes. Pickard Chilton Architects, Inc. has prepared this drawing solely to communicate architectural design intent. Pickard Chilton Architects, Inc. is not the Architect of Record and therefore is not responsible for preparing construction documents or for technical, legal, or construction-related matters. Pickard Chilton Architects, Inc. is not responsible for nor does it make any representation concerning dimensional accuracy of this drawing or coordination of this drawing with documents prepared by other disciplines.

NOT FOR CONSTRUCTION

VIEW OF 21ST ST. FACADE

PROJECT: 2530  
DATE: May 2026  
SCALE:

SHEET NUMBER:  
**VDR A9.01**

Copyright 2026 by Pickard Chilton Architects, Inc. All rights reserved.



PICKARD CHILTON

2100 M STREET NW  
2100 M St. NW  
Washington, D.C. 20037

Owner  
**BXP**  
2200 Pennsylvania Ave NW  
Washington, DC 20037  
tel. 202.595.0800  
www.bxp.com

Design Consultant  
**Pickard Chilton**  
980 Chapel Street  
New Haven, Connecticut 06510  
tel. 203.786-8600  
www.pickarchilton.com

Architect of Record  
**Kendall/Heaton Associates**  
3050 Post Oak Boulevard, Suite 1000  
Houston, Texas 77002  
tel. 713.877.1192  
www.kendall-heaton.com

Landscape Architect  
**ParkerRodriguez**  
211 N Union Street, Suite 320  
Alexandria, Virginia 22314  
tel. 703.548.5010  
www.parkerrodriguez.com

Structural Engineer  
**Thornton Tomasetti**  
1330 Connecticut Avenue NW, Suite 300  
Washington, D.C. 20036  
tel. 202.580.6300  
www.thorntontomasetti.com

Mechanical and Electrical Engineer  
**GHT**  
1110 North Glebe Road, Suite 300  
Arlington, Virginia 22201  
tel. 703.243.1200  
www.ghitd.com

Civil Engineer  
**Wiles Mensch**  
100 M Street SE, #320  
Washington, D.C. 20003  
tel. 202.638-4040  
www.wm-dc.com

Transportation Consultant  
**Wells + Associates**  
650 Massachusetts Avenue NW, Suite 600  
Washington, D.C. 20001  
tel. 202.978.5222  
www.wellsandassociates.com

Vertical Transportation  
**VDA**  
120 Eagle Rock Avenue, Suite 310  
East Hanover, New Jersey 07936  
tel. 973.994.9220  
www.vdassoc.com

REVISIONS

Schematic Design  
This drawing is not for construction or bidding purposes. Pickard Chilton Architects, Inc. has prepared this drawing solely to communicate architectural design intent. Pickard Chilton Architects, Inc. is not the Architect of Record and therefore is not responsible for preparing construction documents or for technical, legal, or construction-related matters. Pickard Chilton Architects, Inc. is not responsible for nor does it make any representation concerning dimensional accuracy of this drawing or coordination of this drawing with documents prepared by other disciplines.

NOT FOR CONSTRUCTION

VIEW FROM CORNER OF 21ST ST. AND M ST.

PROJECT: 2530  
DATE: May 2026  
SCALE:

SHEET NUMBER:

VDR A9.02

Copyright 2026 by Pickard Chilton Architects, Inc. All rights reserved.