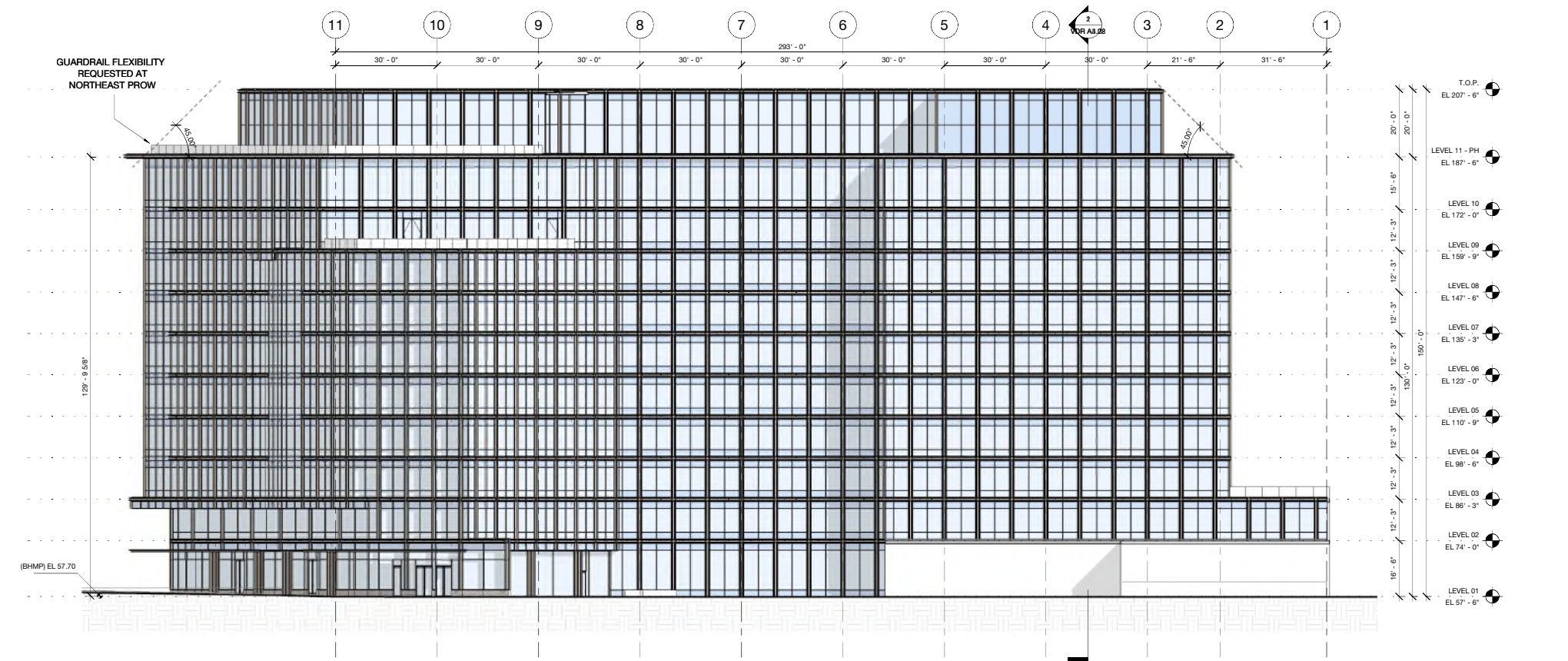
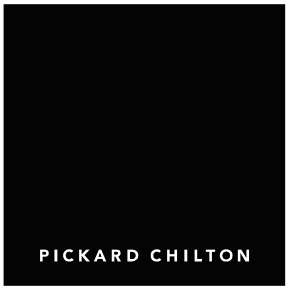


1 VDR - OVERALL ELEVATION - EAST  
1/16" = 1'-0"



2 VDR - OVERALL ELEVATION - WEST  
1/16" = 1'-0"

\* LOCATION OF ALL DOORS CONCEPTUAL AND SUBJECT TO CHANGE BASED ON OPERATIONAL AND TENANT NEEDS. FLEXIBILITY REQUESTED TO MODIFY ELEVATIONS TO INCORPORATE SELECT LOUVER PANELS TO ACCOMMODATE MECHANICAL VENTING NEEDS.



2100 M STREET NW  
2100 M St. NW  
Washington, D.C. 20037

Owner  
**BXP**  
2200 Pennsylvania Ave NW  
Washington, DC 20037  
tel. 202.595.0800  
www.bxp.com

Design Consultant  
**Pickard Chilton**  
985 Chapel Street  
New Haven, Connecticut 06510  
tel. 203.786-8600  
www.pickarchilton.com

Architect of Record  
**Kendall/Heaton Associates**  
3050 Post Oak Boulevard, Suite 1000  
Houston, Texas 77002  
tel. 713.877.1192  
www.kendall-heaton.com

Landscape Architect  
**ParkerRodriguez**  
211 N Union Street, Suite 320  
Alexandria, Virginia 22314  
tel. 703.548.5010  
www.parkerrodriguez.com

Structural Engineer  
**Thornton Tomasetti**  
1330 Connecticut Avenue NW, Suite 300  
Washington, D.C. 20036  
tel. 202.580.6300  
www.thorntontomasetti.com

Mechanical and Electrical Engineer  
**GHT**  
1110 North Glebe Road, Suite 300  
Arlington, Virginia 22201  
tel. 703.243.1200  
www.ghtid.com

Civil Engineer  
**Wiles Mensch**  
100 M Street SE, #320  
Washington, D.C. 20003  
tel. 202.638-4040  
www.wm-dc.com

Transportation Consultant  
**Wells + Associates**  
650 Massachusetts Avenue NW, Suite 600  
Washington, D.C. 20001  
tel. 202.978.5222  
www.wellsandassociates.com

Vertical Transportation  
**VDA**  
120 Eagle Rock Avenue, Suite 310  
East Hanover, New Jersey 07936  
tel. 973.994.9220  
www.vdassoc.com

REVISIONS

Schematic Design  
This drawing is not for construction or bidding purposes. Pickard Chilton Architects, Inc. has prepared this drawing solely to communicate architectural design intent. Pickard Chilton Architects, Inc. is not the Architect of Record and therefore is not responsible for preparing construction documents or for technical, legal, or construction-related matters. Pickard Chilton Architects, Inc. is not responsible for nor does it make any representation concerning dimensional accuracy of this drawing or coordination of this drawing with documents prepared by other disciplines.

NOT FOR CONSTRUCTION

OVERALL ELEVATIONS

PROJECT: 2530  
DATE: May 2025  
SCALE: 1/16" = 1'-0"  
SHEET NUMBER:  
**ZONING COMMISSION**  
**District of Columbia**  
**CASE NO. 26-05**  
**EXHIBIT NO. 3E2**  
Copyright 2025 by Pickard Chilton Architects, Inc. All rights reserved.

2100 M STREET NW  
2100 M St. NW  
Washington, D.C. 20037

Owner

**BXP**  
2200 Pennsylvania Ave NW  
Washington, DC 20037  
tel. 202.585.0800  
www.bxp.com

Design Consultant

**Pickard Chilton**  
985 Chapel Street  
New Haven, Connecticut 06510  
tel. 203.786-8600  
www.pickarchilton.com

Architect of Record

**Kendall/Heaton Associates**  
3050 Post Oak Boulevard, Suite 1000  
Houston, Texas 77002  
tel. 713.877.1192  
www.kendall-heaton.com

Landscape Architect

**ParkerRodriguez**  
211 N Union Street, Suite 320  
Alexandria, Virginia 22314  
tel. 703.548.5010  
www.parkerrodriguez.com

Structural Engineer

**Thornton Tomasetti**  
1330 Connecticut Avenue NW, Suite 300  
Washington, D.C. 20036  
tel. 202.580.6300  
www.thorntontomasetti.com

Mechanical and Electrical Engineer

**GHT**  
1110 North Glebe Road, Suite 300  
Arlington, Virginia 22201  
tel. 703.243.1200  
www.ghitd.com

Civil Engineer

**Wiles Mensch**  
100 M Street, SE #200  
Washington, D.C. 20003  
tel. 202.638-4040  
www.wm-dc.com

Transportation Consultant

**Wells + Associates**  
650 Massachusetts Avenue NW, Suite 600  
Washington, D.C. 20001  
tel. 202.978.5222  
www.wellsandassociates.com

Vertical Transportation

**VDA**  
120 Eagle Rock Avenue, Suite 310  
East Hanover, New Jersey 07936  
tel. 973.994.9220  
www.vdassoc.com

REVISIONS

Schematic Design

This drawing is not for construction or bidding purposes. Pickard Chilton Architects, Inc. has prepared this drawing solely to communicate architectural design intent. Pickard Chilton Architects, Inc. is not the Architect of Record and therefore is not responsible for preparing construction documents or for technical, legal, or construction-related matters. Pickard Chilton Architects, Inc. is not responsible for nor does it make any representation concerning dimensional accuracy of this drawing or coordination of this drawing with documents prepared by other disciplines.

NOT FOR CONSTRUCTION

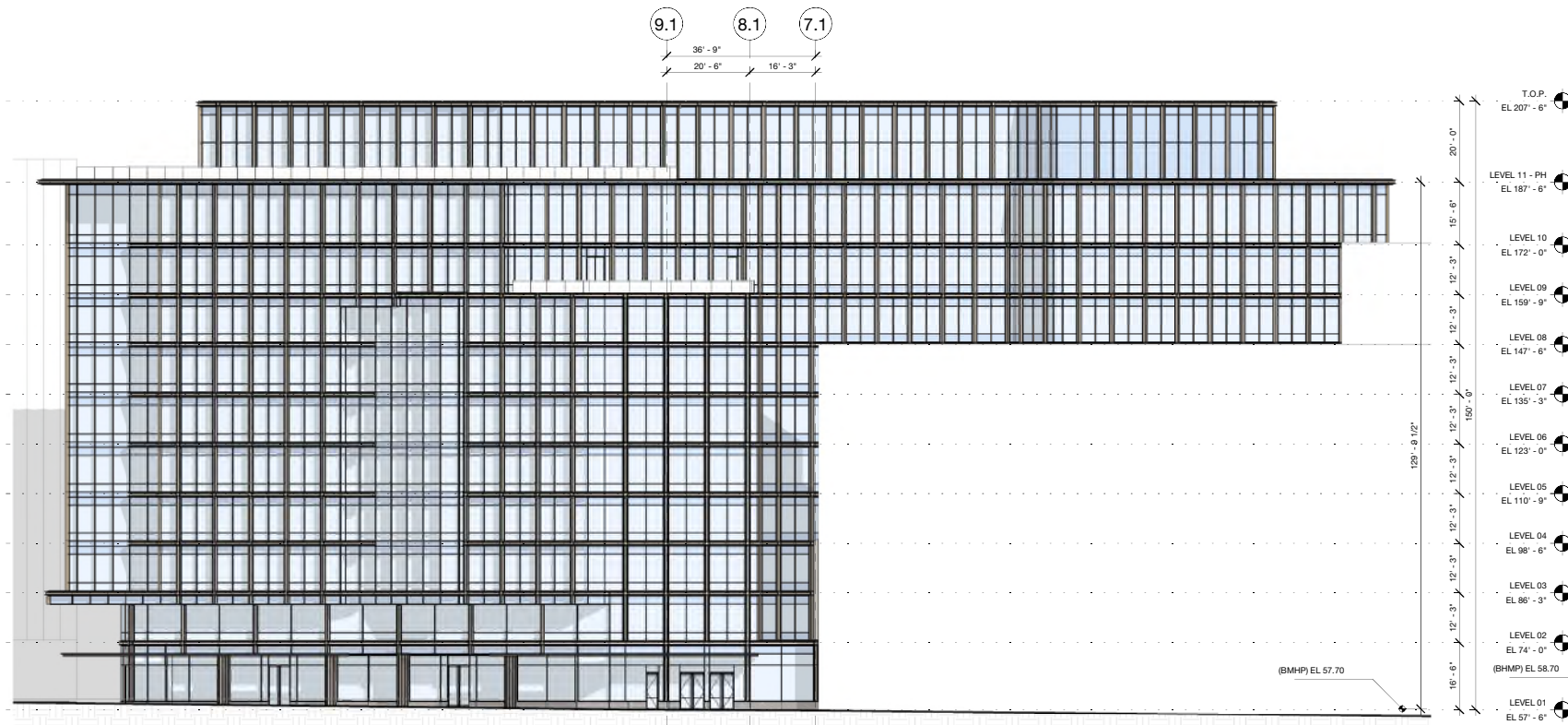
OVERALL ELEVATIONS

PROJECT: 2530  
DATE: May 2026  
SCALE: 1/16" = 1'-0"

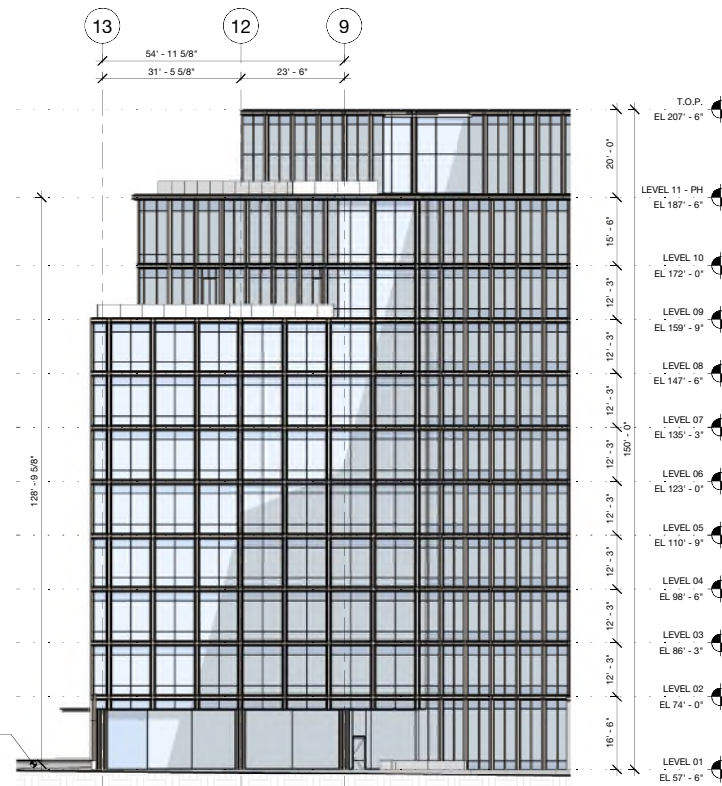
SHEET NUMBER:

**A3.02**

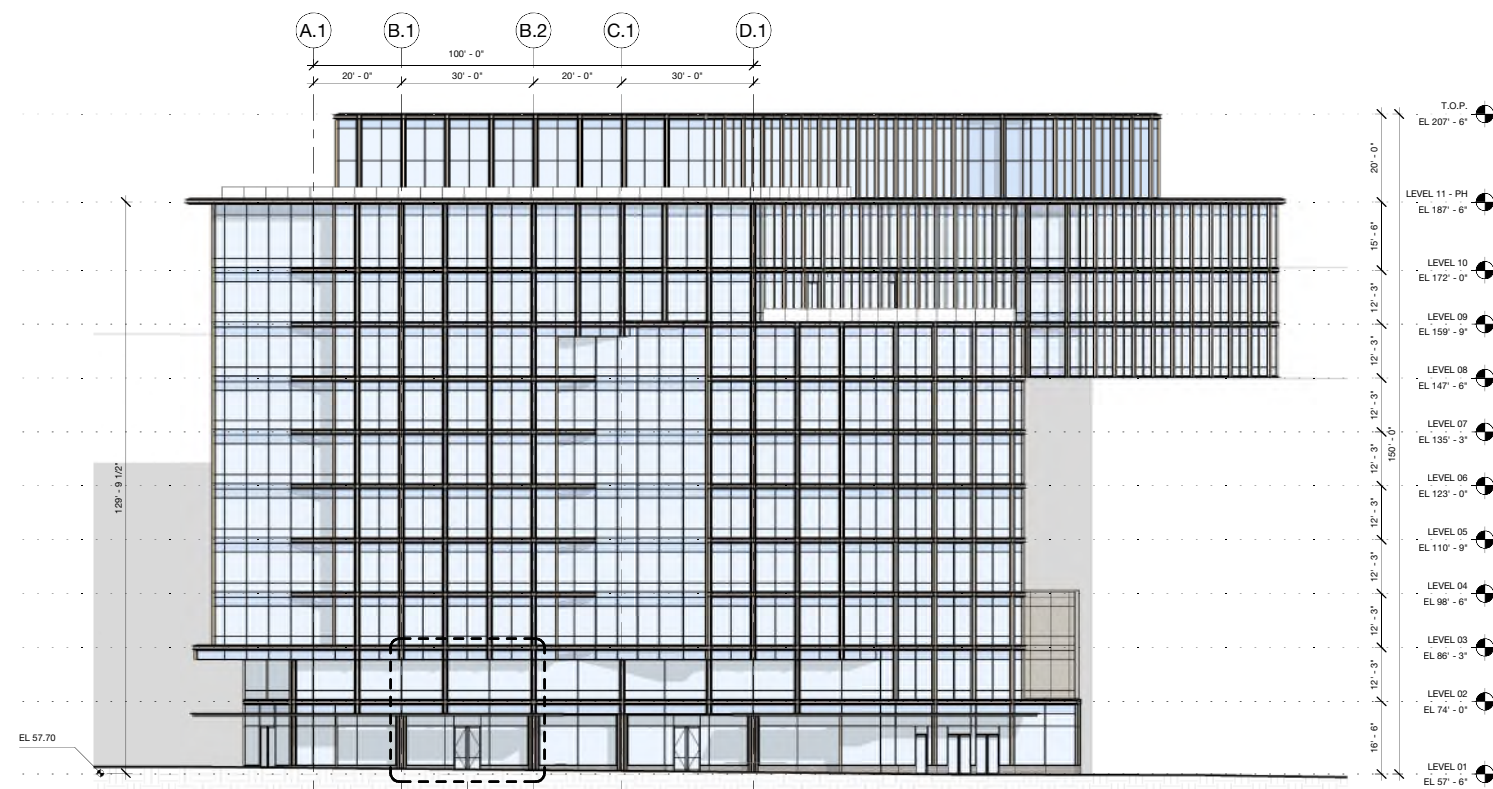
Copyright 2026 by Pickard Chilton Architects, Inc. All rights reserved.



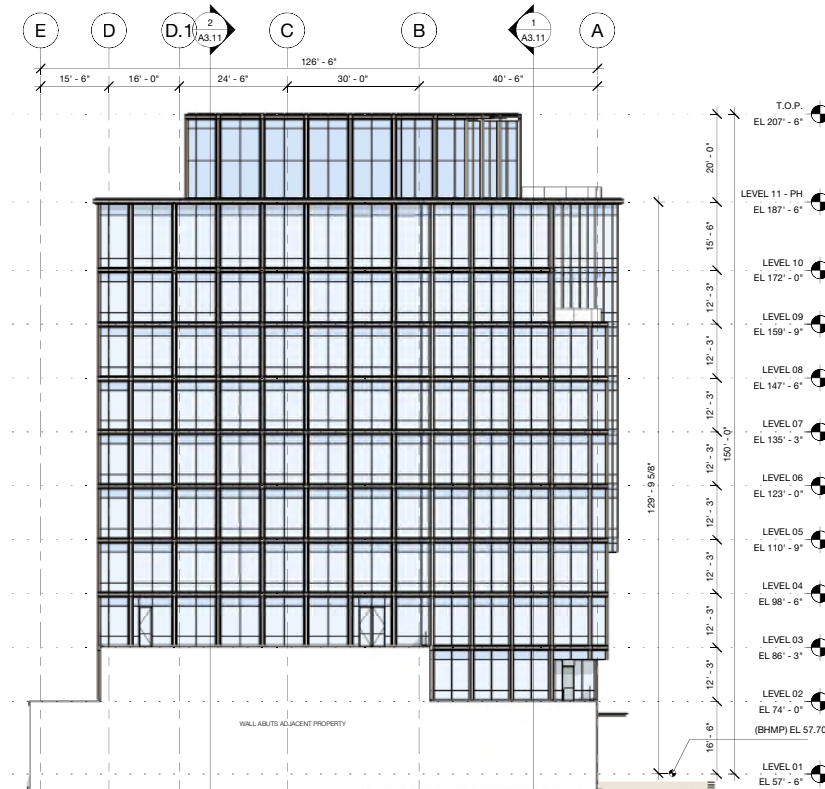
1 OVERALL ELEVATION - NORTHWEST  
1/16" = 1'-0"



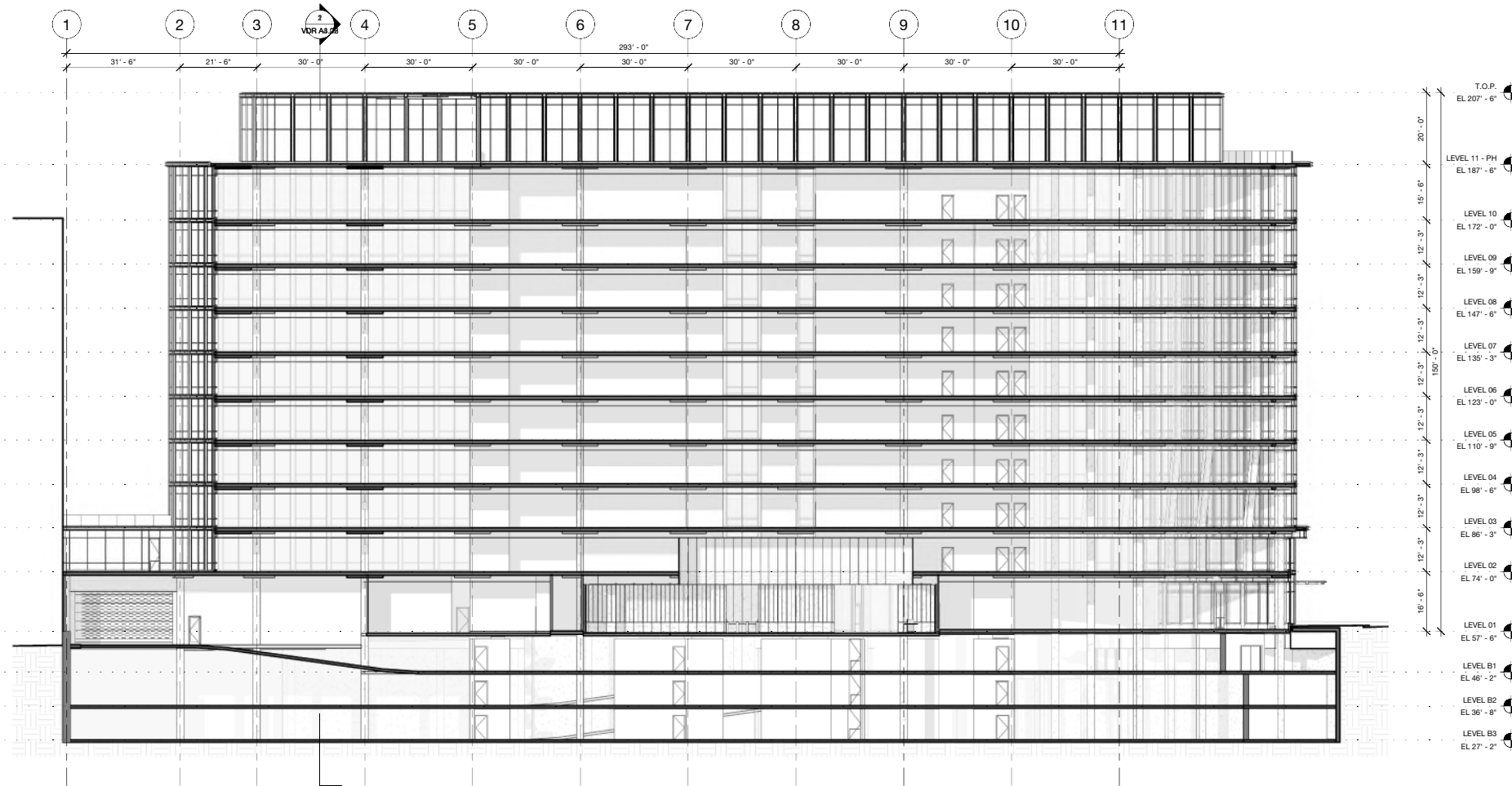
3 OVERALL ELEVATION - SOUTHWEST  
1/16" = 1'-0"



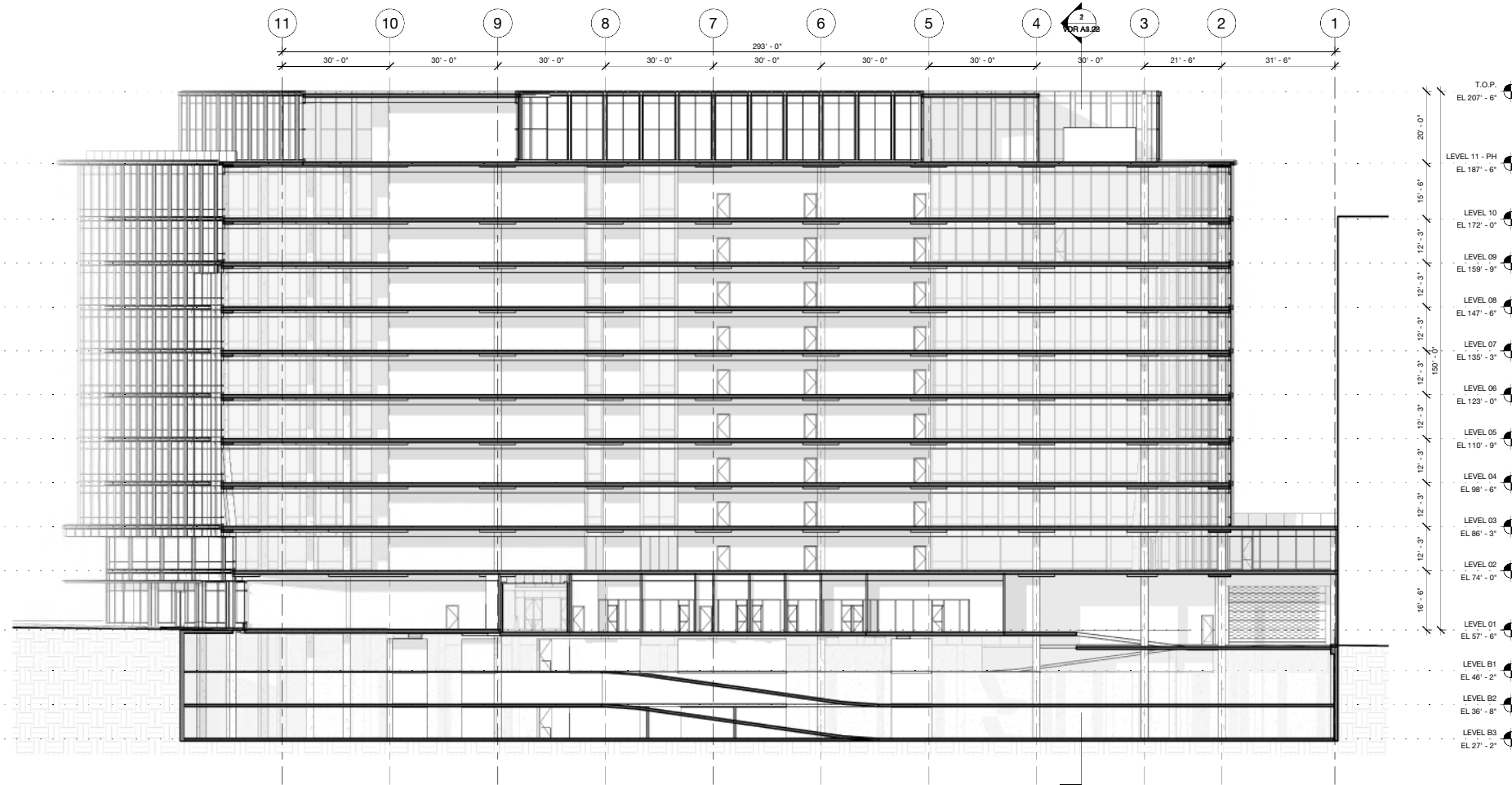
2 OVERALL ELEVATION - NORTH  
1/16" = 1'-0"



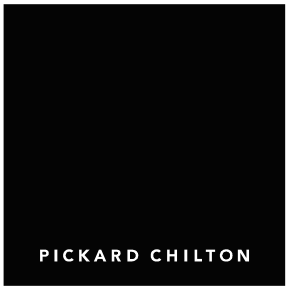
4 OVERALL ELEVATION - SOUTH  
1/16" = 1'-0"



1 VDR - OVERALL SECTION (LONGITUDINAL) - LOOKING WEST  
1/16" = 1'-0"



2 VDR - OVERALL SECTION (LONGITUDINAL) - LOOKING EAST  
1/16" = 1'-0"



2100 M STREET NW  
2100 M St. NW  
Washington, D.C. 20037

Owner  
**BXP**  
2200 Pennsylvania Ave NW  
Washington, DC 20037  
tel. 202.595.0800  
www.bxp.com

Design Consultant  
**Pickard Chilton**  
995 Chapel Street  
New Haven, Connecticut 06510  
tel. 203.786-8600  
www.pickarchilton.com

Architect of Record  
**Kendall/Heaton Associates**  
3050 Post Oak Boulevard, Suite 1000  
Houston, Texas 77002  
tel. 713.877.1192  
www.kendall-heaton.com

Landscape Architect  
**ParkerRodriguez**  
211 N Union Street, Suite 320  
Alexandria, Virginia 22314  
tel. 703.548.5010  
www.parkerrodriguez.com

Structural Engineer  
**Thornton Tomasetti**  
1330 Connecticut Avenue NW, Suite 300  
Washington, D.C. 20036  
tel. 202.580.6300  
www.thorntontomasetti.com

Mechanical and Electrical Engineer  
**GHT**  
1110 North Glebe Road, Suite 300  
Arlington, Virginia 22201  
tel. 703.243.1200  
www.ghtid.com

Civil Engineer  
**Wiles Mensch**  
100 M Street SE #200  
Washington, D.C. 20003  
tel. 202-638-4040  
www.wm-dc.com

Transportation Consultant  
**Wells + Associates**  
650 Massachusetts Avenue NW, Suite 600  
Washington, D.C. 20001  
tel. 202.978.5222  
www.wellsandassociates.com

Vertical Transportation  
**VDA**  
120 Eagle Rock Avenue, Suite 310  
East Hanover, New Jersey 07936  
tel. 973.994.9220  
www.vdassoc.com

REVISIONS

Schematic Design  
This drawing is not for construction or bidding purposes. Pickard Chilton Architects, Inc. has prepared this drawing solely to communicate architectural design intent. Pickard Chilton Architects, Inc. is not the Architect of Record and therefore is not responsible for preparing construction documents or for technical, legal, or construction-related matters. Pickard Chilton Architects, Inc. is not responsible for nor does it make any representation concerning dimensional accuracy of this drawing or coordination of this drawing with documents prepared by other disciplines.

NOT FOR CONSTRUCTION

OVERALL SECTIONS - LONGITUDINAL

PROJECT: 2530  
DATE: May 2026  
SCALE: 1/16" = 1'-0"

SHEET NUMBER:

VDR A3.21

Copyright 2026 by Pickard Chilton Architects, Inc. All rights reserved.

2100 M STREET NW  
2100 M St. NW  
Washington, D.C. 20037

Owner  
**BXP**  
2200 Pennsylvania Ave NW  
Washington, DC 20037  
tel. 202.595.0800  
www.bxp.com

Design Consultant  
**Pickard Chilton**  
981 Chapel Street  
New Haven, Connecticut 06510  
tel. 203.786-8600  
www.pickarchilton.com

Architect of Record  
**Kendall/Heaton Associates**  
3050 Post Oak Boulevard, Suite 1000  
Houston, Texas 77002  
tel. 713.877.1192  
www.kendall-heaton.com

Landscape Architect  
**ParkerRodriguez**  
211 N Union Street, Suite 320  
Alexandria, Virginia 22314  
tel. 703.548.5010  
www.parkerrodriguez.com

Structural Engineer  
**Thornton Tomasetti**  
1330 Connecticut Avenue NW, Suite 300  
Washington, D.C. 20036  
tel. 202.580.6300  
www.thorntontomasetti.com

Mechanical and Electrical Engineer  
**GHT**  
1110 North Glebe Road, Suite 300  
Arlington, Virginia 22201  
tel. 703.243.1200  
www.ghtid.com

Civil Engineer  
**Wiles Mensch**  
100 M Street, SE #320  
Washington, D.C. 20003  
tel. 202.638-4040  
www.wm-dc.com

Transportation Consultant  
**Wells + Associates**  
650 Massachusetts Avenue NW, Suite 600  
Washington, D.C. 20001  
tel. 202.978.5222  
www.wellsandassociates.com

Vertical Transportation  
**VDA**  
120 Eagle Rock Avenue, Suite 310  
East Hanover, New Jersey 07936  
tel. 973.994.5220  
www.vdassoc.com

REVISIONS

Schematic Design

This drawing is not for construction or bidding purposes. Pickard Chilton Architects, Inc. has prepared this drawing solely to communicate architectural design intent. Pickard Chilton Architects, Inc. is not the Architect of Record and therefore is not responsible for preparing construction documents or for technical, legal, or construction-related matters. Pickard Chilton Architects, Inc. is not responsible for nor does it make any representation concerning dimensional accuracy of this drawing or coordination of this drawing with documents prepared by other disciplines.

NOT FOR CONSTRUCTION

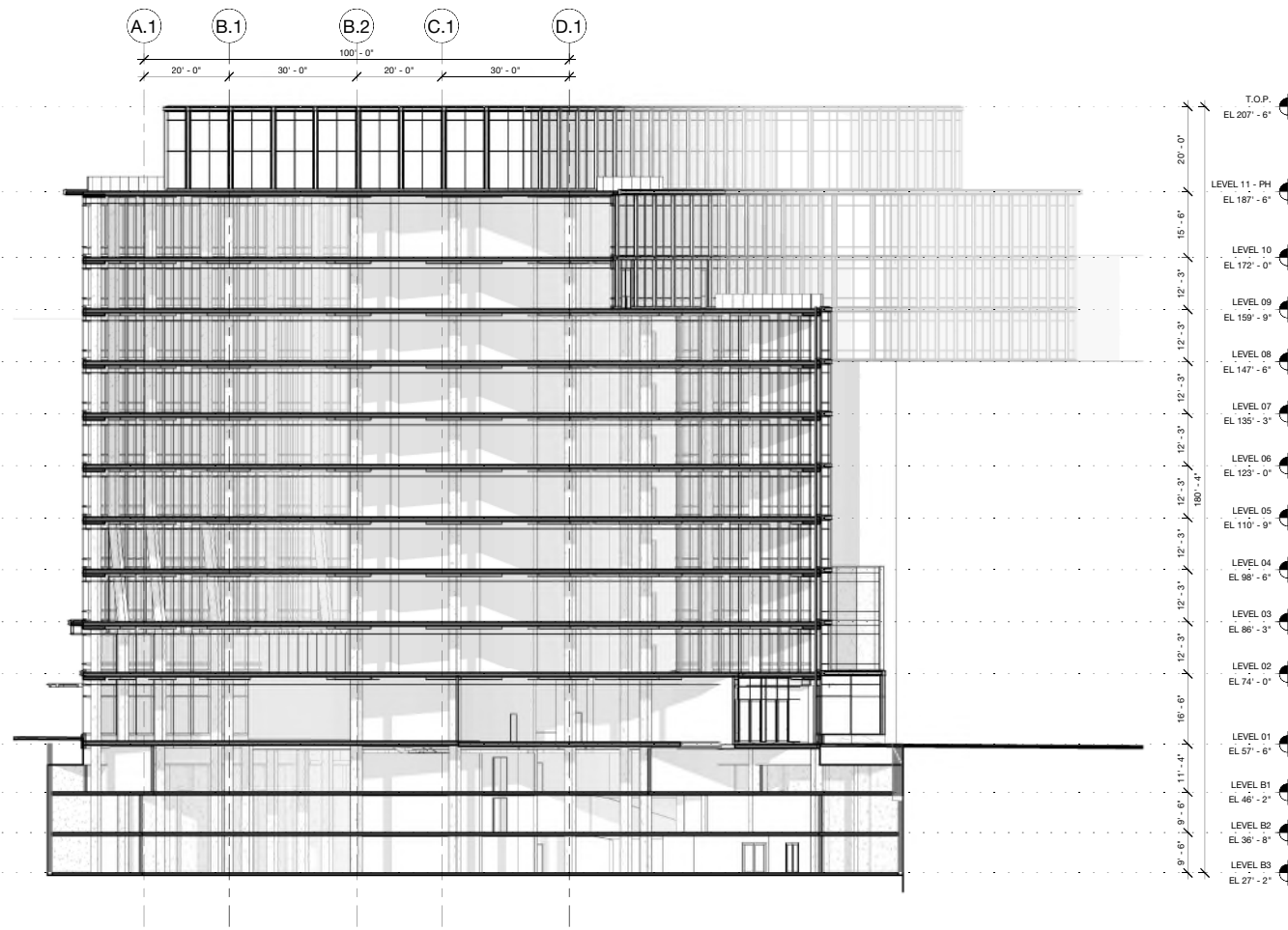
OVERALL SECTIONS - TRANSVERSE

PROJECT: 2530  
DATE: May 2026  
SCALE: 1/16" = 1'-0"

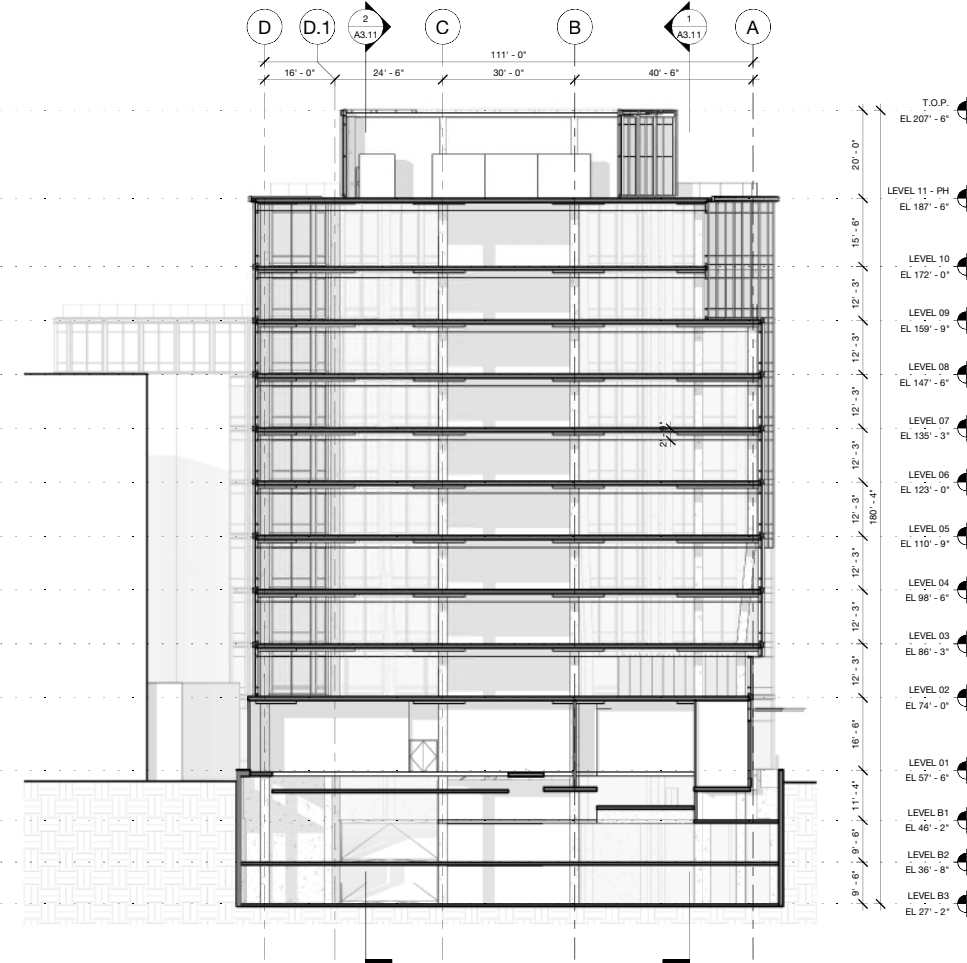
SHEET NUMBER:

**VDR A3.22**

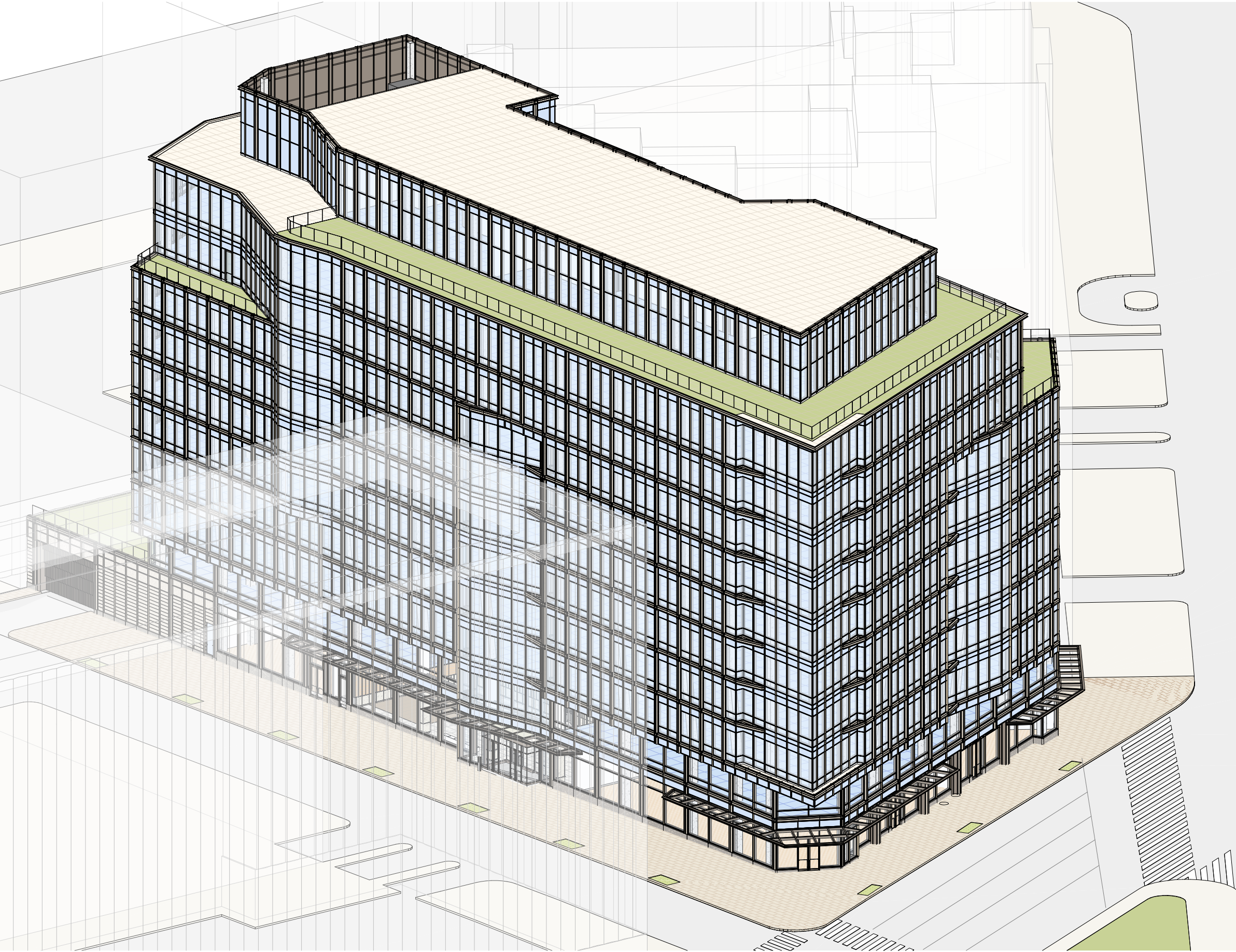
Copyright 2026 by Pickard Chilton Architects, Inc. All rights reserved.



1 VDR - OVERALL SECTION (TRANSVERSE) - LOOKING SOUTH  
1/16" = 1'-0"



2 VDR - OVERALL SECTION (TRANSVERSE) - LOOKING NORTH  
1/16" = 1'-0"



PICKARD CHILTON

2100 M STREET NW  
2100 M St. NW  
Washington, D.C. 20037

Owner  
**BXP**  
2200 Pennsylvania Ave NW  
Washington, DC 20037  
tel. 202.595.0800  
www.bxp.com

Design Consultant  
**Pickard Chilton**  
690 Chapel Street  
New Haven, Connecticut 06510  
tel. 203.786-8600  
www.pickarchilton.com

Architect of Record  
**Kendall/Heaton Associates**  
3050 Post Oak Boulevard, Suite 1000  
Houston, Texas 77002  
tel. 713.877.1192  
www.kendall-heaton.com

Landscape Architect  
**ParkerRodriguez**  
211 N Union Street, Suite 320  
Alexandria, Virginia 22314  
tel. 703.548.5010  
www.parkerrodriguez.com

Structural Engineer  
**Thornton Tomasetti**  
1330 Connecticut Avenue NW, Suite 300  
Washington, D.C. 20036  
tel. 202.590.6300  
www.thorntontomasetti.com

Mechanical and Electrical Engineer  
**GHT**  
1110 North Glebe Road, Suite 300  
Arlington, Virginia 22201  
tel. 703.243.1200  
www.ghtid.com

Civil Engineer  
**Wiles Mensch**  
100 M Street SE, #200  
Washington, D.C. 20003  
tel. 202-638-4040  
www.wm-dc.com

Transportation Consultant  
**Wells + Associates**  
650 Massachusetts Avenue NW, Suite 600  
Washington, D.C. 20001  
tel. 202.978.5222  
www.wellsandassociates.com

Vertical Transportation  
**VDA**  
120 Eagle Rock Avenue, Suite 310  
East Hanover, New Jersey 07936  
tel. 973.994.9220  
www.vdassoc.com

REVISIONS

**Schematic Design**  
This drawing is not for construction or bidding purposes. Pickard Chilton Architects, Inc. has prepared this drawing solely to communicate architectural design intent. Pickard Chilton Architects, Inc. is not the Architect of Record and therefore is not responsible for preparing construction documents or for technical, legal, or construction-related matters. Pickard Chilton Architects, Inc. is not responsible for nor does it make any representation concerning dimensional accuracy of this drawing or coordination of this drawing with documents prepared by other disciplines.

NOT FOR CONSTRUCTION

OVERALL AXONOMETRIC - NORTHEAST

PROJECT: 2530  
DATE: May 2026  
SCALE:

SHEET NUMBER:

VDR A4.01

Copyright 2026 by Pickard Chilton Architects, Inc. All rights reserved.

1 VDR - OVERALL AXONOMETRIC - NORTHEAST