

\* LANDSCAPE PAVING PLANS ARE CONCEPTUAL AND SUBJECT TO CHANGE

PICKARD CHILTON

**2100 M STREET NW**  
2100 M St. NW  
Washington, D.C. 20037

Owner  
**BXP**  
2200 Pennsylvania Ave NW  
Washington, DC 20037  
tel. 202.585.0800  
www.bxp.com

Design Consultant  
**Pickard Chilton**  
600 Chapel Street  
New Haven, Connecticut 06510  
tel. 203.786-8600  
www.pickardchilton.com

Architect of Record  
**Kendall/Heaton Associates**  
3050 Post Oak Boulevard, Suite 1000  
Houston, Texas 77002  
tel. 713.877.1192  
www.kendall-heaton.com

Landscape Architect  
**ParkerRodriguez**  
211 N Union Street, Suite 320  
Alexandria, Virginia 22314  
tel. 703.548.5010  
www.parkerrodriguez.com

Structural Engineer  
**Thornton Tomasetti**  
1330 Connecticut Avenue NW, Suite 300  
Washington, D.C. 20036  
tel. 202.580.6300  
www.thorntontomasetti.com

Mechanical and Electrical Engineer  
**GHT**  
1110 North Glebe Road, Suite 300  
Arlington, Virginia 22201  
tel. 703.243.1200  
www.ghtinc.com

Civil Engineer  
**Wiles Mensch**  
100 M Street SE, #320  
Washington, D.C. 20003  
tel. 202.638-4040  
www.wm-dc.com

Transportation Consultant  
**Wells + Associates**  
650 Massachusetts Avenue NW, Suite 600  
Washington, D.C. 20001  
tel. 202.978.5222  
www.wellsandassociates.com

Vertical Transportation  
**VDA**  
120 Eagle Rock Avenue, Suite 310  
East Hanover, New Jersey 07936  
tel. 973.994.9220  
www.vdasoc.com

REVISIONS

05.13.2026 VDR SUBMISSION

VDR Submission

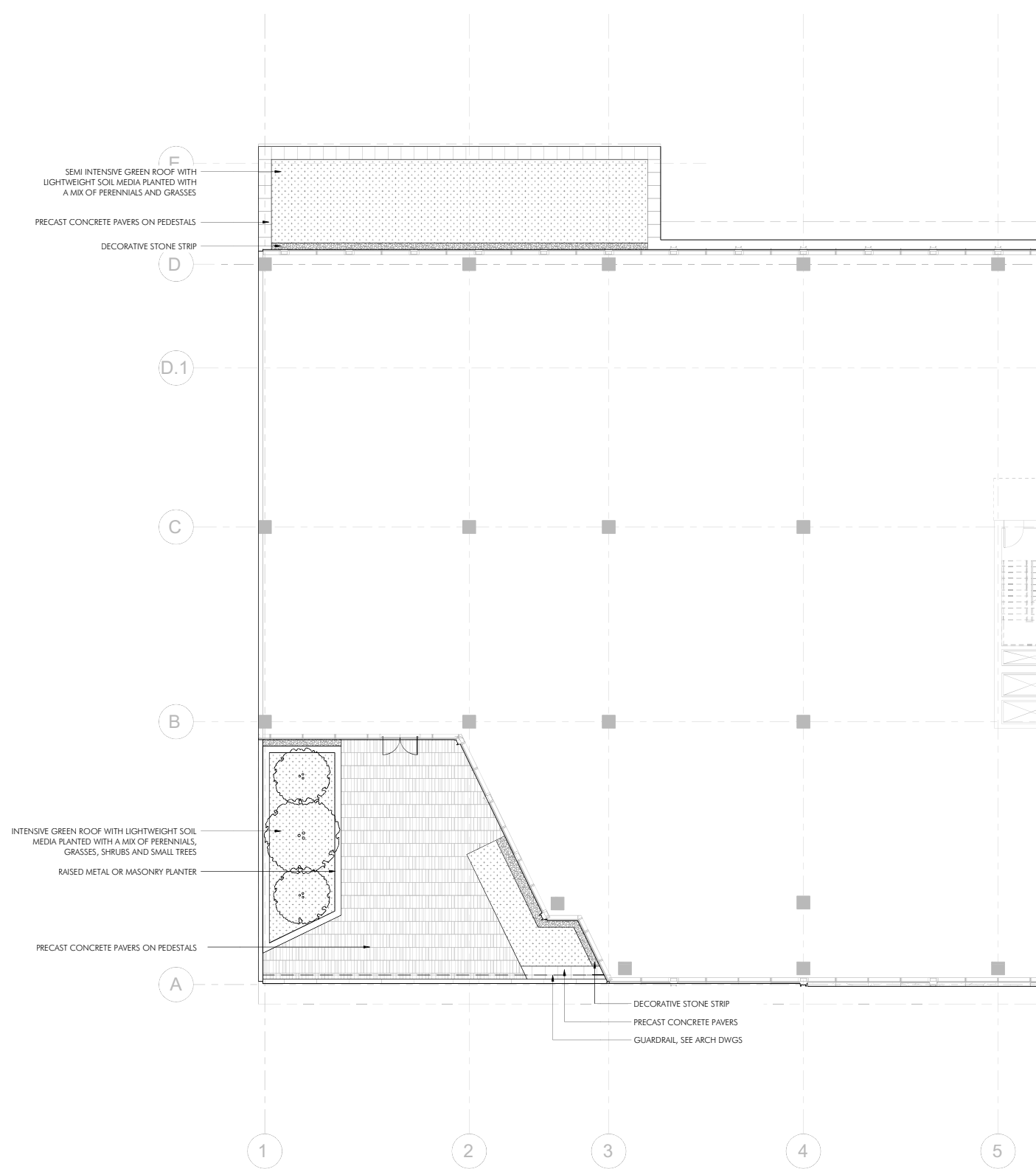
This drawing is not for construction or bidding purposes. Pickard Chilton Architects, Inc. has prepared this drawing solely to communicate architectural design intent. Pickard Chilton Architects, Inc. is not the Architect of Record and therefore is not responsible for preparing construction documents or for technical, legal, or construction-related matters. Pickard Chilton Architects, Inc. is not responsible for nor does it make any representation concerning dimensional accuracy of this drawing or coordination of this drawing with documents prepared by other disciplines.

NOT FOR CONSTRUCTION

LANDSCAPE LAYOUT PLAN - LEVEL 02

PROJECT: 2530  
DATE: May 2026  
SCALE: As Noted  
SHEET NUMBER:  
**VDR L102**  
ZONING COMMISSION  
District of Columbia  
CASE NO. 26-05  
EXHIBIT NO. 3E6

Copyright 2018 by Pickard Chilton Architects, Inc. All rights reserved.



F  
SEMI INTENSIVE GREEN ROOF WITH LIGHTWEIGHT SOIL MEDIA PLANTED WITH A MIX OF PERENNIALS AND GRASSES

D  
PRECAST CONCRETE PAVERS ON PEDESTALS

D  
DECORATIVE STONE STRIP

A  
INTENSIVE GREEN ROOF WITH LIGHTWEIGHT SOIL MEDIA PLANTED WITH A MIX OF PERENNIALS, GRASSES, SHRUBS AND SMALL TREES

A  
RAISED METAL OR MASONRY PLANTER

A  
PRECAST CONCRETE PAVERS ON PEDESTALS

DECORATIVE STONE STRIP  
PRECAST CONCRETE PAVERS  
GUARDRAIL, SEE ARCH DWGS

**01** LANDSCAPE LAYOUT PLAN - LEVEL 02  
1/8" = 1'-0"



\* LANDSCAPE PAVING PLANS ARE CONCEPTUAL AND SUBJECT TO CHANGE

PICKARD CHILTON

**2100 M STREET NW**  
2100 M St. NW  
Washington, D.C. 20037

Owner  
**BXP**  
2200 Pennsylvania Ave NW  
Washington, DC 20037  
tel. 202.585.0800  
www.bxp.com

Design Consultant  
**Pickard Chilton**  
660 Chapel Street  
New Haven, Connecticut 06510  
tel. 203.786-8600  
www.pickardchilton.com

Architect of Record  
**Kendall/Heaton Associates**  
3050 Post Oak Boulevard, Suite 1000  
Houston, Texas 77002  
tel. 713.877.1192  
www.kendall-heaton.com

Landscape Architect  
**ParkerRodriguez**  
211 N Union Street, Suite 320  
Alexandria, Virginia 22314  
tel. 703.548.5010  
www.parkerrodriguez.com

Structural Engineer  
**Thornton Tomasetti**  
1330 Connecticut Avenue NW, Suite 300  
Washington, D.C. 20036  
tel. 202.580.6300  
www.thorntontomasetti.com

Mechanical and Electrical Engineer  
**GHT**  
1110 North Glebe Road, Suite 300  
Arlington, Virginia 22201  
tel. 703.243.1200  
www.ghtinc.com

Civil Engineer  
**Wiles Mensch**  
100 M Street SE, #200  
Washington, D.C. 20003  
tel. 202.638-4040  
www.wm-dc.com

Transportation Consultant  
**Wells + Associates**  
650 Massachusetts Avenue NW, Suite 600  
Washington, D.C. 20001  
tel. 202.978.5222  
www.wellsandassociates.com

Vertical Transportation  
**VDA**  
120 Eagle Rock Avenue, Suite 310  
East Hanover, New Jersey 07936  
tel. 973.994.9220  
www.vdassoc.com

REVISIONS

05.13.2026 VDR SUBMISSION

VDR Submission

This drawing is not for construction or bidding purposes. Pickard Chilton Architects, Inc. has prepared this drawing solely to communicate architectural design intent. Pickard Chilton Architects, Inc. is not the Architect of Record and therefore is not responsible for preparing construction documents or for technical, legal, or construction-related matters. Pickard Chilton Architects, Inc. is not responsible for nor does it make any representation concerning dimensional accuracy of this drawing or coordination of this drawing with documents prepared by other disciplines.

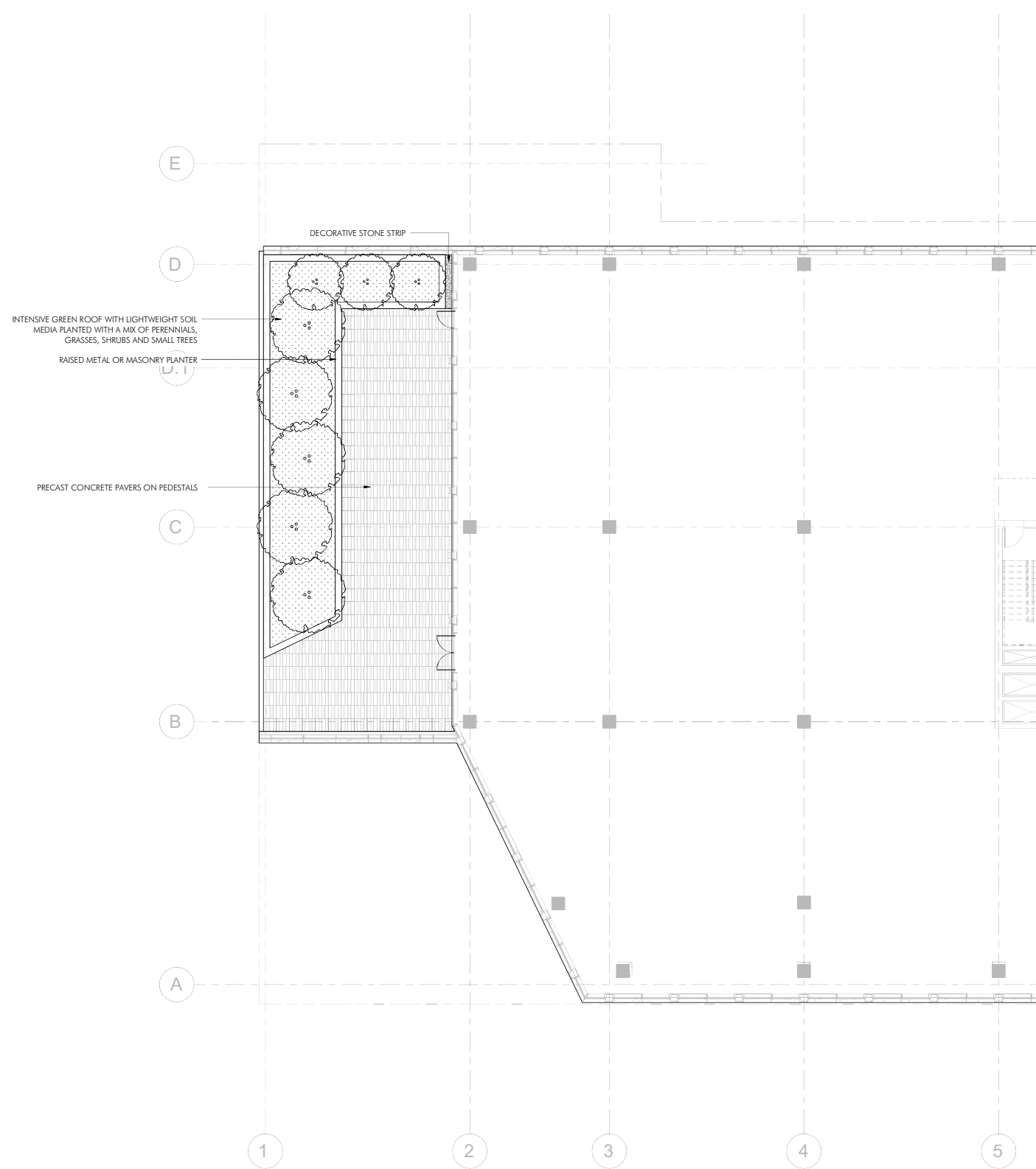
NOT FOR CONSTRUCTION

**LANDSCAPE LAYOUT PLAN - LEVEL 03**

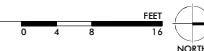
PROJECT: 2530  
DATE: May 2026  
SCALE: As Noted

SHEET NUMBER:  
**VDR L103**

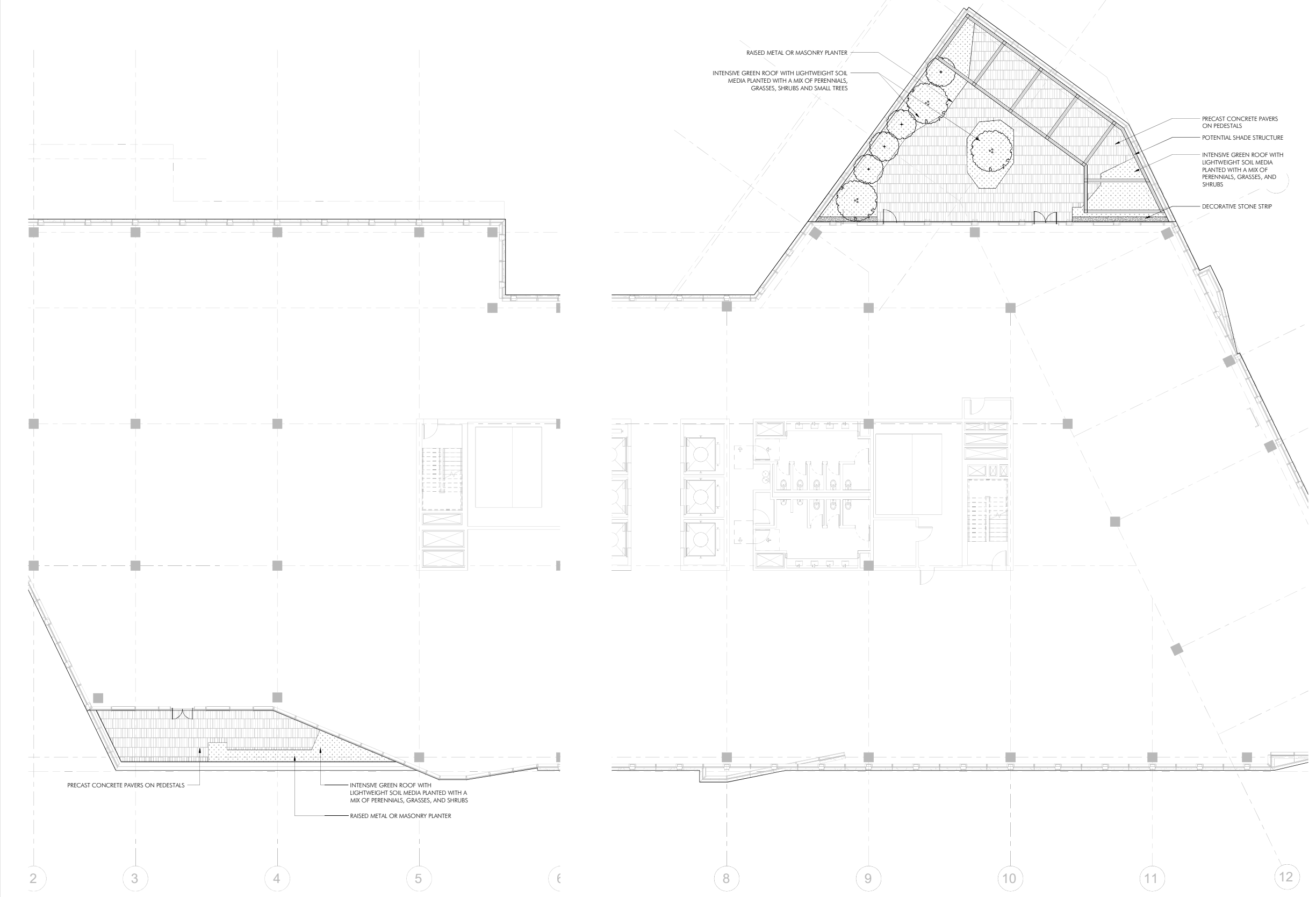
Copyright 2018 by Pickard Chilton Architects, Inc. All rights reserved.



**01 LANDSCAPE LAYOUT PLAN - LEVEL 03**  
1/8"=1'-0"



\* LANDSCAPE PAVING PLANS ARE CONCEPTUAL AND SUBJECT TO CHANGE



**01** LANDSCAPE LAYOUT PLAN - LEVEL 09 SOUTH TERRACE  
1/8"=1'-0"

**02** LANDSCAPE LAYOUT PLAN - LEVEL 09 NORTH TERRACE  
1/8"=1'-0"



PICKARD CHILTON

**2100 M STREET NW**  
2100 M St. NW  
Washington, D.C. 20037

Owner  
**BXP**  
2200 Pennsylvania Ave NW  
Washington, DC 20037  
tel. 202.585.0800  
www.bxp.com

Design Consultant  
**Pickard Chilton**  
980 Chapel Street  
New Haven, Connecticut 06510  
tel. 203.786-8600  
www.pickarchilton.com

Architect of Record  
**Kendall/Heaton Associates**  
3050 Post Oak Boulevard, Suite 1000  
Houston, Texas 77002  
tel. 713.877.1192  
www.kendall-heaton.com

Landscape Architect  
**ParkerRodriguez**  
211 N Union Street, Suite 320  
Alexandria, Virginia 22314  
tel. 703.548.5010  
www.parkerrodriguez.com

Structural Engineer  
**Thornton Tomasetti**  
1330 Connecticut Avenue NW, Suite 300  
Washington, D.C. 20036  
tel. 202.580.6300  
www.thorntontomasetti.com

Mechanical and Electrical Engineer  
**GHT**  
1110 North Glebe Road, Suite 300  
Arlington, Virginia 22201  
tel. 703.243.1200  
www.ghtid.com

Civil Engineer  
**Wiles Mensch**  
100 M Street SE, #200  
Washington, D.C. 20003  
tel. 202.638-4040  
www.wm-dc.com

Transportation Consultant  
**Wells + Associates**  
650 Massachusetts Avenue NW, Suite 600  
Washington, D.C. 20001  
tel. 202.978.5222  
www.wellsandassociates.com

Vertical Transportation  
**VDA**  
120 Eagle Rock Avenue, Suite 310  
East Hanover, New Jersey 07936  
tel. 973.994.9220  
www.vdasoc.com

REVISIONS

NO.	DATE	DESCRIPTION
05.13.2026	VDR SUBMISSION	

**VDR Submission**  
This drawing is not for construction or bidding purposes. Pickard Chilton Architects, Inc. has prepared this drawing solely to communicate architectural design intent. Pickard Chilton Architects, Inc. is not the Architect of Record and therefore is not responsible for preparing construction documents or for technical, legal, or construction-related matters. Pickard Chilton Architects, Inc. is not responsible for nor does it make any representation concerning dimensional accuracy of this drawing or coordination of this drawing with documents prepared by other disciplines.

**NOT FOR CONSTRUCTION**

**LANDSCAPE LAYOUT PLAN - LEVEL 09**

PROJECT: 2530  
DATE: May 2026  
SCALE: As Noted

SHEET NUMBER:  
**VDR L104**

Copyright 2018 by Pickard Chilton Architects, Inc. All rights reserved.

\* LANDSCAPE PAVING PLANS ARE CONCEPTUAL AND SUBJECT TO CHANGE

PICKARD CHILTON

**2100 M STREET NW**  
2100 M St. NW  
Washington, D.C. 20037

**Owner**  
**BXP**  
2200 Pennsylvania Ave NW  
Washington, DC 20037  
tel. 202.585.0800  
www.bxp.com

**Design Consultant**  
**Pickard Chilton**  
860 Chapel Street  
New Haven, Connecticut 06510  
tel. 203.786-8600  
www.pickardchilton.com

**Architect of Record**  
**Kendall/Heaton Associates**  
3050 Post Oak Boulevard, Suite 1000  
Houston, Texas 77002  
tel. 713.877.1192  
www.kendall-heaton.com

**Landscape Architect**  
**ParkerRodriguez**  
211 N Union Street, Suite 320  
Alexandria, Virginia 22314  
tel. 703.548.5010  
www.parkerrodriguez.com

**Structural Engineer**  
**Thornton Tomasetti**  
1330 Connecticut Avenue NW, Suite 300  
Washington, D.C. 20036  
tel. 202.580.6300  
www.thorntontomasetti.com

**Mechanical and Electrical Engineer**  
**GHT**  
1110 North Glebe Road, Suite 300  
Arlington, Virginia 22201  
tel. 703.243.1200  
www.ghtid.com

**Civil Engineer**  
**Wiles Mensch**  
100 M Street SE, #320  
Washington, D.C. 20003  
tel. 202.638-4040  
www.wm-dc.com

**Transportation Consultant**  
**Wells + Associates**  
650 Massachusetts Avenue NW, Suite 600  
Washington, D.C. 20001  
tel. 202.978.5222  
www.wellsandassociates.com

**Vertical Transportation**  
**VDA**  
120 Eagle Rock Avenue, Suite 310  
East Hanover, New Jersey 07936  
tel. 973.994.9220  
www.vdassoc.com

**REVISIONS**

05.13.2026 VDR SUBMISSION

**VDR Submission**

This drawing is not for construction or bidding purposes. Pickard Chilton Architects, Inc. has prepared this drawing solely to communicate architectural design intent. Pickard Chilton Architects, Inc. is not the Architect of Record and therefore is not responsible for preparing construction documents or for technical, legal, or construction-related matters. Pickard Chilton Architects, Inc. is not responsible for nor does it make any representation concerning dimensional accuracy of this drawing or coordination of this drawing with documents prepared by other disciplines.

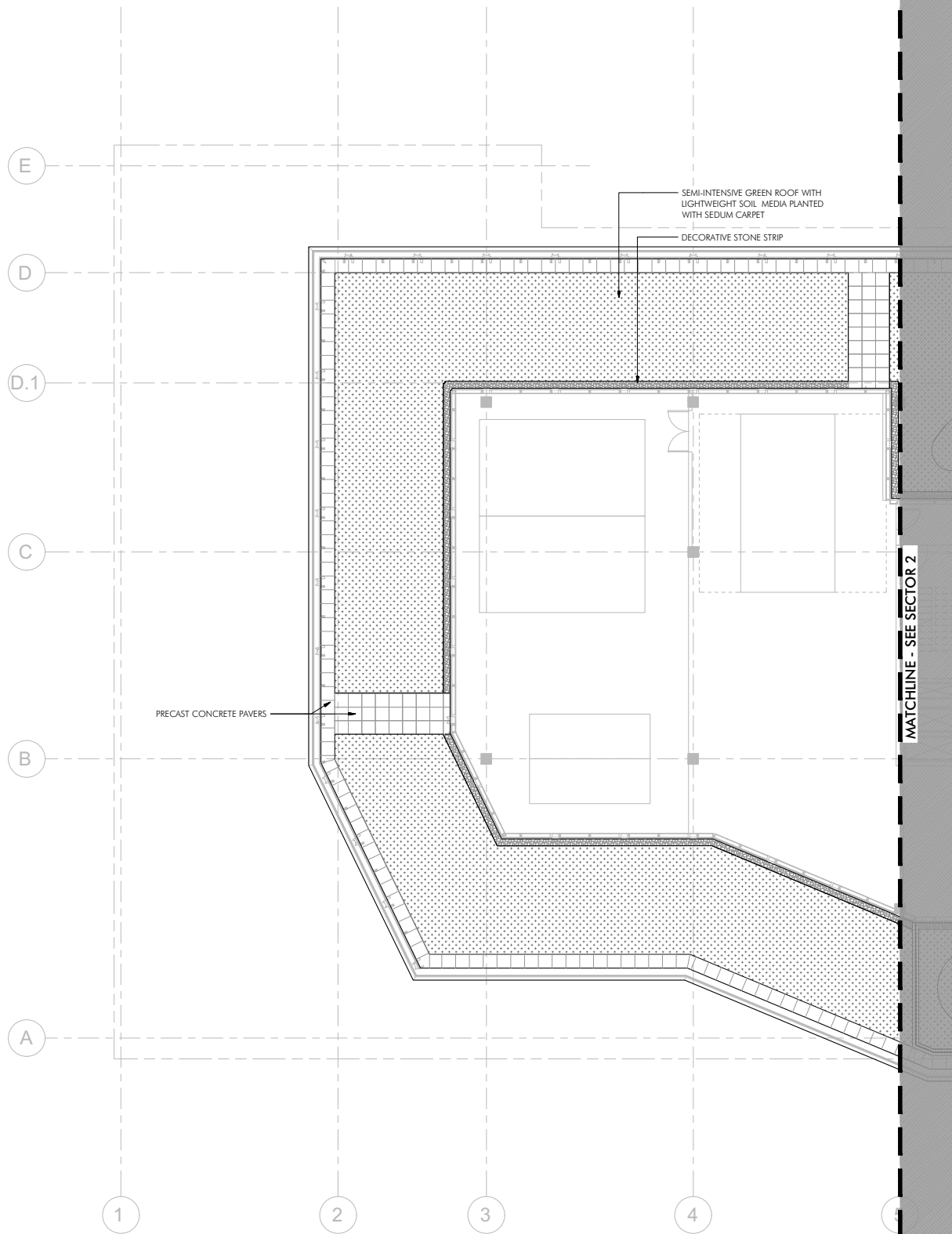
**NOT FOR CONSTRUCTION**

**LANDSCAPE LAYOUT PLAN - PH**

PROJECT: 2530  
DATE: May 2026  
SCALE: As Noted

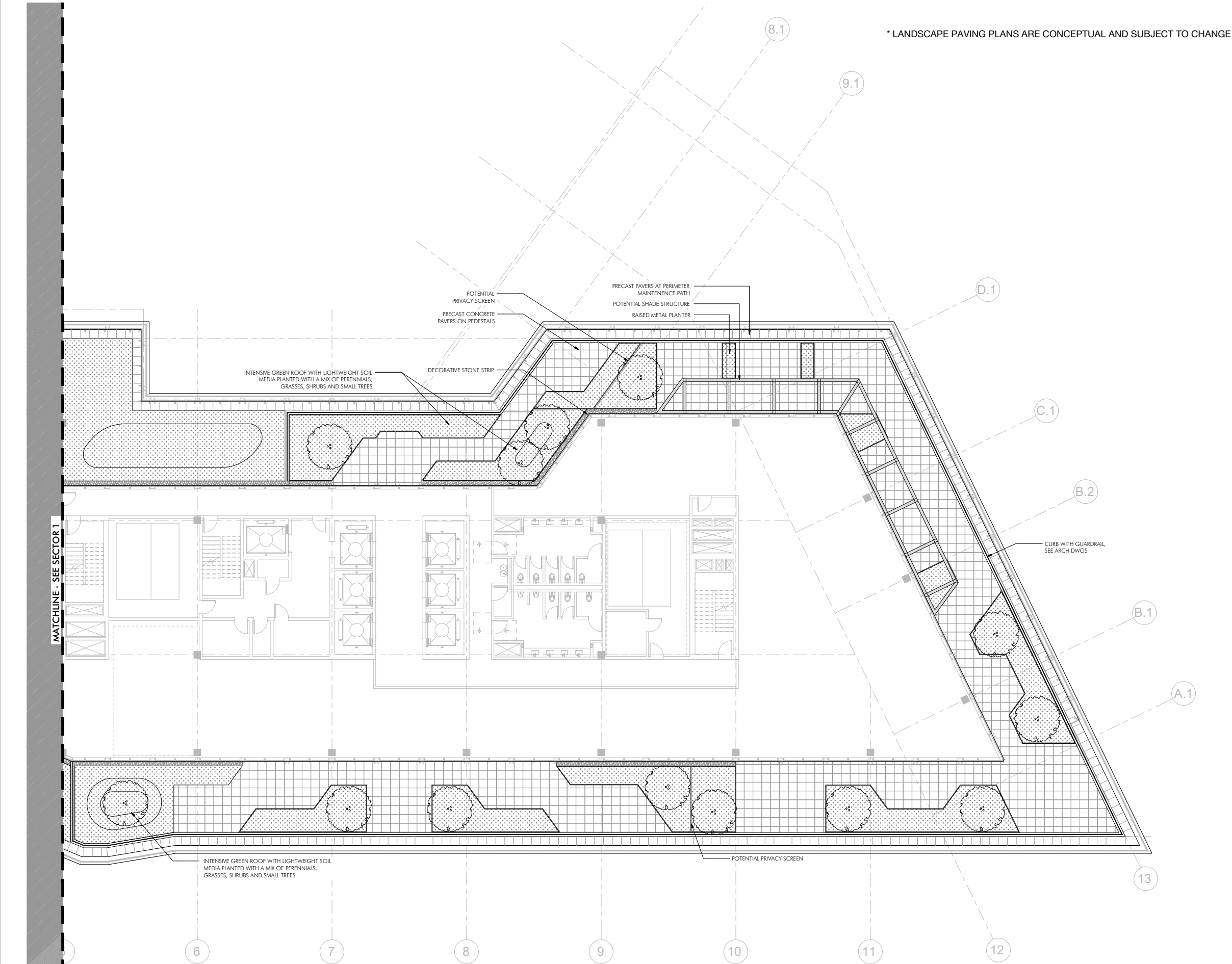
SHEET  
NUMBER:  
**VDR L105**

Copyright 2018 by Pickard Chilton Architects, Inc. All rights reserved.



**01 LANDSCAPE LAYOUT PLAN - PH**  
1/8" = 1'-0"





\* LANDSCAPE PAVING PLANS ARE CONCEPTUAL AND SUBJECT TO CHANGE

**01 LANDSCAPE LAYOUT PLAN - PH**  
1/8"=1'-0"



PICKARD CHILTON

**2100 M STREET NW**  
2100 M St. NW  
Washington, D.C. 20037

Owner  
**BXP**  
2200 Pennsylvania Ave NW  
Washington, DC 20037  
tel. 202.585.0800  
www.bxp.com

Design Consultant  
**Pickard Chilton**  
980 Chapel Street  
New Haven, Connecticut 06510  
tel. 203.786.8600  
www.pickardchilton.com

Architect of Record  
**Kendall/Heaton Associates**  
3050 Post Oak Boulevard, Suite 1000  
Houston, Texas 77002  
tel. 713.877.1192  
www.kendall-heaton.com

Landscape Architect  
**ParkerRodriguez**  
211 N Union Street, Suite 320  
Alexandria, Virginia 22314  
tel. 703.548.5010  
www.parkerrodriguez.com

Structural Engineer  
**Thornton Tomasetti**  
1330 Connecticut Avenue NW, Suite 300  
Washington, D.C. 20036  
tel. 202.580.6300  
www.thorntontomasetti.com

Mechanical and Electrical Engineer  
**GHT**  
1110 North Glebe Road, Suite 300  
Arlington, Virginia 22201  
tel. 703.243.1200  
www.ghtid.com

Civil Engineer  
**Wiles Mensch**  
100 M Street SE, #320  
Washington, D.C. 20003  
tel. 202.638.4040  
www.wm-dc.com

Transportation Consultant  
**Wells + Associates**  
650 Massachusetts Avenue NW, Suite 600  
Washington, D.C. 20001  
tel. 202.978.5222  
www.wellsandassociates.com

Vertical Transportation  
**VDA**  
120 Eagle Rock Avenue, Suite 310  
East Hanover, New Jersey 07936  
tel. 973.994.9220  
www.vdassoc.com

REVISIONS

05.13.2026	VDR SUBMISSION

**VDR Submission**  
This drawing is not for construction or bidding purposes. Pickard Chilton Architects, Inc. has prepared this drawing solely to communicate architectural design intent. Pickard Chilton Architects, Inc. is not the Architect of Record and therefore is not responsible for preparing construction documents or for technical, legal, or construction-related matters. Pickard Chilton Architects, Inc. is not responsible for nor does it make any representation concerning dimensional accuracy of this drawing or coordination of this drawing with documents prepared by other disciplines.

**NOT FOR CONSTRUCTION**

**LANDSCAPE LAYOUT PLAN - PH**

PROJECT: 2530  
DATE: May 2026  
SCALE: As Noted

SHEET NUMBER:  
**VDR L106**

Copyright 2018 by Pickard Chilton Architects, Inc. All rights reserved.

\* LANDSCAPE PAVING PLANS ARE CONCEPTUAL AND SUBJECT TO CHANGE

PICKARD CHILTON

2100 M STREET NW  
2100 M St. NW  
Washington, D.C. 20037

Owner  
**BXP**  
2200 Pennsylvania Ave NW  
Washington, DC 20037  
tel. 202.585.0800  
www.bxp.com

Design Consultant  
**Pickard Chilton**  
980 Chapel Street  
New Haven, Connecticut 06510  
tel. 203.786-8600  
www.pickarchilton.com

Architect of Record  
**Kendall/Heaton Associates**  
3050 Post Oak Boulevard, Suite 1000  
Houston, Texas 77002  
tel. 713.877.1192  
www.kendall-heaton.com

Landscape Architect  
**ParkerRodriguez**  
211 N Union Street, Suite 320  
Alexandria, Virginia 22314  
tel. 703.548.5010  
www.parkerrodriguez.com

Structural Engineer  
**Thornton Tomasetti**  
1330 Connecticut Avenue NW, Suite 300  
Washington, D.C. 20036  
tel. 202.580.6300  
www.thorntontomasetti.com

Mechanical and Electrical Engineer  
**GHT**  
1110 North Glebe Road, Suite 300  
Arlington, Virginia 22201  
tel. 703.243.1200  
www.ghtinc.com

Civil Engineer  
**Wiles Mensch**  
100 M Street SE, #320  
Washington, D.C. 20003  
tel. 202.638-4040  
www.wm-dc.com

Transportation Consultant  
**Wells + Associates**  
650 Massachusetts Avenue NW, Suite 600  
Washington, D.C. 20001  
tel. 202.978.5222  
www.wellsandassociates.com

Vertical Transportation  
**VDA**  
120 Eagle Rock Avenue, Suite 310  
East Hanover, New Jersey 07936  
tel. 973.994.9220  
www.vdasoc.com

REVISIONS

05.13.2026 VDR SUBMISSION

VDR Submission

This drawing is not for construction or bidding purposes. Pickard Chilton Architects, Inc. has prepared this drawing solely to communicate architectural design intent. Pickard Chilton Architects, Inc. is not the Architect of Record and therefore is not responsible for preparing construction documents or for technical, legal, or construction-related matters. Pickard Chilton Architects, Inc. is not responsible for nor does it make any representation concerning dimensional accuracy of this drawing or coordination of this drawing with documents prepared by other disciplines.

NOT FOR CONSTRUCTION

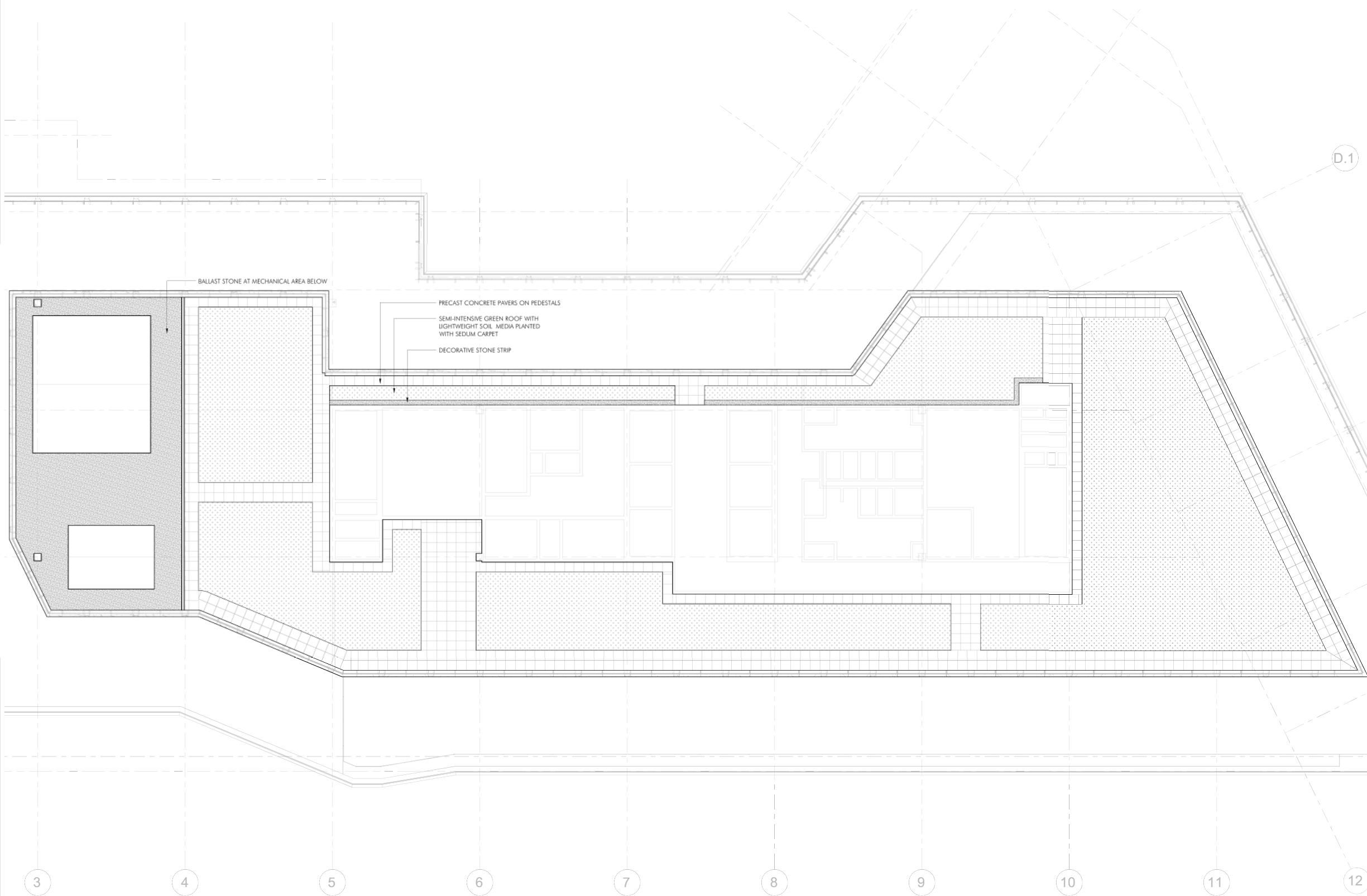
LANDSCAPE LAYOUT PLAN - ROOF

PROJECT: 2530  
DATE: May 2026  
SCALE: As Noted

SHEET NUMBER:  
**VDR L107**

Copyright 2018 by Pickard Chilton Architects, Inc. All rights reserved.

D.1



01 LANDSCAPE LAYOUT PLAN - ROOF  
1/8"=1'-0"

