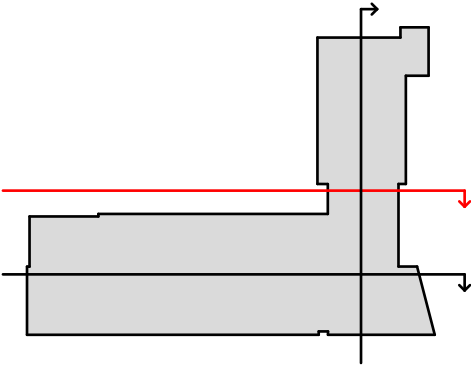
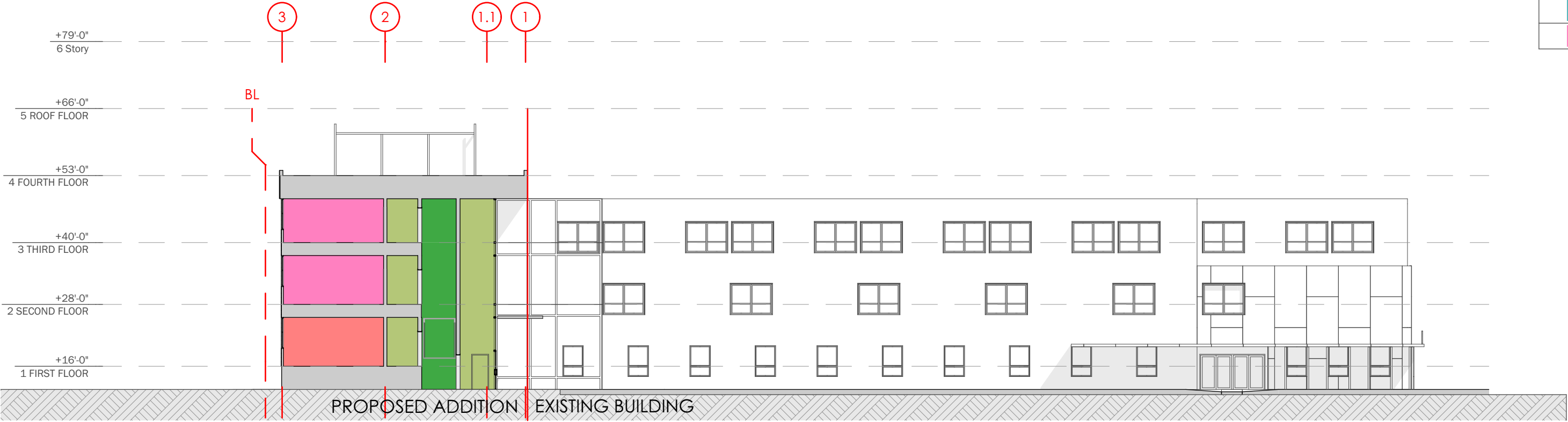


LEGEND	
<div></div>	CAFETERIA
<div></div>	CIRCULATION
<div></div>	CLASSROOMS
<div></div>	GYMNASIUM
<div></div>	LIBRARY
<div></div>	OFFICE
<div></div>	SERVICE
<div></div>	STAIRS AND ELEVATOR
<div></div>	STORAGES
<div></div>	TOILETS
<div></div>	UTILITIES



**CEDAR TREE ACADEMY PUBLIC CHARTER SCHOOL**  
701 HOWARD ROAD SE, WASHINGTON DC 20020

**A2 Design Inc**  
1440 N. Edgewood Street, Arlington, VA 22201  
703.448.6700

**Wiles Mensch**  
510 8th Street SE, Washington, DC 20003  
202.552.0248

**Symmetra Design**  
727 15th Street, NW 12th Fl Washington DC 20005  
202.370.6000

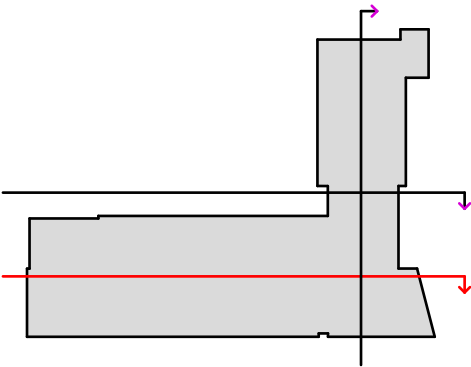
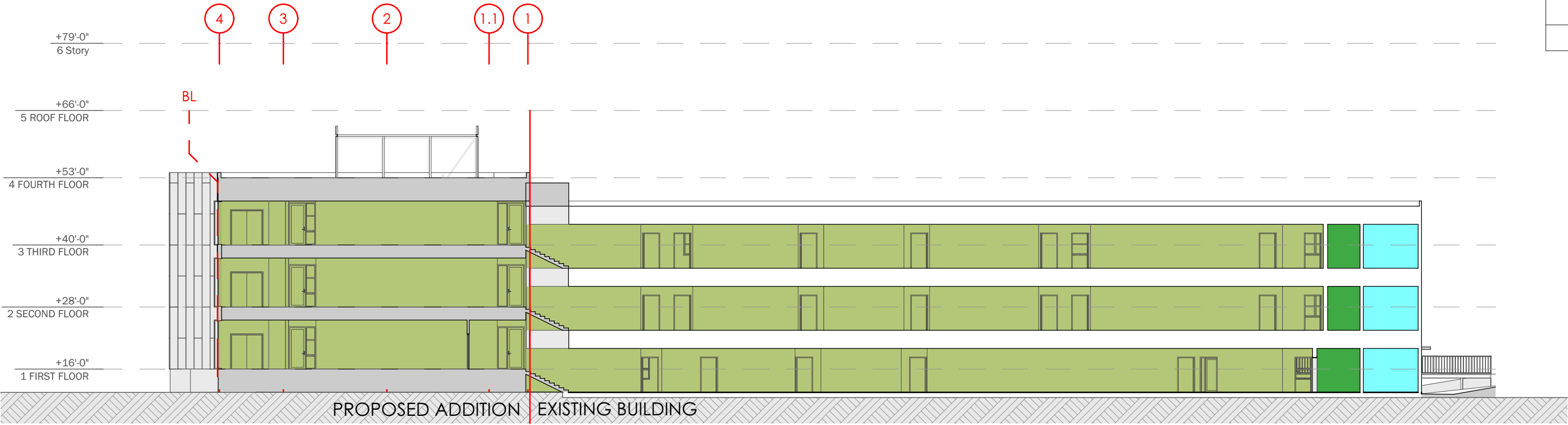
**Cozen O'Conor**  
2001 M Street NW, Ste 500, Washington DC 20036  
202.747.0769

**BUILDING SECTION**  
scale: 1" = 20'

**A-017**

ZONING COMMISSION  
District of Columbia  
CASE NO. 24-23A  
EXHIBIT NO. 3G4

LEGEND	
<div></div>	CAFETERIA
<div></div>	CIRCULATION
<div></div>	CLASSROOMS
<div></div>	GYMNASIUM
<div></div>	LIBRARY
<div></div>	OFFICE
<div></div>	SERVICE
<div></div>	STAIRS AND ELEVATOR
<div></div>	STORAGES
<div></div>	TOILETS
<div></div>	UTILITIES



**CEDAR TREE ACADEMY PUBLIC CHARTER SCHOOL**  
701 HOWARD ROAD SE, WASHINGTON DC 20020

**A2 Design Inc**  
1440 N. Edgewood Street, Arlington, VA 22201  
703.448.6700

**Wiles Mensch**  
510 8th Street SE, Washington, DC 20003  
202.552.0248

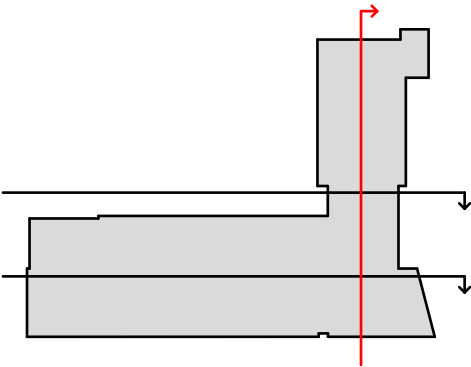
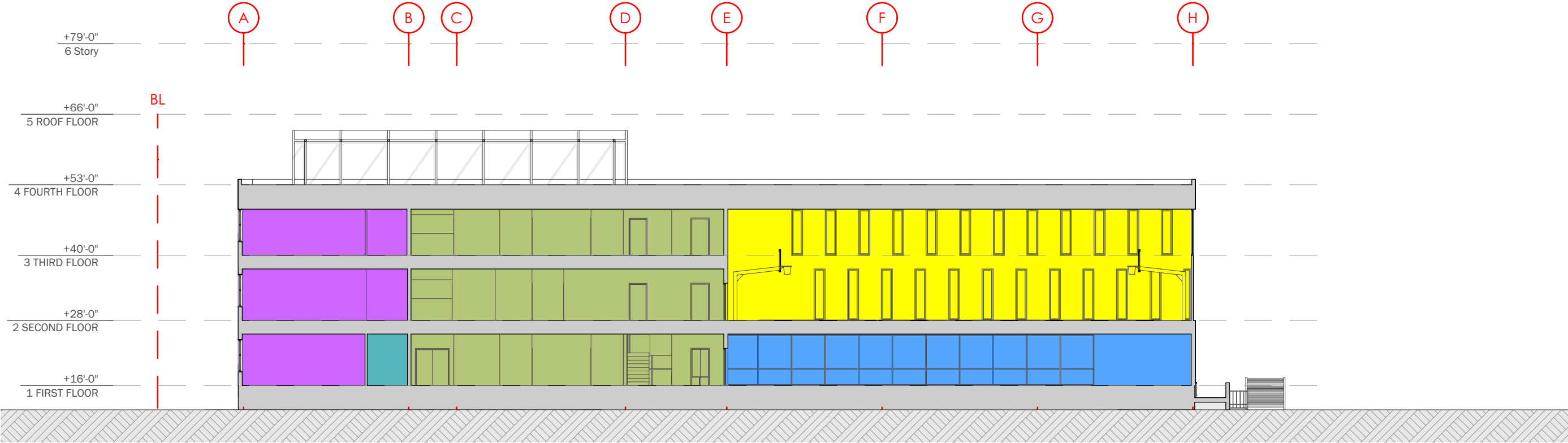
**Symmetra Design**  
727 15th Street, NW 12th Fl Washington DC 20005  
202.370.6000

**Cozen O'Connor**  
2001 M Street NW, Ste 500, Washington DC 20036  
202.747.0769

**BUILDING SECTION**  
scale: 1" = 20'

**A-018**

LEGEND	
<div></div>	CAFETERIA
<div></div>	CIRCULATION
<div></div>	CLASSROOMS
<div></div>	GYMNASIUM
<div></div>	LIBRARY
<div></div>	OFFICE
<div></div>	SERVICE
<div></div>	STAIRS AND ELEVATOR
<div></div>	STORAGES
<div></div>	TOILETS
<div></div>	UTILITIES



**CEDAR TREE ACADEMY PUBLIC CHARTER SCHOOL**  
701 HOWARD ROAD SE, WASHINGTON DC 20020

**A2 Design Inc**  
1440 N. Edgewood Street, Arlington, VA 22201  
703.448.6700

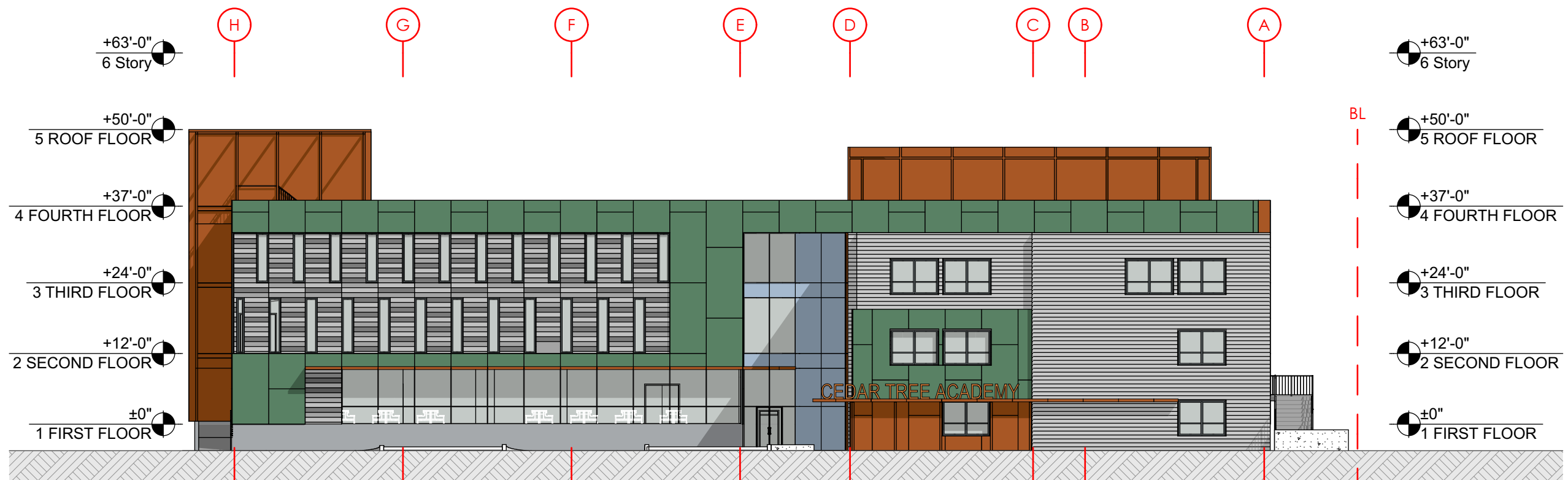
**Wiles Mensch**  
510 8th Street SE, Washington, DC 20003  
202.552.0248

**Symmetra Design**  
727 15th Street, NW 12th Fl Washington DC 20005  
202.370.6000

**Cozen O'Connor**  
2001 M Street NW, Ste 500, Washington DC 20036  
202.747.0769

**BUILDING SECTION**  
scale: 1" = 20'

**A-019**



# **CEDAR TREE ACADEMY PUBLIC CHARTER SCHOOL** 701 HOWARD ROAD SE, WASHINGTON DC 20020

**A2 Design Inc**  
 1440 N. Edgewood Street, Arlington, VA 22201  
 703.448.6700

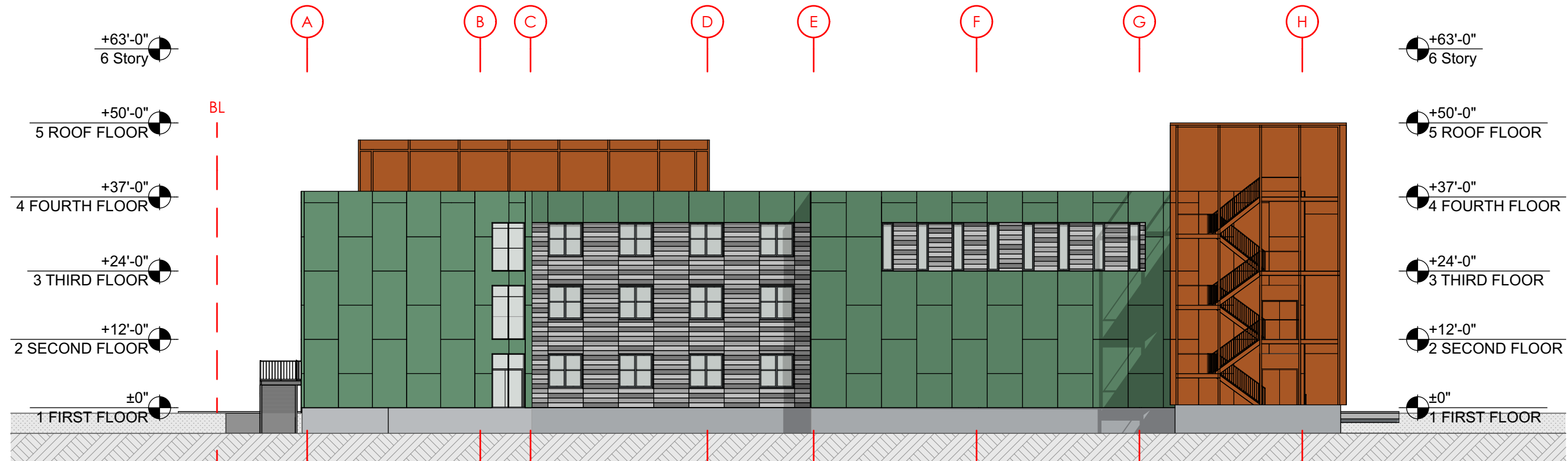
**Wiles Mensch**  
 510 8th Street SE, Washington, DC 20003  
 202.552.0248

**Symmetra Design**  
 727 15th Street, NW 12th Fl Washington DC 20005  
 202.370.6000

**Cozen O'Conor**  
 2001 M Street NW, Ste 500, Washington DC 20036  
 202.747.0769

## **NORTH BUILDING ELEVATION** scale: 1" = 20'

A-020



**CEDAR TREE ACADEMY PUBLIC CHARTER SCHOOL**  
 701 HOWARD ROAD SE, WASHINGTON DC 20020

**A2 Design Inc**  
 1440 N. Edgewood Street, Arlington, VA 22201  
 703.448.6700

**Wiles Mensch**  
 510 8th Street SE, Washington, DC 20003  
 202.552.0248

**Symmetra Design**  
 727 15th Street, NW 12th Fl Washington DC 20005  
 202.370.6000

**Cozen O'Cononor**  
 2001 M Street NW, Ste 500, Washington DC 20036  
 202.747.0769

**SOUTH BUILDING ELEVATION**  
 scale: 1" = 20'

**A-021**



**CEDAR TREE ACADEMY PUBLIC CHARTER SCHOOL**  
701 HOWARD ROAD SE, WASHINGTON DC 20020

**A2 Design Inc**  
1440 N. Edgewood Street, Arlington, VA 22201  
703.448.6700

**Wiles Mensch**  
510 8th Street SE, Washington, DC 20003  
202.552.0248

**Symmetra Design**  
727 15th Street, NW 12th Fl Washington DC 20005  
202.370.6000

**Cozen O'Connor**  
2001 M Street NW, Ste 500, Washington DC 20036  
202.747.0769

**EAST BUILDING ELEVATION**  
scale: 1" = 20'

**A-022**



**CEDAR TREE ACADEMY PUBLIC CHARTER SCHOOL**  
701 HOWARD ROAD SE, WASHINGTON DC 20020

**A2 Design Inc**  
1440 N. Edgewood Street, Arlington, VA 22201  
703.448.6700

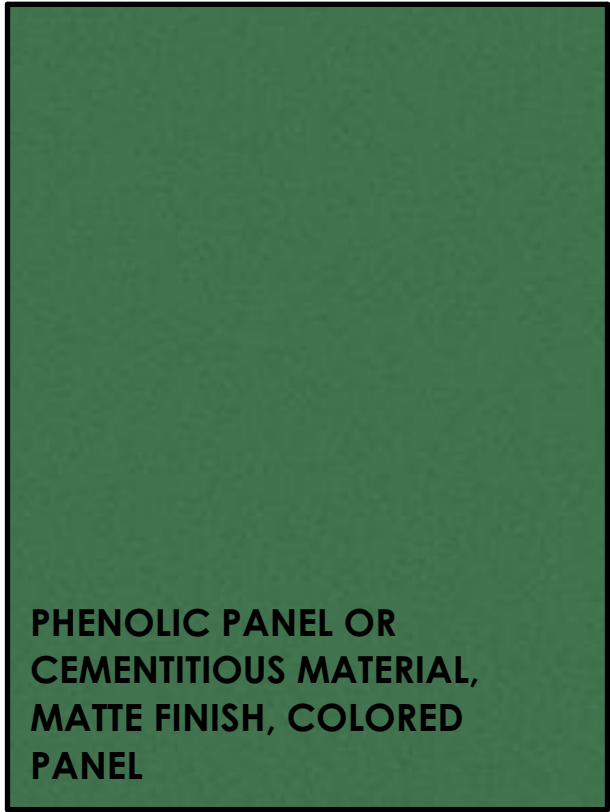
**Wiles Mensch**  
510 8th Street SE, Washington, DC 20003  
202.552.0248

**Symmetra Design**  
727 15th Street, NW 12th Fl Washington DC 20005  
202.370.6000

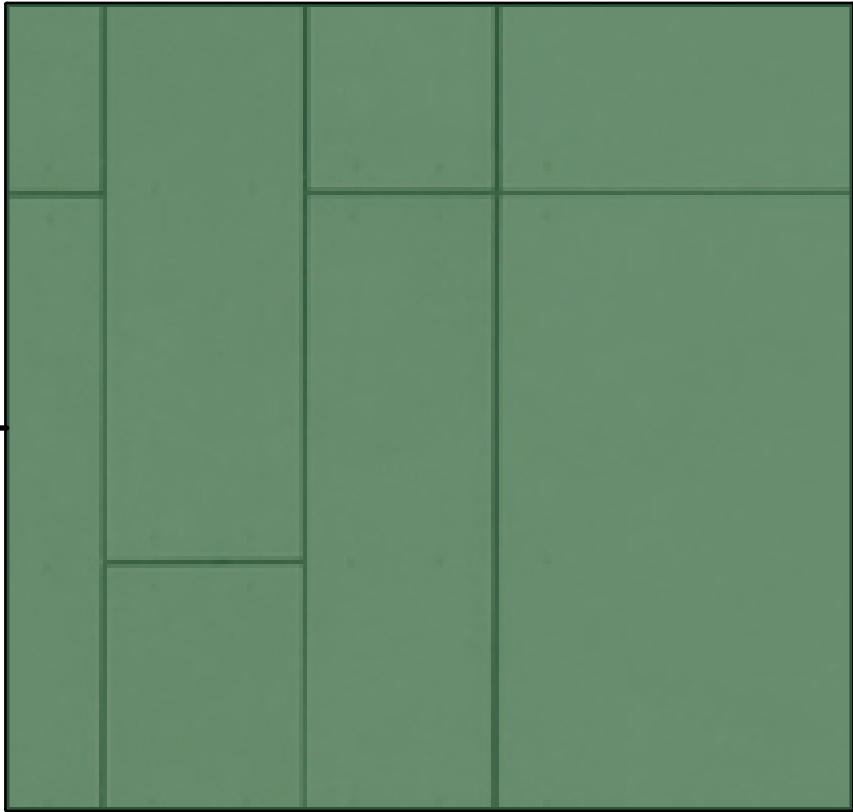
**Cozen O'Cononor**  
2001 M Street NW, Ste 500, Washington DC 20036  
202.747.0769

**WEST BUILDING ELEVATION**  
scale: 1" = 20'

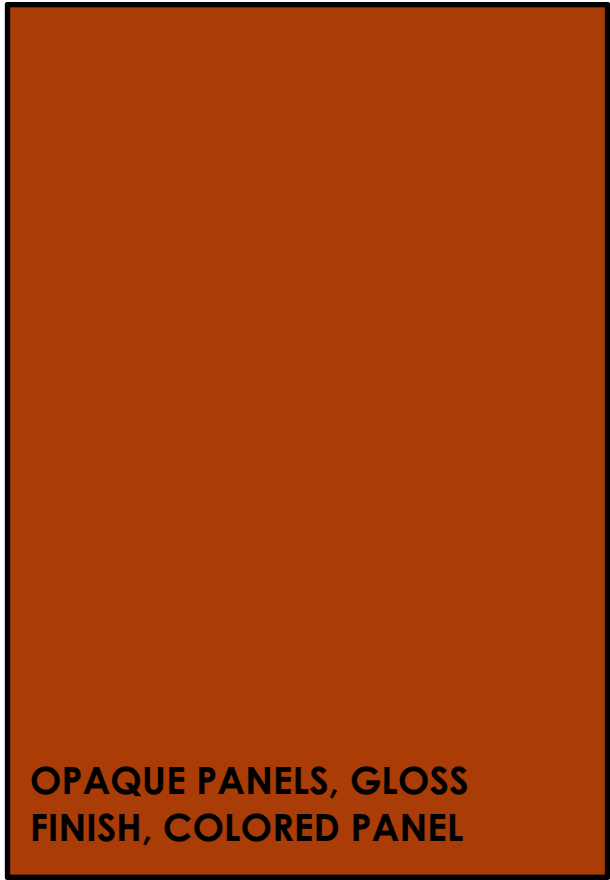
A-023



PHENOLIC PANEL OR  
CEMENTITIOUS MATERIAL,  
MATTE FINISH, COLORED  
PANEL



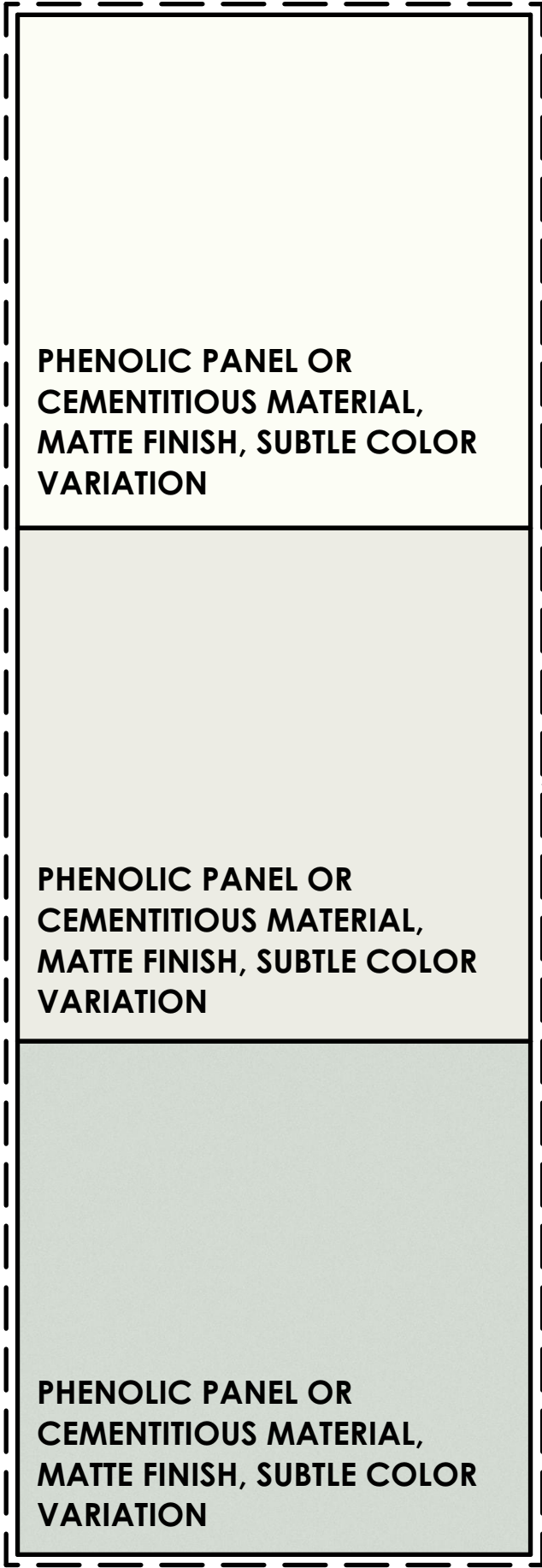
PHENOLIC PANEL OR CEMENTITIOUS MATERIAL  
W/ REVEALS



OPAQUE PANELS, GLOSS  
FINISH, COLORED PANEL



CORRUGATED OR PERFORATED PANEL



PHENOLIC PANEL OR  
CEMENTITIOUS MATERIAL,  
MATTE FINISH, SUBTLE COLOR  
VARIATION

PHENOLIC PANEL OR  
CEMENTITIOUS MATERIAL,  
MATTE FINISH, SUBTLE COLOR  
VARIATION

PHENOLIC PANEL OR  
CEMENTITIOUS MATERIAL,  
MATTE FINISH, SUBTLE COLOR  
VARIATION



VARIGATED TEXTURE + COLORED PANELS



VARIGATED TEXTURE + COLORED PANELS



**CEDAR TREE ACADEMY PUBLIC CHARTER SCHOOL**  
701 HOWARD ROAD SE, WASHINGTON DC 20020

**A2 Design Inc**  
1440 N. Edgewood Street, Arlington, VA 22201  
703.448.6700

**Wiles Mensch**  
510 8th Street SE, Washington, DC 20003  
202.552.0248

**Symmetra Design**  
727 15th Street, NW 12th Fl Washington DC 20005  
202.370.6000

**Cozen O'Conor**  
2001 M Street NW, Ste 500, Washington DC 20036  
202.747.0769

**MATERIALS**  
scale: 1:0.67, 1' = 1'-0", 1:3.33, 1:2.19