

LEGEND

1971

**Recommended Map Amendment**  
Proposed map amendment recommended for adoption by the Office of Planning. Recommended amendments may be modified from the original proposal in extent or classification.

**Residential Land Use Categories**

**Low Density Residential**  
Defines neighborhoods generally, but not exclusively, suited for single family detached and semi-detached housing units with front, back, and side yards.

**Moderate Density Residential**  
Defines neighborhoods generally, but not exclusively, suited for row houses as well as low-rise garden apartment complexes. The designation also applies to areas characterized by a mix of single-family homes, two- to four-unit buildings, row houses, and low-rise apartment buildings. In some neighborhoods with this designation, there may also be existing multi-story apartments, many built decades ago when the areas were zoned for more dense uses (or were not zoned at all).

**Medium Density Residential**  
Defines neighborhoods or areas generally, but not exclusively, suited for mid-rise apartment buildings. The Medium Density Residential designation also may apply to taller residential buildings surrounded by large areas of permanent open space. Pockets of low and moderate density housing may exist within these areas.

**High Density Residential**  
Defines neighborhoods and corridors generally, but not exclusively, suited for high-rise apartment buildings. Pockets of less dense housing may exist within these areas.

**Commercial Land Use Categories**

**Low Density Commercial**  
Defines shopping and service areas that are generally lower in scale and intensity. Retail, office, and service businesses are the predominant uses. Areas with this designation range from small business districts that draw primarily from the surrounding neighborhoods to larger business districts that draw from a broader market area.

**Moderate Density Commercial**  
Defines shopping and service areas that are somewhat greater in scale and intensity than the Low-Density Commercial areas. Retail, office, and service businesses are the predominant uses. Areas with this designation range from small business districts that draw primarily from the surrounding neighborhoods to larger business districts uses that draw from a broader market area. Buildings are larger and/or taller than those in Low Density Commercial areas.

**Medium Density Commercial**  
Defines shopping and service areas that are somewhat greater in scale and intensity than the Moderate Density Commercial areas. Retail, office, and service businesses are the predominant uses, although residential uses are common. Areas with this designation generally draw from a citywide market area. Buildings are larger and/or taller than those in Moderate Density Commercial areas.

**High Density Commercial**  
Defines the central employment district, other major office centers, and other commercial areas with the greatest scale and intensity of use in the District.  
  
Residential is also a permitted use in all commercial categories and typically required to maximize density in the low, moderate and medium density commercial land use categories

**Production, Distribution, and Repair**  
Defines areas characterized by manufacturing, warehousing, wholesale and distribution centers, transportation services, food services, printers and publishers, tourism support services, and commercial, municipal, and utility activities which may require substantial buffering from housing and other noise-, air-pollution and light-sensitive uses. This category is also used to denote railroad rights-of-way, switching and maintenance yards, bus garages, and uses related to the movement of freight, such as truck terminals.

**Public and Institutional Land Use Categories**

**Federal**  
Includes land and facilities owned, occupied and used by the federal government, excluding parks and open space. Uses include military bases, federal government buildings, the International Chancery Center, federal hospitals, museums, and similar federal government activities. The "Federal" category generally denotes federal ownership and use. Land with this designation is generally not subject to zoning.

**Local Public Facilities**  
Includes land and facilities occupied and used by the District of Columbia government or other local government agencies (such as WMATA), excluding parks and open space. Uses include public schools including charter schools, public hospitals, government office complexes, and similar local government activities. Other non-governmental facilities may be co-located on site. While included in this category, local public facilities smaller than one acre – including some of the District's libraries, police and fire stations, and similar uses – may not appear on the map due to scale.

**Institutional**  
Includes land and facilities occupied and used by colleges and universities, large private schools, hospitals, religious organizations, and similar institutions. While included in this category, smaller institutional uses such as churches are generally not mapped, unless they are located on sites that are several acres in size.

**Parks, Recreation, and Open Space**  
Includes the federal and District park systems, including the National Parks, such as the National Mall; the circles and squares of the L'Enfant city and District neighborhoods; settings for significant commemorative works, certain federal buildings such as the White House and the U.S. Capitol grounds, and museums; and District-operated parks and associated recreation centers. It also includes permanent open space uses such as cemeteries, open space associated with utilities such as the Dalecarlia and McMillan Reservoirs, and open space along highways such as Sullyland Parkway. This category includes a mix of passive open space (for resource conservation and habitat protection) and active open space (for recreation). While included in this category, parks smaller than one acre – including many of the triangles along the city's avenues – may not appear on the map due to scale.

**Mixed Land Use**

Indicates areas where the mixing of two or more land uses is especially encouraged. The particular combination of uses desired in a given area is depicted in striped patterns, with stripe colors corresponding to the specific land use categories. The general density and intensity of development within a given Mixed Use area is determined by the specific mix of uses shown. If the desired outcome is to emphasize one use over the other (for example, ground-floor retail with three stories of housing above), the map may note the dominant use by showing it at a slightly higher density than the other use in the mix. The Comprehensive Plan Area Elements may also provide detail on the specific mix of uses envisioned.

**Water Bodies**

**Metro Stations**

**CEDAR TREE ACADEMY PUBLIC CHARTER SCHOOL**  
701 HOWARD ROAD SE, WASHINGTON DC 20020

**A2 Design Inc**  
1440 N. Edgewood Street, Arlington, VA 22101  
703.448.6700

**Wiles Mensch**  
510 8th Street SE, Washington, DC 20003  
202.552.0248

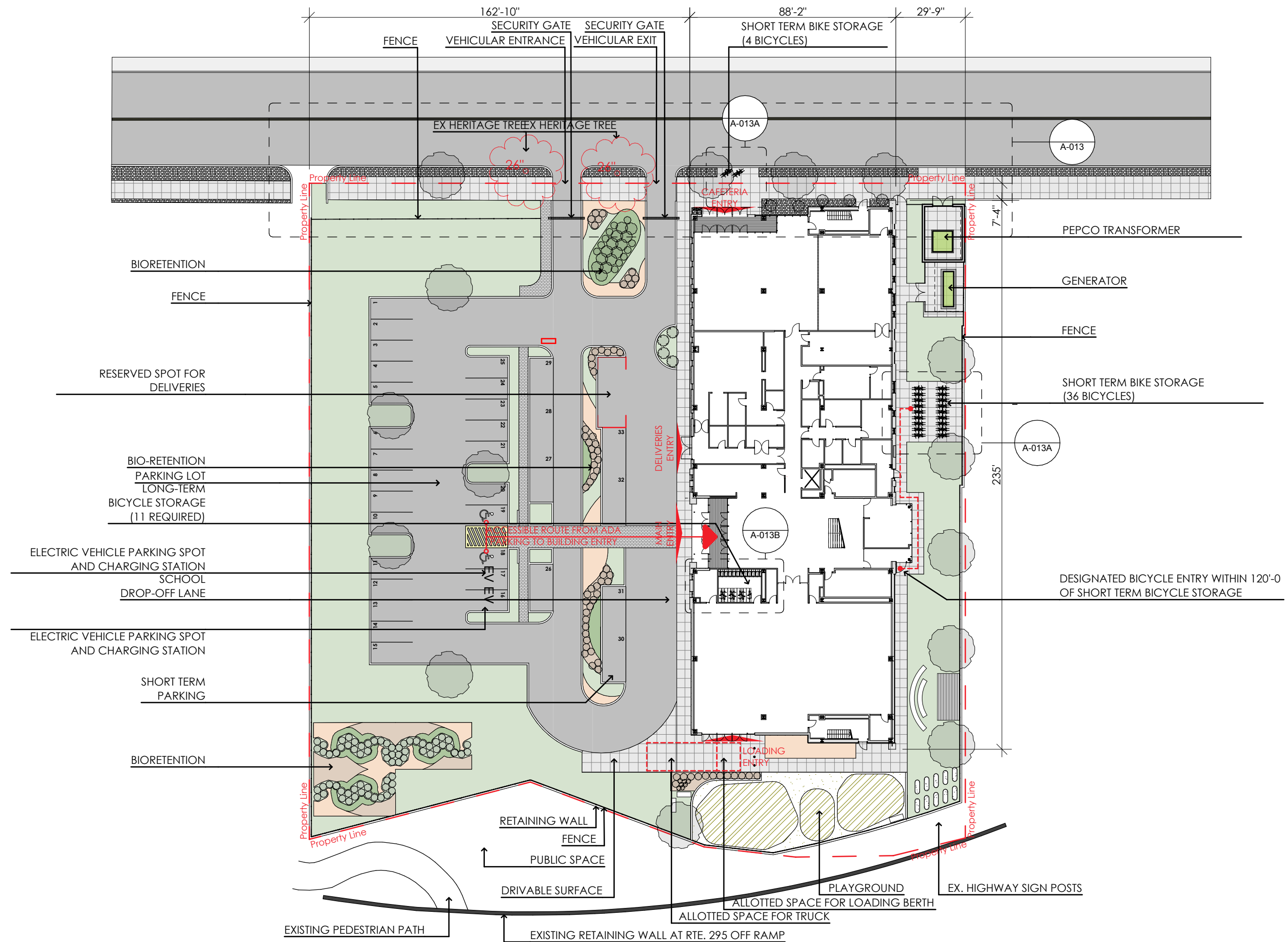
**Symmetra Design**  
727 15th Street, NW 12th Fl Washington DC 20005  
202.370.6000

**Cozen O'Cononor**  
2001 M Street NW, Ste 500, Washington DC 20036  
202.747.0769

**FUTURE LAND USE PLAN** | **A-008**

**ZONING COMMISSION**  
District of Columbia  
**CASE NO. 24-23A**  
**EXHIBIT NO. 3G2**





# CEDAR TREE ACADEMY PUBLIC CHARTER SCHOOL

701 HOWARD ROAD SE, WASHINGTON DC 20020

**A2 Design Inc**  
1440 N. Edgewood Street, Arlington, VA 22101  
703.448.6700

**Wiles Mensch**  
510 8th Street SE, Washington, DC 20003  
202.552.0248

**Symmetra Design**  
727 15th Street, NW 12th Fl Washington DC 20005  
202.370.6000

**Cozen O'Connor**  
2001 M Street NW, Ste 500, Washington DC 20036  
202.747.0769

## PREVIOUSLY APPROVED SITE PLAN

scale:

A-010.1





# **CEDAR TREE ACADEMY PUBLIC CHARTER SCHOOL**

701 HOWARD ROAD SE, WASHINGTON DC 20020

**A2 Design Inc**  
1440 N. Edgewood Street, Arlington, VA 22201  
703.448.6700

**Wiles Mensch**  
510 8th Street SE, Washington, DC 20003  
202.552.0248

**Symmetra Design**  
727 15th Street, NW 12th Fl Washington DC 20005  
202.370.6000

**Cozen O'Connor**  
2001 M Street NW, Ste 500, Washington DC 20036  
202.747.0769