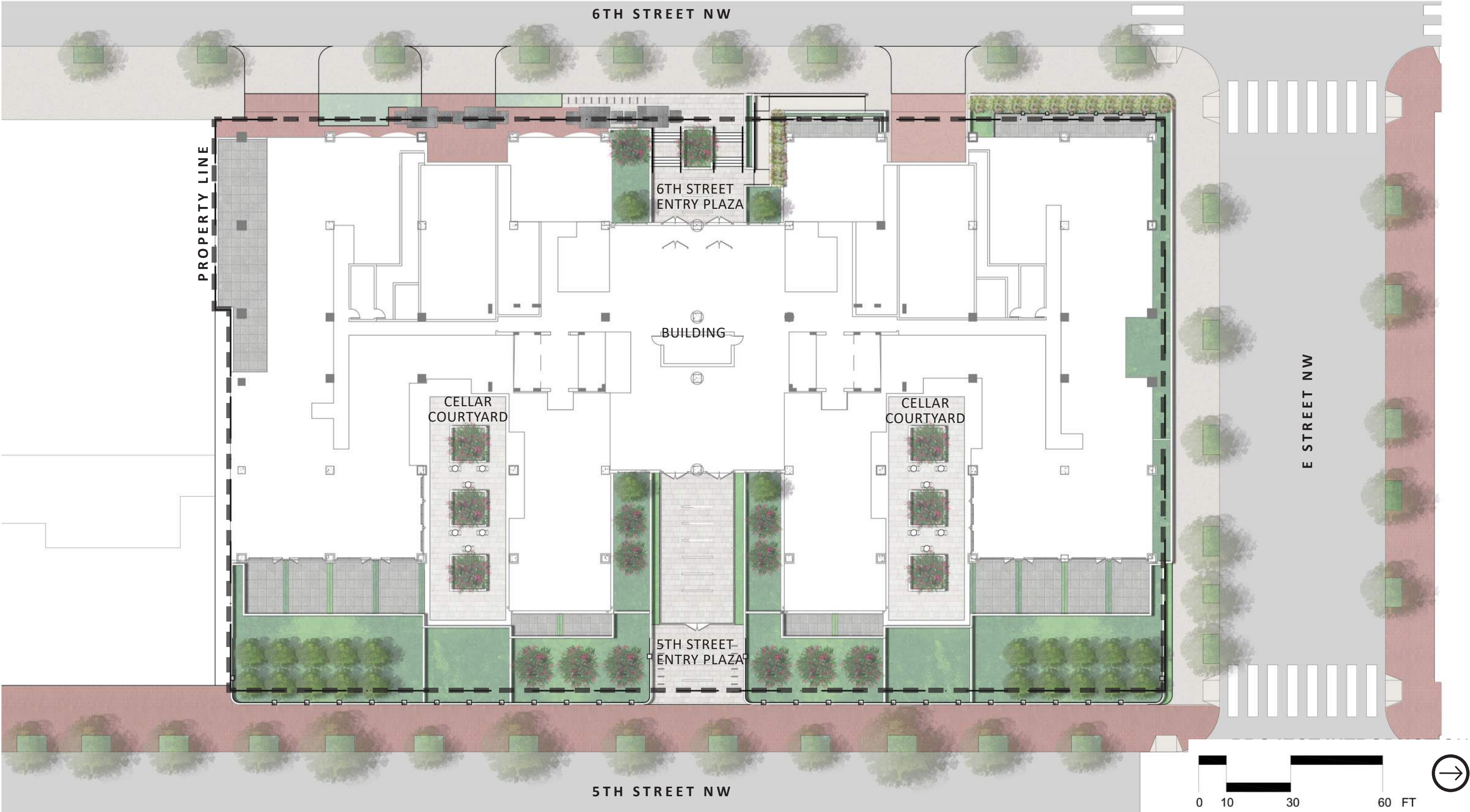


OVERALL SITE PLAN

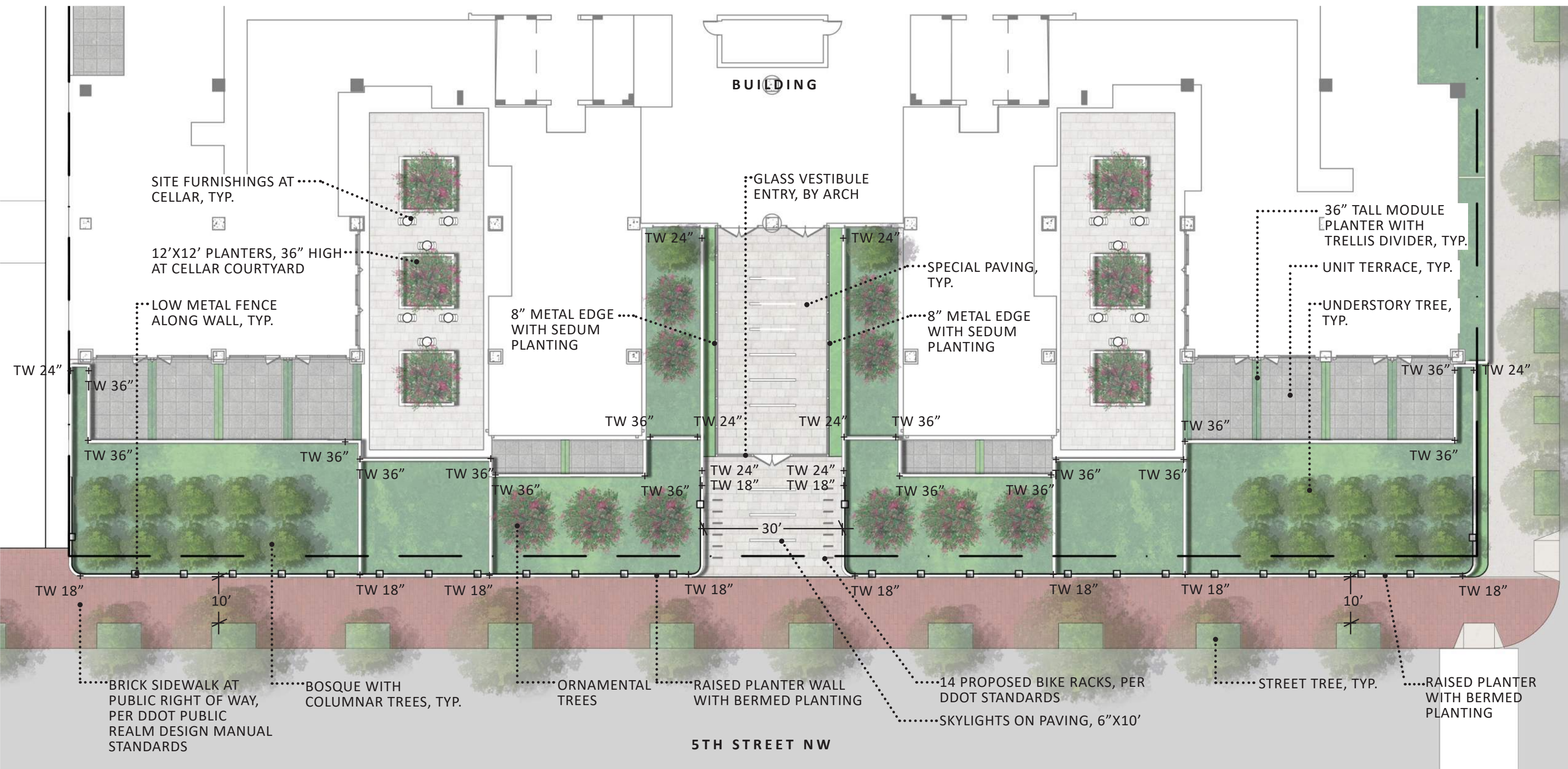


450 5TH STREET, NW

PUD APPLICATION

OVERALL SITE PLAN

ENLARGED MATERIALS PLAN  
5TH STREET NW STREETSCAPE

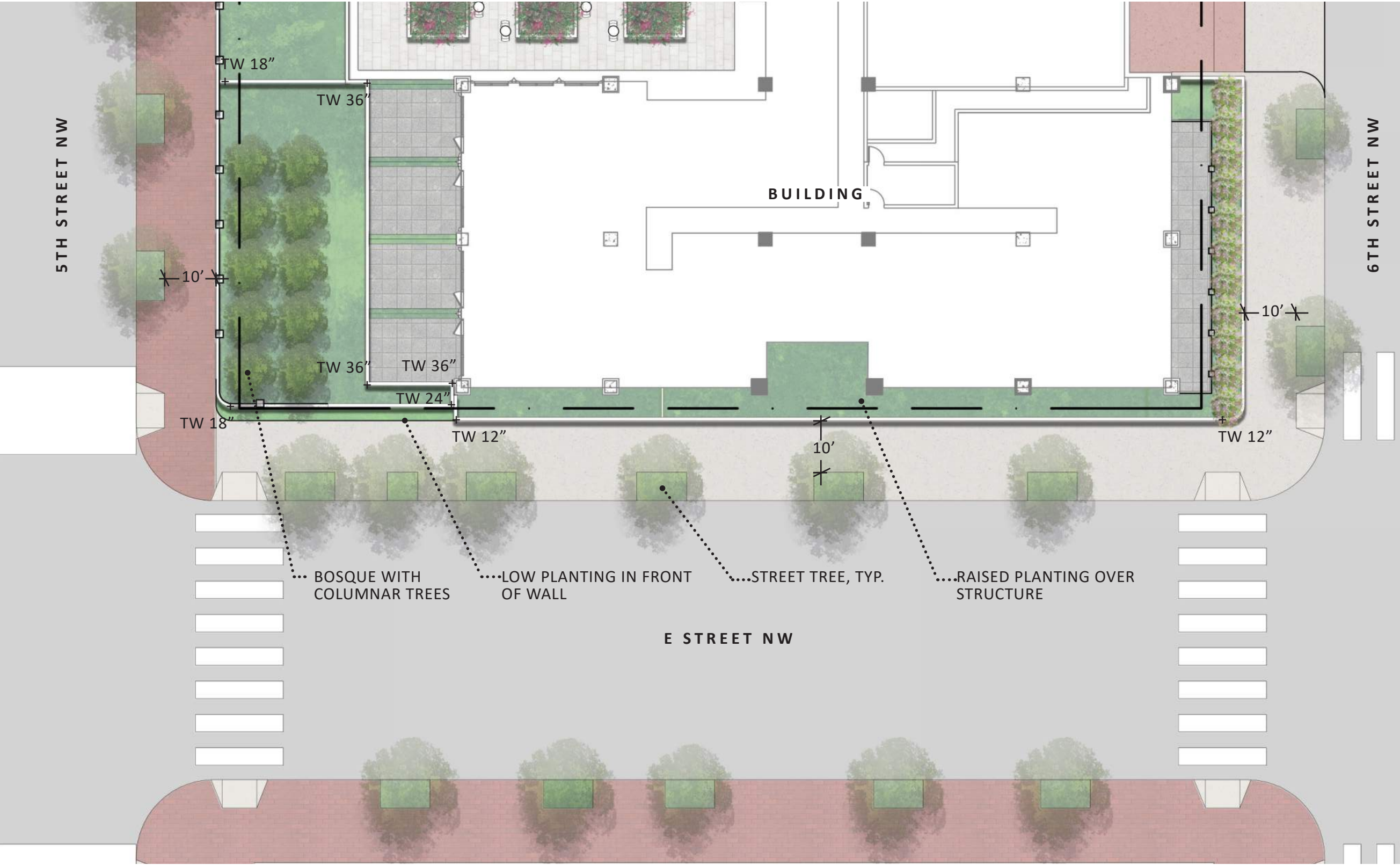


450 5TH STREET, NW

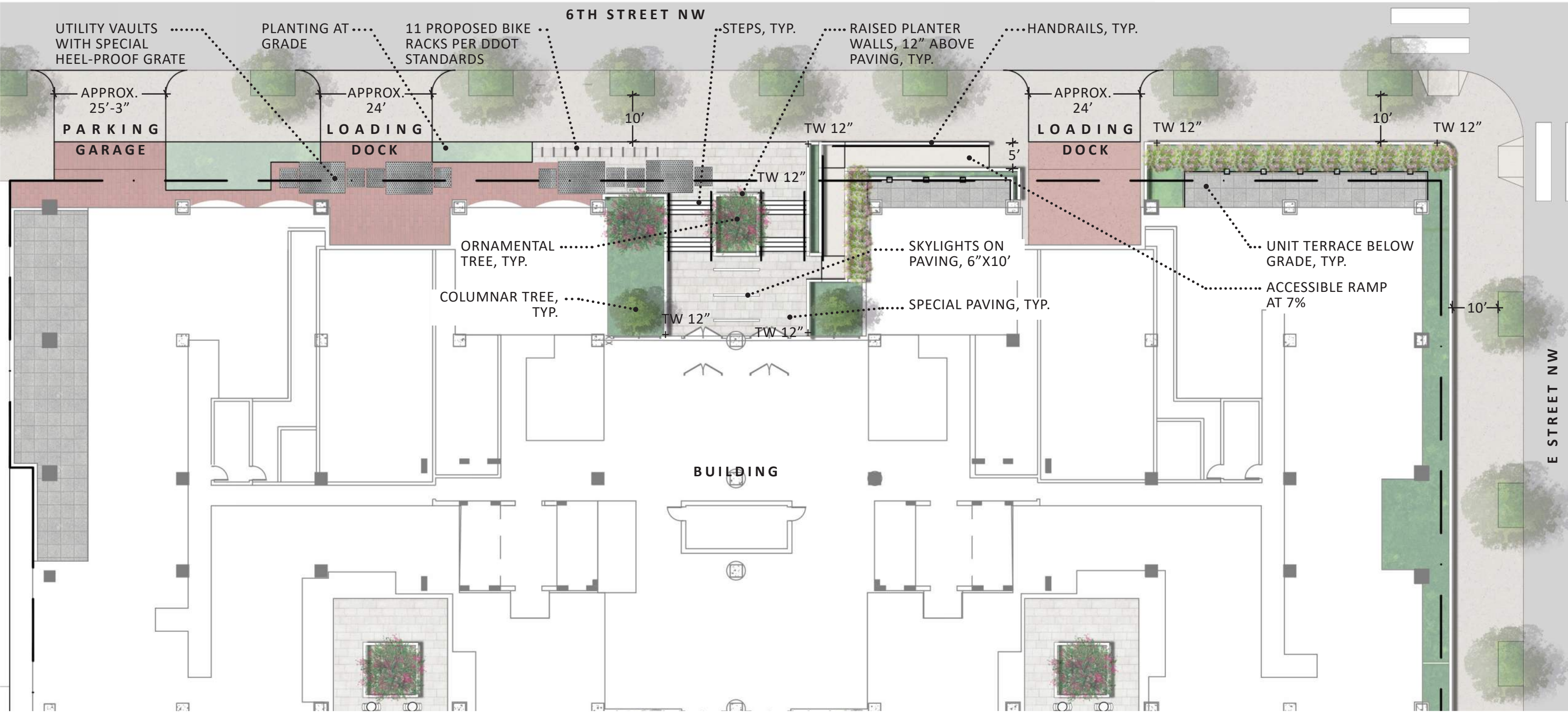
PUD APPLICATION

ENLARGED MATERIALS PLAN

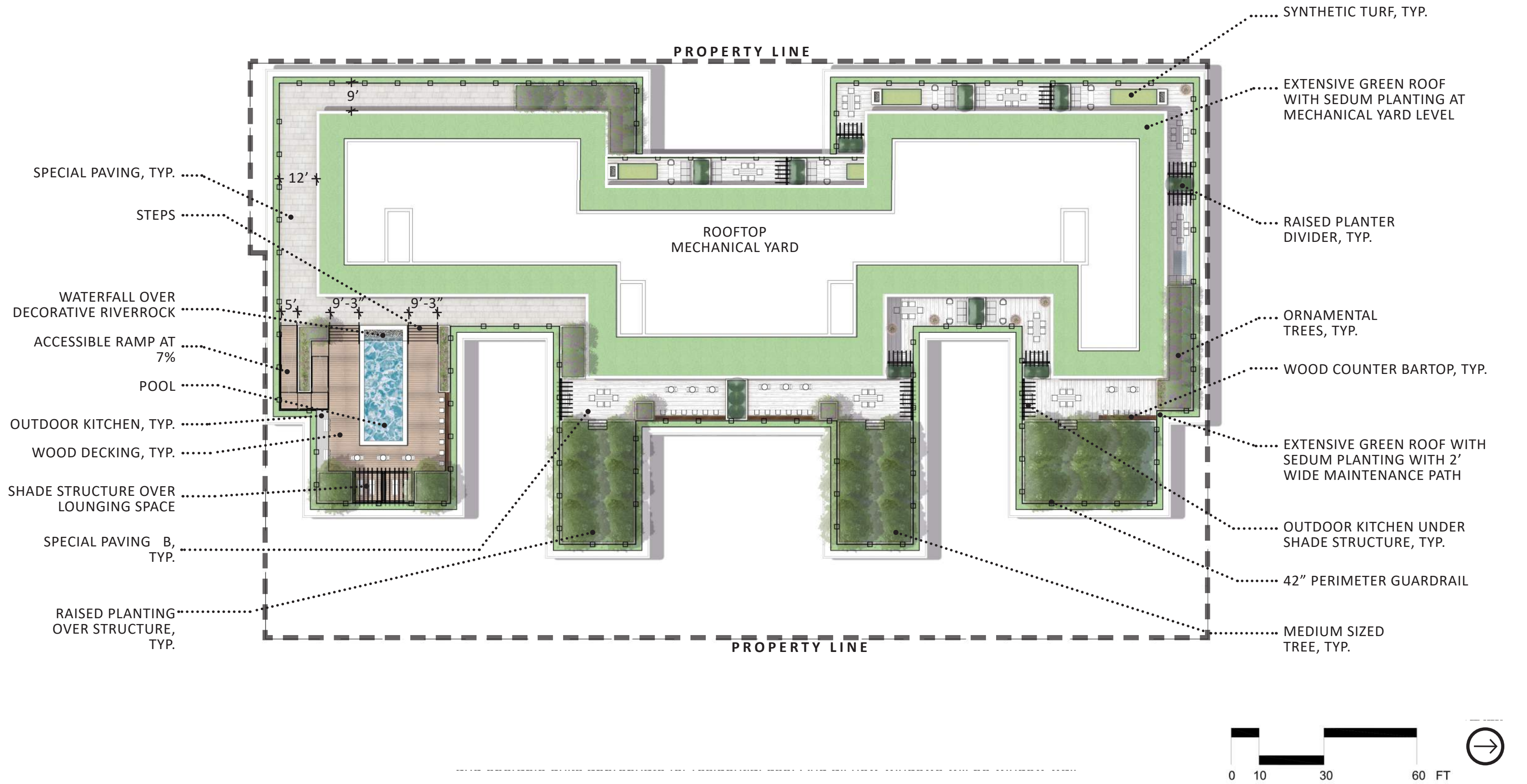
ENLARGED MATERIALS PLAN  
E STREET NW STREETSCAPE



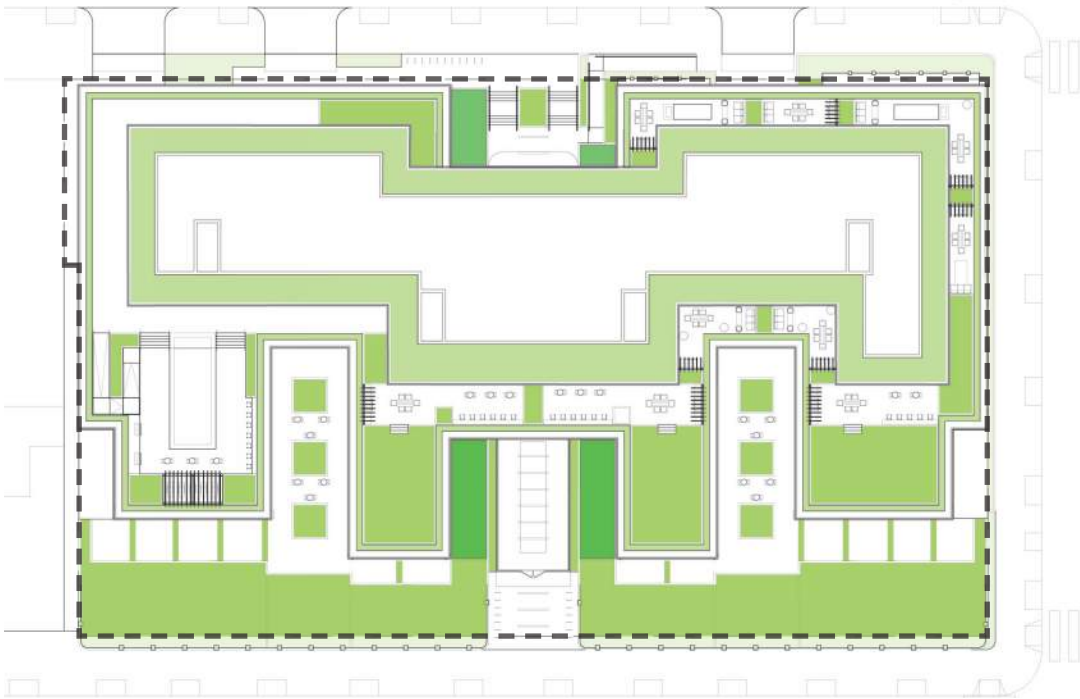
ENLARGED MATERIALS PLAN  
6TH STREET NW STREETSCAPE



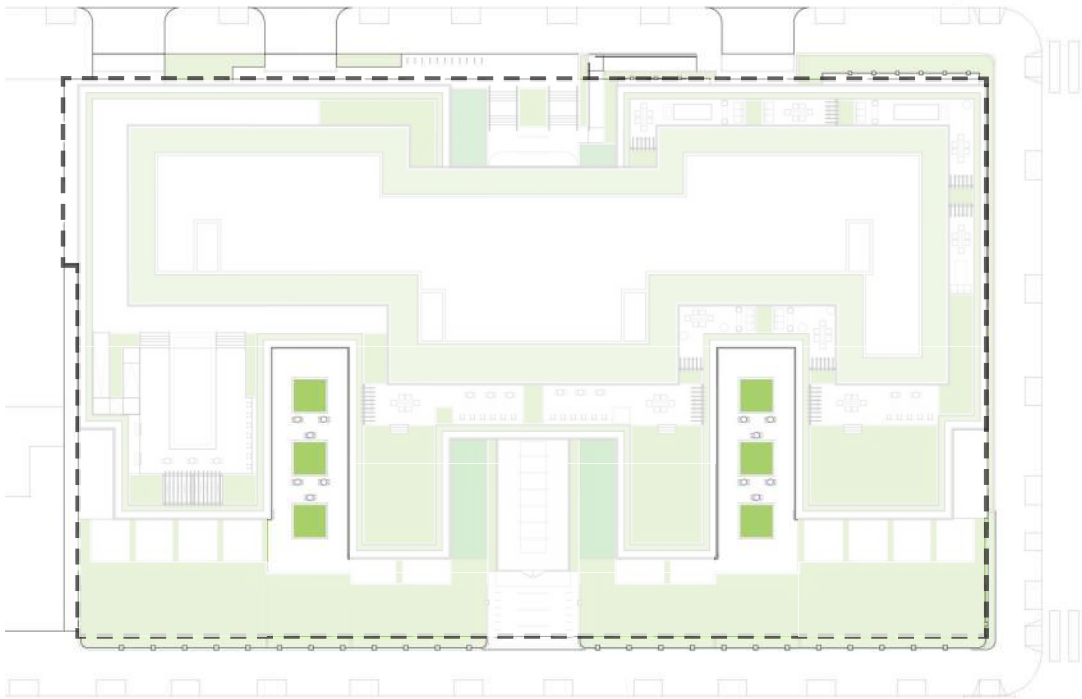
MATERIALS PLAN: ROOFTOP



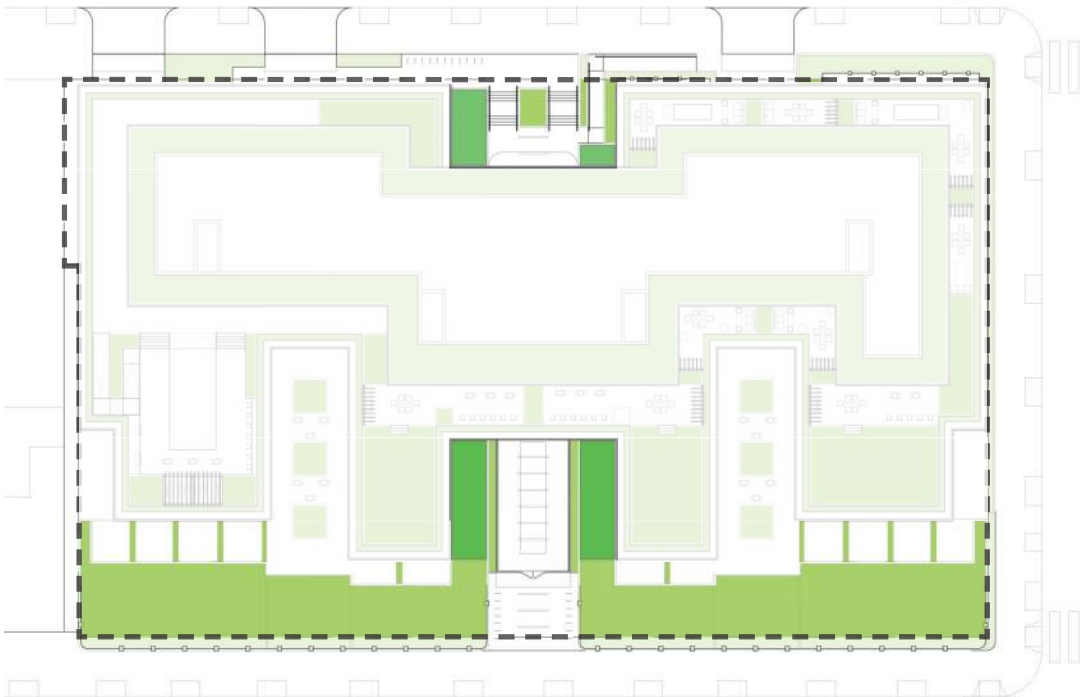
INITIAL GAR ANALYSIS



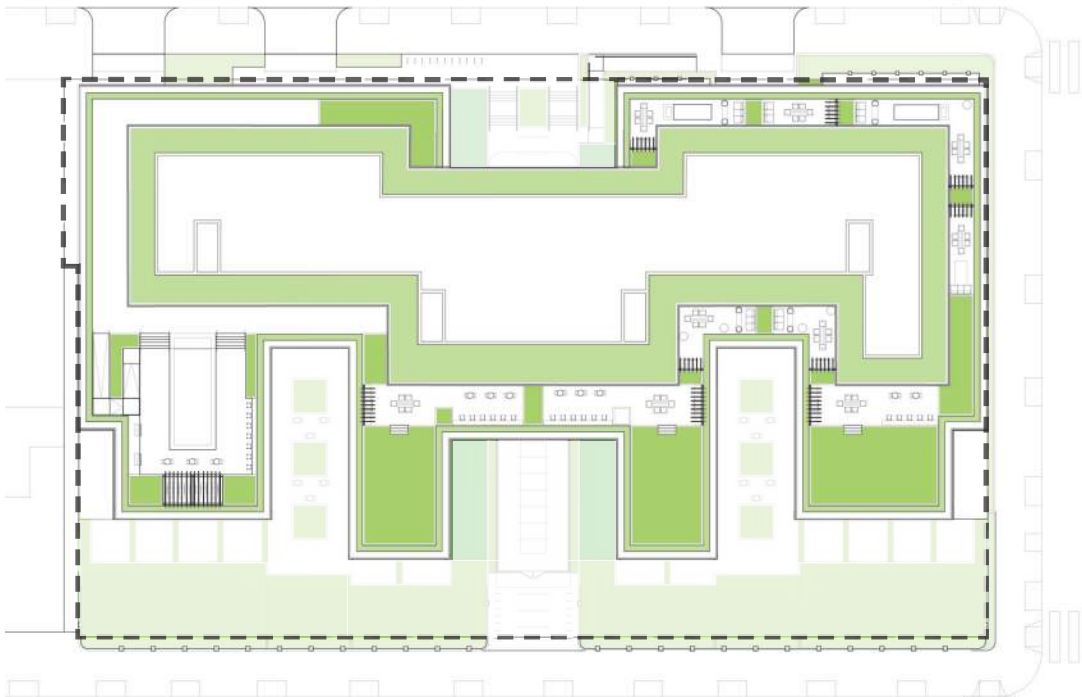
GAR PLAN - OVERALL COMPOSITE PLAN



GAR PLAN - CELLAR LEVEL



GAR PLAN - STREETScape LEVEL



GAR PLAN - PENTHOUSE/ROOF LEVELS

ZONING DESIGNATION: MU-8

GAR TARGET: 0.250

PROPERTY AREA: 57,264 SQ.FT

GREEN ROOF AREA: 12,012 SQ.FT  
(ASSUMED AS INTENSIVE, OVER 8")

GREEN ROOF AREA: 9,602 SQ.FT  
(ASSUMED AS EXTENSIVE, UNDER 8")

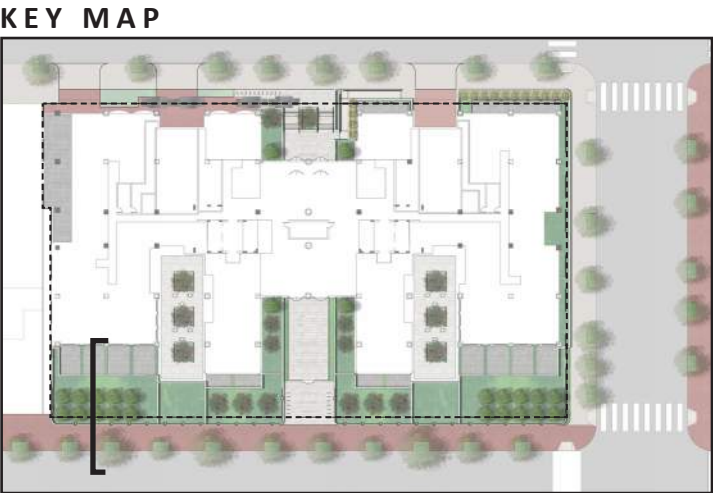
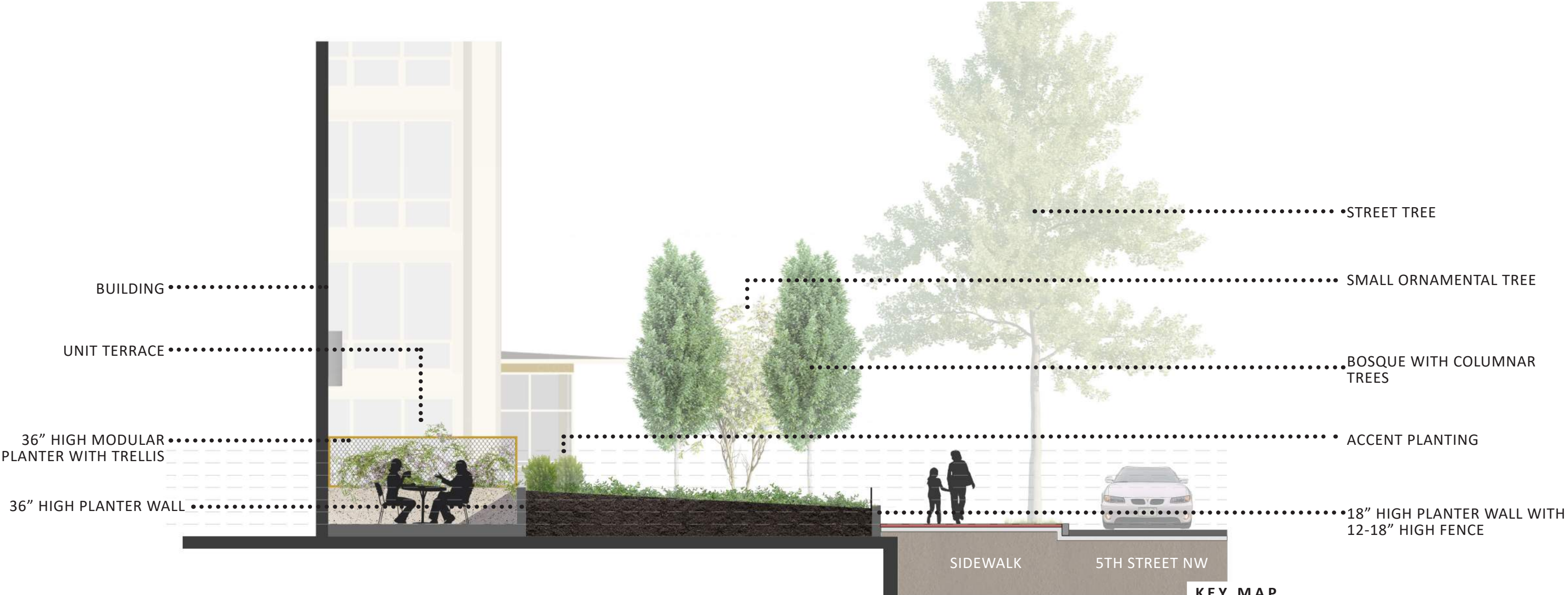
BIORETENTION AREA: 1,670 SQ.FT

LANDSCAPED AREA: 35 SQ.FT  
(INCLUDES AREAS AT GRADE)

CURRENT COMPLIANCE: 0.280

- PROPERTY LINE
- INTENSIVE GREEN ROOF
- EXTENSIVE GREEN ROOF
- BIORETENTION
- GREEN SPACE OUTSIDE OF PROPERTY

SECTIONS  
5TH STREET FRONTAGE

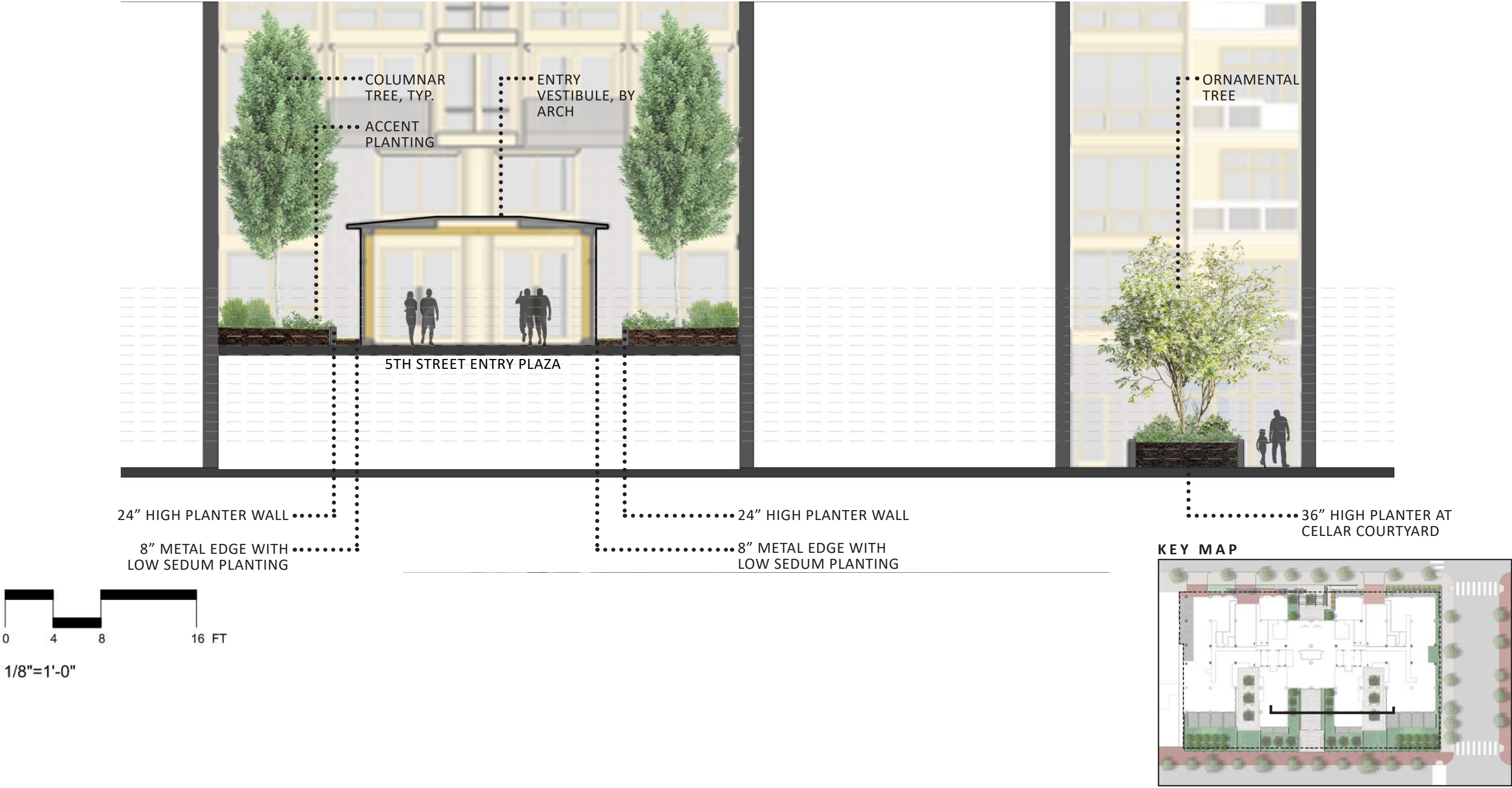


450 5TH STREET, NW

PUD APPLICATION

SECTION THRU 5TH STREET FRONTAGE

SECTIONS  
5TH STREET PLAZA AND CELLAR

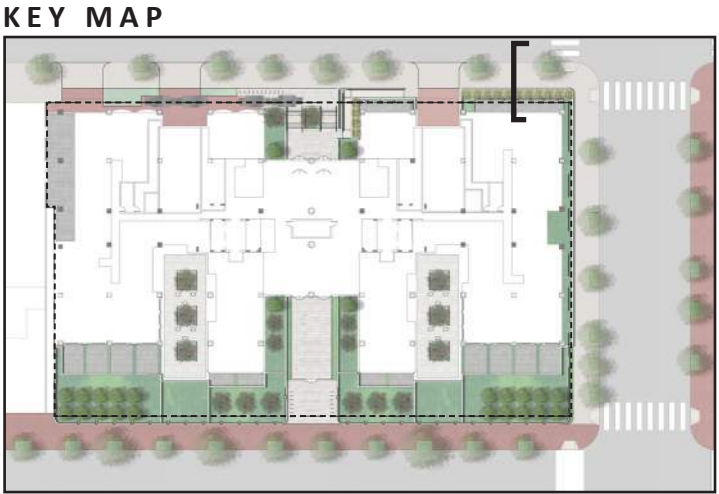
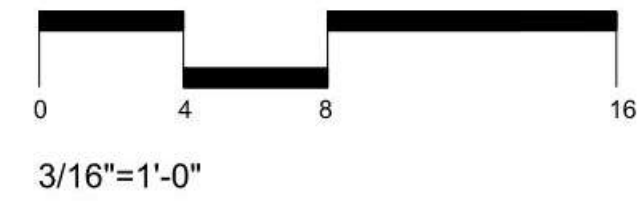


450 5TH STREET, NW

PUD APPLICATION

SECTION THRU 5TH STREET PLAZA & CELLAR

SECTIONS  
6TH STREET UNIT TERRACE AND PLANTER



# SECTIONS

## 5TH STREET AND 6TH STREET PLAZA



450 5TH STREET, NW

PUD APPLICATION

SECTION THRU 5TH STREET & 6TH STREET PLAZA