



Project Description

The center is envisioned to enhance Gallaudet's world-leading research programs on campus, on-line and around the world. The center will be student-centric-contributing to a positive student experience and promoting student success on campus. The new design will focus on 65,000 square feet of renovation space in the basement, building-wide infrastructure upgrades, water-proofing, demolition and removal of first and second floor and significant landscaping works including new first floor cafe, terrace, and amphitheater. The center will provide new innovative, and adaptable spaces for teaching, research, and conferences, that combine the best of the old and new methods of student centered learning and academic inquiry/scholarship and engagement, including extensive digital infrastructure for blended delivery.

The landscape around the Merrill Learning Center will become a vibrant gathering space for the Gallaudet community, offering flexible areas for study, relaxation, and socializing. Guided by DeafSpace principles, the design will enhance the sensory experience, with native plants promoting biodiversity and a connection to Washington, D.C.'s ecology. A new building will create a welcoming entrance, blending the old with the new, ensuring the Merrill Learning Center remains a cherished place. The project will also prioritize accessibility, ensuring that all members of the community can easily navigate and enjoy the space. With sustainability in mind energy-efficient features will be incorporated to reduce the environmental impact.



SITE VIEW OF MLC BUILDING



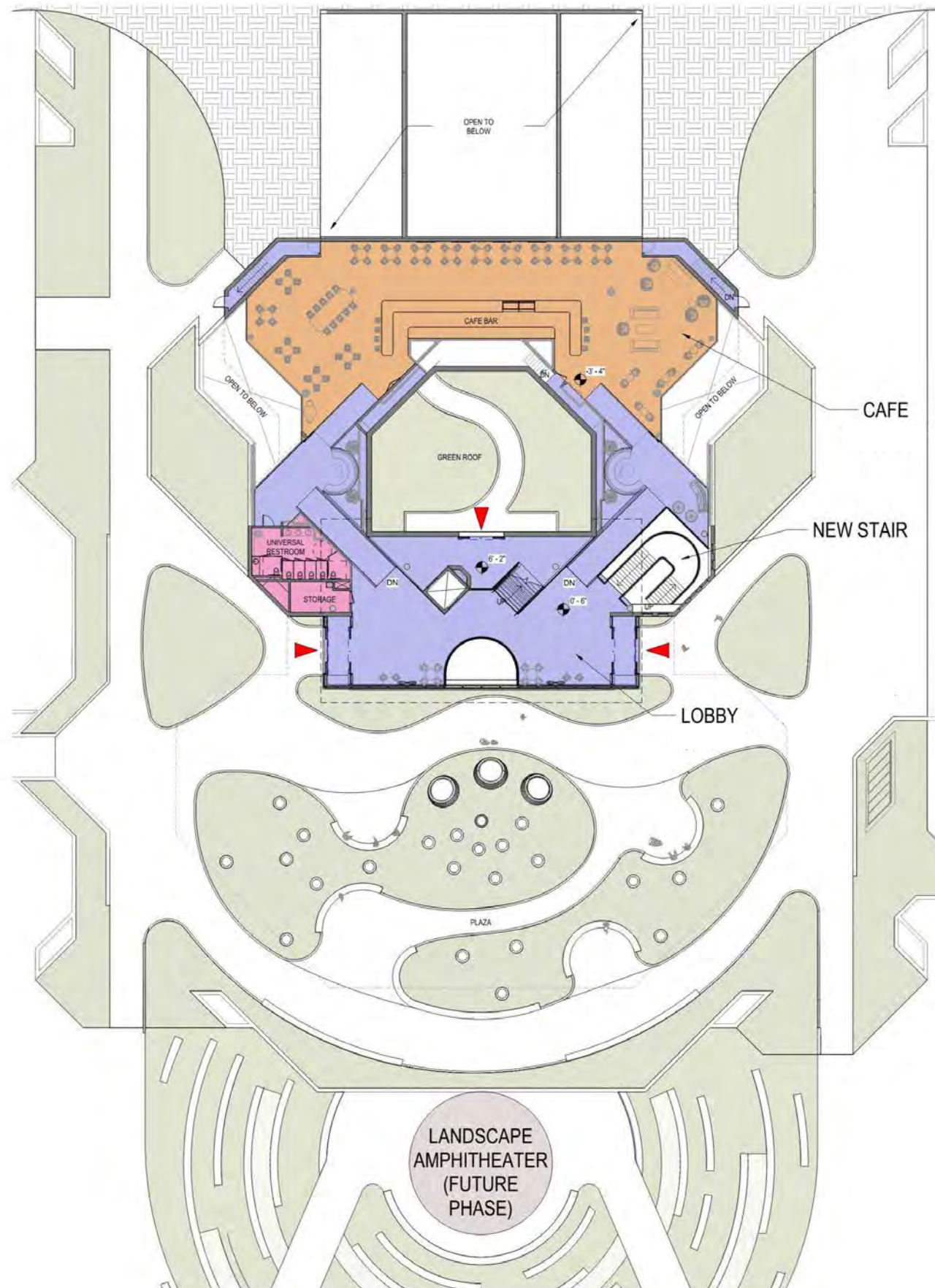
SIDE ENTRANCE OF MLC BUILDING



CAMPUS OVERLOOK



GRAND STAIR



PROGRAM LEGEND

- OPEN SPACE
- UNIVERSAL RESTROOM
- BUILDING OPERATIONS
- CAFE
- LOBBY



COLLABORATION SPACE



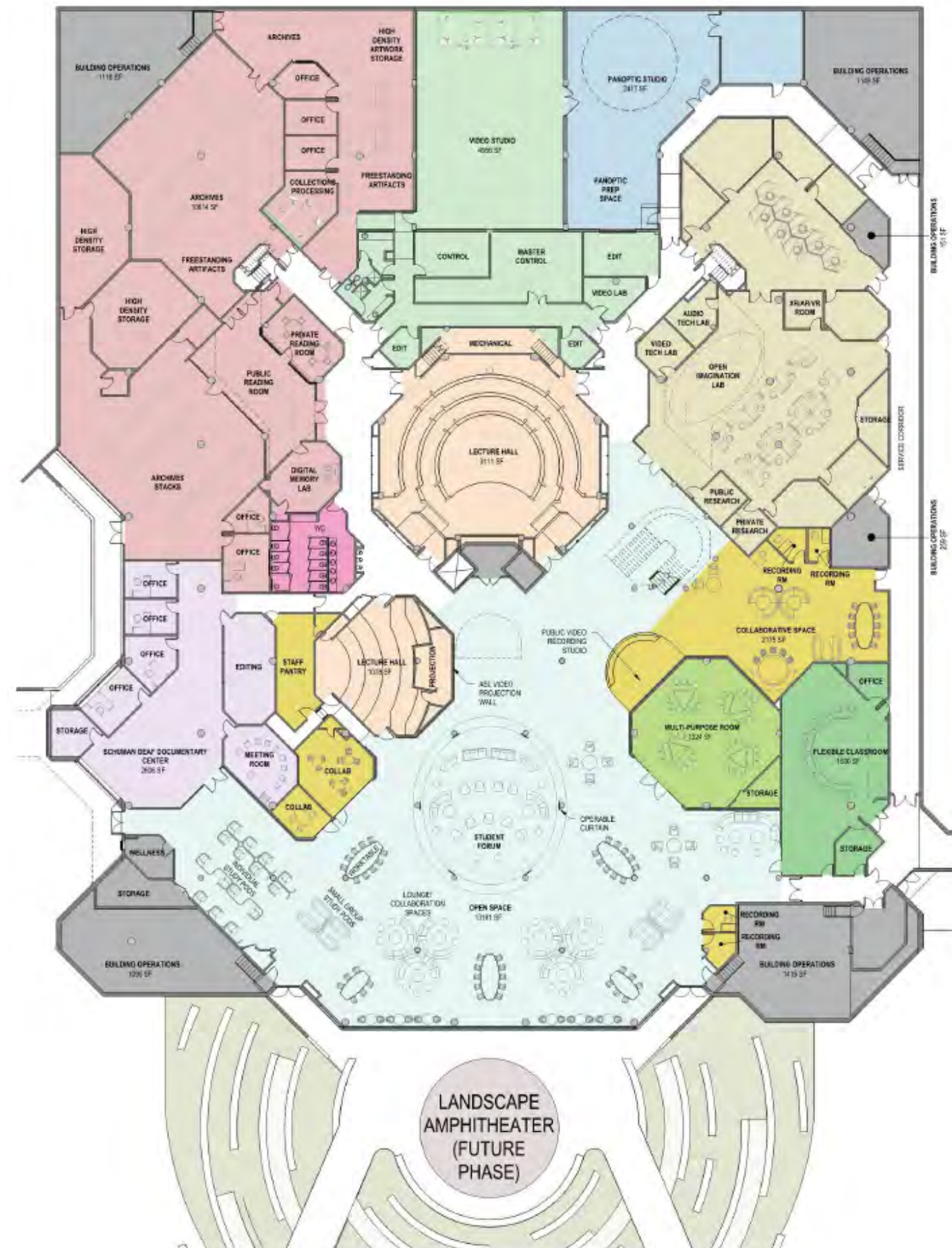
STUDENT FORUM OPEN



OPEN STUDY SPACE

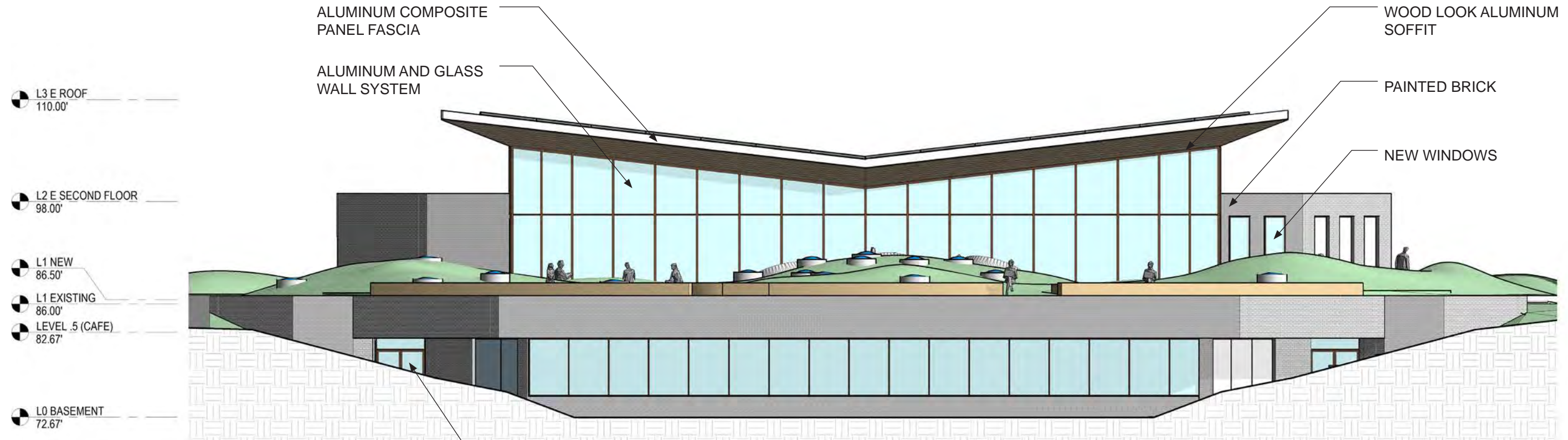


STUDY PODS

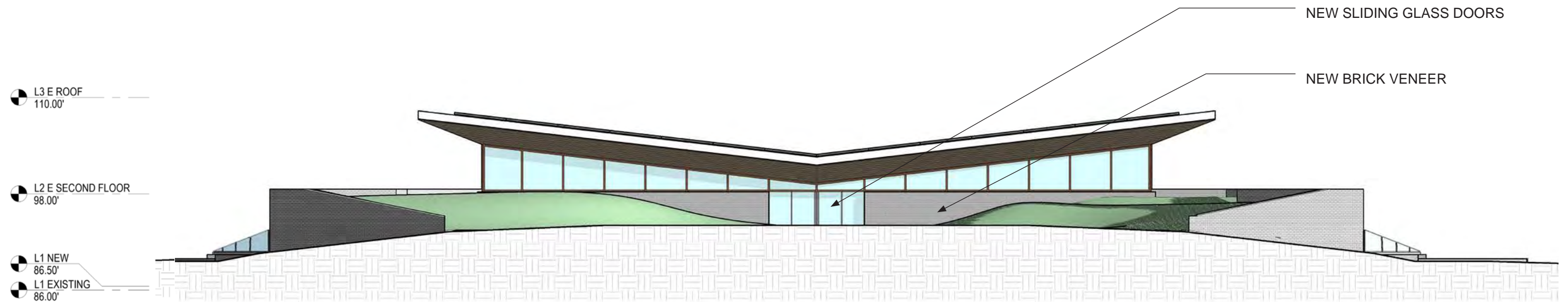


PROGRAM LEGEND

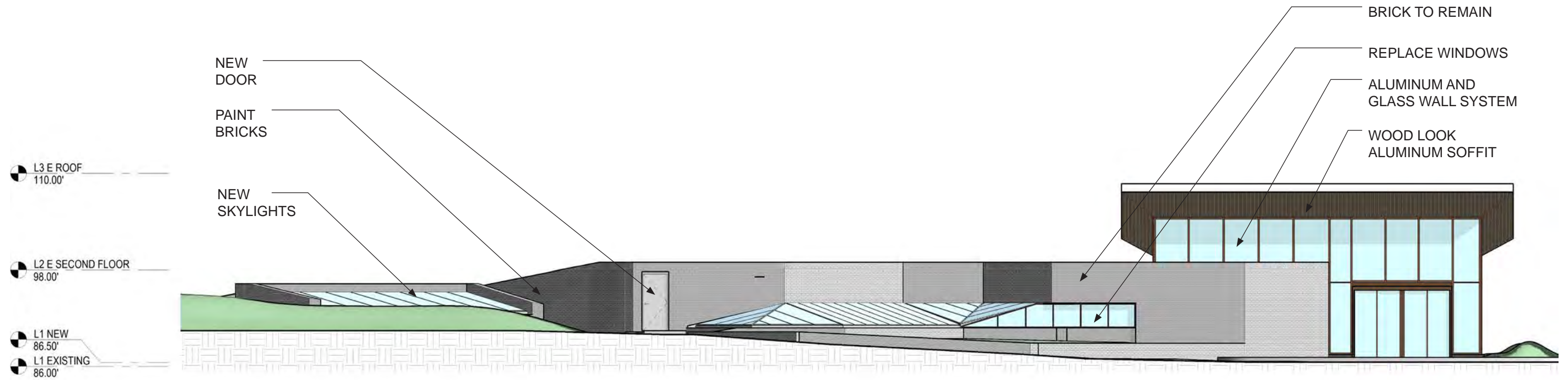
- ARCHIVES
- LECTURE HALL
- VIDEO STUDIO
- PANOPTIC STUDIO
- OFFICE OF RESEARCH
- SCHUMAN DEAF DOCUMENTARY CENTER
- MULTI-PURPOSE ROOM
- FLEXIBLE CLASSROOM
- OPEN SPACE
- COLLABORATIVE SPACE
- UNIVERSAL RESTROOM
- BUILDING OPERATIONS



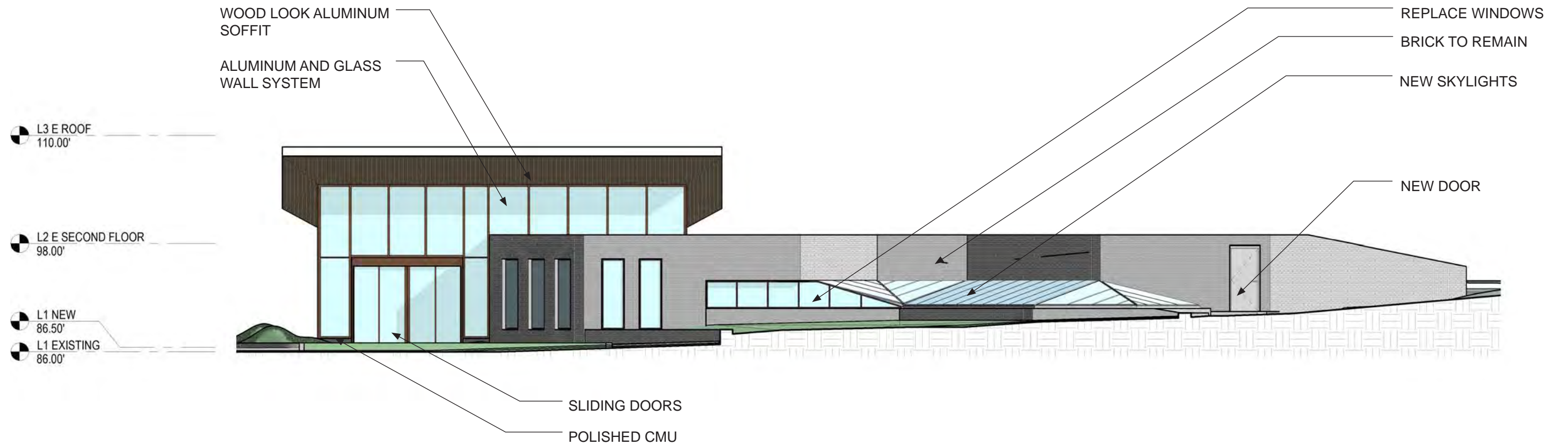
PAVILION ELEVATION - SOUTH



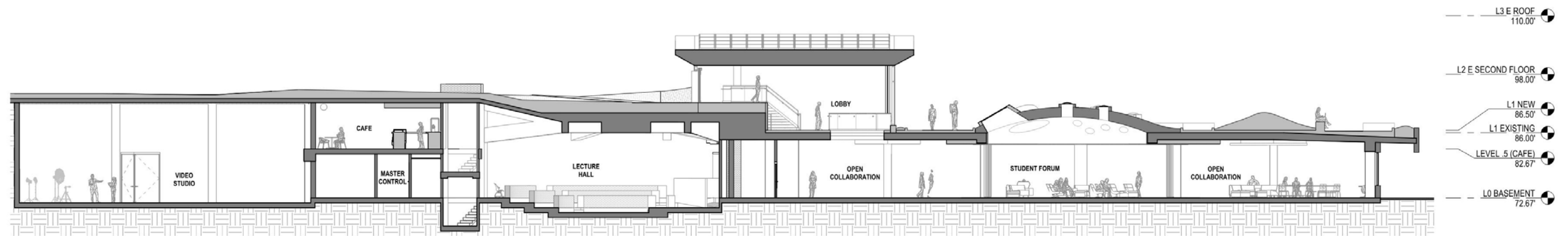
PAVILION ELEVATION - NORTH



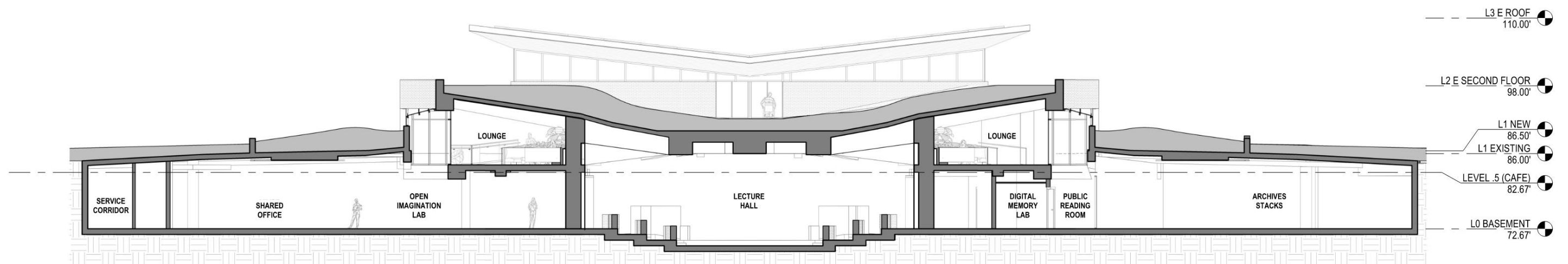
PAVILION ELEVATION - WEST



PAVILION ELEVATION - EAST



BUILDING SECTION LOOKING EAST



BUILDING SECTION LOOKING SOUTH



LANDSCAPE AERIAL



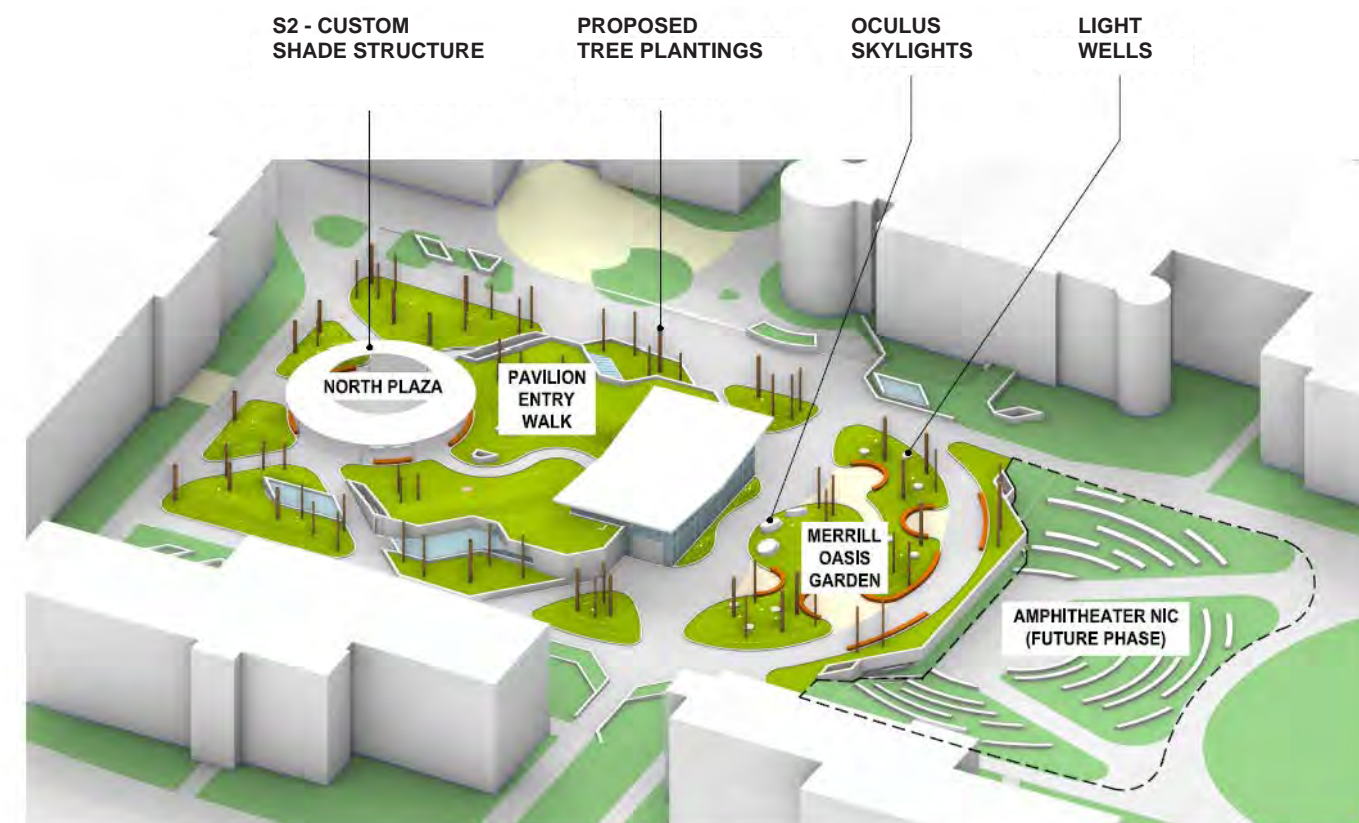
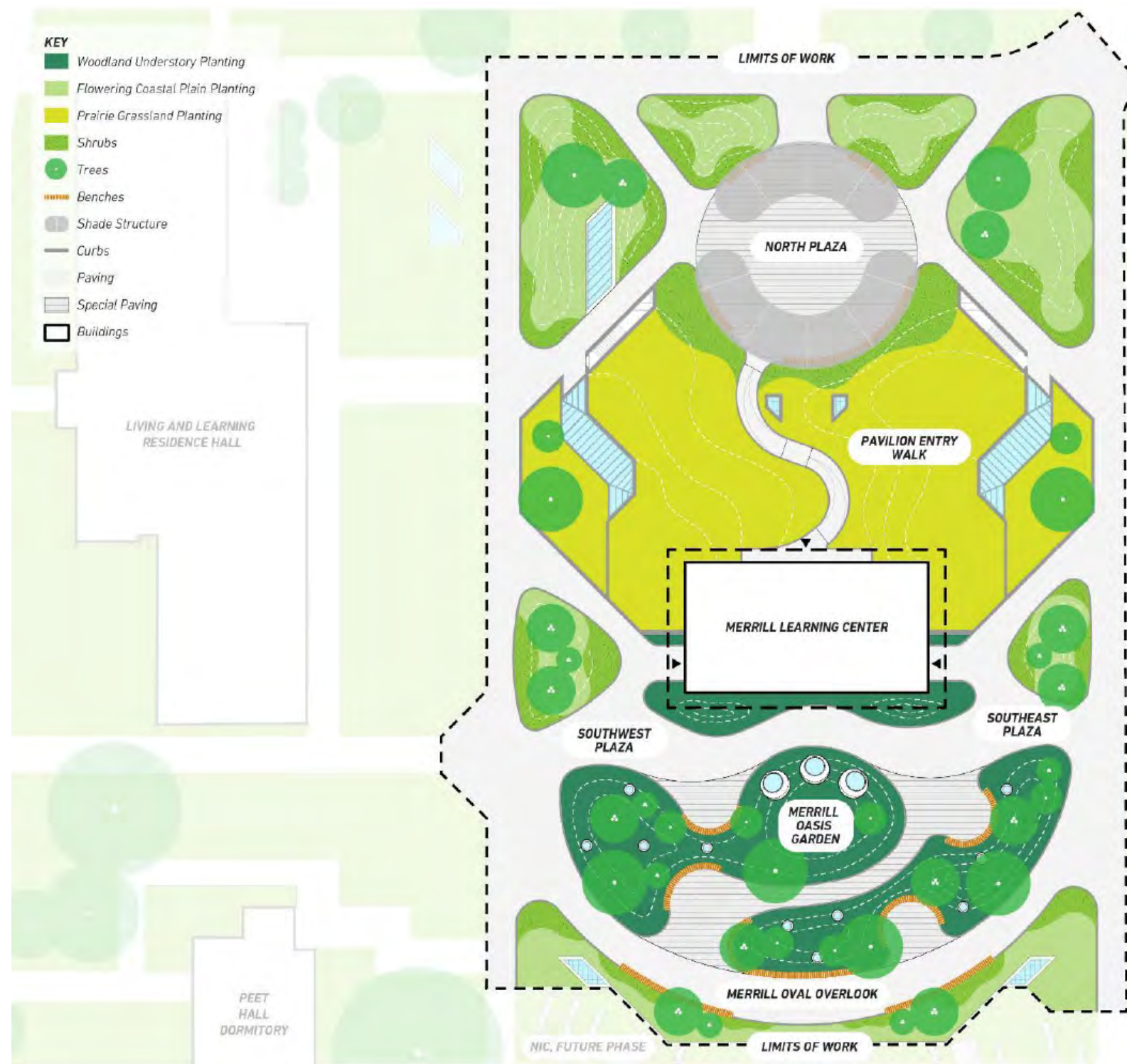
OUTDOOR SEATING



LANDSCAPE SOUTH PLAZA



LANDSCAPE NORTH PLAZA



PAVING SCHEDULE								
ID	SYMBOL	TYPE	LOCATION	DESCRIPTION	NOTES	SIZE / MANUFACTURER	FINISH/COLOR	QTY
P1		CAST-IN-PLACE CONCRETE	PATHWAYS AND NORTH PLAZA	CAST-IN-PLACE CONCRETE	REFER TO CIVIL FOR CONCRETE BASE BUILD-UP			23,328 SQFT
P2		DECORATIVE CAST-IN-PLACE CONCRETE	SEATING NOOKS AND SPECIAL PATHWAY	DECORATIVE CAST-IN-PLACE CONCRETE	1/4" SURFACE SEEDED GRANITE AGGREGATE W/ TOP CAST #50 EXPOSED AGGREGATE SURFACE		REFER TO NARRATIVE	1,566 SQFT
CURBS								
ID	SYMBOL	TYPE	LOCATION	DESCRIPTION	NOTES	MANUFACTURER	FINISH	
C1		CAST-IN-PLACE CONCRETE CURB	AROUND PLANTING BEDS	CAST-IN-PLACE CONCRETE	6"(W) X 3"(H); TOP CAST #50 EXPOSED AGGREGATE SURFACE		REFER TO NARRATIVE	1968.5 FT