





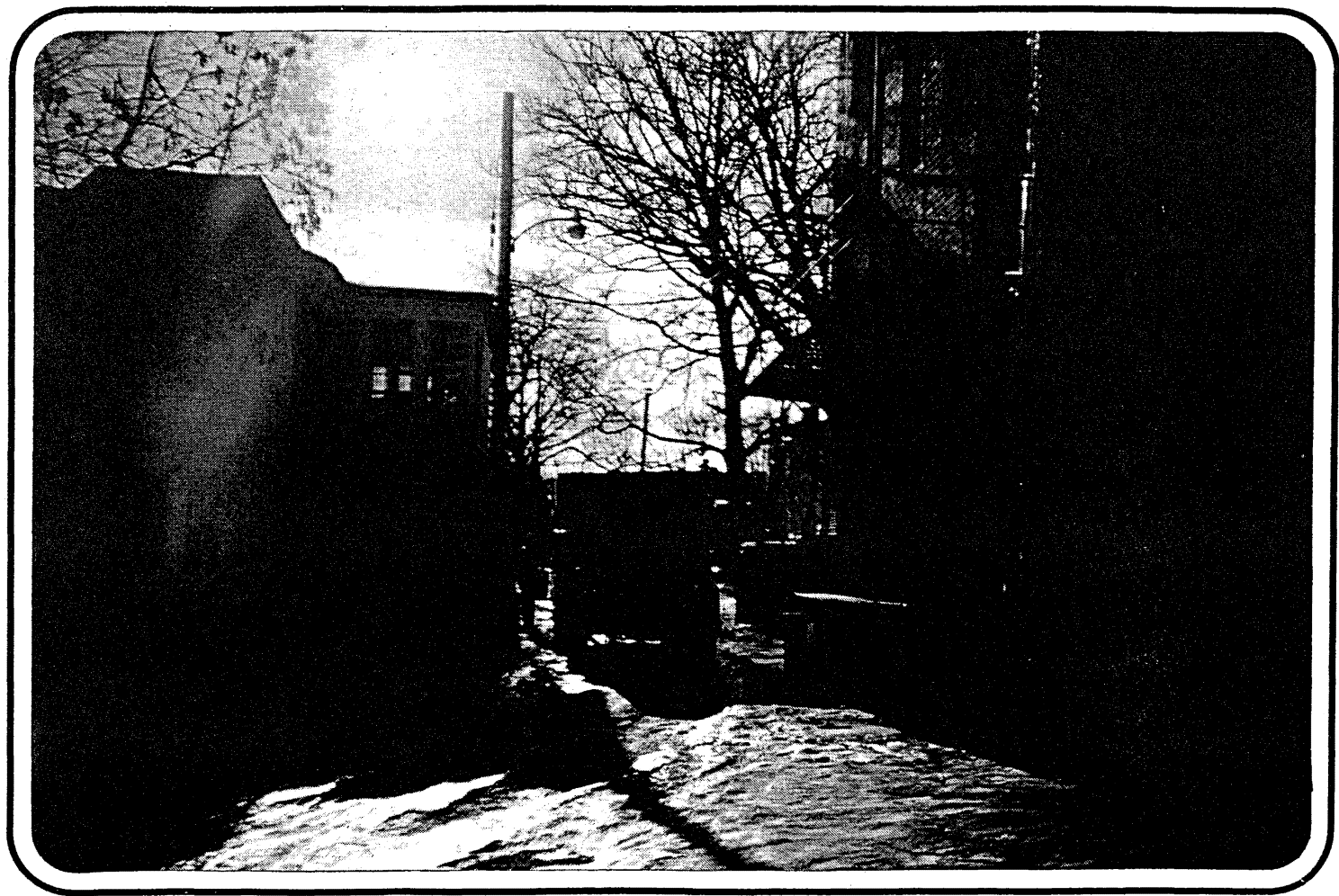
TRANSPORT •

Transportation & Traffic Concerns

- **Metrorail use**
- **Pedestrian issues**
- **Special traffic & parking problems**
- **Alley problems**
- **Commercial density & traffic capacity**

Residential Concerns

- Preservation of the neighborhood
- Alley congestion, noise, and trash
- Resident quality of life
- Commercial growth on residential streets
- Need for businesses that serve the Woodley Park neighborhood
- Traffic density on residential streets





Commercial Concerns

- Threats to neighborhood stability
- The perspective of a business & building owner:
 - Why Navy Chase works -
 - Why Woodley Park doesn't work -
- Lack of an overlay discourages rehabilitation of existing structures
- Lack of an overlay impacts on city-wide economic development

ANC 3C

ANC 3C CONCERNS

- Ward development & conformance to the comprehensive plan
- Zoning and designation of Woodley as a "Neighborhood Center"
- Preservation & stabilization of the neighborhood reasonable development
- Prohibition of PUD's

Phil Middelton

SUMMARY

- ✓ preserve area aesthetics
- ✓ result in rational commercial development
- ✓ preserve historical architecture
- ✓ ensure harmony w/ federal park lands
- ✓ help manage traffic problems
- ✓ prevent eroding neighborhood integrity
- ✓ improve deteriorating climate for small businesses that serve the community
- ✓ help establish a vital neighborhood center