

## Open Letter On Park & Shop Dev.

Honorable James E. Nathanson  
Council of the District of Columbia  
1350 Pennsylvania Avenue, N.W.  
Washington, D.C. 20004

Dear Councilman Nathanson:

On Saturday, January 16th, I was at the "Town Meeting" at the Cleveland Park Library relating to Connecticut Avenue zoning and to the PUD mixed use proposal for the deteriorating Park and Shop at 3501 Connecticut Avenue.

I regret that your schedule on that occasion did not permit you to remain for much of the discussion from the floor. It centered on the Meeting Announcement Flyer, has had been distributed to my home and throughout Cleveland Park.

That CPHS Announcement, featured a drawing purporting to be a sketch of the developer's proposal as published in the Washington Business Journal on December 14, 1987,

When question was raised from the floor as to the accuracy of proposal shown in the Announcement, ANC 3C Chair Robbins stated she had prepared the sketch and that it accurately depicted the architect's (David Childs') rendering as it had appeared in the December 14th issue of the W.B. Journal.

Thereupon the questioner unfurled in front of the Meeting an enlarged photocopy of the Journal article in question. The comparison made clear to me and to all who could see

*Ms. Grogan served as Zoning Chairman for the Conn. Ave. Cit. Assoc.; Demo chair for Precinct 27; board member at Alice Deal & Woodrow Wilson H & S Assoc.; member Wilson Pool const. committee; a founding member of the Friends of the Nat'l Zoo; resident in Clev. Pk since 1927*

that the CPHS Town Meeting Flyer was calculated to *misinform* the residents as to the scale, the design, the set-back, the landscaping, etc. of the proposal set out in the W.B. Journal and in the rendering of noted architect David Childs of Skidmore, Owings and Merrill. The Flyer's statement that the building depicted is to be "block 'block long'" is false! The Ambassador Liquor Store and the Exxon Station will remain in place in the block between Porter and Ordway Streets.

As a member of the Historic Review Board, I know you will want to keep an open mind on the design of this PUD.

I encourage you to make your own comparison of the Flyer with the properties to remain and also with architect David Childs' rendering — as presented in the W.B. Journal. I hope you will then counsel the author of the flyer and CPHS to correct the flyer's message that David Childs' architectural proposal is massive, crude and offensive.

Once given the facts in fair presentation, the residents of Cleveland Park, as well as owners of properties and businesses, will weigh them well, and will respond intelligently in the best interests of a great neighborhood in our Capital City.

Your attention to these matters is appreciated.

Respectfully yours,  
Mary Ellen Grogan

## NATHANSON REPORTS

On the development front, the Zoning Commission is holding a series of hearings on the rezoning of Connecticut Avenue to achieve zoning consistent with the Comprehensive Plan.

Similar hearings are scheduled to begin April 25th for the Cleveland Park section of Wisconsin Avenue. For more information on these hearings, call my office at 724-8021.

Although mediation sessions between TACPECB and the developers at 4000 and 4100 Wisconsin Avenue were unsuccessful, I want to thank Council Chair David Clarke for convening these sessions as an effort towards damage control. I continue to support without reservation community efforts to secure court affirmation for the intent and application of the Comprehensive Plan.

### Legislation introduced:

To strengthen the parking program's goals of giving residents priority use of their neighborhood parking and make it easier for residents to accommodate both social and service visitors, I have introduced the Residential Visitor parking Permit Amendment (Bill 7-406) which will allow:

- Each household one permanent, \$10, yearly renewable parking pass to be used by their visitors to park within the household's square block or block immediately adjacent;
- commercial and service vehicles, displaying the address of the households at which they are working, to park without visitor permits; and
- public schools, with off-street parking for less than half their staff, up to ten visitor permits for faculty members.

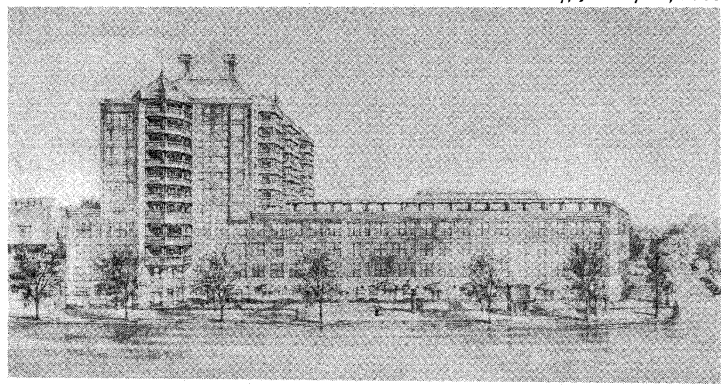
### Legislation Passed:

- The Emergency Frigid Temperature Protection Act, (permanent legislation is under Council consideration) requiring the mayor to open public building space for homeless people when the temperature drops below twenty-five degrees;

- The Protection for Foreign Officials, Official Guests and Internationally Protected Persons Amendment (Bill 7-59), which I cosponsored, would repeal the present D.C. Code provision establishing a "500 foot rule" for demonstrations against diplomatic facilities, but this repeal is contingent upon congressional action to include the District under the current federal law which mandates a 100 foot limitation for demonstrations everywhere else in the United States;

- The Senior Citizens' Home Repair and Improvement Program Fund (Bill 7-167), which I cosponsored, establishing a revolving fund to provide loans up to \$5,000 to low income seniors to assist with home repairs and improvements, with language added to include moderate income homeowners in the program;

- The Commercial Bicycle Operators Training and Licensing Act (Bill 7-289), which I cosponsored;
- The Regulation of Smoking Consumer Protection Act (Bill 7-218), in a considerably weaker version than I originally cosponsored, requires nonsmoking sections in restaurants of more than fifty seats;
- The Neighborhood Municipal Off-Street Parking Facilities Amendment (Bill 7-288), creates a citizens advisory task force and



Provisions for proposed project at 3501 Connecticut Avenue, the Park and Shop site, include:

- Neighborhood-oriented retail shops with no theaters, no hotels and no restaurants. Responsive to the needs of the neighborhood.
- 254 underground parking spaces, including public parking. Underground loading docks accessed from alley.
- Design sensitive to neighboring buildings on Connecticut Avenue. Commercial/retail, representing 75 percent of the building footprint, is under 50 feet in height. Residential tower is designed to be in proportion to its Connecticut Avenue residential neighbors and represents 24 percent of the building footprint.
- 4000 square feet of well-designed landscaping, providing easy, well-lighted flow around the METRO stop—and including a neighborhood information kiosk.
- A 1000 square-foot area in the commercial portion of the building donated for a community related use.
- 20 percent of housing available to low and moderate income elderly people and others.

contact

Patricia L. Daniels  
the Urban Group

requires the mayor within a specific time period, to establish a specific number of neighborhood off-street parking spaces in residential zones where housing does not currently exist. The bill was amended to include downtown commercial areas.

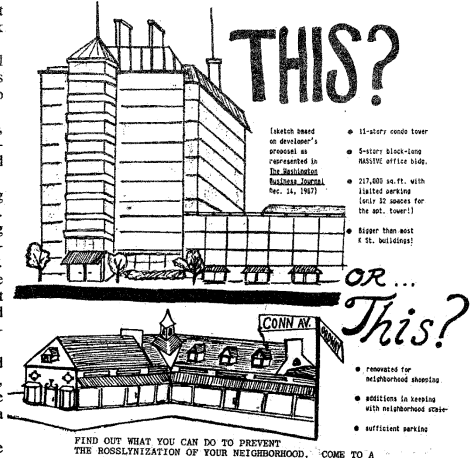
### Legislation returned to committee:

- The Comprehensive Anti-Drunk Driving Act (Bill 7-88), which I cosponsored, strengthens the penalties for driving while intoxicated or under the influence of alcohol or drugs or while impaired by alcohol by increasing the fee for restoration or reinstatement of a motor vehicle operator permit, establishing mandatory minimum fines, and increasing the period of operator permit revocations.

The bill also permits sentencing drunk drivers to community service in lieu of incarceration and allows use of the Victims of Violent Crimes Compensation Fund as a secondary source of compensation for persons injured by drunk drivers. It was sent back for consideration of strengthening police authority to arrest drivers suspected of being intoxicated and to impound their vehicles.

### Appointments:

Hugh Allen whom I nominated, and Charito Kravut, Carol Knowlton, and Valerie Lemmie to the Enterprise Zone Study Commission;



When: Saturday afternoon, JAN. 15, at 2 pm.  
Where: Cleveland Park Library Aud.  
Who & What: Councilman Jim Nathanson, CPHS Pres. Terri Bonenberg & Save Our Supermarket Chair Margaret Bero will report on developer's plans to change the quality of our neighborhood, and our plans to fight back.  
For more info, contact Cleveland Park Historical Society, Exec. Dir. Kathleen Wood, 244-1276.

## Hospice Has New Development Coordinator

Hospice Care of the District of Columbia is pleased to announce Mrs. Kelley Proxmire has joined their staff as Development Coordinator. Mrs. Proxmire was on the Board of Directors of Hospice Care for two years prior to this appointment and was instrumental in organizing the junior supporters of Hospice Care by chairing three successful events benefiting this program for terminally ill people. Her professional background is as membership director and special events coordinator for the Pines Club and Four Seasons Hotel. Mrs. Proxmire's commitment to community organizations is evidenced by her participation on numerous fund-raising committees, such as the Washington Antiques Junior Dance, Bravo (Washington Opera), the Traveler's Aid Society, Second Genesis, and the Washington Episcopal School. Hospice Care of the District of Columbia has provided comprehensive and compassionate care to over 500 terminally-ill residents of the District since its beginning in 1979.

## Genealogical Society

The National Genealogical Society will meet on Saturday, 6 February 1988, at 2:30 p.m. in the Fifth Floor Theater of the National Archives, 8th and Pennsylvania Avenue, N.W., Washington, D.C.

Bruce D. Thompson, C.A.I.L.S., a genealogist with the Bureau of Indian Affairs, will speak on "Indian Tribal Claims."

Claims brought by Indian tribes against the United States for various reasons and the resulting judgment awards can provide a wealth of material for the genealogist tracing Native American Indian lineages. Also, depending upon how the judgments in successful cases were awarded, the resulting applications for payment may provide useful clues for non-Indian lineages.

The meeting is open to the public free of charge.