

2100 M STREET N.W.  
2100 M St. N.W.  
Washington, D.C. 20037

Owner  
**BXP**  
2200 Pennsylvania Ave NW  
Washington, DC 20037  
tel. 202.545.0800  
www.bxp.com

Design Consultant  
**Pickard Chilton**  
565 Chapel Street  
New Haven, Connecticut 06510  
tel. 203.766-8600  
www.pickarchilton.com

Architect of Record  
**Kendall/Heaton Associates**  
2050 Post Oak Boulevard, Suite 1000  
Houston, Texas 77002  
tel. 713.877.1192  
www.kendall-heaton.com

Landscape Architect  
**ParkerRodriguez**  
211 N Union Street, Suite 320  
Alexandria, Virginia 22314  
tel. 703.548.5010  
www.parkerrodriguez.com

Structural Engineer  
**Thornton Tomasetti**  
1330 Connecticut Avenue NW, Suite 300  
Washington, D.C. 20036  
tel. 202.593.6300  
www.thorntontomasetti.com

Mechanical and Electrical Engineer  
**GHT**  
1110 North Glebe Road, Suite 300  
Arlington, Virginia 22201  
tel. 703.243.1200  
www.ghtinc.com

Civil Engineer  
**Wiles Mensch**  
100 M Street, SE, #320  
Washington, D.C. 20003  
tel. 202.638-4040  
www.wm-dc.com

Transportation Consultant  
**Wells + Associates**  
650 Massachusetts Avenue NW, Suite 600  
Washington, D.C. 20001  
tel. 202.978.5222  
www.wellsandassociates.com

Vertical Transportation  
**VDA**  
120 Eagle Rock Avenue, Suite 310  
East Hanover, New Jersey 07936  
tel. 973.994.9220  
www.vdassoc.com

REVISIONS

Design Development

This drawing is not for construction or bidding purposes. Pickard Chilton Architects, Inc. has prepared this drawing solely to communicate architectural design intent. Pickard Chilton Architects, Inc. is not the Architect of Record and therefore is not responsible for preparing construction documents or for technical, legal, or construction-related matters. Pickard Chilton Architects, Inc. is not responsible for nor does it make any representation concerning dimensional accuracy of this drawing or coordination of this drawing with documents prepared by other disciplines.

NOT FOR CONSTRUCTION

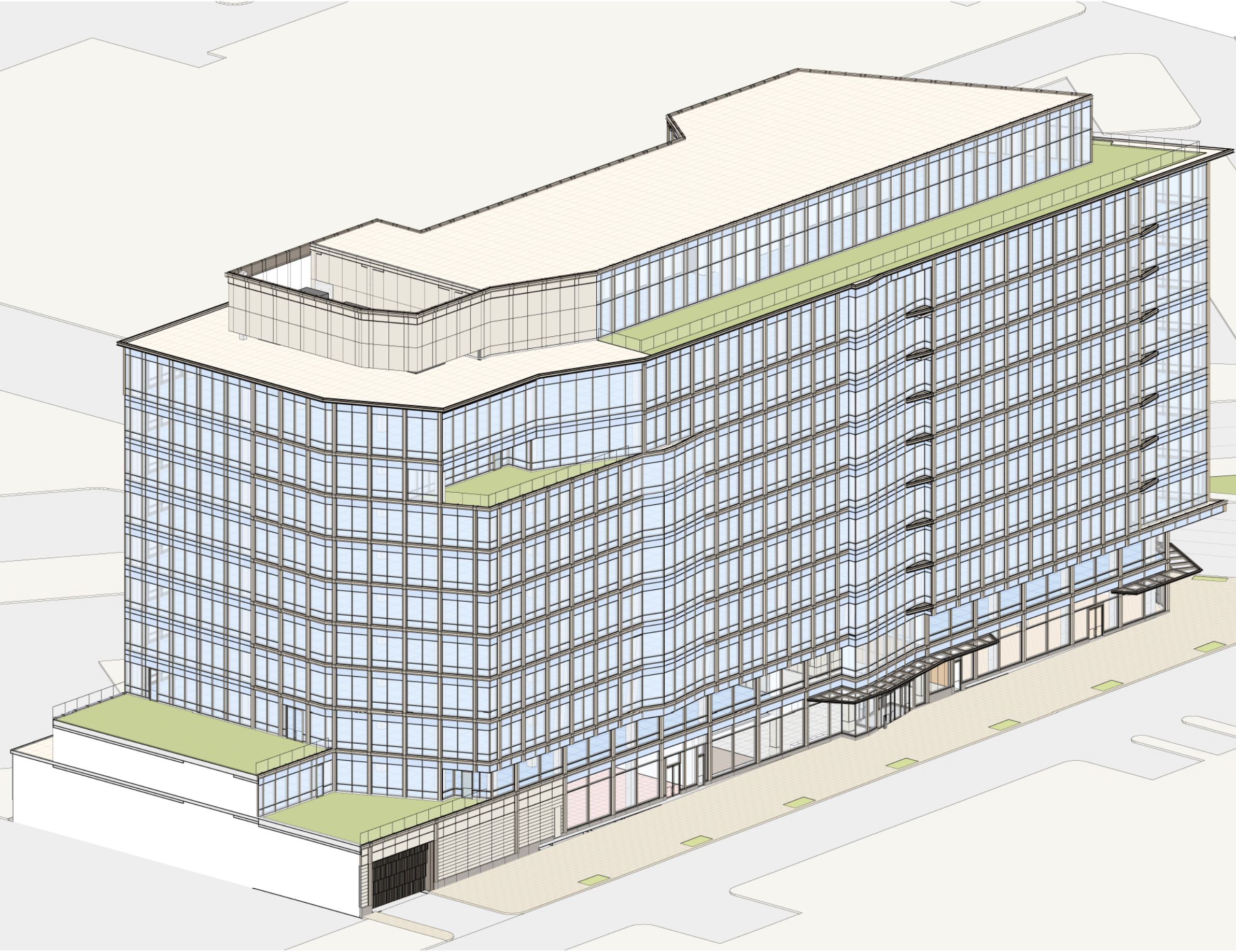
OVERALL AXONOMETRIC - NORTHEAST

PROJECT: 2530  
DATE: June 2026  
SCALE:  
SHEET NUMBER:  
**ZONING COMMISSION**  
**District of Columbia**  
**CASE NO. 26-05**  
**EXHIBIT NO. 8A6**

**VDR A4.01**

Copyright 2025 by Pickard Chilton Architects, Inc. All rights reserved.

1 VDR - OVERALL AXONOMETRIC - NORTHEAST



2100 M STREET N.W.  
2100 M St. N.W.  
Washington, D.C. 20037

Owner  
**BXP**  
2200 Pennsylvania Ave NW  
Washington, DC 20037  
tel. 202.545.0800  
www.bxp.com

Design Consultant  
**Pickard Chilton**  
665 Chapel Street  
New Haven, Connecticut 06510  
tel. 203.766.8600  
www.pickarchilton.com

Architect of Record  
**Kendall/Heaton Associates**  
3050 Post Oak Boulevard, Suite 1000  
Houston, Texas 77002  
tel. 713.877.1192  
www.kendall-heaton.com

Landscape Architect  
**ParkerRodriguez**  
211 N Union Street, Suite 320  
Alexandria, Virginia 22314  
tel. 703.548.5010  
www.parkerrodriguez.com

Structural Engineer  
**Thornton Tomasetti**  
1330 Connecticut Avenue NW, Suite 300  
Washington, D.C. 20036  
tel. 202.590.6300  
www.thorntontomasetti.com

Mechanical and Electrical Engineer  
**GHT**  
1110 North Glebe Road, Suite 300  
Arlington, Virginia 22201  
tel. 703.243.1200  
www.ghtinc.com

Civil Engineer  
**Wiles Mensch**  
100 M Street SE, #320  
Washington, D.C. 20003  
tel. 202.638-4040  
www.wm-dc.com

Transportation Consultant  
**Wells + Associates**  
650 Massachusetts Avenue NW, Suite 600  
Washington, D.C. 20001  
tel. 202.978.5222  
www.wellsandassociates.com

Vertical Transportation  
**VDA**  
120 Eagle Rock Avenue, Suite 310  
East Hanover, New Jersey 07936  
tel. 973.994.9220  
www.vdassoc.com

REVISIONS

Design Development

This drawing is not for construction or bidding purposes. Pickard Chilton Architects, Inc. has prepared this drawing solely to communicate architectural design intent. Pickard Chilton Architects, Inc. is not the Architect of Record and therefore is not responsible for preparing construction documents or for technical, legal, or construction-related matters. Pickard Chilton Architects, Inc. is not responsible for nor does it make any representation concerning dimensional accuracy of this drawing or coordination of this drawing with documents prepared by other disciplines.

NOT FOR CONSTRUCTION

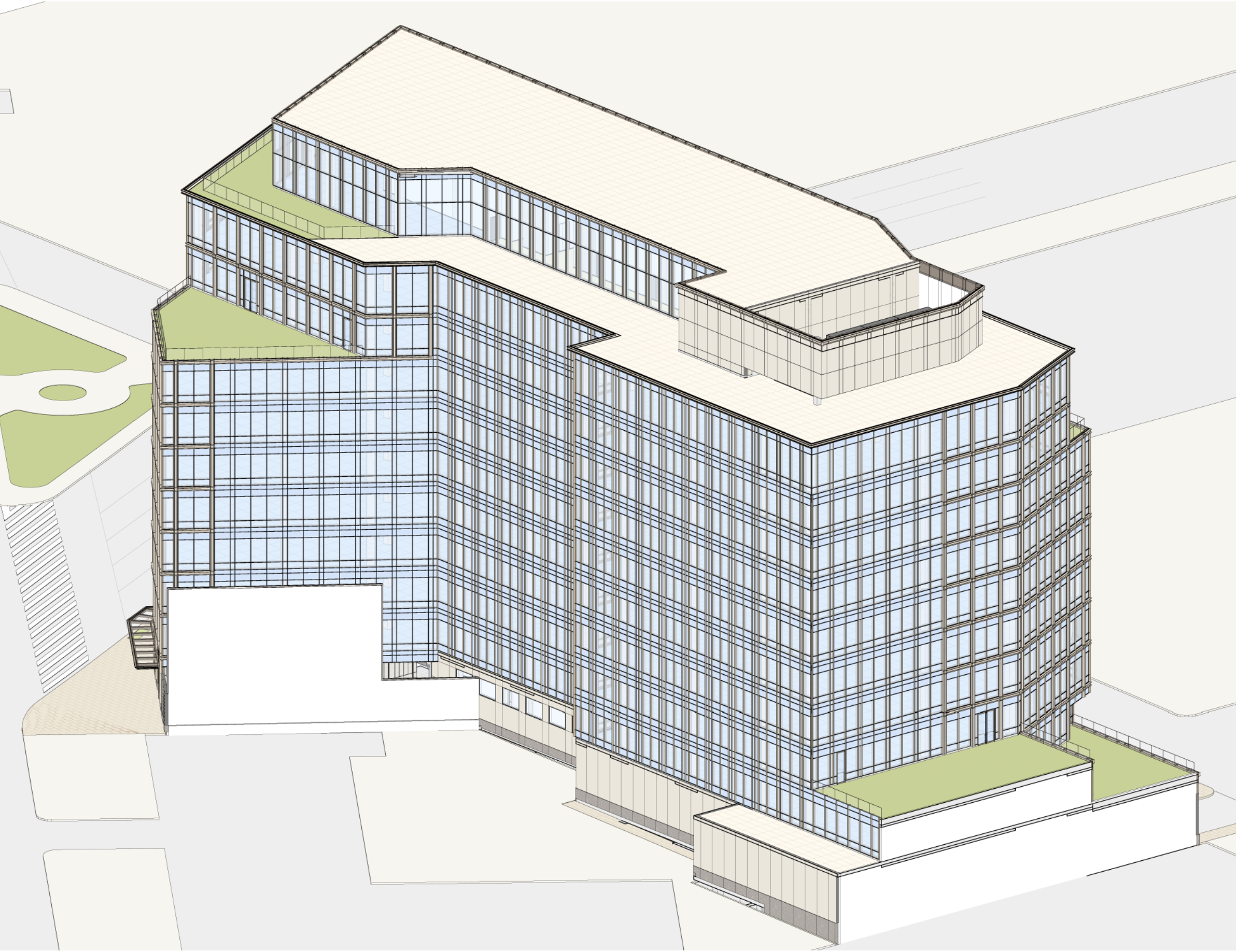
OVERALL AXONOMETRIC - SOUTHEAST

PROJECT: 2530  
DATE: June 2026  
SCALE:

SHEET NUMBER:

**VDR A4.02**

Copyright 2026 by Pickard Chilton Architects, Inc. All rights reserved.



1 VDR - OVERALL AXONOMETRIC - SOUTHWEST

PICKARD CHILTON

2100 M STREET N.W.  
2100 M St. N.W.  
Washington, D.C. 20037

Owner  
**BXP**  
2200 Pennsylvania Ave NW  
Washington, DC 20037  
tel. 202.545.0800  
www.bxp.com

Design Consultant  
**Pickard Chilton**  
565 Chapel Street  
New Haven, Connecticut 06510  
tel. 203.766-8600  
www.pickarchilton.com

Architect of Record  
**Kendall/Heaton Associates**  
2050 Post Oak Boulevard, Suite 1000  
Houston, Texas 77002  
tel. 713.877.1192  
www.kendall-heaton.com

Landscape Architect  
**ParkerRodriguez**  
211 N Union Street, Suite 320  
Alexandria, Virginia 22314  
tel. 703.548.5010  
www.parkerrodriguez.com

Structural Engineer  
**Thornton Tomasetti**  
1330 Connecticut Avenue NW, Suite 300  
Washington, D.C. 20036  
tel. 202.593.6300  
www.thorntontomasetti.com

Mechanical and Electrical Engineer  
**GHT**  
1110 North Glebe Road, Suite 300  
Arlington, Virginia 22201  
tel. 703.243.1200  
www.ght.com

Civil Engineer  
**Wiles Mensch**  
100 M Street SE, #320  
Washington, D.C. 20003  
tel. 202.638-4040  
www.wm-dc.com

Transportation Consultant  
**Wells + Associates**  
650 Massachusetts Avenue NW, Suite 600  
Washington, D.C. 20001  
tel. 202.978.5222  
www.wellsandassociates.com

Vertical Transportation  
**VDA**  
120 Eagle Rock Avenue, Suite 310  
East Hanover, New Jersey 07936  
tel. 973.994.9220  
www.vdassoc.com

REVISIONS

Design Development

This drawing is not for construction or bidding purposes. Pickard Chilton Architects, Inc. has prepared this drawing solely to communicate architectural design intent. Pickard Chilton Architects, Inc. is not the Architect of Record and therefore is not responsible for preparing construction documents or for technical, legal, or construction-related matters. Pickard Chilton Architects, Inc. is not responsible for nor does it make any representation concerning dimensional accuracy of this drawing or coordination of this drawing with documents prepared by other disciplines.

NOT FOR CONSTRUCTION

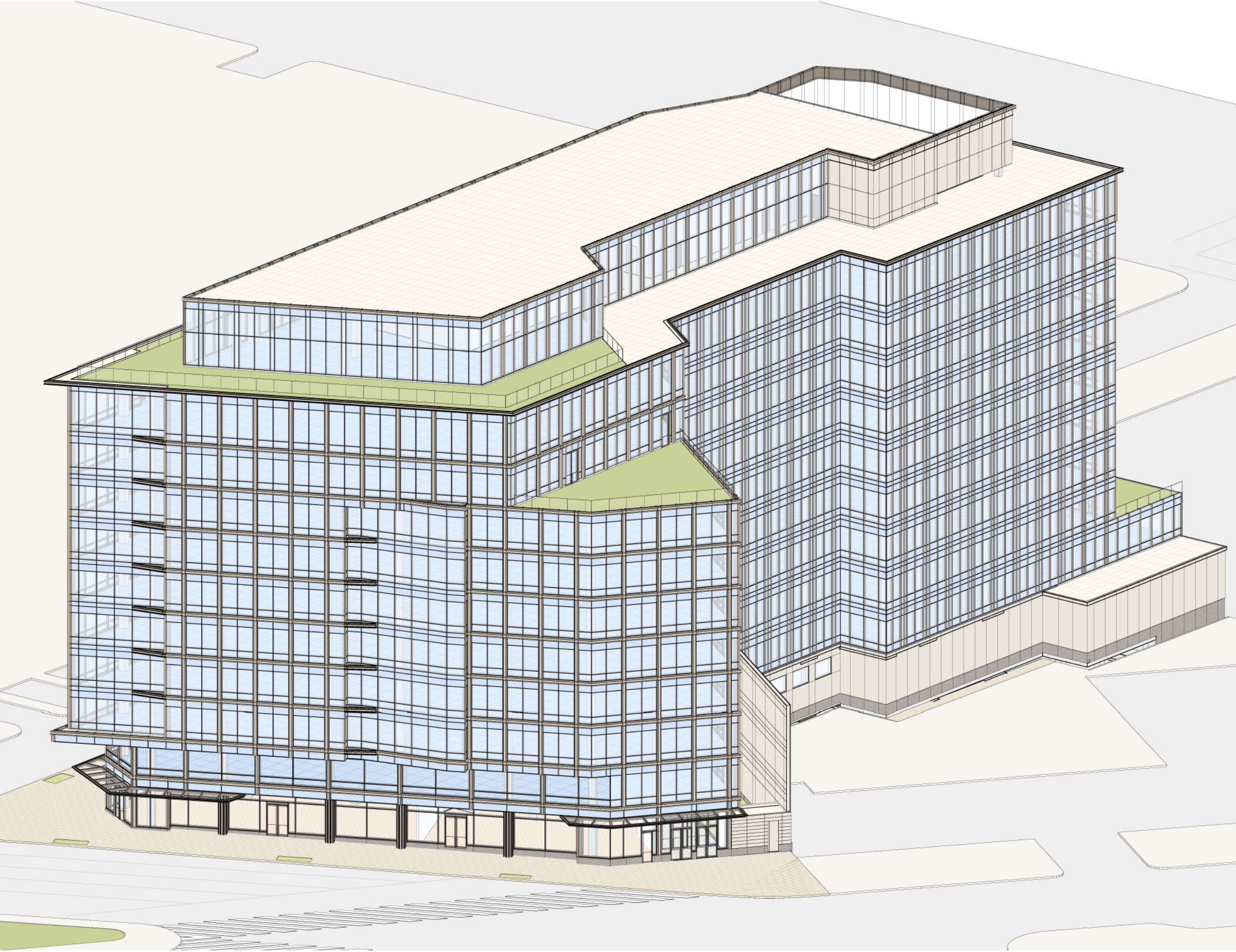
OVERALL AXONOMETRIC - SOUTHWEST

PROJECT: 2530  
DATE: June 2026  
SCALE:

SHEET NUMBER:

VDR A4.03

Copyright 2026 by Pickard Chilton Architects, Inc. All rights reserved.



1 VDR - OVERALL AXONOMETRIC - NORTHWEST

PICKARD CHILTON

2100 M STREET N.W.  
2100 M St. N.W.  
Washington, D.C. 20037

Owner  
**BXP**  
2200 Pennsylvania Ave NW  
Washington, DC 20037  
tel. 202.545.0800  
www.bxp.com

Design Consultant  
**Pickard Chilton**  
565 Chapel Street  
New Haven, Connecticut 06510  
tel. 203.766-8600  
www.pickarchilton.com

Architect of Record  
**Kendall/Heaton Associates**  
2050 Post Oak Boulevard, Suite 1000  
Houston, Texas 77002  
tel. 713.877.1192  
www.kendall-heaton.com

Landscape Architect  
**ParkerRodriguez**  
211 N Union Street, Suite 320  
Alexandria, Virginia 22314  
tel. 703.548.5010  
www.parkerrodriguez.com

Structural Engineer  
**Thornton Tomasetti**  
1330 Connecticut Avenue NW, Suite 300  
Washington, D.C. 20036  
tel. 202.593.6300  
www.thorntontomasetti.com

Mechanical and Electrical Engineer  
**GHT**  
1110 North Glebe Road, Suite 300  
Arlington, Virginia 22201  
tel. 703.243.1200  
www.ghtinc.com

Civil Engineer  
**Wiles Mensch**  
100 M Street, SE, #320  
Washington, D.C. 20003  
tel. 202.638-4040  
www.wm-dc.com

Transportation Consultant  
**Wells + Associates**  
650 Massachusetts Avenue NW, Suite 600  
Washington, D.C. 20001  
tel. 202.978.5222  
www.wellsandassociates.com

Vertical Transportation  
**VDA**  
120 Eagle Rock Avenue, Suite 310  
East Hanover, New Jersey 07936  
tel. 973.994.9220  
www.vdassoc.com

REVISIONS

**Design Development**  
This drawing is not for construction or bidding purposes. Pickard Chilton Architects, Inc. has prepared this drawing solely to communicate architectural design intent. Pickard Chilton Architects, Inc. is not the Architect of Record and therefore is not responsible for preparing construction documents or for technical, legal, or construction-related matters. Pickard Chilton Architects, Inc. is not responsible for nor does it make any representation concerning dimensional accuracy of this drawing or coordination of this drawing with documents prepared by other disciplines.

NOT FOR CONSTRUCTION

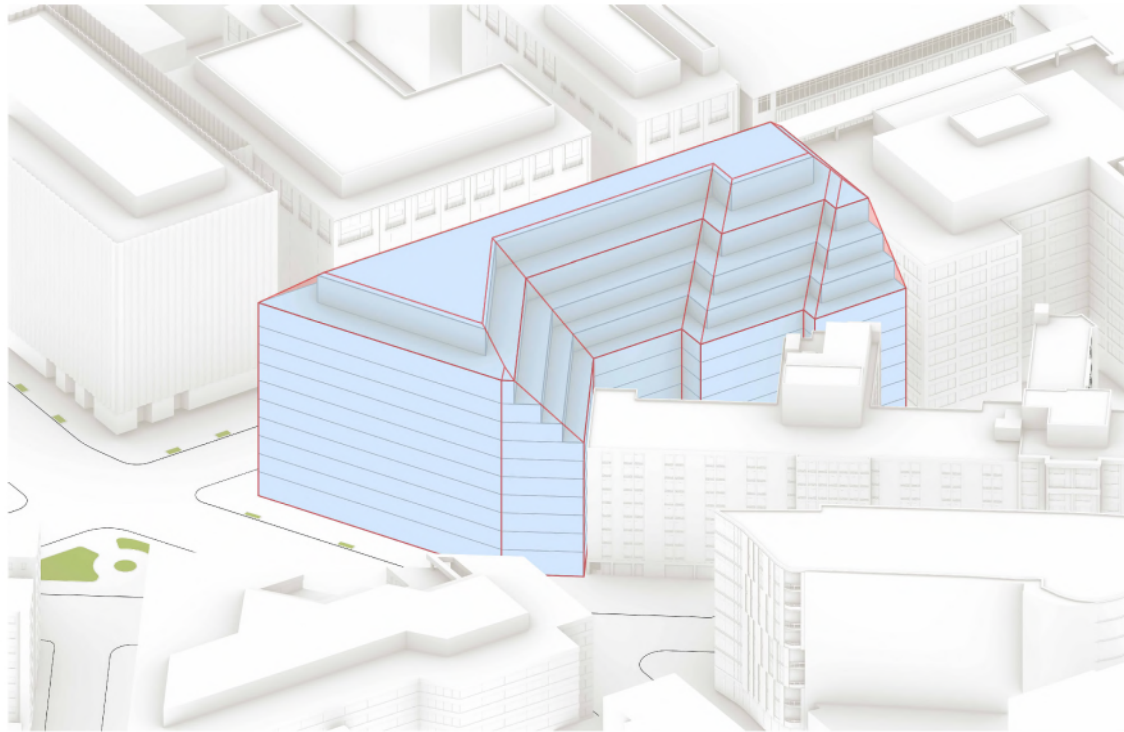
OVERALL AXONOMETRIC - NORTHWEST

PROJECT: 2530  
DATE: June 2026  
SCALE:

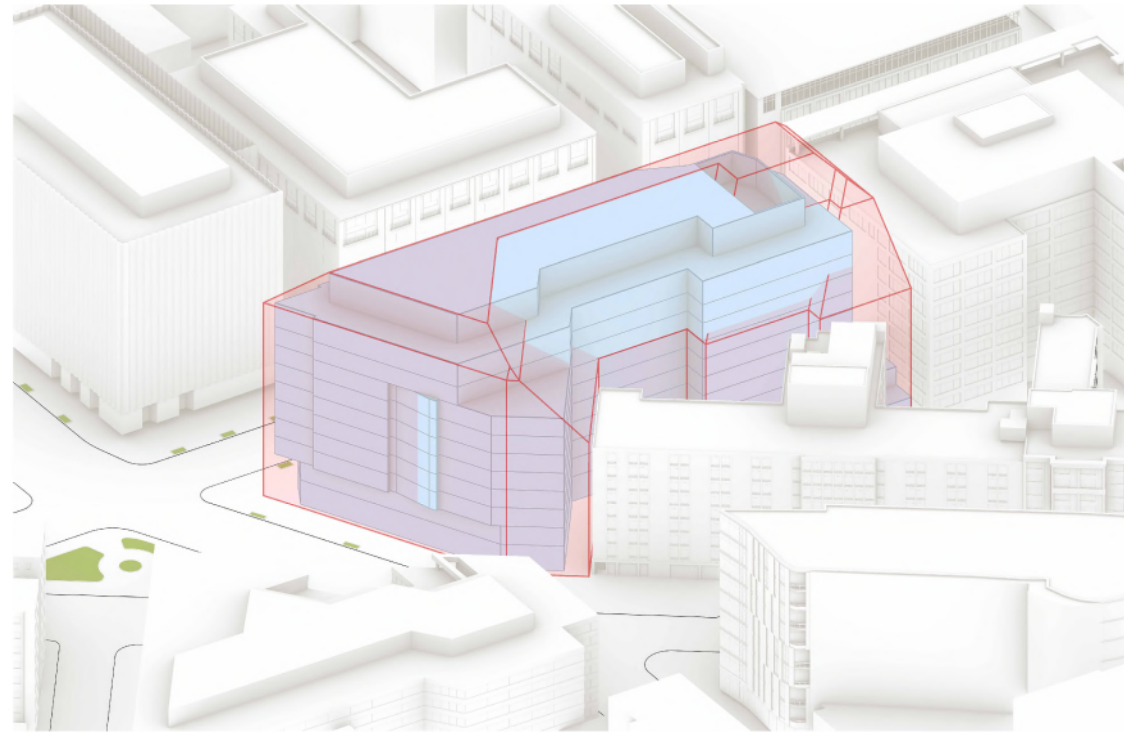
SHEET NUMBER:

**VDR A4.04**

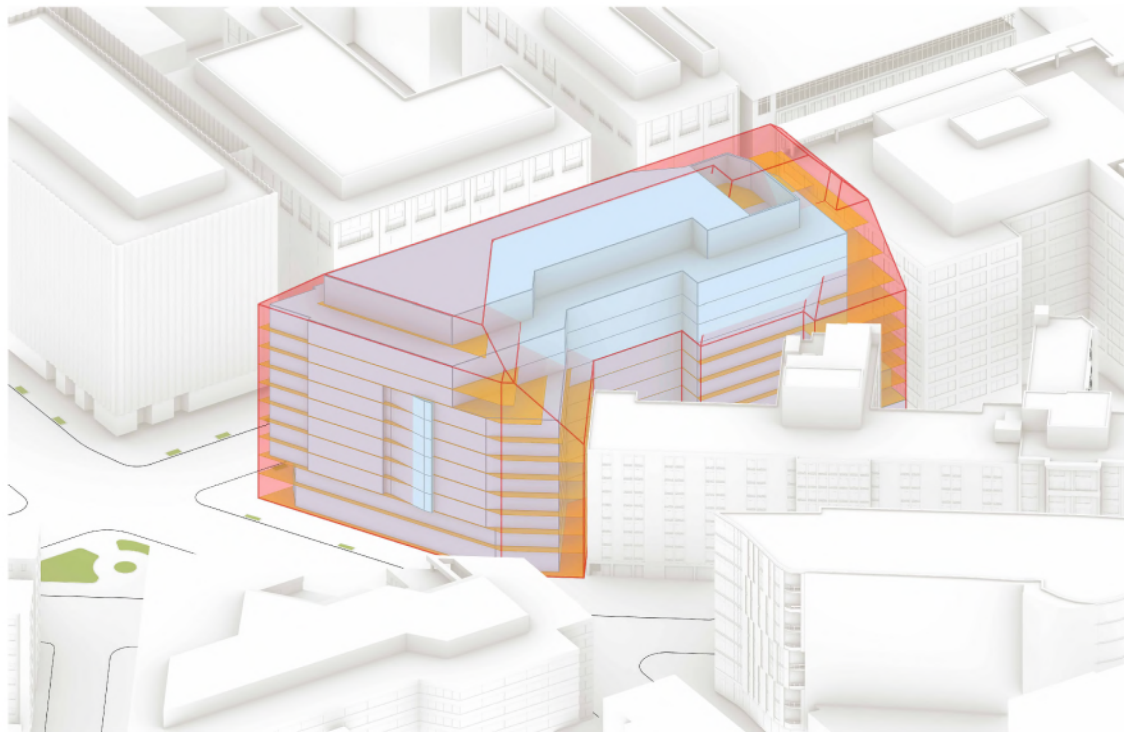
Copyright 2026 by Pickard Chilton Architects, Inc. All rights reserved.



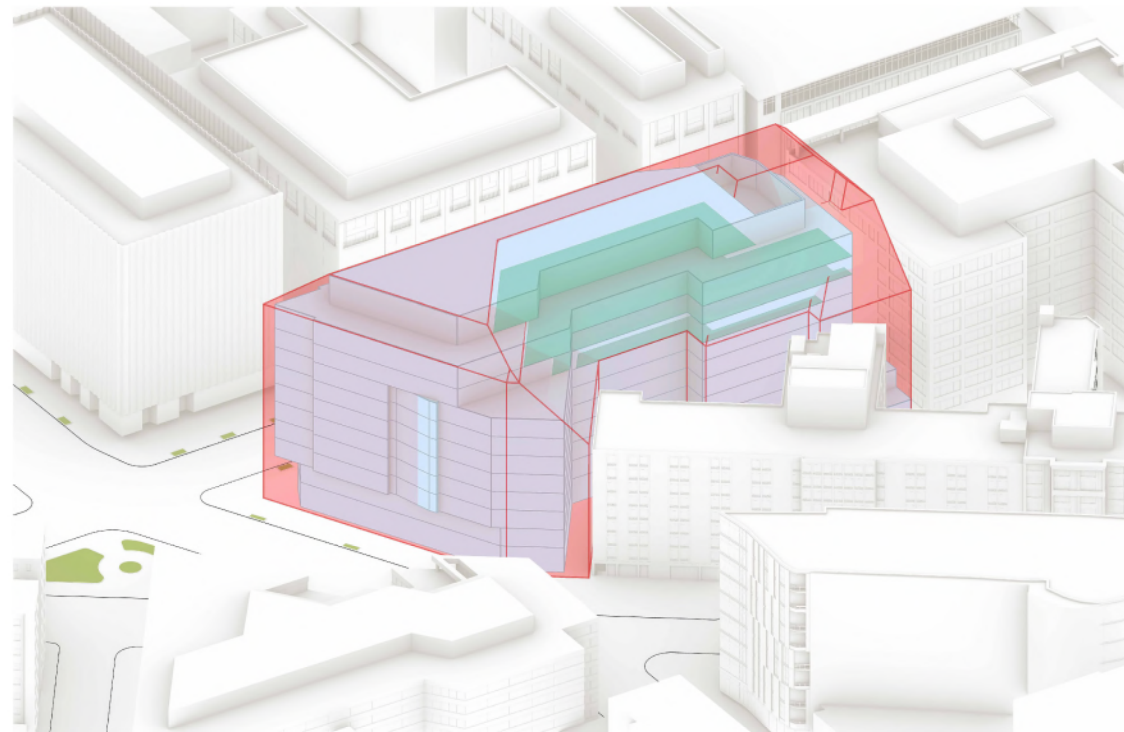
AS OF RIGHT BUILDING ENVELOPE



CONCEPTUAL MASSING OVERLAY ON AS OF RIGHT BUILDING ENVELOPE



CONCEPTUAL MASSING: AREA CARVED FROM AS OF RIGHT BUILDING ENVELOPE



CONCEPTUAL MASSING: AREA ADDED BEYOND AS OF RIGHT ENVELOPE

PICKARD CHILTON

2100 M STREET N.W.  
2100 M St. N.W.  
Washington, D.C. 20037

Owner  
**BXP**  
2200 Pennsylvania Ave NW  
Washington, DC 20037  
tel. 202.545.0800  
www.bxp.com

Design Consultant  
**Pickard Chilton**  
585 Chapel Street  
New Haven, Connecticut 06510  
tel. 203.766-8600  
www.pickarchilton.com

Architect of Record  
**Kendall/Heaton Associates**  
3050 Post Oak Boulevard, Suite 1000  
Houston, Texas 77002  
tel. 713.877.1192  
www.kendall-heaton.com

Landscape Architect  
**ParkerRodriguez**  
211 N Union Street, Suite 320  
Alexandria, Virginia 22314  
tel. 703.548.5010  
www.parkerrodriguez.com

Structural Engineer  
**Thornton Tomasetti**  
1330 Connecticut Avenue NW, Suite 300  
Washington, D.C. 20036  
tel. 202.593.6300  
www.thorntontomasetti.com

Mechanical and Electrical Engineer  
**GHT**  
1110 North Glebe Road, Suite 300  
Arlington, Virginia 22201  
tel. 703.243.1200  
www.ghitd.com

Civil Engineer  
**Wiles Mensch**  
100 M Street, SE, #320  
Washington, D.C. 20003  
tel. 202.638-4040  
www.wm-dc.com

Transportation Consultant  
**Wells + Associates**  
650 Massachusetts Avenue NW, Suite 600  
Washington, D.C. 20001  
tel. 202.978.5222  
www.wellsandassociates.com

Vertical Transportation  
**VDA**  
120 Eagle Rock Avenue, Suite 310  
East Hanover, New Jersey 07936  
tel. 973.994.9220  
www.vdassoc.com

REVISIONS

Design Development

This drawing is not for construction or bidding purposes. Pickard Chilton Architects, Inc. has prepared this drawing solely to communicate architectural design intent. Pickard Chilton Architects, Inc. is not the Architect of Record and therefore is not responsible for preparing construction documents or for technical, legal, or construction-related matters. Pickard Chilton Architects, Inc. is not responsible for nor does it make any representation concerning dimensional accuracy of this drawing or coordination of this drawing with documents prepared by other disciplines.

NOT FOR CONSTRUCTION

ZONING SETBACK DIAGRAM - AS OF RIGHT

PROJECT: 2530  
DATE: June 2026  
SCALE:

SHEET NUMBER:

**VDR A4.05**

Copyright 2026 by Pickard Chilton Architects, Inc. All rights reserved.

2100 M STREET N.W.  
2100 M St. N.W.  
Washington, D.C. 20037

Owner  
**BXP**  
2200 Pennsylvania Ave NW  
Washington, DC 20037  
tel. 202.545.0800  
www.bxp.com

Design Consultant  
**Pickard Chilton**  
585 Chapel Street  
New Haven, Connecticut 06510  
tel. 203.766-8600  
www.pickarchilton.com

Architect of Record  
**Kendall/Heaton Associates**  
2050 Post Oak Boulevard, Suite 1000  
Houston, Texas 77002  
tel. 713.877.1192  
www.kendall-heaton.com

Landscape Architect  
**ParkerRodriguez**  
211 N Union Street, Suite 320  
Alexandria, Virginia 22314  
tel. 703.548.5010  
www.parkerrodriguez.com

Structural Engineer  
**Thornton Tomasetti**  
1330 Connecticut Avenue NW, Suite 300  
Washington, D.C. 20036  
tel. 202.560.6300  
www.thorntontomasetti.com

Mechanical and Electrical Engineer  
**GHT**  
1110 North Glebe Road, Suite 300  
Arlington, Virginia 22201  
tel. 703.243.1200  
www.ghtinc.com

Civil Engineer  
**Wiles Mensch**  
100 M Street, SE, #320  
Washington, D.C. 20003  
tel. 202.638-4040  
www.wm-dc.com

Transportation Consultant  
**Wells + Associates**  
650 Massachusetts Avenue NW, Suite 600  
Washington, D.C. 20001  
tel. 202.978.5222  
www.wellsandassociates.com

Vertical Transportation  
**VDA**  
120 Eagle Rock Avenue, Suite 310  
East Hanover, New Jersey 07936  
tel. 973.994.9220  
www.vdassoc.com

REVISIONS

Design Development

This drawing is not for construction or bidding purposes. Pickard Chilton Architects, Inc. has prepared this drawing solely to communicate architectural design intent. Pickard Chilton Architects, Inc. is not the Architect of Record and therefore is not responsible for preparing construction documents or for technical, legal, or construction-related matters. Pickard Chilton Architects, Inc. is not responsible for nor does it make any representation concerning dimensional accuracy of this drawing or coordination of this drawing with documents prepared by other disciplines.

NOT FOR CONSTRUCTION

ZONING SETBACK DIAGRAM - FLOOR PLAN IMPACT

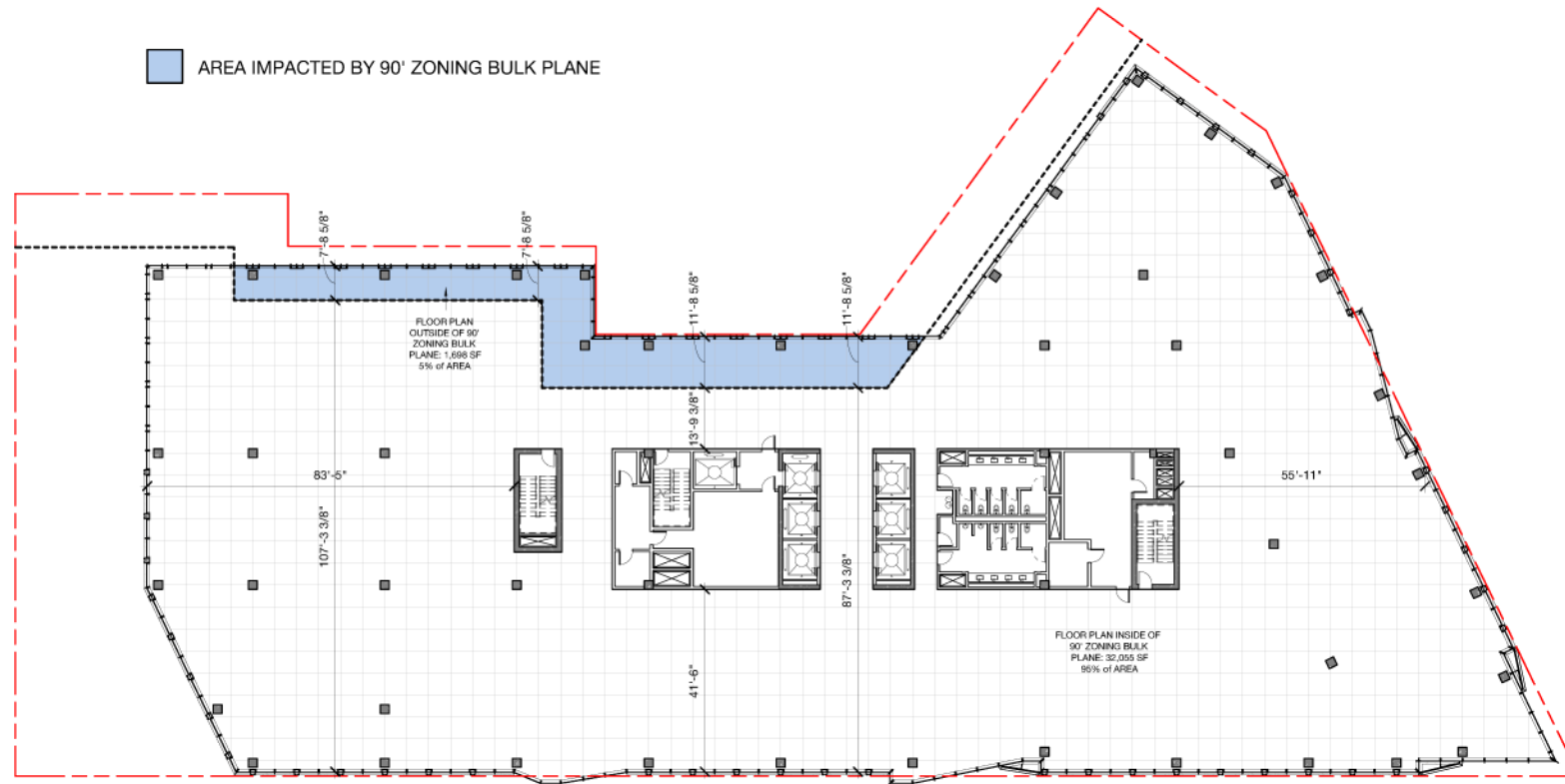
PROJECT: 2530  
DATE: June 2008  
SCALE: 1/16" = 1'-0"

SHEET NUMBER:

**VDR A4.06**

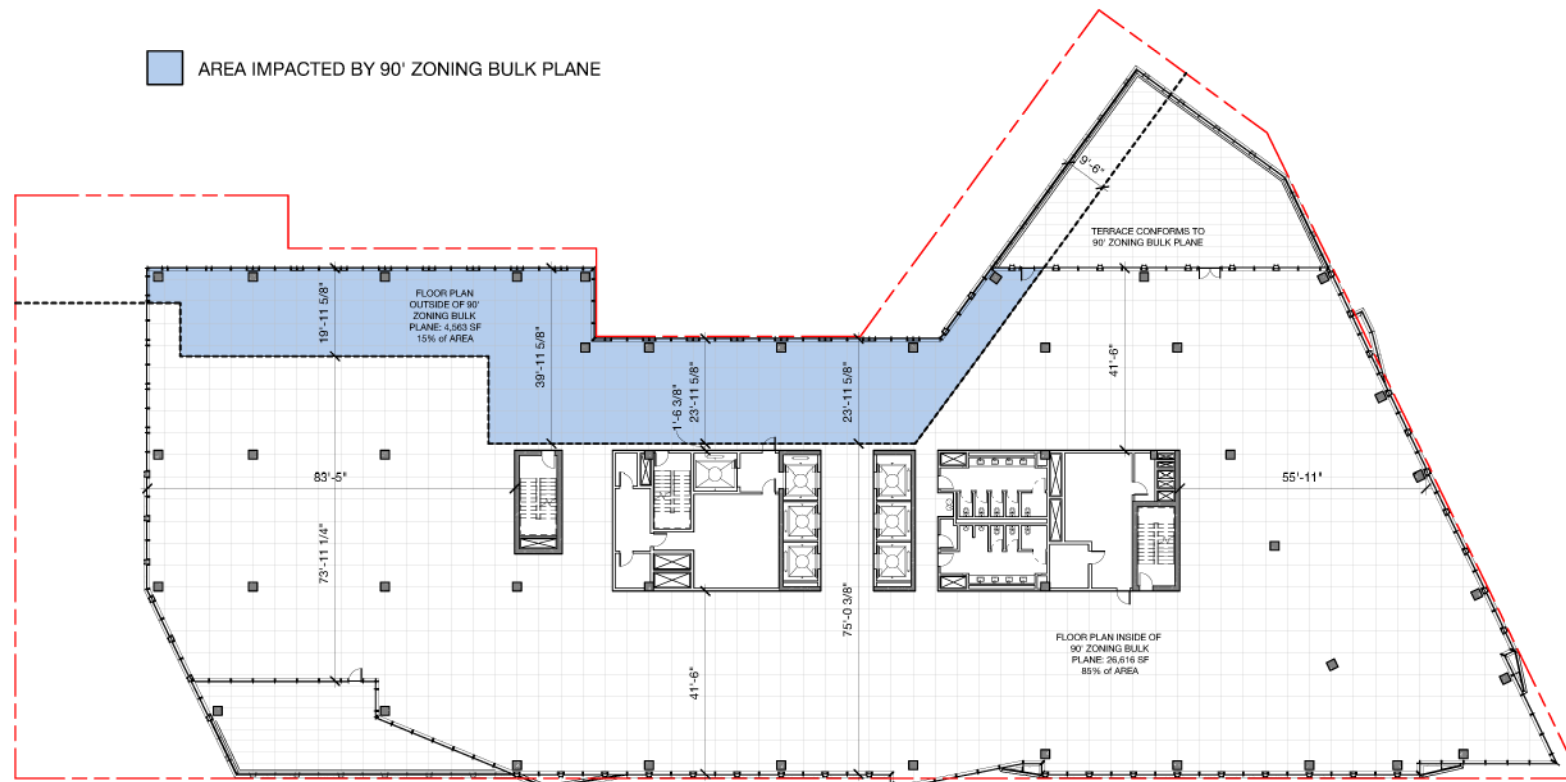
Copyright 2008 by Pickard Chilton Architects, Inc. All rights reserved.

AREA IMPACTED BY 90° ZONING BULK PLANE



1 VDR - LEVEL 08 PLAN - AS OF RIGHT OVERLAY  
1/16" = 1'-0"

AREA IMPACTED BY 90° ZONING BULK PLANE



2 VDR - LEVEL 08 PLAN - AS OF RIGHT OVERLAY  
1/16" = 1'-0"

2100 M STREET N.W.  
2100 M St. N.W.  
Washington, D.C. 20037

Owner  
**BXP**  
2200 Pennsylvania Ave NW  
Washington, DC 20037  
tel. 202.545.0800  
www.bxp.com

Design Consultant  
**Pickard Chilton**  
585 Chapel Street  
New Haven, Connecticut 06510  
tel. 203.766-8600  
www.pickarchilton.com

Architect of Record  
**Kendall/Heaton Associates**  
2050 Post Oak Boulevard, Suite 1000  
Houston, Texas 77002  
tel. 713.877.1192  
www.kendall-heaton.com

Landscape Architect  
**ParkerRodriguez**  
211 N Union Street, Suite 320  
Alexandria, Virginia 22314  
tel. 703.548.5010  
www.parkerrodriguez.com

Structural Engineer  
**Thornton Tomasetti**  
1330 Connecticut Avenue NW, Suite 300  
Washington, D.C. 20036  
tel. 202.593.6300  
www.thorntontomasetti.com

Mechanical and Electrical Engineer  
**GHT**  
1110 North Glebe Road, Suite 300  
Arlington, Virginia 22201  
tel. 703.243.1200  
www.ghtinc.com

Civil Engineer  
**Wiles Mensch**  
100 M Street, SE, #320  
Washington, D.C. 20003  
tel. 202.638-4040  
www.wm-dc.com

Transportation Consultant  
**Wells + Associates**  
650 Massachusetts Avenue NW, Suite 600  
Washington, D.C. 20001  
tel. 202.978.5222  
www.wellsandassociates.com

Vertical Transportation  
**VDA**  
120 Eagle Rock Avenue, Suite 310  
East Hanover, New Jersey 07936  
tel. 973.594.9220  
www.vdassoc.com

REVISIONS

Design Development

This drawing is not for construction or bidding purposes. Pickard Chilton Architects, Inc. has prepared this drawing solely to communicate architectural design intent. Pickard Chilton Architects, Inc. is not the Architect of Record and therefore is not responsible for preparing construction documents or for technical, legal, or construction-related matters. Pickard Chilton Architects, Inc. is not responsible for nor does it make any representation concerning dimensional accuracy of this drawing or coordination of this drawing with documents prepared by other disciplines.

NOT FOR CONSTRUCTION

ZONING SETBACK DIAGRAM - FLOOR PLAN IMPACT

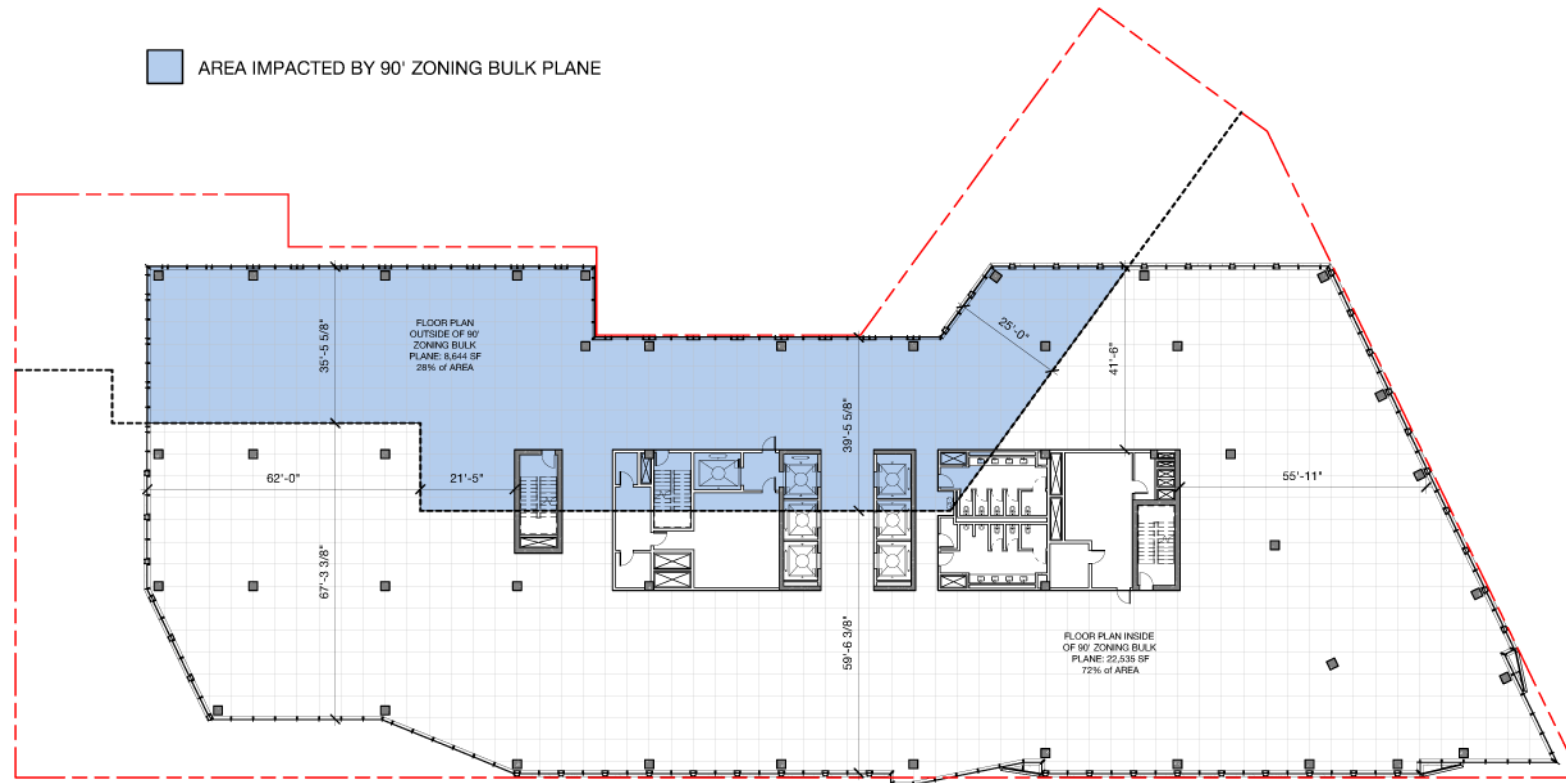
PROJECT: 2530  
DATE: June 2008  
SCALE: 1/16" = 1'-0"

SHEET NUMBER:

**VDR A4.07**

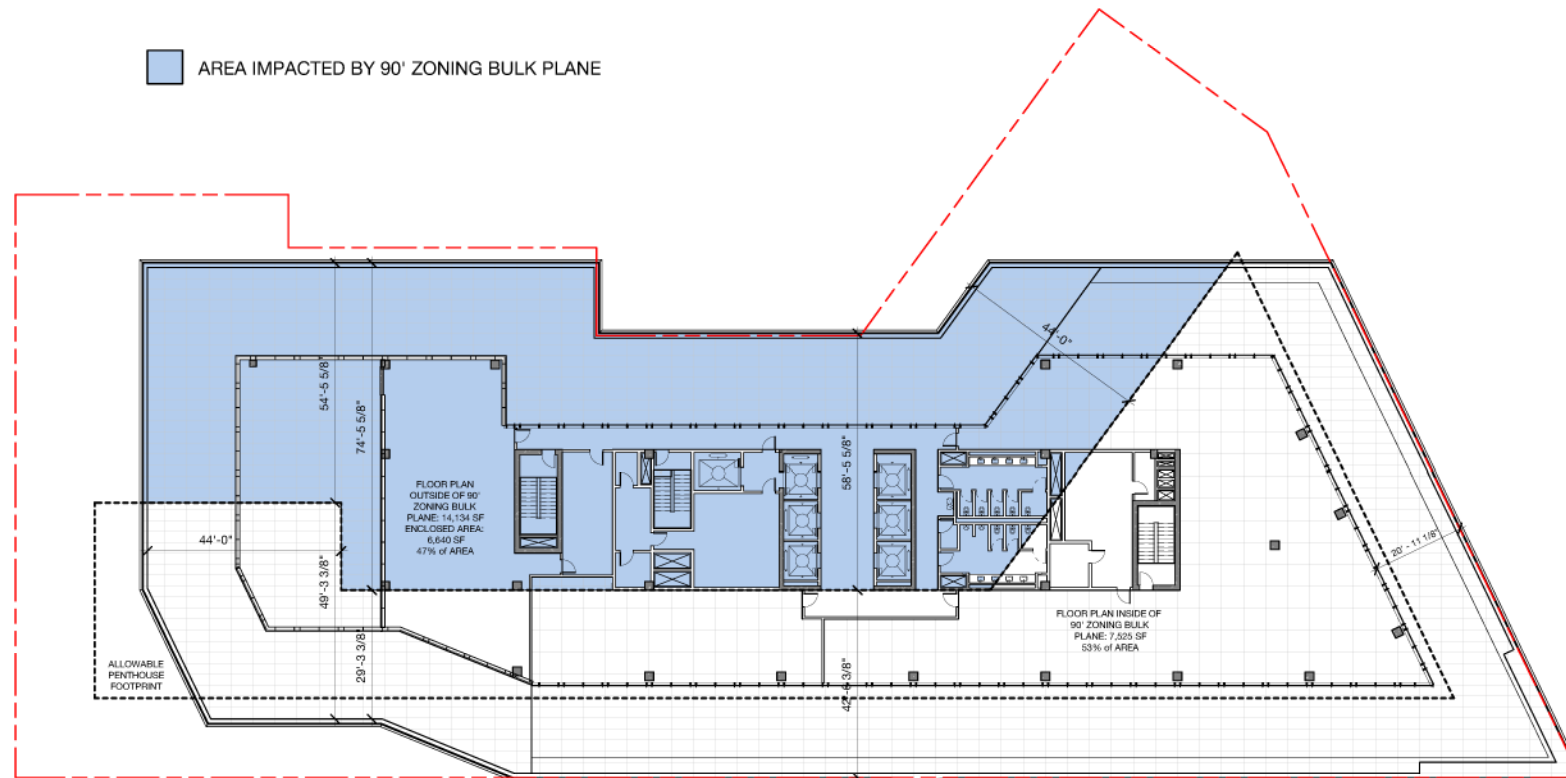
Copyright 2008 by Pickard Chilton Architects, Inc. All rights reserved.

AREA IMPACTED BY 90' ZONING BULK PLANE



1 VDR - LEVEL 10 PLAN - AS OF RIGHT OVERLAY  
1/16" = 1'-0"

AREA IMPACTED BY 90' ZONING BULK PLANE



2 VDR - LEVEL 11 (PENTHOUSE) PLAN - AS OF RIGHT OVERLAY  
1/16" = 1'-0"

2100 M STREET N.W.  
2100 M St. N.W.  
Washington, D.C. 20037

Owner  
**BXP**  
2200 Pennsylvania Ave NW  
Washington, DC 20037  
tel. 202.545.0800  
www.bxp.com

Design Consultant  
**Pickard Chilton**  
585 Chapel Street  
New Haven, Connecticut 06510  
tel. 203.766-8600  
www.pickarchilton.com

Architect of Record  
**Kendall/Heaton Associates**  
2050 Post Oak Boulevard, Suite 1000  
Houston, Texas 77002  
tel. 713.877.1192  
www.kendall-heaton.com

Landscape Architect  
**ParkerRodriguez**  
211 N Union Street, Suite 320  
Alexandria, Virginia 22314  
tel. 703.548.5010  
www.parkerrodriguez.com

Structural Engineer  
**Thornton Tomasetti**  
1330 Connecticut Avenue NW, Suite 300  
Washington, D.C. 20036  
tel. 202.580.6300  
www.thorntontomasetti.com

Mechanical and Electrical Engineer  
**GHT**  
1110 North Glebe Road, Suite 300  
Arlington, Virginia 22201  
tel. 703.243.1200  
www.ghtllc.com

Civil Engineer  
**Wiles Mensch**  
100 M Street, SE, #320  
Washington, D.C. 20003  
tel. 202.638-4040  
www.wm-dc.com

Transportation Consultant  
**Wells + Associates**  
650 Massachusetts Avenue NW, Suite 600  
Washington, D.C. 20001  
tel. 202.978.5222  
www.wellsandassociates.com

Vertical Transportation  
**VDA**  
120 Eagle Rock Avenue, Suite 310  
East Hanover, New Jersey 07936  
tel. 973.994.9220  
www.vdassoc.com

REVISIONS

Design Development

This drawing is not for construction or bidding purposes. Pickard Chilton Architects, Inc. has prepared this drawing solely to communicate architectural design intent. Pickard Chilton Architects, Inc. is not the Architect of Record and therefore is not responsible for preparing construction documents or for technical, legal, or construction-related matters. Pickard Chilton Architects, Inc. is not responsible for nor does it make any representation concerning dimensional accuracy of this drawing or coordination of this drawing with documents prepared by other disciplines.

NOT FOR CONSTRUCTION

ZONING SETBACK DIAGRAM - SECTIONS

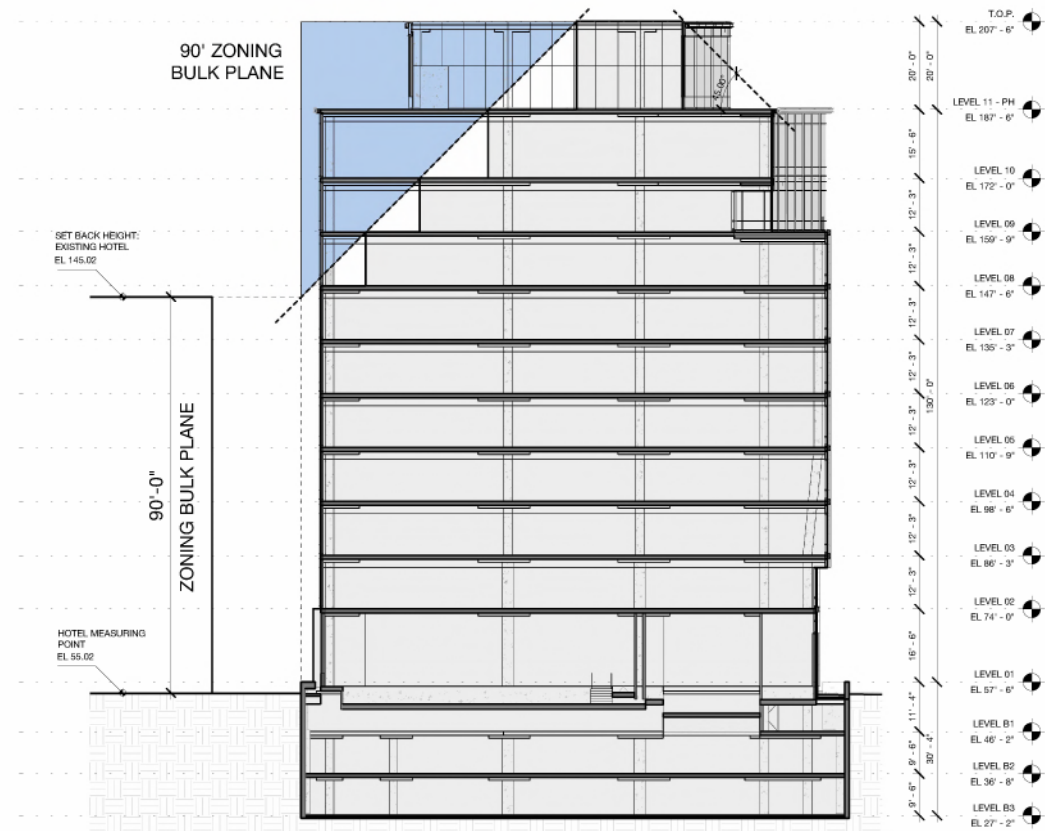
PROJECT: 2530  
DATE: June 2008  
SCALE: As Indicated

SHEET NUMBER:

**VDR A4.08**

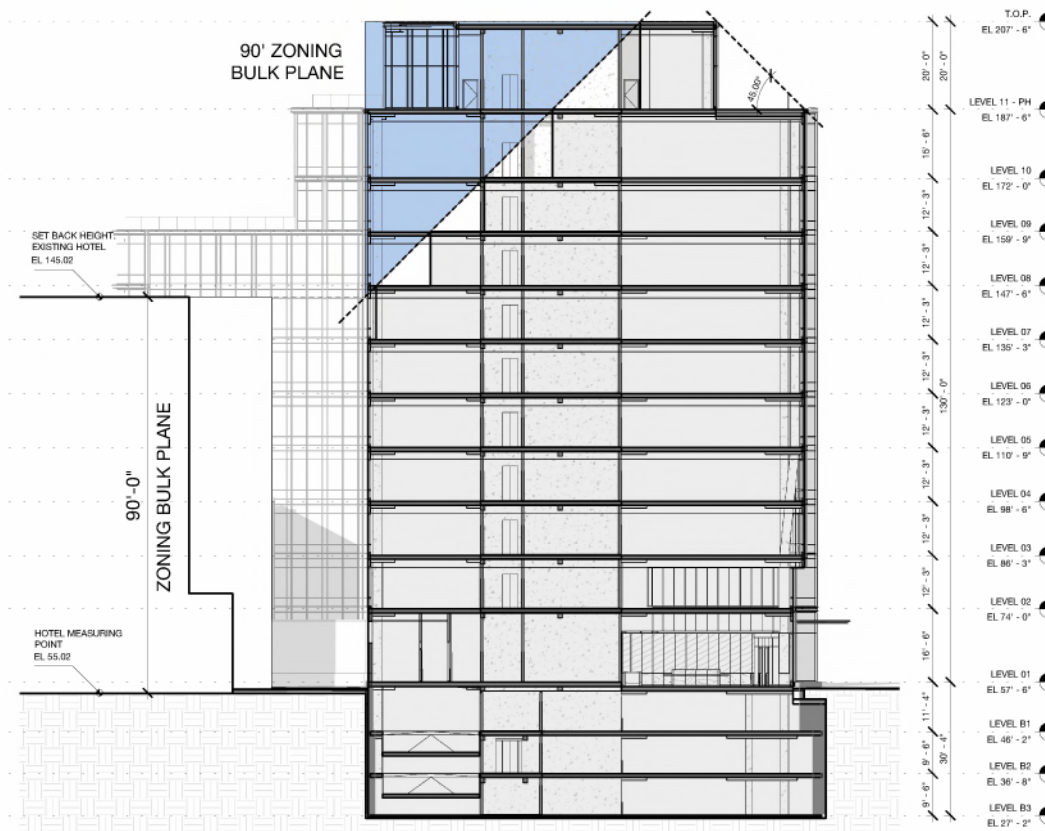
Copyright 2008 by Pickard Chilton Architects, Inc. All rights reserved.

AREA IMPACTED BY 90' ZONING BULK PLANE

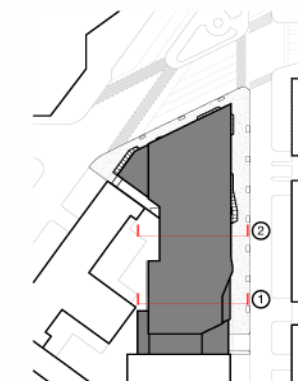


1 VDR - DIAGRAMMATIC SECTION 1 - AS OF RIGHT OVERLAY  
1/16" = 1'-0"

AREA IMPACTED BY 90' ZONING BULK PLANE



2 VDR - DIAGRAMMATIC SECTION 2 - AS OF RIGHT OVERLAY  
1/16" = 1'-0"



2100 M STREET N.W.  
2100 M St. N.W.  
Washington, D.C. 20037

Owner  
**BXP**  
2200 Pennsylvania Ave NW  
Washington, DC 20037  
tel. 202.545.0800  
www.bxp.com

Design Consultant  
**Pickard Chilton**  
585 Chapel Street  
New Haven, Connecticut 06510  
tel. 203.766-8600  
www.pickardchilton.com

Architect of Record  
**Kendall/Heaton Associates**  
2050 Post Oak Boulevard, Suite 1000  
Houston, Texas 77002  
tel. 713.877.1192  
www.kendall-heaton.com

Landscape Architect  
**ParkerRodriguez**  
211 N Union Street, Suite 320  
Alexandria, Virginia 22314  
tel. 703.548.5010  
www.parkerrodriguez.com

Structural Engineer  
**Thornton Tomasetti**  
1330 Connecticut Avenue NW, Suite 300  
Washington, D.C. 20036  
tel. 202.593.6300  
www.thorntontomasetti.com

Mechanical and Electrical Engineer  
**GHT**  
1110 North Glebe Road, Suite 300  
Arlington, Virginia 22201  
tel. 703.243.1200  
www.ghtllc.com

Civil Engineer  
**Wiles Mensch**  
100 M Street, SE, #320  
Washington, D.C. 20003  
tel. 202.638-4040  
www.wm-dc.com

Transportation Consultant  
**Wells + Associates**  
650 Massachusetts Avenue NW, Suite 600  
Washington, D.C. 20001  
tel. 202.978.5222  
www.wellsandassociates.com

Vertical Transportation  
**VDA**  
120 Eagle Rock Avenue, Suite 310  
East Hanover, New Jersey 07936  
tel. 973.594.9220  
www.vdassoc.com

REVISIONS

Design Development

This drawing is not for construction or bidding purposes. Pickard Chilton Architects, Inc. has prepared this drawing solely to communicate architectural design intent. Pickard Chilton Architects, Inc. is not the Architect of Record and therefore is not responsible for preparing construction documents or for technical, legal, or construction-related matters. Pickard Chilton Architects, Inc. is not responsible for nor does it make any representation concerning dimensional accuracy of this drawing or coordination of this drawing with documents prepared by other disciplines.

NOT FOR CONSTRUCTION

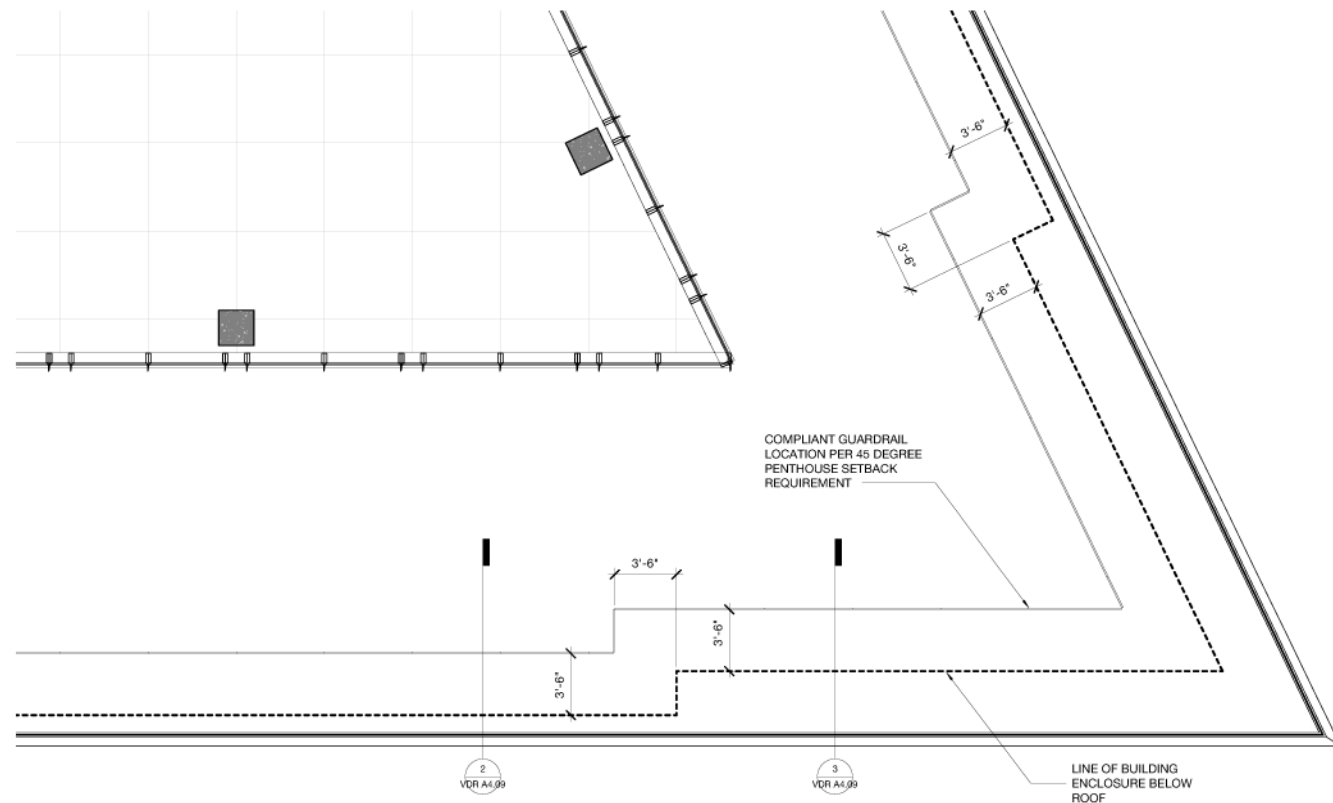
ZONING SETBACK DIAGRAM - PENTHOUSE

PROJECT: 2530  
DATE: June 2008  
SCALE: As Indicated

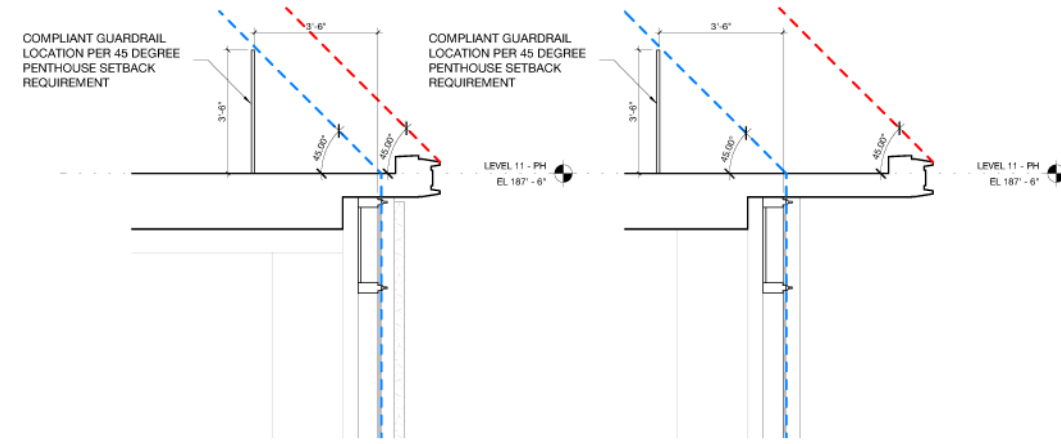
SHEET NUMBER:

**VDR A4.09**

Copyright 2008 by Pickard Chilton Architects, Inc. All rights reserved.

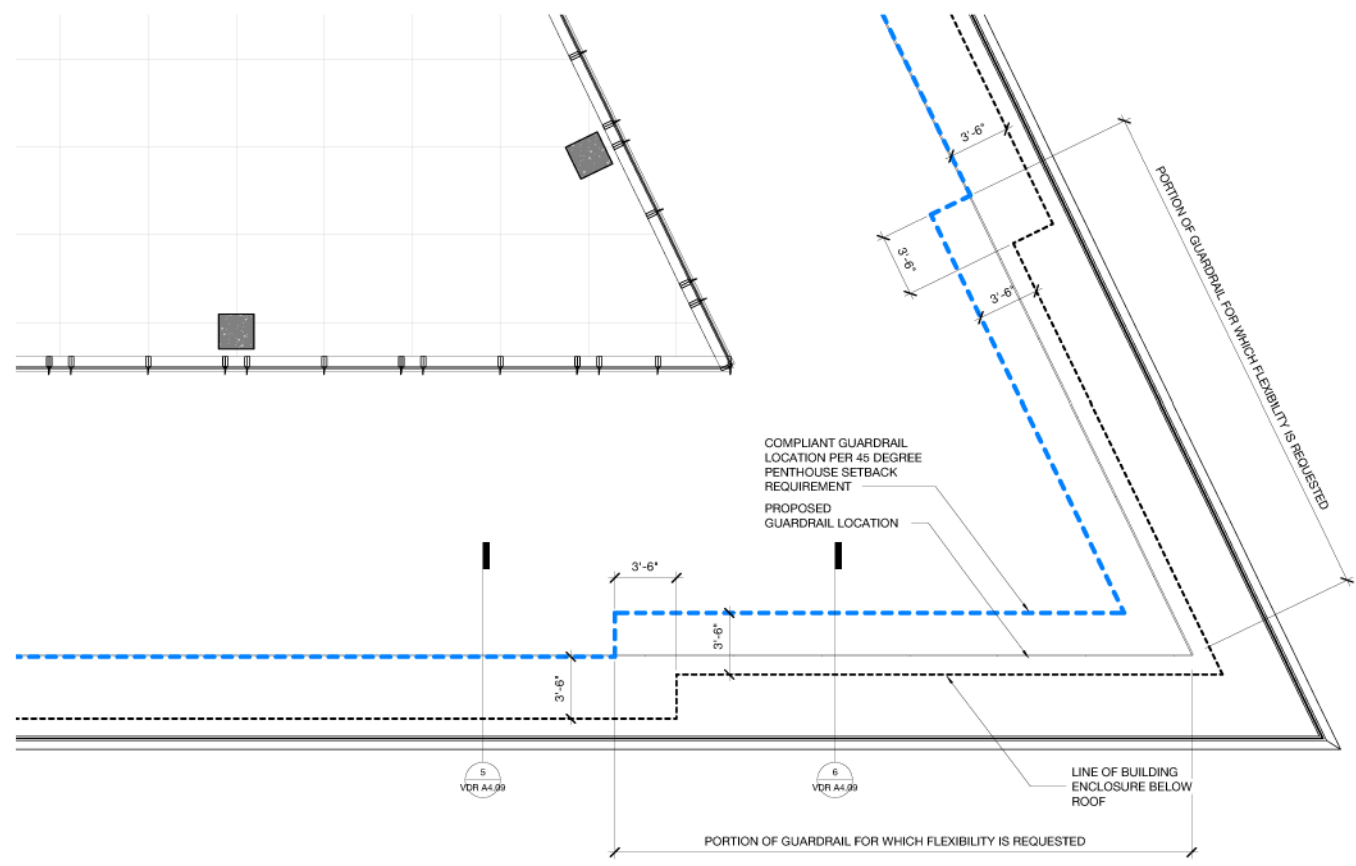


1 VDR - LEVEL 11 ENLARGED PLAN - COMPLIANT GUARDRAIL SETBACK AT NORTHEAST PROW  
1/4" = 1'-0"

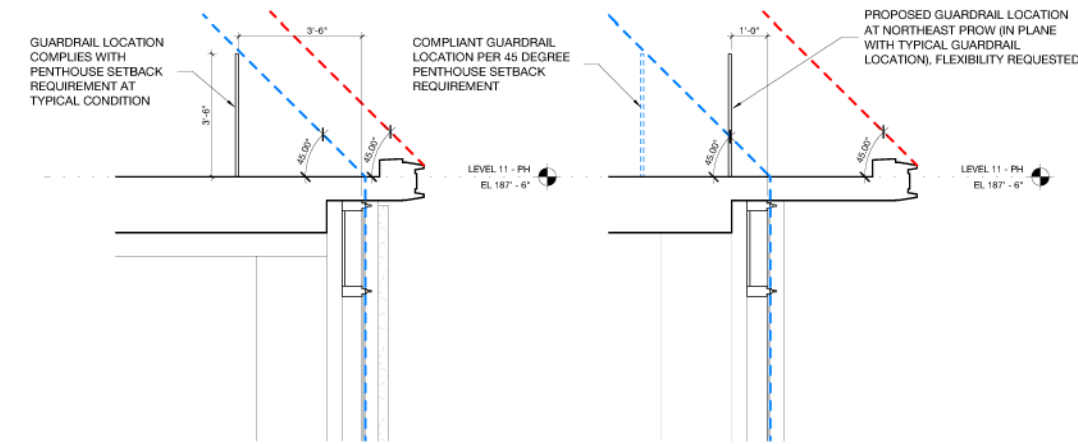


2 VDR - COMPLIANT GUARDRAIL SETBACK AT TYPICAL CONDITION  
1/2" = 1'-0"

3 VDR - COMPLIANT GUARDRAIL SETBACK AT NORTHEAST PROW  
1/2" = 1'-0"



4 VDR - LEVEL 11 ENLARGED PLAN - PROPOSED GUARDRAIL SETBACK AT NORTHEAST PROW  
1/4" = 1'-0"



5 VDR - PROPOSED GUARDRAIL SETBACK AT TYPICAL CONDITION  
1/2" = 1'-0"

6 VDR - PROPOSED GUARDRAIL SETBACK AT NORTHEAST PROW  
1/2" = 1'-0"