

2100 M STREET N.W.  
2100 M St. N.W.  
Washington, D.C. 20037

Owner  
**BXP**  
2200 Pennsylvania Ave NW  
Washington, DC 20037  
tel. 202.545.0800  
www.bxp.com

Design Consultant  
**Pickard Chilton**  
585 Chapel Street  
New Haven, Connecticut 06510  
tel. 203.766-8600  
www.pickarchilton.com

Architect of Record  
**Kendall/Heaton Associates**  
2050 Post Oak Boulevard, Suite 1000  
Houston, Texas 77002  
tel. 713.877.1192  
www.kendall-heaton.com

Landscape Architect  
**ParkerRodriguez**  
211 N Union Street, Suite 320  
Alexandria, Virginia 22314  
tel. 703.548.5010  
www.parkerrodriguez.com

Structural Engineer  
**Thornton Tomasetti**  
1330 Connecticut Avenue NW, Suite 300  
Washington, D.C. 20036  
tel. 202.560.6300  
www.thorntontomasetti.com

Mechanical and Electrical Engineer  
**GHT**  
1110 North Glebe Road, Suite 300  
Arlington, Virginia 22201  
tel. 703.243.1200  
www.ghtinc.com

Civil Engineer  
**Wiles Mensch**  
100 M Street SE, #320  
Washington, D.C. 20003  
tel. 202.638-4040  
www.wm-dc.com

Transportation Consultant  
**Wells + Associates**  
650 Massachusetts Avenue NW, Suite 600  
Washington, D.C. 20001  
tel. 202.978.5222  
www.wellsandassociates.com

Vertical Transportation  
**VDA**  
120 Eagle Rock Avenue, Suite 310  
East Hanover, New Jersey 07936  
tel. 973.594.9220  
www.vdassoc.com

REVISIONS

**Design Development**  
This drawing is not for construction or bidding purposes. Pickard Chilton Architects, Inc. has prepared this drawing solely to communicate architectural design intent. Pickard Chilton Architects, Inc. is not the Architect of Record and therefore is not responsible for preparing construction documents or for technical, legal, or construction-related matters. Pickard Chilton Architects, Inc. is not responsible for nor does it make any representation concerning dimensional accuracy of this drawing or coordination of this drawing with documents prepared by other disciplines.

NOT FOR CONSTRUCTION

SITE PLAN

PROJECT: 2530  
DATE: June 2008  
SCALE: 1/16" = 1'-0"  
SHEET NUMBER:  
**VDR A2.00**  
ZONING COMMISSION  
District of Columbia  
CASE NO. 26-05  
EXHIBIT NO. 8A4  
Copyright 2008 by Pickard Chilton Architects, Inc. All rights reserved.

2100 M STREET N.W.  
2100 M St. N.W.  
Washington, D.C. 20037

Owner  
**BXP**  
2200 Pennsylvania Ave NW  
Washington, DC 20037  
tel. 202.545.0800  
www.bxp.com

Design Consultant  
**Pickard Chilton**  
585 Chapel Street  
New Haven, Connecticut 06510  
tel. 203.766.8600  
www.pickarchilton.com

Architect of Record  
**Kendall/Heaton Associates**  
3050 Post Oak Boulevard, Suite 1000  
Houston, Texas 77002  
tel. 713.877.1192  
www.kendall-heaton.com

Landscape Architect  
**ParkerRodriguez**  
211 N Union Street, Suite 320  
Alexandria, Virginia 22314  
tel. 703.548.5010  
www.parkerrodriguez.com

Structural Engineer  
**Thornton Tomasetti**  
1330 Connecticut Avenue NW, Suite 300  
Washington, D.C. 20036  
tel. 202.590.6300  
www.thorntontomasetti.com

Mechanical and Electrical Engineer  
**GHT**  
1110 North Glebe Road, Suite 300  
Arlington, Virginia 22201  
tel. 703.243.1200  
www.ghtllc.com

Civil Engineer  
**Wies Mensch**  
100 M Street, SE, #120  
Washington, D.C. 20003  
tel. 202.638.4040  
www.wm-dc.com

Transportation Consultant  
**Wells + Associates**  
650 Massachusetts Avenue NW, Suite 600  
Washington, D.C. 20001  
tel. 202.978.5222  
www.wellsandassociates.com

Vertical Transportation  
**VDA**  
120 Eagle Rock Avenue, Suite 310  
East Hanover, New Jersey 07936  
tel. 973.994.9220  
www.vdassoc.com

REVISIONS

Design Development

This drawing is not for construction or bidding purposes. Pickard Chilton Architects, Inc. has prepared this drawing solely to communicate architectural design intent. Pickard Chilton Architects, Inc. is not the Architect of Record and therefore is not responsible for preparing construction documents or for technical, legal, or construction-related matters. Pickard Chilton Architects, Inc. is not responsible for nor does it make any representation concerning dimensional accuracy of this drawing or coordination of this drawing with documents prepared by other disciplines.

NOT FOR CONSTRUCTION

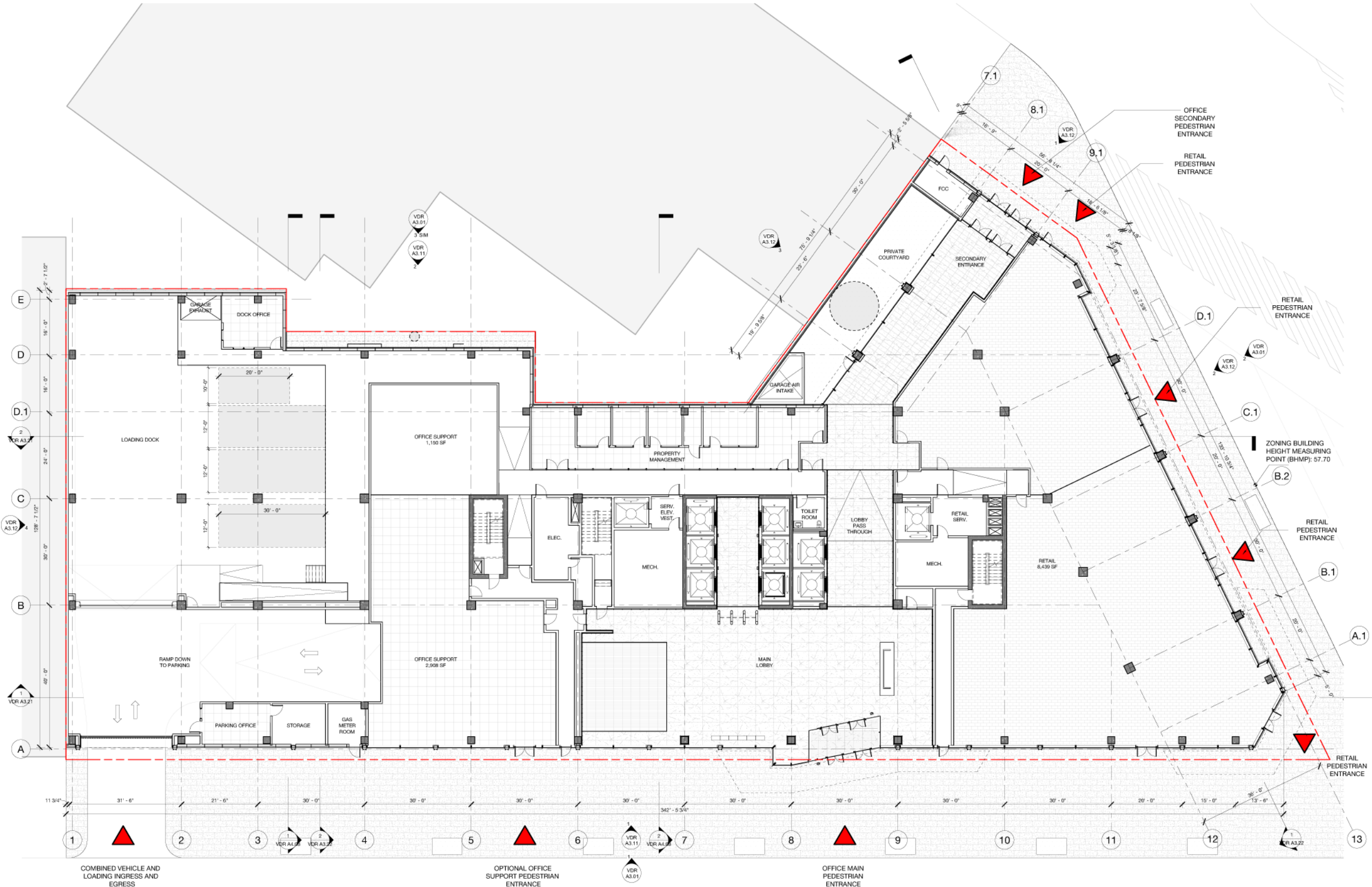
LEVEL 1 PLAN

PROJECT: 2530  
DATE: June 2008  
SCALE: 3/32" = 1'-0"

SHEET NUMBER:

**VDR A2.01**

Copyright 2008 by Pickard Chilton Architects, Inc. All rights reserved.



\* INTERIOR FLOOR PLANS ARE CONCEPTUAL AND SUBJECT TO CHANGE  
\* LOCATION OF RETAIL ENTRANCES ARE CONCEPTUAL AND SUBJECT TO CHANGE BASED ON RETAIL DEMISING PLAN AND TENANT NEEDS.

1 VDR - LEVEL 01 PLAN  
3/32" = 1'-0"

2100 M STREET N.W.  
2100 M St. N.W.  
Washington, D.C. 20037

Owner  
**BXP**  
2200 Pennsylvania Ave NW  
Washington, DC 20037  
tel. 202.545.0800  
www.bxp.com

Design Consultant  
**Pickard Chilton**  
585 Chapel Street  
New Haven, Connecticut 06510  
tel. 203.766.8600  
www.pickardchilton.com

Architect of Record  
**Kendall/Heaton Associates**  
2050 Post Oak Boulevard, Suite 1000  
Houston, Texas 77002  
tel. 713.877.1192  
www.kendall-heaton.com

Landscape Architect  
**ParkerRodriguez**  
211 N Union Street, Suite 320  
Alexandria, Virginia 22314  
tel. 703.548.5010  
www.parkerrodriguez.com

Structural Engineer  
**Thornton Tomasetti**  
1330 Connecticut Avenue NW, Suite 300  
Washington, D.C. 20036  
tel. 202.560.6300  
www.thorntontomasetti.com

Mechanical and Electrical Engineer  
**GHT**  
1110 North Glebe Road, Suite 300  
Arlington, Virginia 22201  
tel. 703.243.1200  
www.ghtllc.com

Civil Engineer  
**Wiles Mensch**  
100 M Street, SE, #320  
Washington, D.C. 20003  
tel. 202.638.4040  
www.wm-dc.com

Transportation Consultant  
**Wells + Associates**  
650 Massachusetts Avenue NW, Suite 600  
Washington, D.C. 20001  
tel. 202.978.5222  
www.wellsandassociates.com

Vertical Transportation  
**VDA**  
120 Eagle Rock Avenue, Suite 310  
East Hanover, New Jersey 07936  
tel. 973.994.9220  
www.vdassoc.com

REVISIONS

Design Development

This drawing is not for construction or bidding purposes. Pickard Chilton Architects, Inc. has prepared this drawing solely to communicate architectural design intent. Pickard Chilton Architects, Inc. is not the Architect of Record and therefore is not responsible for preparing construction documents or for technical, legal, or construction-related matters. Pickard Chilton Architects, Inc. is not responsible for nor does it make any representation concerning dimensional accuracy of this drawing or coordination of this drawing with documents prepared by other disciplines.

NOT FOR CONSTRUCTION

LEVEL 2 PLAN

PROJECT: 2530  
DATE: June 2008  
SCALE: 3/32" = 1'-0"

SHEET NUMBER:

**VDR A2.02**

Copyright 2008 by Pickard Chilton Architects, Inc. All rights reserved.



\* INTERIOR FLOOR PLANS ARE CONCEPTUAL AND SUBJECT TO CHANGE

2100 M STREET N.W.  
2100 M St. N.W.  
Washington, D.C. 20037

Owner  
**BXP**  
2200 Pennsylvania Ave NW  
Washington, DC 20037  
tel. 202.545.0800  
www.bxp.com

Design Consultant  
**Pickard Chilton**  
585 Chapel Street  
New Haven, Connecticut 06510  
tel. 203.766-8600  
www.pickardchilton.com

Architect of Record  
**Kendall/Heaton Associates**  
2050 Post Oak Boulevard, Suite 1000  
Houston, Texas 77002  
tel. 713.877.1192  
www.kendall-heaton.com

Landscape Architect  
**ParkerRodriguez**  
211 N Union Street, Suite 320  
Alexandria, Virginia 22314  
tel. 703.548.5010  
www.parkerrodriguez.com

Structural Engineer  
**Thornton Tomasetti**  
1330 Connecticut Avenue NW, Suite 300  
Washington, D.C. 20036  
tel. 202.560.6300  
www.thorntontomasetti.com

Mechanical and Electrical Engineer  
**GHT**  
1110 North Glebe Road, Suite 300  
Arlington, Virginia 22201  
tel. 703.243.1200  
www.ghtinc.com

Civil Engineer  
**Wiles Mensch**  
100 M Street, SE, #320  
Washington, D.C. 20003  
tel. 202.638-4040  
www.wm-dc.com

Transportation Consultant  
**Wells + Associates**  
650 Massachusetts Avenue NW, Suite 600  
Washington, D.C. 20001  
tel. 202.978.5222  
www.wellsandassociates.com

Vertical Transportation  
**VDA**  
120 Eagle Rock Avenue, Suite 310  
East Hanover, New Jersey 07936  
tel. 973.994.9220  
www.vdassoc.com

REVISIONS

Design Development

This drawing is not for construction or bidding purposes. Pickard Chilton Architects, Inc. has prepared this drawing solely to communicate architectural design intent. Pickard Chilton Architects, Inc. is not the Architect of Record and therefore is not responsible for preparing construction documents or for technical, legal, or construction-related matters. Pickard Chilton Architects, Inc. is not responsible for nor does it make any representation concerning dimensional accuracy of this drawing or coordination of this drawing with documents prepared by other disciplines.

NOT FOR CONSTRUCTION

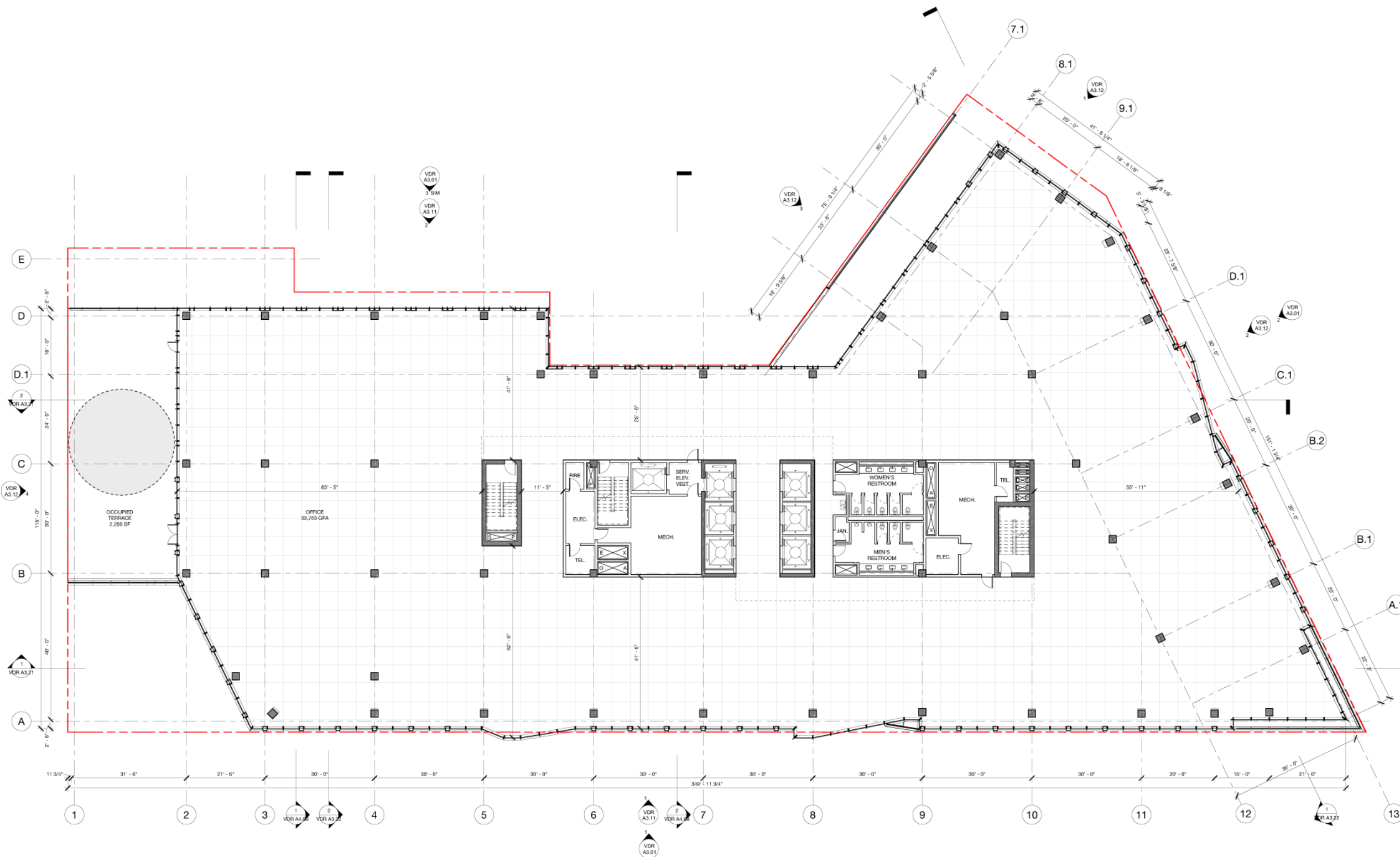
LEVEL 3 PLAN

PROJECT: 2530  
DATE: June 2008  
SCALE: 3/32" = 1'-0"

SHEET NUMBER:

**VDR A2.03**

Copyright 2008 by Pickard Chilton Architects, Inc. All rights reserved.





2100 M STREET N.W.  
2100 M St. N.W.  
Washington, D.C. 20037

Owner  
**BXP**  
2200 Pennsylvania Ave NW  
Washington, DC 20037  
tel. 202.545.0800  
www.bxp.com

Design Consultant  
**Pickard Chilton**  
585 Chapel Street  
New Haven, Connecticut 06510  
tel. 203.766-8600  
www.pickarchilton.com

Architect of Record  
**Kendall/Heaton Associates**  
3050 Post Oak Boulevard, Suite 1000  
Houston, Texas 77002  
tel. 713.877.1192  
www.kendall-heaton.com

Landscape Architect  
**ParkerRodriguez**  
211 N Union Street, Suite 320  
Alexandria, Virginia 22314  
tel. 703.548.5010  
www.parkerrodriguez.com

Structural Engineer  
**Thornton Tomasetti**  
1330 Connecticut Avenue NW, Suite 300  
Washington, D.C. 20036  
tel. 202.560.6300  
www.thorntontomasetti.com

Mechanical and Electrical Engineer  
**GHT**  
1110 North Glebe Road, Suite 300  
Arlington, Virginia 22201  
tel. 703.243.1200  
www.ghtllc.com

Civil Engineer  
**Wiles Mensch**  
100 M Street, SE, #320  
Washington, D.C. 20003  
tel. 202.638-4040  
www.wm-dc.com

Transportation Consultant  
**Wells + Associates**  
650 Massachusetts Avenue NW, Suite 600  
Washington, D.C. 20001  
tel. 202.978.5222  
www.wellsandassociates.com

Vertical Transportation  
**VDA**  
120 Eagle Rock Avenue, Suite 310  
East Hanover, New Jersey 07936  
tel. 973.994.9220  
www.vdassoc.com

REVISIONS

Design Development

This drawing is not for construction or bidding purposes. Pickard Chilton Architects, Inc. has prepared this drawing solely to communicate architectural design intent. Pickard Chilton Architects, Inc. is not the Architect of Record and therefore is not responsible for preparing construction documents or for technical, legal, or construction-related matters. Pickard Chilton Architects, Inc. is not responsible for nor does it make any representation concerning dimensional accuracy of this drawing or coordination of this drawing with documents prepared by other disciplines.

NOT FOR CONSTRUCTION

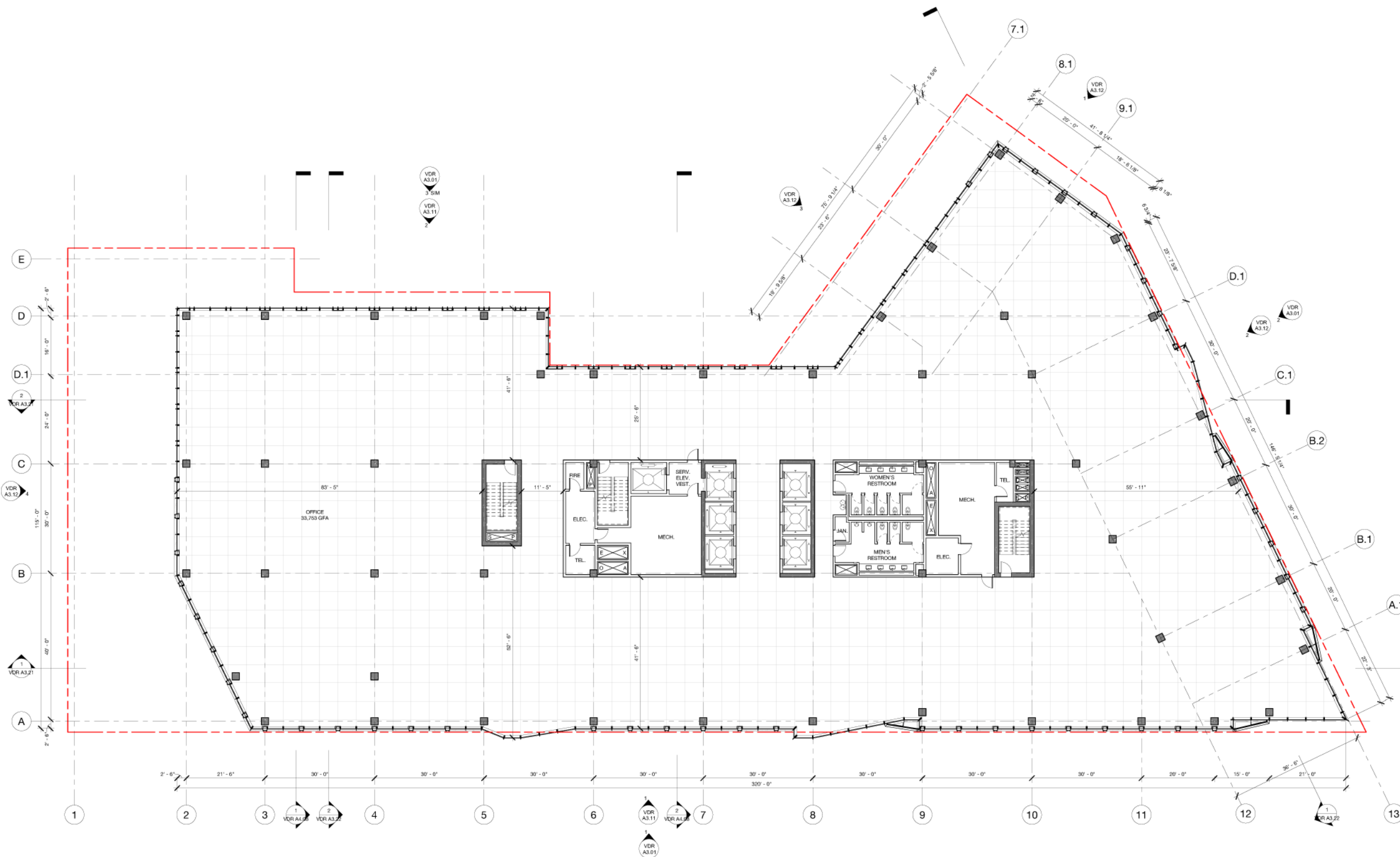
LEVEL 5 PLAN

PROJECT: 2530  
DATE: June 2008  
SCALE: 3/32" = 1'-0"

SHEET NUMBER:

**VDR A2.05**

Copyright 2008 by Pickard Chilton Architects, Inc. All rights reserved.



\* INTERIOR FLOOR PLANS ARE CONCEPTUAL AND SUBJECT TO CHANGE

2100 M STREET N.W.  
2100 M St. N.W.  
Washington, D.C. 20037

Owner  
**BXP**  
2200 Pennsylvania Ave NW  
Washington, DC 20037  
tel. 202.545.0800  
www.bxp.com

Design Consultant  
**Pickard Chilton**  
585 Chapel Street  
New Haven, Connecticut 06510  
tel. 203.766-8600  
www.pickardchilton.com

Architect of Record  
**Kendall/Heaton Associates**  
3050 Post Oak Boulevard, Suite 1000  
Houston, Texas 77002  
tel. 713.877.1192  
www.kendall-heaton.com

Landscape Architect  
**ParkerRodriguez**  
211 N Union Street, Suite 320  
Alexandria, Virginia 22314  
tel. 703.548.5010  
www.parkerrodriguez.com

Structural Engineer  
**Thornton Tomasetti**  
1330 Connecticut Avenue NW, Suite 300  
Washington, D.C. 20036  
tel. 202.560.6300  
www.thorntontomasetti.com

Mechanical and Electrical Engineer  
**GHT**  
1110 North Glebe Road, Suite 300  
Arlington, Virginia 22201  
tel. 703.243.1200  
www.ghtllc.com

Civil Engineer  
**Wiles Mensch**  
100 M Street, SE, #320  
Washington, D.C. 20003  
tel. 202.638-4040  
www.wm-dc.com

Transportation Consultant  
**Wells + Associates**  
650 Massachusetts Avenue NW, Suite 600  
Washington, D.C. 20001  
tel. 202.978.5222  
www.wellsandassociates.com

Vertical Transportation  
**VDA**  
120 Eagle Rock Avenue, Suite 310  
East Hanover, New Jersey 07936  
tel. 973.994.9220  
www.vdassoc.com

REVISIONS

Design Development

This drawing is not for construction or bidding purposes. Pickard Chilton Architects, Inc. has prepared this drawing solely to communicate architectural design intent. Pickard Chilton Architects, Inc. is not the Architect of Record and therefore is not responsible for preparing construction documents or for technical, legal, or construction-related matters. Pickard Chilton Architects, Inc. is not responsible for nor does it make any representation concerning dimensional accuracy of this drawing or coordination of this drawing with documents prepared by other disciplines.

NOT FOR CONSTRUCTION

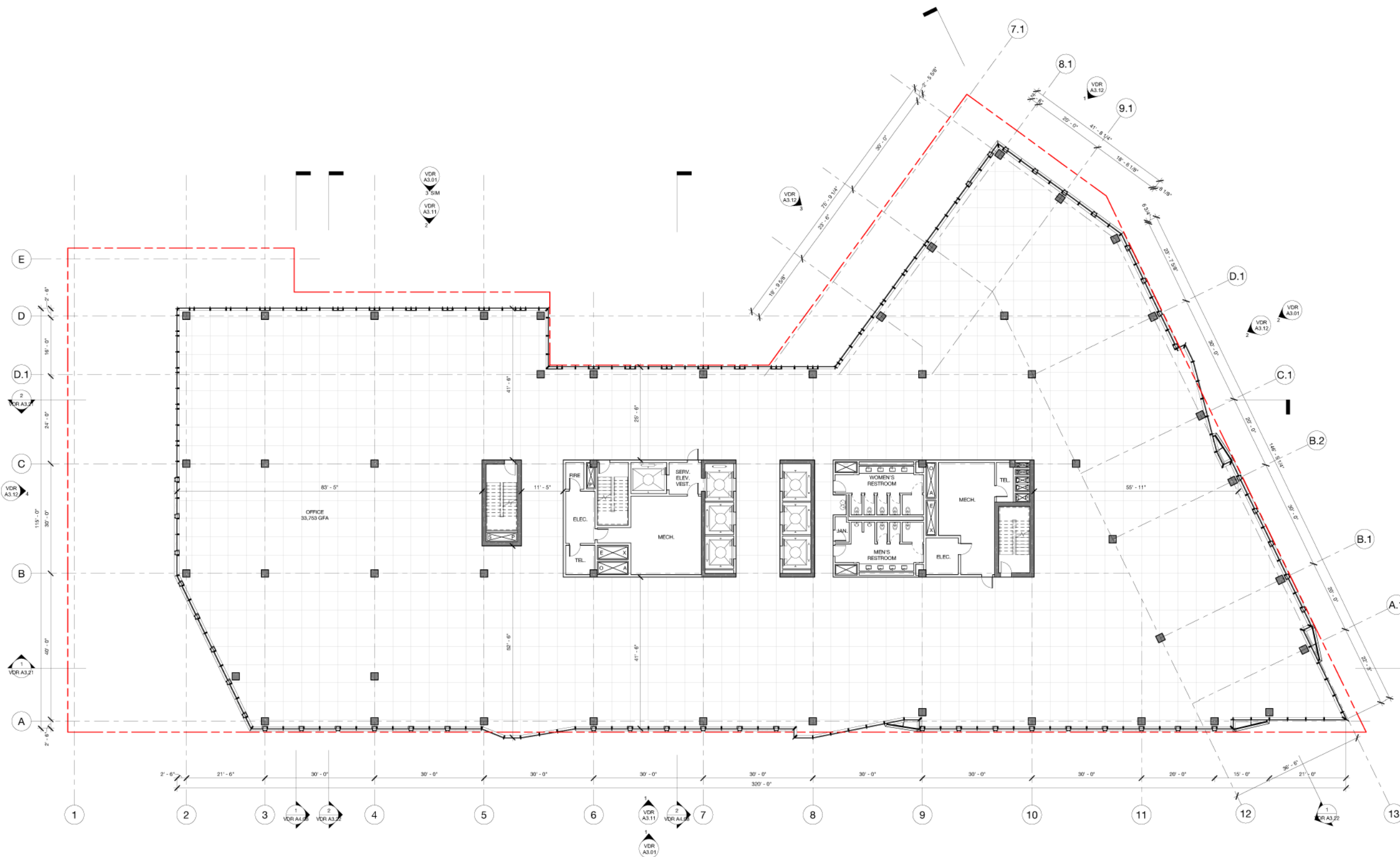
LEVEL 6 PLAN

PROJECT: 2530  
DATE: June 2006  
SCALE: 3/32" = 1'-0"

SHEET NUMBER:

**VDR A2.06**

Copyright 2006 by Pickard Chilton Architects, Inc. All rights reserved.



\* INTERIOR FLOOR PLANS ARE CONCEPTUAL AND SUBJECT TO CHANGE

2100 M STREET N.W.  
2100 M St. N.W.  
Washington, D.C. 20037

Owner  
**BXP**  
2200 Pennsylvania Ave NW  
Washington, DC 20037  
tel. 202.545.0800  
www.bxp.com

Design Consultant  
**Pickard Chilton**  
585 Chapel Street  
New Haven, Connecticut 06510  
tel. 203.766-8600  
www.pickardchilton.com

Architect of Record  
**Kendall/Heaton Associates**  
3050 Post Oak Boulevard, Suite 1000  
Houston, Texas 77002  
tel. 713.877.1192  
www.kendall-heaton.com

Landscape Architect  
**ParkerRodriguez**  
211 N Union Street, Suite 320  
Alexandria, Virginia 22314  
tel. 703.548.5010  
www.parkerrodriguez.com

Structural Engineer  
**Thornton Tomasetti**  
1330 Connecticut Avenue NW, Suite 300  
Washington, D.C. 20036  
tel. 202.560.6300  
www.thorntontomasetti.com

Mechanical and Electrical Engineer  
**GHT**  
1110 North Glebe Road, Suite 300  
Arlington, Virginia 22201  
tel. 703.243.1200  
www.ghtllc.com

Civil Engineer  
**Wiles Mensch**  
100 M Street, SE, #320  
Washington, D.C. 20003  
tel. 202.638-4040  
www.wm-dc.com

Transportation Consultant  
**Wells + Associates**  
650 Massachusetts Avenue NW, Suite 600  
Washington, D.C. 20001  
tel. 202.978.5222  
www.wellsandassociates.com

Vertical Transportation  
**VDA**  
120 Eagle Rock Avenue, Suite 310  
East Hanover, New Jersey 07936  
tel. 973.594.9220  
www.vdassoc.com

REVISIONS

1	
2	

Design Development

This drawing is not for construction or bidding purposes. Pickard Chilton Architects, Inc. has prepared this drawing solely to communicate architectural design intent. Pickard Chilton Architects, Inc. is not the Architect of Record and therefore is not responsible for preparing construction documents or for technical, legal, or construction-related matters. Pickard Chilton Architects, Inc. is not responsible for nor does it make any representation concerning dimensional accuracy of this drawing or coordination of this drawing with documents prepared by other disciplines.

NOT FOR CONSTRUCTION

LEVEL 7 PLAN

PROJECT: 2530  
DATE: June 2006  
SCALE: 3/32" = 1'-0"

SHEET NUMBER:

**VDR A2.07**

Copyright 2006 by Pickard Chilton Architects, Inc. All rights reserved.



\* INTERIOR FLOOR PLANS ARE CONCEPTUAL AND SUBJECT TO CHANGE

2100 M STREET N.W.  
2100 M St. N.W.  
Washington, D.C. 20037

Owner  
**BXP**  
2200 Pennsylvania Ave NW  
Washington, DC 20037  
tel. 202.545.0800  
www.bxp.com

Design Consultant  
**Pickard Chilton**  
585 Chapel Street  
New Haven, Connecticut 06510  
tel. 203.766-8600  
www.pickarchilton.com

Architect of Record  
**Kendall/Heaton Associates**  
3050 Post Oak Boulevard, Suite 1000  
Houston, Texas 77002  
tel. 713.877.1192  
www.kendall-heaton.com

Landscape Architect  
**ParkerRodriguez**  
211 N Union Street, Suite 320  
Alexandria, Virginia 22314  
tel. 703.548.5010  
www.parkerrodriguez.com

Structural Engineer  
**Thornton Tomasetti**  
1330 Connecticut Avenue NW, Suite 300  
Washington, D.C. 20036  
tel. 202.560.6300  
www.thorntontomasetti.com

Mechanical and Electrical Engineer  
**GHT**  
1110 North Glebe Road, Suite 300  
Arlington, Virginia 22201  
tel. 703.243.1200  
www.ghtllc.com

Civil Engineer  
**Wiles Mensch**  
100 M Street, SE, #320  
Washington, D.C. 20003  
tel. 202.638-4040  
www.wm-dc.com

Transportation Consultant  
**Wells + Associates**  
650 Massachusetts Avenue NW, Suite 600  
Washington, D.C. 20001  
tel. 202.978.5222  
www.wellsandassociates.com

Vertical Transportation  
**VDA**  
120 Eagle Rock Avenue, Suite 310  
East Hanover, New Jersey 07936  
tel. 973.994.9220  
www.vdassoc.com

REVISIONS

1

Design Development

This drawing is not for construction or bidding purposes. Pickard Chilton Architects, Inc. has prepared this drawing solely to communicate architectural design intent. Pickard Chilton Architects, Inc. is not the Architect of Record and therefore is not responsible for preparing construction documents or for technical, legal, or construction-related matters. Pickard Chilton Architects, Inc. is not responsible for nor does it make any representation concerning dimensional accuracy of this drawing or coordination of this drawing with documents prepared by other disciplines.

NOT FOR CONSTRUCTION

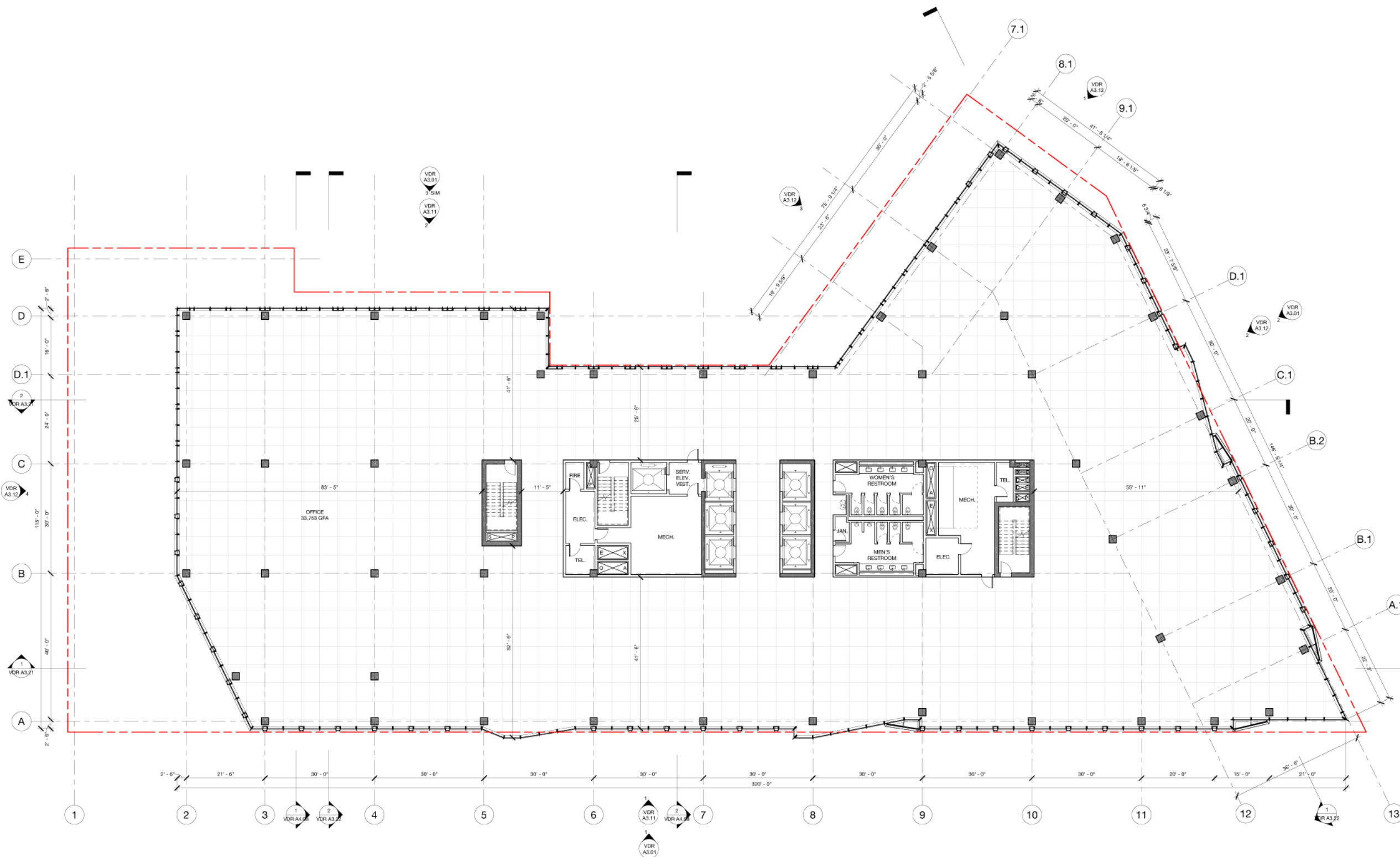
LEVEL 8 PLAN

PROJECT: 2530  
DATE: June 2008  
SCALE: 3/32" = 1'-0"

SHEET NUMBER:

**VDR A2.08**

Copyright 2008 by Pickard Chilton Architects, Inc. All rights reserved.



\* INTERIOR FLOOR PLANS ARE CONCEPTUAL AND SUBJECT TO CHANGE

2100 M STREET N.W.  
2100 M St. N.W.  
Washington, D.C. 20037

Owner  
**BXP**  
2200 Pennsylvania Ave NW  
Washington, DC 20037  
tel. 202.545.0800  
www.bxp.com

Design Consultant  
**Pickard Chilton**  
585 Chapel Street  
New Haven, Connecticut 06510  
tel. 203.766.8600  
www.pickarchilton.com

Architect of Record  
**Kendall/Heaton Associates**  
2050 Post Oak Boulevard, Suite 1000  
Houston, Texas 77002  
tel. 713.877.1192  
www.kendall-heaton.com

Landscape Architect  
**ParkerRodriguez**  
211 N Union Street, Suite 320  
Alexandria, Virginia 22314  
tel. 703.548.5010  
www.parkerrodriguez.com

Structural Engineer  
**Thornton Tomasetti**  
1330 Connecticut Avenue NW, Suite 300  
Washington, D.C. 20036  
tel. 202.560.6300  
www.thorntontomasetti.com

Mechanical and Electrical Engineer  
**GHT**  
1110 North Glebe Road, Suite 300  
Arlington, Virginia 22201  
tel. 703.243.1200  
www.ghtllc.com

Civil Engineer  
**Wiles Mensch**  
100 M Street, SE, #320  
Washington, D.C. 20003  
tel. 202.638.4040  
www.wm-dc.com

Transportation Consultant  
**Wells + Associates**  
650 Massachusetts Avenue NW, Suite 600  
Washington, D.C. 20001  
tel. 202.978.5222  
www.wellsandassociates.com

Vertical Transportation  
**VDA**  
120 Eagle Rock Avenue, Suite 310  
East Hanover, New Jersey 07936  
tel. 973.594.9220  
www.vdassoc.com

REVISIONS

Design Development

This drawing is not for construction or bidding purposes. Pickard Chilton Architects, Inc. has prepared this drawing solely to communicate architectural design intent. Pickard Chilton Architects, Inc. is not the Architect of Record and therefore is not responsible for preparing construction documents or for technical, legal, or construction-related matters. Pickard Chilton Architects, Inc. is not responsible for nor does it make any representation concerning dimensional accuracy of this drawing or coordination of this drawing with documents prepared by other disciplines.

NOT FOR CONSTRUCTION

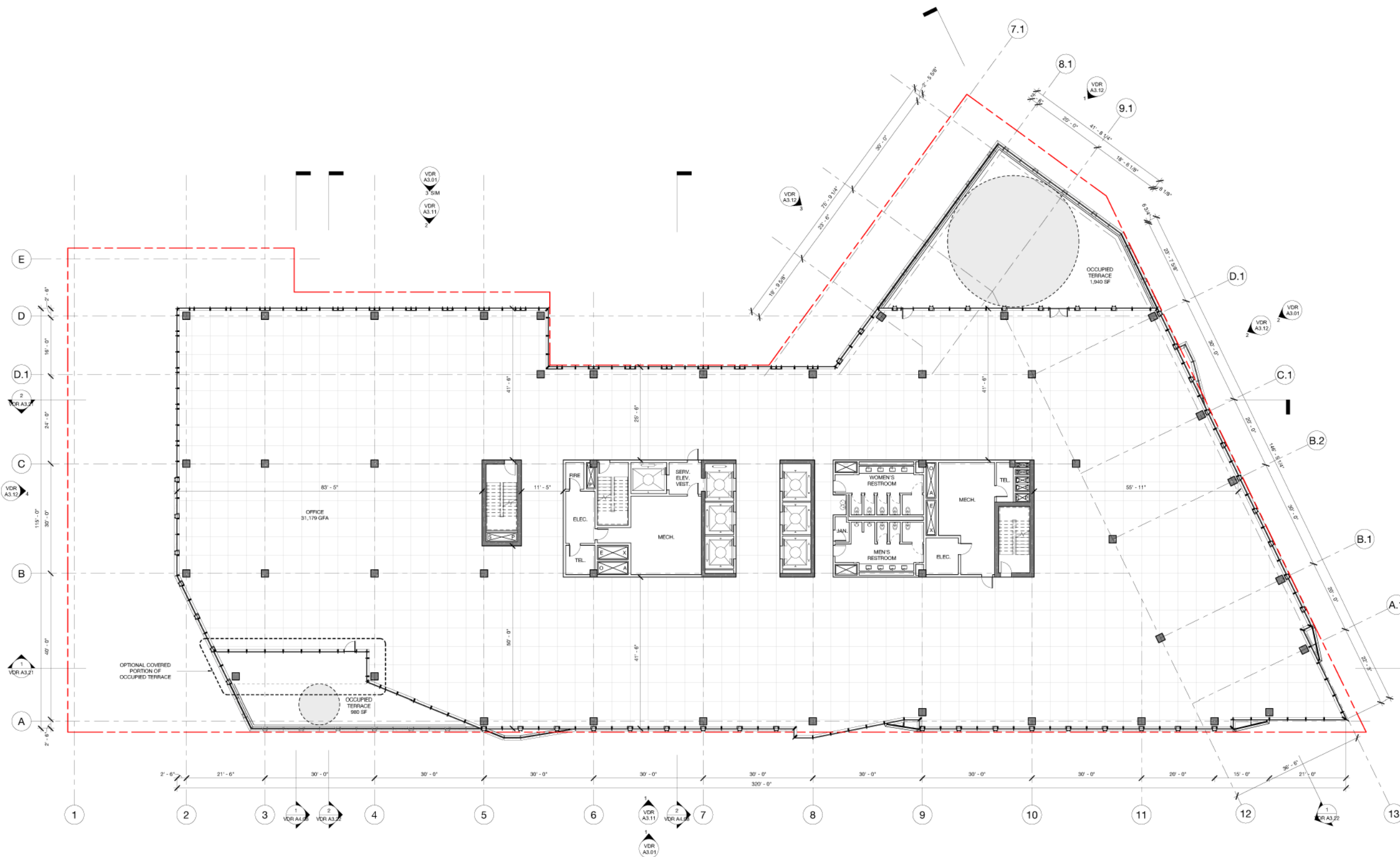
LEVEL 9 PLAN

PROJECT: 2530  
DATE: June 2008  
SCALE: 3/32" = 1'-0"

SHEET NUMBER:

**VDR A2.09**

Copyright 2008 by Pickard Chilton Architects, Inc. All rights reserved.





2100 M STREET N.W.  
2100 M St. N.W.  
Washington, D.C. 20037

Owner  
**BXP**  
2200 Pennsylvania Ave NW  
Washington, DC 20037  
tel. 202.545.0800  
www.bxp.com

Design Consultant  
**Pickard Chilton**  
585 Chapel Street  
New Haven, Connecticut 06510  
tel. 203.766.8600  
www.pickardchilton.com

Architect of Record  
**Kendall/Heaton Associates**  
3050 Post Oak Boulevard, Suite 1000  
Houston, Texas 77002  
tel. 713.877.1192  
www.kendall-heaton.com

Landscape Architect  
**ParkerRodriguez**  
211 N Union Street, Suite 320  
Alexandria, Virginia 22314  
tel. 703.548.5010  
www.parkerrodriguez.com

Structural Engineer  
**Thornton Tomasetti**  
1330 Connecticut Avenue NW, Suite 300  
Washington, D.C. 20036  
tel. 202.560.6300  
www.thorntontomasetti.com

Mechanical and Electrical Engineer  
**GHT**  
1110 North Glebe Road, Suite 300  
Arlington, Virginia 22201  
tel. 703.243.1200  
www.ghtllc.com

Civil Engineer  
**Wiles Mensch**  
100 M Street, SE, #320  
Washington, D.C. 20003  
tel. 202.638.4040  
www.wm-dc.com

Transportation Consultant  
**Wells + Associates**  
650 Massachusetts Avenue NW, Suite 600  
Washington, D.C. 20001  
tel. 202.978.5222  
www.wellsandassociates.com

Vertical Transportation  
**VDA**  
120 Eagle Rock Avenue, Suite 310  
East Hanover, New Jersey 07936  
tel. 973.994.9220  
www.vdassoc.com

REVISIONS

Design Development

This drawing is not for construction or bidding purposes. Pickard Chilton Architects, Inc. has prepared this drawing solely to communicate architectural design intent. Pickard Chilton Architects, Inc. is not the Architect of Record and therefore is not responsible for preparing construction documents or for technical, legal, or construction-related matters. Pickard Chilton Architects, Inc. is not responsible for nor does it make any representation concerning dimensional accuracy of this drawing or coordination of this drawing with documents prepared by other disciplines.

NOT FOR CONSTRUCTION

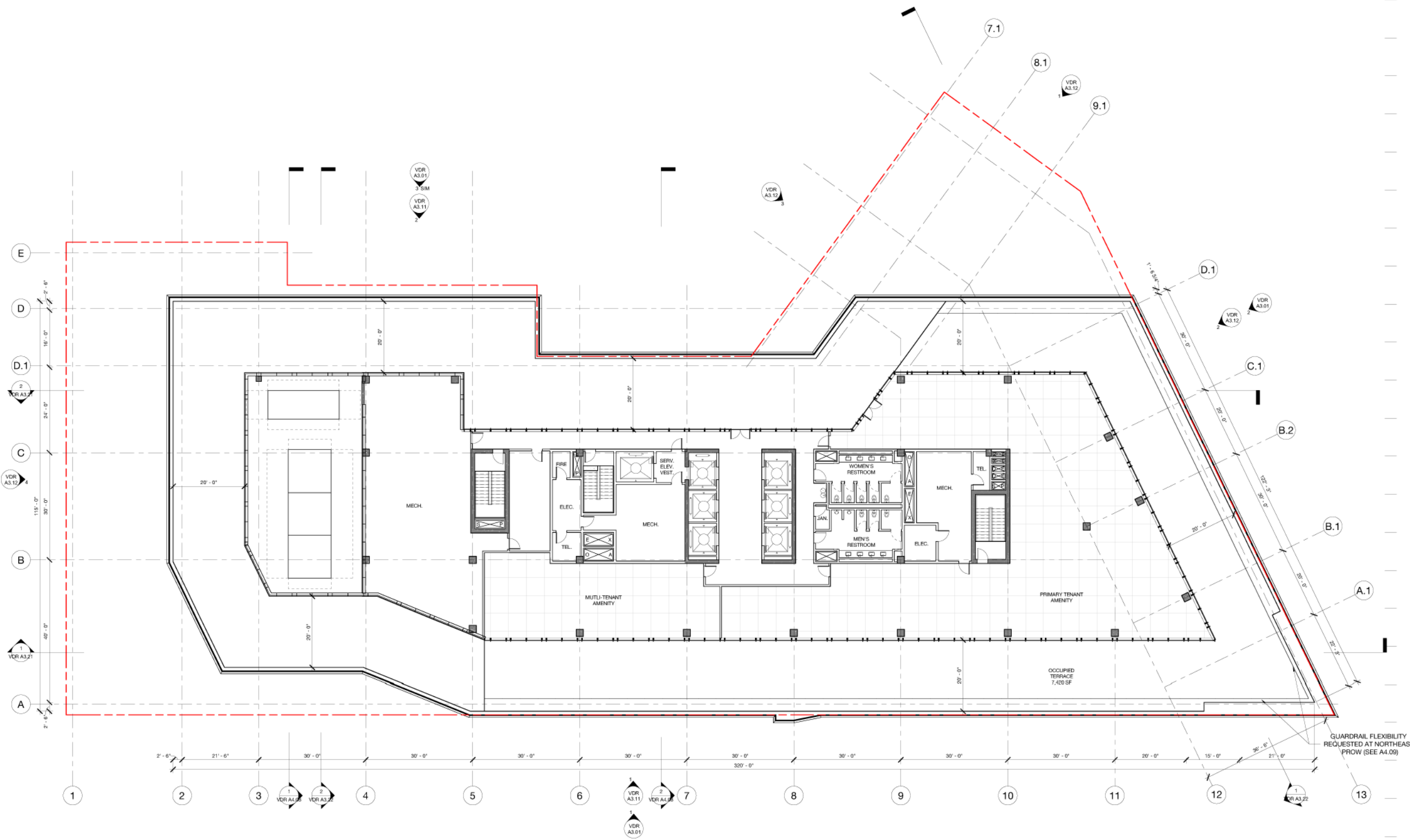
LEVEL 11 PLAN (PENTHOUSE)

PROJECT: 2530  
DATE: June 2008  
SCALE: 3/32" = 1'-0"

SHEET NUMBER:

**VDR A2.11**

Copyright 2008 by Pickard Chilton Architects, Inc. All rights reserved.



2100 M STREET N.W.  
2100 M St. N.W.  
Washington, D.C. 20037

Owner  
**BXP**  
2200 Pennsylvania Ave NW  
Washington, DC 20037  
tel. 202.545.0800  
www.bxp.com

Design Consultant  
**Pickard Chilton**  
585 Chapel Street  
New Haven, Connecticut 06510  
tel. 203.766.8600  
www.pickardchilton.com

Architect of Record  
**Kendall/Heaton Associates**  
3050 Post Oak Boulevard, Suite 1000  
Houston, Texas 77002  
tel. 713.877.1192  
www.kendall-heaton.com

Landscape Architect  
**ParkerRodriguez**  
211 N Union Street, Suite 320  
Alexandria, Virginia 22314  
tel. 703.548.5010  
www.parkerrodriguez.com

Structural Engineer  
**Thornton Tomasetti**  
1330 Connecticut Avenue NW, Suite 300  
Washington, D.C. 20036  
tel. 202.560.6300  
www.thorntontomasetti.com

Mechanical and Electrical Engineer  
**GHT**  
1110 North Glebe Road, Suite 300  
Arlington, Virginia 22201  
tel. 703.243.1200  
www.ghtllc.com

Civil Engineer  
**Wiles Mensch**  
100 M Street, SE, #320  
Washington, D.C. 20003  
tel. 202.638-4040  
www.wm-dc.com

Transportation Consultant  
**Wells + Associates**  
650 Massachusetts Avenue NW, Suite 600  
Washington, D.C. 20001  
tel. 202.978.5222  
www.wellsandassociates.com

Vertical Transportation  
**VDA**  
120 Eagle Rock Avenue, Suite 310  
East Hanover, New Jersey 07936  
tel. 973.994.9220  
www.vdassoc.com

REVISIONS

Design Development

This drawing is not for construction or bidding purposes. Pickard Chilton Architects, Inc. has prepared this drawing solely to communicate architectural design intent. Pickard Chilton Architects, Inc. is not the Architect of Record and therefore is not responsible for preparing construction documents or for technical, legal, or construction-related matters. Pickard Chilton Architects, Inc. is not responsible for nor does it make any representation concerning dimensional accuracy of this drawing or coordination of this drawing with documents prepared by other disciplines.

NOT FOR CONSTRUCTION

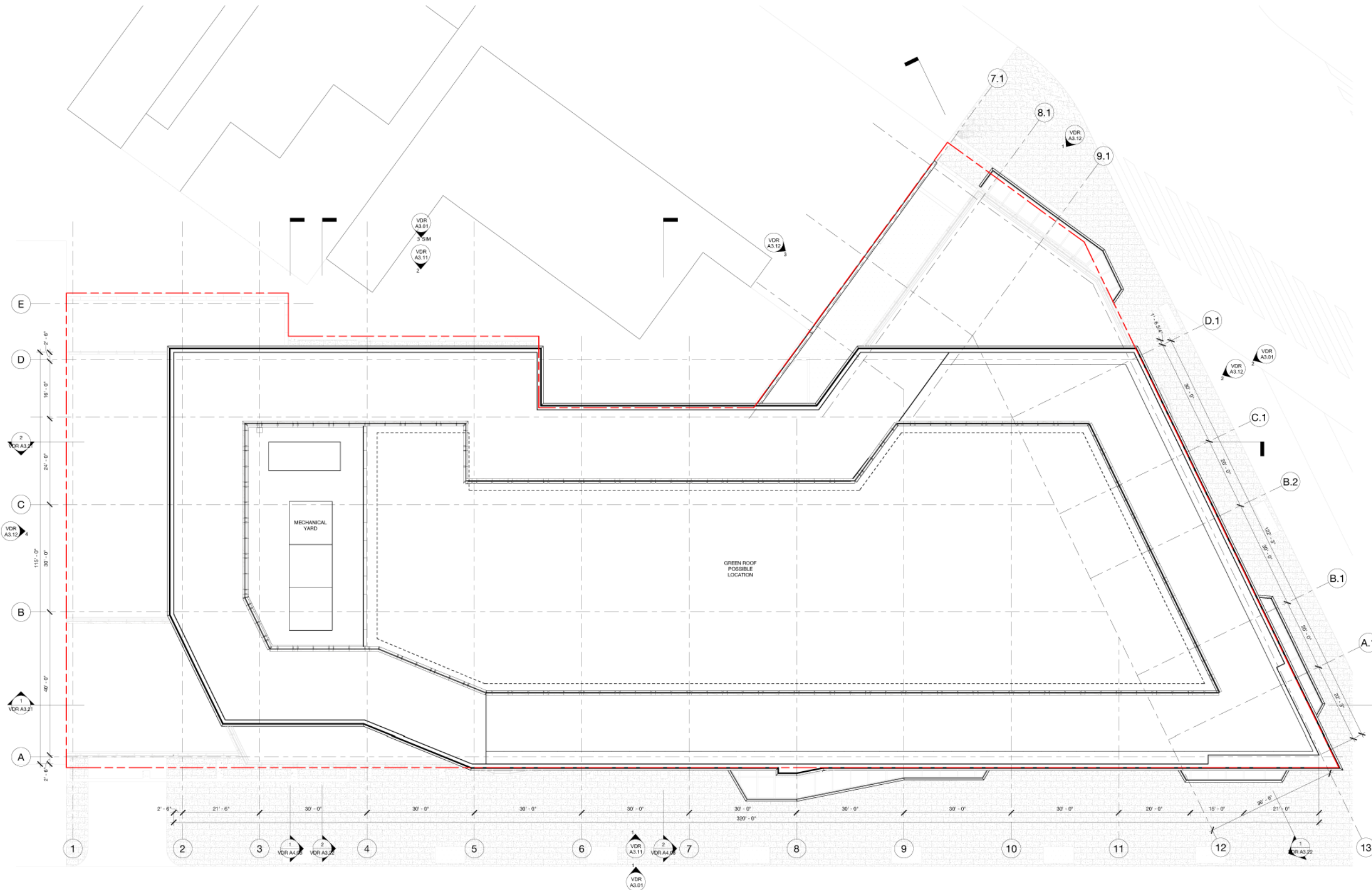
ROOF PLAN

PROJECT: 2530  
DATE: June 2008  
SCALE: 3/32" = 1'-0"

SHEET NUMBER:

**VDR A2.12**

Copyright 2008 by Pickard Chilton Architects, Inc. All rights reserved.



2100 M STREET N.W.  
2100 M St. N.W.  
Washington, D.C. 20037

Owner  
**BXP**  
2200 Pennsylvania Ave NW  
Washington, DC 20037  
tel. 202.545.0800  
www.bxp.com

Design Consultant  
**Pickard Chilton**  
585 Chapel Street  
New Haven, Connecticut 06510  
tel. 203.766.8600  
www.pickarchilton.com

Architect of Record  
**Kendall/Heaton Associates**  
3050 Post Oak Boulevard, Suite 1000  
Houston, Texas 77002  
tel. 713.877.1192  
www.kendall-heaton.com

Landscape Architect  
**ParkerRodriguez**  
211 N Union Street, Suite 320  
Alexandria, Virginia 22314  
tel. 703.548.5010  
www.parkerrodriguez.com

Structural Engineer  
**Thornton Tomasetti**  
1330 Connecticut Avenue NW, Suite 300  
Washington, D.C. 20036  
tel. 202.560.6300  
www.thorntontomasetti.com

Mechanical and Electrical Engineer  
**GHT**  
1110 North Glebe Road, Suite 300  
Arlington, Virginia 22201  
tel. 703.243.1200  
www.ghtllc.com

Civil Engineer  
**Wiles Mensch**  
100 M Street SE, #320  
Washington, D.C. 20003  
tel. 202.638-4040  
www.wm-dc.com

Transportation Consultant  
**Wells + Associates**  
650 Massachusetts Avenue NW, Suite 600  
Washington, D.C. 20001  
tel. 202.978.5222  
www.wellsandassociates.com

Vertical Transportation  
**VDA**  
120 Eagle Rock Avenue, Suite 310  
East Hanover, New Jersey 07936  
tel. 973.994.9220  
www.vdassoc.com

REVISIONS

Design Development

This drawing is not for construction or bidding purposes. Pickard Chilton Architects, Inc. has prepared this drawing solely to communicate architectural design intent. Pickard Chilton Architects, Inc. is not the Architect of Record and therefore is not responsible for preparing construction documents or for technical, legal, or construction-related matters. Pickard Chilton Architects, Inc. is not responsible for nor does it make any representation concerning dimensional accuracy of this drawing or coordination of this drawing with documents prepared by other disciplines.

NOT FOR CONSTRUCTION

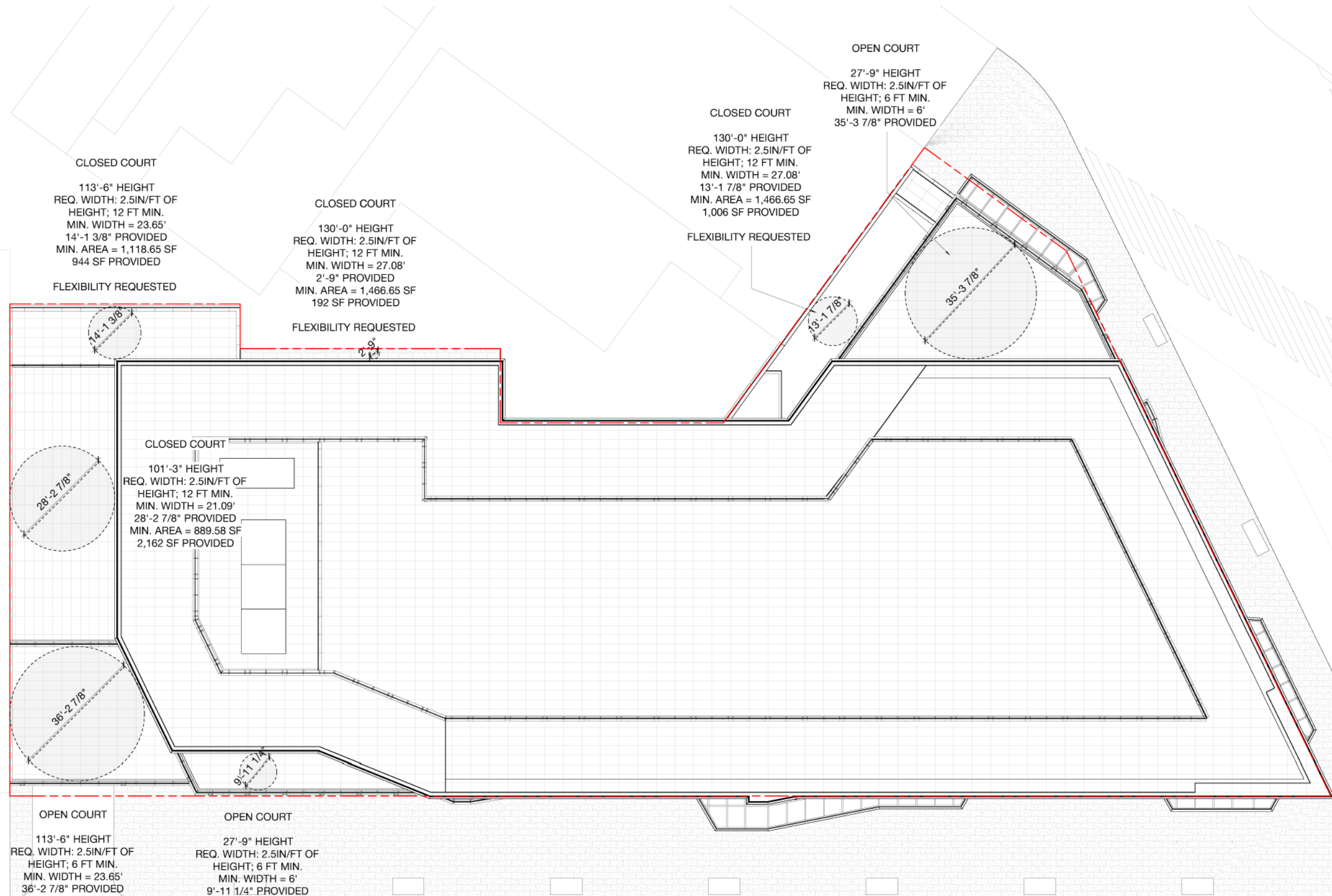
ROOF PLAN - COURTS

PROJECT: 2530  
DATE: June 2008  
SCALE: 3/32" = 1'-0"

SHEET NUMBER:

**VDR A2.13**

Copyright 2008 by Pickard Chilton Architects, Inc. All rights reserved.



1 VDR - ROOF PLAN - COURTS  
3/32" = 1'-0"

2100 M STREET N.W.  
2100 M St. N.W.  
Washington, D.C. 20037

Owner  
**BXP**  
2200 Pennsylvania Ave NW  
Washington, DC 20037  
tel. 202.545.0800  
www.bxp.com

Design Consultant  
**Pickard Chilton**  
565 Chapel Street  
New Haven, Connecticut 06510  
tel. 203.786.8600  
www.pickarchilton.com

Architect of Record  
**Kendall/Heaton Associates**  
3050 Post Oak Boulevard, Suite 1000  
Houston, Texas 77002  
tel. 713.877.1192  
www.kendall-heaton.com

Landscape Architect  
**ParkerRodriguez**  
211 N Union Street, Suite 320  
Alexandria, Virginia 22314  
tel. 703.548.5010  
www.parkerrodriguez.com

Structural Engineer  
**Thornton Tomasetti**  
1330 Connecticut Avenue NW, Suite 300  
Washington, D.C. 20036  
tel. 202.560.6300  
www.thorntontomasetti.com

Mechanical and Electrical Engineer  
**GHT**  
1110 North Glebe Road, Suite 300  
Arlington, Virginia 22201  
tel. 703.243.1200  
www.ghtinc.com

Civil Engineer  
**Wiles Mensch**  
100 M Street, SE, #320  
Washington, D.C. 20003  
tel. 202.638.4040  
www.wm-dc.com

Transportation Consultant  
**Wells + Associates**  
650 Massachusetts Avenue NW, Suite 600  
Washington, D.C. 20001  
tel. 202.978.5222  
www.wellsandassociates.com

Vertical Transportation  
**VDA**  
120 Eagle Rock Avenue, Suite 310  
East Hanover, New Jersey 07936  
tel. 973.994.9220  
www.vdassoc.com

REVISIONS

Design Development

This drawing is not for construction or bidding purposes. Pickard Chilton Architects, Inc. has prepared this drawing solely to communicate architectural design intent. Pickard Chilton Architects, Inc. is not the Architect of Record and therefore is not responsible for preparing construction documents or for technical, legal, or construction-related matters. Pickard Chilton Architects, Inc. is not responsible for nor does it make any representation concerning dimensional accuracy of this drawing or coordination of this drawing with documents prepared by other disciplines.

NOT FOR CONSTRUCTION

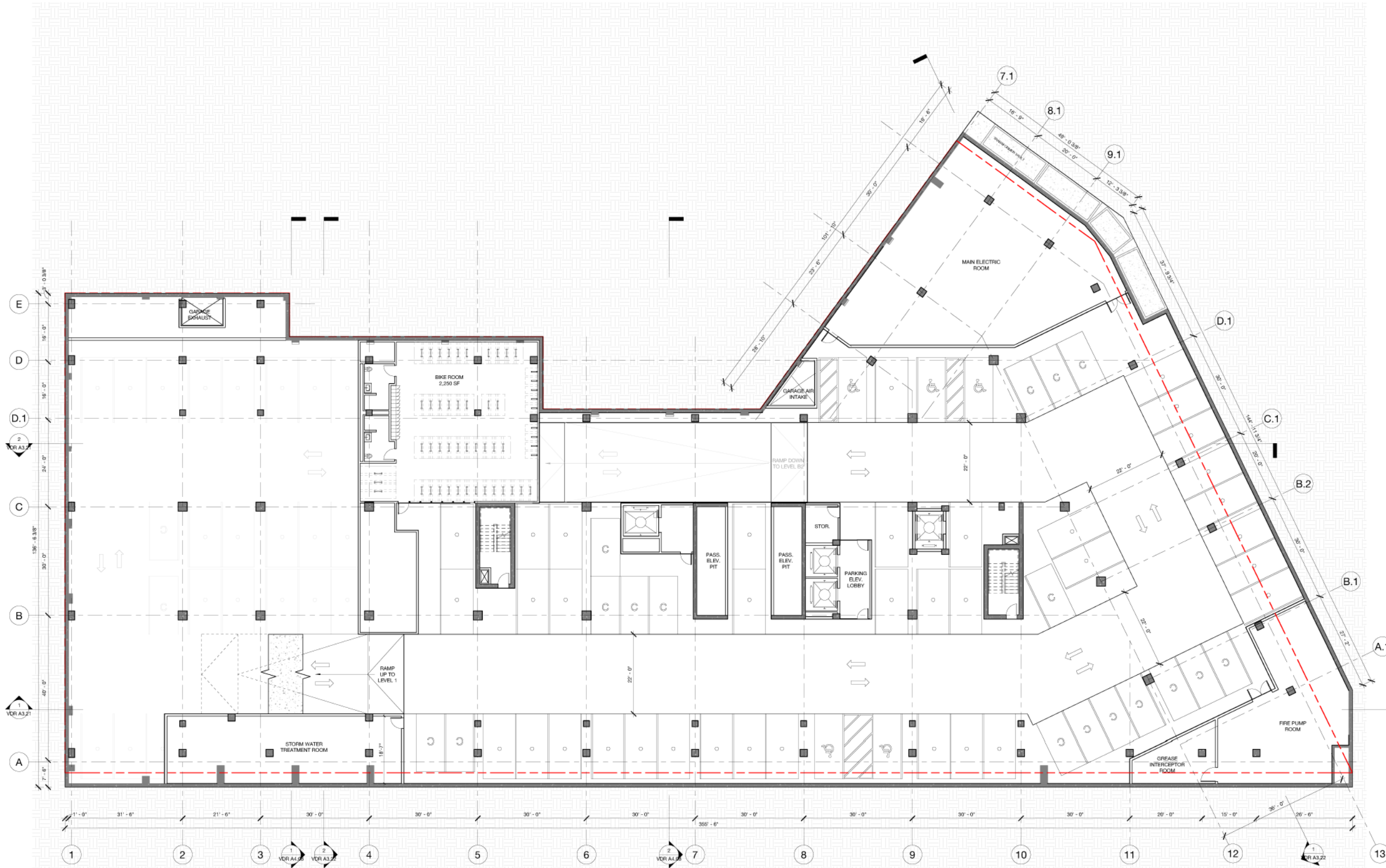
LEVEL B1 PLAN

PROJECT: 2530  
DATE: June 2008  
SCALE: 3/32" = 1'-0"

SHEET NUMBER:

**VDR A2.B1**

Copyright 2008 by Pickard Chilton Architects, Inc. All rights reserved.



\* INTERIOR FLOOR PLANS, INCLUDING NUMBER, LAYOUT, AND PERCENTAGE OF STANDARD, COMPACT, AND TANDEM SPACES ARE CONCEPTUAL AND SUBJECT TO CHANGE.

1 VDR - LEVEL B1 PLAN  
3/32" = 1'-0"

LEVEL B1		PARKING SPACES	
Typical	10	Tandem	28
Compact	15	Accessible (Van)	2
Accessible (Van)	2	Accessible	3
Accessible	3		58

2100 M STREET N.W.  
2100 M St. N.W.  
Washington, D.C. 20037

Owner  
**BXP**  
2200 Pennsylvania Ave NW  
Washington, DC 20037  
tel. 202.545.0800  
www.bxp.com

Design Consultant  
**Pickard Chilton**  
565 Chapel Street  
New Haven, Connecticut 06510  
tel. 203.766.8600  
www.pickarchilton.com

Architect of Record  
**Kendall/Heaton Associates**  
3050 Post Oak Boulevard, Suite 1000  
Houston, Texas 77002  
tel. 713.877.1192  
www.kendall-heaton.com

Landscape Architect  
**ParkerRodriguez**  
211 N Union Street, Suite 320  
Alexandria, Virginia 22314  
tel. 703.548.5010  
www.parkerrodriguez.com

Structural Engineer  
**Thornton Tomasetti**  
1330 Connecticut Avenue NW, Suite 300  
Washington, D.C. 20036  
tel. 202.590.6300  
www.thorntontomasetti.com

Mechanical and Electrical Engineer  
**GHT**  
1110 North Glebe Road, Suite 300  
Arlington, Virginia 22201  
tel. 703.243.1200  
www.ghtinc.com

Civil Engineer  
**Wiles Mensch**  
100 M Street, SE, #220  
Washington, D.C. 20003  
tel. 202.638.4040  
www.wm-dc.com

Transportation Consultant  
**Wells + Associates**  
650 Massachusetts Avenue NW, Suite 600  
Washington, D.C. 20001  
tel. 202.978.5222  
www.wellsandassociates.com

Vertical Transportation  
**VDA**  
120 Eagle Rock Avenue, Suite 310  
East Hanover, New Jersey 07936  
tel. 973.594.9220  
www.vdassoc.com

REVISIONS

Design Development

This drawing is not for construction or bidding purposes. Pickard Chilton Architects, Inc. has prepared this drawing solely to communicate architectural design intent. Pickard Chilton Architects, Inc. is not the Architect of Record and therefore is not responsible for preparing construction documents or for technical, legal, or construction-related matters. Pickard Chilton Architects, Inc. is not responsible for nor does it make any representation concerning dimensional accuracy of this drawing or coordination of this drawing with documents prepared by other disciplines.

NOT FOR CONSTRUCTION

LEVEL B2 PLAN

PROJECT: 2530  
DATE: June 2008  
SCALE: 3/32" = 1'-0"

SHEET NUMBER:

**VDR A2.B2**

Copyright 2008 by Pickard Chilton Architects, Inc. All rights reserved.



\* INTERIOR FLOOR PLANS, INCLUDING NUMBER, LAYOUT, AND PERCENTAGE OF STANDARD, COMPACT, AND TANDEM SPACES ARE CONCEPTUAL AND SUBJECT TO CHANGE.

1 VDR - LEVEL B2 PLAN  
3/32" = 1'-0"

LEVEL B2		PARKING SPACES	
Typical			76
Tandem			6
Compact			14
			96

2100 M STREET N.W.  
2100 M St. N.W.  
Washington, D.C. 20037

Owner  
**BXP**  
2200 Pennsylvania Ave NW  
Washington, DC 20037  
tel. 202.545.0800  
www.bxp.com

Design Consultant  
**Pickard Chilton**  
565 Chapel Street  
New Haven, Connecticut 06510  
tel. 203.766.8600  
www.pickarchilton.com

Architect of Record  
**Kendall/Heaton Associates**  
3050 Post Oak Boulevard, Suite 1000  
Houston, Texas 77002  
tel. 713.877.1192  
www.kendall-heaton.com

Landscape Architect  
**ParkerRodriguez**  
211 N Union Street, Suite 320  
Alexandria, Virginia 22314  
tel. 703.548.5010  
www.parkerrodriguez.com

Structural Engineer  
**Thornton Tomasetti**  
1330 Connecticut Avenue NW, Suite 300  
Washington, D.C. 20036  
tel. 202.590.6300  
www.thorntontomasetti.com

Mechanical and Electrical Engineer  
**GHT**  
1110 North Glebe Road, Suite 300  
Arlington, Virginia 22201  
tel. 703.243.1200  
www.ght.com

Civil Engineer  
**Wiles Mensch**  
100 M Street, SE, #320  
Washington, D.C. 20003  
tel. 202.638-4040  
www.wm-dc.com

Transportation Consultant  
**Wells + Associates**  
650 Massachusetts Avenue NW, Suite 600  
Washington, D.C. 20001  
tel. 202.978.5222  
www.wellsandassociates.com

Vertical Transportation  
**VDA**  
120 Eagle Rock Avenue, Suite 310  
East Hanover, New Jersey 07936  
tel. 973.994.9220  
www.vdassoc.com

REVISIONS

Design Development

This drawing is not for construction or bidding purposes. Pickard Chilton Architects, Inc. has prepared this drawing solely to communicate architectural design intent. Pickard Chilton Architects, Inc. is not the Architect of Record and therefore is not responsible for preparing construction documents or for technical, legal, or construction-related matters. Pickard Chilton Architects, Inc. is not responsible for nor does it make any representation concerning dimensional accuracy of this drawing or coordination of this drawing with documents prepared by other disciplines.

NOT FOR CONSTRUCTION

LEVEL B3 PLAN

PROJECT: 2530

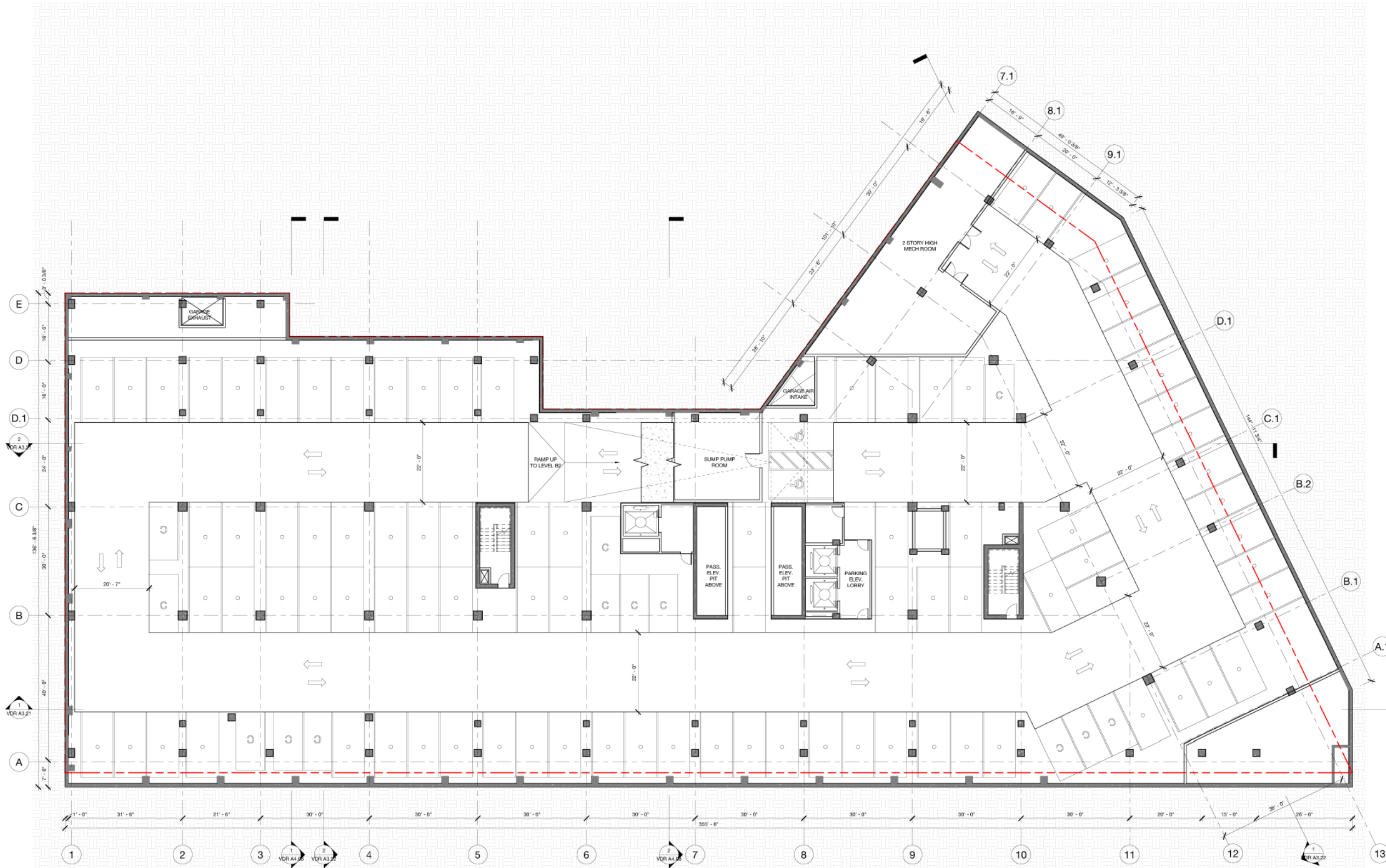
DATE: June 2008

SCALE: 3/32" = 1'-0"

SHEET NUMBER:

**VDR A2.B3**

Copyright 2008 by Pickard Chilton Architects, Inc. All rights reserved.



\* INTERIOR FLOOR PLANS, INCLUDING NUMBER, LAYOUT, AND PERCENTAGE OF STANDARD, COMPACT, AND TANDEM SPACES ARE CONCEPTUAL AND SUBJECT TO CHANGE.

1 VDR - LEVEL B3 PLAN  
3/32" = 1'-0"

LEVEL B3		PARKING SPACES	
Typical	80	Typical	80
Tandem	6	Tandem	6
Compact	13	Compact	13
Accessible	2	Accessible	2
			101