

# **THE HERITAGE NEW YORK AVENUE SHELTER**

1201 NEW YORK AVENUE NE, WASHINGTON, D.C., 20002

**TREE PLANTING ALONG NEW YORK AVENUE**

AUGUST 20, 2025

**Sorg**

ZONING COM  
District of Col  
CASE NO. 24-24  
EXHIBIT NO. 19D

## TREE PLANTING ALONG NEW YORK AVENUE

Our team has investigated the possibility of planting street trees along the curb line on New York Avenue NE as requested by DDOT and Urban Forestry. Based on our findings, it is possible to plant street trees along NY Avenue between the new proposed sidewalk and the property line, but not along the curb line as is customarily requested.

The following diagrams show several reasons for this determination. First, there is a 3' minimum horizontal clearance to be accounted for from the edge of a tree at breast height to the underground utilities running along New York Avenue, (Shown in Figures 1 and 2). Figure 1 shows the current utilities (Sewer, Electrical, Water, & Gas) and the sizes of each main running along NY Avenue at our site, and calls out the 3' horizontal clearance from each utility. With the 3' standard horizontal clearance, the 3' soil depth requirement per DC standard planting details (Figure 4), and the existing utility lines (Figure 3), the curb line for tree boxes would be unable to accommodate any tree plantings without relocating the utility mains running along NY Avenue at our site.

We believe there can be street trees along NY Avenue between the proposed sidewalk and property line, planted by Urban Forestry based on DDOT requirements, as shown in the proposed revised landscape plan.

UTILITY CLEARANCES - NEW YORK AVENUE

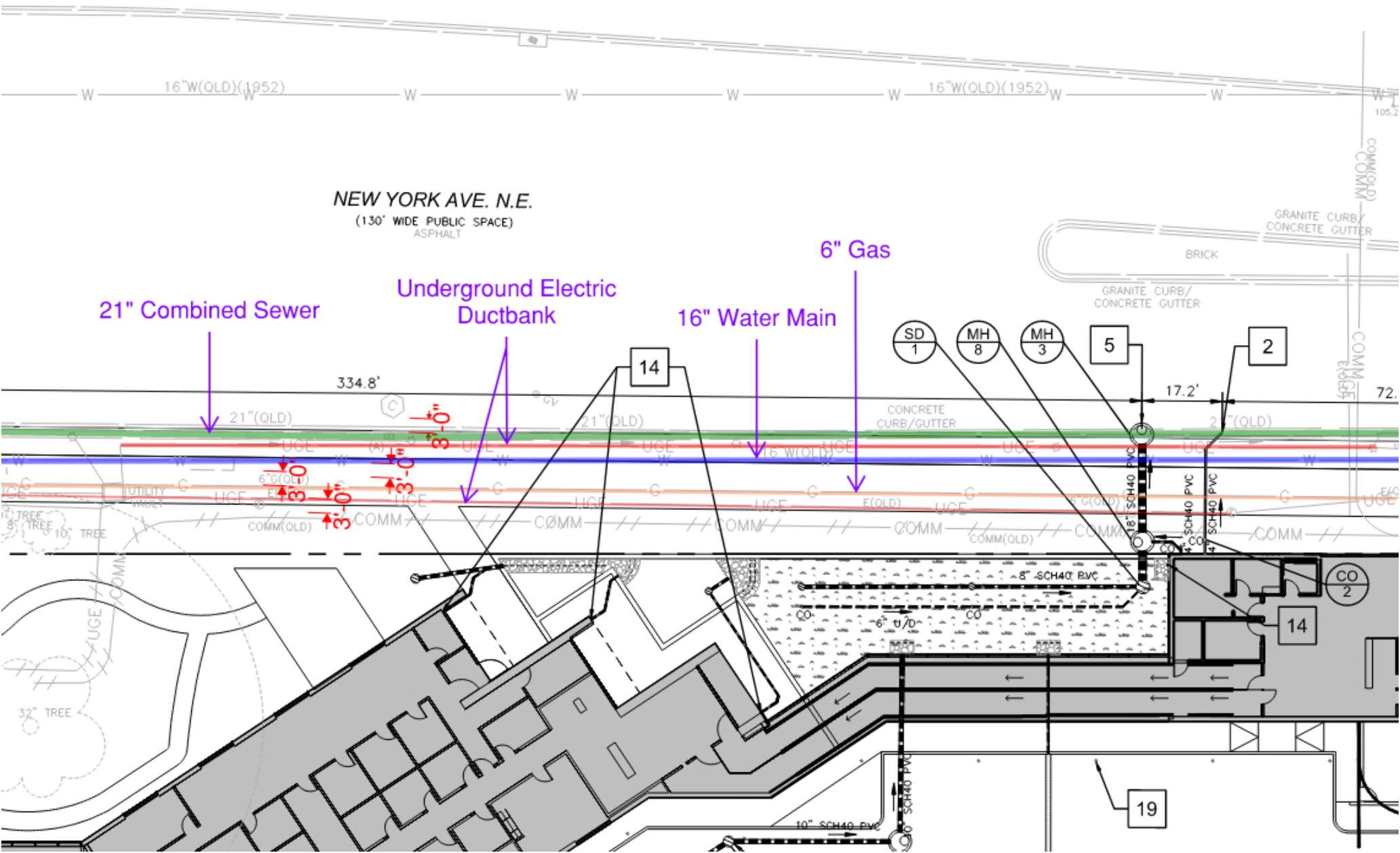


FIGURE 1

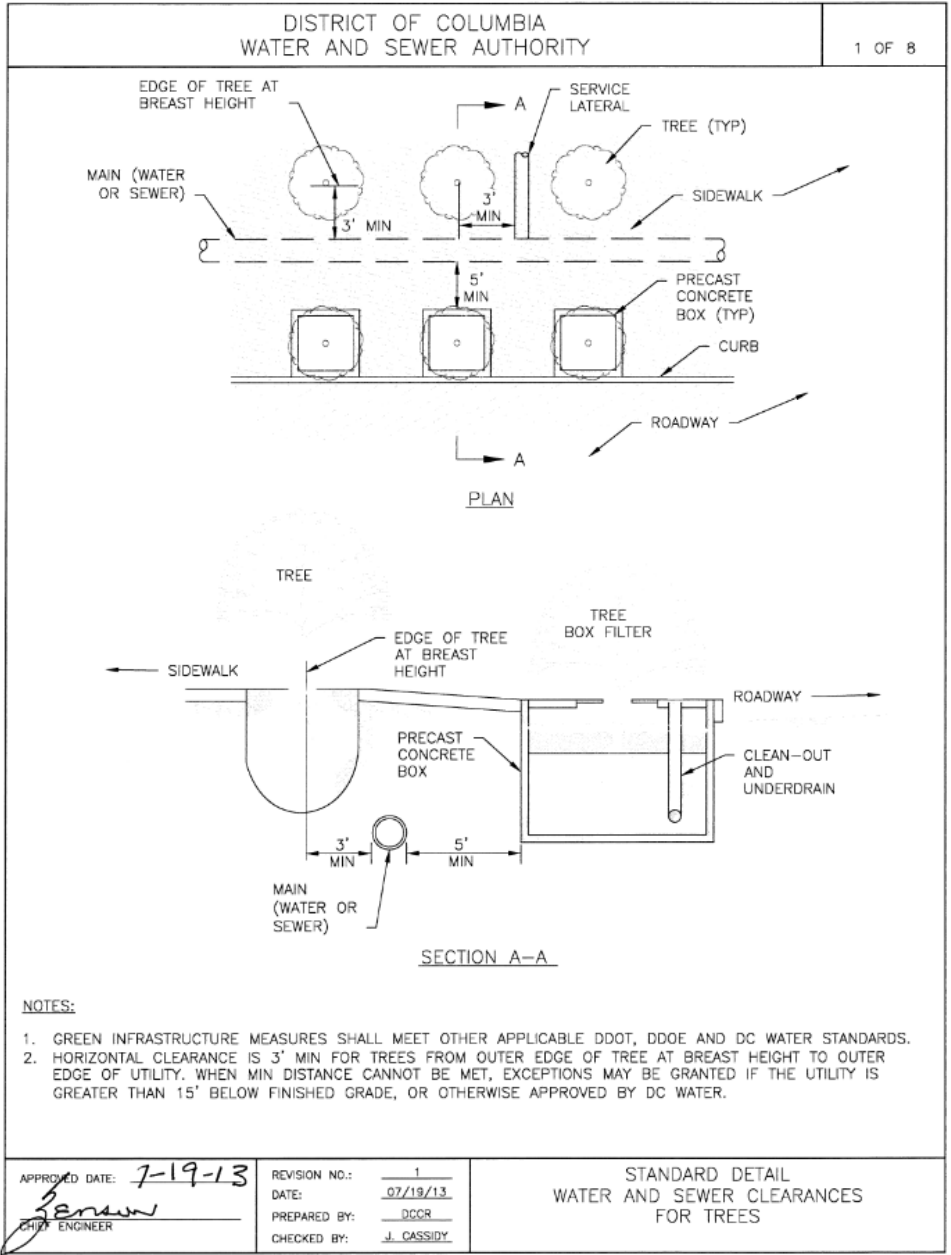


FIGURE 2

UTILITY AND STREET TREE DETAILS

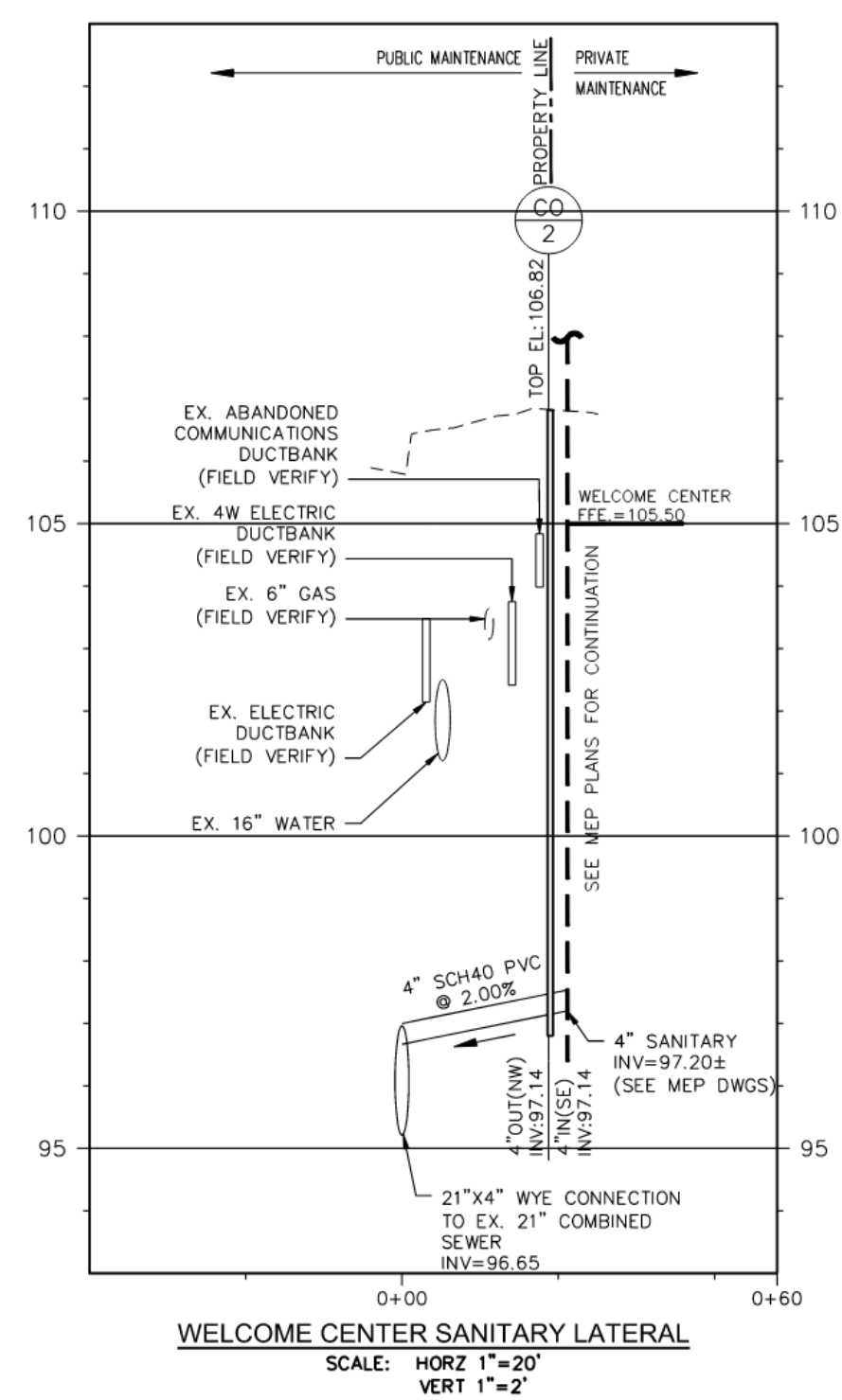


FIGURE 3

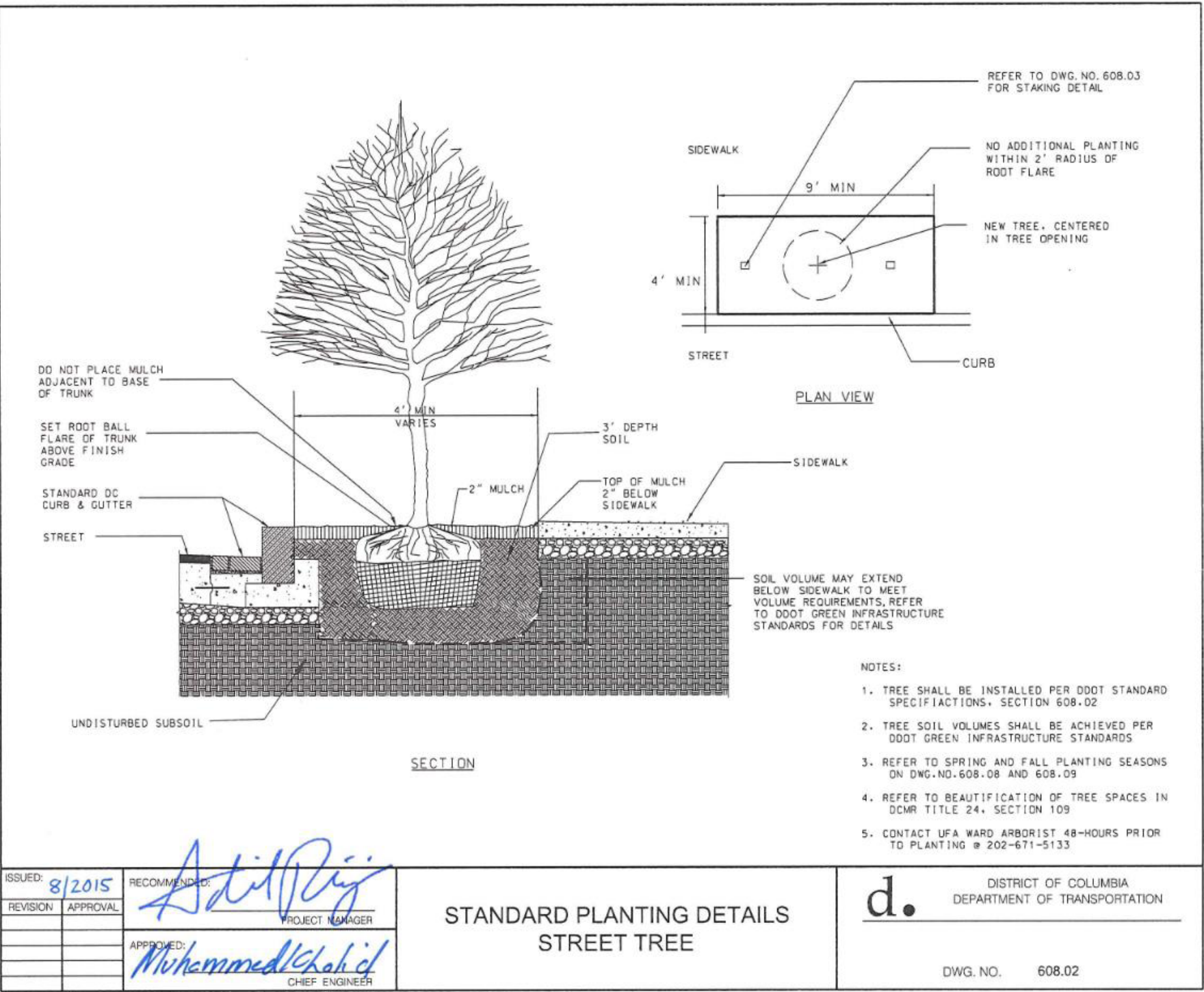


FIGURE 4



LANDSCAPE - ILLUSTRATIVE SITE RENDERING

