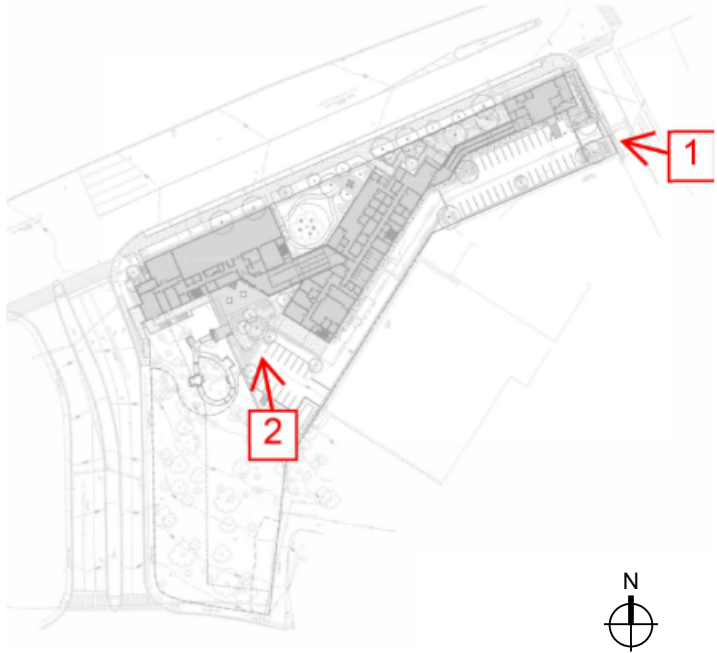


LANDSCAPE - REAR PATIO RENDERING



NEW YORK AVENUE SHELTER
1201 NEW YORK AVENUE NE
WASHINGTON, DC 20002

SHEET NUMBER	DRAWING NAME
PUD 0.50	LANDSCAPE - REAR PATIO

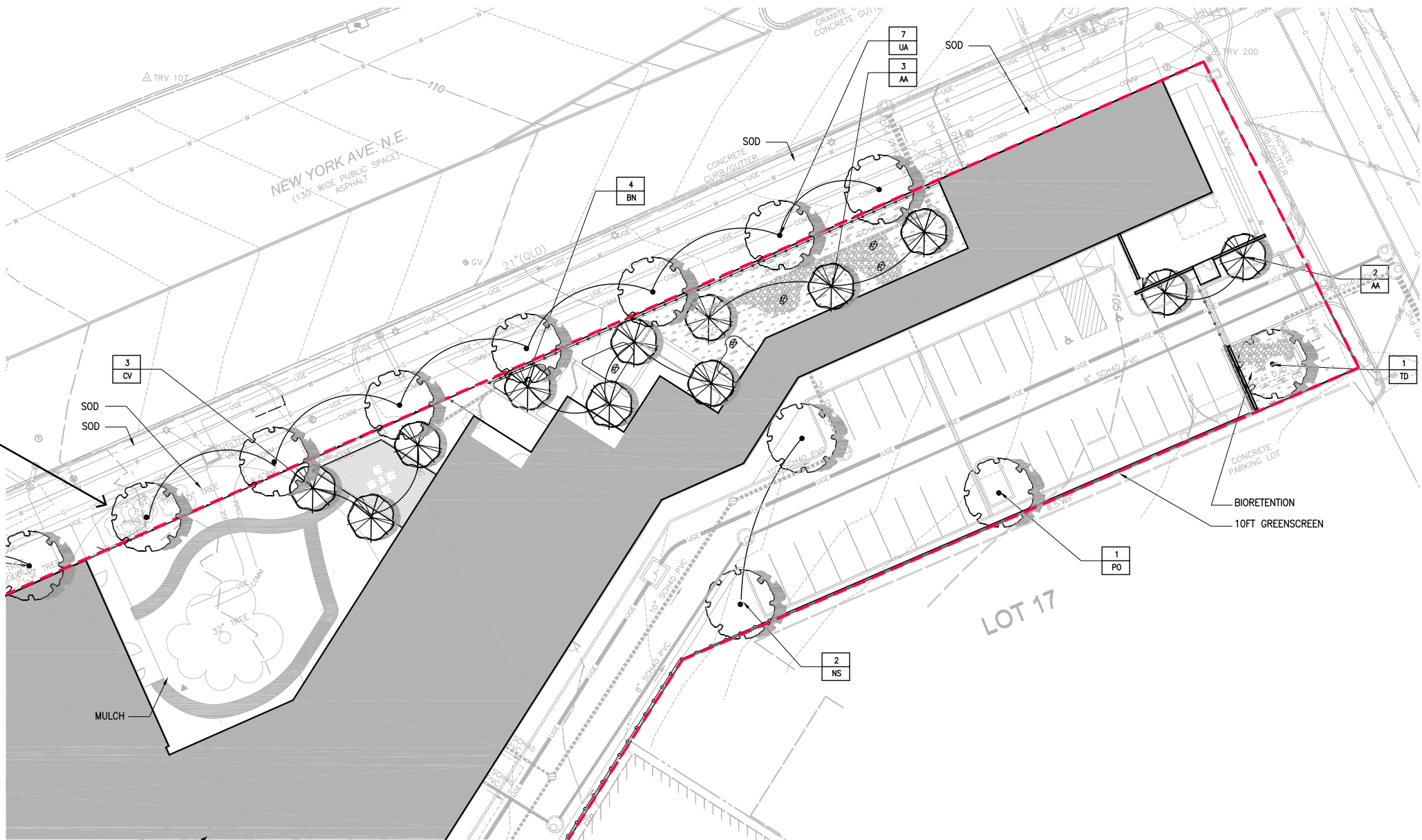


COMMISSION
District of Columbia
2024-2026
2024-2026
2024-2026

918
T 2024-2026
W <https://sorgdesign.com>

LANDSCAPE - TREE PLANTING PLAN - NORTH

STREET TREE
ZONE PLACED
ALONG
PROPERTY
LINE



NOTES:

- 1. All proposed plants are native or adaptive species to the Chesapeake Bay Region.
- 2. All new plant material must meet the standards in the ANLA American Standards for Nursery Stock (ANSI Z60.1-2014).
- 3. Companion plants (i.e. perennials, grasses, bulbs, shrubs, etc.) to be installed in a tree space must conform to the current version of the DDOT Design and Engineering Manual Chapter 47 - Landscape Design and DCMR Title 24 Section 109 - Beautification of Tree Spaces. Companion plants shall not exceed 3 feet in height, have a shallow root system and be planted at minimum 2 feet from the root flare (crown) of the street tree.
- 4. All new plant materials must meet the standards in the ANLA American Standards for Nursery Stock (ANSI Z60.1-2014).
- 5. The property owner is required to maintain the lot's minimum GAR score through appropriate stewardship and maintenance of landscape elements after the property is granted its Certificate of Occupancy.
- 6. Contractor shall contact Duff McCully, Ward _8_ Arborist at duff.mccully@dc.gov when the street trees are ready to be planted, providing at least 48 hours' notice

NOTES:

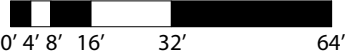
- 1. SEE SHEET L109 FOR GAR SCORECARD AND WORKSHEET.
- 2. SEE SWM #8214 FOR SWM PLANS.

TREE SCHEDULE

Key	Qty	Botanical Name	Common Name	Size	Remarks	GAR credit	Bio-Retention	Native
Decorative grasses:								
Trees								
AA	5	Amelanchier arborea	Serviceberry	2" cal., b&b	multi-stem*	B3	3	X
BN	1	Betula nigra 'Heritage'	Heritage River Birch	2.5" cal., b&b	multi-stem*	B4	6	X
CC	4	Cercis canadensis	Eastern Redbud	2" cal., b&b	multi-stem*	B3		X
TD		Taxodium distichum	Bald Cypress	2.5" cal., b&b		B4	2	X
CF	3	Cornus florida	Flowering Dogwood	2" cal., b&b	multi-stem*	B3		X
CV	3	Chionanthus virginicus	Frignetree	2" cal., b&b	multi-stem*	B3		X
NS	2	Nyssa sylvatica	Black Gum	2.5" cal., b&b		B4		X
PO	4	Platanus occidentalis	American Sycamore	2.5" cal., b&b		B4		X
UA	11	Ulmus americana	Princeton Elm	2.5" cal., b&b	Street Trees	N/A		X

*Caliper Measurement Note:
Caliper is equal to one-half of the total calipers of the three largest trunks.

--- GAR BOUNDARY

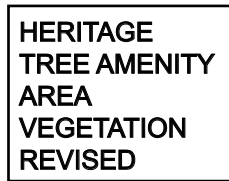


NEW YORK AVENUE
SHELTER
1201 NEW YORK AVENUE NE
WASHINGTON, DC 20002

SHEET NUMBER
PUD
0.51
DRAWING NAME
TREE
PLANTING
PLAN -
NORTH



918 U St NW, Washington, DC, 20001
T 202.796.7964
W https://sorg.design/



Native	Key	Qt.	Botanical Name	Common Name	Size	Remarks	Eco-Retention	GAR	Credit Category
			Shrubs:						
Y	CA	77	Ceanothus americanus	New Jersey Tea	3 Gal. cont.	plant 36" o.c.			B2
Y	CH	11	Clethra alnifolia 'Hummingbird'	Hummingbird Summersweet	3 Gal. cont.	plant 36" o.c.			B2
Y	CS		Cornus Sericea Cardinal	Red Twigged Dogwood	5 Gal. cont.	plant per plan	13		B2
Y	CS1		Cornus Sericea 'Flaviramea'	Yellow Twigged Dogwood	5 Gal. cont.	plant per plan	8		B2
HQS		11	Hydrangea quercifolia 'Sykes Dwarf'	Sykes Dwarf Hydrangea	3 gal., cont.	plant 36" o.c.			B2
Y	IGC	75	Ilex glabra compacta	Dwarf Inkberry	3 Gal. cont.	plant 24" o.c.	13		10
Y	IVB		Ilex verticillata 'Berry Poppins'	Berry Poppins Winterberry Holly	3 Gal. cont.	plant 36" o.c.	3		B2
Y	IVH	47	Ilex virginica 'Little Henry'	Virginia Sweetpire	3 Gal. cont.	plant 24" o.c.	12		B2
Y	MP		Myrica pennsylvanica	Bayberry	5 Gal. cont.	plant per plan	12		B2
Y	VID		Viburnum dentatum	Arrowwood Viburnum	5 Gal. cont.	plant per plan	6		B2
			Grasses/ Perennials/ Groundcovers						
Y	CIAT	8	Chasmodon latifolium	Northern Sea Oats	1 gal. cont.	plant 24" o.c.	38		B2
Y	CP	1,382	Carex pennsylvanica	Pennsylvania Sedge	1 Gal. cont.	plant 12" o.c.			B2
Y	CST	143	Carex stricta	Tussock Sedge	1 Gal. cont.	plant 18" o.c.			B2
Y	LS	48	Lonicera sempervirens	Honeysuckle Vine	3 Gal. cont.	plant per plan			B2
MC	36		Muhlenbergia capillaris	Pink Muhlygrass	3 Gal. cont.	plant 24" o.c.			B2
Y	MP2	17	Mattuccia Pennsylvanica	Ostrich Fern	3 Gal. cont.	plant 24" o.c.			B2
Y	OR	17	Osunda realis	Royal Fern	3 Gal. cont.	plant 24" o.c.			B2
Y	PV	8	Panicum virgatum	Switchgrass	3 Gal. cont.	plant 24" o.c.	93		B2
Y	PVH		Panicum virgatum 'Heavy Metal'	Heavy Metal Switchgrass	1 Gal. cont.	plant 24" o.c.	27		B2



LANDSCAPE PLAN - TREE PLANTING PLAN - SOUTH

TREE SCHEDULE

Key	Qty	Botanical Name	Common Name	Size	Remarks	GAR credit	Bio-Retention	Native
Decorative grasses:								
Trees								
AA	5	Amelanchier arborea	Serviceberry	2" cal., b&b	multi-stem*	B3	3	X
BN	1	Betula nigra 'Heritage'	Heritage River Birch	2.5" cal., b&b	multi-stem*	B4	6	X
CC	4	Cercis canadensis	Eastern Redbud	2" cal., b&b	multi-stem*	B3		X
TD		Taxodium distichum	Bald Cypress	2.5" cal., b&b		B4	2	X
CF	3	Cornus florida	Flowering Dogwood	2" cal., b&b	multi-stem*	B3		X
CV	3	Chionanthus virginicus	Fringetree	2" cal., b&b	multi-stem*	B3		X
NS	2	Nyssa sylvatica	Black Gum	2.5" cal., b&b		B4		X
PO	4	Platanus occidentalis	American Sycamore	2.5" cal., b&b		B4		X
UA	11	Ulmus americana	Princeton Elm	2.5" cal., b&b	Street Trees	N/A		X

*Caliper Measurement Note:
Caliper is equal to one-half of the total calipers of the three largest trunks.

--- GAR BOUNDARY

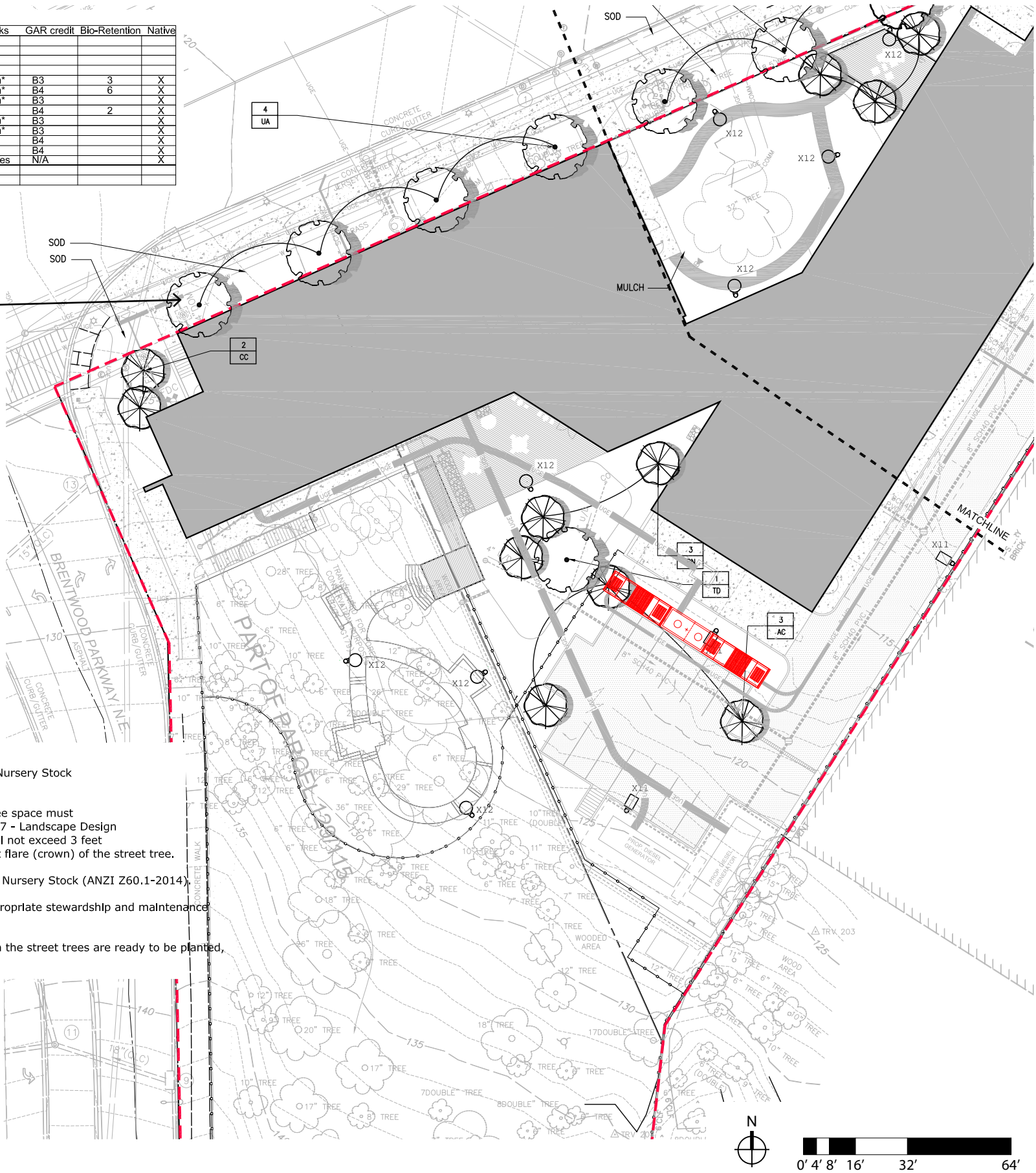
STREET TREE
ZONE PLACED
ALONG
PROPERTY
LINE

NOTES:

- All proposed plants are native or adaptive species to the Chesapeake Bay Region.
- All new plant material must meet the standards in the ANLA American Standards for Nursery Stock (ANSI Z60.1-2014).
- Companion plants (i.e. perennials, grasses, bulbs, shrubs, etc.) to be installed in a tree space must conform to the current version of the DDOT Design and Engineering Manual Chapter 47 - Landscape Design and DCMR Title 24 Section 109 - Beautification of Tree Spaces. Companion plants shall not exceed 3 feet in height, have a shallow root system and be planted at minimum 2 feet from the root flare (crown) of the street tree.
- All new plant materials must meet the standards in the ANLA American Standards for Nursery Stock (ANSI Z60.1-2014).
- The property owner is required to maintain the lot's minimum GAR score through appropriate stewardship and maintenance of landscape elements after the property is granted its Certificate of Occupancy.
- Contractor shall contact Duff McCully, Ward _8_ Arborist at duff.mccully@dc.gov when the street trees are ready to be planted, providing at least 48 hours' notice

NOTES:

- SEE SHEET L109 FOR GAR SCORECARD AND WORKSHEET.
- SEE SWM #8214 FOR SWM PLANS.



NEW YORK AVENUE
SHELTER
1201 NEW YORK AVENUE NE
WASHINGTON, DC 20002

SHEET NUMBER
PUD
0.52
DRAWING NAME
TREE
PLANTING
PLAN -
SOUTH



918 U St NW, Washington, DC, 20001
T 202.796.7964
W https://sorg.design/