



# THE HERITAGE

## NEW YORK AVENUE SHELTER

1201 NEW YORK AVENUE NE, WASHINGTON, D.C., 20002

### Planned Unit Development - Submission Updates

9.2.2025





# TABLE OF CONTENTS

0.1	COVER SHEET
0.2	TABLE OF CONTENTS
0.3	TEAM LIST
0.4	SITE LOCATION
0.5	SITE LOCATION AND CONTEXT
0.6	PUBLIC TRANSIT
0.7	SITE CONTEXT
0.8	SITE CONTEXT
0.9	STREET GRIDS
0.10	CURRENT SITE ZONING: RF-1
0.11	FLUM DESIGNATION
0.12	GPM DESIGNATION
0.13	PROPOSED USE CATEGORY - TABULATED DEVELOPMENT DATA
0.14	BUILDING MASSING WITHIN POTENTIAL FUTURE DEVELOPMENT
0.15	SITE PLAN
0.16	SITE PLAN - CONSERVATION AREAS
0.17	ARCHITECTURAL SITE PLAN
0.18	SITE PLAN - PARKING
0.19	BUILDING PROGRAM
0.20	PROGRAM STACKING
0.21	FIRST FLOOR PLAN (EAST AND WEST WINGS)
0.22	FIRST FLOOR PLAN (WELCOME CENTER)
0.23	SECOND FLOOR PLAN (EAST AND WEST WINGS)
0.24	THIRD FLOOR PLAN (EAST AND WEST WINGS)
0.25	FOURTH FLOOR PLAN (EAST AND WEST WINGS)
0.26	FIFTH AND SIXTH FLOOR PLANS (EAST WING)
0.27	ROOF PLAN
0.28	FACADE INSPIRATION - HECHT WAREHOUSE
0.29	BUILDING ELEVATIONS - NORTH AND EAST
0.30	BUILDING ELEVATIONS - SOUTH AND WEST
0.31	WELCOME CENTER
0.32	BUILDING SECTIONS - WEST WING
0.33	BUILDING SECTION - EAST WING
0.34	NEW YORK AVENE NE RENDERED ELEVATION
0.35	MT. OLIVET BYWAY RENDERED ELEVATION
0.36	FAIRVIEW AVENUE NE RENDERED ELEVATION
0.37	NY AVE STREETSCAPE
0.38	NET ZERO DESIGN ELEMENTS
0.39	ENLARGED PLANS - QUEUEING
0.40	ENLARGED PLANS - COURTS
0.41	ENLARGED PLAN - LOADING
0.41	ENLARGED PLANS - PARKING
0.43	ENLARGED PLANS - BICYCLE PARKING
0.44	ENLARGED PLANS - PENTHOUSE
0.45	ENLARGED PLANS - PENTHOUSE
0.46	LANDSCAPE PLAN
0.47	LANDSCAPE - SITE FENCING
0.48	LANDSCAPE - SITE LIGHTING
0.49	LANDSCAPE - FRONT ENTRY RENDERING
0.50	LANDSCAPE - REAR PATIO RENDERING
0.51	LANDSCAPE - TREE PLANTING PLAN - NORTH
0.51A	LANDSCAPE - SHRUB PLANTING PLAN - NORTH
0.52	LANDSCAPE - TREE PLANTING PLAN - SOUTH
0.51B	LANDSCAPE - SHRUB PLANTING PLAN - SOUTH
0.53	LANDSCAPE - BIO-RETENTION PLANTS
0.54	LANDSCAPE - NON BIO-RETENTION PLANTS
0.55	SITE CIRCULATION PLAN
0.56	VEHICULAR ACCESS
0.57	EXTERIOR RENDERING - NEW YORK AVENUE
0.57A	EXTERIOR RENDERING - AERIAL PERSPECTIVE
0.58	EXTERIOR RENDERING - EAST AND WEST WINGS
0.59	EXTERIOR RENDERING - TERRACES
0.60	INTERIOR RENDERINGS
0.61	INTERIOR RENDERINGS
	<b>APPENDIX</b>
0.63	CIVIL - EXISTING CONDITIONS PLAN
0.64	CIVIL - EXISTING CONDITIONS NOTES
0.65	CIVIL - SITE PLAN
0.66	CIVIL - GRADING PLAN
0.67	CIVIL - GRADE ANALYSIS PLAN
0.68	CIVIL - SITE UTILITY PLAN
0.69	CIVIL - STORMWATER MANAGEMENT PLAN
0.70	SURVEYOR'S PLAT / TRANSFER OF JURISDICTION (TOJ)
0.71	TREE SURVEY
0.72	LEED GOLD TARGETED - SCORECARD

TEAM LIST

CLIENT:

WE ARE

WASHINGTON

GOVERNMENT OF THE DISTRICT OF COLUMBIA

DC

MURIEL BOWSER, MAYOR

DISTRICT OF COLUMBIA

DEPARTMENT  
OF GENERAL  
SERVICES (DGS)

2000 14th St NW 8th Floor,  
Washington, DC 20009

PREPARED ON BEHALF OF:

DISTRICT OF COLUMBIA

DEPARTMENT OF  
HUMAN SERVICES (DHS)

64 New York Ave NE #6,  
Washington, DC 20002

ARCHITECT:

SORG

918 U St NW  
Washington, DC, 20001

CIVIL ENGINEER:

AMT  
ENGINEERING

10 G St NE #430, Washington,  
DC, 20002

LANDSCAPE ARCHITECT:

CGLA

1025 Connecticut Ave NW  
#1000  
Washington, DC, 20036

STRUCTURAL ENGINEER:

TY-LIN  
(SILMAN)

1053 31st St NW,  
Washington, DC, 20007

MECHANICAL, ELECTRICAL,  
AND PLUMBING ENGINEER:

SETTY AND  
ASSOCIATES

1415 Elliot Pl NW Ste 100,  
Washington, DC, 20007

ZONING ATTORNEY:

COZEN  
O’CONNOR

2001 M Street NW  
Ste 500,  
Washington, DC, 20036

TRAFFIC ENGINEER:

WELLS +  
ASSOCIATES

1420 Spring Hill Rd #610,  
McLean, VA 22102

DGS

DEPARTMENT OF  
GENERAL SERVICES

BUILD

MAINTAIN

SUSTAIN

NEW YORK AVENUE  
SHELTER

1201 NEW YORK AVENUE NE  
WASHINGTON, DC 20002

SHEET NUMBER

DRAWING NAME

PUD  
0.3

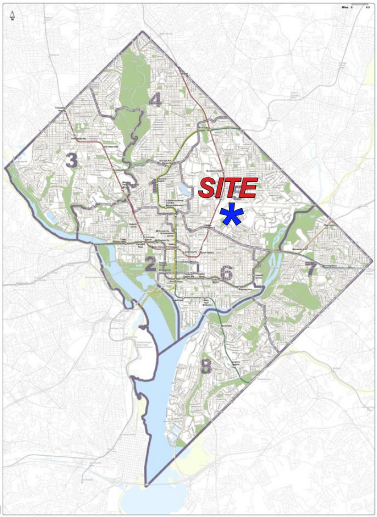
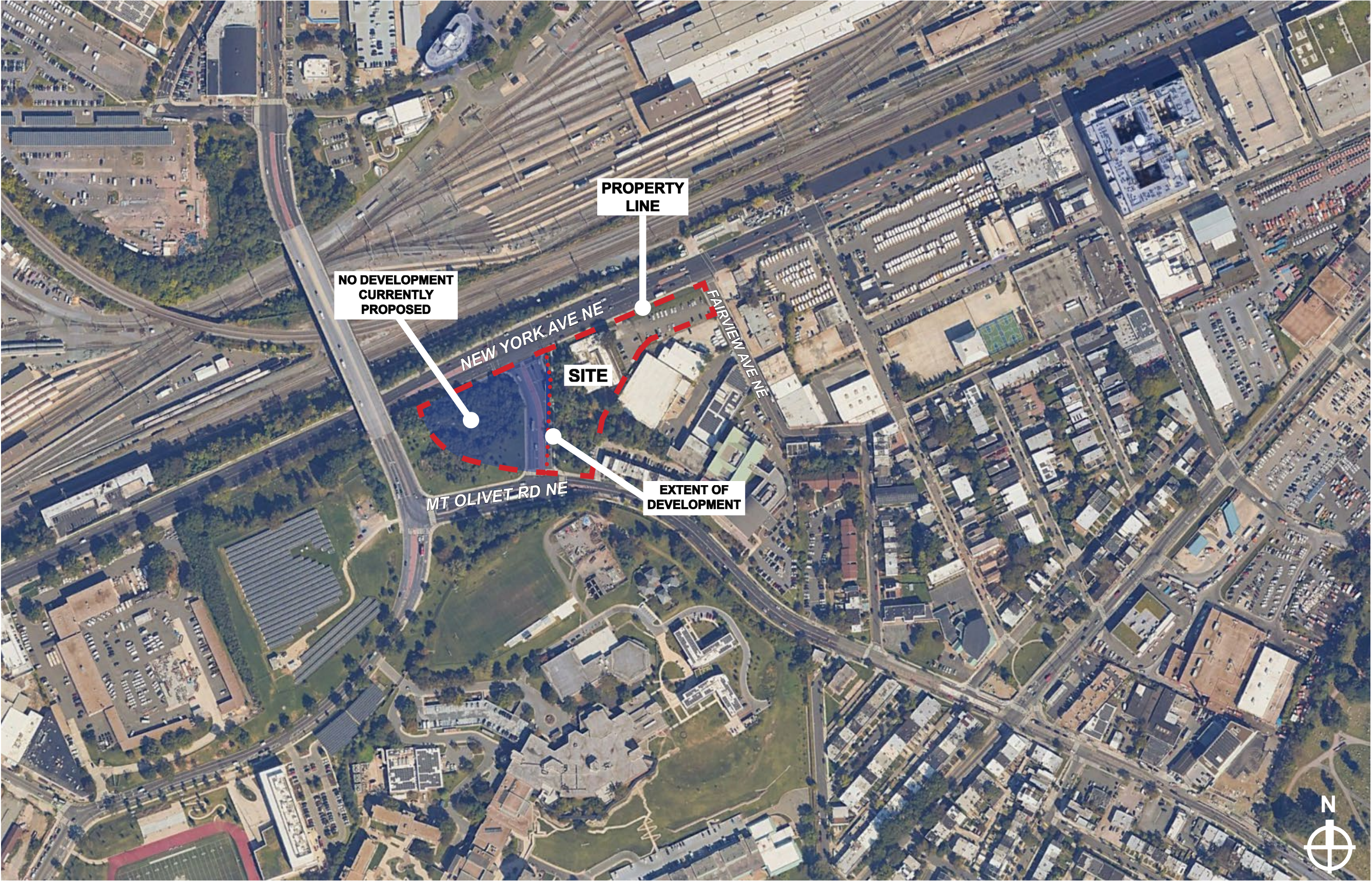
TEAM LIST

Sorg

918 U St NW, Washington, DC, 20001  
T 202.796.7964  
W <https://sorg.design/>



SITE LOCATION



DGS

DEPARTMENT OF  
GENERAL SERVICES

BUILD

MAINTAIN

SUSTAIN

NEW YORK AVENUE  
SHELTER

1201 NEW YORK AVENUE NE  
WASHINGTON, DC 20002

SHEET NUMBER	DRAWING NAME
PUD 0.4	SITE LOCATION

Sorg

918 U St NW, Washington, DC, 20001  
T 202.796.7964  
W <https://sorg.design/>