

# **CEDAR TREE ACADEMY PUBLIC CHARTER SCHOOL** 701 HOWARD ROAD SE, WASHINGTON DC 20020

**A2 Design Inc**  
1440 N. Edgewood Street, Arlington, VA 22101  
703.448.6700

**Wiles Mensch**  
510 8th Street SE, Washington, DC 20003  
202.552.0248

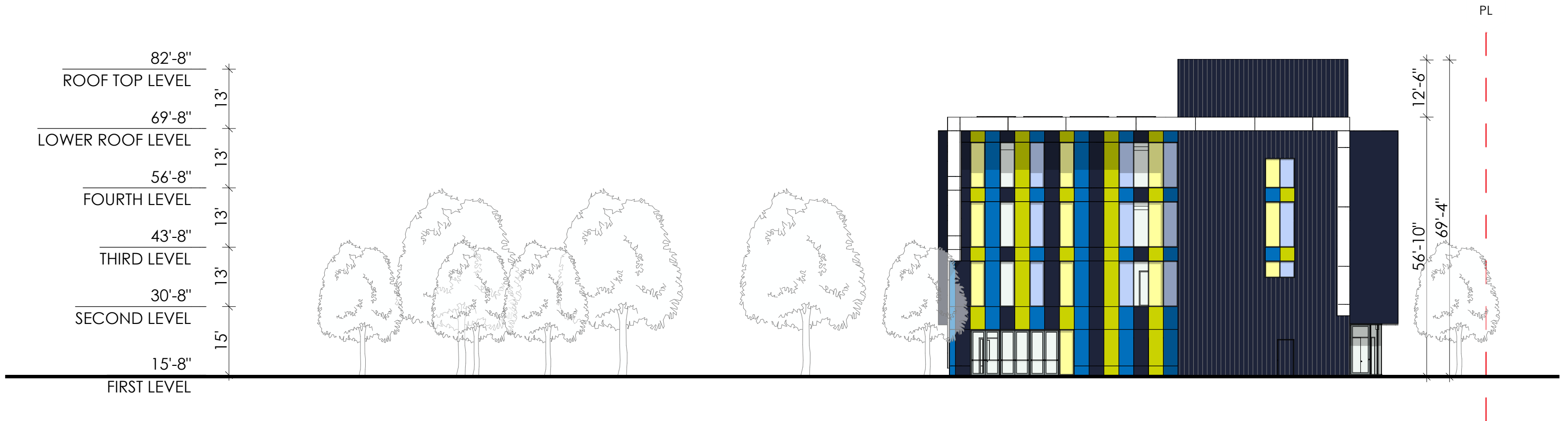
**Symmetra Design**  
727 15th Street, NW 12th Fl Washington DC 20005  
202.370.6000

**Cozen O'Connor**  
2001 M Street NW, Ste 500, Washington DC 20036  
202.747.0769

## **WEST BUILDING ELEVATION** scale: 1" = 20'

**A-023**

**ZONING COMMISSION**  
District of Columbia  
CASE NO.24-23  
EXHIBIT NO.15A5



## CEDAR TREE ACADEMY PUBLIC CHARTER SCHOOL

701 HOWARD ROAD SE, WASHINGTON DC 20020

**A2 Design Inc**  
1440 N. Edgewood Street, Arlington, VA 22101  
703.448.6700

**Wiles Mensch**  
510 8th Street SE, Washington, DC 20003  
202.552.0248

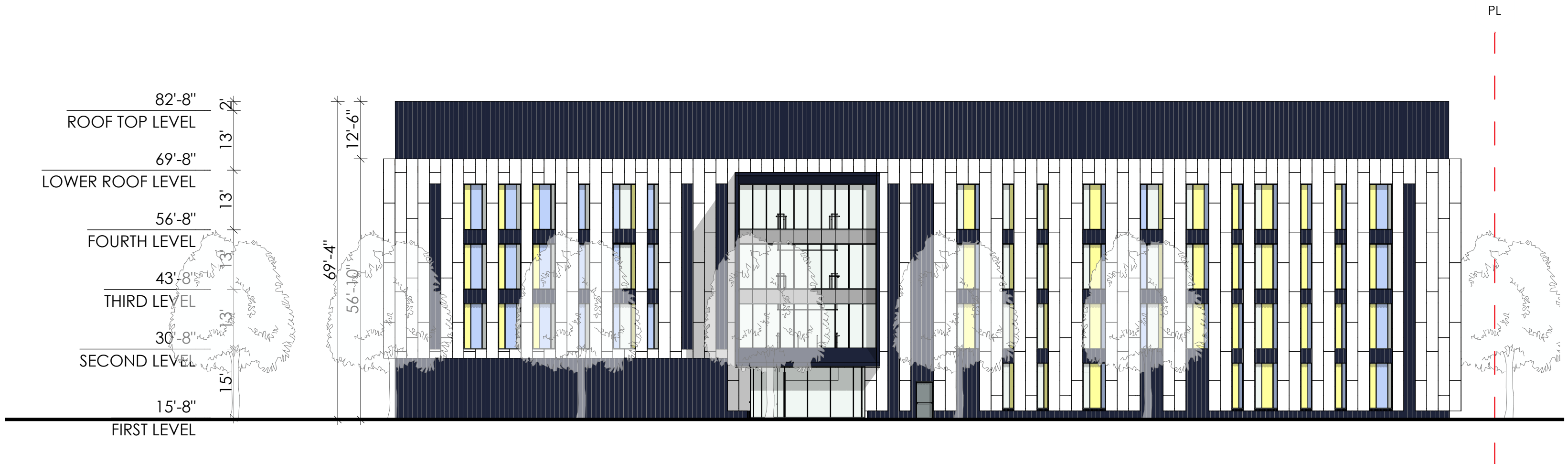
**Symmetra Design**  
727 15th Street, NW 12th Fl Washington DC 20005  
202.370.6000

**Cozen O'Connor**  
2001 M Street NW, Ste 500, Washington DC 20036  
202.747.0769

## SOUTH BUILDING ELEVATION

scale: 1" = 20'

A-024



**CEDAR TREE ACADEMY PUBLIC CHARTER SCHOOL**  
701 HOWARD ROAD SE, WASHINGTON DC 20020

**A2 Design Inc**  
1440 N. Edgewood Street, Arlington, VA 22101  
703.448.6700

**Wiles Mensch**  
510 8th Street SE, Washington, DC 20003  
202.552.0248

**Symmetra Design**  
727 15th Street, NW 12th Fl Washington DC 20005  
202.370.6000

**Cozen O'Connor**  
2001 M Street NW, Ste 500, Washington DC 20036  
202.747.0769

**EAST BUILDING ELEVATION**  
scale: 1" = 20'

**A-025**



**EM-2A**  
PHENOLIC PANEL-  
FUNDERMAX  
F0717 NT ATLANTIC

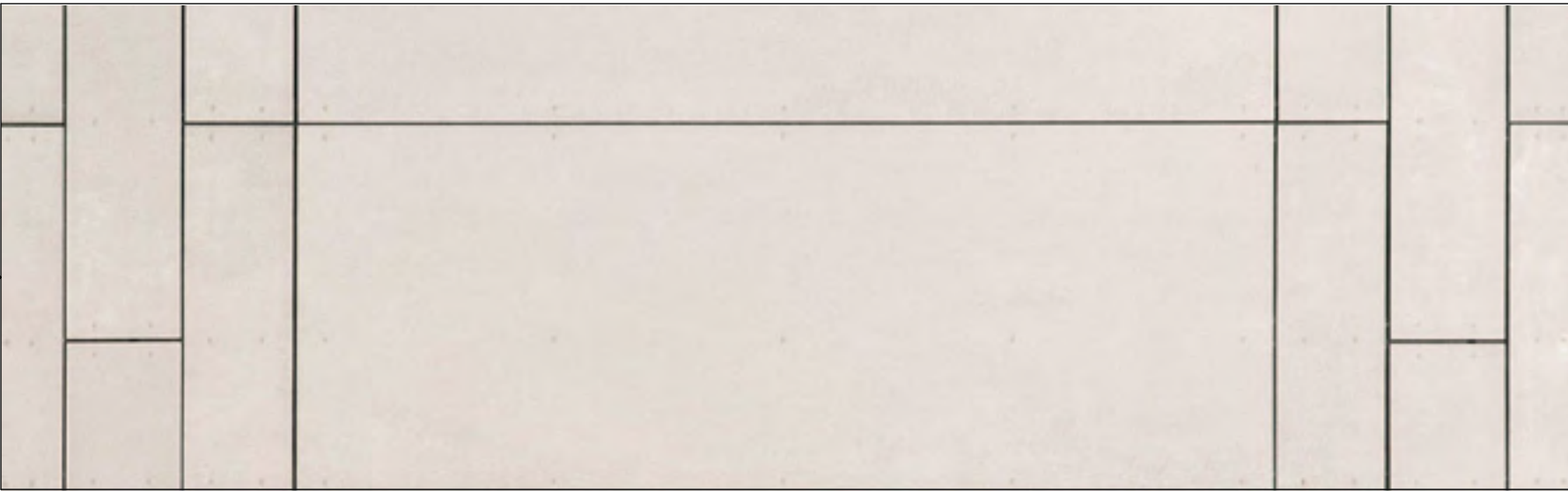
**EM-2C**  
PHENOLIC PANEL-  
FUNDERMAX  
F0725 NT  
YELLOWISH GREEN

**EM- 2B**  
PHENOLIC PANEL-  
FUNDERMAX  
F0702 NT NIGHT BLUE

**EM-1**  
EFIS (EXTERIOR  
INSULATION AND  
FINISH SYSTEM)  
SILVER GRAY / DOVE  
GRAY WITH REVEALS



**EM-3**  
METAL WALL PANEL-  
MORIN CORP CORRUGATED ARCHITECTURAL METAL WALL  
COLOR TO MATCH F0702 NIGHT BLUE



**CEDAR TREE ACADEMY PUBLIC CHARTER SCHOOL**  
701 HOWARD ROAD SE, WASHINGTON DC 20020

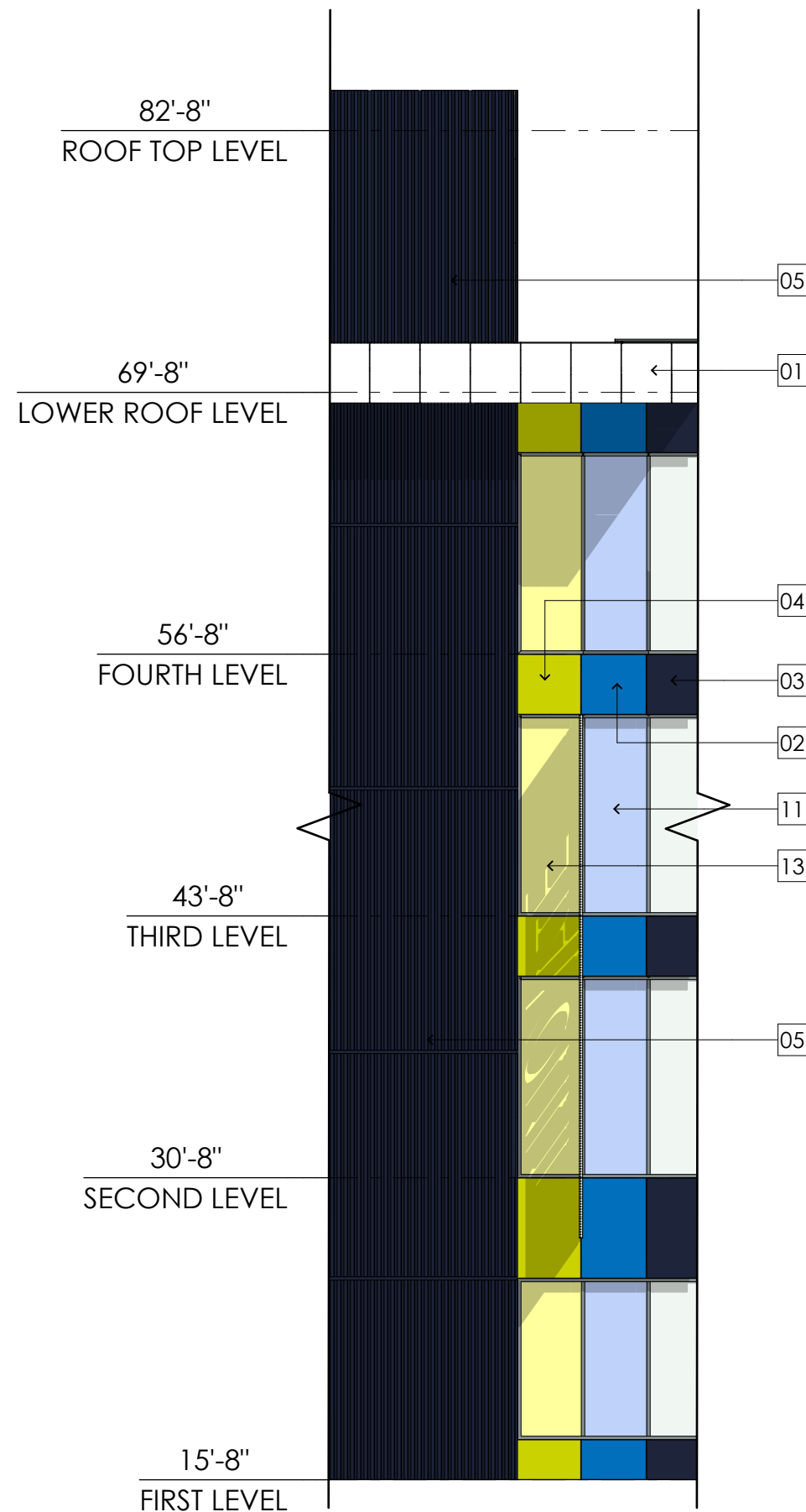
**A2 Design Inc**  
1440 N. Edgewood Street, Arlington, VA 22101  
703.448.6700

**Wiles Mensch**  
510 8th Street SE, Washington, DC 20003  
202.552.0248

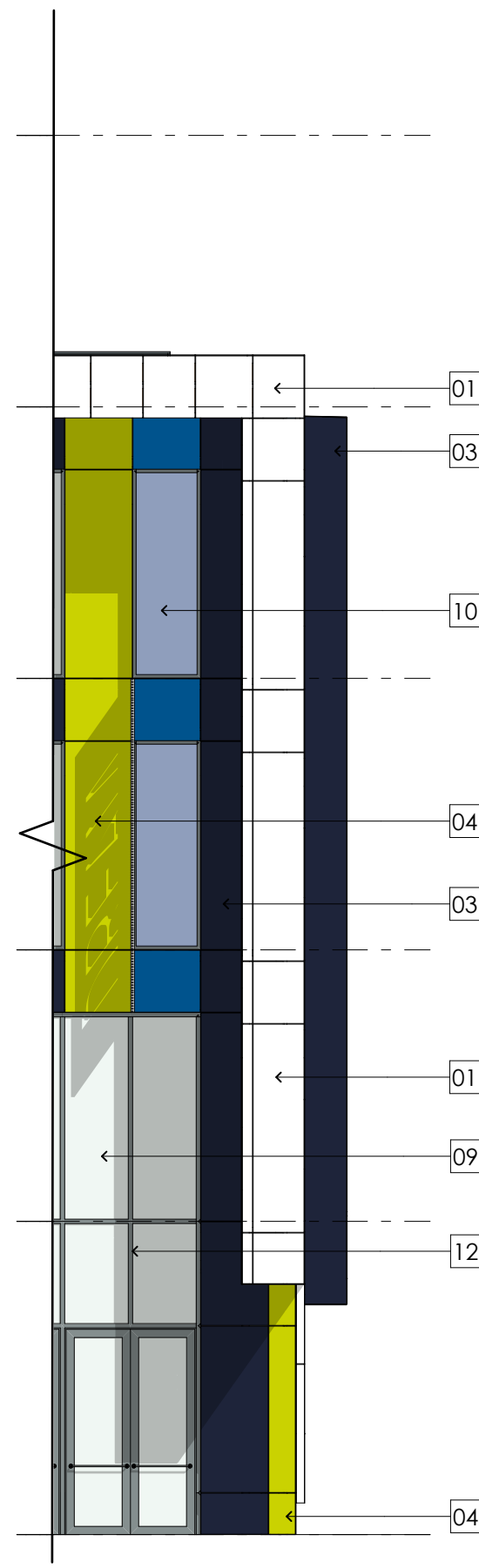
**Symmetra Design**  
727 15th Street, NW 12th Fl Washington DC 20005  
202.370.6000

**Cozen O'Connor**  
2001 M Street NW, Ste 500, Washington DC 20036  
202.747.0769

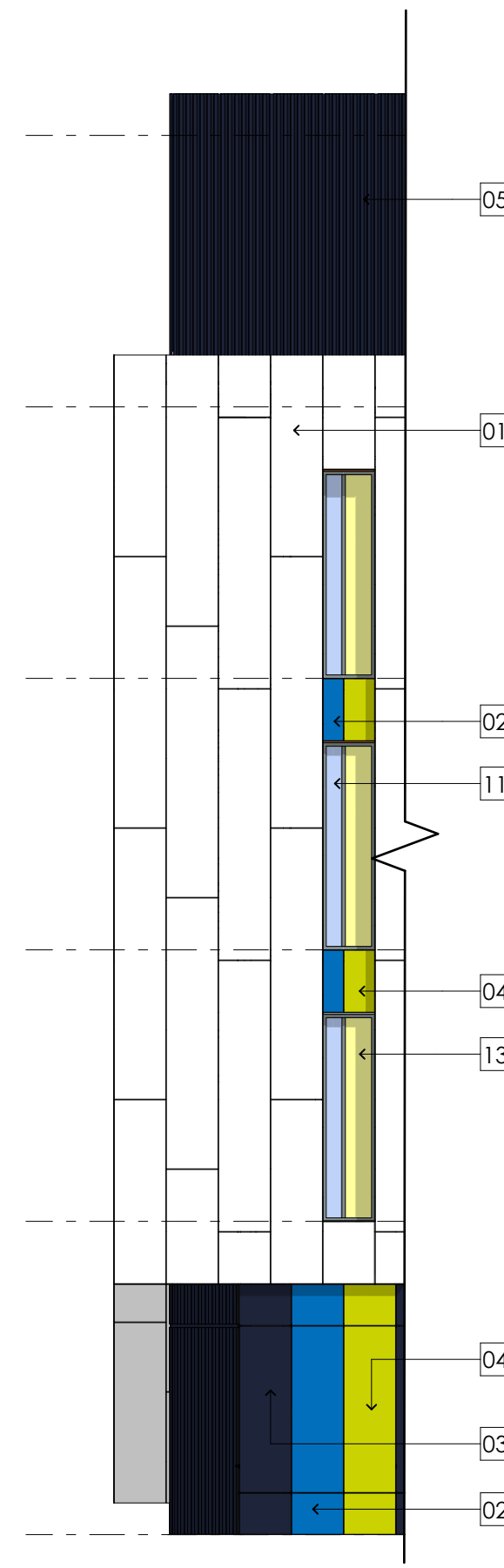




**1** **DETAIL AT EGRESS TOWER**  
SCALE: 1/8" = 1'-0"



**2** **DETAIL AT CAFETERIA ENTRY**  
SCALE: 1/8" = 1'-0"



**1** **DETAIL AT CAFETERIA CORNER**  
SCALE: 1/8" = 1'-0"

## SHEET NOTES

- 01 EM-1: EFIS (EXTERIOR INSULATION AND FINISH SYSTEM) SILVER GRAY / DOVE GRAY WITH REVEALS
- 02 EM-2A: PHENOLIC PANEL- FUNDERMAX F0717 NT ATLANTIC
- 03 EM-2B: PHENOLIC PANEL- FUNDERMAX F0702 NT NIGHT BLUE
- 04 EM-2C: PHENOLIC PANEL- FUNDERMAX F0725 NT YELLOWISH GREEN
- 05 EM-3: METAL WALL PANEL- MORIN CORP ARCHITECTURAL CORRUGATED METAL WALL PANEL, MATRIX MX-1, COLOR TO MATCH EM-2B
- 06 METAL WALL PANEL- MORIN CORP ARCHITECTURAL PERFORATED / CORRUGATED METAL WALL PANEL, MATRIX MX-1, COLOR TO MATCH EM-2B
- 07 SIGNAGE LETTERS: LASER AUT ALUMINUM PLATE SIGNAGE LETTERS ON STAND-OFFS
- 08 VERTICAL SIGNAGE / GRAPHICS SCREEN. PAINTED STEEL TUBE WITH PERFORATED METAL INFILL PANELS WITH INTEGRATED LED LIGHTING
- 09 G-1: GLASS, CLEAR
- 10 G-2 : COLORED TRANSPARENT GLASS / COLOR 1 (BLUE): 1" INSULATED
- 11 G-3: COLORED TRANSPARENT GLASS / COLOR 2 (YELLOW): 1" INSULATED
- 12 ANODIZED ALUMINUM CURTAIN WALL / STOREFRONT FRAME
- 13 CONCRETE SIDEWALK
- 14 DELIVERY ENTRY DOOR
- 15 MAIN SCHOOL ENTRY
- 16 ENTRY CANOPY



## CEDAR TREE ACADEMY PUBLIC CHARTER SCHOOL

701 HOWARD ROAD SE, WASHINGTON DC 20020

**A2 Design Inc**  
1440 N. Edgewood Street, Arlington, VA 22101  
703.448.6700

**Wiles Mensch**  
510 8th Street SE, Washington, DC 20003  
202.552.0248

**Symmetra Design**  
727 15th Street, NW 12th Fl Washington DC 20005  
202.370.6000

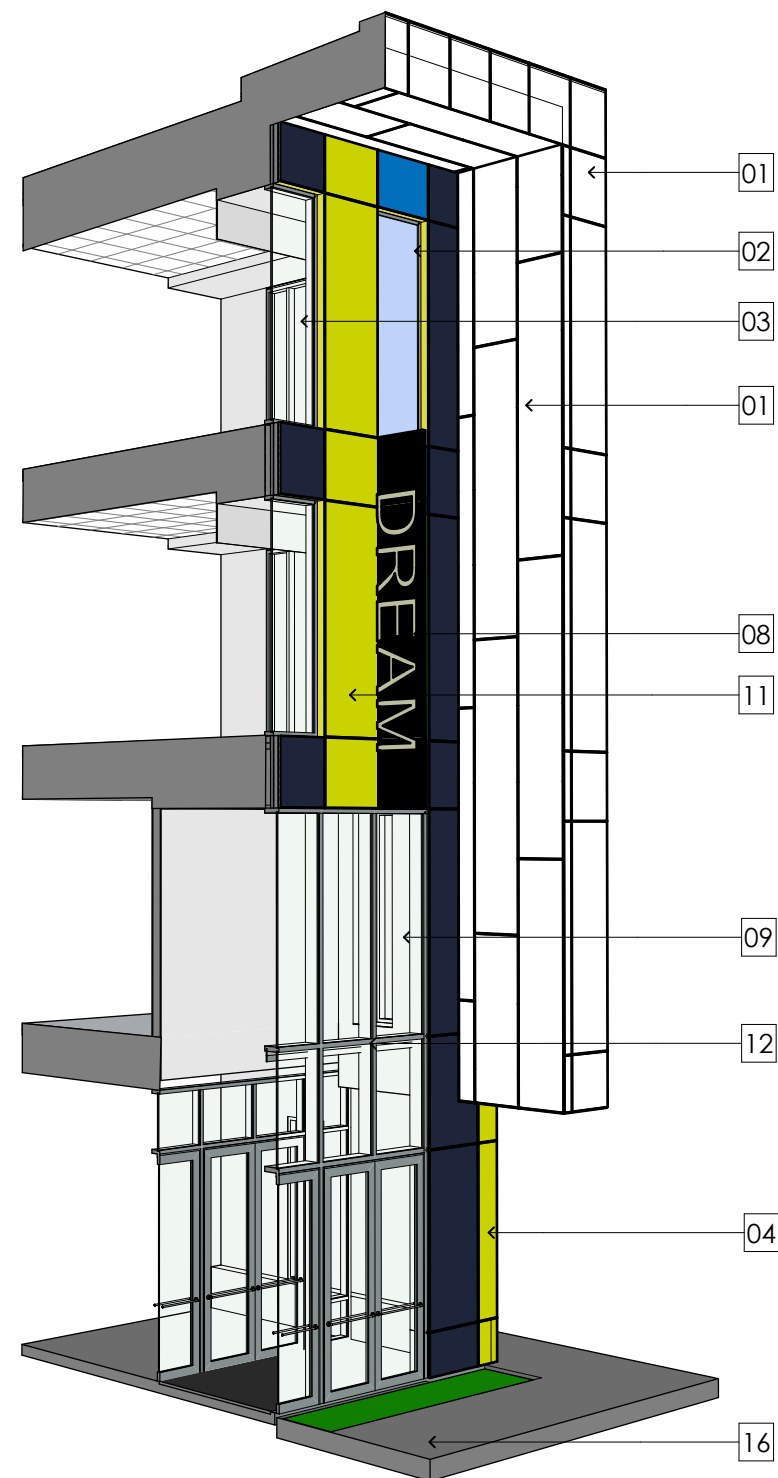
**Cozen O'Connor**  
2001 M Street NW, Ste 500, Washington DC 20036  
202.747.0769

MATERIAL DETAILING

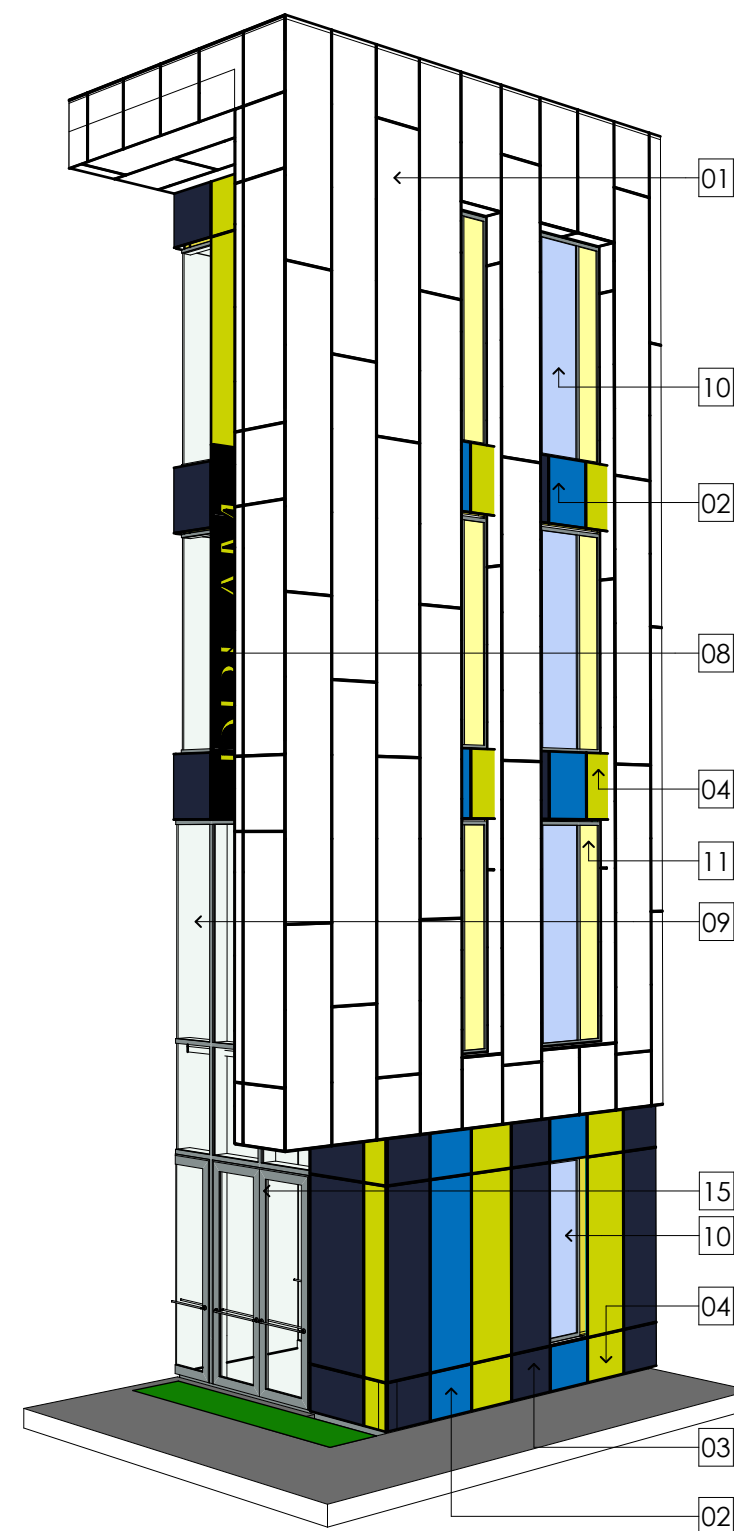
A-027



**1** **DETAIL AT EGREES TOWER**  
SCALE: 3/8" = 1'-0"



**2** **DETAIL AT CAFETERIA ENTRY**  
SCALE: 3/8" = 1'-0"



**3** **DETAIL AT CAFETERIA CORNER**  
SCALE: 3/8" = 1'-0"

## SHEET NOTES

- 01 EM-1: EFIS (EXTERIOR INSULATION AND FINISH SYSTEM) SILVER GRAY / DOVE GRAY WITH REVEALS
- 02 EM-2A: PHENOLIC PANEL- FUNDERMAX F0717 NT ATLANTIC
- 03 EM-2B: PHENOLIC PANEL- FUNDERMAX F0702 NT NIGHT BLUE
- 04 EM-2C: PHENOLIC PANEL- FUNDERMAX F0725 NT YELLOWISH GREEN
- 05 EM-3: METAL WALL PANEL- MORIN CORP ARCHITECTURAL CORRUGATED METAL WALL PANEL, MATRIX MX-1, COLOR TO MATCH EM-2B
- 06 METAL WALL PANEL- MORIN CORP ARCHITECTURAL PERFORATED / CORRUGATED METAL WALL PANEL, MATRIX MX-1, COLOR TO MATCH EM-2B
- 07 SIGNAGE LETTERS: LASER AUT ALUMINUM PLATE SIGNAGE LETTERS ON STAND-OFFS
- 08 VERTICAL SIGNAGE / GRAPHICS SCREEN. PAINTED STEEL TUBE WITH PERFORATED METAL INFILL PANELS WITH INTEGRATED LED LIGHTING
- 09 G-1: GLASS, CLEAR
- 10 G-2 : COLORED TRANSPARENT GLASS / COLOR 1 (BLUE): 1" INSULATED
- 11 G-3: COLORED TRANSPARENT GLASS / COLOR 2 (YELLOW): 1" INSULATED
- 12 ANODIZED ALUMINUM CURTAIN WALL / STOREFRONT FRAME
- 13 CONCRETE SIDEWALK
- 14 DELIVERY ENTRY DOOR
- 15 MAIN SCHOOL ENTRY
- 16 ENTRY CANOPY



## CEDAR TREE ACADEMY PUBLIC CHARTER SCHOOL

701 HOWARD ROAD SE, WASHINGTON DC 20020

**A2 Design Inc**  
1440 N. Edgewood Street, Arlington, VA 22101  
703.448.6700

**Wiles Mensch**  
510 8th Street SE, Washington, DC 20003  
202.552.0248

**Symmetra Design**  
727 15th Street, NW 12th Fl Washington DC 20005  
202.370.6000

**Cozen O'Connor**  
2001 M Street NW, Ste 500, Washington DC 20036  
202.747.0769

MATERIAL DETAILING

A-028