

MECHANICAL PENTHOUSE WITH
PERFORATED METAL PANEL
SCREE AND 1:1 SETBACK

WINDOW WALL PANELS ARE A
MIXTURE OF VISION GLASS,
VISION GLASS W/ ORGANIC
FRIT, TRANSLUCENT GLASS W/
FILM, AND OPAQUE GLASS
WITH INSULATED BACK PAN

PRE-WEATHERED CORTEN
STEEL CANOPY

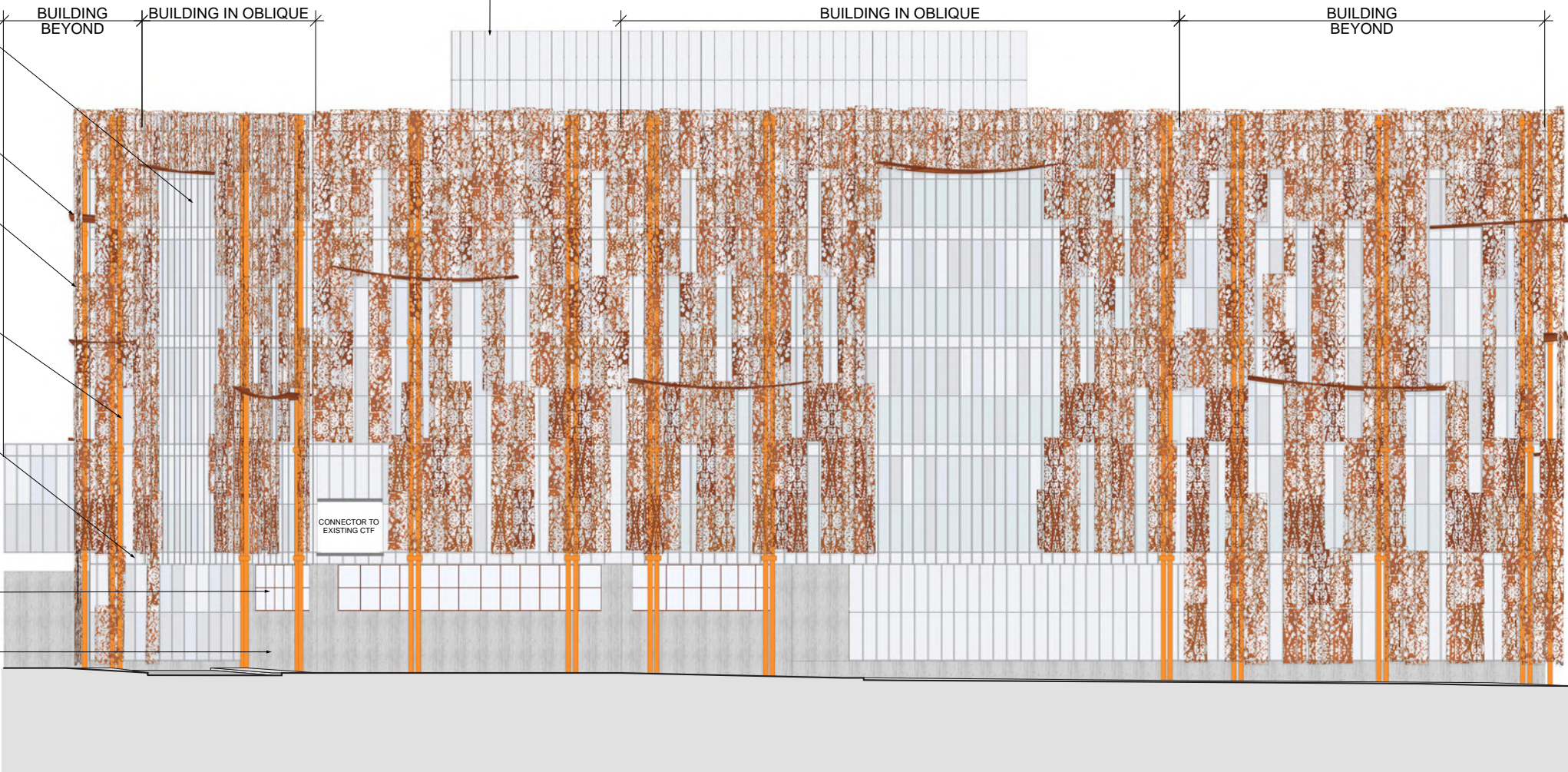
POWDER COATED ALUMINUM
PANEL SCRIM W/ BIOPHILIC
INSPIRED PATTERN,
SUPPORTED ON STEEL FRAME
HUNG FROM WINDOW WALL

PAINTED STEEL COLUMN,
ATTACHED TO SLAB EDGE
BETWEEN VERTICAL MULLIONS

ALUMINUM FRAMED WINDOW
WALL, ATTACHED TO TOP AND
BOTTOM OF SLAB, SPANDREL
AT SLAB EDGE

WOVEN METAL MESH W/ COLOR
TO MATCH VEIL

BOARD-FORM CONCRETE
BASE WALL W/ INTEGRAL
COLOR



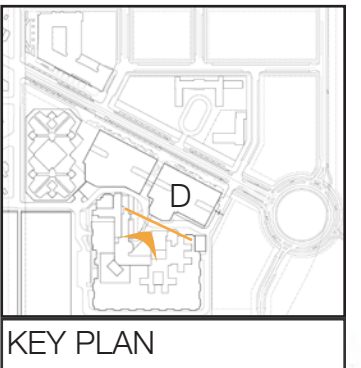
ELEV. 170'-0"
PENTHOUSE

ELEV. 150'-0"
TOP OF ROOF

ELEV. 62'-0"
BUILDING HEIGHT
MEASURING POINT

ELEV. 42'-0"
FIRST FLOOR
PUBLIC ENTRANCE

SCALE: 1" = 30'-0"

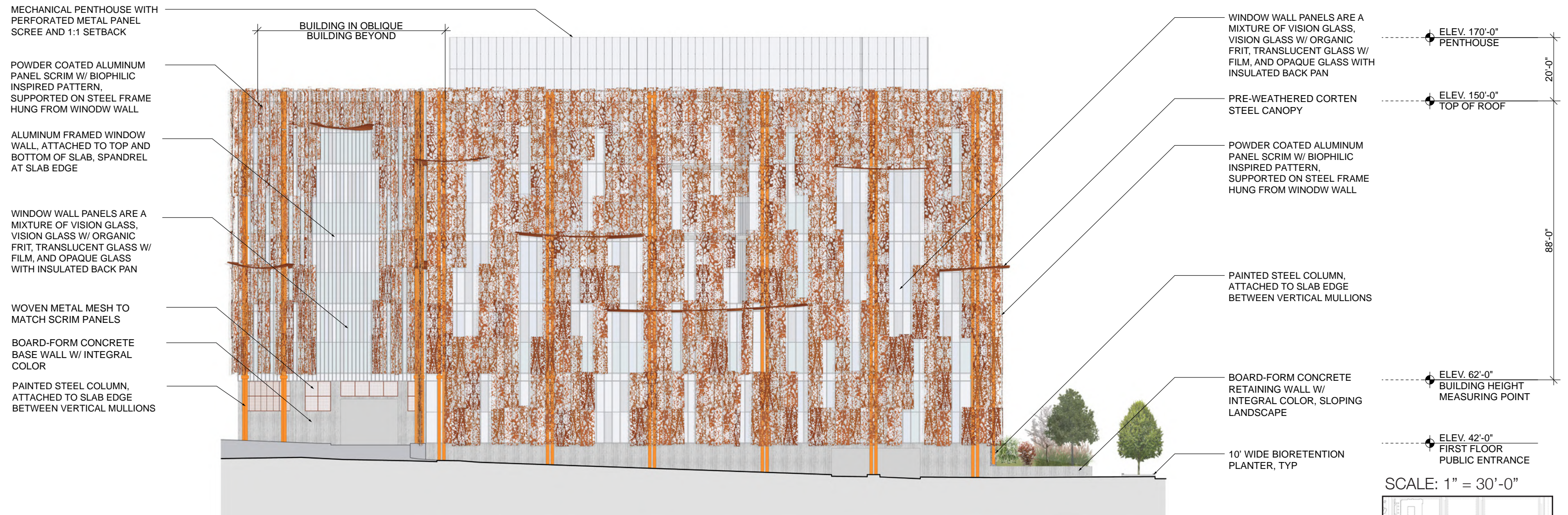


* FLEXIBILITY IS REQUESTED TO VARY THE FINAL SELECTION OF THE EXTERIOR
MATERIALS WITHIN THE COLOR RANGES AND MATERIAL TYPES AS PROPOSED
WITHOUT REDUCING THE QUALITY OF THE MATERIALS AND TO MAKE MINOR
REFINEMENTS TO EXTERIOR DETAILS AND DIMENSIONS.

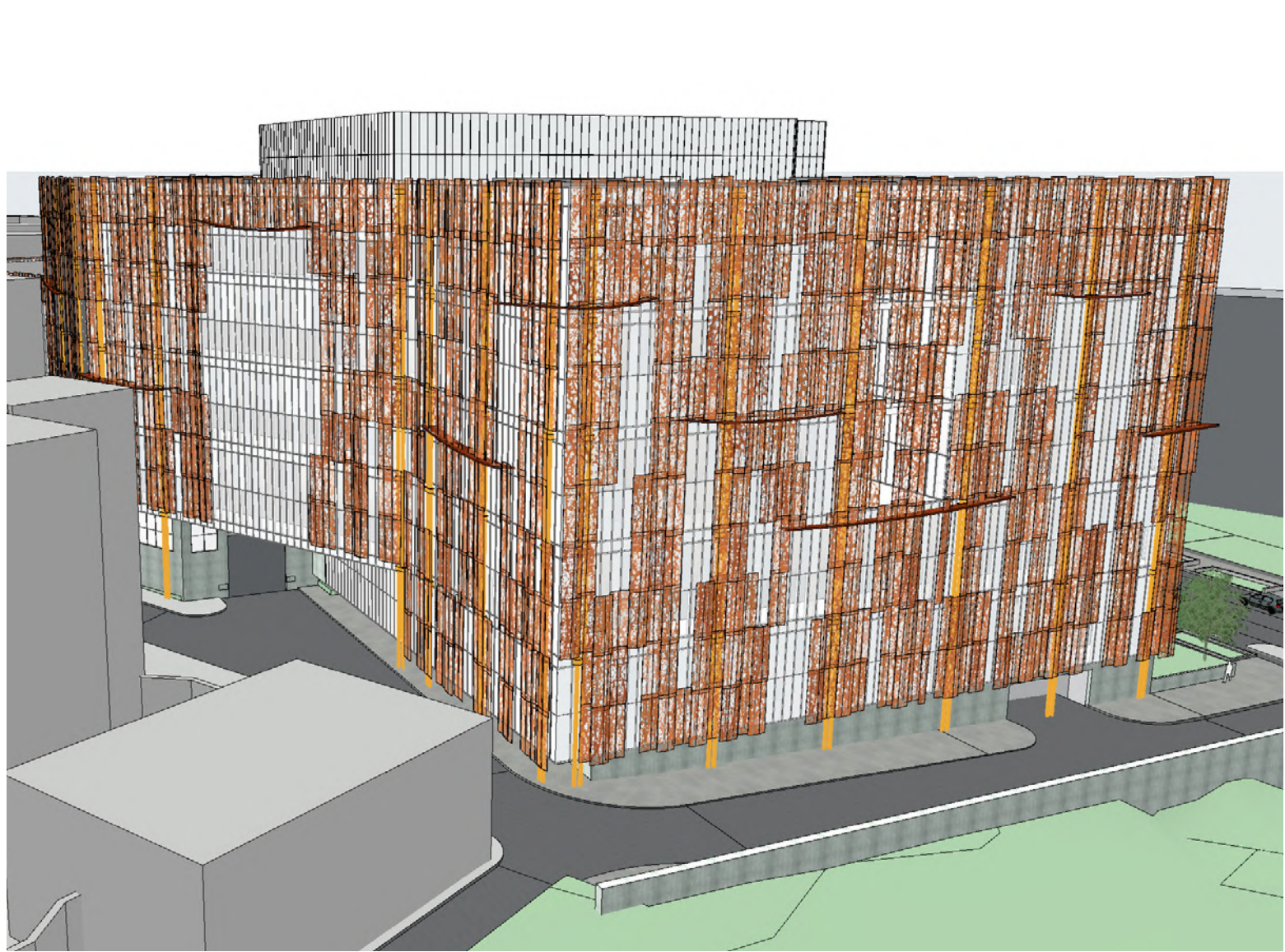
BUILDING 1 | SOUTH ELEVATION
ZONING COMMISSION | DESIGN REVIEW
D.C. CORRECTIONAL TREATMENT FACILITY ANNEX

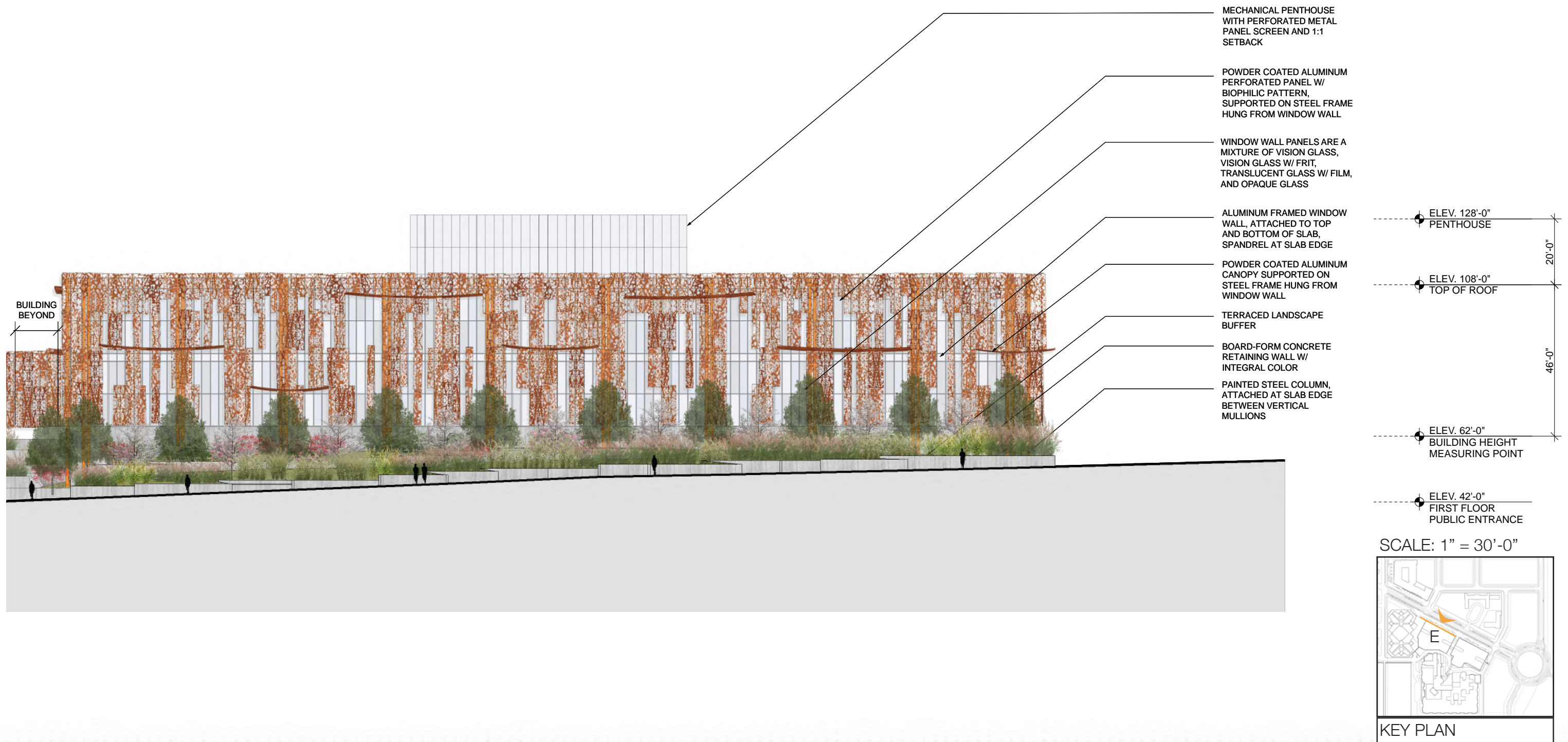
D.C. Department of Corrections | of General Services
CGL Companies | CORE architecture + design
Cozen O' Connor | Wiles Mensch | Gorove Slade

ZONING COMMISSION
District of Columbia
CASE NO. 24-21
EXHIBIT NO. 10A0



* FLEXIBILITY IS REQUESTED TO VARY THE FINAL SELECTION OF THE EXTERIOR MATERIALS WITHIN THE COLOR RANGES AND MATERIAL TYPES AS PROPOSED WITHOUT REDUCING THE QUALITY OF THE MATERIALS AND TO MAKE MINOR REFINEMENTS TO EXTERIOR DETAILS AND DIMENSIONS.





* FLEXIBILITY IS REQUESTED TO VARY THE FINAL SELECTION OF THE EXTERIOR MATERIALS WITHIN THE COLOR RANGES AND MATERIAL TYPES AS PROPOSED WITHOUT REDUCING THE QUALITY OF THE MATERIALS AND TO MAKE MINOR REFINEMENTS TO EXTERIOR DETAILS AND DIMENSIONS.

MECHANICAL PENTHOUSE WITH
PERFORATED METAL
PANEL SCREENING AND 1:1
SETBACK

PRE-WEATHERED CORTEN
STEEL CANOPY

WINDOW WALL PANELS ARE A
MIXTURE OF VISION GLASS,
VISION GLASS W/ ORGANIC
FRIT, TRANSLUCENT GLASS
W/ FILM, AND OPAQUE GLASS
WITH INSULATED BACK PAN

POWDER COATED ALUMINUM
PANEL SCRIM W/ BIOPHILIC
INSPIRED PATTERN,
SUPPORTED ON STEEL FRAME
HUNG FROM WINDOW WALL

ALUMINUM FRAMED WINDOW
WALL, ATTACHED TO TOP AND
BOTTOM OF SLAB, SPANDREL
AT SLAB EDGE

PAINTED STEEL COLUMN,
ATTACHED TO SLAB EDGE
BETWEEN VERTICAL MULLIONS

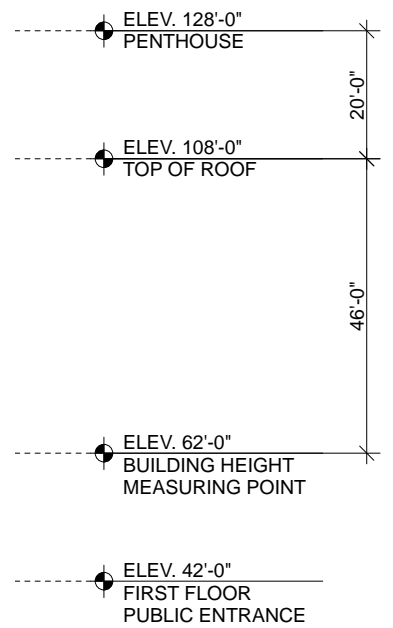
TERRACED LANDSCAPE BUFFER

BOARD-FORM CONCRETE
RETAINING WALL W/ INTEGRAL
COLOR

10' WIDE BIORETENTION
PLANTER, TYP



BUILDING IN OBLIQUE



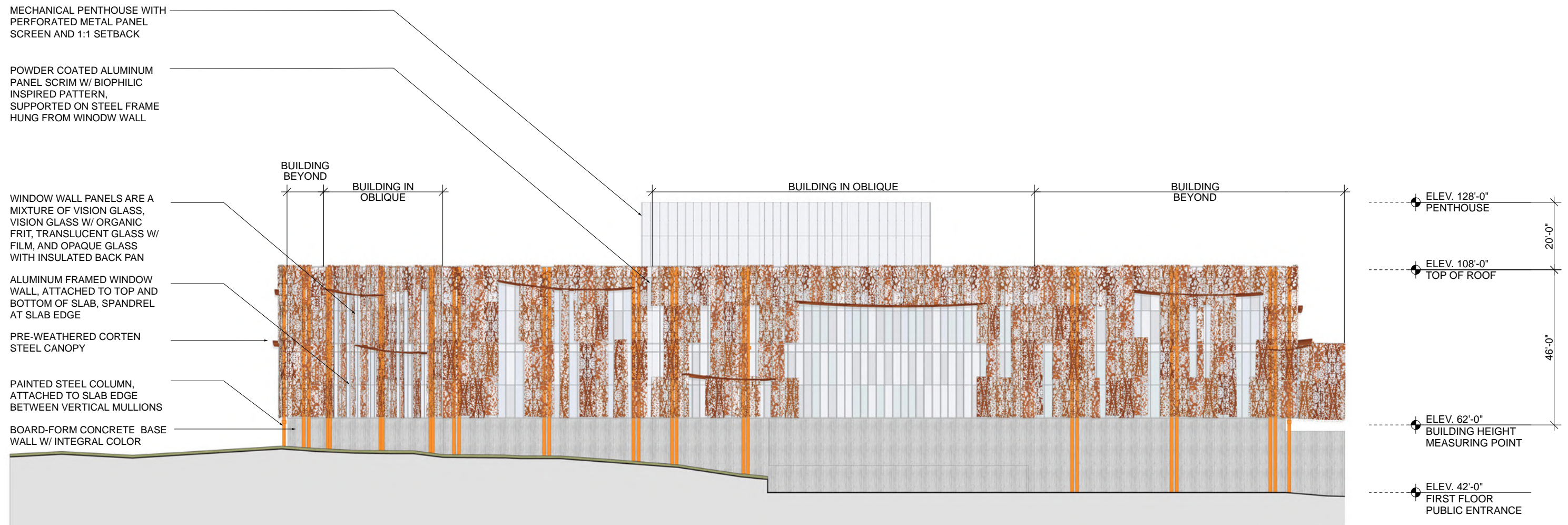
SCALE: 1" = 30'-0"



* FLEXIBILITY IS REQUESTED TO VARY THE FINAL SELECTION OF THE EXTERIOR MATERIALS WITHIN THE COLOR RANGES AND MATERIAL TYPES AS PROPOSED WITHOUT REDUCING THE QUALITY OF THE MATERIALS AND TO MAKE MINOR REFINEMENTS TO EXTERIOR DETAILS AND DIMENSIONS.

BUILDING 2 | WEST ELEVATION
ZONING COMMISSION | DESIGN REVIEW
D.C. CORRECTIONAL TREATMENT FACILITY ANNEX

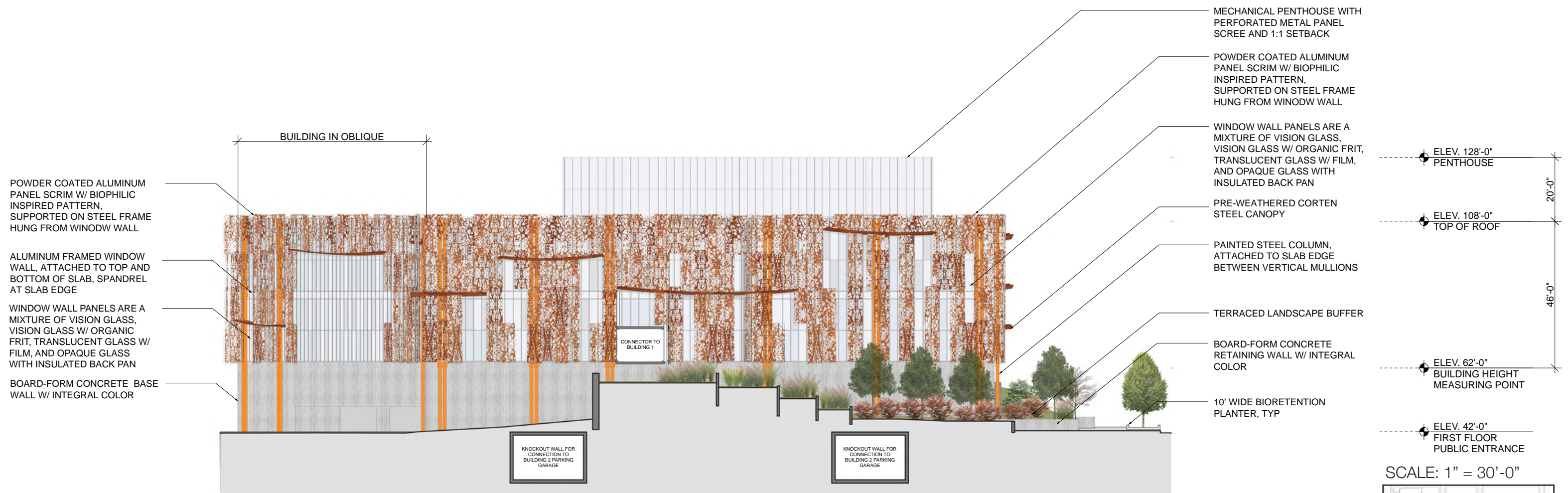
D.C. Department of Corrections | of General Services
CGL Companies | CORE architecture + design
Cozen O' Connor | Wiles Mensch | Gorove Slade



* FLEXIBILITY IS REQUESTED TO VARY THE FINAL SELECTION OF THE EXTERIOR MATERIALS WITHIN THE COLOR RANGES AND MATERIAL TYPES AS PROPOSED WITHOUT REDUCING THE QUALITY OF THE MATERIALS AND TO MAKE MINOR REFINEMENTS TO EXTERIOR DETAILS AND DIMENSIONS.

BUILDING 2 | SOUTH ELEVATION
 ZONING COMMISSION | DESIGN REVIEW
 D.C. CORRECTIONAL TREATMENT FACILITY ANNEX

D.C. Department of Corrections | of General Services
 CGL Companies | CORE architecture + design
 Cozen O' Connor | Wiles Mensch | Gorove Slade

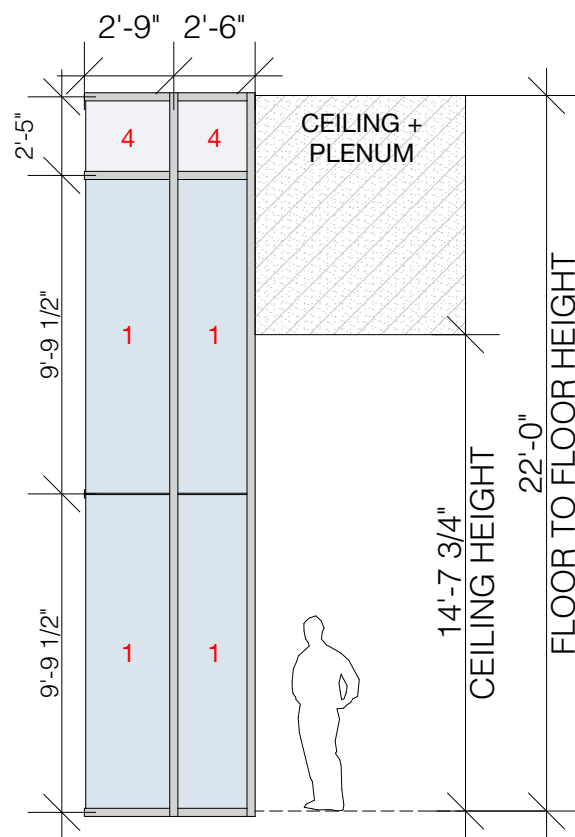


* FLEXIBILITY IS REQUESTED TO VARY THE FINAL SELECTION OF THE EXTERIOR MATERIALS WITHIN THE COLOR RANGES AND MATERIAL TYPES AS PROPOSED WITHOUT REDUCING THE QUALITY OF THE MATERIALS AND TO MAKE MINOR REFINEMENTS TO EXTERIOR DETAILS AND DIMENSIONS.

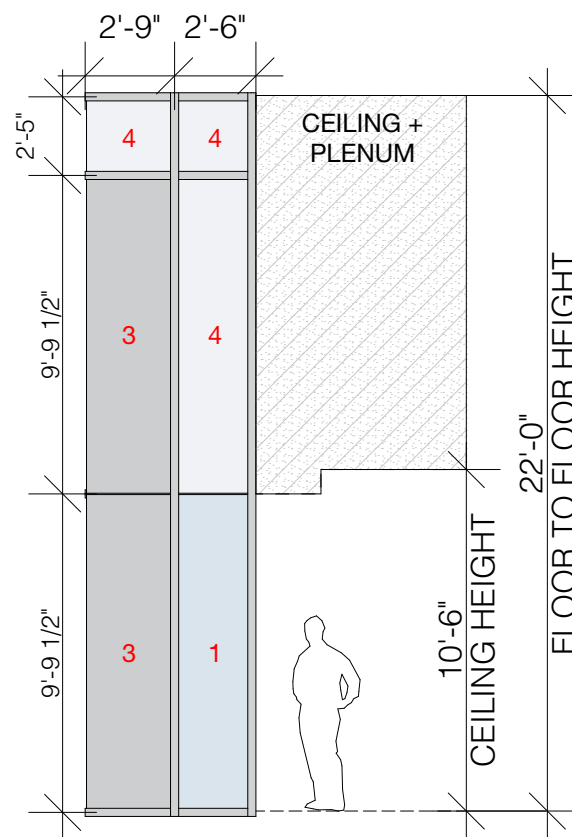
BUILDING 2 | EAST ELEVATION
 ZONING COMMISSION | DESIGN REVIEW
 D.C. CORRECTIONAL TREATMENT FACILITY ANNEX

D.C. Department of Corrections | of General Services
 CGL Companies | CORE architecture + design
 Cozen O' Connor | Wiles Mensch | Gorove Slade

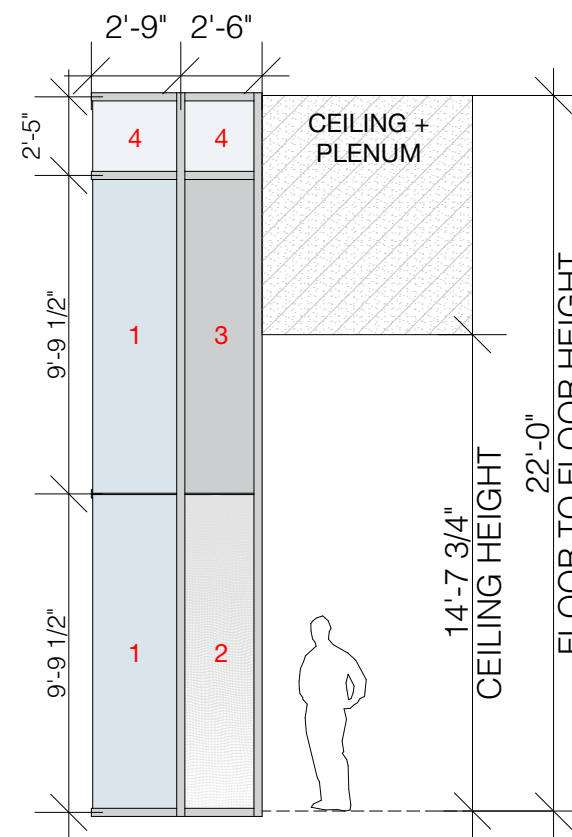




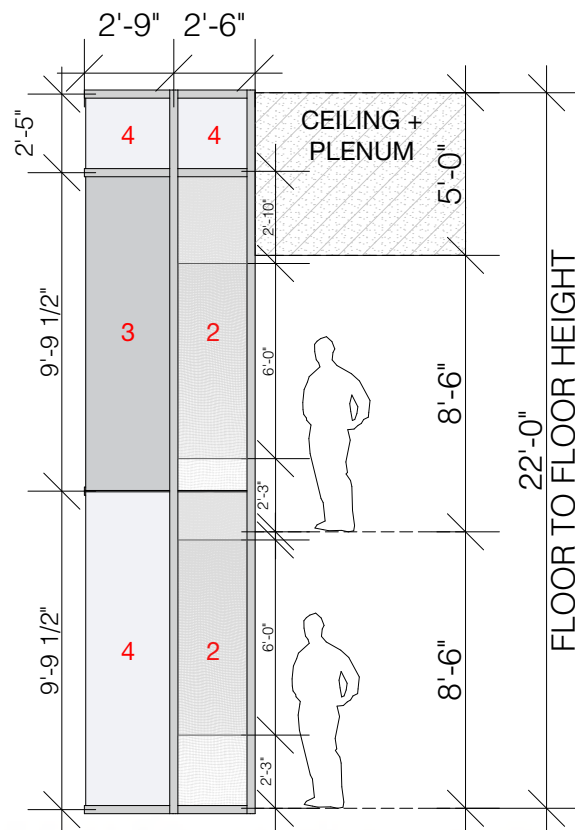
WINDOW WALL AT LOBBY



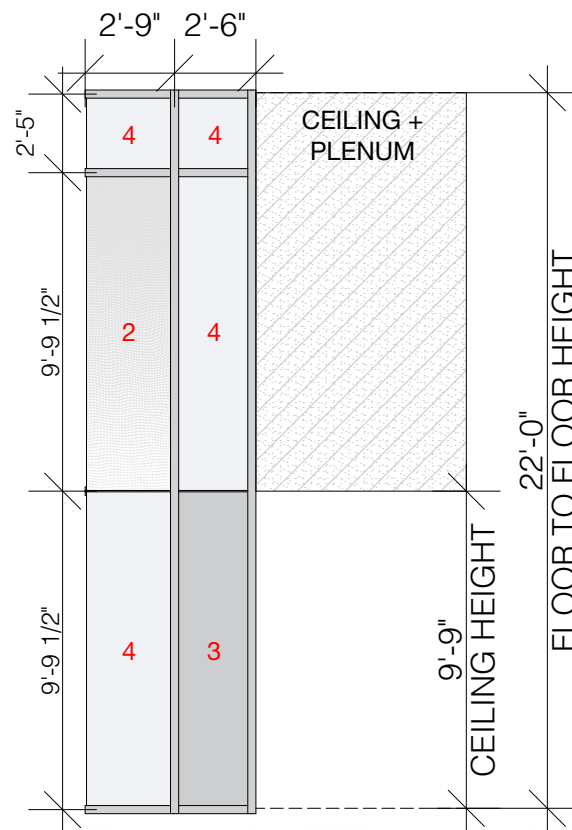
WINDOW WALL AT ADMIN OFFICES



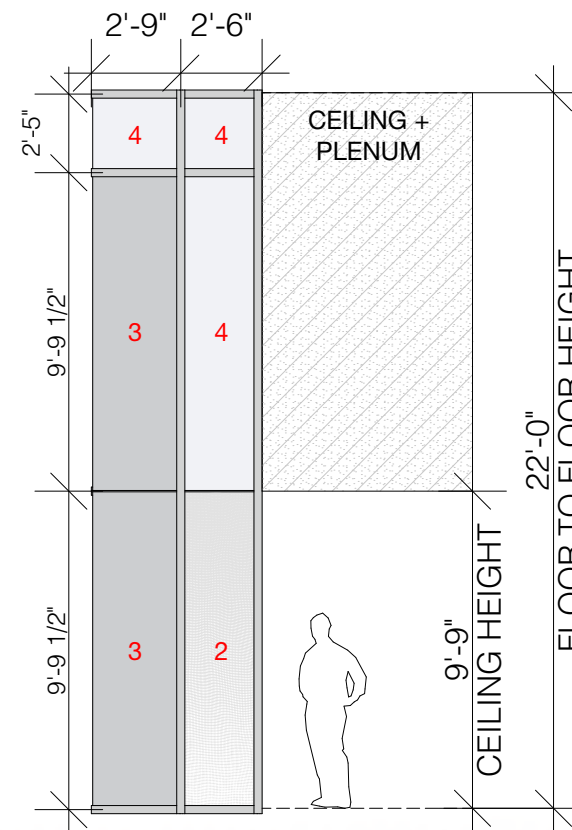
WINDOW WALL AT MEETING SPACES



WINDOW WALL AT HOUSING UNITS



WINDOW WALL AT SECURE HALLWAYS



WINDOW WALL AT RESIDENT COMMONS

FACADE PANEL TYPES:



PANEL 1 - VISION GLAZING

USED ACROSS ENTIRETY OF LOBBY, PATTERNED ACROSS FACADE AT ADMINISTRATIVE AREAS, LOWER PANEL ONLY



PANEL 2 - FRIT - WHITE ORGANIC

GLASS PANEL WITH WHITE FRIT, USED IN FRONT OF ALL CELL WINDOWS AND PATTERNED ACROSS REMAINING FACADE FOR VISUAL CONTINUITY AND LIGHT CONTROL



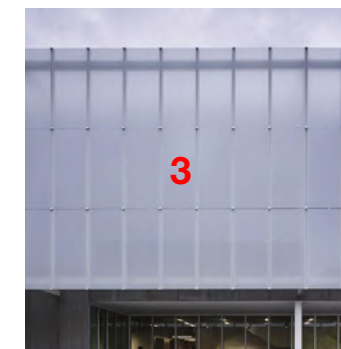
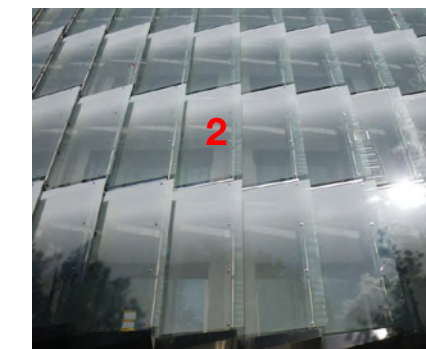
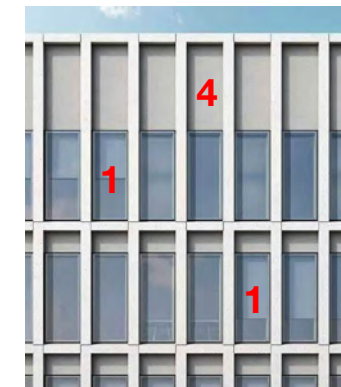
PANEL 3 - TRANSLUCENT GLAZING - GREY FILM

GLASS PANEL WITH CONTINUOUS FILM, PATTERNED ACROSS FACADE FOR VISUAL CONTINUITY AND LIGHT CONTROL - OFFICES, ADMIN, CLINIC ECT - USED IN FRONT OF HOUSING UNITS WITHOUT A WINDOW



PANEL 4 - OPAQUE PANEL

BACK-PAINTED GLASS, SPANDREL USED AT FLOOR LEVELS AND COLUMNS, PATTERNED ACROSS REMAINING FACADE FOR VISUAL CONTINUITY AND LIGHT CONTROL



WINDOW WALL PANEL TYPES

WINDOW WALL PROGRAM RELATIONSHIPS

ZONING COMMISSION | DESIGN REVIEW

D.C. CORRECTIONAL TREATMENT FACILITY ANNEX

D.C. Department of Corrections | of General Services

CGL Companies | CORE architecture + design

Cozen O' Connor | Wiles Mensch | Gorove Slade

A large glass facade reflecting a dense forest of tall, thin trees, likely bamboo, under a bright sky. The reflection is clear and detailed, showing the intricate patterns of the foliage and the vertical lines of the trunks. The sky is a pale, hazy blue. The reflection is seen through a grid of dark window frames. Below the main reflection, a smaller, darker section of the glass shows a reflection of the building's interior or a different part of the surrounding environment.

Architectural section drawing of a building facade. The drawing shows a double-height space with two human figures for scale. The dimensions are as follows:

- Overall height: 22'-0" (FLOOR TO FLOOR HEIGHT)
- Height of the upper section: 9'-9 1/2"
- Height of the lower section: 9'-9 1/2"
- Height of the ceiling plenum: 5'-0"
- Height of the upper section (excluding ceiling plenum): 8'-6"
- Height of the lower section (excluding ceiling plenum): 8'-6"
- Width of the upper section: 2'-9"
- Width of the lower section: 2'-6"
- Width of the ceiling plenum: 2'-10"
- Width of the upper section (excluding ceiling plenum): 6'-0"
- Width of the lower section (excluding ceiling plenum): 6'-0"
- Width of the ceiling plenum (excluding upper section): 2'-3"
- Width of the ceiling plenum (excluding lower section): 2'-3"

The drawing is divided into four main sections, labeled with red numbers:

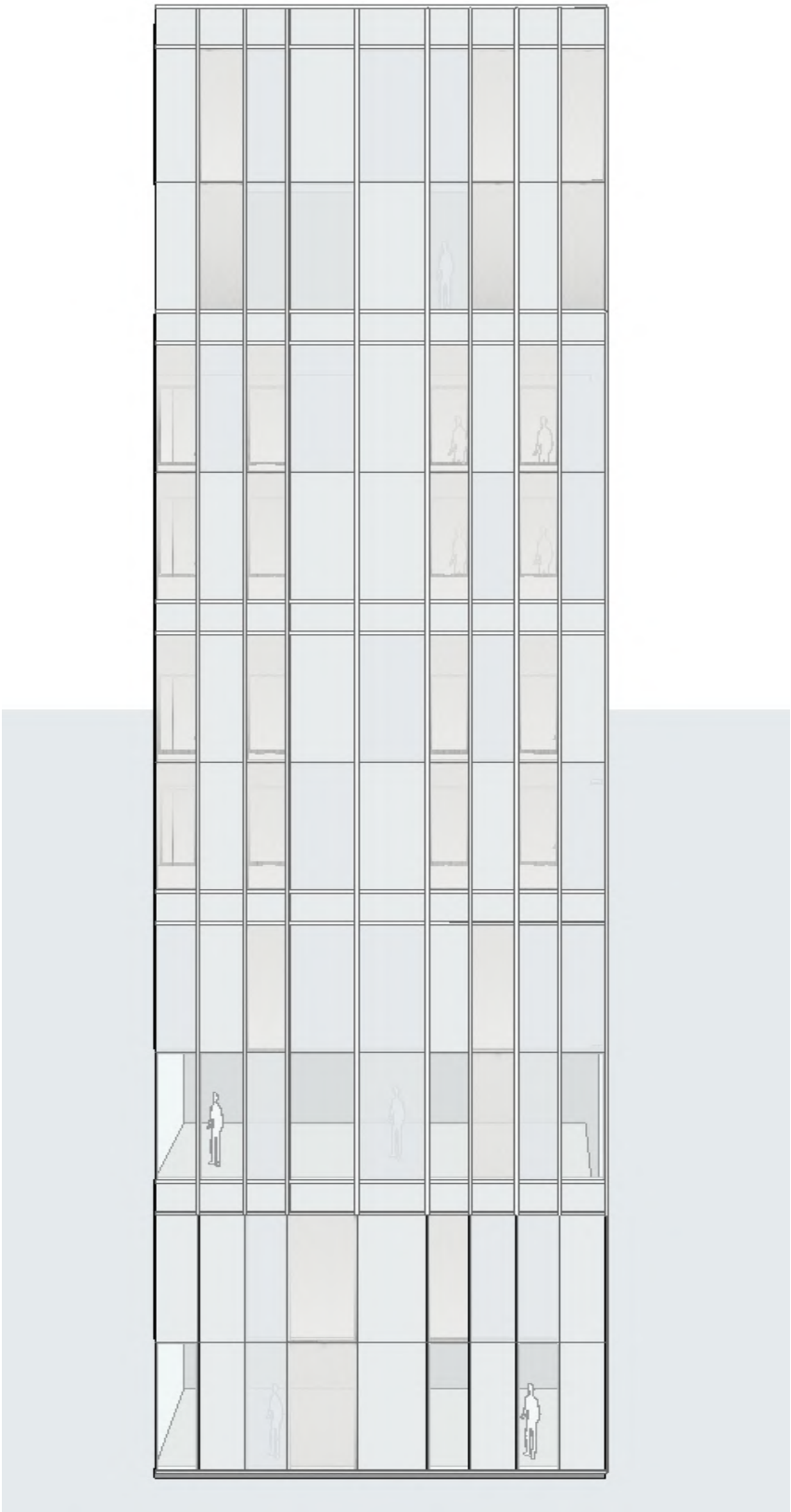
- Section 1: The upper section, labeled "1" in red.
- Section 2: The lower section, labeled "2" in red.
- Section 3: The ceiling plenum, labeled "3" in red.
- Section 4: The ceiling plenum, labeled "4" in red.

The ceiling plenum is labeled "CEILING + PLENUM" in black text. The overall height is labeled "22'-0" FLOOR TO FLOOR HEIGHT" in black text. The dimensions are labeled in black text.

22'-0"
FLOOR TO FLOOR HEIGHT



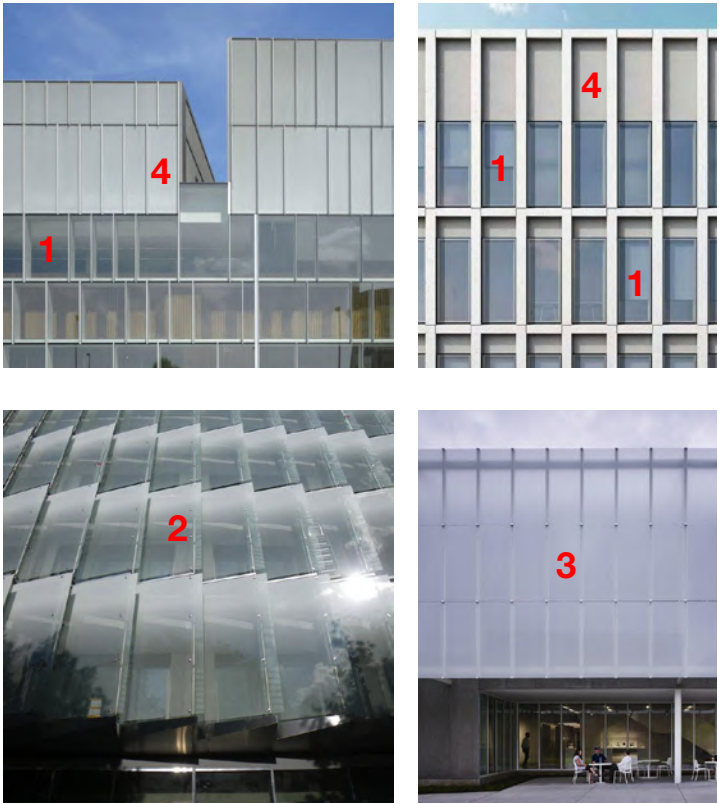
57



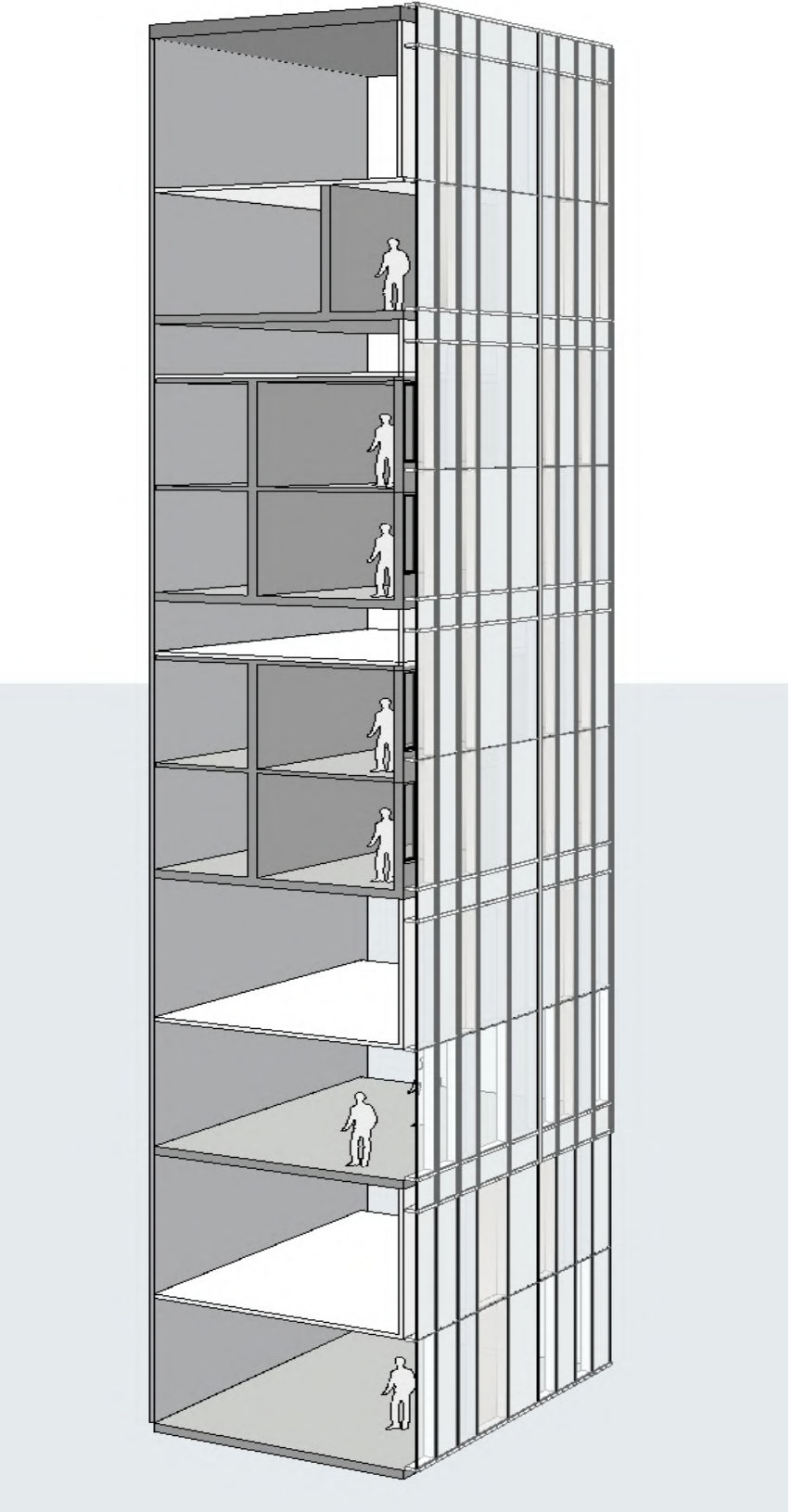
WINDOW WALL ELEVATION STUDY

FACADE PANEL TYPES:

- PANEL 1 - VISION GLAZING**
USED ACROSS ENTIRETY OF LOBBY, PATTERNED ACROSS FACADE AT ADMINISTRATIVE AREAS, LOWER PANEL ONLY
- PANEL 2 - FRIT - WHITE ORGANIC**
GLASS PANEL WITH WHITE FRIT, USED IN FRONT OF ALL CELL WINDOWS AND PATTERNED ACROSS REMAINING FACADE FOR VISUAL CONTINUITY AND LIGHT CONTROL
- PANEL 3 - TRANSLUCENT GLAZING - GREY FILM**
GLASS PANEL WITH CONTINUOUS FILM, PATTERNED ACROSS FACADE FOR VISUAL CONTINUITY AND LIGHT CONTROL - OFFICES, ADMIN, CLINIC ECT - USED IN FRONT OF HOUSING UNITS WITHOUT A WINDOW
- PANEL 4 - OPAQUE PANEL**
BACK-PAINTED GLASS, SPANDREL USED AT FLOOR LEVELS AND COLUMNS, PATTERNED ACROSS REMAINING FACADE FOR VISUAL CONTINUITY AND LIGHT CONTROL



WINDOW WALL PANEL MATERIALITY



WINDOW WALL DIMENSIONAL SECTION STUDY