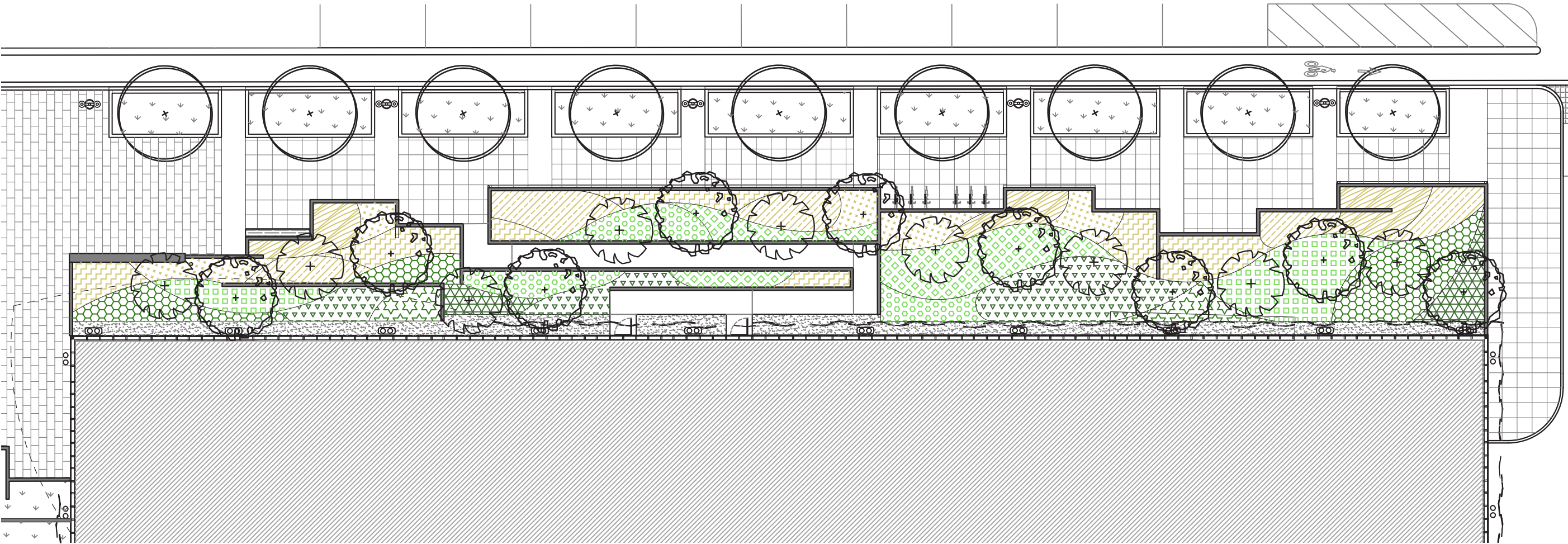






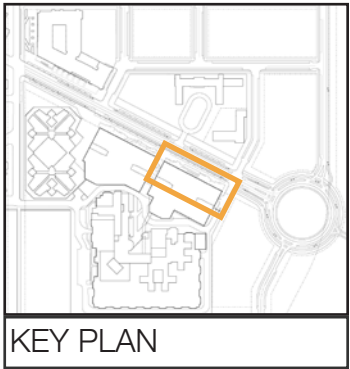


MASSACHUSETTS AVE, N.E.



	LITTLELEAF LINDEN		BLUE GRAMA		OAKLEAF HYDRANGEA
	RIVER BIRCH		SWITCHGRASS		MERLOT VIRGINIA SWEETSPIRE
	ALLEGHENY SERVICEBERRY		NORTHERN SEA OATS		SKIP CHERRY LAUREL
			FEATHER REED GRASS		HEAVENLY BAMBOO
			GUMPO PINK AZALEA		GREEN MOUNTAIN BOXWOOD
			WINTERBERRY		DOUBLEFILE VIBURNUM







*Tilia cordata*  
LITTLELEAF LINDEN



*Betula nigra*  
RIVER BIRCH



*Platanus x acerfolia*  
LONDON PLANE TREE



*Amelanchier laevis*  
ALLEGHENY SERVICEBERRY



*Magnolia stellata*  
STAR MAGNOLIA



*Cornus florida 'Cherokee Princess'*  
FLOWERING DOGWOOD



SHRUBS



*Azalea x 'Gumpo Pink'*  
GUMPO PINK AZALEA



*Buxus microphylla 'Green Mountain'*  
GREEN MOUNTAIN BOXWOOD



*Hydrangea quercifolia 'Snow Queen'*  
OAKLEAF HYDRANGEA



*Ilex verticillata*  
WINTERBERRY



*Itea virginica 'Merlot'*  
MERLOT VIRGINIA SWEETSPIRE



*Nandina domestica 'Gulfstream'*  
HEAVENLY BAMBOO



*Prunus laurocerasus 'Schipkaensis'*  
SKIP CHERRY LAUREL



*Viburnum plicatum f. tomentosum 'Mariesii'*  
DOUBLEFILE VIBURNUM

GRASSES



*Panicum virgatum 'Northwind'*  
SWITCHGRASS



*Chasmanthium latifolium*  
NORTHERN SEA OATS



*Calamagrostis x acutiflora 'Karl Forster'*  
FEATHER REED GRASS



*Bouteloua gracilis 'Blonde Ambition'*  
BLUE GRAMA





**RENDERING | LOBBY VIEW**  
ZONING COMMISSION | DESIGN REVIEW  
D.C. CORRECTIONAL TREATMENT FACILITY ANNEX

D.C. Department of Corrections | of General Services  
CGL Companies | CORE architecture + design  
Cozen O’ Connor | Wiles Mensch | Gorove Slade

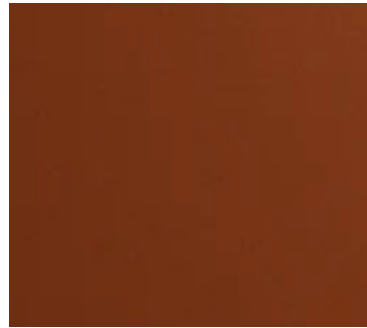




LAVA ROCK  
FACADE LEAVES



RAL 8001 - OCHER BROWN  
SCRIM PANEL A



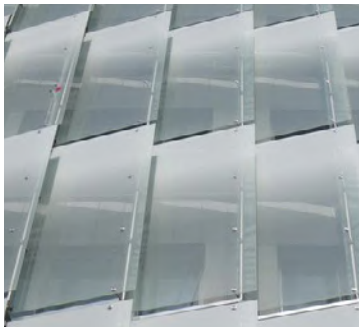
RAL 8003 - CLAY BROWN  
SCRIM PANEL B



CANYON SPARKLE  
SCRIM PANEL C



PANEL 4 - OPAQUE PANEL  
WINDOW WALL GLAZING



PANEL 2 - FRIT  
WINDOW WALL GLAZING



PANEL 3 - TRANSLUCENT WITH FILM  
WINDOW WALL GLAZING



PANEL 1 - VISION GLASS  
WINDOW WALL GLAZING



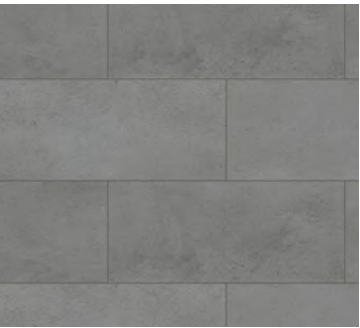
METAL PANEL RAL 7047 - TELEGRAY 4  
MECHANICAL PENTHOUSE SCREEN



RAL 1017 SAFFRON YELLOW  
PAINTED STEEL COLUMNS



BOARD FORMED CONCRETE  
BASE AND RETAINING WALLS



CONCRETE SIDEWALK SCORE PATTERN  
CENTER PLAZA AT LOBBY

\* FLEXIBILITY IS REQUESTED TO VARY THE FINAL SELECTION OF THE EXTERIOR MATERIALS WITHIN THE COLOR RANGES AND MATERIAL TYPES AS PROPOSED WITHOUT REDUCING THE QUALITY OF THE MATERIALS AND TO MAKE MINOR REFINEMENTS TO EXTERIOR DETAILS AND DIMENSIONS.





KEY PLAN

**RENDERING | BUILDING 1 VIEW**  
ZONING COMMISSION | DESIGN REVIEW  
D.C. CORRECTIONAL TREATMENT FACILITY ANNEX

D.C. Department of Corrections | of General Services  
CGL Companies | CORE architecture + design  
Cozen O' Connor | Wiles Mensch | Gorove Slade





KEY PLAN

**RENDERING | BUILDING 1 VIEW**  
ZONING COMMISSION | DESIGN REVIEW  
D.C. CORRECTIONAL TREATMENT FACILITY ANNEX

D.C. Department of Corrections | of General Services  
CGL Companies | CORE architecture + design  
Cozen O' Connor | Wiles Mensch | Gorove Slade



MECHANICAL PENTHOUSE WITH PERFORATED METAL PANEL SCREEN AND 1:1 SETBACK

WINDOW WALL PANELS ARE A MIXTURE OF VISION GLASS, VISION GLASS W/ FRIT, TRANSLUCENT GLASS W/ FILM, AND OPAQUE GLASS

ALUMINUM FRAMED WINDOW WALL, ATTACHED TO TOP AND BOTTOM OF SLAB, SPANDREL AT SLAB EDGE

POWDER COATED ALUMINUM CANOPY SUPPORTED ON STEEL FRAME HUNG FROM WINDOW WALL

POWDER COATED ALUMINUM PERFORATED PANEL W/ BIOPHILIC PATTERN, SUPPORTED ON STEEL FRAME HUNG FROM WINDOW WALL

BOARD-FORM CONCRETE RETAINING WALL W/ INTEGRAL COLOR

PAINTED STEEL COLUMN, ATTACHED AT SLAB EDGE BETWEEN VERTICAL MULLIONS

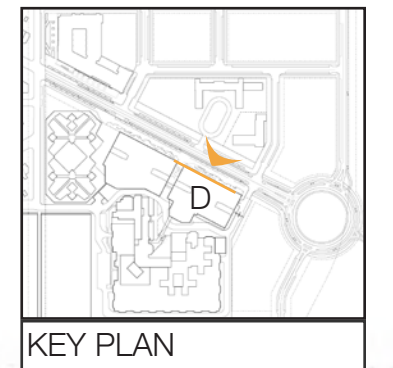
ELEV. 170'-0"  
PENTHOUSE

ELEV. 150'-0"  
TOP OF ROOF

ELEV. 62'-0"  
BUILDING HEIGHT MEASURING POINT

ELEV. 42'-0"  
FIRST FLOOR PUBLIC ENTRANCE

SCALE: 1" = 30'-0"



\* FLEXIBILITY IS REQUESTED TO VARY THE FINAL SELECTION OF THE EXTERIOR MATERIALS WITHIN THE COLOR RANGES AND MATERIAL TYPES AS PROPOSED WITHOUT REDUCING THE QUALITY OF THE MATERIALS AND TO MAKE MINOR REFINEMENTS TO EXTERIOR DETAILS AND DIMENSIONS.

**BUILDING 1 | NORTH ELEVATION**  
ZONING COMMISSION | DESIGN REVIEW  
D.C. CORRECTIONAL TREATMENT FACILITY ANNEX

D.C. Department of Corrections | of General Services  
CGL Companies | CORE architecture + design  
Cozen O' Connor | Wiles Mensch | Gorove Slade



MECHANICAL PENTHOUSE WITH PERFORATED METAL PANEL SCREEN AND 1:1 SETBACK

WINDOW WALL PANELS ARE A MIXTURE OF VISION GLASS, VISION GLASS W/ ORGANIC FRIT, TRANSLUCENT GLASS W/ FILM, AND OPAQUE GLASS WITH INSULATED BACK PAN

ALUMINUM FRAMED WINDOW WALL, ATTACHED TO TOP AND BOTTOM OF SLAB, SPANDREL AT SLAB EDGE

POWDER COATED ALUMINUM PANEL SCRIM W/ BIOPHILIC INSPIRED PATTERN, SUPPORTED ON STEEL FRAME HUNG FROM WINDOW WALL

PRE-WEATHERED CORTEN STEEL CANOPY

BUILDING SIGNAGE AND FLAG POLE

10' WIDE BIORETENTION PLANTER, TYP

BUILDING BEYOND

BUILDING IN OBLIQUE

ELEV. 170'-0"  
PENTHOUSE

ELEV. 150'-0"  
TOP OF ROOF

WINDOW WALL PANELS ARE A MIXTURE OF VISION GLASS, VISION GLASS W/ ORGANIC FRIT, TRANSLUCENT GLASS W/ FILM, AND OPAQUE GLASS WITH INSULATED BACK PAN

POWDER COATED ALUMINUM PANEL SCRIM W/ BIOPHILIC INSPIRED PATTERN, SUPPORTED ON STEEL FRAME HUNG FROM WINDOW WALL

WOVEN METAL MESH W/ COLOR TO MATCH VEIL

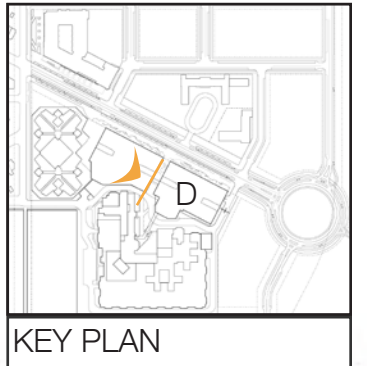
BOARD-FORM CONCRETE BASE WALL W/ INTEGRAL COLOR

PAINTED STEEL COLUMN, ATTACHED TO SLAB EDGE BETWEEN VERTICAL MULLIONS

ELEV. 62'-0"  
BUILDING HEIGHT MEASURING POINT

ELEV. 42'-0"  
FIRST FLOOR PUBLIC ENTRANCE

SCALE: 1" = 30'-0"



\* FLEXIBILITY IS REQUESTED TO VARY THE FINAL SELECTION OF THE EXTERIOR MATERIALS WITHIN THE COLOR RANGES AND MATERIAL TYPES AS PROPOSED WITHOUT REDUCING THE QUALITY OF THE MATERIALS AND TO MAKE MINOR REFINEMENTS TO EXTERIOR DETAILS AND DIMENSIONS.

## BUILDING 1 | WEST ELEVATION

ZONING COMMISSION | DESIGN REVIEW

D.C. CORRECTIONAL TREATMENT FACILITY ANNEX

D.C. Department of Corrections | of General Services

CGL Companies | CORE architecture + design

Cozen O' Connor | Wiles Mensch | Gorove Slade