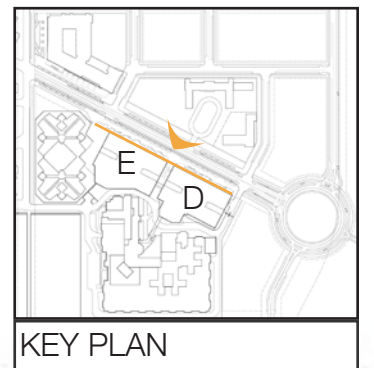




SEE INDIVIDUAL BUILDING ELEVATIONS FOR ANNOTATIONS

NOT TO SCALE



* FLEXIBILITY IS REQUESTED TO VARY THE FINAL SELECTION OF THE EXTERIOR MATERIALS WITHIN THE COLOR RANGES AND MATERIAL TYPES AS PROPOSED WITHOUT REDUCING THE QUALITY OF THE MATERIALS AND TO MAKE MINOR REFINEMENTS TO EXTERIOR DETAILS AND DIMENSIONS.

MASSACHUSETTS AVENUE SE ELEVATION

ZONING COMMISSION | DESIGN REVIEW

D.C. CORRECTIONAL TREATMENT FACILITY ANNEX

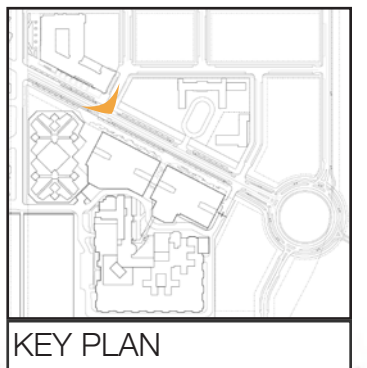
D.C. Department of Corrections | of General Services

CGL Companies | CORE architecture + design

Cozen O' Connor | Wiles Mensch | Gorove Slade

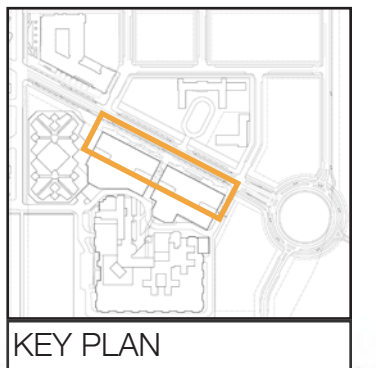
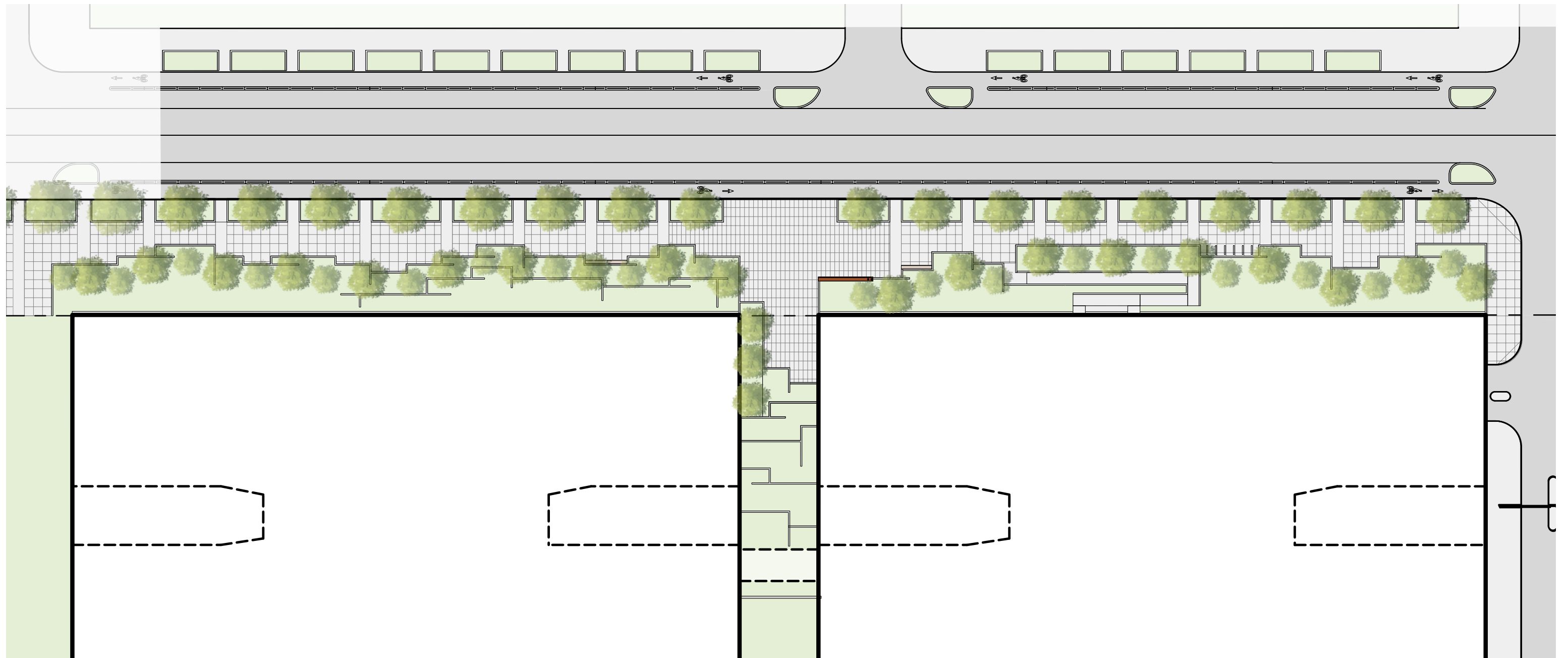
ZONING COMMISSION
District of Columbia
CASE NO. 24-21
EXHIBIT NO. 10A4

33

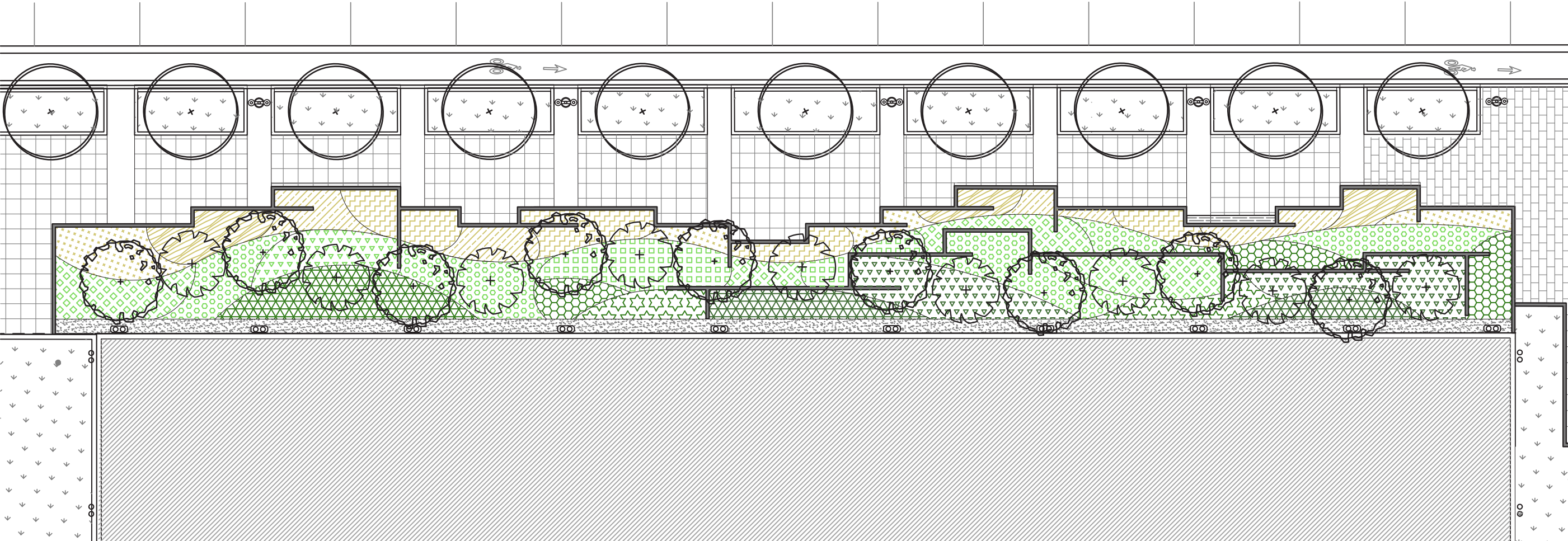








MASSACHUSETTS AVE, N.E.



	LITTLELEAF LINDEN		BLUE GRAMA		OAKLEAF HYDRANGEA
	RIVER BIRCH		SWITCHGRASS		MERLOT VIRGINIA SWEETSPIRE
	ALLEGHENY SERVICEBERRY		NORTHERN SEA OATS		SKIP CHERRY LAUREL
			FEATHER REED GRASS		HEAVENLY BAMBOO
			GUMPO PINK AZALEA		GREEN MOUNTAIN BOXWOOD
			WINTERBERRY		DOUBLEFILE VIBURNUM

