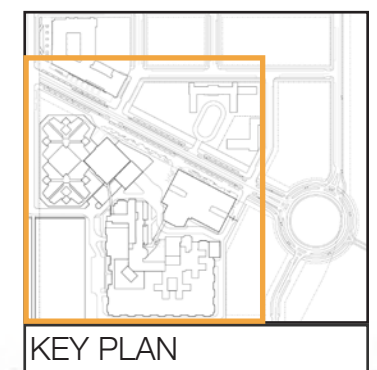


KEY

- A. Existing Correctional Treatment Facility (CTF)
- B. Existing Central Detention Facility (CDF) (to be discontinued from use in separate scope)
- C. Existing Portion of CDF to be Demolished
- D. New Building 1

- Secure Perimeter
- Site Control
- Public Entrance
- Staff Entrance
- Service Access



CONSTRUCTION SEQUENCE 1 | CONTROL FEATURES

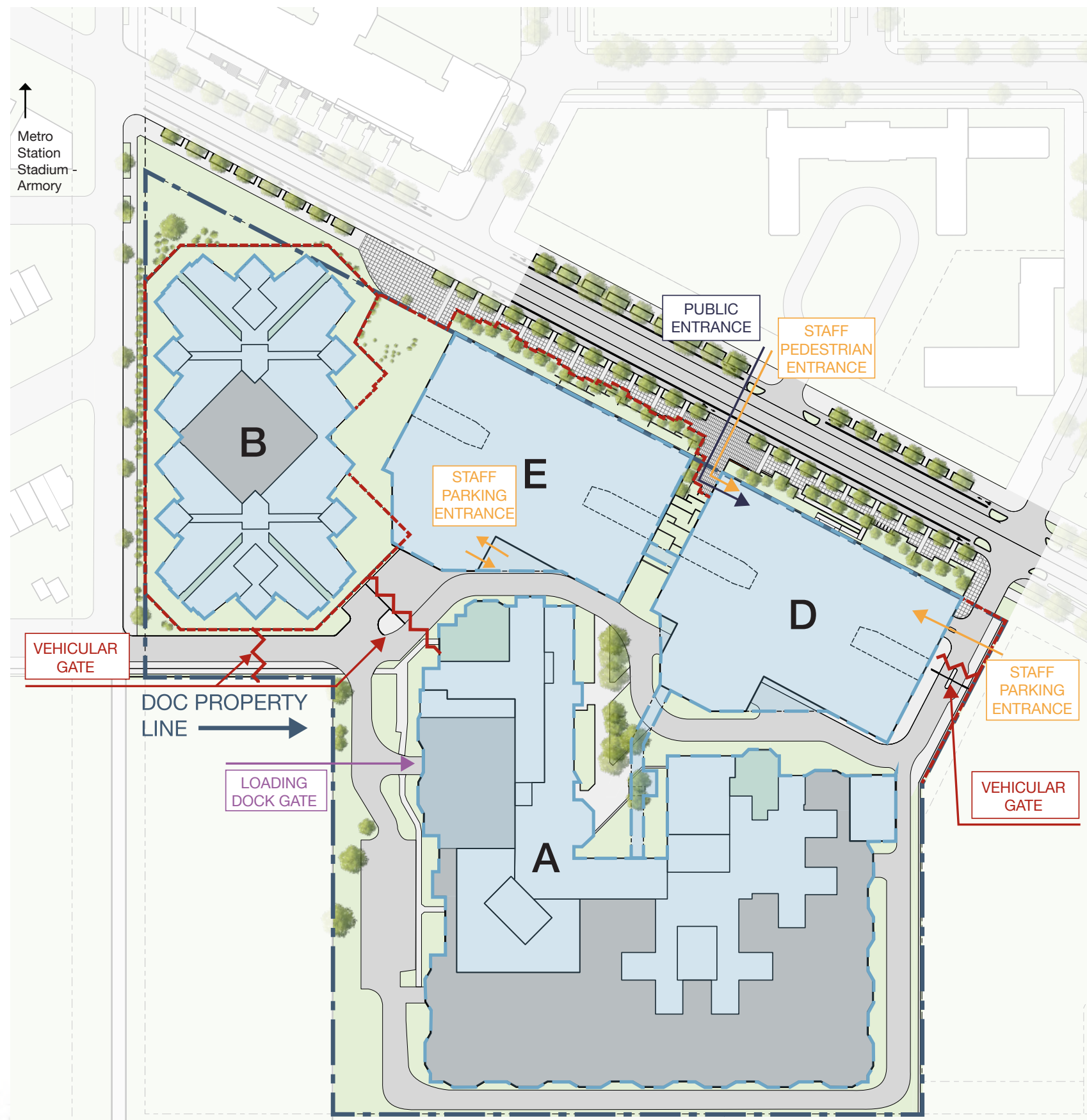
ZONING COMMISSION | DESIGN REVIEW

D.C. CORRECTIONAL TREATMENT FACILITY ANNEX

D.C. Department of Corrections | of General Services

CGL Companies | CORE architecture + design

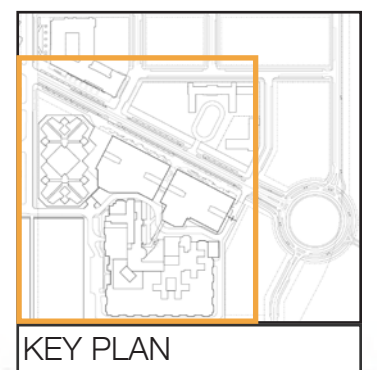
Cozen O' Connor | Wiles Mensch | Gorove Slade



KEY

- A. Existing Correctional Treatment Facility (CTF)
- B. Existing Central Detention Facility (CDF) (to be discontinued from use in separate scope)
- C. (Not Pictured - Previously Demolished)
- D. New Building 1
- E. New Building 2

- Secure Perimeter
- Site Control
- Public Entrance
- Staff Entrance
- Service Access



CONSTRUCTION SEQUENCE 2 | CONTROL FEATURES

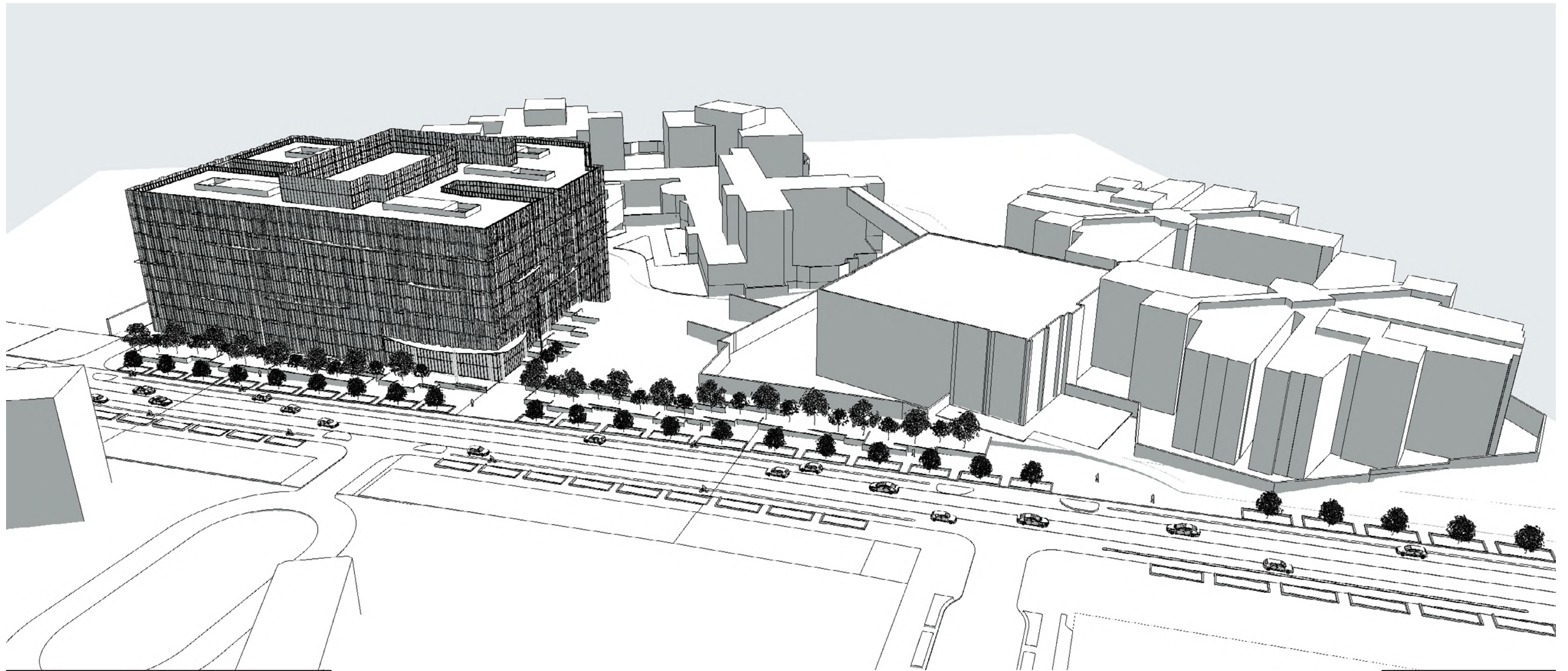
ZONING COMMISSION | DESIGN REVIEW

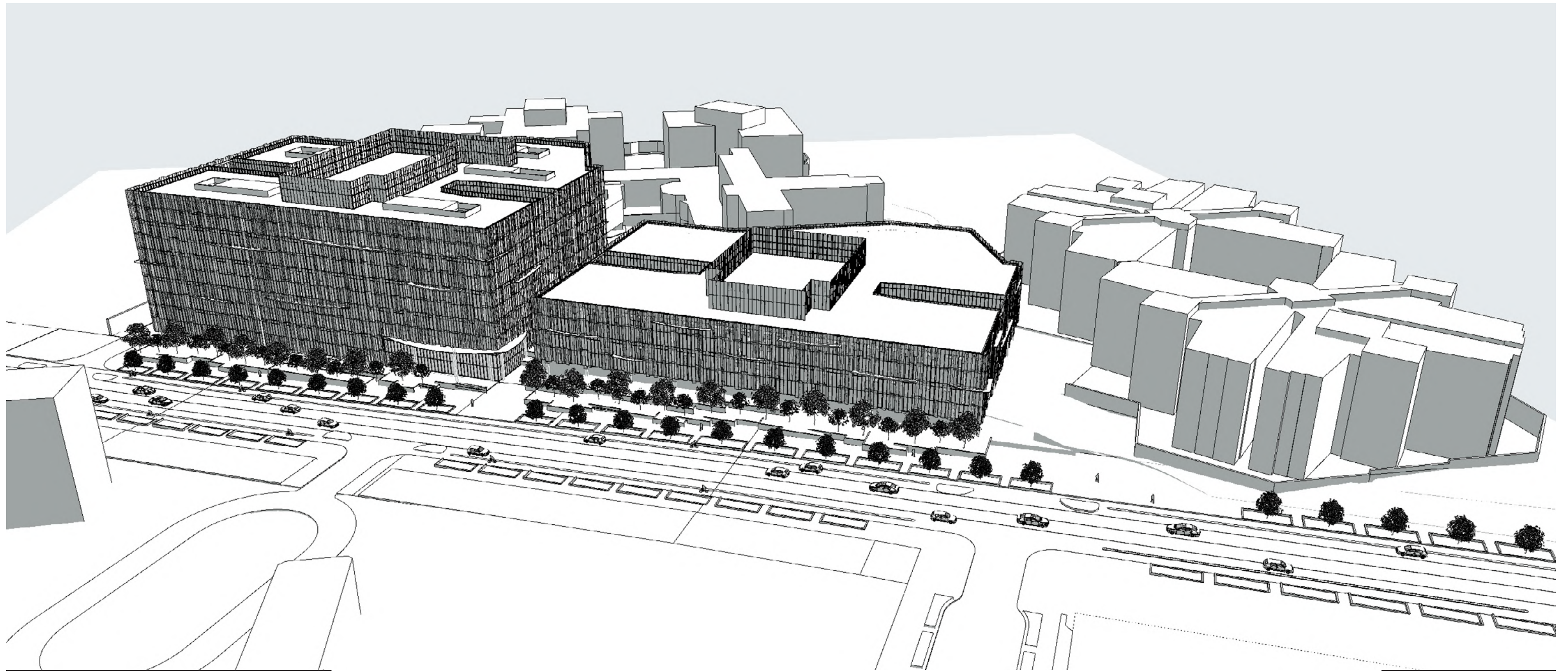
D.C. CORRECTIONAL TREATMENT FACILITY ANNEX

D.C. Department of Corrections | of General Services

CGL Companies | CORE architecture + design

Cozen O' Connor | Wiles Mensch | Gorove Slade





The mission of the DC Correctional Treatment Facility Annex is to replace the aging Central Detention Facility with a modern, secure, and resilient facility that has the necessary infrastructure to address the critical rehabilitation, treatment, and reentry needs of individuals in the custody and care of the Department of Corrections (DOC).

The interior facility program components resulted from a rigorous programming process, including feedback sessions, review of best practices and examples, and scientific analysis of the future DOC resident population.

The conceptual design of this facility responds to the programmatic and operational needs of DOC residents and staff, site constraints of the selected location, and long-term fiscal opportunities. In addition, the building envelope is responsive to the program layouts inside.

Guiding Principles for this project include:

- A singular complex operation (rather than a campus of independent structures)
- Safety for all – DOC residents and staff and visitors
- Integration into the surrounding neighborhood and embracing the Massachusetts Ave. street frontage
- Flexibility and efficient use of space
- DOC resident rehabilitation and preparation for reentry
- Community building amongst DOC residents
- Innovation and technology-forward

The resultant conceptual design represents a welcoming, yet secure correctional facility that does not bear the appearance of a traditional correctional facility and supports the vision of Hill East.

PROJECT GOALS

ZONING COMMISSION | DESIGN REVIEW

D.C. CORRECTIONAL TREATMENT FACILITY ANNEX

D.C. Department of Corrections | of General Services

CGL Companies | CORE architecture + design

Cozen O' Connor | Wiles Mensch | Gorove Slade

BUILDING 1

Housing Units
Public Lobby
Medical Clinic & Infirmary
Intake, Transfer, & Release
Behavioral Health Facilities
Administrative Offices
Educational Programs
Visitation
Staff Parking

BUILDING 2

Housing Units
Educational Programs
Administrative Offices
Staff Parking

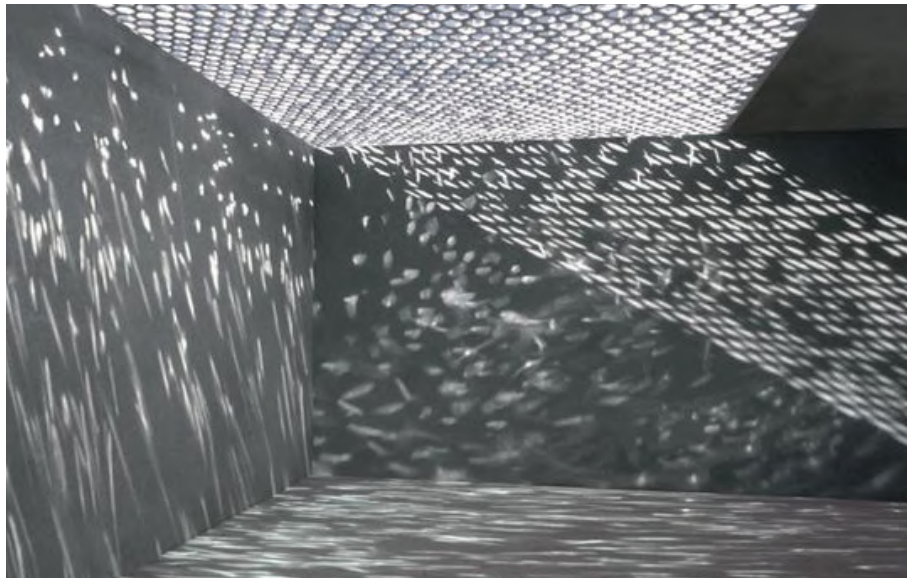
* DUE TO THE SENSITIVE NATURE AND SECURITY REQUIREMENTS OF THE PROJECT, ADDITIONAL INFORMATION REGARDING THE PROGRAM NEEDS AND LOCATION OF PROGRAMMATIC ELEMENTS WILL NOT BE DISCLOSED IN ARCHITECTURAL DRAWING AVAILABLE TO THE PUBLIC.



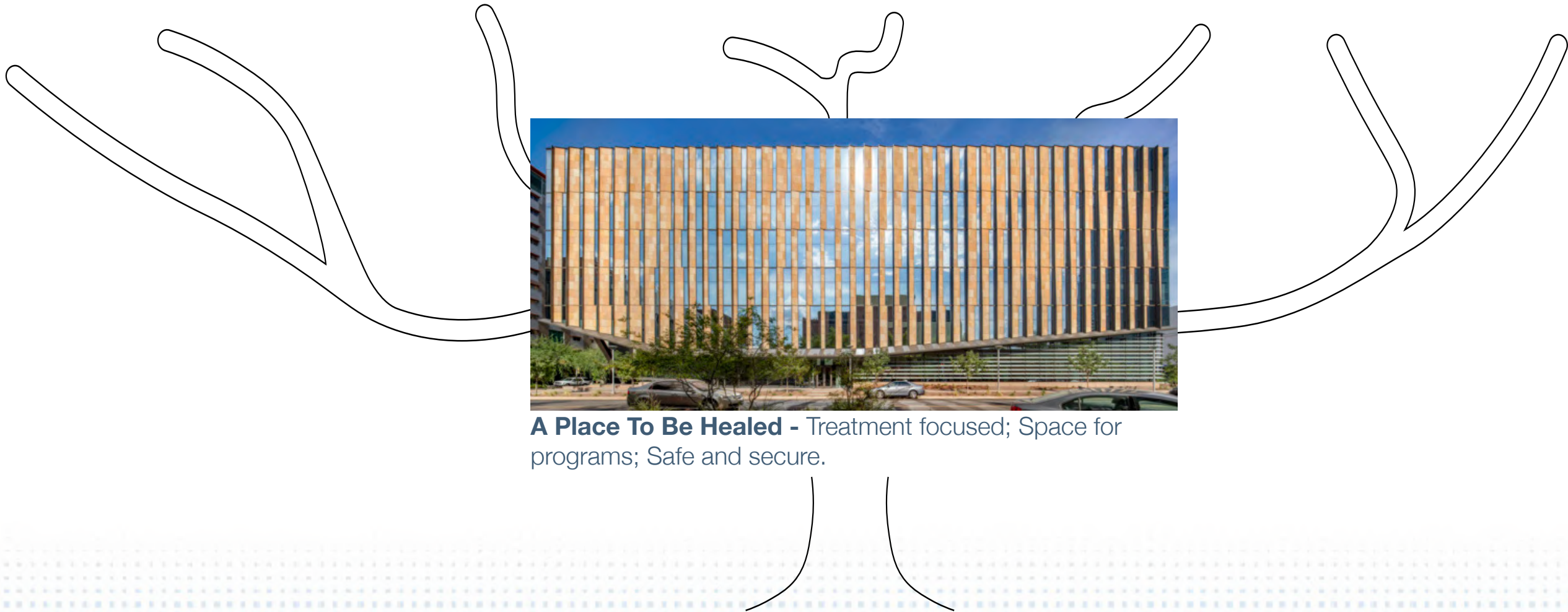
Lively Streetscape - Activate full site along Massachusetts Avenue extension; Connectivity between buildings; Landscape interventions as boundaries for security.



Accessible Entrance - Visible entryway from public space; Common yet separate entry locations for staff and public; Entry relates to all buildings; Welcoming yet secure.



Functionally Anonymous - Blur scale and function of buildings; Develop moments of reveal to maximize interior daylighting and views; Unify buildings with façade.



A Place To Be Healed - Treatment focused; Space for programs; Safe and secure.

