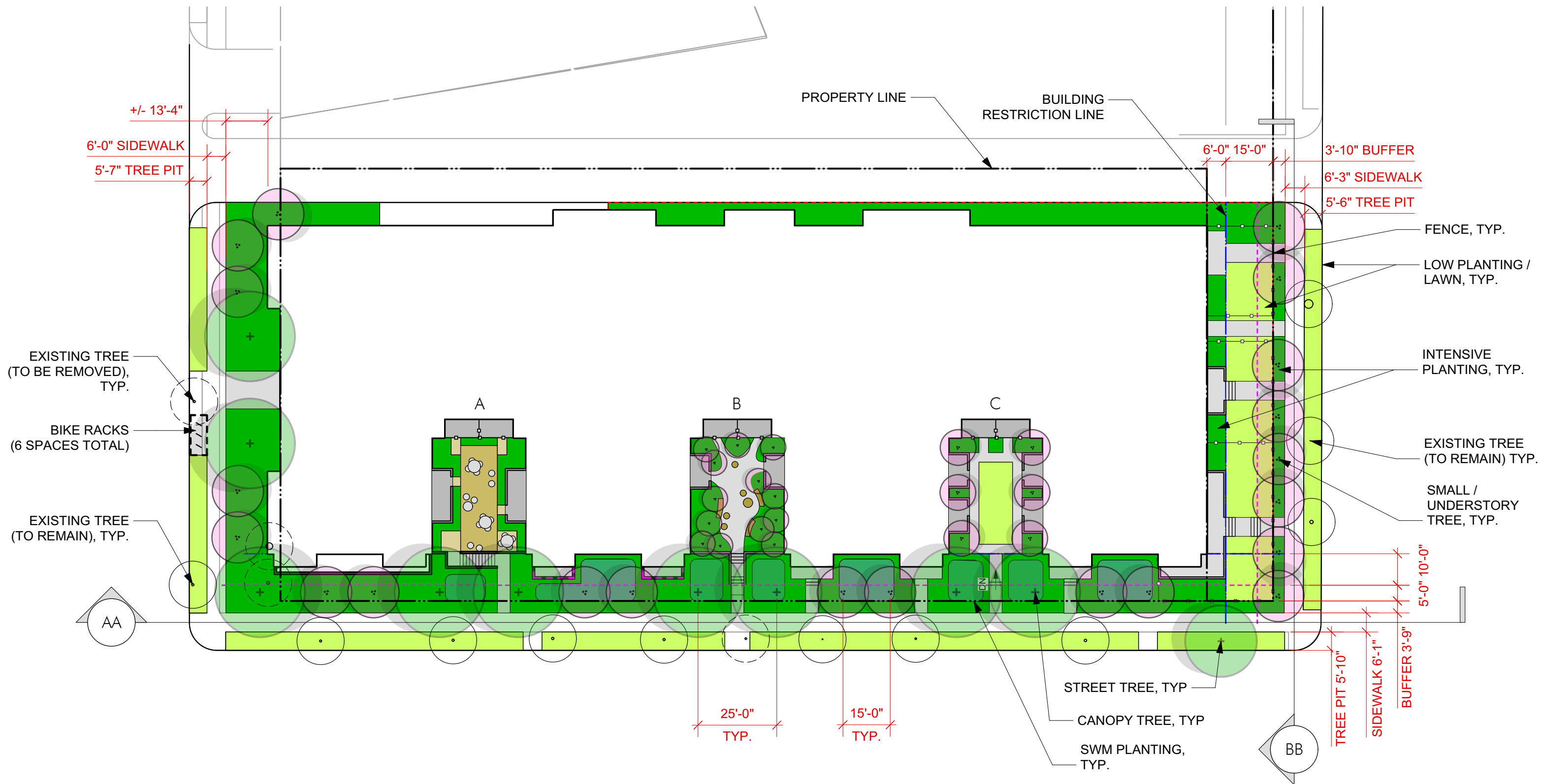
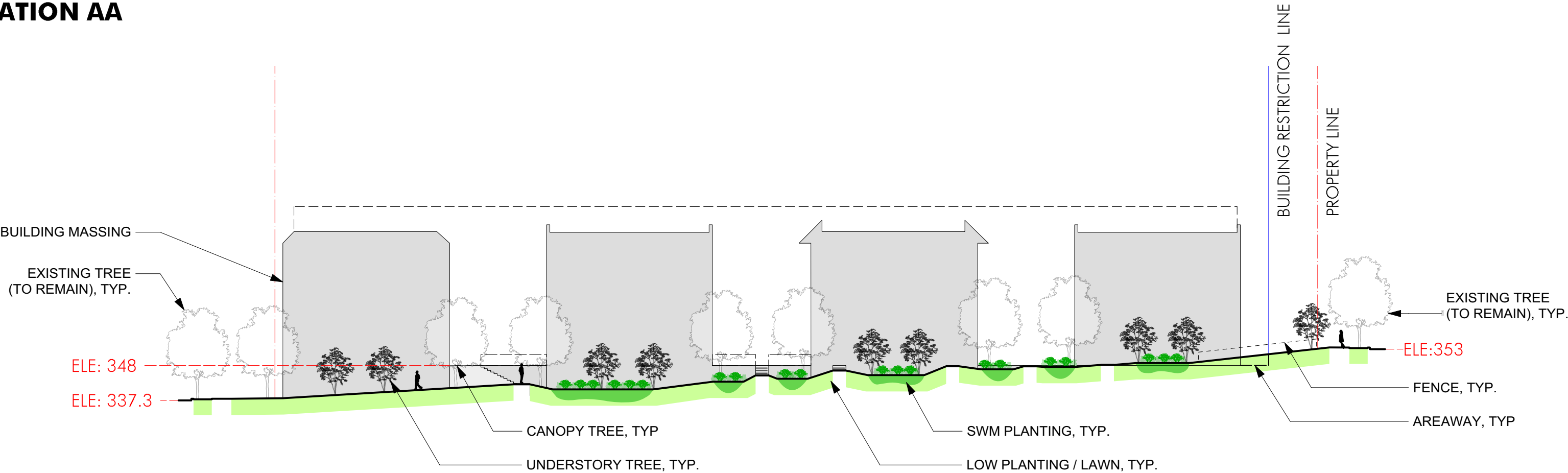


Landscape Exhibits



NOTE: Landscape design is schematic and represents the design intent. Adjustments to size, location and material of landscape elements may occur.
 Final location, attributes, and general design of the approved streetscape may vary in order to comply with the requirements of, and approval by, the DDOT Public Space Division.

STREETSCAPE
ELEVATION AA



PLANTING CHARACTER

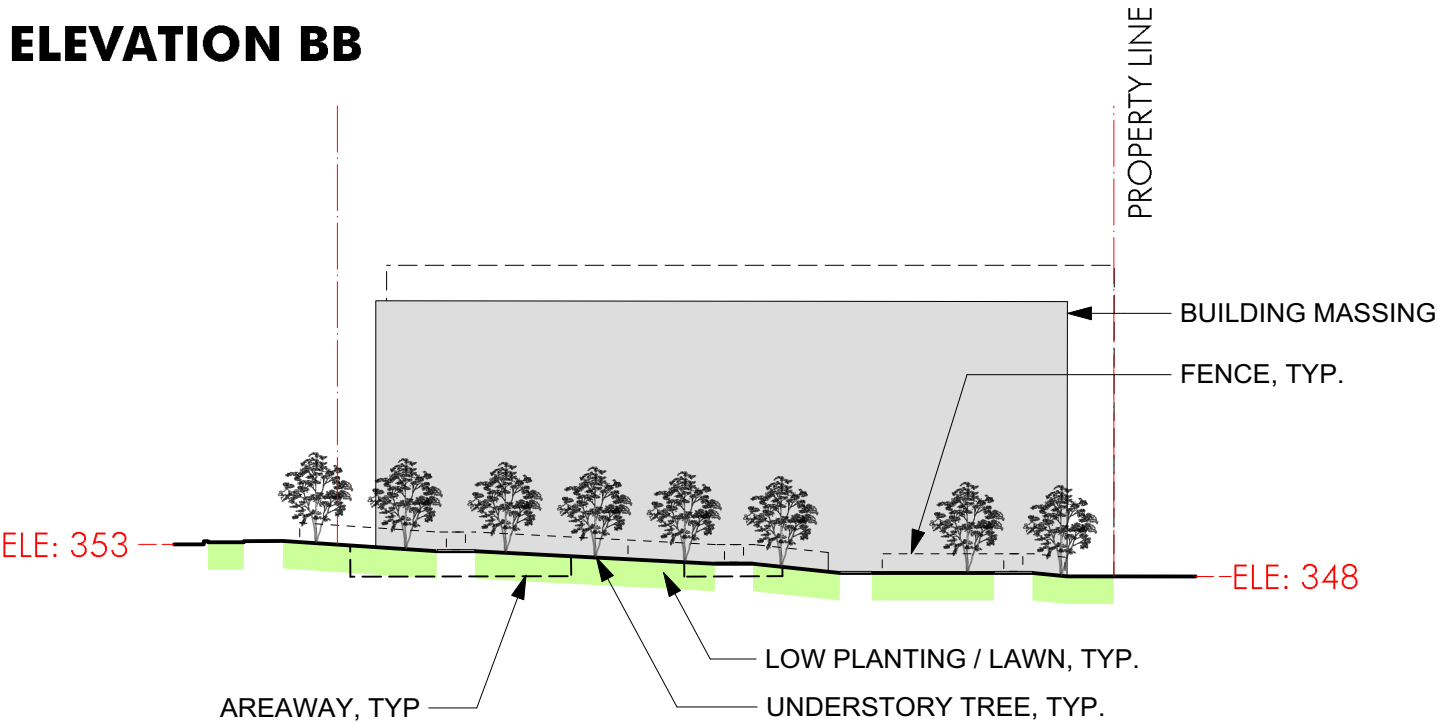
AREAWAY



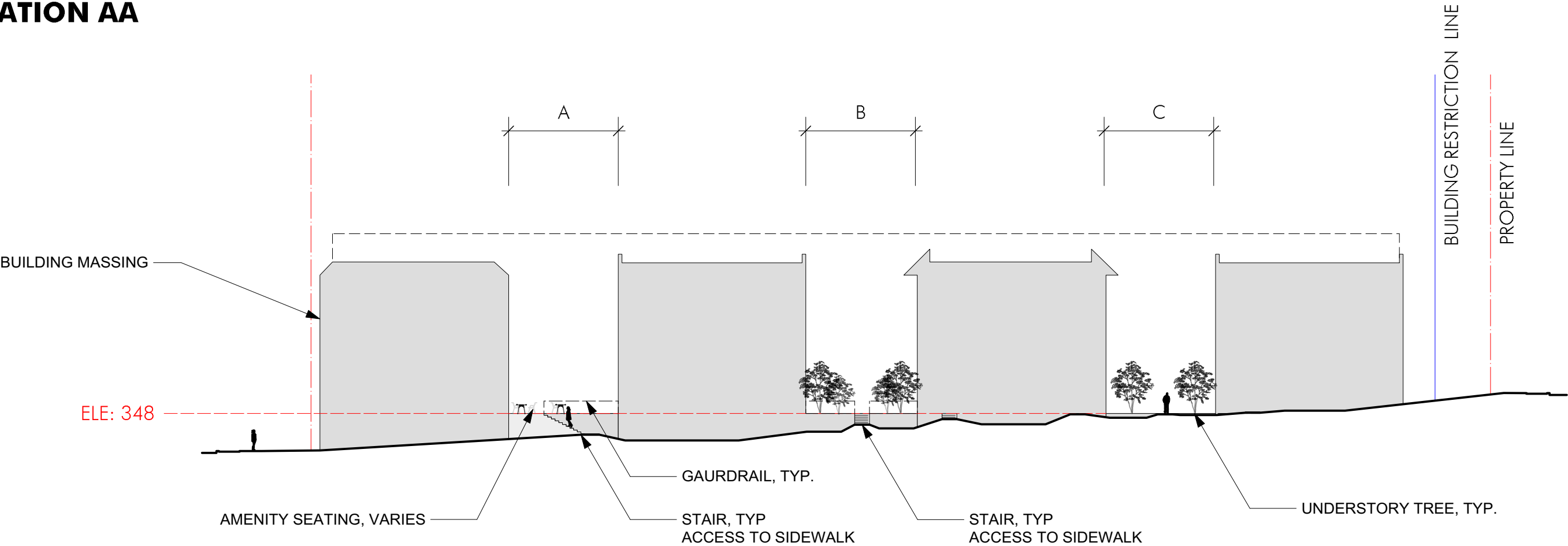
SWM / RAIN GARDEN



ELEVATION BB



COURTYARDS
ELEVATION AA



COURTYARD CHARACTER



LANDSCAPE PALETTE | **PLANTING**

STREETSCAPE

STREET TREES| **CANOPY TREES**| **UNDERSTORY TREES**



Amur Maple
Acer tataricum subsp. ginnala
Initial size: 8-10’ ht.; Mature size: 20’ ht.



Blackgum
Nyssa sylvatica
Initial size: 3” cal.; Mature Size: 40’ ht.



American Elm
Ulmus americana ‘Jefferson’
Initial size: 4” cal.; Mature size: 60’ ht.



Eastern Redbud
Cercis canadensis
Initial size: 3” cal.; Mature size: 20’ ht.



Serviceberry
Amelanchier x grandiflora ‘Autumn Brilliance’
Initial size: 8-10’ height; Mature size: 20’ ht



Carolina Silverbell
Halesia carolina
Initial size: 30’ height

SHRUBS & GRASSES| **PERENNIALS & BULBS**



Oakleaf Hydrangea
Hydrangea quercifolia ‘Pee Wee’
Mature size: 3-4’ ht.



Virginia Sweetspire
Itea virginica ‘Henry’s Garnet’
Mature size: 3-4’ ht.



Winterberry Holly
Ilex verticillata
Mature size: 6-12’ ht.



Pink Muhlygrass
Muhlenbergia capillaris
Mature size: 3-4’ ht.



Mexican Feather Grass
Nassella tenuissima
Mature size: 1-2’ ht.



Indian Woodoats
Chasmanthium latifolium
Mature size: 3-4’ ht.



White False Indigo
Baptisia alba
Mature size: 2-4’ ht.



Swamp Milkweed
Asclepias incarnata
Mature size: 3-5’ ht.



Blue Flag Iris
Iris versicolor
Mature size: 2-2.5’ ht.



Wild Bergamot
Monarda fistulosa
Mature size: 2-4’ ht.



Caradonna Sage
Salvia nemorosa ‘Caradonna’
Mature size: 1-2’ ht.



Daffodil
Narcissus sp.
Mature size: 1-1.5’ ht.

COURTYARDS

LARGE SHRUBS.....| **MEDIUM SHRUBS & FERNS**| **PERENNIALS & GROUNDCOVER**



Witch Hazel
Hamamelis × intermedia ‘Jelena’
Mature size: 8-12’ ht.



Cunningham’s White Rhododendron
Rhododendron catawbiense
Mature size: 6-10’ ht.



Cinnamon Fern
O. cinnamomeum
Mature size: 4-6’ ht.



Haas’ Halo Hydrangea
H. arborescens ‘Haas’ Halo’
Mature size: 3-5’ ht.



Dwarf Fothergilla
Fothergilla gardenii
Mature size: 2-3’ ht.



Solomon’s Seal
Polygonatum odoratum
Mature size: 1.5-2’ ht.



Drinking Gourd Hosta
H. ‘Abiqua Drinking Gourd’
Mature size: 1.5’ ht.



Eastern Beebalm
Monarda bradburiana
Mature size: 1-2’ ht.



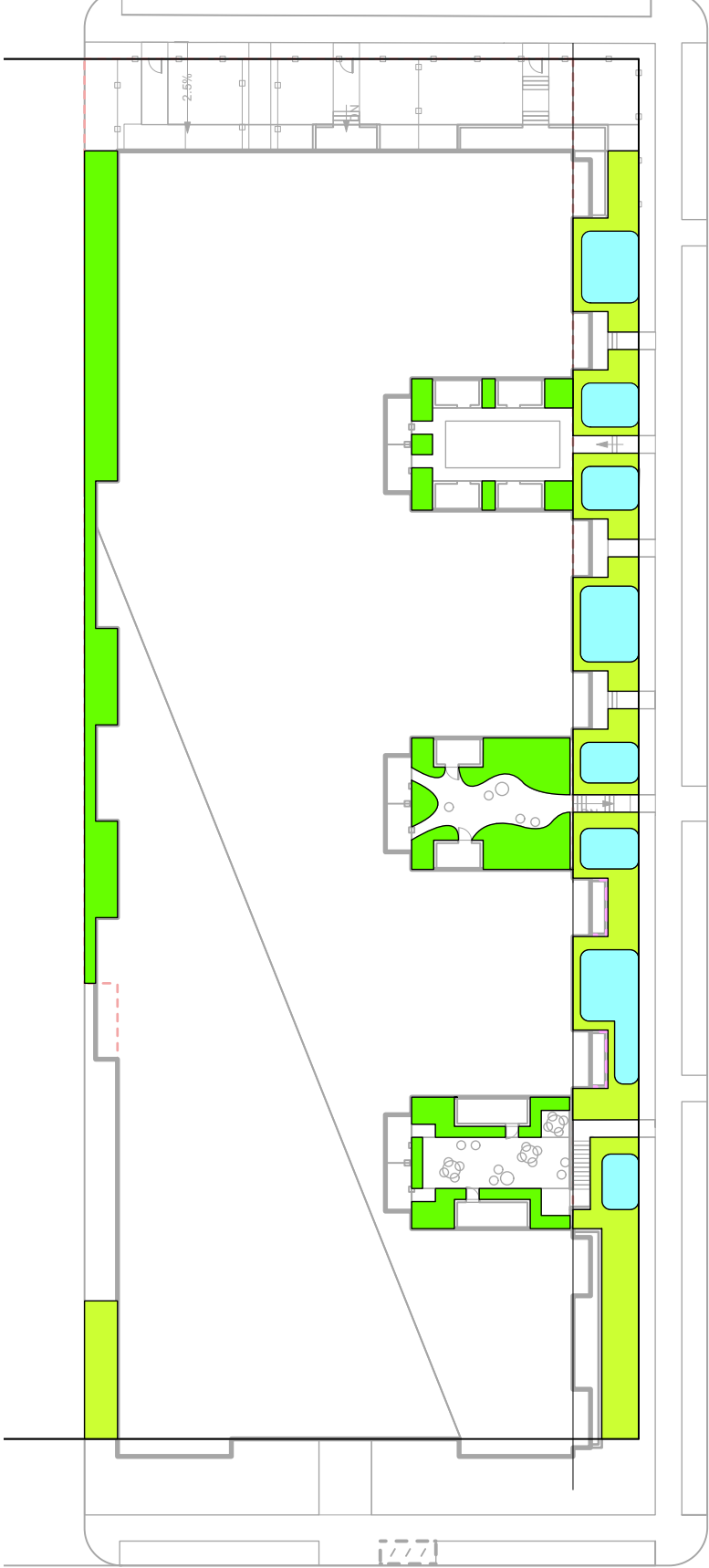
Blue Sedge
Carex flacca ‘Blue Zinger’
Mature size: 1-1.5’ ht.



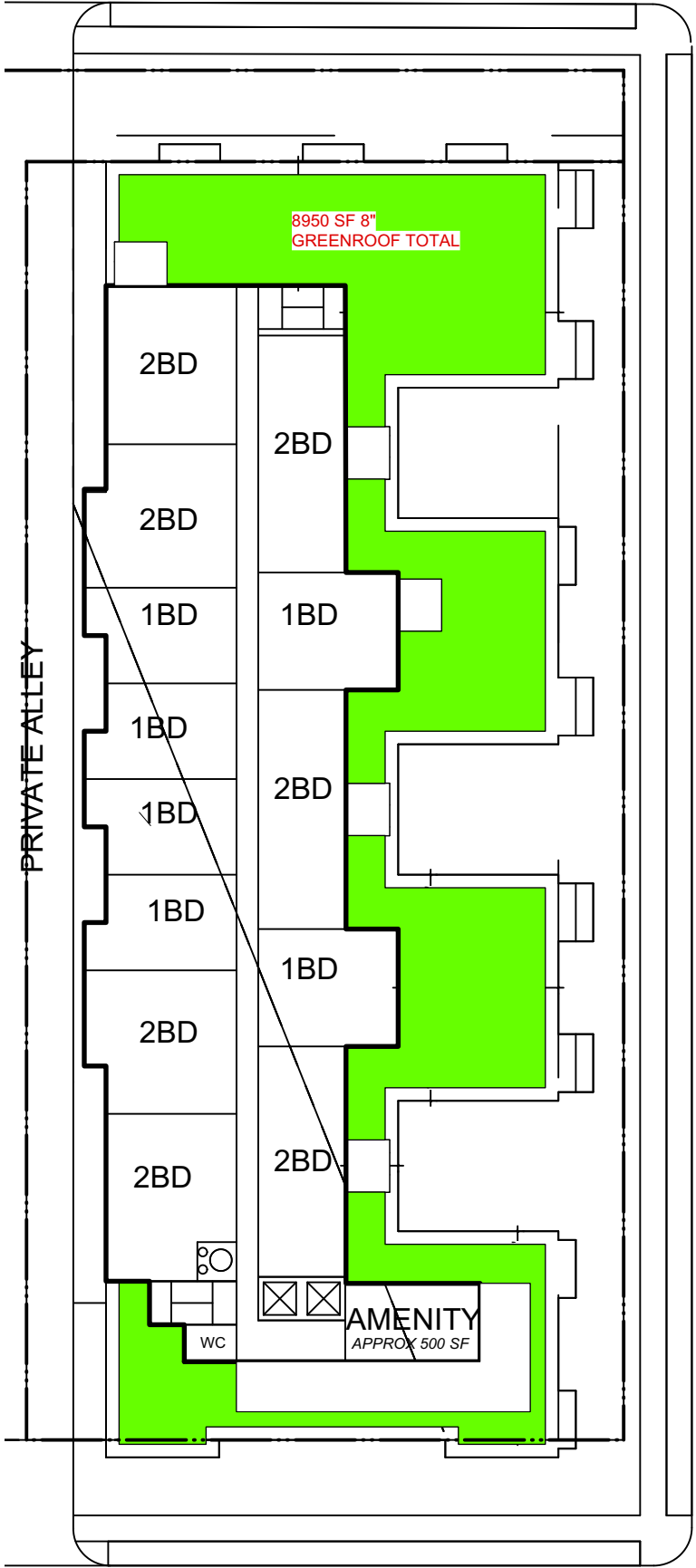
Coral Bells
Heuchera americana
Mature size: 0.5-1’ ht.



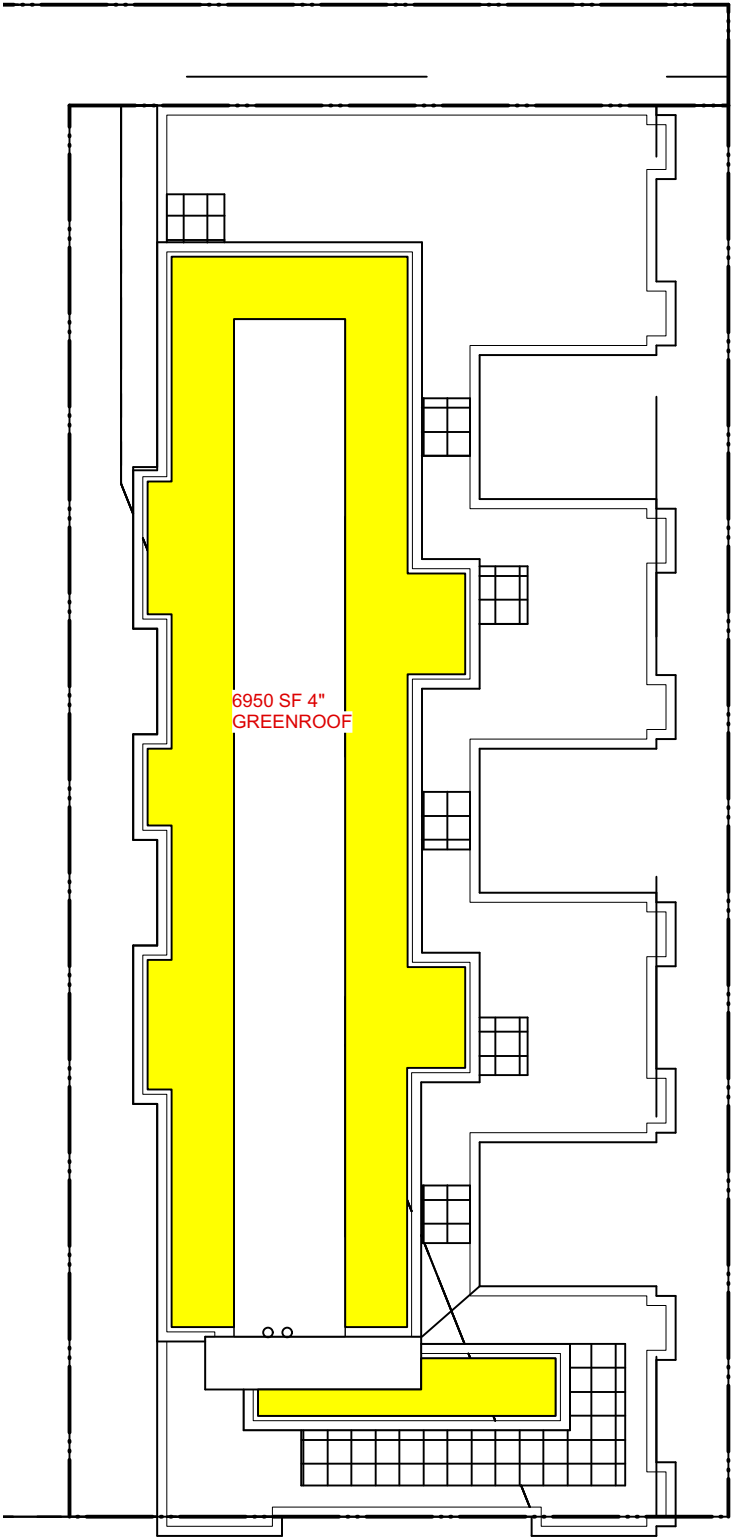
Wild Geranium
Geranium maculatum
Mature size: 1’ ht.



1 GAR DIAGRAM - 1ST FL
Scale: 1" = 40'-0"



2 GAR DIAGRAM - 5TH FL
Scale: 1" = 40'-0"



3 GAR DIAGRAM - ROOF
Scale: 1" = 40'-0"

Green Area Ratio Scoresheet						
Address		Square		Lot	Zone District	
Other						
Lot size (enter this value first) *		Lot area (sf)	Minimum Score	Multiplier	GAR Score	
		40,358	0.3	SCORE:	0.374	
Landscape Elements						
		Square Feet	Factor	Total		
A Landscaped areas (select one of the following for each area)						
1	Landscaped areas with a soil depth < 24"	<div>square feet</div>	0.30	-		
2	Landscaped areas with a soil depth ≥ 24"	<div>square feet</div> <div>2,022</div>	0.60	1,213.2		
3	Bioretention facilities	<div>square feet</div> <div>1,324</div>	0.40	529.6		
B Plantings (credit for plants in landscaped areas from Section A)						
1	Groundcovers, or other plants < 2' height	<div>square feet</div>	0.20	<div>Native Bonus</div> <div>square feet</div>	-	
2	Plants ≥ 2' height at maturity - calculated at 9-sf per plant	<div># of plants</div>	0.30	<div># of plants</div>	-	
3	New trees with less than 40-foot canopy spread - calculated at 50 sq ft per tree	<div># of trees</div>	0.50	<div># of trees</div>	-	
4	New trees with 40-foot or greater canopy spread - calculated at 250 sq ft per tree	<div># of trees</div>	0.60	<div># of trees</div>	-	
5	Preservation of existing tree 6" to 12" DBH - calculated at 250 sq ft per tree	<div># of trees</div>	0.70	<div># of trees</div>	-	
6	Preservation of existing tree 12" to 18" DBH - calculated at 600 sq ft per tree	<div># of trees</div>	0.70	<div># of trees</div>	-	
7	Preservation of existing trees 18" to 24" DBH - calculated at 1300 sq ft per tree	<div># of trees</div>	0.70	<div># of trees</div>	-	
8	Preservation of existing trees 24" DBH or greater - calculated at 2000 sq ft per tree	<div># of trees</div>	0.80	<div># of trees</div>	-	
9	Vegetated wall, plantings on a vertical surface	<div>square feet</div>	0.60	<div>square feet</div>	-	
C Vegetated or "green" roofs						
1	Over at least 2" and less than 8" of growth medium	<div>square feet</div> <div>6,950</div>	0.60	<div>square feet</div>	4,170.0	
2	Over at least 8" of growth medium	<div>square feet</div> <div>11,187</div>	0.80	<div>square feet</div> <div>2,237</div>	8,949.6	
D Permeable Paving***						
1	Permeable paving over 6" to 24" of soil or gravel	<div>square feet</div>	0.40	-		
2	Permeable paving over at least 24" of soil or gravel	<div>square feet</div>	0.50	-		
E Other						
1	Enhanced tree growth systems***	<div>square feet</div>	0.40	-		
2	Renewable energy generation	<div>square feet</div>	0.50	-		
3	Approved water features	<div>square feet</div>	0.20	-		
		sub-total of sq ft =		21,483		
F Bonuses						
1	Native plant species	<div>square feet</div> <div>2,237</div>	0.10	223.7		
2	Landscaping in food cultivation	<div>square feet</div>	0.10	-		
3	Harvested stormwater irrigation	<div>square feet</div>	0.10	-		
		Green Area Ratio numerator =		15,086		
*** Permeable paving and structural soil together may not qualify for more than one third of the Green Area Ratio score. Total square footage of all permeable paving and enhanced tree growth.						

NOTE: GAR based on initial calculations to be refined in coordination with DOEE standards and record lot evaluation.
Exact locations and layout of green areas to be refined through the design development.

- A2: LANDSCAPE AREA W/ SOIL DEPTH > 24"
- A3: BIO-RETENTION FACILITIES
- C2: GREEN ROOF OVER 8" SOIL DEPTH
- C1: GREEN ROOF 2" - 8" SOIL DEPTH