

Architecture Exhibits

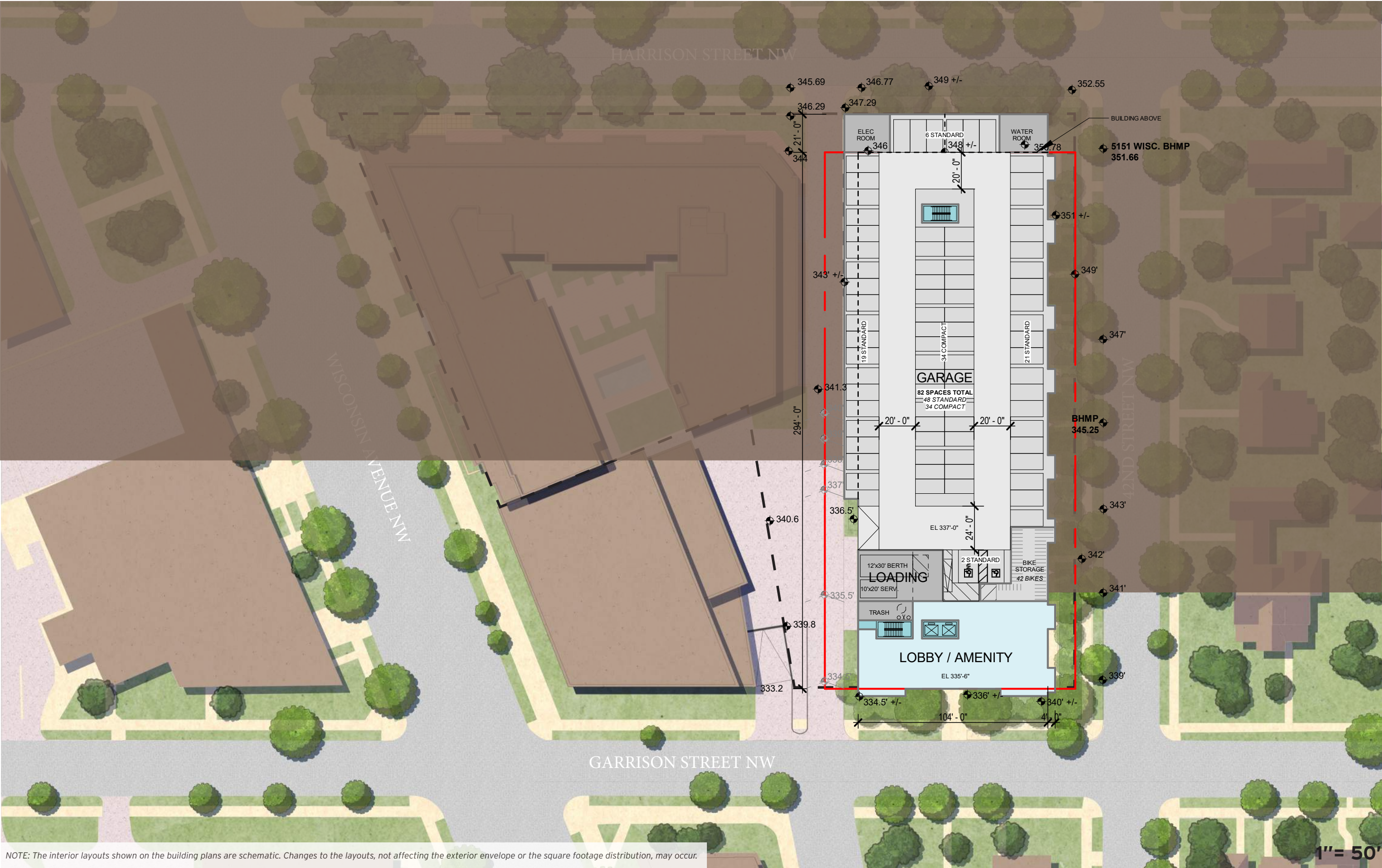


June 13, 2025 | ©2025 Torti Gallas Urban | 1923 Vermont Avenue, NW, Grimke School, 2nd Floor | Washington, DC 20001 | 301.588.4800

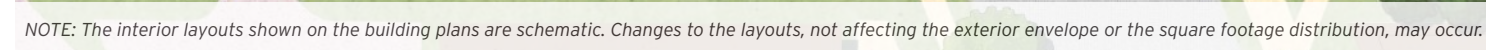
DONOHUE

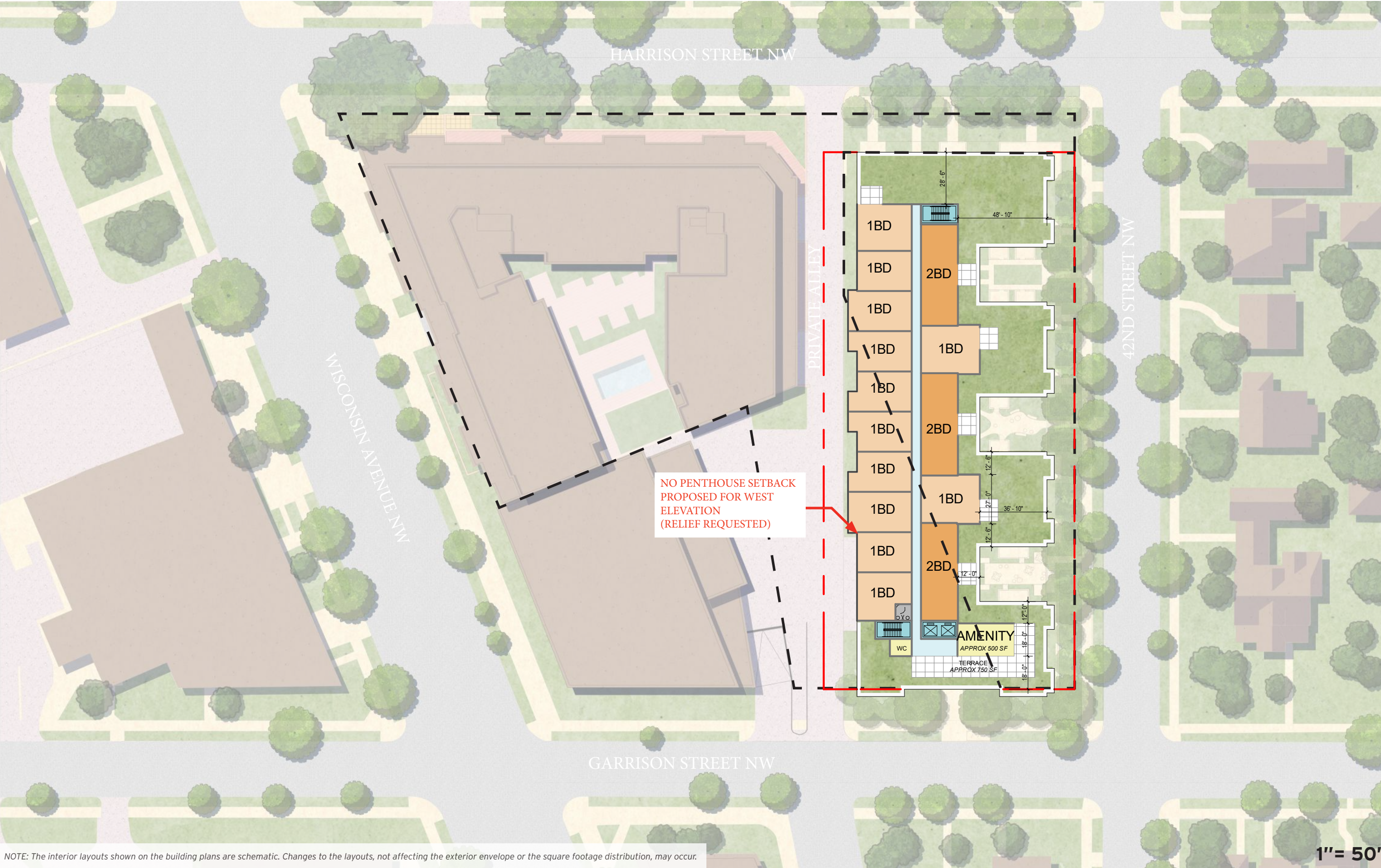


ILLUSTRATIVE SITE PLAN WITH CONTEXT
PUD SUBMISSION | **4201 GARRISON ST**

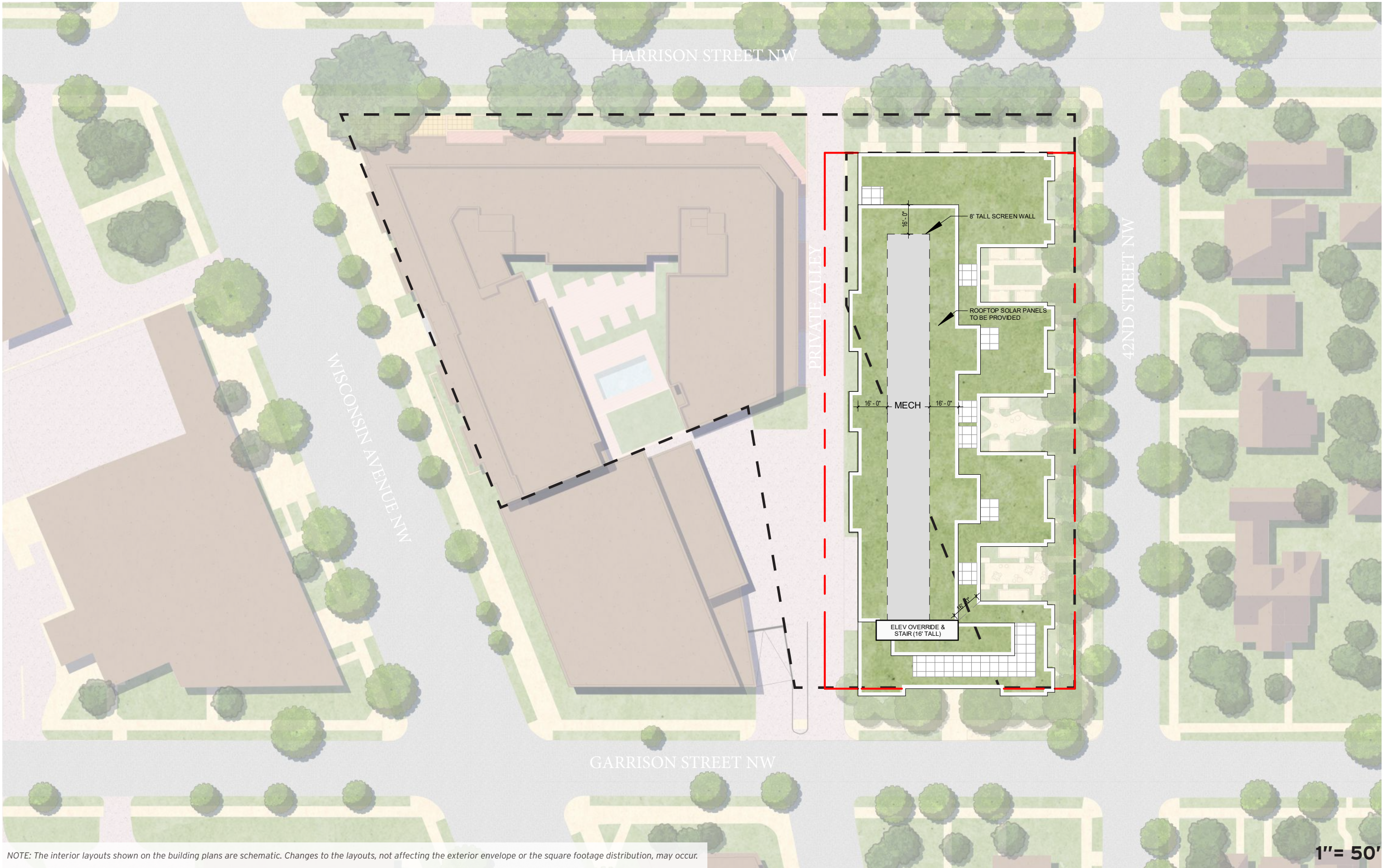


June 13, 2025 | ©2025 Torti Gallas Urban | 1923 Vermont Avenue, NW, Grimke School, 2nd Floor | Washington, DC 20001 | 301.588.4800

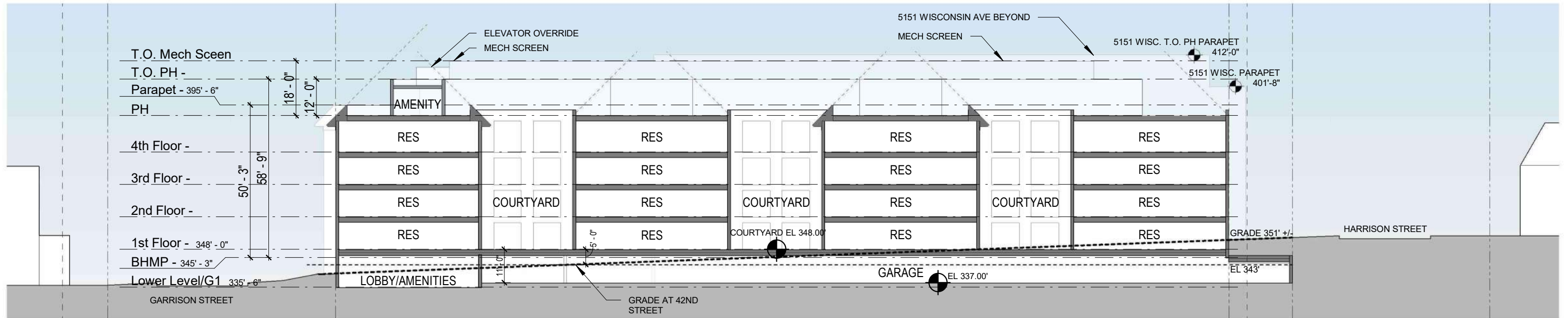




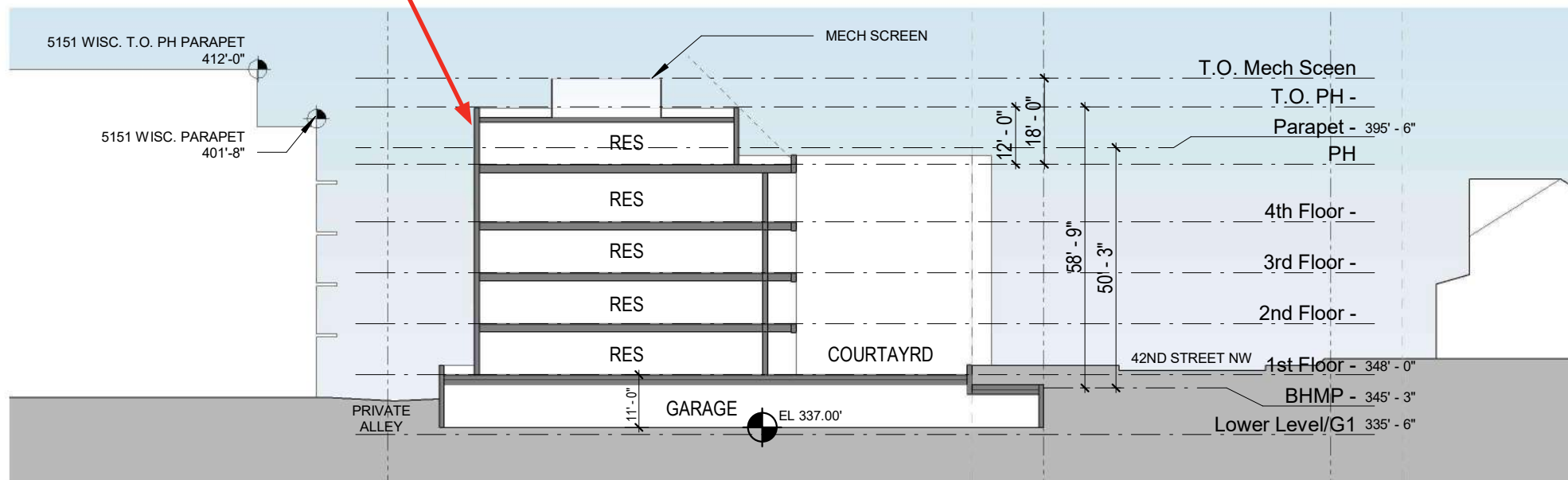
NOTE: The interior layouts shown on the building plans are schematic. Changes to the layouts, not affecting the exterior envelope or the square footage distribution, may occur.

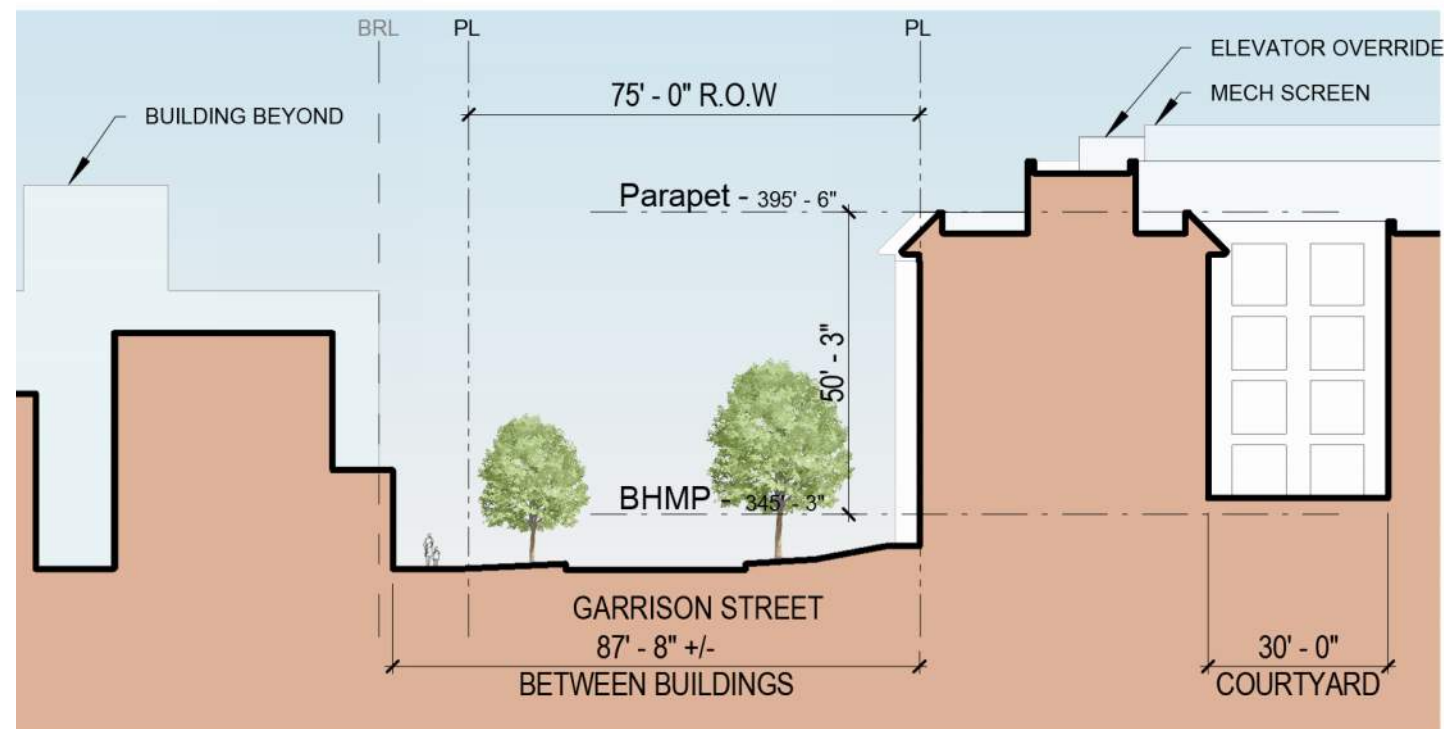


NOTE: The interior layouts shown on the building plans are schematic. Changes to the layouts, not affecting the exterior envelope or the square footage distribution, may occur.

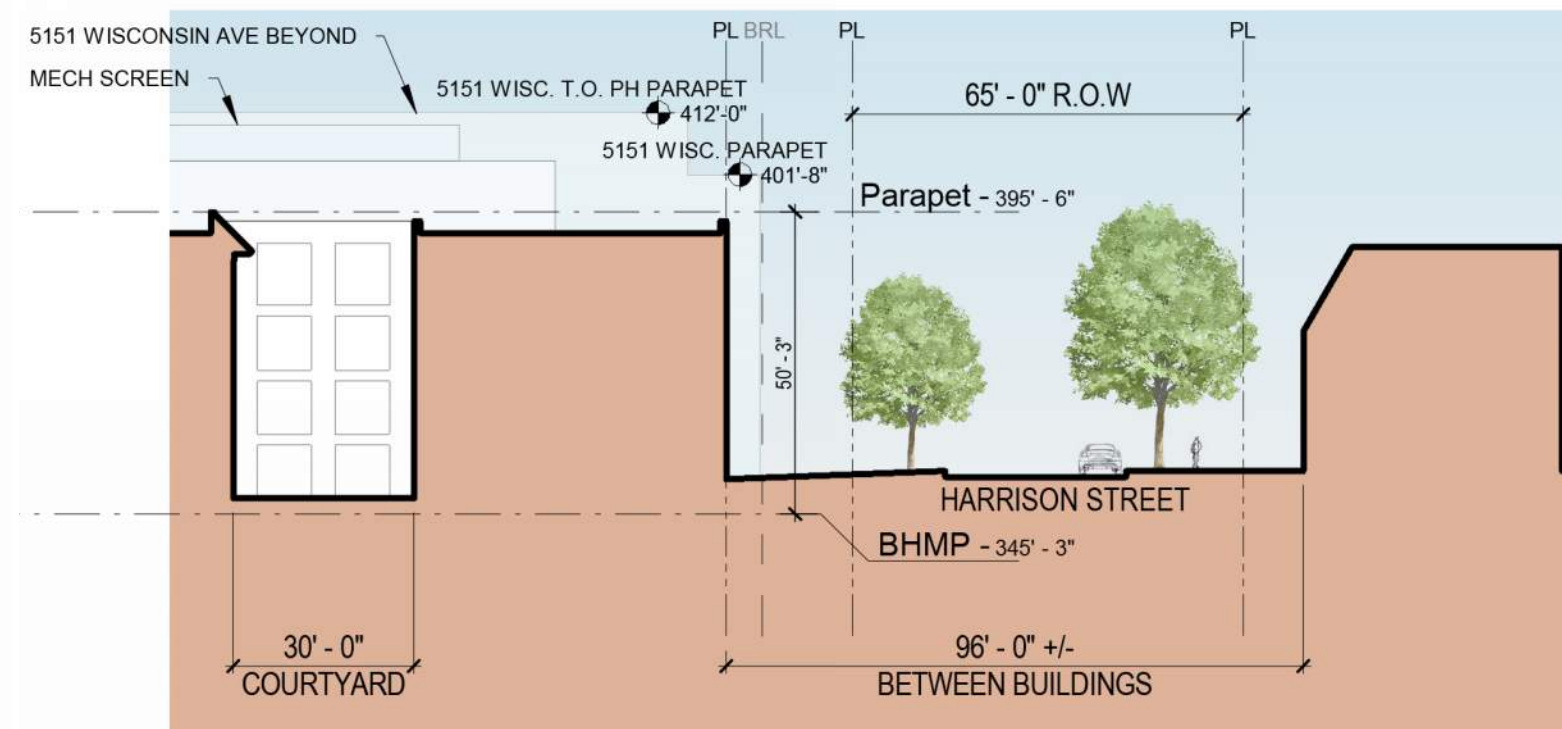


NO PENTHOUSE SETBACK
PROPOSED FOR WEST
ELEVATION
(RELIEF REQUESTED)

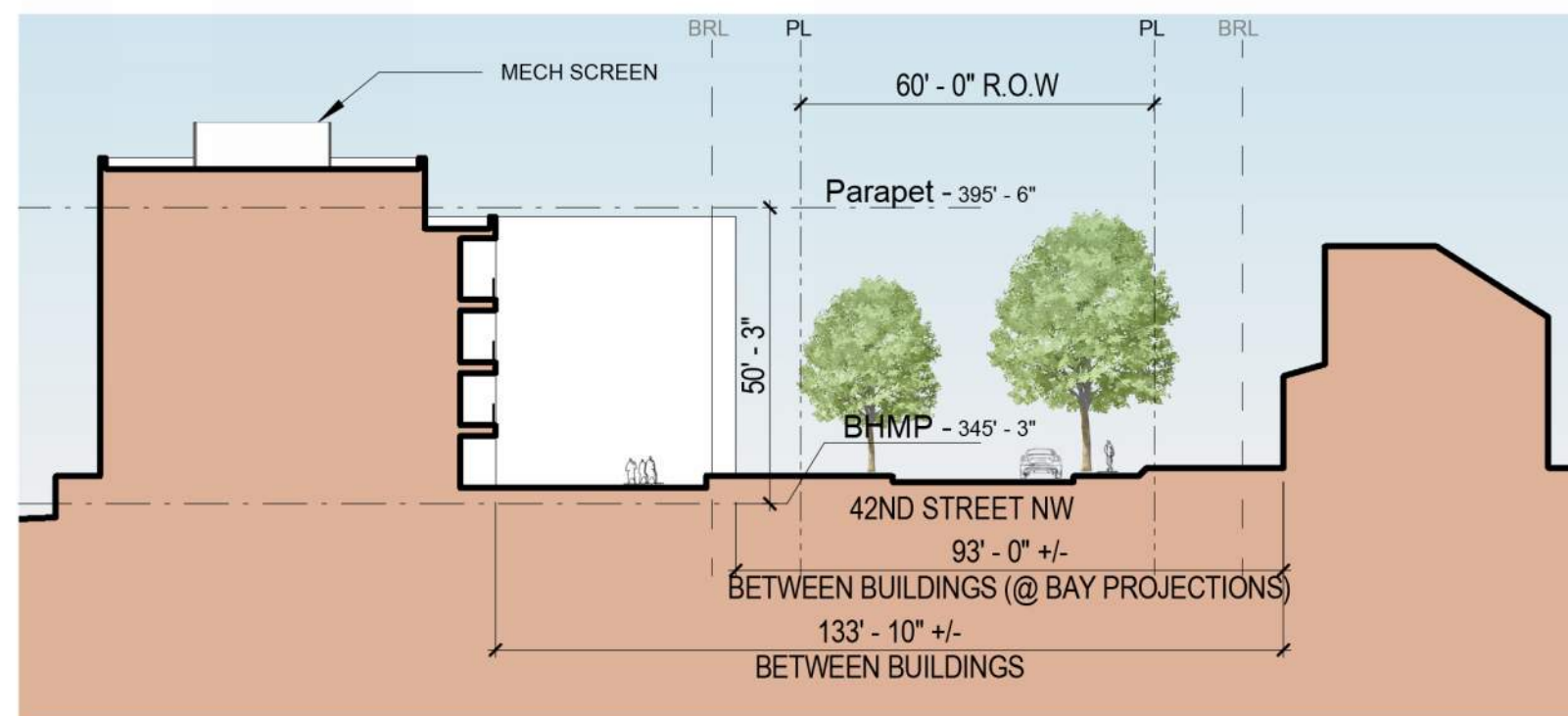




SECTION A



SECTION B



SECTION C





ADAMS MORGAN



R STREET WARDMANS



R STREET WARDMANS



R STREET WARDMANS

June 13, 2025 ©2025 Torti Gallas Urban | 1923 Vermont Avenue, NW, Grimke School, 2nd Floor | Washington, DC 20001 | 301.588.4800



NOTE: Representation of architecture is conceptual, see architectural elevations for accurate design intent and information.
 Representation of landscape is conceptual, see Landscape drawings for accurate design intent and information.
 Rendering view, angle and lighting chosen to best illustrate design intent.

June 13, 2025 ©2025 Torti Gallas Urban | 1923 Vermont Avenue, NW, Grimke School, 2nd Floor | Washington, DC 20001 | 301.588.4800

DONOHUE



VIEW FROM SOUTHEAST
 PUD SUBMISSION | **4201 GARRISON ST**



June 13, 2025 | ©2025 Torti Gallas Urban | 1923 Vermont Avenue, NW, Grimke School, 2nd Floor | Washington, DC 20001 | 301.588.4800

DONOHUE



VIEW FROM NORTHEAST
 PUD SUBMISSION | **4201 GARRISON ST**

T.O. Mech PH
 T.O. PH -
 Parapet - 395' - 6"
 PH
 4th Floor -
 3rd Floor -
 2nd Floor -
 1st Floor - 348' - 0"
 BHMP - 345' - 3"
 Lower Level/G1 335' - 6"



ELEVATION - 42ND STREET NW



T.O. Mech PH
 T.O. PH -
 Parapet - 395' - 6"
 PH
 4th Floor -
 3rd Floor -
 2nd Floor -
 1st Floor - 348' - 0"
 BHMP - 345' - 3"
 Lower Level/G1 335' - 6"

ELEVATION - PRIVATE ALLEY

NOTE: Minor refinements to the locations and dimensions of exterior details may occur in design development. Final selection of exterior materials will be based on availability at the time of construction.



ELEVATION - GARRISON STREET NW



ELEVATION - HARRISON STREET NW *NOTE: Minor refinements to the locations and dimensions of exterior details may occur in design development. Final selection of exterior materials will be based on availability at the time of construction.*



MATERIALS LEGEND

- 1 Masonry - Color #1
- 2 Cast Stone
- 3 Windows & Doors



Masonry Color #1 - Cream, Mortar Color TBD



Cast Stone Banding Windows and Doors



MATERIALS LEGEND

- 1 Masonry - Color #2
- 2 Cast Stone
- 3 Windows & Doors



Masonry Color #2 - Red, Mortar Color TBD



Cast Stone Banding Windows and Doors

NOTE: Minor refinements to the locations and dimensions of exterior details may occur in design development. Final selection of exterior materials will be based on availability at the time of construction.



MATERIALS LEGEND

- 1 Masonry - Color #3
- 2 Cast Stone
- 3 Windows & Doors



Masonry Color #3 - Warm Brown, Mortar Color TBD



Cast Stone Banding

Windows and Doors



MATERIALS LEGEND

- 1 Masonry - Color #4
- 2 Cast Stone
- 3 Windows & Doors



Masonry Color #4 - Blonde, Mortar Color TBD



Cast Stone Banding

Windows and Doors

NOTE: Minor refinements to the locations and dimensions of exterior details may occur in design development. Final selection of exterior materials will be based on availability at the time of construction.