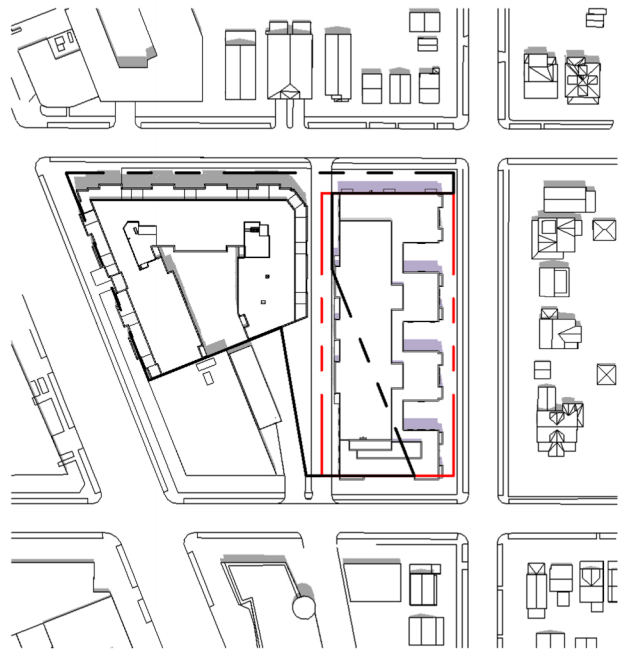
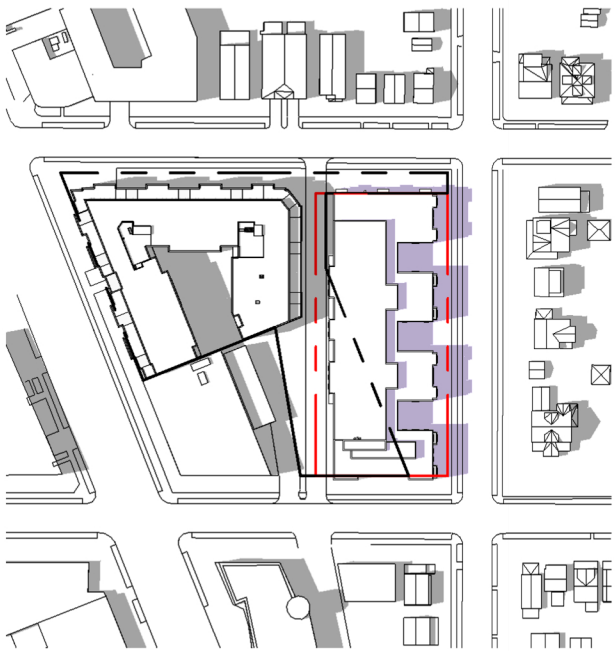




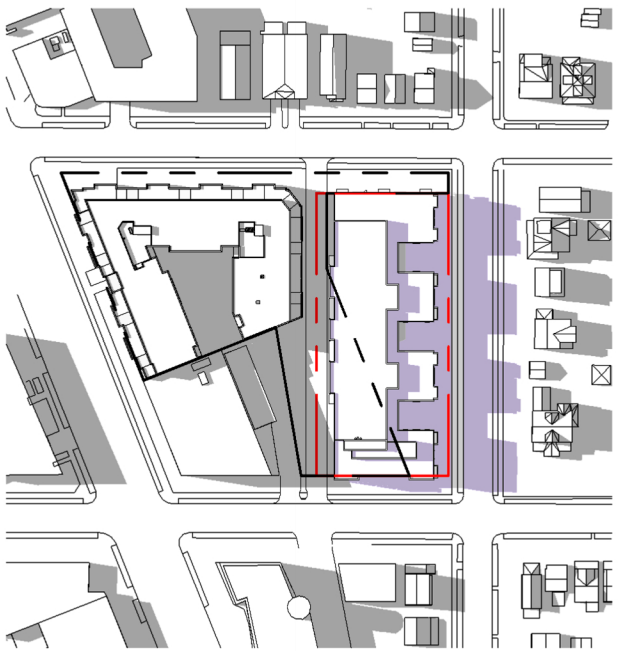
SUMMER SOLSTICE - 9AM



SUMMER SOLSTICE - 12PM



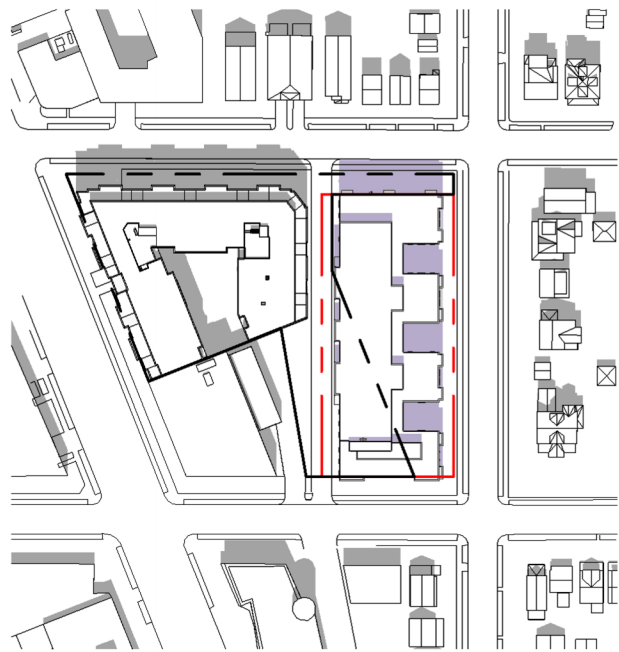
SUMMER SOLSTICE - 3PM



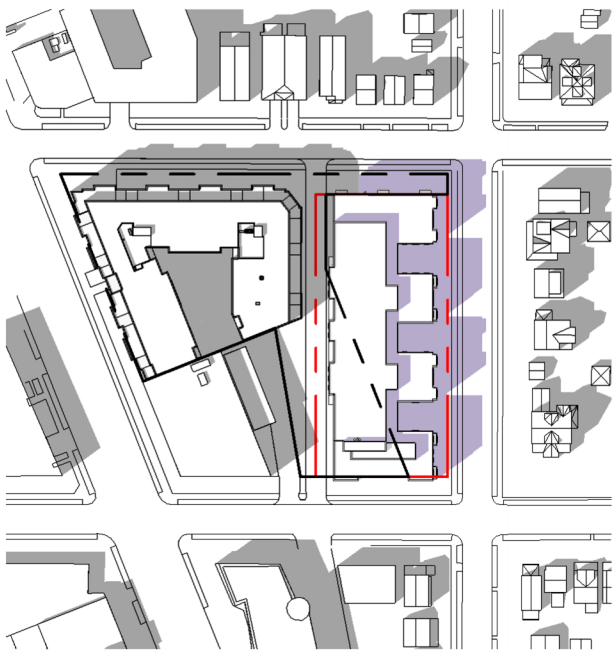
SUMMER SOLSTICE - 5PM



SPRING/FALL EQUINOX - 9AM



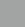

SPRING/FALL EQUINOX - 12PM



SPRING/FALL EQUINOX - 3PM



SPRING/FALL EQUINOX - 5PM

 SHADOW CREATED BY EXISTING/APPROVED DEVELOPMENT
 NEW 'ADDITIVE' SHADOW CREATED BY PROPOSED BUILDING

NOTE: Shadows indicated in purple represent shadows created by the proposed building and are 'additive' over shadows created by existing/approved development. Existing TV tower would be removed prior and is not shown.

July 21, 2025 ©2025 Torti Gallas Urban | 1923 Vermont Avenue, NW, Grimke School, 2nd Floor | Washington, DC 20001 | 301.588.4800

DONOHUE

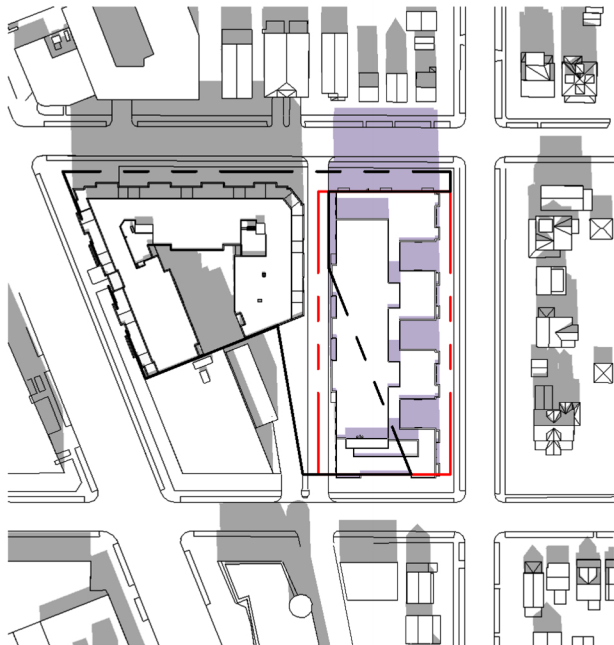
**TORTI
GALLAS
URBAN**

1" = 200'

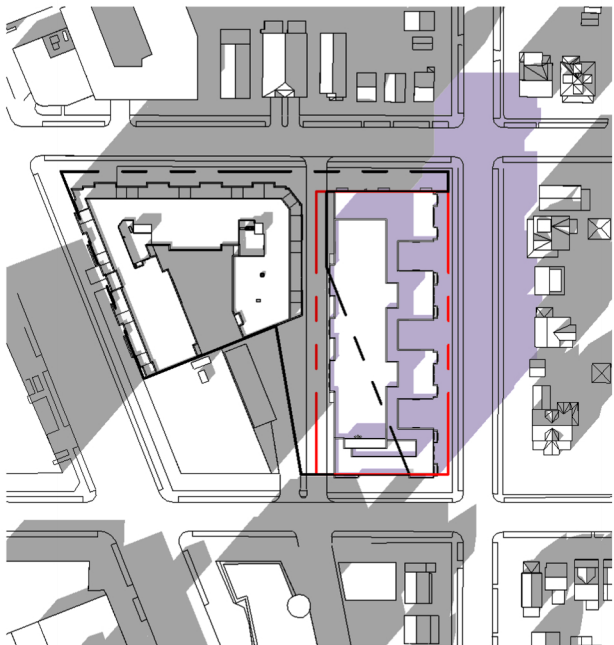
SHADOW STUDIES
 ZONING COMMISSION
 District of Columbia
 PUD SUBMISSION | **4201 GARRISON ST**
 EXHIBIT NO.88A



WINTER SOLSTICE - 9AM



WINTER SOLSTICE - 12PM



WINTER SOLSTICE - 3PM

- SHADOW CREATED BY EXISTING/APPROVED DEVELOPMENT
- NEW 'ADDITIVE' SHADOW CREATED BY PROPOSED BUILDING

NOTE: Shadows indicated in purple represent shadows created by the proposed building and are 'additive' over shadows created by existing/approved development. Existing TV tower would be removed prior and is not shown.

July 21, 2025 ©2025 Torti Gallas Urban | 1923 Vermont Avenue, NW, Grimke School, 2nd Floor | Washington, DC 20001 | 301.588.4800