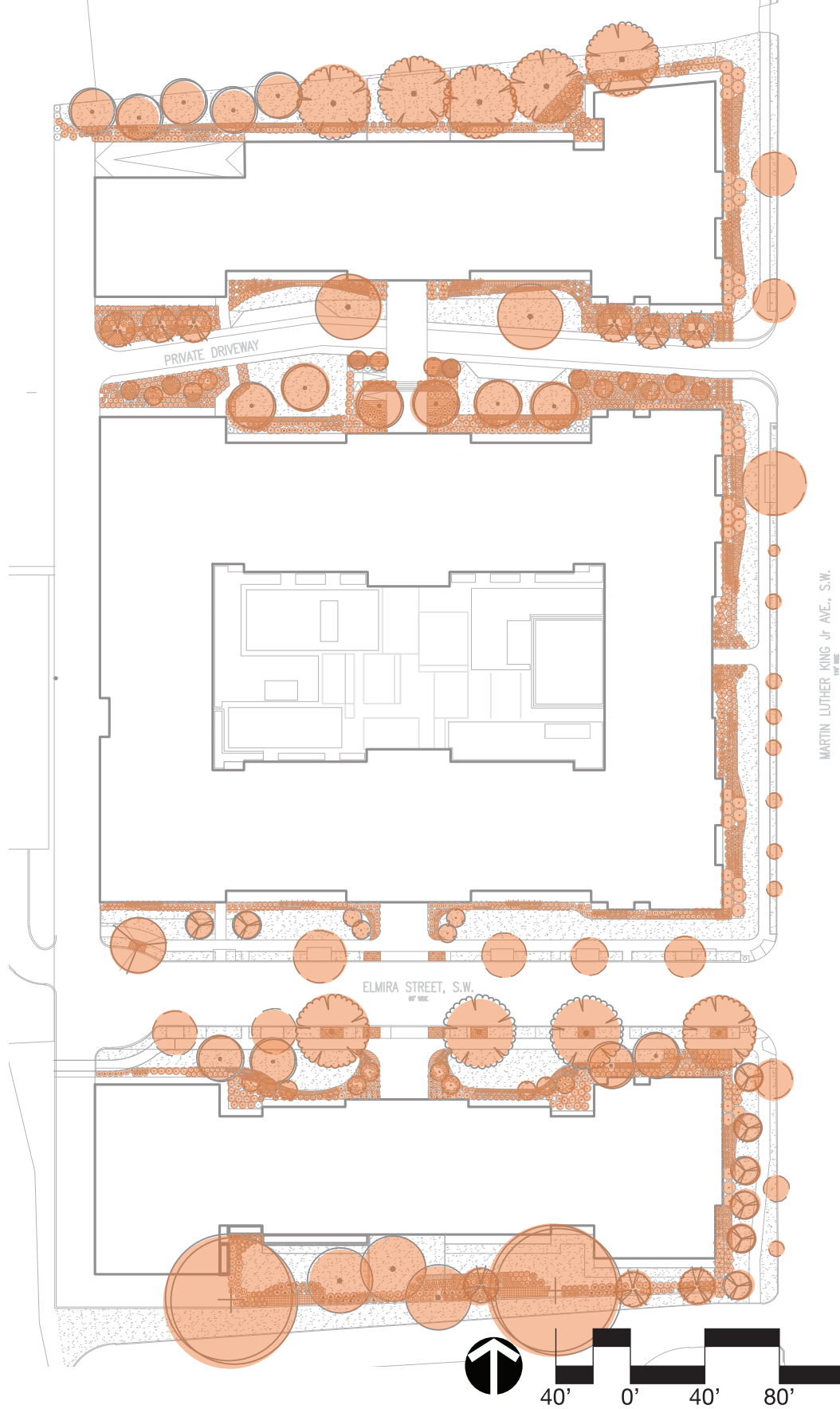


SEASONALITY: FALL

As summer turns to fall our plant palette becomes rich with red, oranges, and yellows as the leaves of many trees, shrubs, and ferns begin to change with the season. In contrast the evergreen shrubs hold onto their green color providing stability through out the year. Many plants are holding onto their blooms from summer, such as Mountain Laurel, Oakleaf Hydrangea, Lavender, and Rosemary. While Winter Daphne will just be starting to bloom in late fall for their winter show and magnificent aroma. Textures will start to adjust as ornamental grasses will become dryer and more coarse.



*Cornus florida*  
Flowering Dogwood



*Acer rubrum*  
Red Maple



*Betula nigra 'duraheat'*  
River Birch Multi-trunk



*Platanus occidentalis*  
American Sycamore



*Betula nigra 'Little King'*  
Dwarf River Birch



*Tilia tomentosa*  
Silver Linden



*Cercis canadensis*  
Eastern Redbud Multi-trunk



*Quercus shumardii 'Qssth'*  
Prominence Shumard Oak



*Daphne odora*  
Winter Daphne



*Sarcococca ruscifolia*  
Fragrant Sweetbox



*Myrica cerifera 'Don's Dwarf'*  
Don's Dwarf Wax Laurel



*Kalmia latifolia 'Olympic Fire'*  
Olympic Fire Mountain Laurel



*Ilex glabra 'Gem Box'*  
Gem Box Inkberry Holly



*Rosmarinus officinalis*  
Rosemary



*Kalmia latifolia 'elf'*  
Elf Dwarf Mountain Laurel



*Prunus laurocerasus 'schipkaensis'*  
Schipka English Laurel



*Ilex glabra 'Compacta'*  
Compact Inkberry



*Hydrangea quercifolia 'Pee Wee'*  
Pee-Wee Oakleaf Hydrangea



*Cornus sericea 'Kelsey'*  
Kelsey Dwarf Red Twig Dogwood



*Clethra alnifolia Sugartina 'Crystalina'*  
Dwarf Summersweet



*Calamagrostis x acutiflora 'Karl Foerster'*  
Karl Foerster Feather Reed Grass



*Scirpus cyperrinus*  
Wool Grass



*Muhlenbergia capillaris 'regal mist'*  
Pink Muhly Grass



*Carex pennsylvanica*  
Pennsylvania sedge



*Lavandula angustifolia 'Hidcote'*  
Hidcote English Lavender



*Rudbeckia hirta*  
Black-eyed Susan



*Eutrochium purpureum*  
Joe Pye Weed



*Phlox divaricata*  
Woodland Phlox



*Dryopteris erythrosora 'Brilliance'*  
Autumn Brilliance Fern



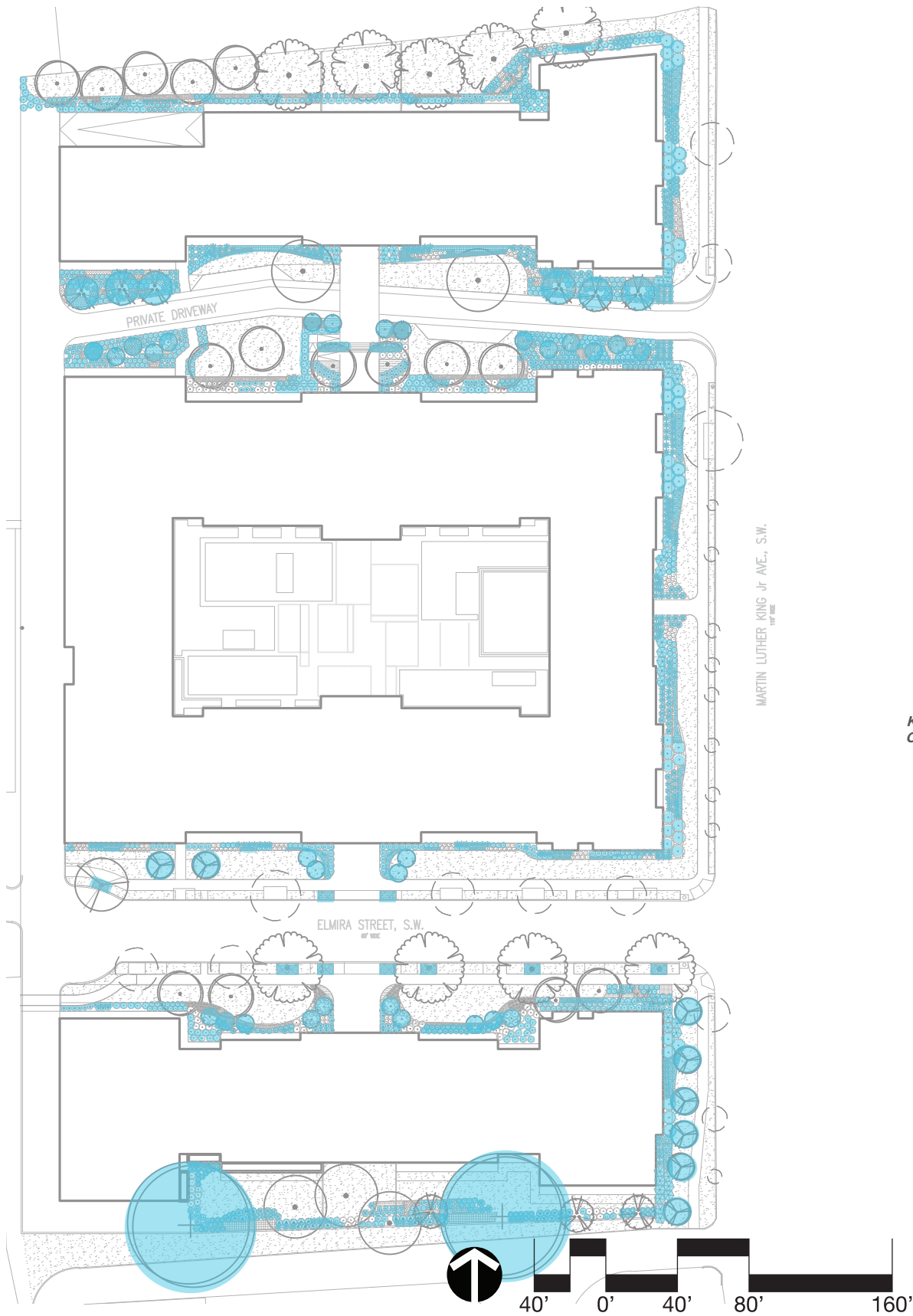
*Athyrium filix-femina*  
Common Lady Fern

Note: Plant list and landscape design are subject to change upon completion of construction drawings, applicable Code review and compliance, and UFA and public space review and permitting (where applicable).



SEASONALITY: WINTER

During winter the perennials and ornamental grasses will be dormant or pruned back. The landscape maintains interest with many evergreen shrubs and grasses that maintain a variety of textures, heights, and forms. The American Sycamore and two varieties of River Birch become sculptural forms in the landscape with beautiful bark textures. The dogwood shrub becomes a center piece with fire red stems exposed. In early winter Daphne is blooming at her best an providing a sweet aroma.



*Betula nigra 'duraheat'*  
River Birch Multi-trunk



*Platanus occidentalis*  
American Sycamore



*Betula nigra 'Little King'*  
Dwarf River Birch



*Daphne odora*  
Winter Daphne



*Sarcococca ruscifolia*  
Fragrant Sweetbox



*Myrica cerifera 'Don's Dwarf'*  
Don's Dwarf Wax Laurel



*Kalmia latifolia 'Olympic Fire'*  
Olympic Fire Mountain Laurel



*Ilex glabra 'Gem Box'*  
Gem Box Inkberry Holly



*Rosmarinus officinalis*  
Rosemary



*Kalmia latifolia 'elf'*  
Elf Dwarf Mountain Laurel



*Prunus laurocerasus 'schipkaensis'*  
Schipka English Laurel



*Ilex glabra 'Compacta'*  
Compact Inkberry



*Cornus sericea 'Kelsey'*  
Kelsey's Dwarf Red Osier Dogwood



*Calamagrostis x acutiflora 'Karl Foerster'*  
Karl Foerster Feather Reed Grass



*Muhlenbergia capillaris 'regal mist'*  
Pink Muhly Grass



*Carex pennsylvanica*  
Pennsylvania sedge


















*Lavandula angustifolia 'Hicote'*  
Hidcote English Lavender

Note: Plant list and landscape design are subject to change upon completion of construction drawings, applicable Code review and compliance, and UFA and public space review and permitting (where applicable).



FOUNDATION PLANTING STRATEGY: SEASONALITY IN LAYERS

1	<i>Carex pennsylvanica</i> Pennsylvania sedge		5	<i>Athyrium filix-femina</i> Lady Fern		9	<i>Phlox divaricata</i> Wild Blue Phlox		13	<i>Dryopteris erythrosora</i> 'Brilliance' Autumn Brilliance Fern	
2	<i>Cornus sericea</i> 'Kelseyi' Kelsey's Dwarf Red Osier Dogwood		6	<i>Sarcococca ruscifolia</i> Fragrant Sweetbox		10	<i>Itea virginica</i> Little Henry Sweetspire		14	<i>Clethra alnifolia</i> <i>Sugartina</i> 'Crystalina' Dwarf Summersweet	
3	<i>Ilex glabra</i> 'Gem Box' Gem Box Inkberry Holly		7	<i>Betula nigra</i> 'Little King' Dwarf River Birch		11	<i>Deschampsia Cespitosa</i> 'Goldtau' Gold Tauf Tufted Hairgrass		15	<i>Prunus l.</i> 'Schipkaensis' Schip Mountain Laurel	
4	<i>Cornus florida</i> Flowering Dogwood		8	<i>Hydrangea quercifolia</i> 'Pee Wee' Pee-Wee Oakleaf Hydrangea		12	<i>Rhus aromatica</i> 'Gro-Low' Gro-Low Fragrant Sumac				





LOBBY VIEW LOOKING WEST



JUNE 21, 2024

LandDesign MARTINS VIEW LLC

LOBBY VIEW LOOKING WEST

**L18**





***Cornus sericea 'Kelsey'***  
**Kelsey Red Twig Dogwood**  
White flowers in late  
spring/early summer



***Cornus florida***  
**Flowering Dogwood**  
White flowers in  
late spring/early summer



***Phlox divaricata***  
**Wild Blue Phlox**  
Cool blue flowers in  
late spring/early summer



***Itea virginica***  
**Little Henry Sweetspire**  
White flowers in late spring/early summer



***Prunus l. 'Schipkaensis'***  
**Schip Mountain Laurel**  
Fragrant white flowers in late  
spring/early summer



SEASONALITY: SUMMER



*Carex pennsylvanica*  
**Pennsylvania sedge**  
Textural variety



*Athyrium filix-femina*  
**Lady Fern**  
Textural variety



*Hydrangea quercifolia* 'Pee Wee'  
**Pee-Wee Oakleaf Hydrangea**  
White flower heads fade to pink



*Phlox divaricata*  
**Wild Blue Phlox**  
Cool blue flowers in late spring/early summer



*Itea virginica*  
**Little Henry Sweetspire**  
White flowers in late spring/early summer



*Clethra alnifolia*  
**Sugartina 'Crystalina'**  
**Dwarf Summersweet**  
Fragrant white flowers that attract butterflies



*Deschampsia Cespitosa* 'Goldtau'  
**Gold Tauf Tufted Hairgrass**  
Textural variety



## SEASONALITY: FALL



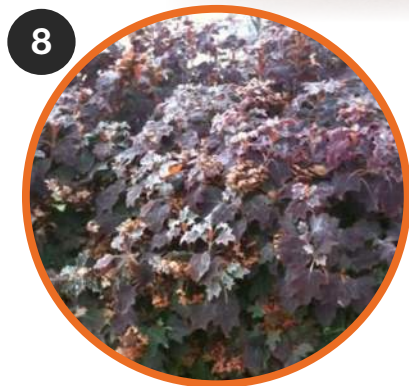
***Carex pennsylvanica***  
Pennsylvania sedge  
Sandy-colored foliage



***Cornus sericea 'Kelsey'***  
Kelsey Red Twig Dogwood  
Red/orange foliage



***Betula nigra 'Little King'***  
Dwarf River Birch  
Bright yellow foliage



***Hydrangea quercifolia 'Pee Wee'***  
Pee-Wee Oakleaf Hydrangea  
Red/purple foliage



***Itea virginica 'Little Henry'***  
Little Henry Sweetpire  
Bright orange/red foliage



***Deschampsia Cespitosa 'Goldtau'***  
Gold Tauf Tufted Hairgrass  
Sandy-colored blades



***Rhus aromatica 'Gro-Low'***  
Gro-Low Fragrant Sumac  
Orange/red foliage



***Clethra alnifolia Sugartina 'Crystalina'***  
Dwarf Summersweet  
Attractive gold/yellow to yellow/brown foliage



***Dryopteris erythrosora 'Brilliance'***  
Autumn Brilliance Fern  
Copper-red fronds turn bright red



LOBBY VIEW: FALL

**L21**

JUNE 21, 2024

MARTINS VIEW LLC **LandDesign**



SEASONALITY: WINTER



*Cornus sericea 'Kelseyi'*  
**Kelsey's Dwarf Red Osier  
Dogwood**  
Bold red stems



*Ilex glabra 'Gem Box'*  
**Gem Box Inkberry Holly**  
Evergreen foliage



*Sarcococca ruscifolia*  
**Fragrant Sweetbox**  
Evergreen foliage, white fragrant  
flowers in winter



*Betula nigra 'Little King'*  
**Dwarf River Birch**  
Textured bark



*Deschampsia Cespitosa 'Goldtau'*  
**Gold Tauf Tufted Hairgrass**  
Plumes "brown out" for interesting  
texture



*Dryopteris erythrosora 'Brilliance'*  
**Autumn Brilliance Fern**  
Semi-evergreen fronds collect  
snow in winter



*Prunus l. 'Schipkaensis'*  
**Schip Mountain Laurel**  
Broadleaf evergreen foliage