



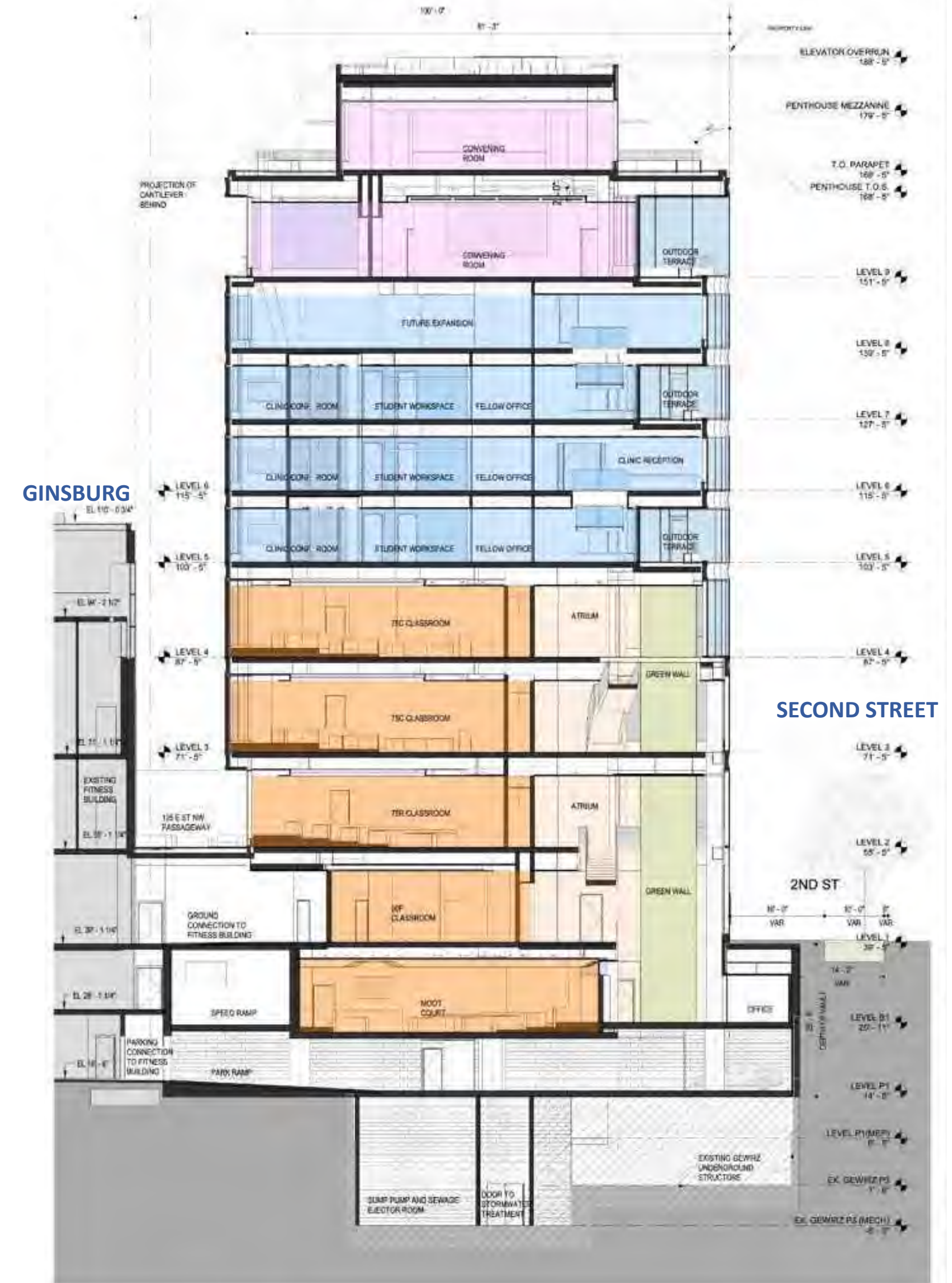
Georgetown University Z.C. Case No. 23-10A

October 28, 2024

Georgetown University New Law Building



Sections



Approved





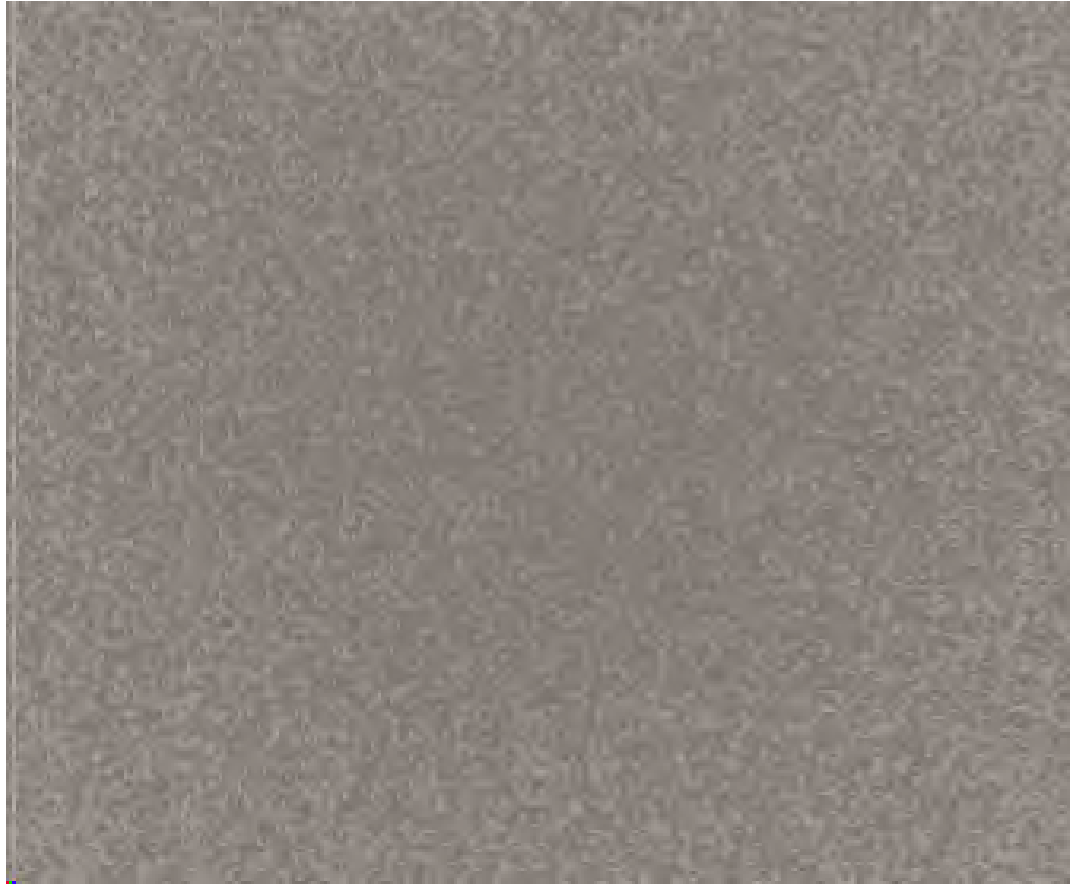
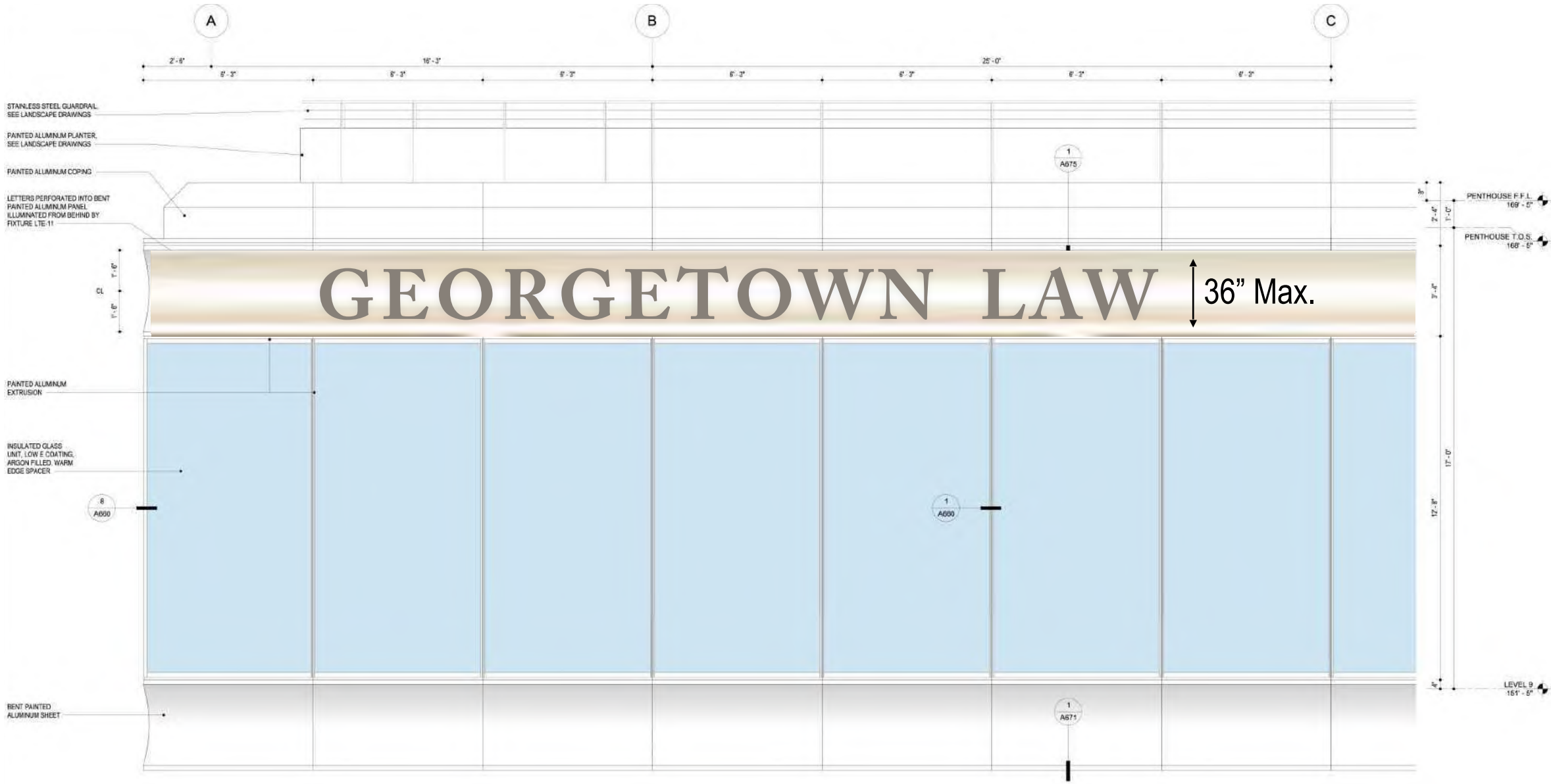
Proposed

Proposed





Content of signage is conceptual only and subject to change



ARCHITECTURAL LIQUID COATING, METALLIC FINISH
MEDIUM GRAY UC51595XL









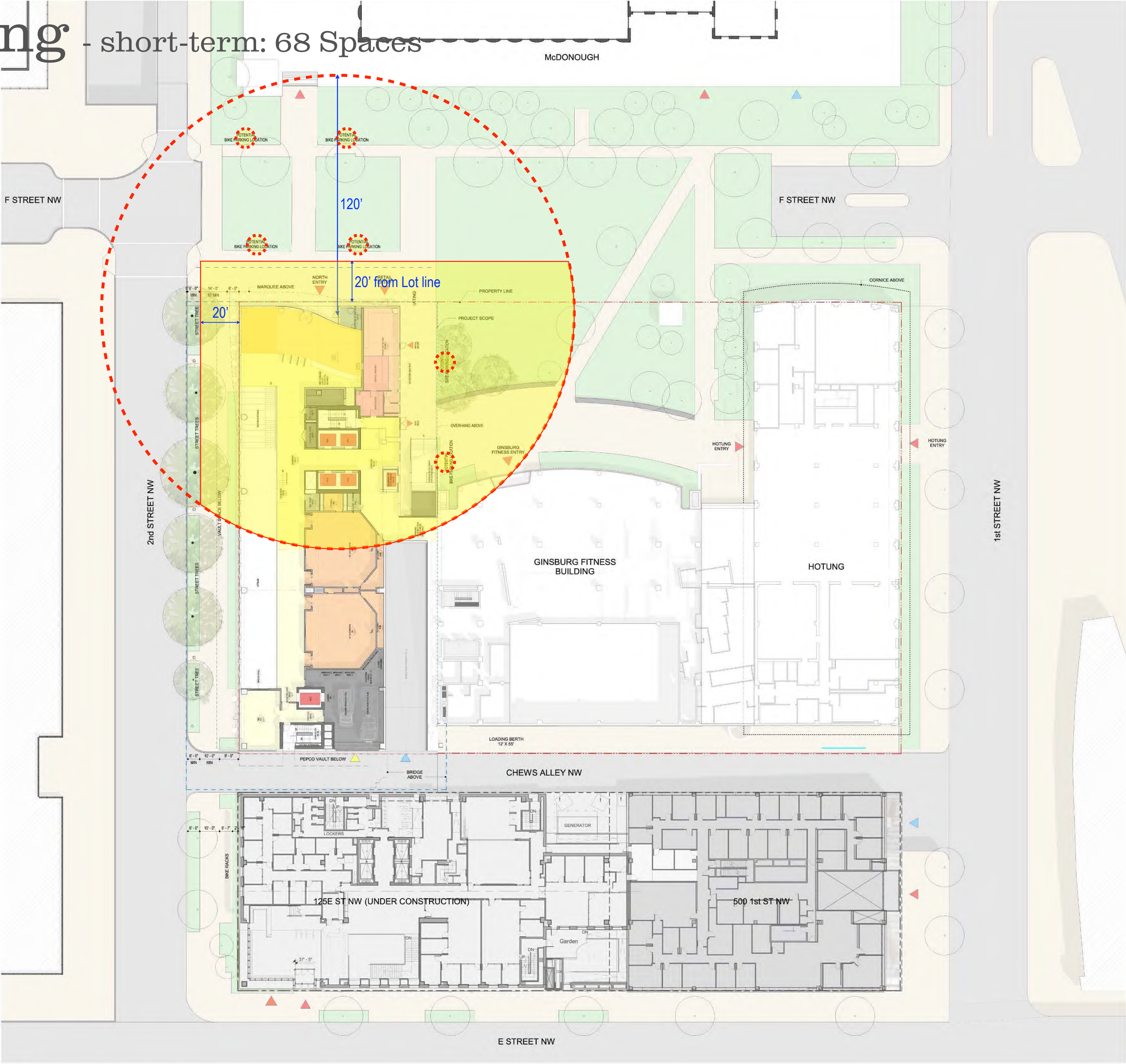
ALUMINUM SPANDREL SCOOP
BRIGHT SILVER UC55028XLB

Bicycle Parking

short-term: 68 Spaces

Graphic Legend

-  Pedestrian Entrance
-  Loading/Delivery Entrance
-  Parking Entrance
-  Street Trees
-  Street Lights
-  Bike Parking (68 = 34 Racks)



Bicycle Parking (Before) -short-term: up to 128 bicycle spaces on serpentine racks

Existing 64 'theoretical capacity' Parking Spaces on the Dean Green



Existing 64 'theoretical capacity' Parking Spaces on the EHN Green

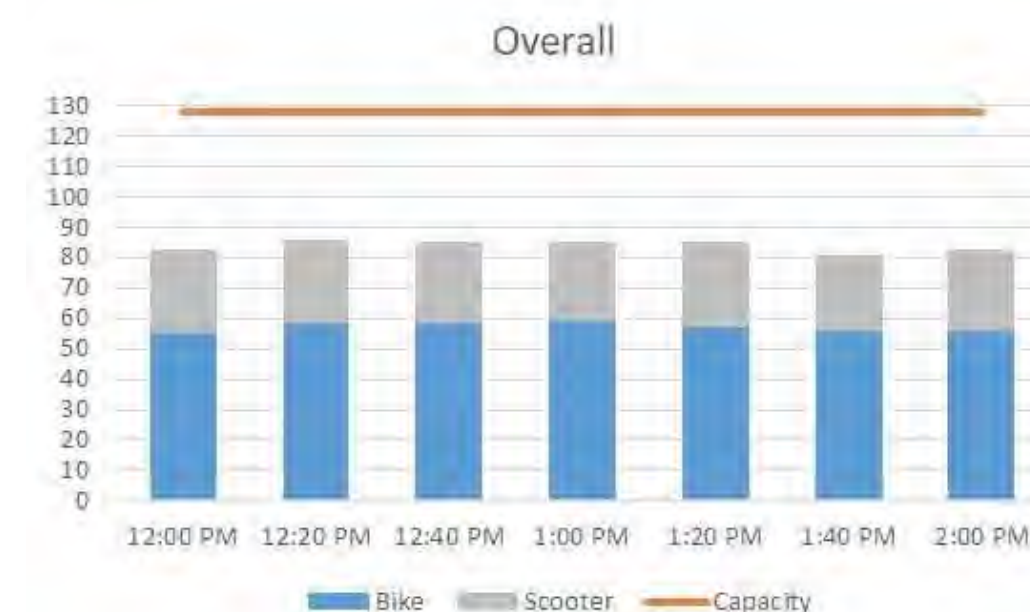
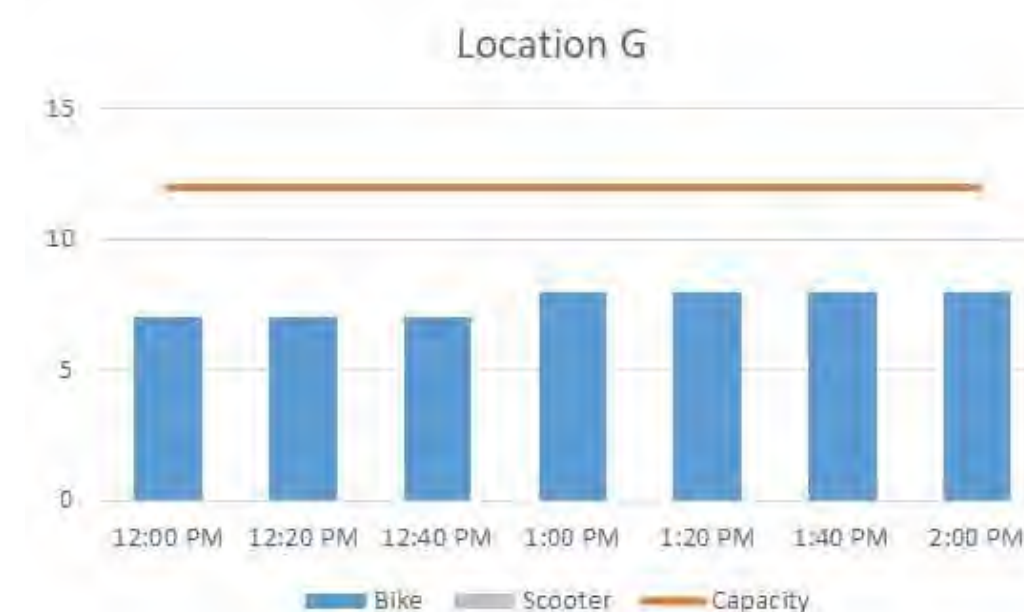
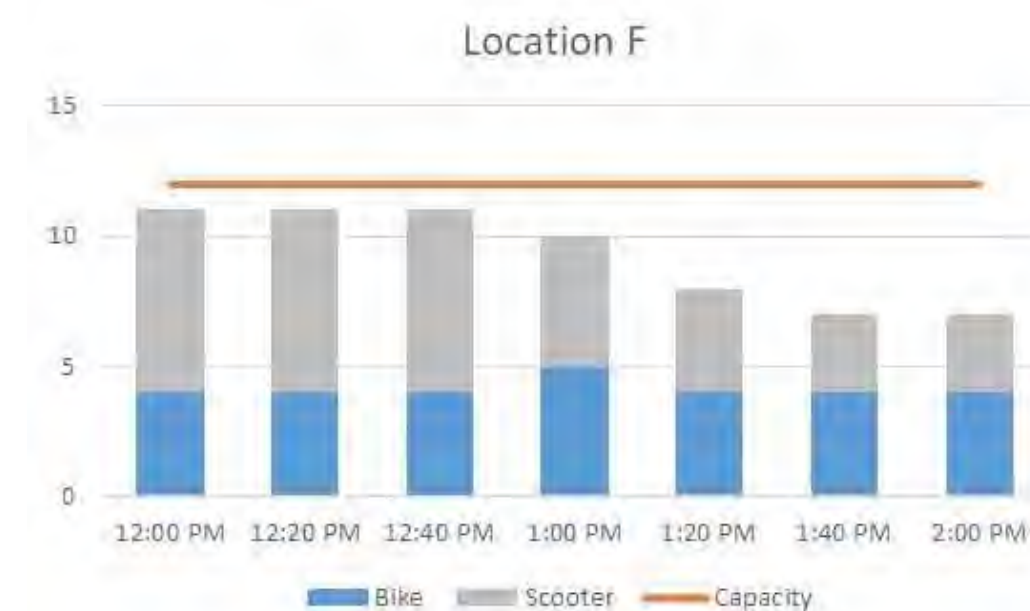
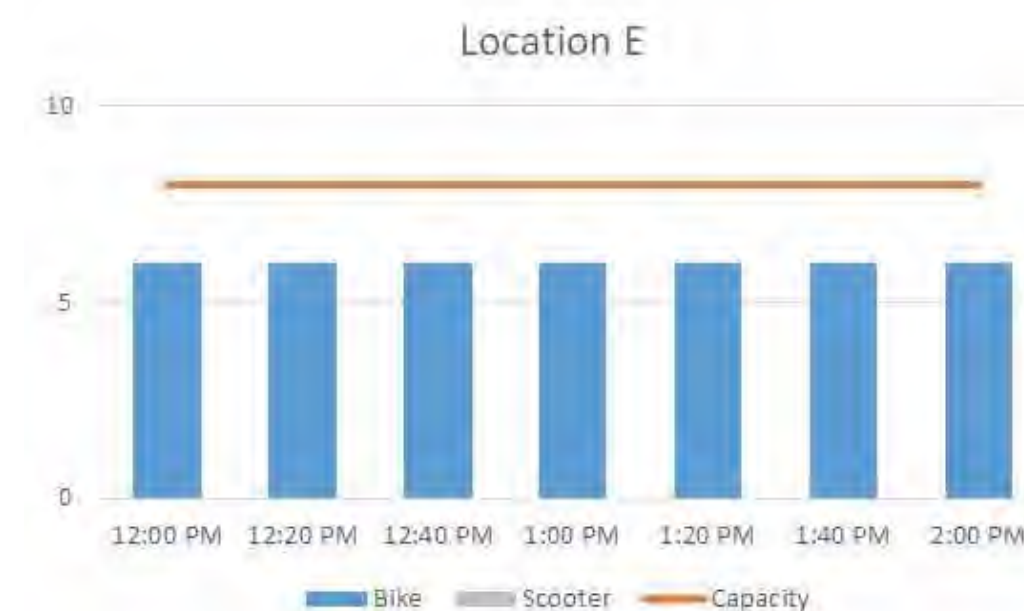
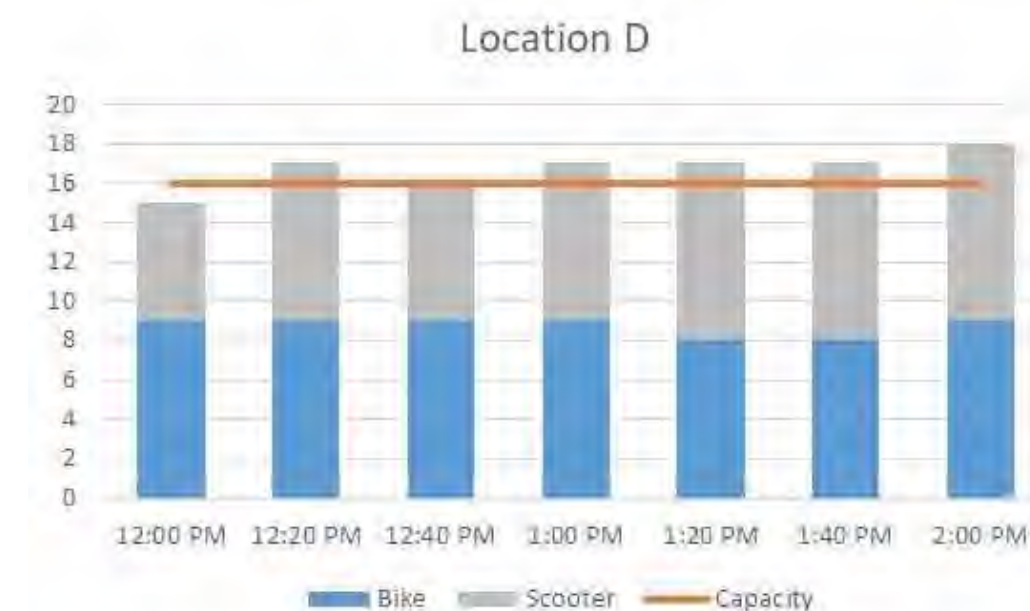


Graphic Legend

- Pedestrian Entrance
- Loading/Delivery Entrance
- Parking Entrance
- Short-term Bike Parking

Plans for the Green are conceptual only
Bike rack locations subject to change

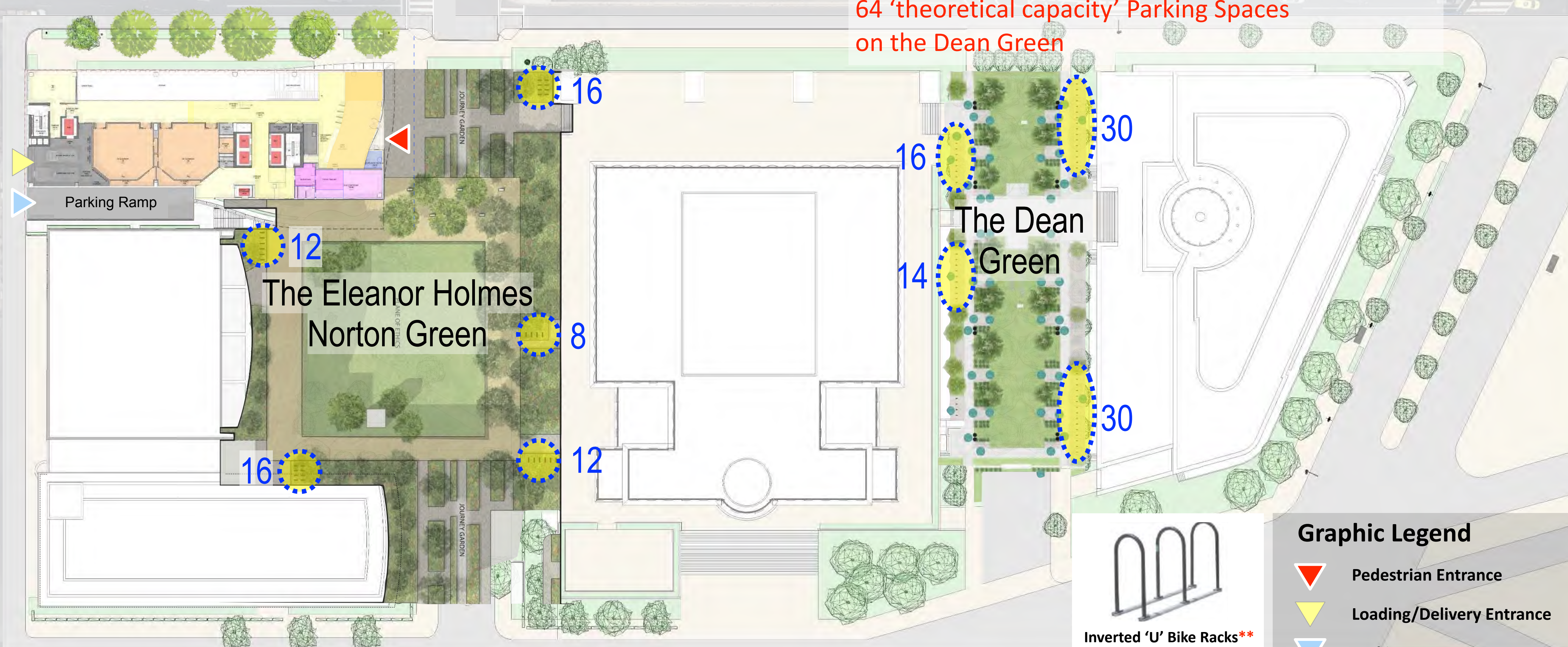
Wells bicycle study



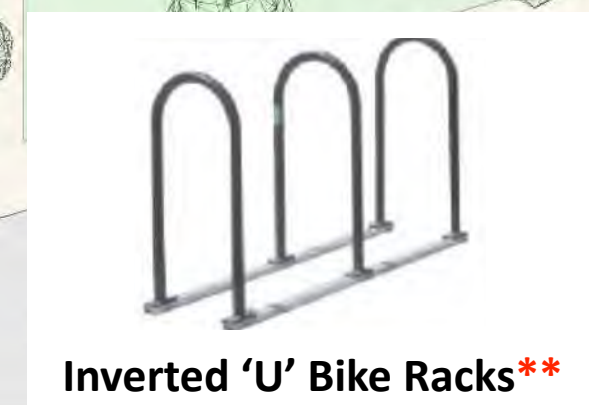
Bicycle Parking (after) -short-term: 154 bicycle spaces* on inverted U racks**

*the location of bike racks is diagrammatic and subject to adjustment based on the final plans for each Green

45 Racks = 90 Spaces Min. to replace existing 64 'theoretical capacity' Parking Spaces on the Dean Green



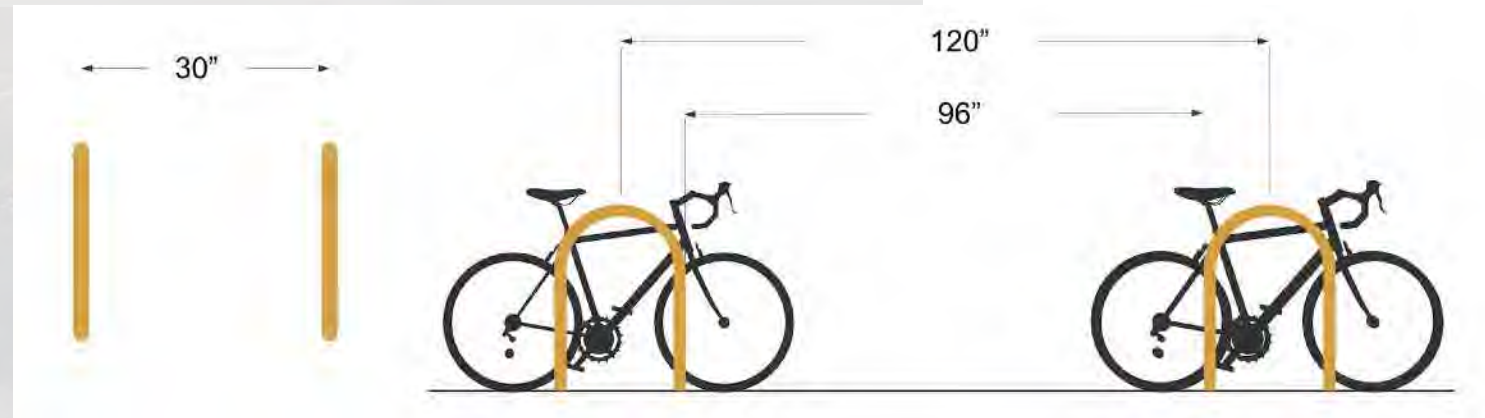
32 Racks = 64 Parking Spaces to replace existing 64 'theoretical capacity' Parking Spaces on the EHN Green



Graphic Legend

- Pedestrian Entrance
- Loading/Delivery Entrance
- Parking Entrance
- Short-term Bike Parking

****Racks to be spaced a minimum of 30" apart and a minimum of 8' between rows**



Capitol Campus Short-Term Bicycle Capacity



55 H Street: 14

111 Mass Ave: 84

Dean Green: 64 existing / 90 proposed

Eleanor Holmes Norton Green: 64

125 E Street: 56

Total Short-term Spaces
282 Existing
314 Proposed

Georgetown University New Law Building

