

EXHIBIT B

Landmark Wesley Seminary																									10/22/2025						
Unit Type	Level	Studio	1 Bedroom			Bedroom	4 Bedrooms								5 Bedrooms				Total	Amenities & Support							Tabulations				
		S1 A	A1 A	A3	A5	B1 A	D1 A	D2	D3	D3 A	D3 B	D4	D5	D6	E1 A	E3	E3 A	E5		Lobby	Amenity	Retail	Loading & Trash	MEP & Services	Parking Area	Parking Count	Gross Building Area	GRSF	NRSF	Efficiency	
Area (SF)		376	490	559	573	756	1,379	989	1,476	1,446	1,030	1,562	1,338	1,454	1,623	1,734	1,623	1,826													
	B2																														
	B1																														
	G	1				3	6	1	1	1	1	1			2	1	1	1	20				691	53,012	142						
	2	1		1		3	6	1	1	1	1	1		1	3	1	1	1	23	3,757	8,966	0	2,126	2,099	51,735	122					
	3	1	2	1	1	5	7	1	1		1	1	1	1	5	1	2	1	32												
	4	1	2		1	4	5	1	1		1			1	4	1	1		23				778								
	5																		0				695								
	6																						0								
Balcony						X	X	X	X	X	X	X	X	X	X	X	X	X													
Unit Total per Type		7	10	4	5	29	43	7	7	2	7	5	3	6	28	7	10	5	185	3757	8966	0	2126	9096	104747	264	389,448	260,756	224,411	78.8%	
Unit Count		7	14		5	29	80								50				185								381,878	Total Site Area	8.77	Acres	
Bed Count		7	14		10	58	320								250				659								113,758	Site Area	2.61	Acres	
GRSF by Type																			260,756								70.8	Density	=	Total units / Acreage	
GRSF Avg. Unit																			1,409								0.41	Lot Coverage	=	Ground Floor/Site Area	
Bed Mix		1.06%	2.12%	1.52%		8.80%	48.56%								37.94%				100.0%								281,911	GFA	=	GBA – Cellar Parking Area	
																											1.03	FAR	=	GFA / Total Site Area	



PARKING SCHEDULE	
PARKING	COUNT
8' x 16' - 90 deg - compact	59
9'-0" x 18' - 90 deg - accessible	5
9'-0" x 18' - 90 deg - standard	156
9'-0" x 18' - 90 deg - van accessible	2
TOTAL PARKING	264

- ACCESSIBLE PARKING SPACES

- *REQUIRED: 7
- PROVIDED: 7 (TWO VAN-ACCESSIBLE SPACE)

***FOR EVERY SIX OR FRACTION OF SIX ACCESSIBLE PARKING SPACES, AT LEAST ONE SHALL BE A VAN-ACCESSIBLE PARKING SPACE**

BUILDING PROGRAM USE AREA SUMMARY 2	
PROGRAM USE	AREA
CIRCULATION	528.94 SF
PARKING	51235.49 SF
SERVICES	639.55 SF
TOTAL	52403.98 SF

ARCHITECTURAL KEYNOTES

FLOOR PLAN GENERAL NOTES

1. IF A WALL, FLOOR, OR ROOF ASSEMBLY SUBSTITUTION IS REQUESTED, PROVIDE A TESTED ASSEMBLY MATCHING OR EXCEEDING REQUIREMENTS OF THOSE SHOWN IN THE DOCUMENTS
2. PROVIDE BLOCKING AND BACKER SUPPORT FOR WALL-MOUNTED AND/OR CEILING-MOUNTED HARDWARE, EQUIPMENT, AND ACCESSORIES.

DIMENSIONING / LAYOUT NOTES

1. DIMENSIONS ARE TAKEN TO: (UNLESS NOTED OTHERWISE):
 - THE CENTER LINE OF STUD AT INTERIOR WALLS
 - THE FACE OF GYPSUM BOARD AT CORRIDOR WALLS (GRID AT CORRIDOR SIDE)
 - THE CENTERLINE OF UNIT SEPARATION WALLS (GRID AT CENTERLINE)
 - THE OUTSIDE FACE OF SHEATHING AT EXTERIOR WALLS WITH SIDING OR MASONRY VENEER, FACE OF MASONRY AT STRUCTURAL MASONRY EXTERIOR WALLS
 - THE FACE OF INTERIOR CMU WALLS.
2. VERIFY ALL GRADES WITH CIVIL DRAWINGS.
3. REFER TO A900 SERIES FOR OPENING INFORMATION.

GENERAL CONSTRUCTION NOTES

1. BLOCKING AND FASTENING REQUIREMENTS OF WALL ASSEMBLY LISTED MAY VARY FROM STRUCTURAL DRAWINGS AND SPECIFICATIONS.
2. PROVIDE CONSTRUCTION DETAIL TO MEET THE MORE RESTRICTIVE REQUIREMENT. SEE STRUCTURAL DRAWINGS FOR ADDITIONAL INFORMATION.
3. CONCRETE SHALL OBTAIN TESTED ASSEMBLIES NOTED FOR REQUIRED GYPSUM BOARD ORIENTATION, NAILING/SCREW TAPPING, MUD JGCS, ETC. G.C. TO PROVIDE TEST NUMBER WITH FIRE RATINGS, STC & IBC TESTS & IBC TESTS FOR SOUND RATING. PROVIDE TEST NUMBER WITH FIRE RATINGS, FLOOR-CEILING ASSEMBLIES, ROOF-CEILING ASSEMBLIES, AND OTHERS.
4. ALL SHIRT WALLS TO CONTINUOUSLY EXTEND TO UNDERSIDE OF DECK.
5. STAIR ELEVATOR DOOR SHALL CONTINUOUSLY EXTEND TO UNDERSIDE OF DECK. DO NOT PENETRATE STAIR & ELEVATOR FIRE RATING MEMBRANE PROTECTION UNLESS SERVING STAIR & ELEVATOR ENCLOSURE.
6. FINISH FLOOR ELEVATION CHANGE AT DOORS & FLOOR ELEVATION NOT TO EXCEED 1/4".
7. ALL DOOR OPENINGS IN COMMON AREAS TO BE 32" CLR. MIN. WITH DOOR IN OPEN POSITION.
8. COMMON AREA DOOR CLEARANCES & APPROACHES PER 2017 CBCB AND ANS A117.1.
9. DO NOT SCALE DRAWINGS.
10. PROVIDE SUMMARY OF SCHED #1210 FOR CONSTRUCTION TYPE AND ALLOWABLE BUILDING MATERIALS.
11. PROVIDE BLOCKING/BACKER SUPPORT FOR WALL AND CEILING MOUNTED EQUIPMENT, ELEVATOR ENCLOSURES.
12. REMOVE DEBRIS AND CLEAN ALL AREAS RECEIVING SEALANTS FOR MAXIMUM ADHESION & PERFORMANCE.
13. CONFORM TO 603 FOR ALLOWABLE COMBUSTIBLE MATERIALS IN TYPE I CONSTRUCTION.

GENERAL WALL TYPE NOTES

1. REFER TO THE STRUCTURAL DRAWING FOR LOCATIONS AND SPECIAL REQUIREMENTS FOR STUD SPACING ON ALL BEARING WALL ASSEMBLIES
2. REFER TO THE STRUCTURAL DRAWING FOR SHEAR AND BEARING WALLS CONSTRUCTION REQUIREMENTS.
3. REFER TO STRUCTURAL DRAWINGS FOR CONCRETE AND MASONRY WALL SECTION DETAILS.
4. REFER TO GENERAL NOTES ON STRUCTURAL DRAWINGS FOR PANEL FASTENING AND BLOCKING REQUIREMENTS FOR CORRIDOR AND UNIT SEPARATION WALLS.
5. ALL ASSEMBLY RATINGS LISTED ARE ACHIEVABLE RATINGS. REFER TO CODE SUMMARY AND CODE PLANS FOR RATED WALL LOCATIONS.
6. PROVIDE INTERIOR FINISHES TO MEET FIRE RESISTANCE (FRT) REQUIREMENTS.
7. USE MOISTURE RESISTANT GYP BD. AT BATHROOMS AND TOILET ROOMS.
8. PROVIDE ADDITIONAL LAYER OF MOISTURE RESISTANT GYP BD. TO CONCEAL ANY REINFORCING CAGES.
9. EXTERIOR WALL ASSEMBLIES SHALL BE AIRTIGHT, HARLINE CRACKS AND SMALL HOLES ARE NOT ALLOWED.
10. PROVIDE SOUND BARRIER IN UNIT BATHROOMS FOR GRAB BARS AND ACCESSIBLE FIXTURE MOUNTINGS. SEE SHEET G140.
11. RECEIVED WALL FIXTURES SUCH AS OUTLETS AND OTHER ITEMS WHICH PENETRATE THROUGH THE GYPSUM BOARD SURFACES SHALL NOT BE LOCKED BACK TO BACK IN SAME WALL CAVITY.
12. ANY OPENING CUT IN GYPSUM BOARD FOR INSTALLATION OF PENETRATING FIXTURES SHALL BE CUT CAREFULLY TO SIZE AND CAULKED AT UNIT PERIMETER WITH INSULANT. PROVIDE PROTECTIVE COVER AND SHIELD PROVIDE INTUMESECENT PUTTY (PUTTY PADS) AROUND RECEPTACLES AND OTHER ELECTRICAL BOXES. COORDINATE WITH ELECTRICAL.
13. PROVIDE JOINTS BETWEEN GYPSUM BOARD SHEETS TO BE CONTROLLED MEMBRANE AT OUTSIDE OF SHEATHING BEFORE FINISH MATERIAL IS APPLIED.
14. COORDINATE USE OF MATERIAL WHEN GYP. BD. IS EXPOSED TO WEATHER. PROVIDE PROTECTIVE COVERING TO PREVENT DAMAGE TO WEATHERED INSULATE GAPS AT FRAMING BETWEEN WINDOWS, DOORS, AND OTHER RELATED ITEMS. SEE MANUFACTURER'S RECOMMENDATION FOR TYPE OF PROTECTIVE COVER OR FLASHING.
15. SEE 2017 CBC SECTION 705 AND TABLE 602 FIRE RATING REQUIREMENTS FOR EXTERIOR WALL EXPOSURE.
16. REFER TO 4000 SERIES (CONCRETE/CORRUGATED ASSEMBLIES) FOR WALL TYPES.
17. REFER TO 4200 SERIES (UNIT PLANS) FOR UNIT WALL TYPES.
18. TYPICAL WALL TYPES ARE AS FOLLOWS:
 - FOR SEPARATION WALLS: WALL TYPE = X SERIES (UNLESS NOTED OTHERWISE).
 - FOR CORRIDOR WALLS: WALL TYPE = X SERIES (UNLESS NOTED OTHERWISE).
 - FOR ELEVATOR / STAR WALLS: WALL TYPE = X SERIES (UNLESS NOTED OTHERWISE).
 - FOR NEIGHBORING INTERIOR UNIT WALLS: WALL TYPE = I SERIES (UNLESS NOTED OTHERWISE).
 - FOR INTERIOR WALLS AT PARKING LEVEL: WALL TYPE = X SERIES



Architecture
Interior Design
Landscape Architecture
Engineering

1054 31st Street NW
Canal Square
Suite 410
Washington, DC
20007
202.595.3173

www.bkvgroup.com

CONSULTANTS

PROJECT TITLE

The Standard at
Wesley -
Washington, DC

ISSUE #	DATE	DESCRIPTION
	08/22/2023	100% SD SET
	09/26/2023	50% DD SET

CERTIFICATION

NOT FOR
CONSTRUCTION

DRAWN BY	Author
CHECKED BY	Checker
COMMISSION NUMBER	1870-20

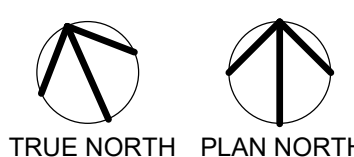
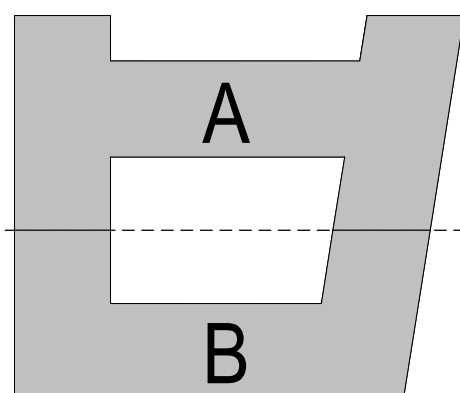
SHEET TITLE

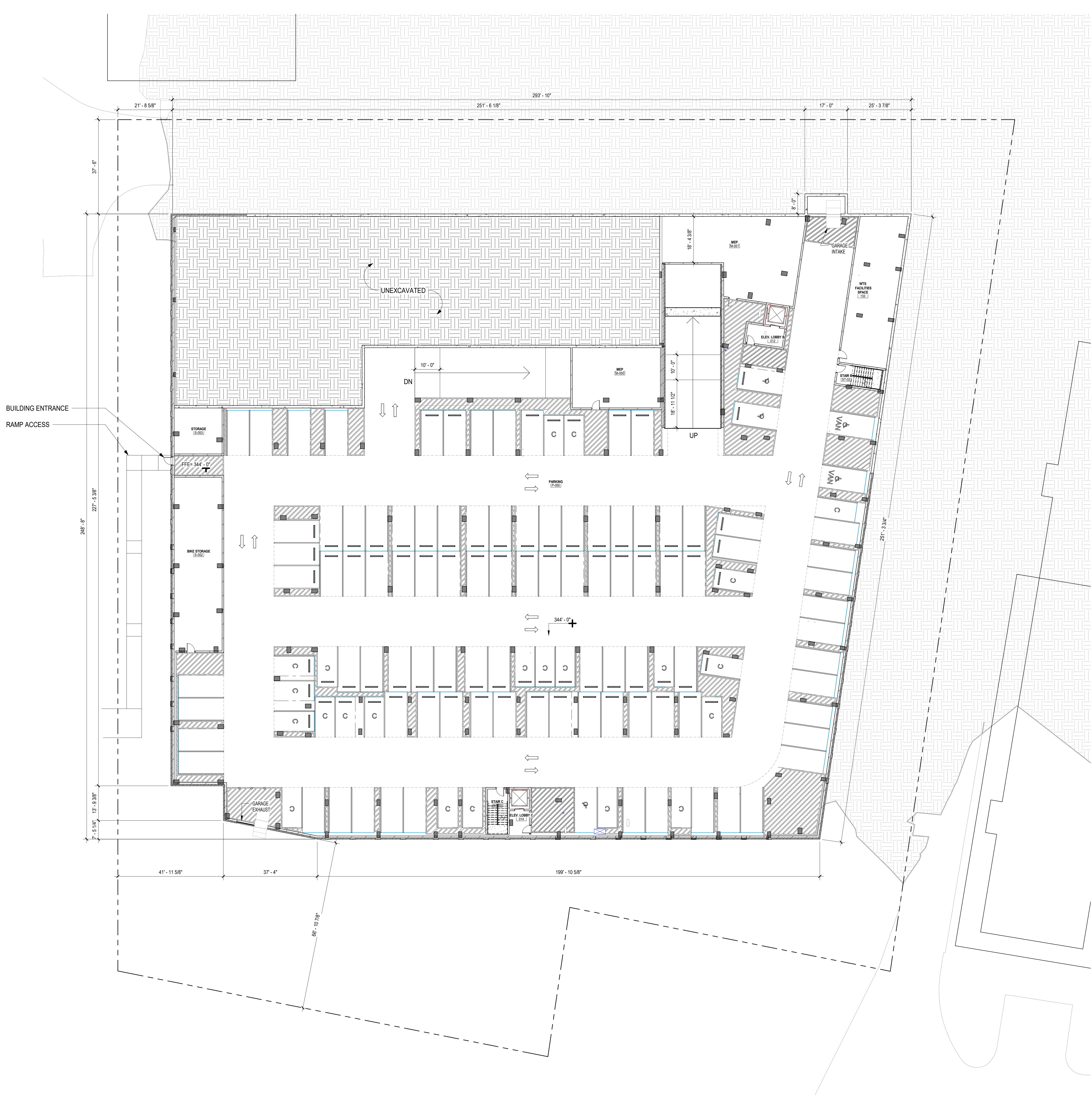
LEVEL P2 -
OVERALL FLOOR
PLAN

SHEET NUMBER

A098

© 2021 BKV Group





PARKING SCHEDULE	
PARKING	COUNT
8' x 15' - 50 deg - compact	59
9' 0" x 15' - 50 deg - accessible	5
9' 0" x 15' - 50 deg - standard	198
9' 0" x 15' - 50 deg - van accessible	2
TOTAL PARKING	264

• ACCESSIBLE PARKING SPACES

- *REQUIRED: 7
- PROVIDED: 7 (TWO VAN-ACCESSIBLE SPACE)

***FOR EVERY SIX OR FRACTION OF SIX ACCESSIBLE PARKING SPACES, AT LEAST ONE SHALL BE A VAN-ACCESSIBLE PARKING SPACE**

BUILDING PROGRAM USE AREA SUMMARY 2	
PROGRAM USE	AREA
CIRCULATION	0.00 SF
MEP	492.00 SF
PARKING	6041.94 SF
SERVICES	2802.46 SF
TOTAL	66086.50 SF

ARCHITECTURAL KEYNOTES

FLOOR PLAN GENERAL NOTES

- IF A WALL, FLOOR, OR ROOF ASSEMBLY SUBSTITUTION IS REQUESTED, PROVIDE A TESTED ASSEMBLY MATCHING OR EXCEEDING REQUIREMENTS OF THOSE SHOWN IN THE DOCUMENTS.
- PROVIDE BLOCKING AND BACKER SUPPORT FOR WALL-MOUNTED AND/OR CEILING-MOUNTED HARDWARE, EQUIPMENT, AND ACCESSORIES.

DIMENSIONING / LAYOUT NOTES

- DIMENSIONS ARE TAKEN TO: (UNLESS NOTED OTHERWISE):
 - THE CENTER LINE OF STUD AT INTERIOR WALLS
 - THE FACE OF GYPSUM BOARD AT CORRIDOR WALLS (GRID AT CORRIDOR SIDE)
 - THE CENTERLINE OF UNIT SEPARATION WALLS (GRID AT CENTERLINE)
 - THE OUTSIDE FACE OF SHEATHING AT EXTERIOR WALLS WITH SIDING OR MASONRY VENEER, FACE OF MASONRY AT STRUCTURAL MASONRY EXTERIOR WALLS
 - THE FACE OF INTERIOR CMU WALLS
- VERIFY ALL GRADES WITH CIVIL DRAWINGS.
- REFER TO A500 SERIES FOR OPENING INFORMATION.

GENERAL CONSTRUCTION NOTES

- BLOCKING AND FASTENING REQUIREMENTS OF WALL ASSEMBLY LISTED NUMBER MAY VARY FROM STRUCTURAL DRAWINGS AND SPECIFICATIONS. WALLS TO BE CONSTRUCTED TO MEET THE MORE RESTRICTIVE REQUIREMENT. SEE STRUCTURAL DRAWINGS FOR ADDITIONAL INFORMATION.
- CONTRACTOR TO OBTAIN TESTED ASSEMBLIES NOTED FOR REQUIRED GYPSUM BOARD ORIENTATION, NAILING/SCREW, TAPING, MUD, BLOCKING, ETC. G.C. TO PROVIDE TEST NUMBERS WITH FIRE RATINGS: STC 8 IIC (STC 8 IIC - 50 MIN AT UNITS) FOR PROPRIETARY SUBSTITUTION OF WALL ASSEMBLIES.
- FLOOR-CEILING ASSEMBLIES, ROOF-CEILING ASSEMBLIES, AND OTHERS: ALL SHAFT WALLS TO CONTINUOUSLY EXTEND TO UNDERSIDE OF DECK.
- ALL STAIR & ELEVATOR ENCLOSURES TO CONTINUOUSLY EXTEND TO UNDERSIDE OF DECK. DO NOT PENETRATE STAIR & ELEVATOR FIRE RATING MEMBRANE PROTECTION UNLESS SERVING STAIR & ELEVATOR ENCLOSURE. FINISH FLOOR ELEVATION CHANGE AT DOORS & FLOORING MATERIAL NOT TO EXCEED 1/2" U.N.O.
- ALL DOOR OPENINGS IN COMMON AREAS TO BE 32" CLR. MIN. WITH DOOR IN OPEN POSITION.
- COMMON AREA DOOR CLEARANCES & APPROACHES PER 2017 DCBC AND ANSI A117.1.
- DO NOT SCALE DRAWINGS.
- SEE CODE SUMMARY ON SHEET G120 FOR CONSTRUCTION TYPE AND ALLOWABLE BUILDING MATERIAL.
- PROVIDE BLOCKING/BACKER SUPPORT FOR WALL AND CEILING MOUNTED HARDWARE, EQUIPMENT, AND ACCESSORIES.
- REMOVE DEBRIS AND CLEAN ALL AREAS RECEIVING SEALANTS FOR MAXIMUM ADHESION / PERFORMANCE.
- SEE 2017 DCBC SECTION 603 FOR ALLOWABLE COMBUSTIBLE MATERIALS IN TYPE I CONSTRUCTION.

GENERAL WALL TYPE NOTES

- REFER TO THE STRUCTURAL DRAWING FOR LOCATIONS AND SPECIAL REQUIREMENTS FOR STUD SPACING ON ALL BEARING WALL ASSEMBLIES.
- REFER TO STRUCTURAL DRAWINGS FOR SHEAR AND BEARING WALLS CONSTRUCTION REQUIREMENTS.
- REFER TO STRUCTURAL DRAWINGS FOR CONCRETE AND MASONRY WALL REINFORCING.
- REFER TO GENERAL NOTES ON STRUCTURAL DRAWINGS FOR PANEL FASTENING AND BLOCKING REQUIREMENTS FOR CORRIDOR AND UNIT SEPARATION WALLS.
- ALL ASSEMBLY RATINGS LISTED ARE ACHIEVABLE RATINGS. REFER TO CODE SUMMARY AND CODE PLANS FOR RATED WALL LOCATIONS.
- WOOD IN CONTACT WITH CONCRETE TO BE TREATED WOOD (PPT).
- USE MOISTURE RESISTANT GYP. BD. AT BATHROOMS AND TOILET ROOMS.
- PROVIDE ADDITIONAL LAYER OF MOISTURE RESISTANT GYP. BD. TO CONCEAL TUB FLANGE WHERE OCCURS.
- EXTERIOR WALL ASSEMBLIES SHALL BE AIRTIGHT, HAIRLINE CRACKS AND SMALL HOLES ARE NOT ALLOWED.
- PROVIDE CONTINUOUS BLOCKING IN UNIT BATHROOMS FOR GRAB BARS AND ACCESSIBLE FIXTURE MOUNTINGS. SEE SHEET G140.
- RECESSED WALL FIXTURES SUCH AS OUTLETS AND OTHER ITEMS WHICH PERFORATE THE GYPSUM BOARD SURFACES SHALL NOT BE LOCATED BACK TO BACK IN THE SAME WALL CAVITY.
- ANY OPENING CUT IN GYPSUM BOARD FOR INSTALLATION OF PENETRATING FIXTURES SHALL BE CUT CAREFULLY TO SIZE AND CAULKED AT UNIT SEPARATION WALLS. INSULATE BACKSIDE OF RECEPTACLES AND PROVIDE INTUMESCENT WRAP (PUTTY PACKS) AROUND RECEPTACLES AND OTHER ELECTRICAL BOXES. COORDINATE WITH ELECTRICAL.
- PROVIDE SEALED JOINTS ON EXTERIOR MOISTURE CONTROL MEMBRANE AT OUTSIDE OF SHEATHING BEFORE FINISH MATERIAL IS APPLIED.
- COORDINATE USE OF MATERIAL WHEN GYP. BD. IS EXPOSED TO WEATHER DURING CONSTRUCTION (EXAMPLE: ELEVATOR AND STAIR SHAFTS).
- INSULATE GAPS AT FRAMING BETWEEN EXTERIOR WINDOWS, DOORS, AND OTHER RELATED ITEMS. SEE MANUFACTURER'S RECOMMENDATION FOR TYPE OF INSULATION (FOAM OR BATT) TO BE USED.
- SEE 2017 DCBC SECTION 703 AND TABLE 602 FIRE RATING REQUIREMENTS FOR EXTERIOR WALL EXPOSURE.
- REFER TO A600 SERIES (CONSTRUCTION ASSEMBLIES) FOR WALL TYPES.
- REFER TO A200 SERIES (UNIT PLANS) FOR UNIT WALL TYPES.
- TYPICAL WALL TYPES ARE AS FOLLOWS:
 - FOR UNIT SEPARATION WALLS: WALL TYPE = 'X' SERIES (UNLESS NOTED OTHERWISE)
 - FOR CORRIDOR WALLS: WALL TYPE = 'X' SERIES (UNLESS NOTED OTHERWISE)
 - FOR ELEVATOR / STAIR WALLS: WALL TYPE = 'X' SERIES (UNLESS NOTED OTHERWISE)
 - FOR NON-BEARING INTERIOR UNIT WALLS: WALL TYPE = 'X' SERIES
 - FOR INTERIOR WALLS AT PARKING LEVEL: WALL TYPE = 'X' SERIES

CONSULTANTS

PROJECT TITLE

The Standard at
Wesley -
Washington, DC

ISSUE #	DATE	DESCRIPTION
	08/22/2023	100% SD SET
	09/26/2023	50% DD SET

CERTIFICATION

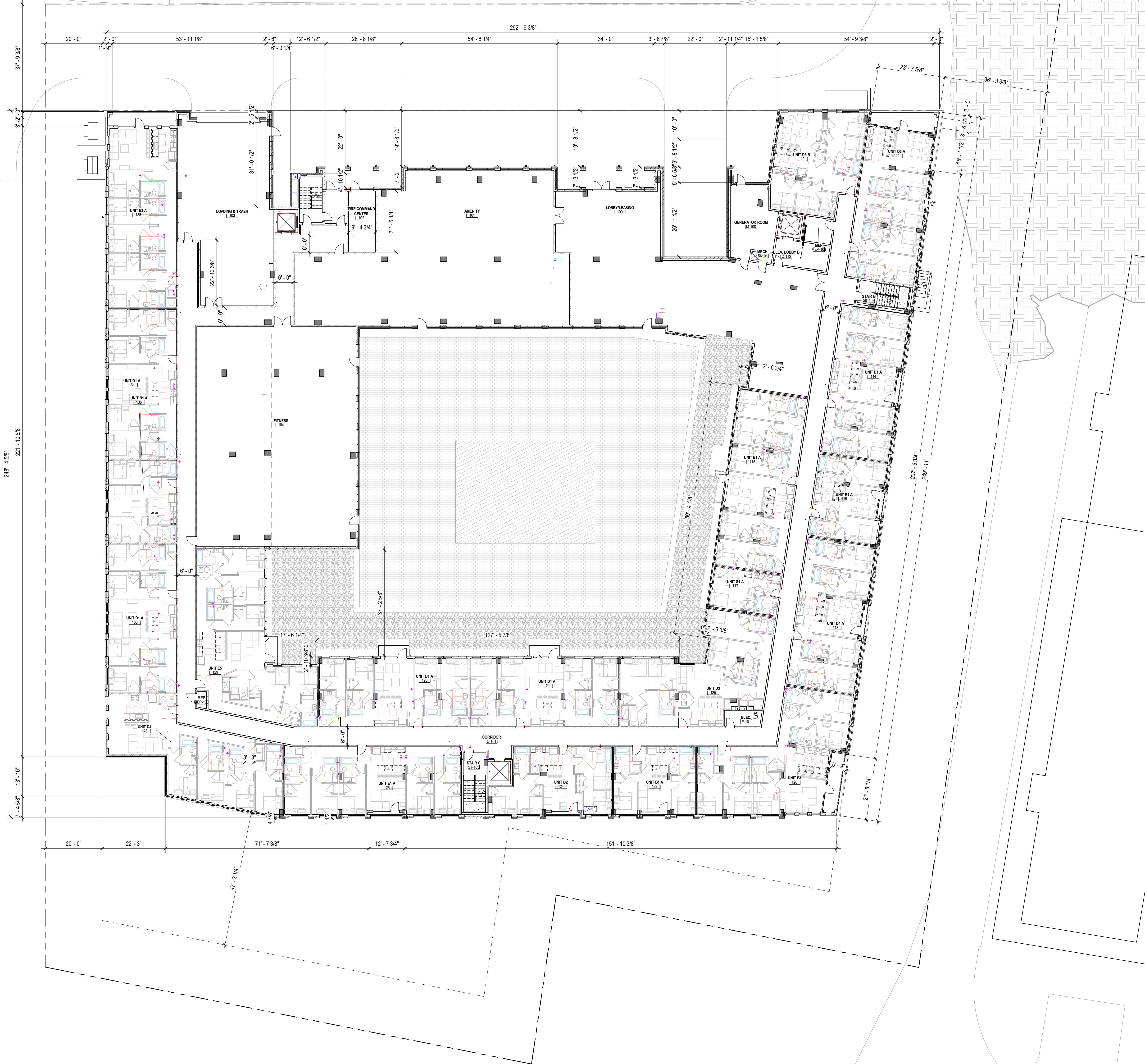
DRAWN BY	Author
CHECKED BY	Checker
COMMISSION NUMBER	1870-20

SHEET TITLE

LEVEL P1 -
OVERALL FLOOR
PLAN

SHEET NUMBER

A099



ARCHITECTURAL KEYNOTES

FLOOR PLAN GENERAL NOTES

- IF A WALL, FLOOR, OR ROOF ASSEMBLY SUBSTITUTION IS REQUESTED, PROVIDE A TESTED ASSEMBLY MATCHING OR EXCEEDING REQUIREMENTS OF THOSE SHOWN IN THE DOCUMENTS.
- PROVIDE BLOCKING AND BACKER SUPPORT FOR WALL-MOUNTED AND/OR CEILING-MOUNTED HARDWARE, EQUIPMENT, AND ACCESSORIES.

DIMENSIONING / LAYOUT NOTES

- DIMENSIONS ARE TAKEN TO: (UNLESS NOTED OTHERWISE):
 - THE CENTER LINE OF STUD AT INTERIOR WALLS
 - THE FACE OF GYPSUM BOARD AT CORRIDOR WALLS (GRID AT CORRIDOR SIDE)
 - THE CENTERLINE OF UNIT SEPARATION WALLS (GRID AT CENTERLINE)
 - THE OUTSIDE FACE OF SHEATHING AT EXTERIOR WALLS WITH SIDING OR MASONRY VENEER, FACE OF MASONRY AT STRUCTURAL MASONRY EXTERIOR WALLS
 - THE FACE OF INTERIOR CMU WALLS
- VERIFY ALL GRADES WITH CIVIL DRAWINGS.
- REFER TO A600 SERIES FOR OPENING INFORMATION.

GENERAL CONSTRUCTION NOTES

- BLOCKING AND FASTENING REQUIREMENTS OF WALL ASSEMBLY LISTED NUMBER MAY VARY FROM STRUCTURAL DRAWINGS AND SPECIFICATIONS. WALLS TO BE CONSTRUCTED TO MEET THE MORE RESTRICTIVE REQUIREMENT. SEE STRUCTURAL DRAWINGS FOR ADDITIONAL INFORMATION.
- CONTRACTOR TO OBTAIN TESTED ASSEMBLIES NOTED FOR REQUIRED GYPSUM BOARD ORIENTATION, NAILING/SCREW, TAPING, MUD, BLOCKING, ETC. TO PROVIDE TEST NUMBERS WITH FIRE RATINGS: STC 8 IIC (STC 8 I IC - 50 MIN AT UNITS) FOR PROPRIETARY SUBSTITUTION OF WALL ASSEMBLIES.
- ALL SHAFT WALLS TO CONTINUOUSLY EXTEND TO UNDERSIDE OF DECK.
- ALL STAIR & ELEVATOR ENCLOSURES TO CONTINUOUSLY EXTEND TO UNDERSIDE OF DECK. DO NOT PENETRATE STAIR & ELEVATOR FIRE RATING MEMBRANE PROTECTION UNLESS SERVING STAIR & ELEVATOR ENCLOSURE. FINISH FLOOR ELEVATION CHANGE AT DOORS & FLOORING MATERIAL NOT TO EXCEED 1/2" U.O.
- ALL DOOR OPENINGS IN COMMON AREAS TO BE 32" CLR. MIN. WITH DOOR IN OPEN POSITION.
- COMMON AREA DOOR CLEARANCES & APPROACHES PER 2017 DCBC AND ANSI A117.1.
- DO NOT SCALE DRAWINGS.
- SEE CODE SUMMARY ON SHEET G120 FOR CONSTRUCTION TYPE AND ALLOWABLE BUILDING MATERIAL.
- PROVIDE BLOCKING/BACKER SUPPORT FOR WALL AND CEILING MOUNTED HARDWARE, EQUIPMENT, AND ACCESSORIES.
- REMOVE DEBRIS AND CLEAN ALL AREAS RECEIVING SEALANTS FOR MAXIMUM ADHESION / PERFORMANCE.
- SEE 2017 DCBC SECTION 603 FOR ALLOWABLE COMBUSTIBLE MATERIALS IN TYPE I CONSTRUCTION.

GENERAL WALL TYPE NOTES

- REFER TO THE STRUCTURAL DRAWING FOR LOCATIONS AND SPECIAL REQUIREMENTS FOR STUD SPACING ON ALL BEARING WALL ASSEMBLIES. REFER TO STRUCTURAL DRAWINGS FOR SHEAR AND BEARING WALLS CONSTRUCTION REQUIREMENTS.
- REFER TO STRUCTURAL DRAWINGS FOR CONCRETE AND MASONRY WALL REINFORCING.
- REFER TO GENERAL NOTES ON STRUCTURAL DRAWINGS FOR PANEL FASTENING AND BLOCKING REQUIREMENTS FOR CORRIDOR AND UNIT SEPARATION WALLS.
- ALL ASSEMBLY RATINGS LISTED ARE ACHIEVABLE RATINGS. REFER TO CODE SUMMARY AND CODE PLANS FOR RATED WALL LOCATIONS.
- WOOD IN CONTACT WITH CONCRETE TO BE TREATED WOOD (PPT).
- USE MOISTURE RESISTANT GYP. BD. AT BATHROOMS AND TOILET ROOMS.
- PROVIDE ADDITIONAL LAYER OF MOISTURE RESISTANT GYP. BD. TO CONCEAL TUB FLANGE WHERE OCCURS.
- EXTERIOR WALL ASSEMBLIES SHALL BE AIRTIGHT, HAIRLINE CRACKS AND SMALL HOLES ARE NOT ALLOWED.
- PROVIDE CONTINUOUS BLOCKING IN UNIT BATHROOMS FOR GRAB BARS AND ACCESSIBLE FIXTURE MOUNTINGS. SEE SHEET G140.
- RECESSED WALL FIXTURES SUCH AS OUTLETS AND OTHER ITEMS WHICH PERFORATE THE GYPSUM BOARD SURFACES SHALL NOT BE LOCATED BACK TO BACK IN THE SAME WALL CAVITY.
- ANY OPENING CUT IN GYPSUM BOARD FOR INSTALLATION OF PENETRATING FIXTURES SHALL BE CUT CAREFULLY TO SIZE AND CAULKED AT UNIT SEPARATION WALLS. INSULATE BACKSIDE OF RECEPTACLES AND PROVIDE INTUMESCENT WRAP (PUTTY PACKS) AROUND RECEPTACLES AND OTHER ELECTRICAL BOXES. COORDINATE WITH ELECTRICAL.
- PROVIDE SEALED JOINTS ON EXTERIOR MOISTURE CONTROL MEMBRANE AT OUTSIDE OF SHEATHING BEFORE FINISH MATERIAL IS APPLIED.
- COORDINATE USE OF MATERIAL WHEN GYP. BD. IS EXPOSED TO WEATHER DURING CONSTRUCTION (EXAMPLE: ELEVATOR AND STAIR SHAFTS).
- INSULATE GAPS AT FRAMING BETWEEN EXTERIOR WINDOWS, DOORS, AND OTHER RELATED ITEMS. SEE MANUFACTURER'S RECOMMENDATION FOR TYPE OF INSULATION (FOAM OR BATT) TO BE USED.
- SEE 2017 DCBC SECTION 703 AND TABLE 602 FIRE RATING REQUIREMENTS FOR EXTERIOR WALL EXPOSURE.
- REFER TO A600 SERIES (CONSTRUCTION ASSEMBLIES) FOR WALL TYPES.
- REFER TO A200 SERIES (UNIT PLANS) FOR UNIT WALL TYPES.
- TYPICAL WALL TYPES ARE AS FOLLOWS:
 - FOR UNIT SEPARATION WALLS: WALL TYPE = 'X' SERIES (UNLESS NOTED OTHERWISE)
 - FOR CORRIDOR WALLS: WALL TYPE = 'X' SERIES (UNLESS NOTED OTHERWISE)
 - FOR ELEVATOR / STAIR WALLS: WALL TYPE = 'X' SERIES (UNLESS NOTED OTHERWISE)
 - FOR NON-BEARING INTERIOR UNIT WALLS: WALL TYPE = 'X' SERIES
 - FOR INTERIOR WALLS AT PARKING LEVEL: WALL TYPE = 'X' SERIES

CONSULTANTS

PROJECT TITLE

The Standard at
Wesley -
Washington, DC

ISSUE #	DATE	DESCRIPTION
	08/22/2023	100% SD SET
	09/26/2023	50% DD SET

CERTIFICATION

NOT FOR
CONSTRUCTION

DRAWN BY	Author
CHECKED BY	Checker
COMMISSION NUMBER	1870-20

SHEET TITLE

LEVEL 1 -
OVERALL FLOOR
PLAN

SHEET NUMBER

A101



ARCHITECTURAL KEYNOTES

FLOOR PLAN GENERAL NOTES

- IF A WALL, FLOOR, OR ROOF ASSEMBLY SUBSTITUTION IS REQUESTED, PROVIDE A TESTED ASSEMBLY MATCHING OR EXCEEDING REQUIREMENTS OF THOSE SHOWN IN THE DOCUMENTS.
- PROVIDE BLOCKING AND BACKER SUPPORT FOR WALL-MOUNTED AND/OR CEILING-MOUNTED HARDWARE, EQUIPMENT, AND ACCESSORIES.

DIMENSIONING / LAYOUT NOTES

- DIMENSIONS ARE TAKEN TO: (UNLESS NOTED OTHERWISE):
 - THE CENTER LINE OF STUD AT INTERIOR WALLS
 - THE FACE OF GYPSUM BOARD AT CORRIDOR WALLS (GRID AT CORRIDOR SIDE)
 - THE CENTERLINE OF UNIT SEPARATION WALLS (GRID AT CENTERLINE)
 - THE OUTSIDE FACE OF SHEATHING AT EXTERIOR WALLS WITH SIDING OR MASONRY VENEER, FACE OF MASONRY AT STRUCTURAL MASONRY EXTERIOR WALLS
 - THE FACE OF INTERIOR CMU WALLS
- VERIFY ALL GRADES WITH CIVIL DRAWINGS.
- REFER TO A900 SERIES FOR OPENING INFORMATION.

GENERAL CONSTRUCTION NOTES

- BLOCKING AND FASTENING REQUIREMENTS OF WALL ASSEMBLY LISTED NUMBER MAY VARY FROM STRUCTURAL DRAWINGS AND SPECIFICATIONS. WALLS TO BE CONSTRUCTED TO MEET THE MORE RESTRICTIVE REQUIREMENT. SEE STRUCTURAL DRAWINGS FOR ADDITIONAL INFORMATION.
- CONTRACTOR TO OBTAIN TESTED ASSEMBLIES NOTED FOR REQUIRED GYPSUM BOARD ORIENTATION, NAILING/SCREW, TAPING, MUD, BLOCKING, ETC. TO PROVIDE TEST NUMBERS WITH FIRE RATINGS: STC 8 IIC (STC 8 I IC - 50 MIN AT UNITS) FOR PROPRIETARY SUBSTITUTION OF WALL ASSEMBLIES.
- FLOOR-CEILING ASSEMBLIES, ROOF-CEILING ASSEMBLIES, AND OTHERS: ALL SHAFT WALLS TO CONTINUOUSLY EXTEND TO UNDERSIDE OF DECK. ALL STAIR & ELEVATOR ENCLOSURES TO CONTINUOUSLY EXTEND TO UNDERSIDE OF DECK. DO NOT PENETRATE STAIR & ELEVATOR FIRE RATING MEMBRANE PROTECTION UNLESS SERVING STAIR & ELEVATOR ENCLOSURE. FINISH FLOOR ELEVATION CHANGE AT DOORS & FLOORING MATERIAL NOT TO EXCEED 1/2" U.N.O.
- ALL DOOR OPENINGS IN COMMON AREAS TO BE 32" CLR. MIN. WITH DOOR IN OPEN POSITION.
- COMMON AREA DOOR CLEARANCES & APPROACHES PER 2017 DCBC AND ANSI A117.1.
- DO NOT SCALE DRAWINGS.
- SEE CODE SUMMARY ON SHEET G120 FOR CONSTRUCTION TYPE AND ALLOWABLE BUILDING MATERIAL.
- PROVIDE BLOCKING/BACKER SUPPORT FOR WALL AND CEILING MOUNTED HARDWARE, EQUIPMENT, AND ACCESSORIES.
- REMOVE DEBRIS AND CLEAN ALL AREAS RECEIVING SEALANTS FOR MAXIMUM ADHESION / PERFORMANCE.
- SEE 2017 DCBC SECTION 603 FOR ALLOWABLE COMBUSTIBLE MATERIALS IN TYPE I CONSTRUCTION.

GENERAL WALL TYPE NOTES

- REFER TO THE STRUCTURAL DRAWING FOR LOCATIONS AND SPECIAL REQUIREMENTS FOR STUD SPACING ON ALL BEARING WALL ASSEMBLIES.
- REFER TO STRUCTURAL DRAWINGS FOR SHEAR AND BEARING WALLS CONSTRUCTION REQUIREMENTS.
- REFER TO STRUCTURAL DRAWINGS FOR CONCRETE AND MASONRY WALL REINFORCING.
- REFER TO GENERAL NOTES ON STRUCTURAL DRAWINGS FOR PANEL FASTENING AND BLOCKING REQUIREMENTS FOR CORRIDOR AND UNIT SEPARATION WALLS.
- ALL ASSEMBLY RATINGS LISTED ARE ACHIEVABLE RATINGS. REFER TO CODE SUMMARY AND CODE PLANS FOR RATED WALL LOCATIONS.
- WOOD IN CONTACT WITH CONCRETE TO BE TREATED WOOD (PPT).
- USE MOISTURE RESISTANT GYP. BD. AT BATHROOMS AND TOILET ROOMS.
- PROVIDE ADDITIONAL LAYER OF MOISTURE RESISTANT GYP. BD. TO CONCEAL TUB FLANGE WHERE OCCURS.
- EXTERIOR WALL ASSEMBLIES SHALL BE AIRTIGHT, HAIRLINE CRACKS AND SMALL HOLES ARE NOT ALLOWED.
- PROVIDE CONTINUOUS BLOCKING IN UNIT BATHROOMS FOR GRAB BARS AND ACCESSIBLE FIXTURE MOUNTINGS. SEE SHEET G140.
- RECESSED WALL FIXTURES SUCH AS OUTLETS AND OTHER ITEMS WHICH PERFORATE THE GYPSUM BOARD SURFACES SHALL NOT BE LOCATED BACK TO BACK IN THE SAME WALL CAVITY.
- ANY OPENING CUT IN GYPSUM BOARD FOR INSTALLATION OF PENETRATING FIXTURES SHALL BE CUT CAREFULLY TO SIZE AND CAULKED AT UNIT SEPARATION WALLS. INSULATE BACKSIDE OF RECEPTACLES AND PROVIDE INTUMESCENT WRAP (PUTTY PACKS) AROUND RECEPTACLES AND OTHER ELECTRICAL BOXES. COORDINATE WITH ELECTRICAL.
- PROVIDE SEALED JOINTS ON EXTERIOR MOISTURE CONTROL MEMBRANE AT OUTSIDE OF SHEATHING BEFORE FINISH MATERIAL IS APPLIED. COORDINATE USE OF MATERIAL WHEN GYP. BD. IS EXPOSED TO WEATHER DURING CONSTRUCTION (EXAMPLE: ELEVATOR AND STAIR SHAFTS).
- INSULATE GAPS AT FRAMING BETWEEN EXTERIOR WINDOWS, DOORS, AND OTHER RELATED ITEMS. SEE MANUFACTURER'S RECOMMENDATION FOR TYPE OF INSULATION (FOAM OR BATT) TO BE USED.
- SEE 2017 DCBC SECTION 703 AND TABLE 602 FIRE RATING REQUIREMENTS FOR EXTERIOR WALL EXPOSURE.
- REFER TO A600 SERIES (CONSTRUCTION ASSEMBLIES) FOR WALL TYPES.
- REFER TO A200 SERIES (UNIT PLANS) FOR UNIT WALL TYPES.
- TYPICAL WALL TYPES ARE AS FOLLOWS:
 - FOR UNIT SEPARATION WALLS: WALL TYPE = 'X' SERIES (UNLESS NOTED OTHERWISE)
 - FOR CORRIDOR WALLS: WALL TYPE = 'X' SERIES (UNLESS NOTED OTHERWISE)
 - FOR ELEVATOR / STAIR WALLS: WALL TYPE = 'X' SERIES (UNLESS NOTED OTHERWISE)
 - FOR NON-BEARING INTERIOR UNIT WALLS: WALL TYPE = 'X' SERIES
 - FOR INTERIOR WALLS AT PARKING LEVEL: WALL TYPE = 'X' SERIES

CONSULTANTS

PROJECT TITLE

The Standard at
Wesley -
Washington, DC

ISSUE #	DATE	DESCRIPTION
	08/22/2023	100% SD SET
	09/26/2023	50% DD SET

CERTIFICATION

DRAWN BY	Author
CHECKED BY	Checker
COMMISSION NUMBER	1870-20

SHEET TITLE

LEVEL 2 -
OVERALL FLOOR
PLAN

SHEET NUMBER

A102