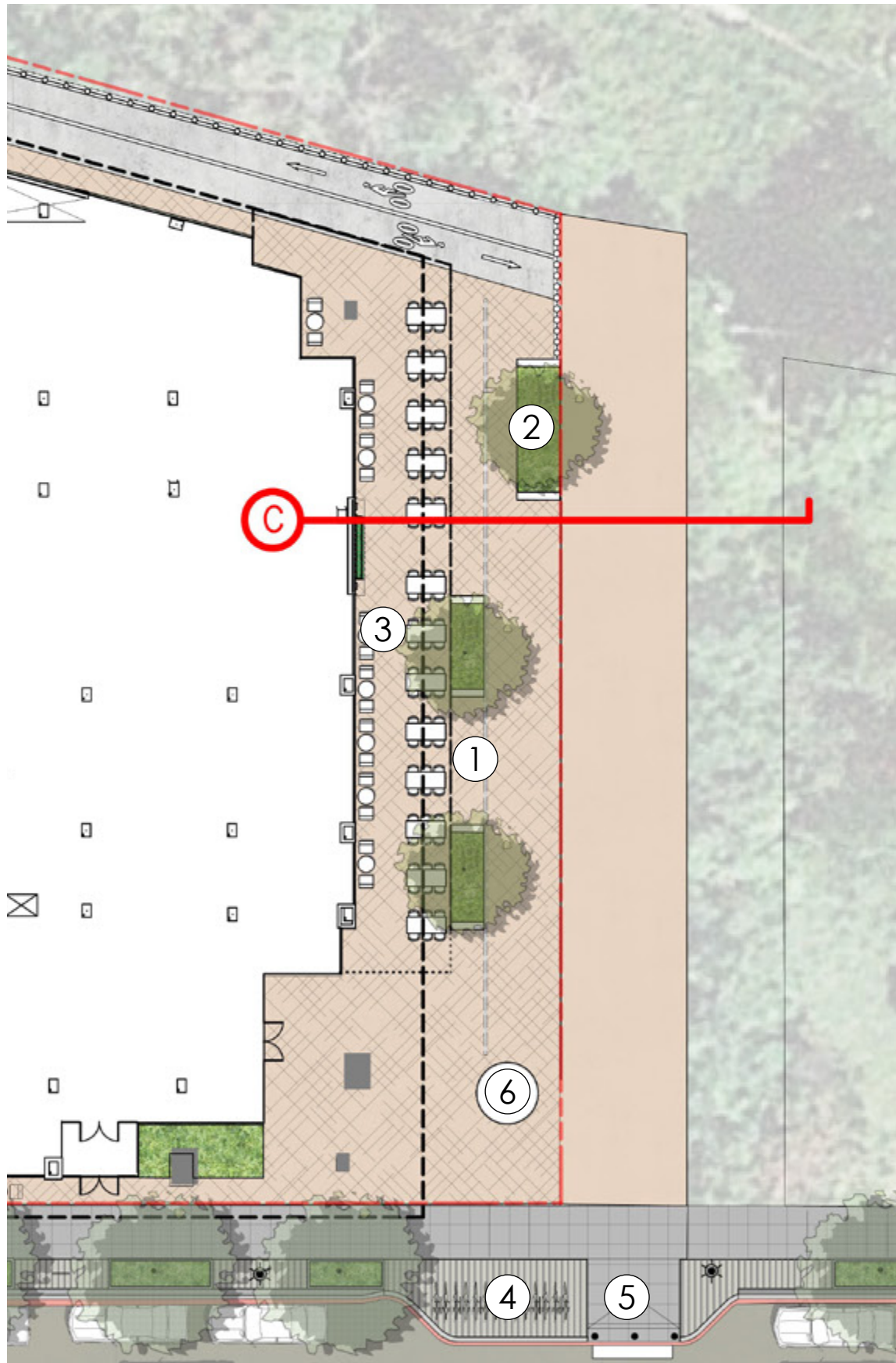
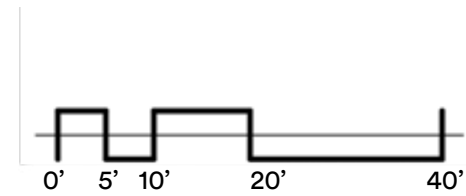
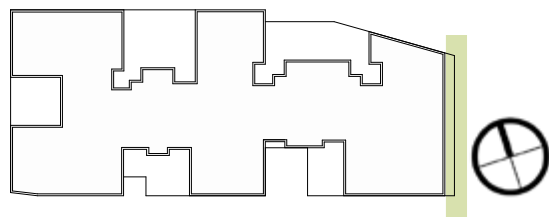
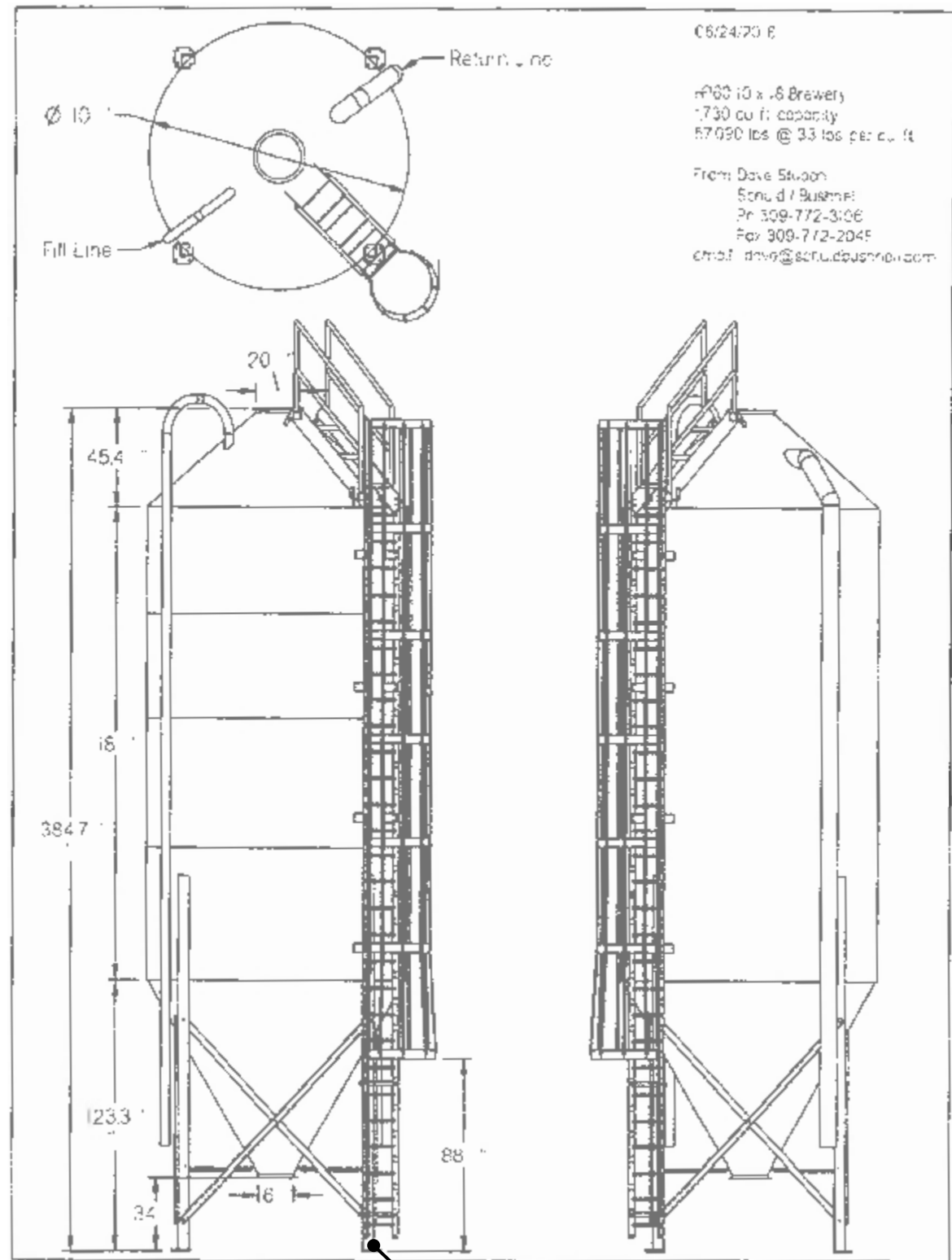


# SE Corner: Grain Silo



- ① PLAZA PAVING
- ② RAISED TREE PLANTER W/ SEATING
- ③ PATIO SEATING
- ④ BIKE PARKING
- ⑤ PEDESTRIAN CROSSING
- ⑥ GRAIN SILO



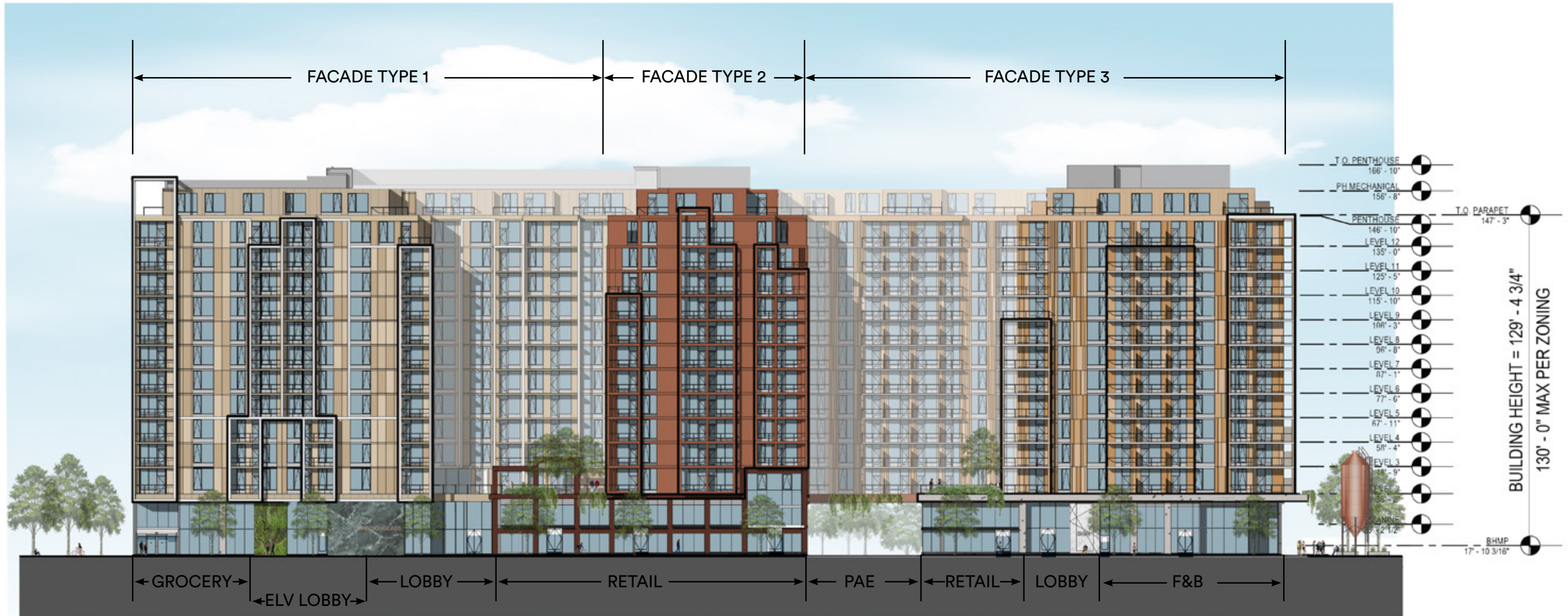


Silo support legs will be extended to allow pedestrians to walk below the equipment

Grain Silo Equipment Information

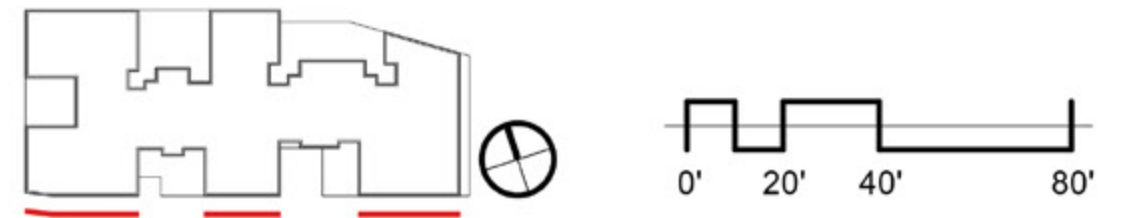


Brewery Silo Example Imagery



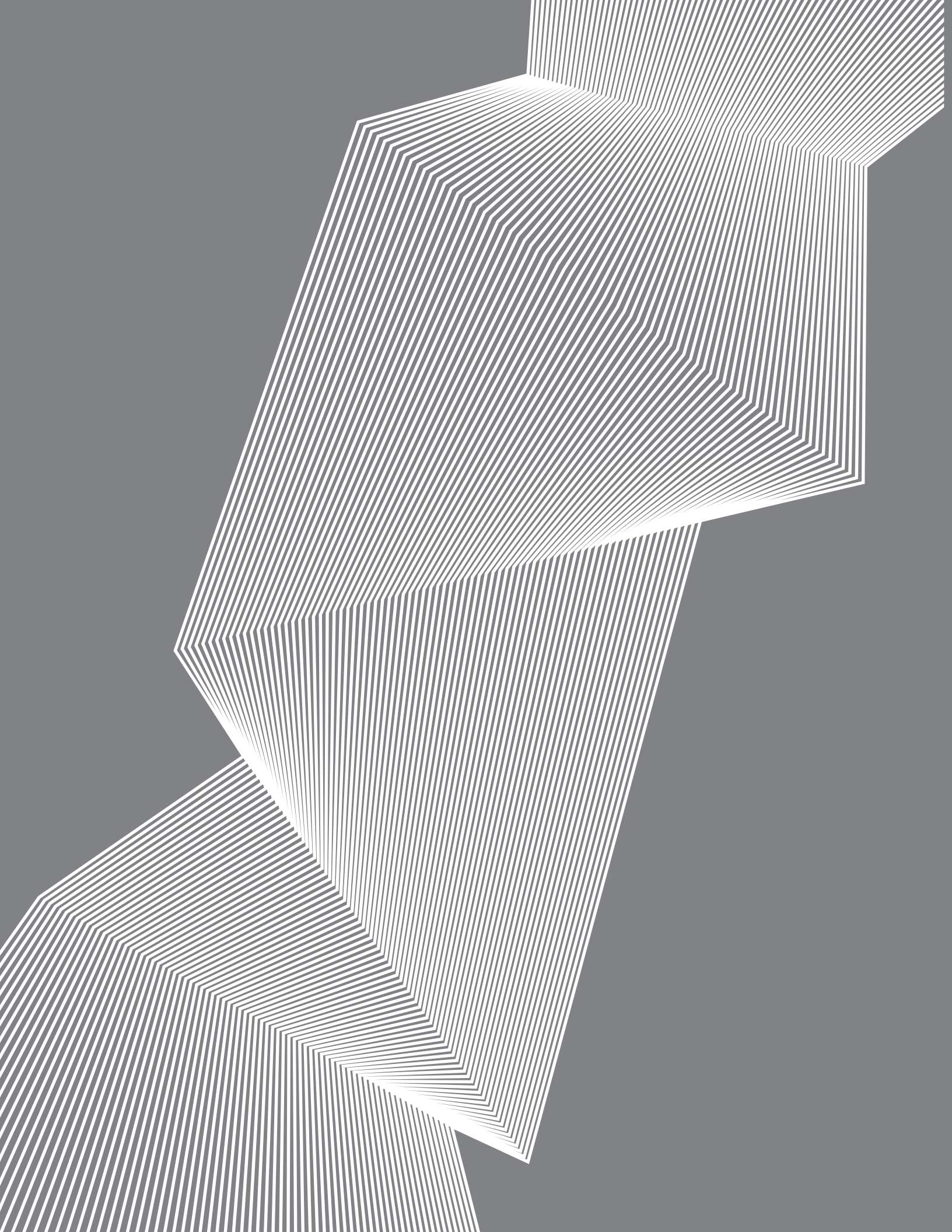
\*Ground floor retail elevations are illustrative and intended to describe the character and scale for the base of the building. The actual retail elevations will be developed by individual retail tenants, approved by the building owner, and may change over time to accommodate leasing cycles.

\* Exhaust vents to be integrated into final façade designs NO through-wall HVAC units will be on building elevations.









# Durability of Lighter Façade Materials



1. Solid Wall Cladding  
**Cement Panel 1 - Buff Color**
2. Accent Grid  
**Metal Panel Accent 1 - Pearl Color**
3. Vision Glass  
**Color 1 - Blue Color**
4. Window Frame  
**Color 1 - Silver Color**
5. Balcony Soffit  
**Skim Coat 1 - Sand Color**





## Porous Materials



Department of Labor Building (1975) - Precast Concrete



Treasury Department Building (1842) - Sandstone

## Non-Porous Materials



CityCenterDC (2014) - Terracotta & Cement Panel



Waterfront Station (2010) - Metal Panel & Cement Panel



# Grocery Store Parking / Access

REDBRICK LMD | ZGF

**COLOR LEGEND**

- BUILDING SUPPORT
- CIRCULATION
- RESIDENTIAL - AMENITY
- RETAIL PARKING

**REQUIRED PARKING SPACES PER ZONING**

RETAIL (1.3 per 1,000 sf) = 65 spaces\*  
 RESIDENTIAL (1 per 3 units) = 250 spaces

**TOTAL PARKING SPACES**

(109 RETAIL + 260 RESIDENTIAL) = 369 spaces

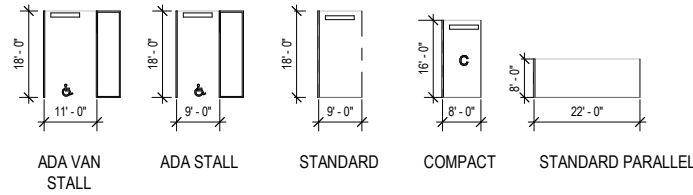
**REQUIRED LONG TERM BIKE PARKING PER ZONING**

RETAIL (1 PER 10,000 SF) = 5  
 RESIDENTIAL (1 PER 3 DUs, 50% AFTER FIRST 50 SPACES) = 152

**REQUIRED SHORT TERM BIKE PARKING PER ZONING**

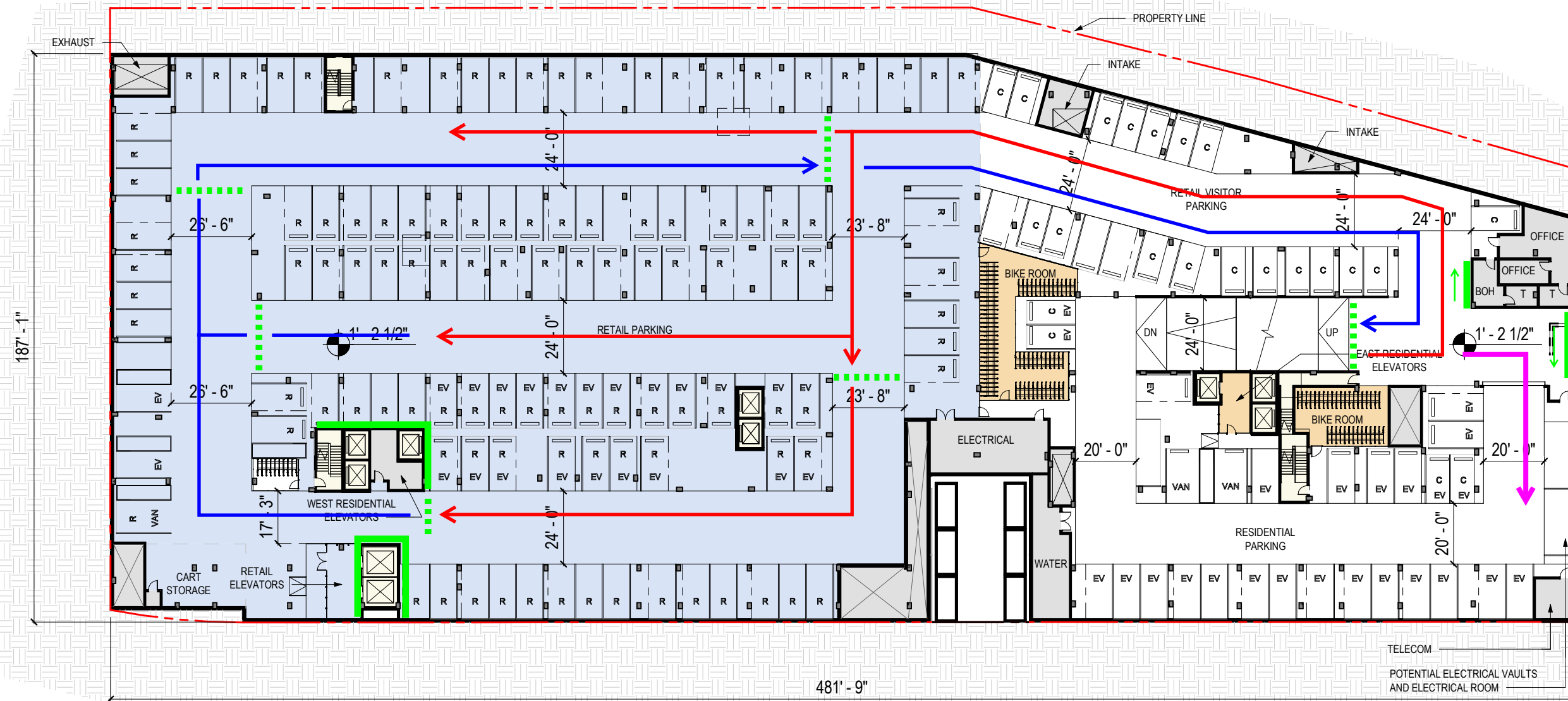
RETAIL (1 PER 3,500 SF) = 15  
 RESIDENTIAL (1 PER 20 DUs) = 38

**PARKING STALL TYPES**

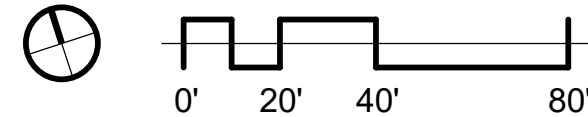


BIKE PARKING	
LEVEL	COUNT
RESIDENTIAL	
LEVEL B1	208
LEVEL 1	40
RETAIL	
LEVEL B1	20
RETAIL	20
<b>GRAND TOTAL</b>	<b>268</b>

PARKING TABULATIONS	
TYPE	COUNT
RETAIL	
LEVEL B1	
ADA	4
ADA VAN	1
PARALLEL	1
STANDARD	100
	106
RESIDENTIAL	
LEVEL B2	
ADA	5
COMPACT	59
PARALLEL	5
STANDARD	127
	196
LEVEL B1	
ADA VAN	2
COMPACT	26
PARALLEL	3
STANDARD	33
	64
FUTURE TENANT	
LEVEL B1	
ADA	1
STANDARD	2
	3
	3
<b>GRAND TOTAL</b>	<b>369</b>



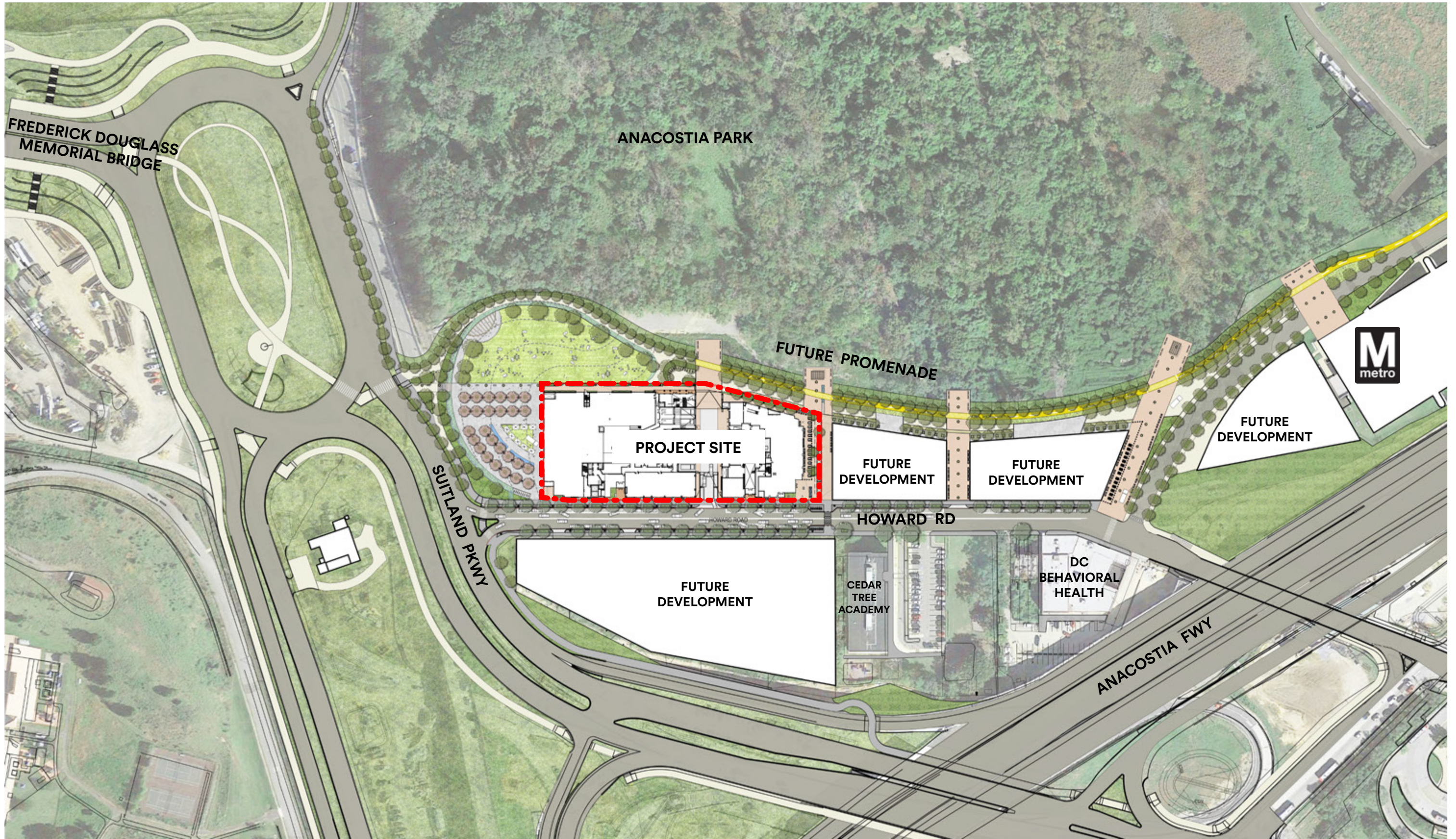
- RETAIL INGRESS PATH
- RETAIL EGRESS PATH
- RESIDENTIAL PATH
- GRAPHIC WAYFINDING ELEMENTS
- ⋯ OVERHEAD SIGNAGE

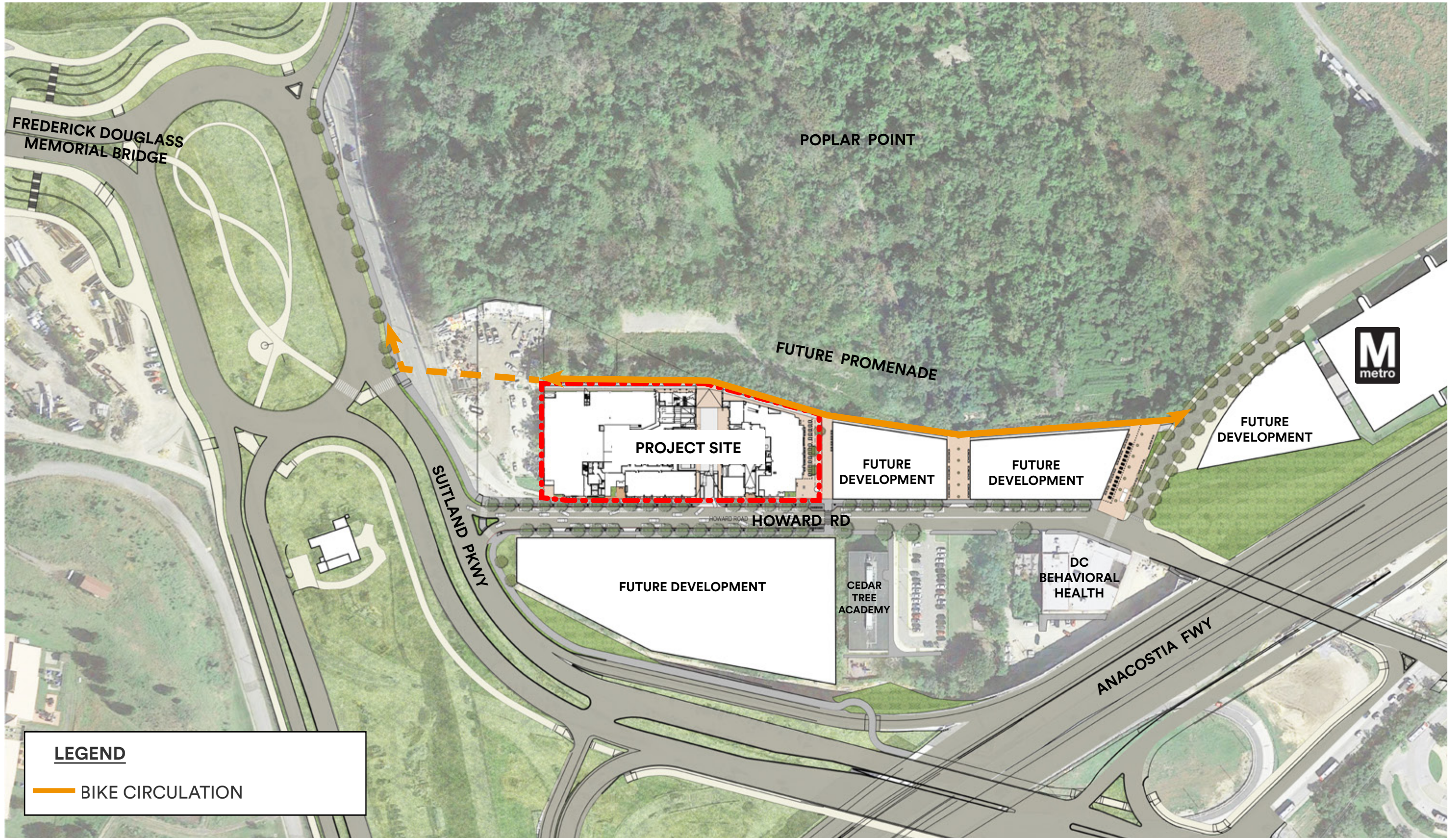


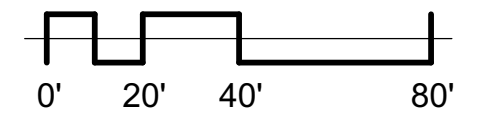
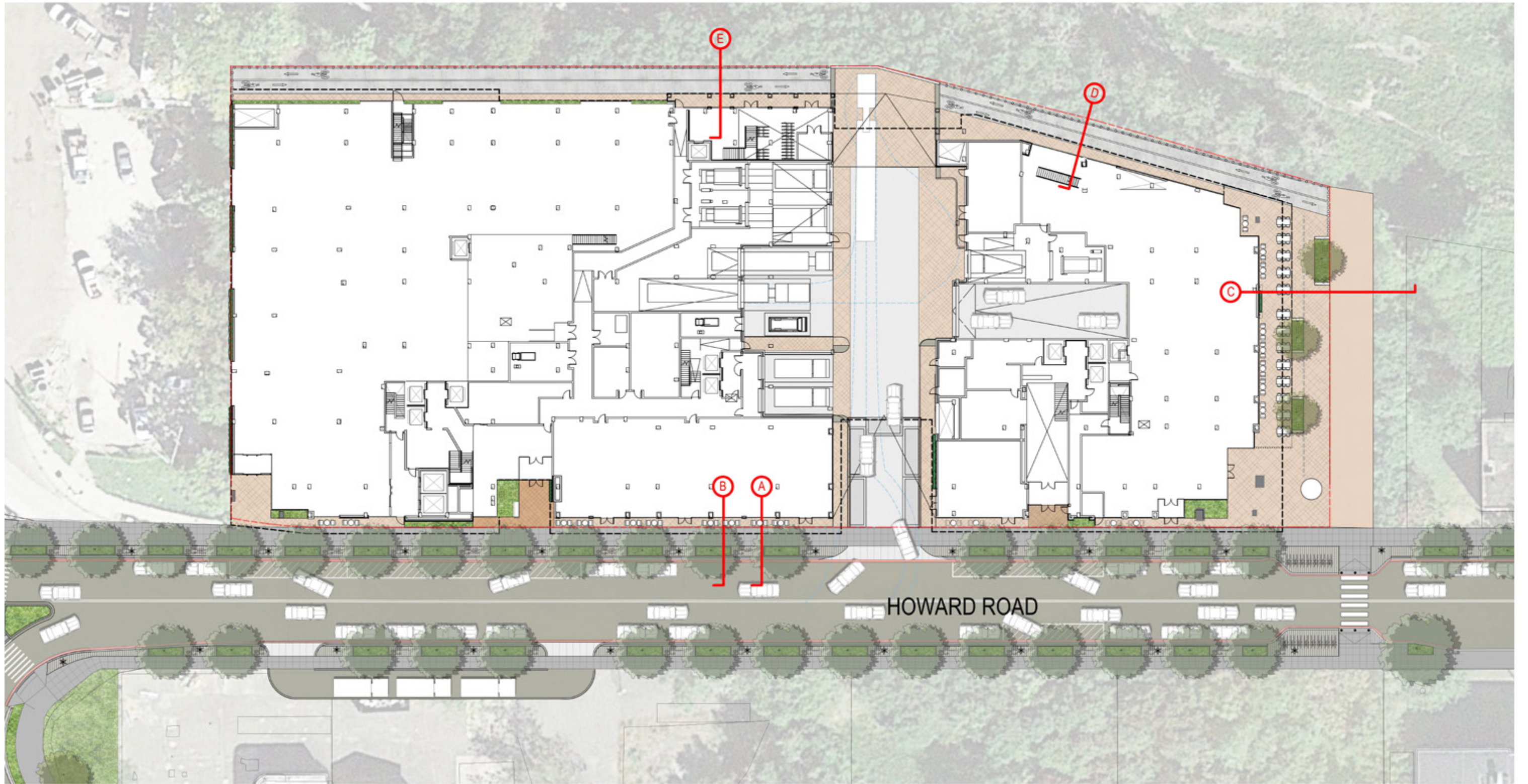
An abstract graphic on the left side of the page, composed of numerous thin, white, parallel lines. These lines are arranged to form a complex, multi-faceted geometric shape that resembles a stylized letter 'R' or a similar angular form. The lines are closely spaced, creating a sense of depth and movement. The background is a solid, dark gray color.

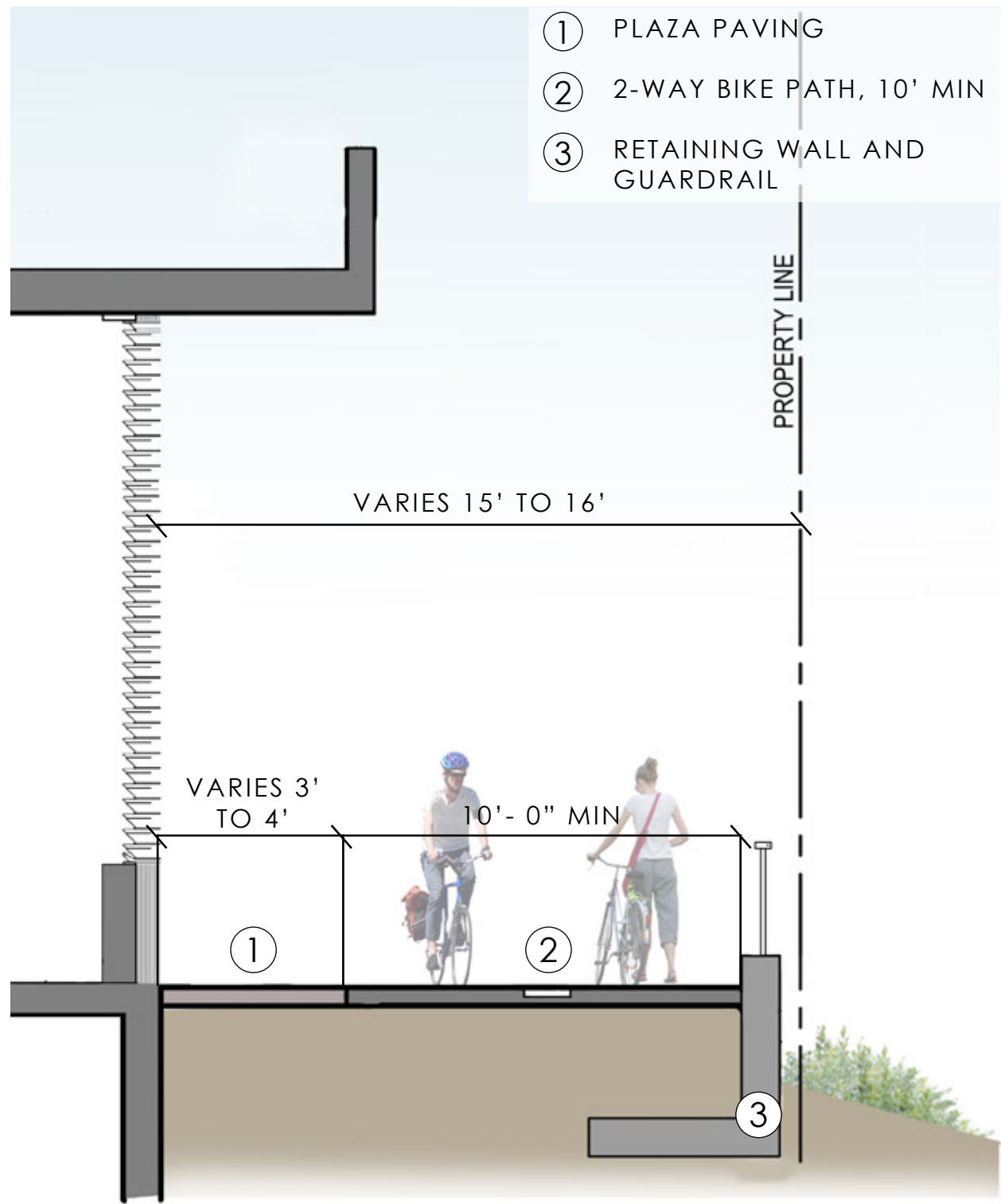
# Promenade Rear-Yard Design

REDBRICK LMD | ZGF

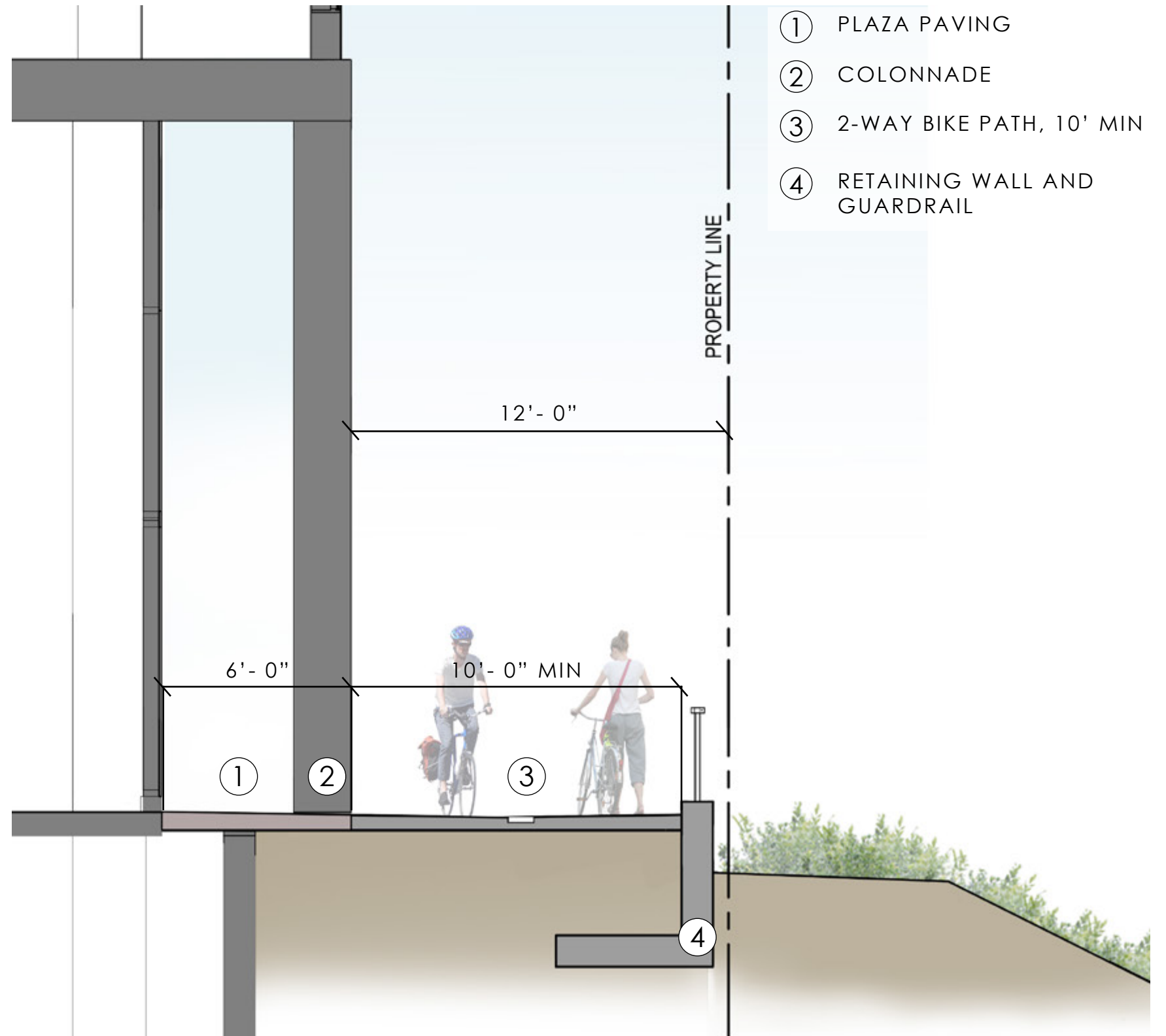








**Section D**



**Section E**

