

Design Revisions Southwest Corner

Zoning Commission (November 12)



Design Revisions Southwest Corner

Revised Version



Design Revisions Southwest Corner

Revised Version

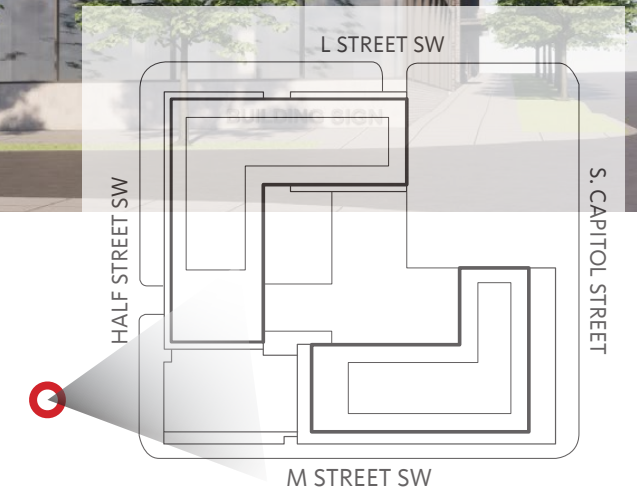


Design Revisions West / Southwest Corner

Zoning Commission (November 12)



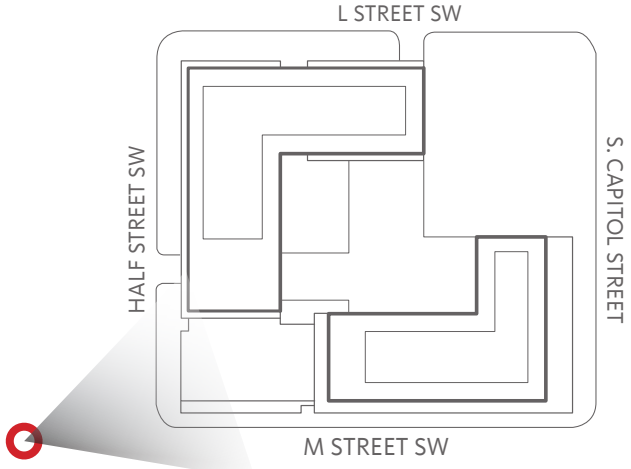
Revised Version



Design Revisions View from M Street SW Looking East

Zoning Commision (November 12)

Revised Version

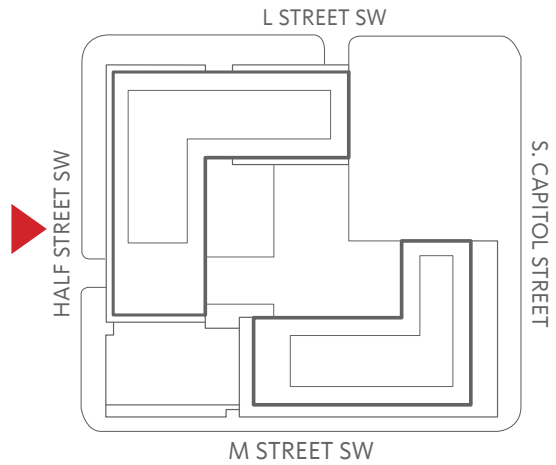


Design Revisions West Elevation

Zoning Commision (November 12)



Revised Version

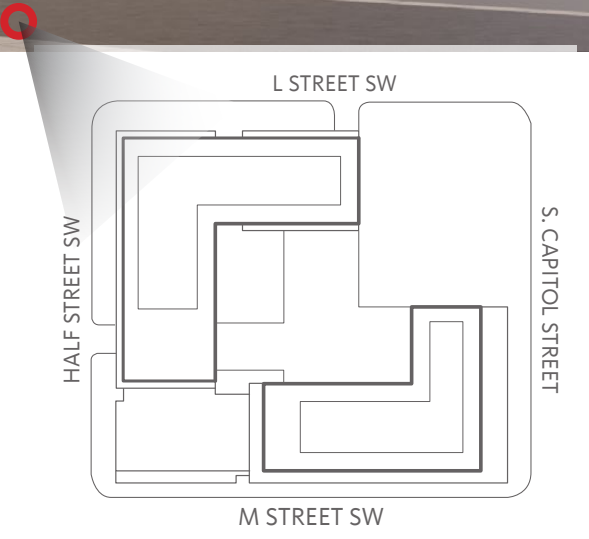


Design Revisions Northwest Corner

Zoning Commission (November 12)



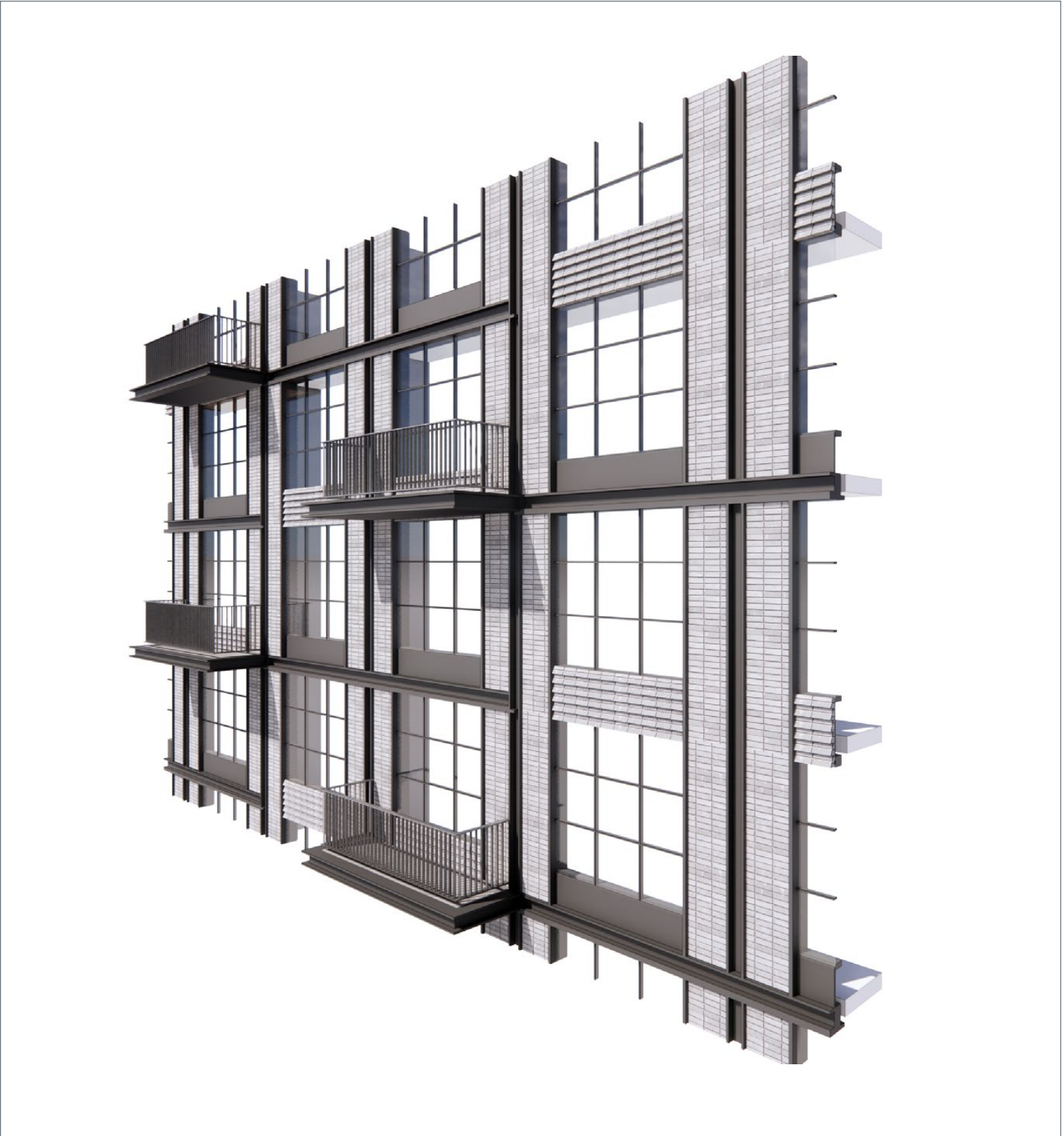
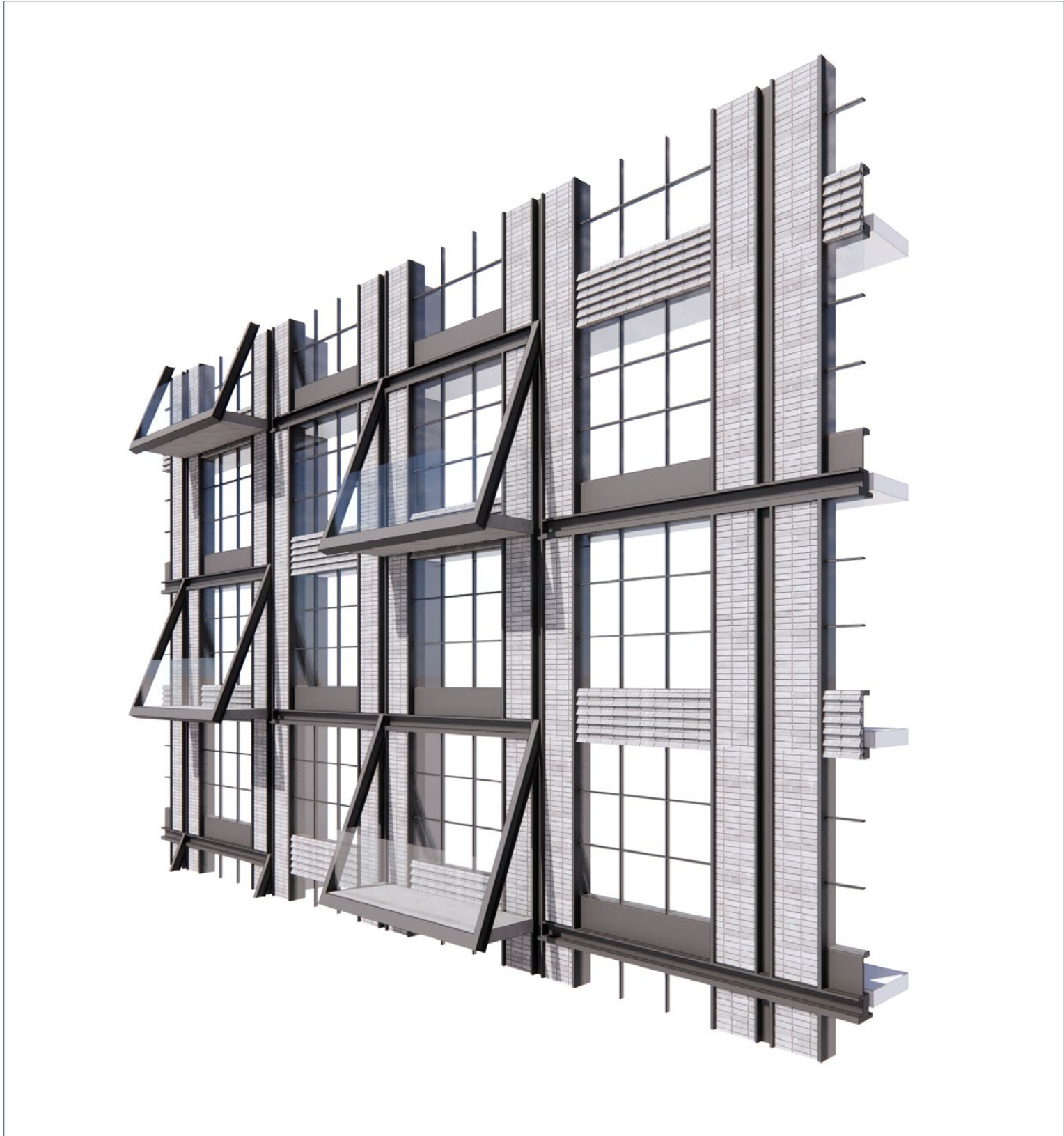
Revised Version



Design Revisions Balcony Revision

Zoning Commision (November 12)

Revised Version

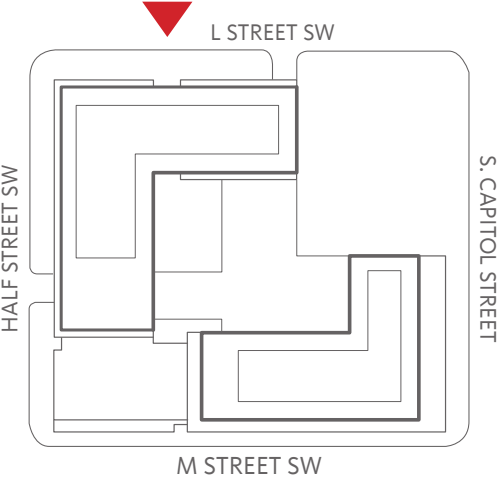


Design Revisions North Elevation

Zoning Commission (November 12)



Revised Version



Design Revisions Light Brick References



2311 Connecticut Avenue NW



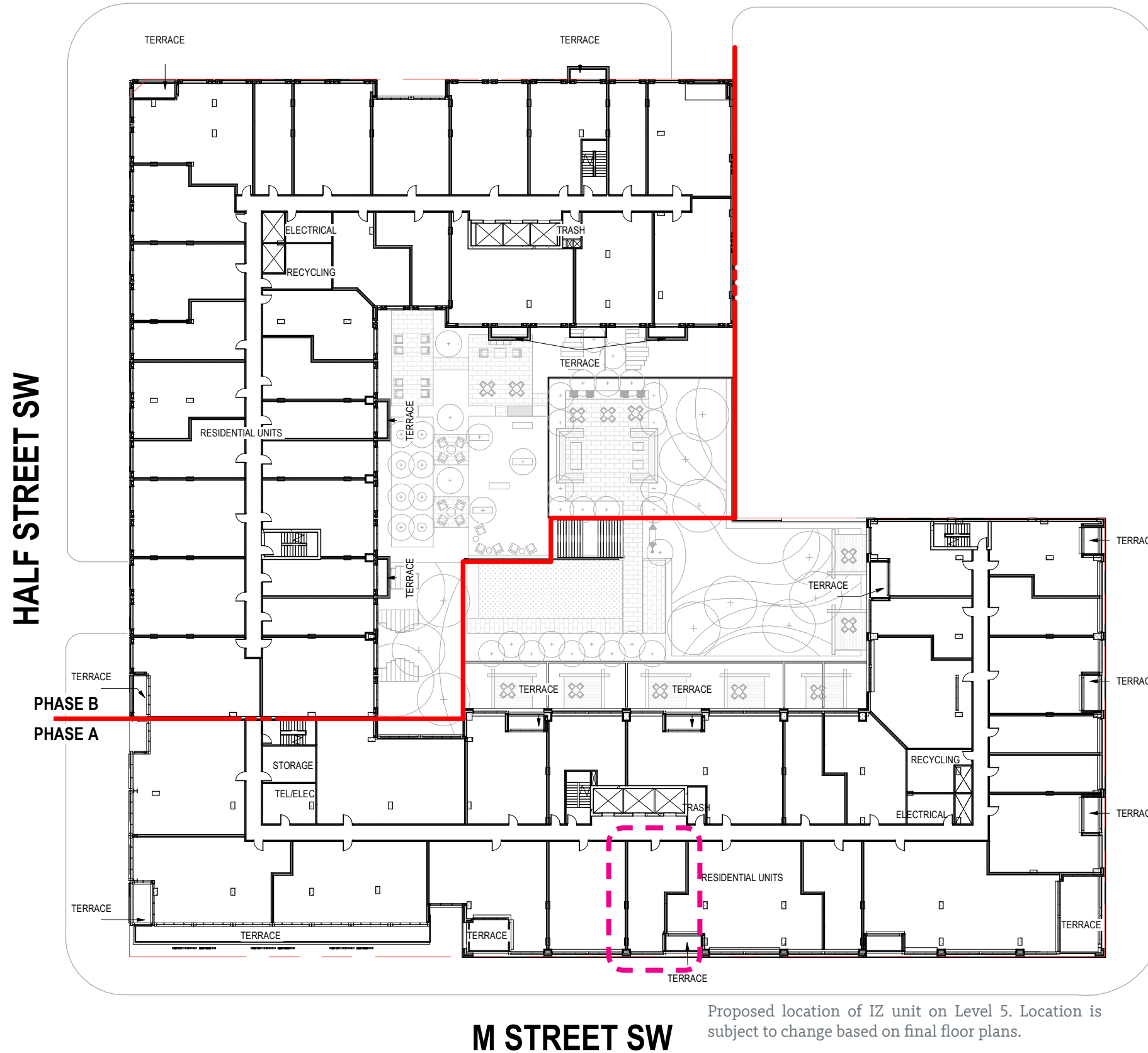
3701 Connecticut Avenue NW



880 New Jersey Avenue SE



L STREET SW



Proposed location of IZ unit on Level 5. Location is subject to change based on final floor plans.

NOTES:

APPLICANT REQUESTS FLEXIBILITY TO VARY THE LOCATION AND DESIGN OF ALL INTERIOR COMPONENTS, INCLUDING PARTITIONS, STRUCTURAL SLABS, DOORS, RETAIL ENTRANCES, HALLWAYS, COLUMNS, STAIRWAYS, AND MECHANICAL ROOMS, PROVIDED THAT THE VARIATIONS DON'T CHANGE THE EXTERIOR CONFIGURATION OF THE BUILDING.

PHASE A & B OF THE PROJECT MAY BE BUILT SIMULTANEOUSLY OR IN PHASES.

THE DESIGN AND LAYOUT OF THE POOL, TRELIS, COURTYARDS, AND OUTDOOR AMENITY AREAS ARE PRELIMINARY AND ARE SHOWN FOR ILLUSTRATIVE PURPOSES ONLY. FINAL LAYOUTS MAY VARY.

